

Lake Macbride

Johnson County

Contour Interval is six feet

Maximum Depth - 45 ft
 Mean Depth - 7.7 ft
 Area - 940 acres



Fisheries Bureau

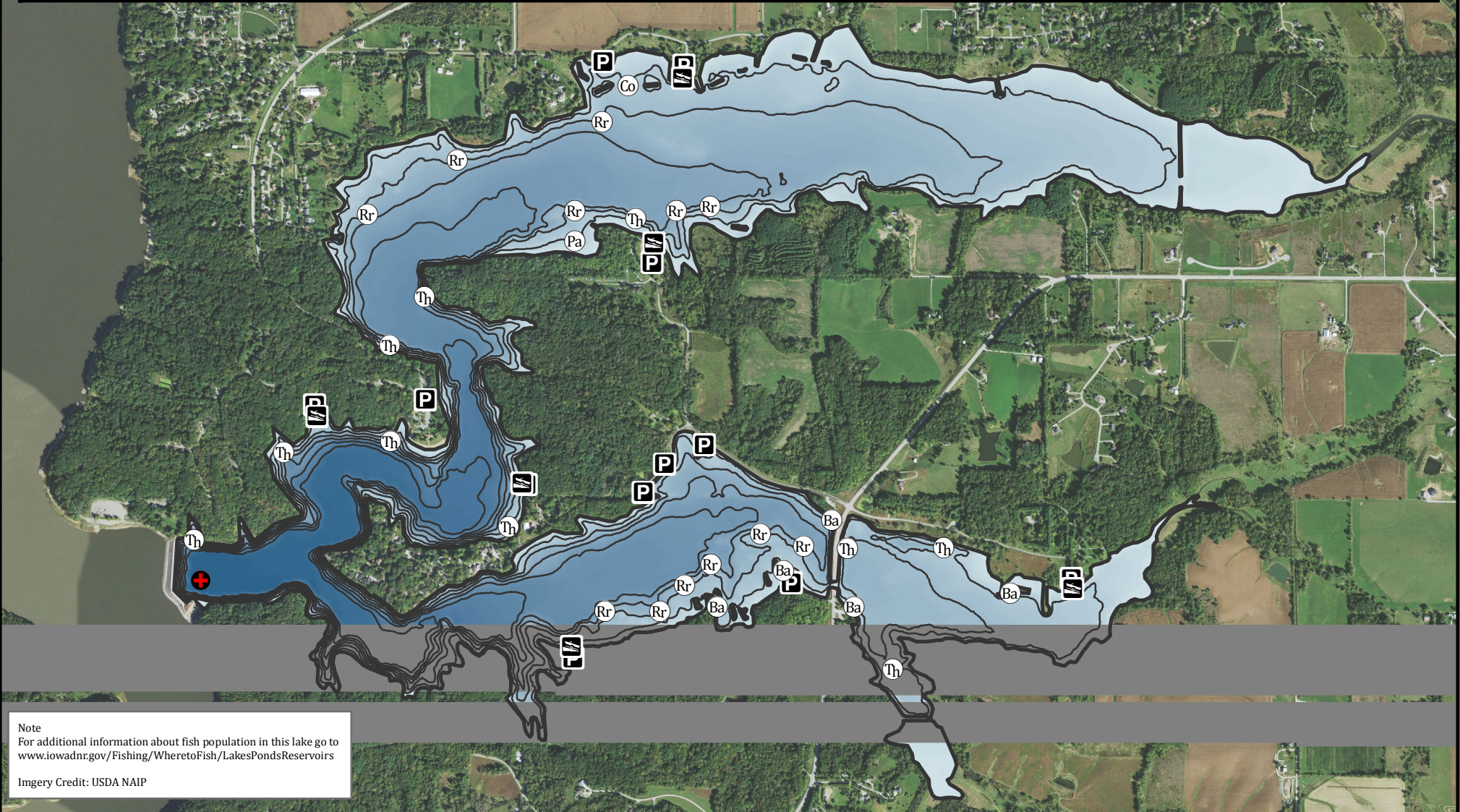
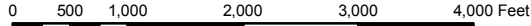


- Maximum Depth
- Parking
- Boat Ramp
- Public Area

- ### Fishing Structure
- Barrels
 - Rock Reefs
 - Concrete
 - Trees Hardwood
 - Pallets

GPS Coordinates for the fishing structures below can be downloaded from a GPX file located at www.iowadnr.gov/Fishing/Fishing-Maps

Depth adjusted to crest elevation
 Horizontal Datum NAD 83
 Coordinates are UTM Zone 15
 Map Produced ; February 2017



Note
 For additional information about fish population in this lake go to www.iowadnr.gov/Fishing/Wheretofish/LakesPondsReservoirs

Imagery Credit: USDA NAIP