

Mormon Trail Lake

Adair County

Contour Interval is three feet

Maximum Depth - 32 ft
Mean Depth - 12 ft
Area - 33 acres



Fisheries
Bureau

Fishing Structure

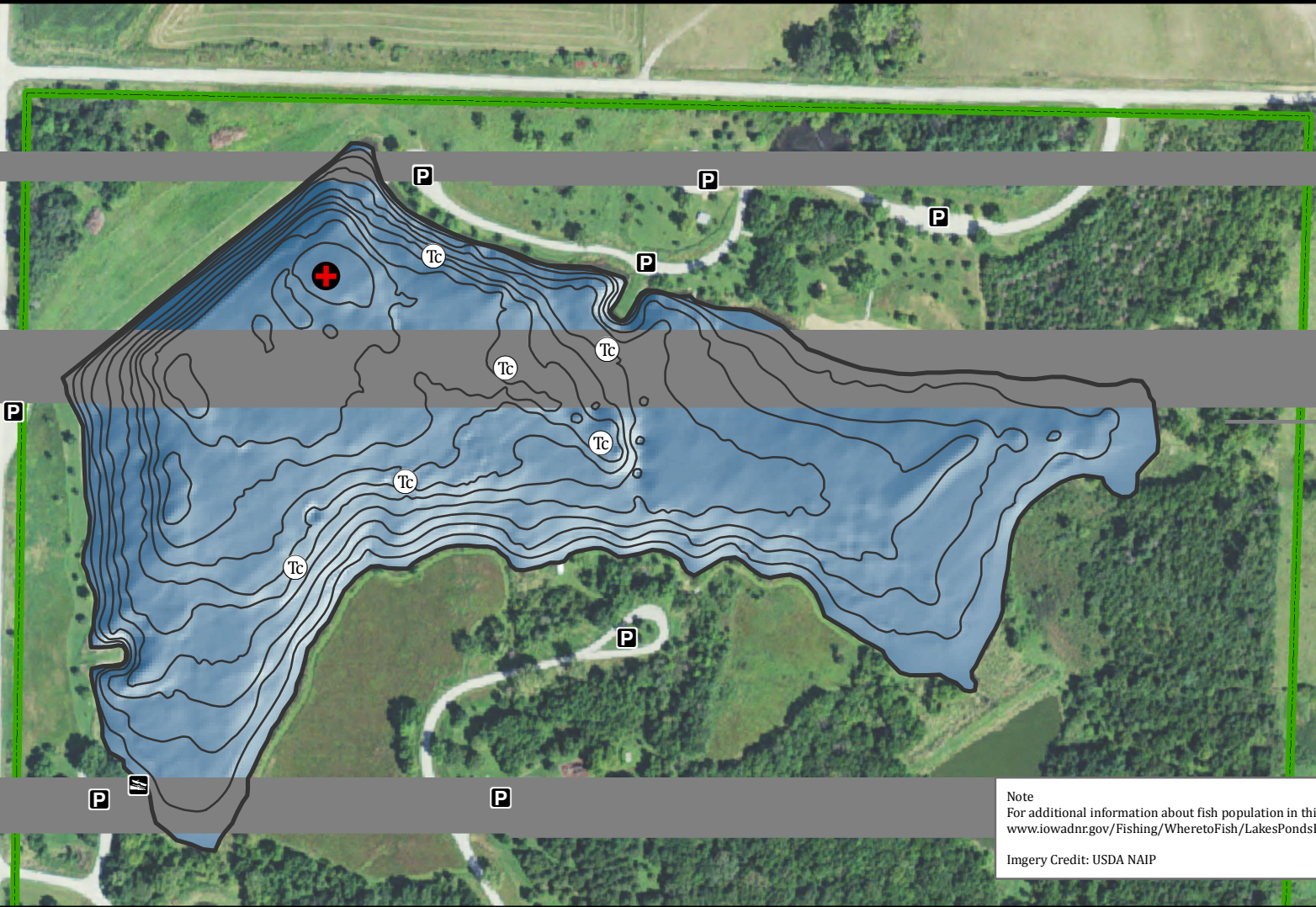
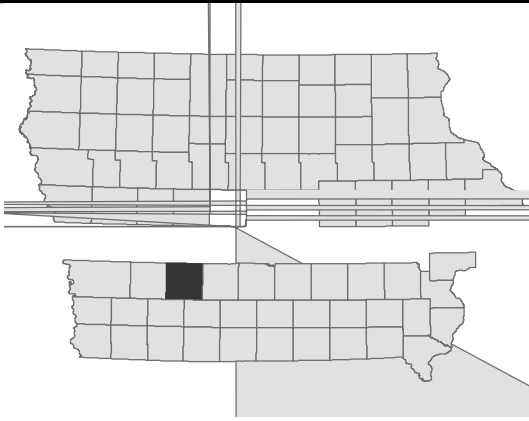
(Tc) Trees Cedar

GPS Coordinates for the fishing structures below can be downloaded from a GPX file located at www.iowadnr.gov/Fishing/Fishing-Maps

- Maximum Depth
- Fish Cleaning Station
- Parking
- Boat Ramp
- Public Area

Depth adjusted to crest elevation
Horizontal Datum NAD 83
Coordinates are UTM Zone 15
Map Produced ; February 2017

0 105 210 420 630 840 Feet



Note
For additional information about fish population in this lake go to www.iowadnr.gov/Fishing/Wheretofish/LakesPondsReservoirs
Imgerly Credit: USDA NAIP