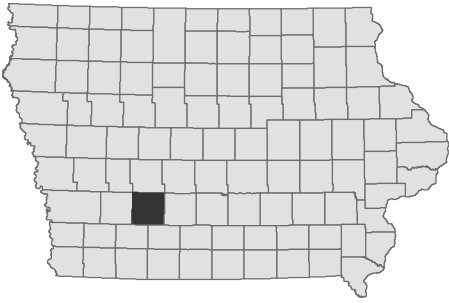


Orient Lake

Adair County



Fisheries Bureau

Contour Interval is two feet

Maximum Depth - 15.9 ft
 Mean Depth - 1.9 ft
 Area - 16 acres

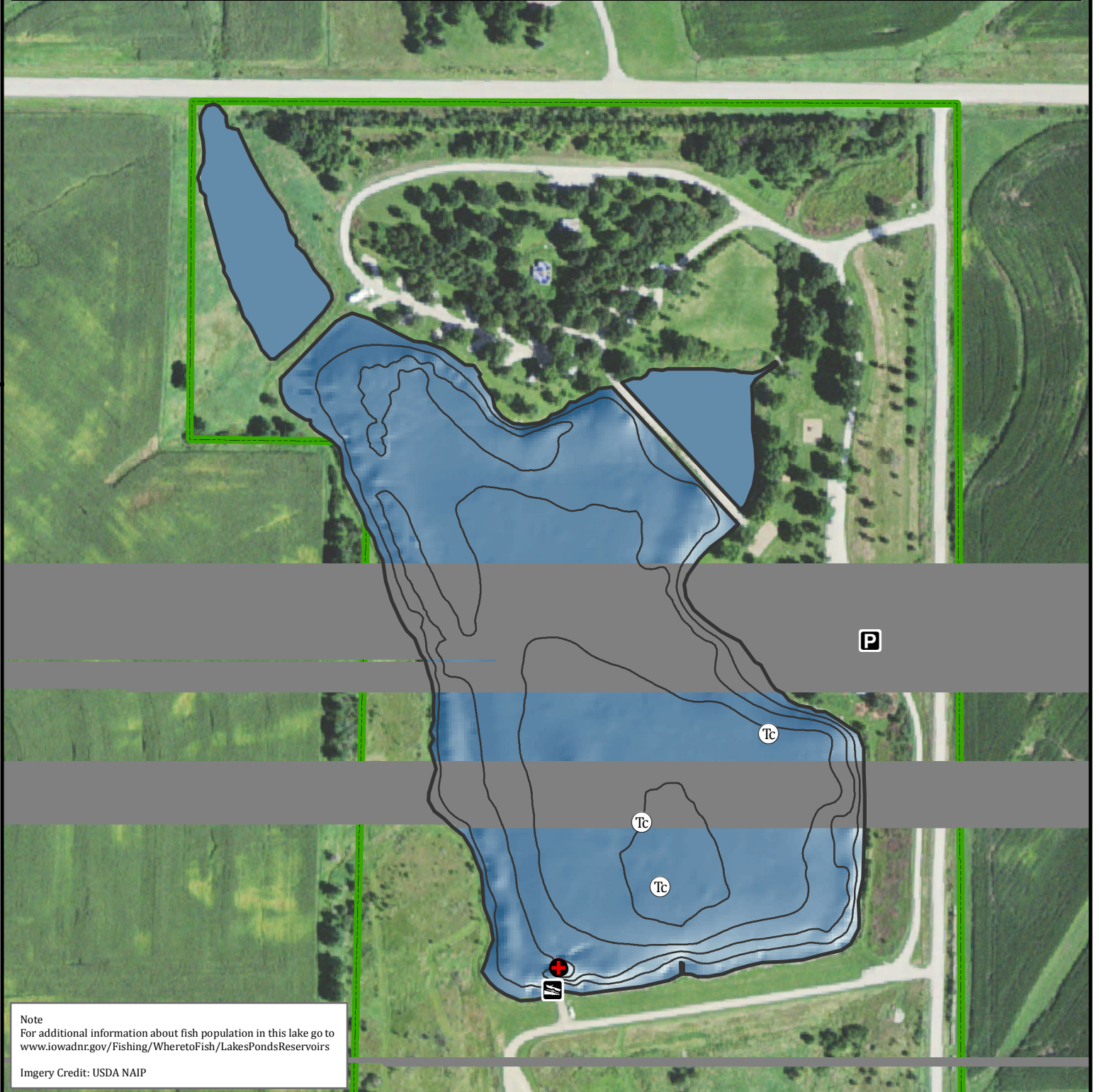
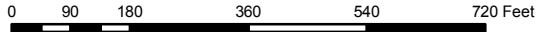
Depth adjusted to crest elevation
 Horizontal Datum NAD 83
 Coordinates are UTM Zone 15
 Map Produced ; February 2017

Fishing Structure

Trees Cedar

- Maximum Depth
- Parking
- Boat Ramp
- Public Area

GPS Coordinates for the fishing structures below can be downloaded from a GPX file located at www.iowadnr.gov/Fishing/Fishing-Maps



Note
 For additional information about fish population in this lake go to www.iowadnr.gov/Fishing/Wheretofish/LakesPondsReservoirs

Imery Credit: USDA NAIP