

Summit Lake

Union County

Contour Interval is one foot



Fisheries Bureau

Fishing Structures



Trees Cedar



Maximum Depth



Parking



Boat Ramp



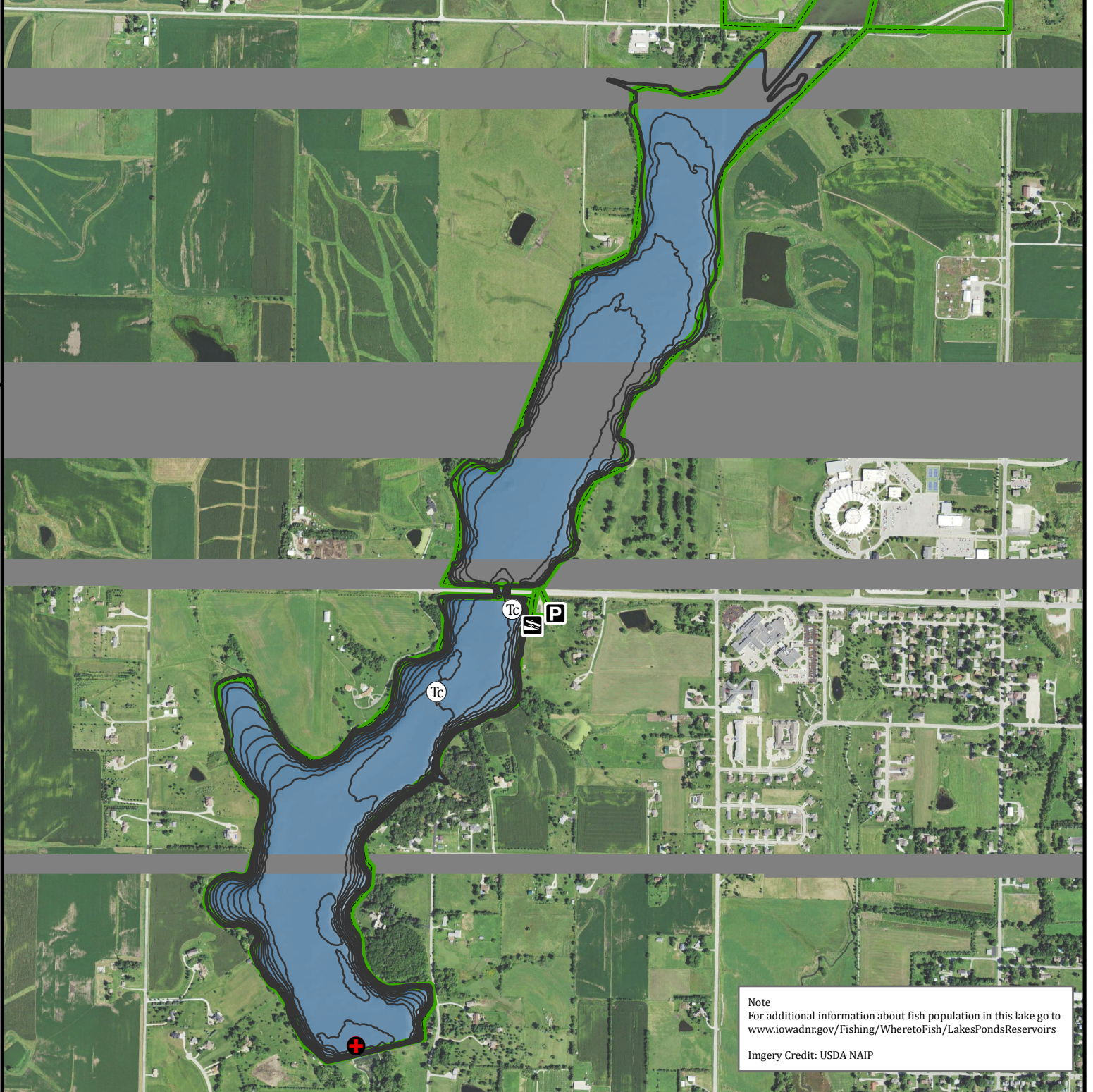
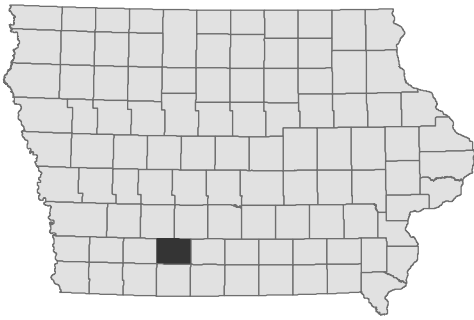
Public Area

Maximum Depth - 10.8 ft
Mean Depth - 5.9 ft
Area - 250 acres

Depth adjusted to crest elevation
Horizontal Datum NAD 83
Coordinates are UTM Zone 15
Map Produced ; February 2017

GPS Coordinates for the fishing structures below can be downloaded from a GPX file located at www.iowadnr.gov/Fishing/Fishing-Maps

0 400 800 1,600 2,400 3,200 Feet



Note
For additional information about fish population in this lake go to www.iowadnr.gov/Fishing/Wheretofish/LakesPondsReservoirs

Imagery Credit: USDA NAIP