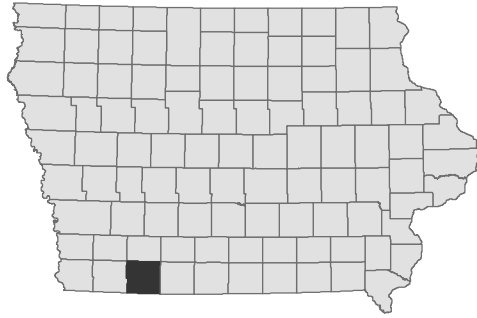


# Windmill Lake

## Taylor County

Contour Interval is two feet



Maximum Depth - 16 ft  
Mean Depth - 9 ft  
Area - 24 acres

Depth adjusted to crest elevation  
Horizontal Datum NAD 83  
Coordinates are UTM Zone 15  
Map Produced ; February 2017

### Fishing Structure

Trees Cedar

Maximum Depth

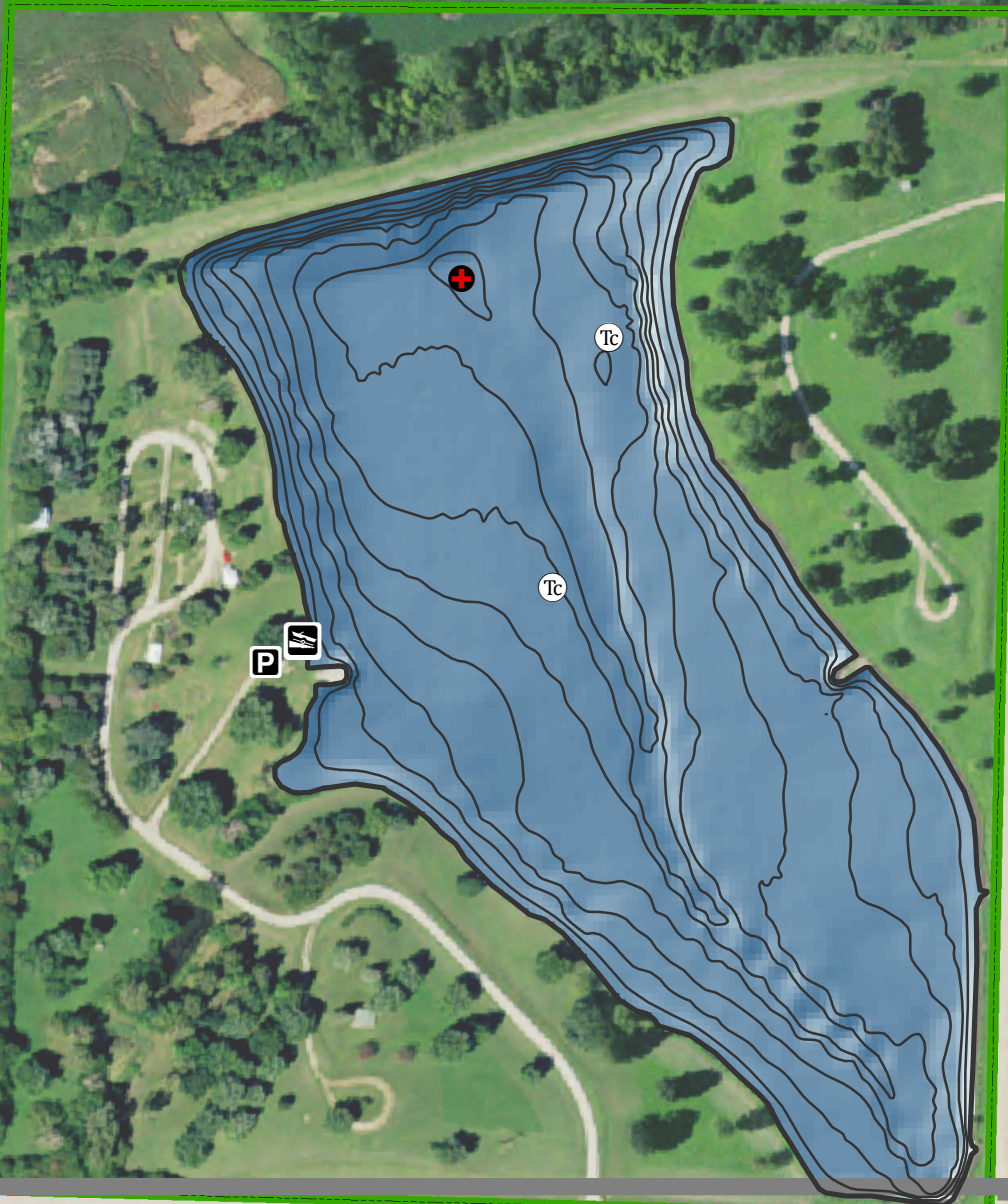
Parking

Boat Ramp

Public Area

0 90 180 360 540 720 Feet

GPS Coordinates for the fishing structures below can be downloaded from a GPX file located at [www.iowadnr.gov/Fishing/Fishing-Maps](http://www.iowadnr.gov/Fishing/Fishing-Maps)



Note  
For additional information about fish population in this lake go to [www.iowadnr.gov/Fishing/Wheretofish/LakesPondsReservoirs](http://www.iowadnr.gov/Fishing/Wheretofish/LakesPondsReservoirs)

Imagery Credit: USDA NAIP