

Lake Icaria

Adams County

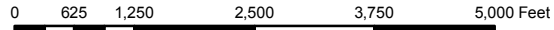
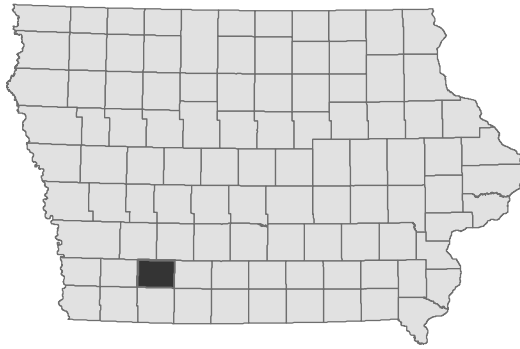
Contour Interval is two feet

Maximum Depth - 18.7 ft
 Mean Depth - 11.1 ft
 Area 74.9 acres

Depth adjusted to crest elevation
 Horizontal Datum NAD 83
 Coordinates are UTM Zone 15
 Map Produced ; Febuary 2017



Fisheries Bureau

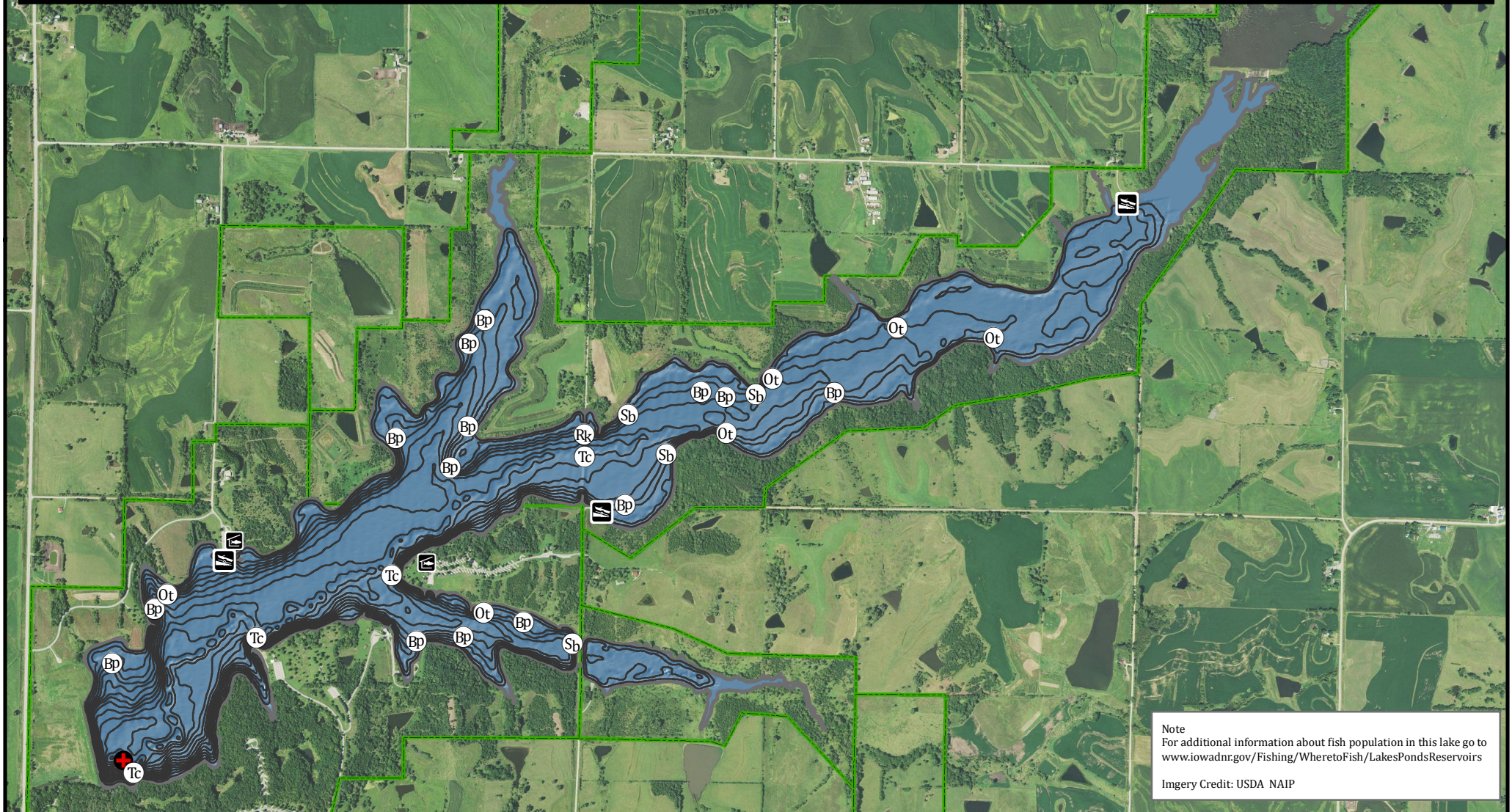


- Maximum Depth
- Fish Cleaning Station
- Parking
- Boat Ramp
- Public Area

Fishing Structure

- Brush Piles
- Other
- Rocks
- Stake Beds
- Trees Cedar

GPS Coordinates for the fishing structures below can be downloaded from a GPX file located at www.iowadnr.gov/Fishing/Fishing-Maps



Note
 For additional information about fish population in this lake go to www.iowadnr.gov/Fishing/Wheretofish/LakesPondsReservoirs
 Imagery Credit: USDA NAIP