

Fisheries Bureau

0 320 640 1,280 1,920 2,560 Feet

Prairie Rose Lake

Shellby County

Contour Interval is three feet

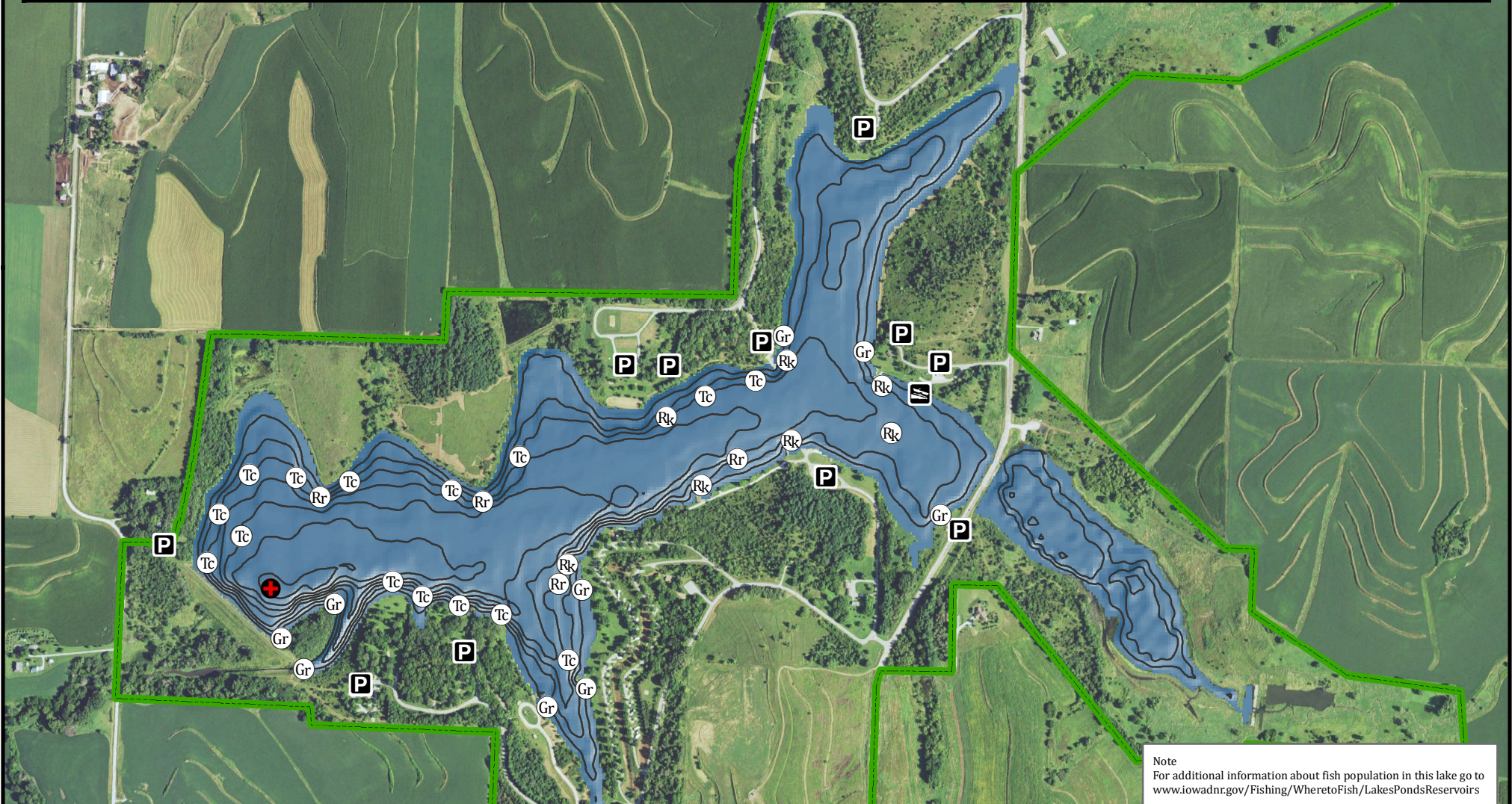
Maximum Depth - 55 ft
Mean Depth - 24 ft
Area - 401 acres

- Maximum Depth
- Parking
- Boat Ramp
- Public Area

- ### Fishing Structure
- Brush Piles
 - Rocks
 - Gravel
 - Trees Cedar
 - Rock Reefs

GPS Coordinates for the fishing structures below can be downloaded from a GPX file located at www.iowadnr.gov/Fishing/Fishing-Maps

Depth adjusted to crest elevation
Horizontal Datum NAD 83
Coordinates are UTM Zone 15
Map Produced ; February 2017



Note
For additional information about fish population in this lake go to www.iowadnr.gov/Fishing/Wheretofish/LakesPondsReservoirs

Imery Credit: USDA NAIP