

Red Haw Lake

Lucas County

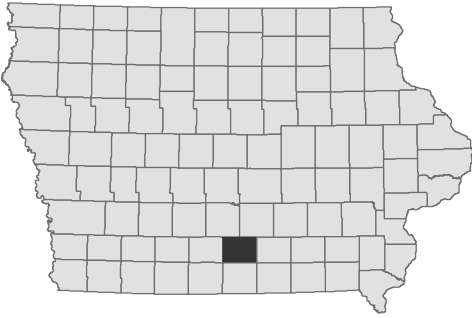
Contour Interval is four feet

Maximum Depth - 36 ft
Mean Depth - 10.7 ft
Area - 75 acres

Fishing Structures

(Sb) Stake Beds

- Maximum Depth
- Fish Cleaning Station
- Parking
- Boat Ramp
- Public Area



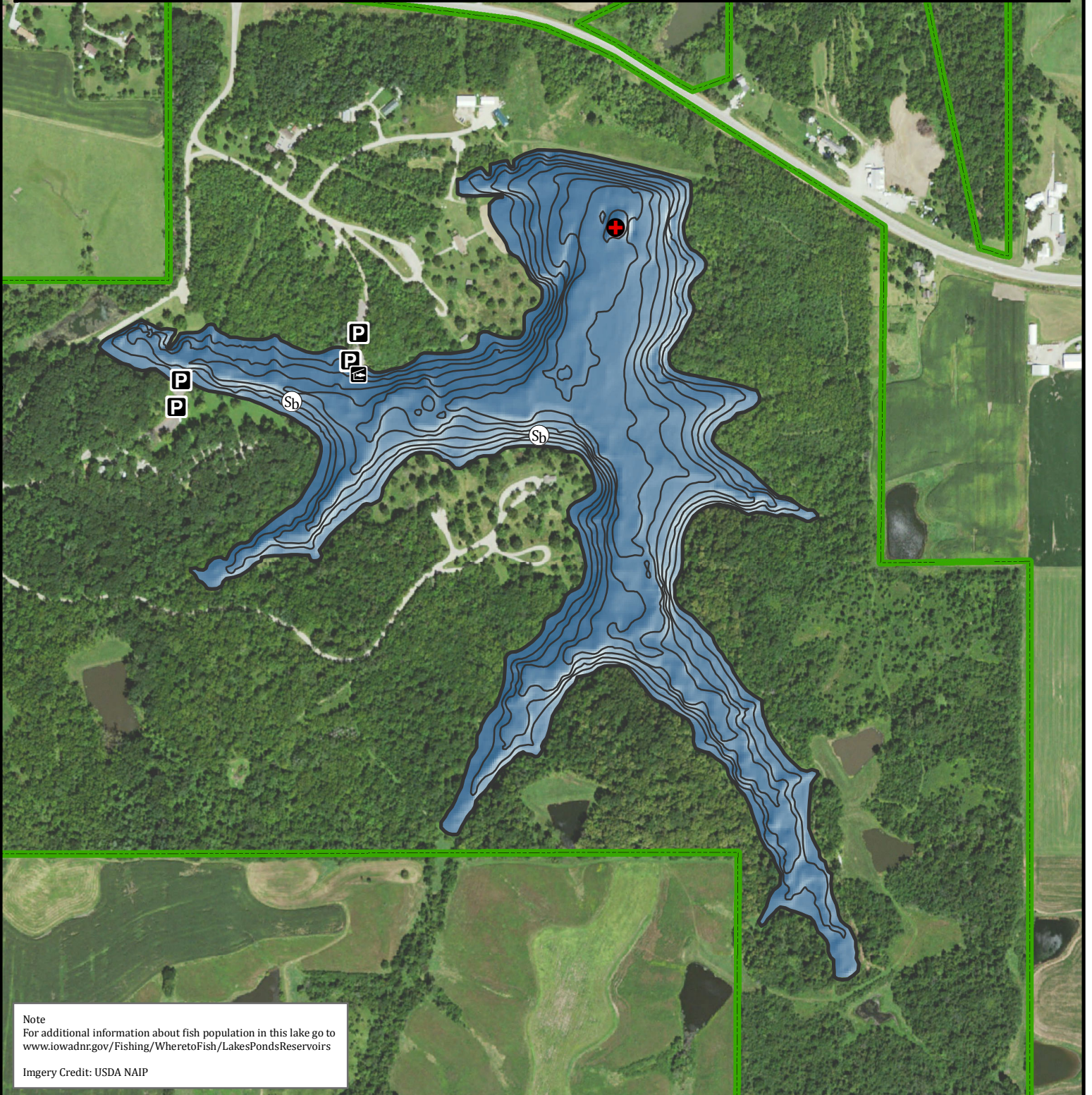
Fisheries Bureau



Depth adjusted to crest elevation
Horizontal Datum NAD 83
Coordinates are UTM Zone 15
Map Produced ; February 2017

0 200 400 800 1,200 1,600 Feet

GPS Coordinates for the fishing structures below can be downloaded from a GPX file located at www.iowadnr.gov/Fishing/Fishing-Maps



Note
For additional information about fish population in this lake go to www.iowadnr.gov/Fishing/Wheretofish/LakesPondsReservoirs

Imagery Credit: USDA NAIP