

Fisheries Bureau

Viking Lake Montgomery County

Contour Interval is four feet

Maximum Depth - 40.33 ft
Mean Depth - 13.2 ft
Area - 136 acres

Depth adjusted to crest elevation
Horizontal Datum NAD 83
Coordinates are UTM Zone 15
Map Produced ; Feburary 2017



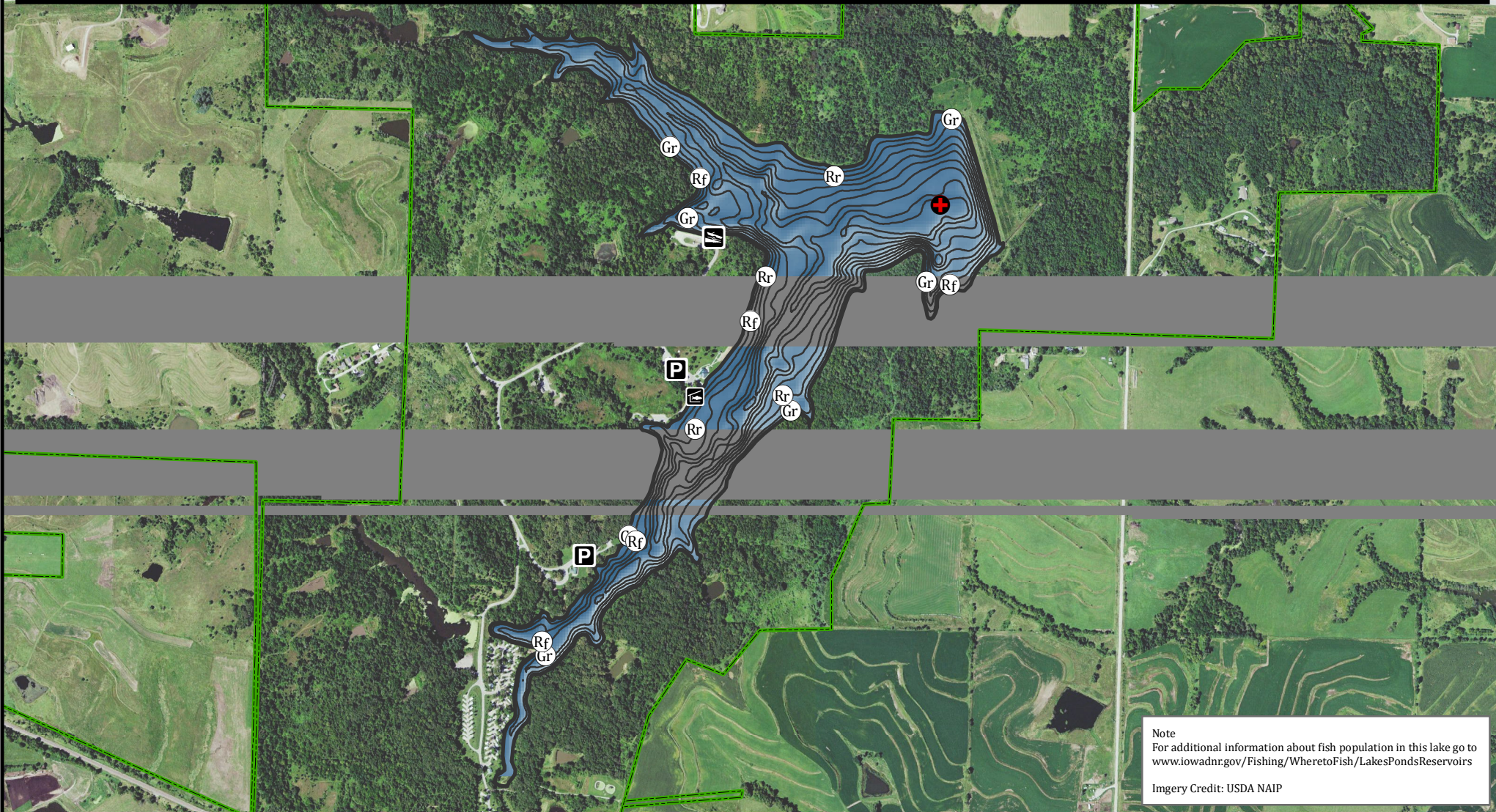
0 400 800 1,600 2,400 3,200 Feet

Fishing Structure

- Ⓞ Gr Gravel
- Ⓞ Rf Rock Fields
- Ⓞ Rr Rock Reefs

- ⊕ Maximum Depth
- 🚰 Fish Cleaning Station
- Ⓟ Parking
- 🚤 Boat Ramp
- Public Area

GPS Coordinates for the fishing structures below can be downloaded from a GPX file located at www.iowadnr.gov/Fishing/Fishing-Maps



Note
For additional information about fish population in this lake go to www.iowadnr.gov/Fishing/Wheretofish/LakesPondsReservoirs
Imgery Credit: USDA NAIP