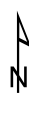
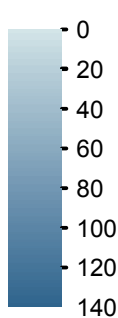


Depth (ft)



West Okobojo Lake

Dickinson County



Contour interval is five feet.

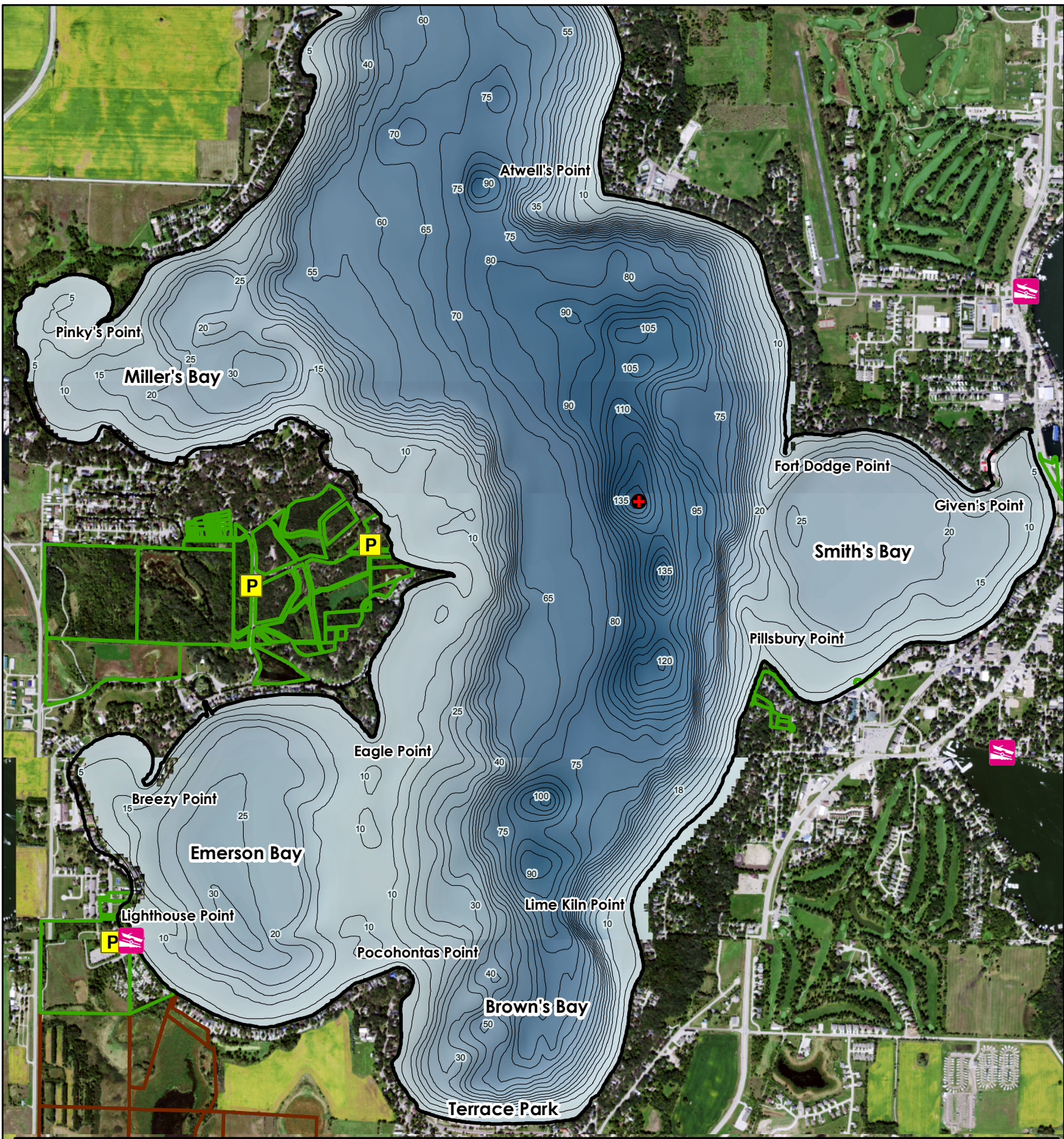


Maximum Depth - 138.9 ft
 Mean Depth - 36.6 ft
 Area - 3,889.6 acres
 Volume - 142,592 acre-ft

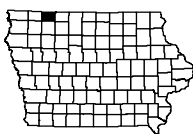
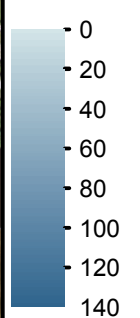
Lake mapped August 2014
 Depths adjusted to crest
 Horizontal Datum NAD 83
 Coordinates are UTM Zone 15
 Aerial Photography NAIP 2015

Legend

-  DNR Parks
-  DNR Wildlife
-  Max Depth
-  Boat Ramp
-  Parking



Depth (ft)



West Okobojo Lake

Dickinson County

Contour interval is five feet.

Maximum Depth - 138.9 ft
 Mean Depth - 36.6 ft
 Area - 3,889.6 acres
 Volume - 142,592 acre-ft

Legend

- DNR Parks
- DNR Wildlife
- Max Depth
- Boat Ramp
- Parking



Lake mapped August 2014
 Depths adjusted to crest
 Horizontal Datum NAD 83
 Coordinates are UTM Zone 15
 NAIP 2015 Aerial Imagery