

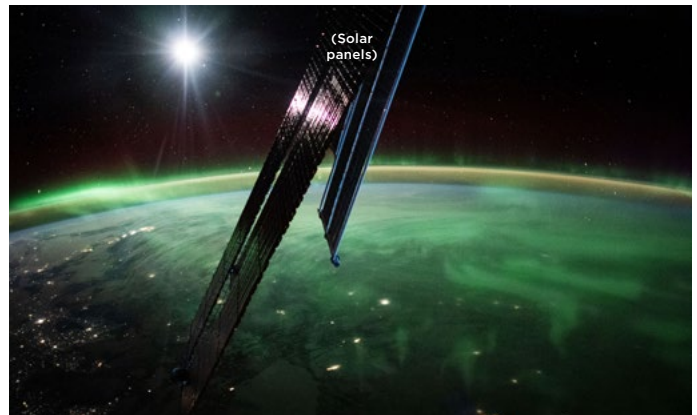
Joint Polar Satellite System Aurora Art!

Joint Polar Satellite System (JPSS) is a series of polar-orbiting satellites that provide critical data for weather forecasting, climate monitoring, and environmental research. The JPSS program is a collaboration between NOAA and NASA.



Aurora borealis over a landscape. Photo by NOAA.

The JPSS program includes several satellites, including the Suomi NPP (National Polar-orbiting Partnership) satellite, which is the first satellite in the JPSS program. The Suomi NPP satellite is a joint effort between NOAA and NASA.



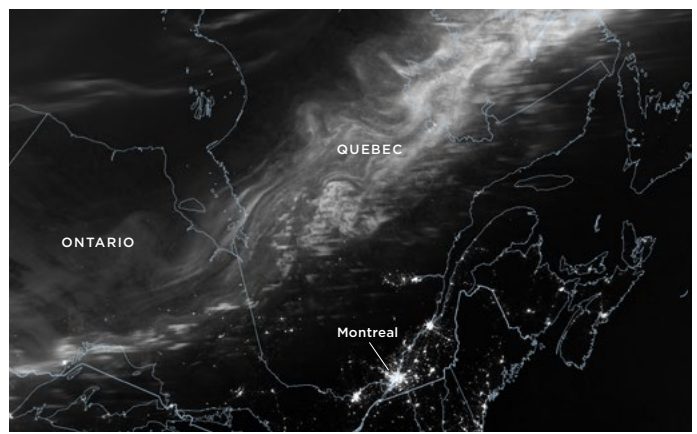
Aurora from space with solar panels. Photo by NOAA, February 27, 2023. [Link](#)

The JPSS program is a critical part of the Earth's environmental monitoring system. It provides data that is used to understand the Earth's climate system and to predict weather events.

The JPSS program is a joint effort between NOAA and NASA. It is a key component of the Earth's environmental monitoring system.

How does the aurora borealis happen?

The aurora borealis is a natural light display in the Earth's sky, predominantly seen in the high-latitude regions (around the Arctic and Antarctic). It is caused by the interaction of the Earth's magnetic field with charged particles from the solar wind.



Aurora over a map of North America. Photo by NPP, February 28, 2023. [Link](#)



JOINT POLAR SATELLITE SYSTEM (JPSS)

NOAA and NASA are working together to launch the Joint Polar Satellite System (JPSS) to improve weather forecasting and climate monitoring.

Website: [http://www.jpss.gov](#)

Facebook: [https://www.facebook.com/jpss](#)

X: [https://twitter.com/jpss](#)

Objectives

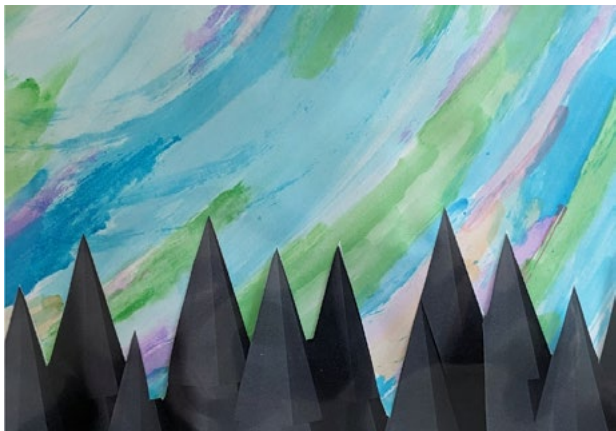
By the end of this lesson, students will be able to:

- Identify the colors of the aurora borealis.
- Create a colorful aurora borealis using watercolors or tissue paper.
- Use black paper to create a silhouette of a mountain range.

Craft a Colorful Aurora with Watercolors

You will need

- Watercolor paper
 - Paintbrushes
 - Water
 - Black paper
 - Glue
1. Lay out a sheet of watercolor paper on a flat surface.
 2. Using a paintbrush, apply a layer of light blue watercolor paint to the top half of the paper. Blend this into a layer of light green, then a layer of light purple, and finally a layer of light pink. The colors should blend together to create a soft, ethereal glow.
 3. Cut out a series of black triangles of varying heights from a piece of black paper. These will represent the silhouettes of mountains.



Create a Colorful Tissue Paper Aurora

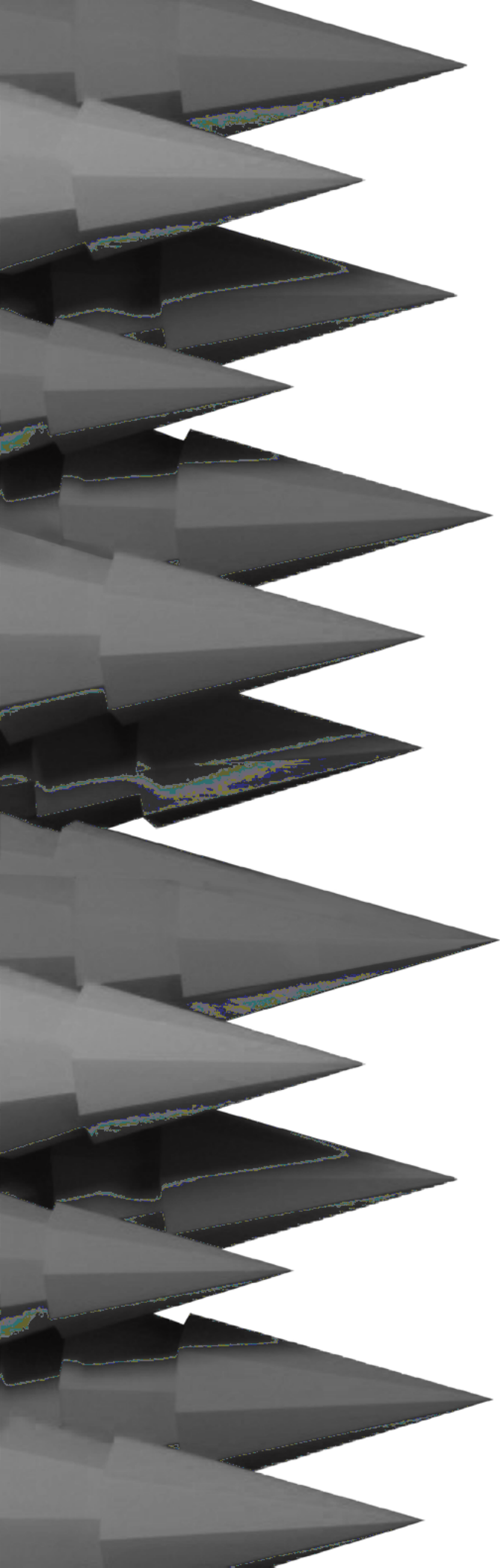
You will need

- Tissue paper
 - Paintbrushes
 - Water
 - Black paper
 - Glue
1. Lay out a sheet of tissue paper on a flat surface.
 2. Using a paintbrush, apply a layer of light blue watercolor paint to the top half of the paper. Blend this into a layer of light green, then a layer of light purple, and finally a layer of light pink. The colors should blend together to create a soft, ethereal glow. *Tip: Don't use too much paint, as the tissue paper will become too saturated.*
 3. Cut out a series of black triangles of varying heights from a piece of black paper. These will represent the silhouettes of mountains.



Other Aurora Art Ideas:

- Create a aurora borealis using colored pencils.
- Draw a aurora borealis using markers.
- Create a aurora borealis using colored paper.
- Draw a aurora borealis using colored ink.
- Create a aurora borealis using colored fabric.



Graphic: Kristin B. Jones for Mountain Life

