

Delaware River Basin Commission

Plenary Session

*New Jersey Water Environment
Association*

*Steve Tambini, Executive Director,
DRBC*

May 8, 2019



Photo: <http://pariveroftheyear.org/wp-content/uploads/2014/01/cody20102.jpg>

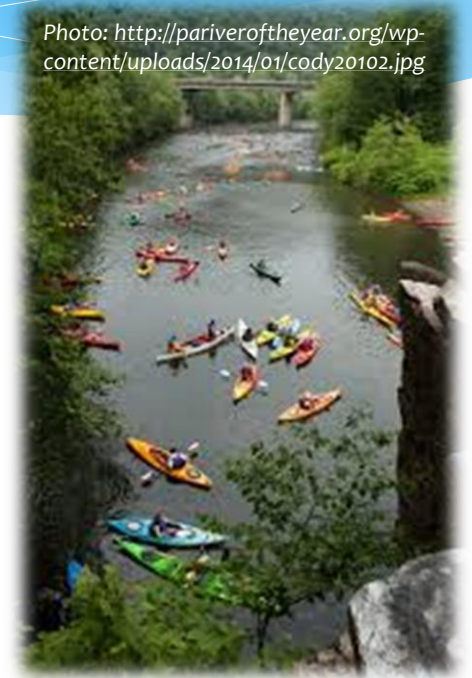


Photo courtesy of U.S. Army Corps of Engineers





Delaware River Basin Commission

DELAWARE • NEW JERSEY
PENNSYLVANIA • NEW YORK
UNITED STATES OF AMERICA

Today's Agenda

- Who we are (and who we “are not”).
- What we do.
- One case study.
- Regulatory collaboration.



Photo: Keith Balderston

Who are we?



Delaware River
Joint Toll Bridge
Commission



Delaware River and Bay Authority



Delaware Watershed
Research Fund



DELAWARE RIVER
PORT AUTHORITY
of Pennsylvania & New Jersey[®]

Delaware River Basin Commissioners



New Jersey Governor, Phil Murphy,
DRBC Chair



New York Governor, Andrew Cuomo,
DRBC Vice Chair



Pennsylvania Governor, Tom Wolf



Delaware Governor, John Carney



Major General, Jeffrey Milhorn,
US Army Corps of Engineers



Delaware River Basin Commission

■ Five Equal Members:

■ Delaware



■ New Jersey



■ Pennsylvania



■ New York



■ Federal Government

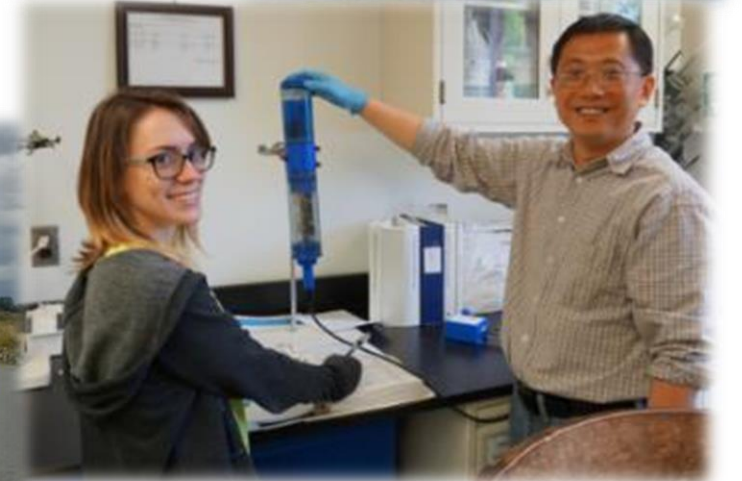


- Four Governors are the Commissioners
- Commissioner may select alternates
- Federal Commissioner is Commanding General, USACE, NAD
- Majority rules in most voting
- Meets quarterly

Note: New York City and Philadelphia are “advisors” and not members

DRBC Staff and Budget

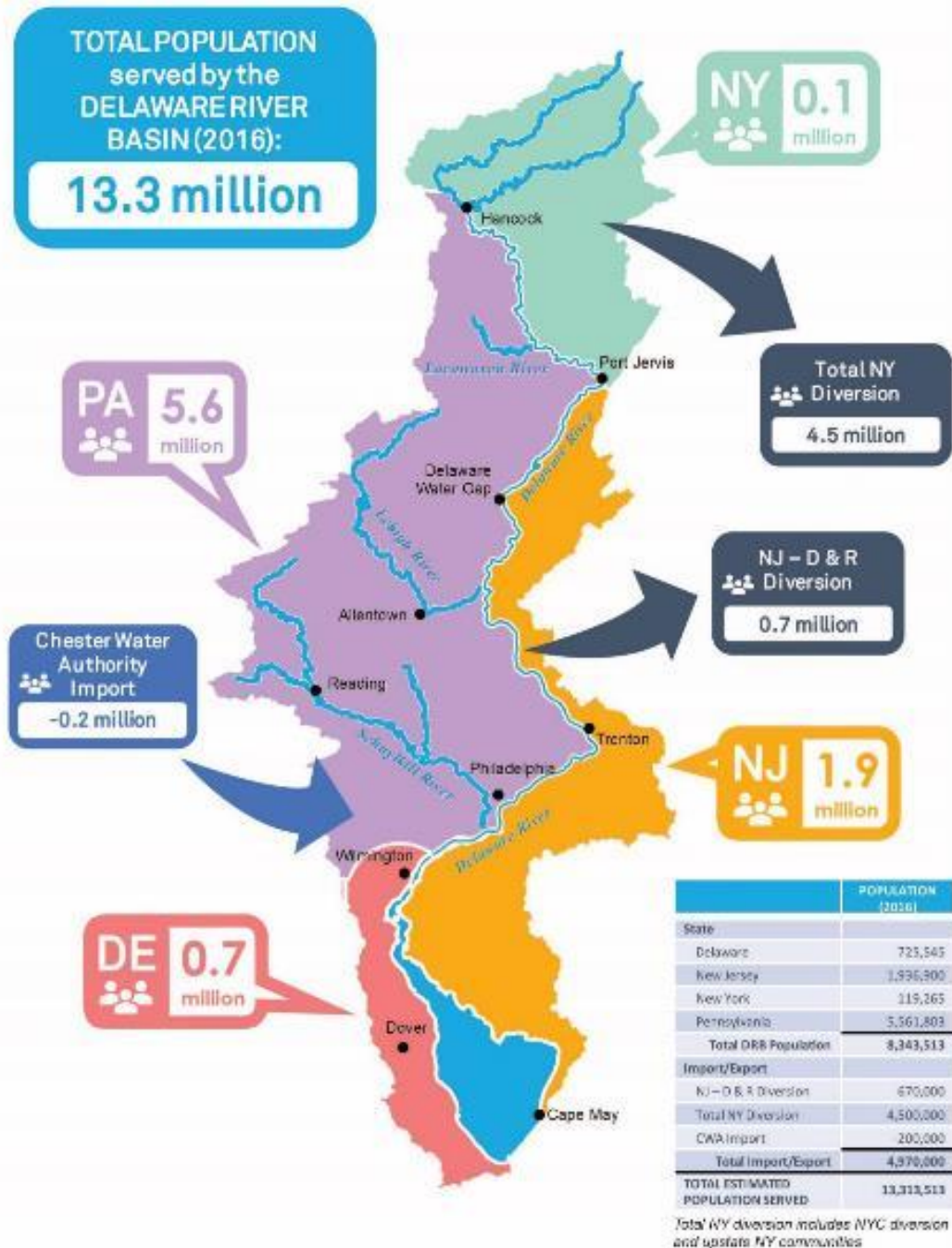
- Professional Planners, Engineers and Scientists
- 39 Budgeted Staff (12% Vacancy Rate)
- FY2019 Budget = \$6.3 million
- Funding from “Signatory Members” = \$1.7 M (27%)
- Located in West Trenton, NJ since 1974



The Delaware River

- 330 miles long
- Interstate boundary its entire length
- Longest, un-dammed U.S. river east of the Mississippi (dams are located on tributaries, not the main stem Delaware)
- Tidal to Trenton, NJ





The Delaware River Basin

- ~13 million people (about 5% of the U.S. population) rely on its waters
- Provides half the drinking water to NYC
- Drains 13,539 square miles of watershed in 4 states
- 6.4 billion gallons are withdrawn every day
- Contributes over \$21B in economic value

The Delaware River “Today”



Photo: Delaware River Sojourn



Photo: Nicholas A. Tonelli



Photo: Keith Balderston



Photo: <https://camdenwd.weebly.com/>



Photo: Delaware River Sojourn

It Used to Look Like...








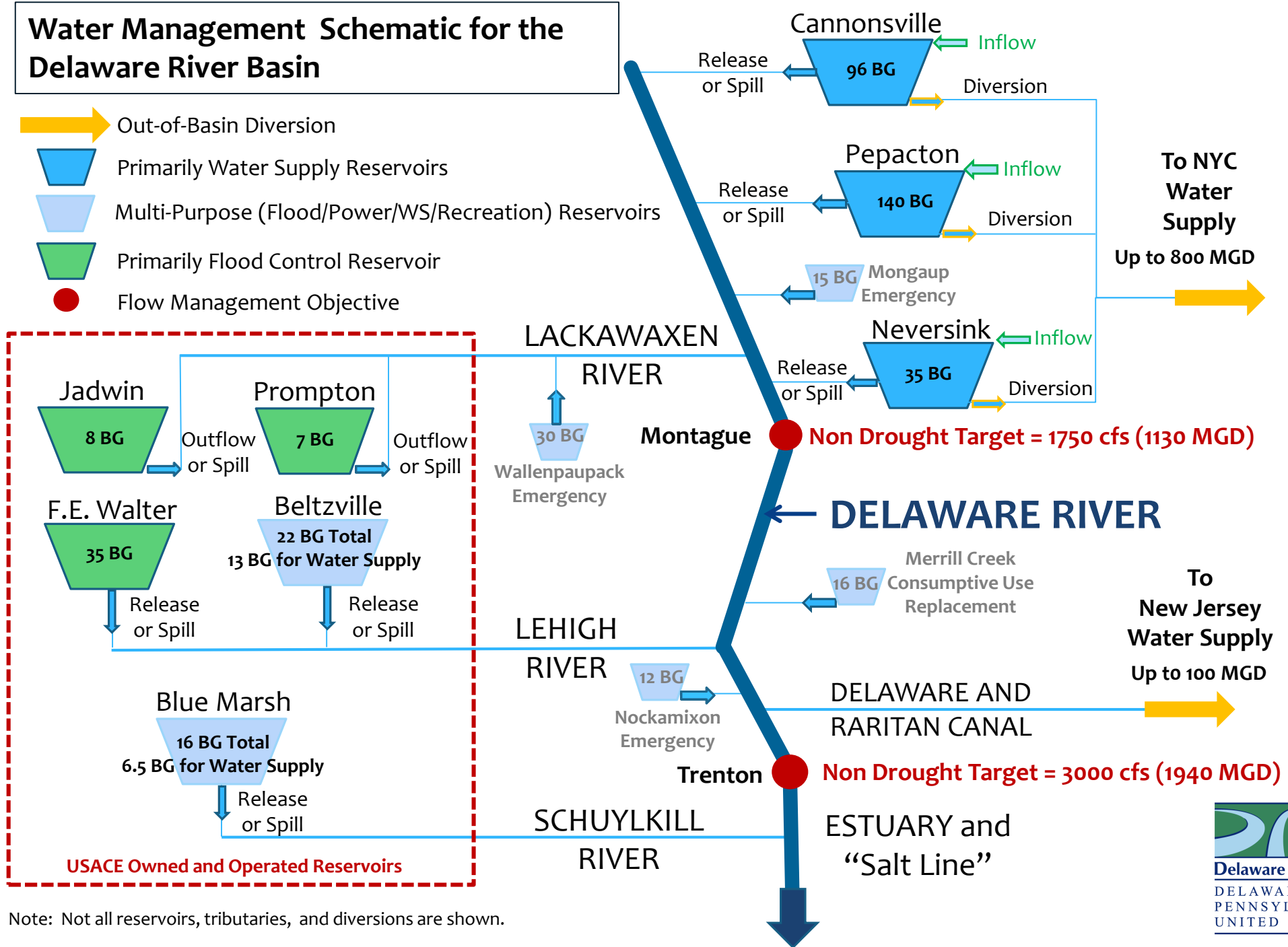
*Slaughterhouses discharging in 1928
(PWD Historic Collection)*



*Fish kill on the Delaware from oil spill in 1929
(Temple Archives)*

Water Management Schematic for the Delaware River Basin

-  Out-of-Basin Diversion
-  Primarily Water Supply Reservoirs
-  Multi-Purpose (Flood/Power/WS/Recreation) Reservoirs
-  Primarily Flood Control Reservoir
-  Flow Management Objective



Note: Not all reservoirs, tributaries, and diversions are shown.



And Sometimes It Looked Like...



Delaware River at Washington Crossing in April 2005



Delaware River at Trenton in 1965

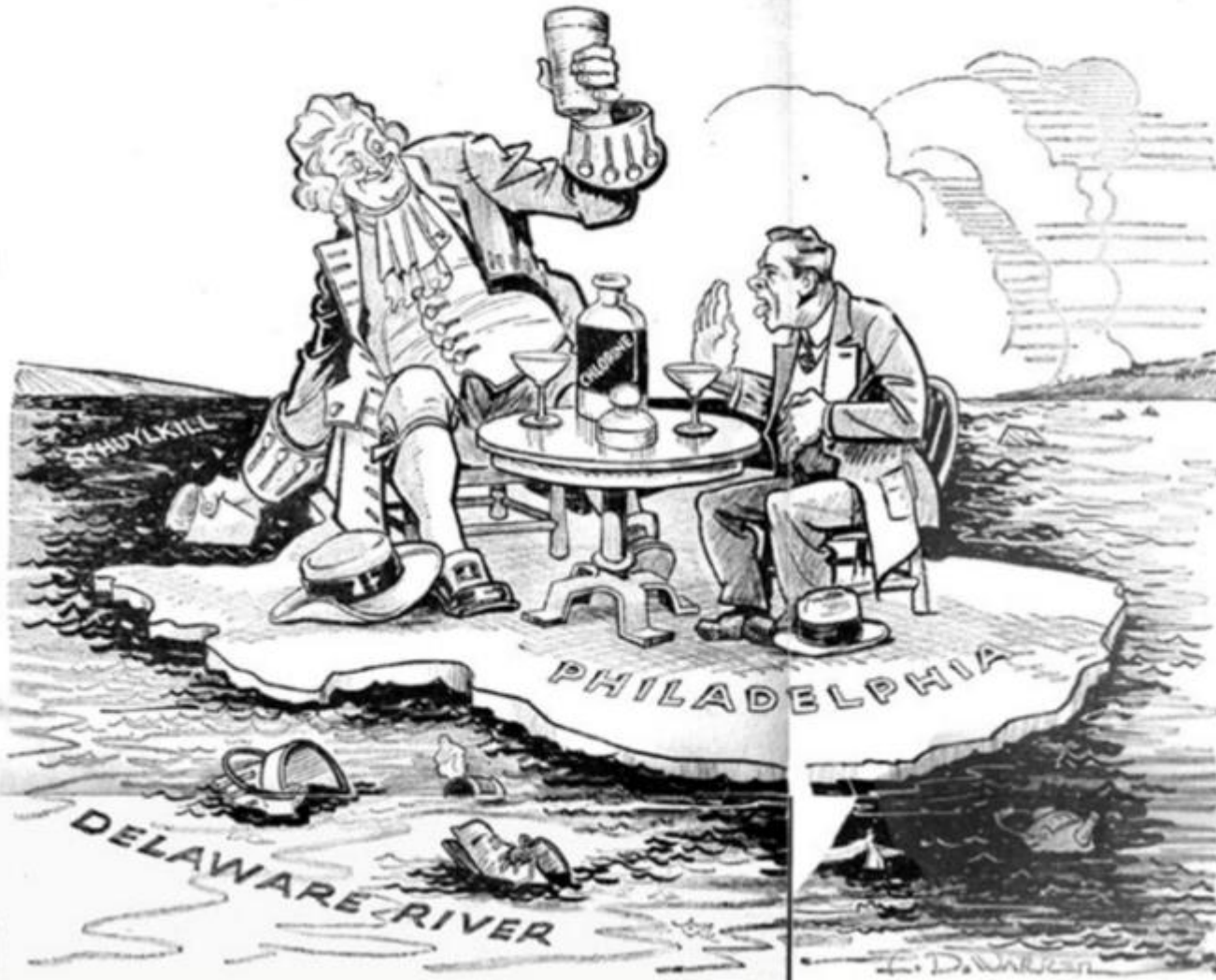
EDITORIAL PAGE
PHILADELPHIA RECORD

The War in Outline :: America Speaks :: Travel

SUNDAY, MARCH 14, 1937

Sports :: Stage :: Music :: Art :: Radio :: Puzzles

WATER, WATER EVERYWHERE, BUT NOT A DROP FIT TO DRINK.

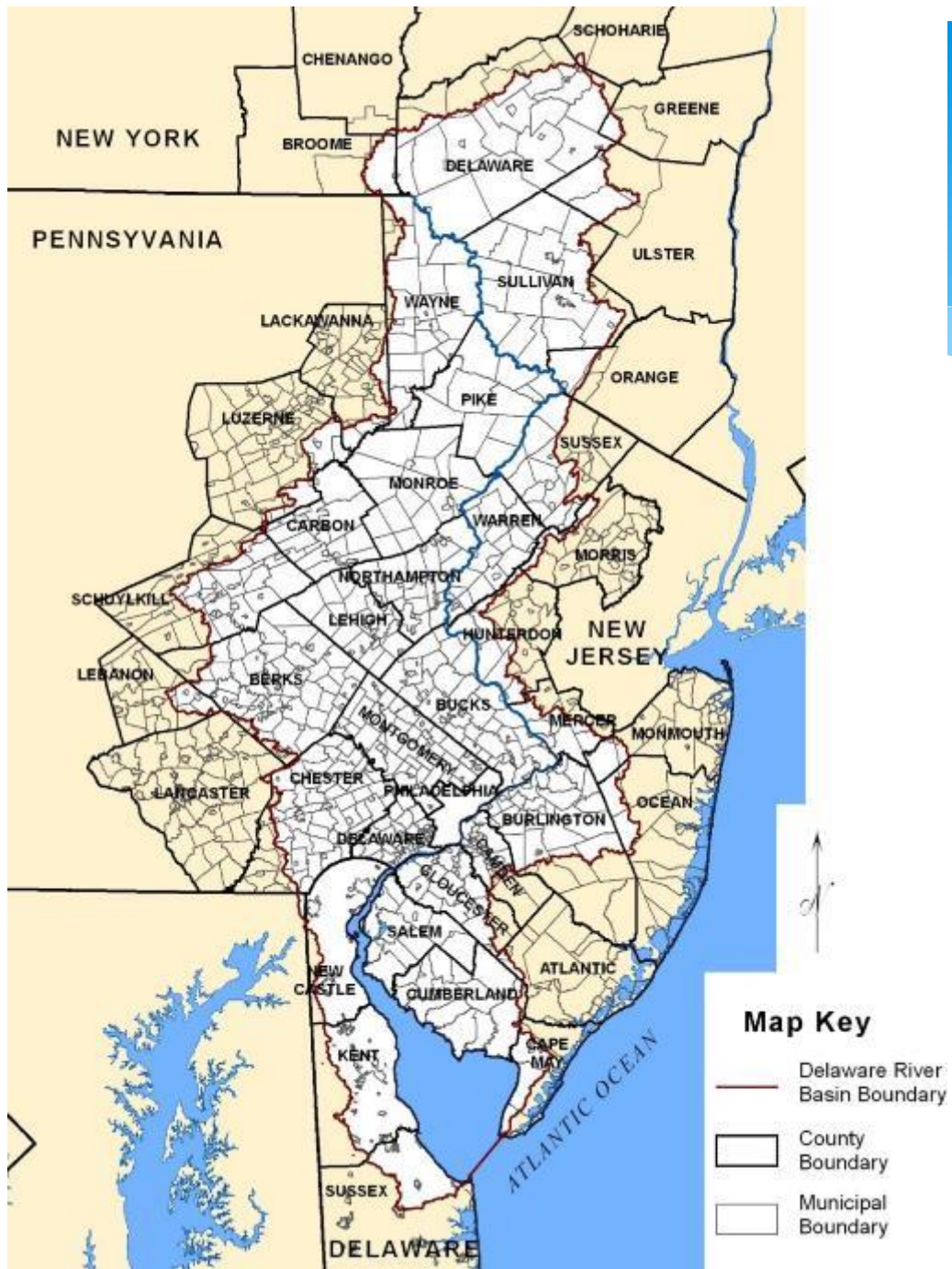


The Problems

- Water supply shortages and disputes over the apportionment of the basin's waters
- Severe pollution in the Delaware River and its major tributaries
- Serious flooding

The Challenge

- 4 States
- 42 Counties
- 838 Municipalities
- NY City



The Solution: The Delaware River Basin Commission

- 1961 – President Kennedy and the four Basin State Governors sign the Delaware River Basin Compact, the federal/state law that formed the Delaware Basin Commission (DRBC)



Delaware River Basin Compact

- Recognizes DRB as a regional asset with local, state and national interests
- Management and control of water resources under a **Comprehensive Plan** will bring benefits and is in the public welfare
- The Commission shall develop and effectuate **plans, policies and projects** relating to the water resources of the Basin



DRB Compact Basic “Charges” From the Preamble

A Comprehensive **Plan** administered by a basin wide agency will provide:

- **abatement and control of stream pollution;**
- **conservation and development of ground and surface water supply...;**
- **development of recreational facilities;**
- **propagation of fish and game;**
- **promotion of related...watershed projects;**
- **protection to fisheries...;**
- **development of hydroelectric power;**
- **control of movement salt water;**
- **flood damage reduction;**
- **and **regulation** towards the attainment of these goals.**

DRBC Core Responsibilities

- **FLOW** - An adequate and sustainable supply of water.
- **QUALITY** - Clean and healthy water resources.



View from Bowman Hill Tower by Linda Park

The Quality of Basin Waters Shall Be Maintained For:

- Public drinking water (after reasonable treatment)
- Recreation
- Wildlife, fish and other aquatic life
- Regulated waste assimilation



Delaware River at Point Mountain by David B. Soete

In the News

WHYY News Radio & Podcasts TV Arts Events Education

SCIENCE ENVIRONMENT

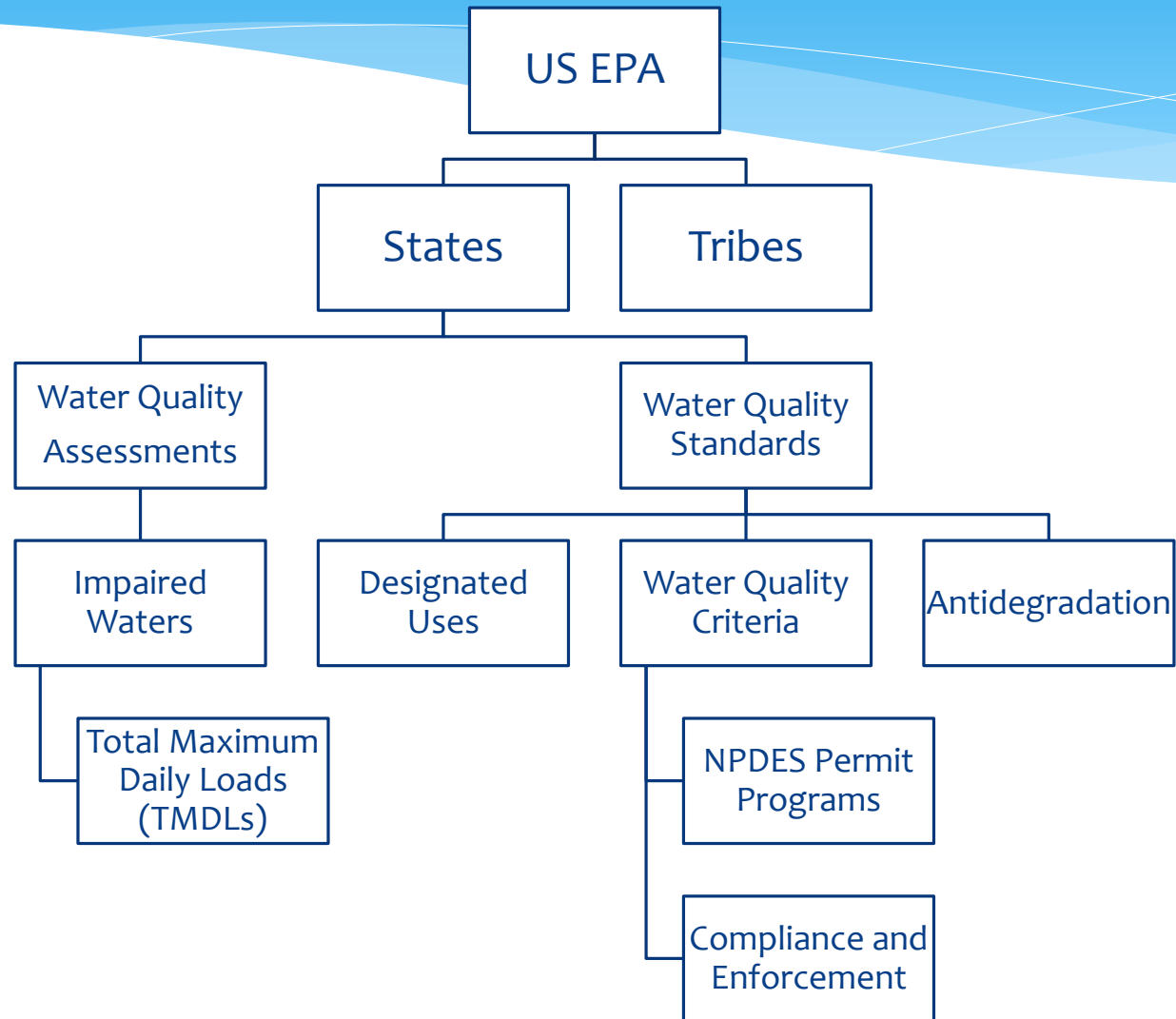
REVIVING THE RIVER

How the Clean Water Act fixed the Delaware River's pollution problem

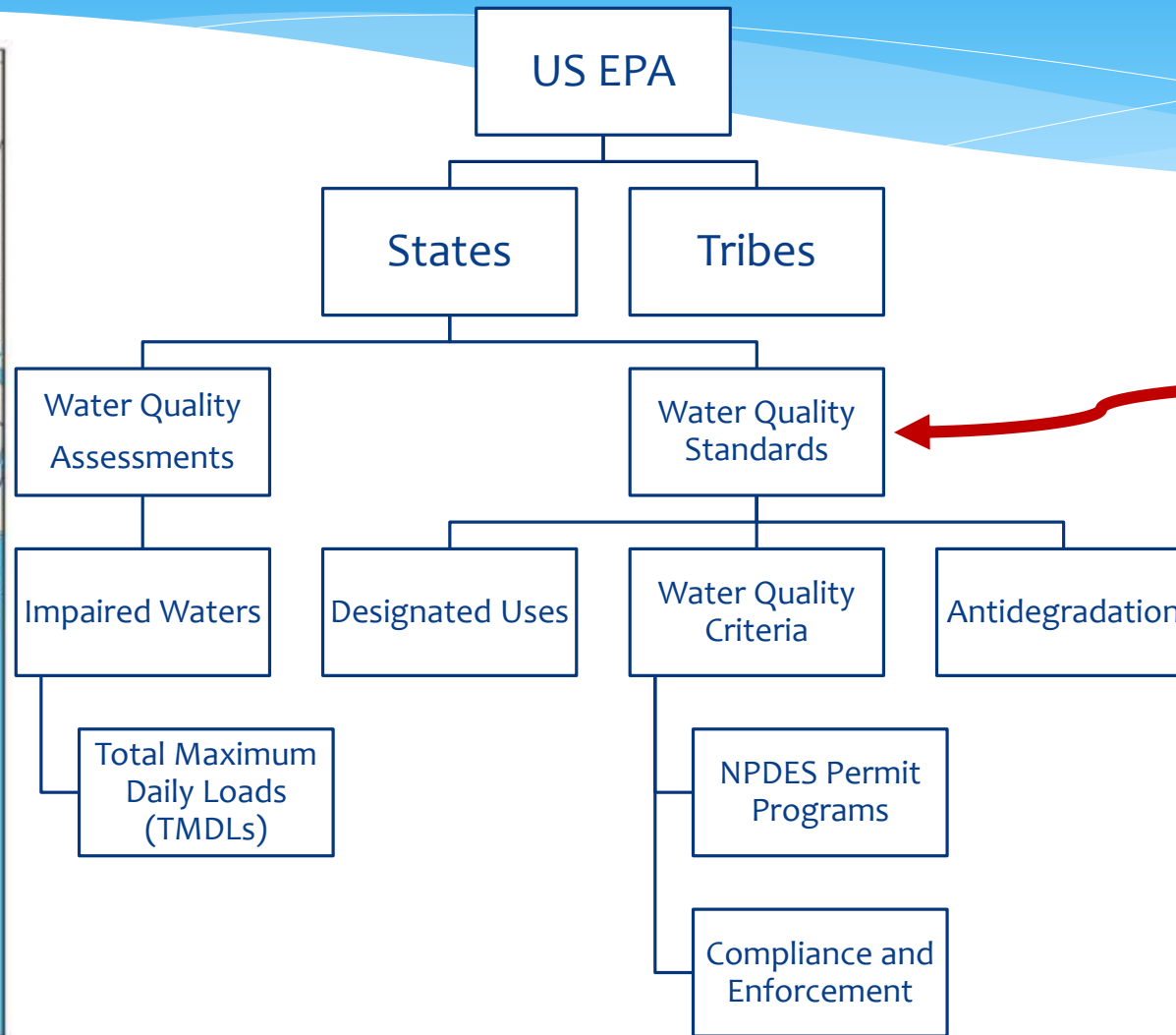
By Susan Phillips · January 15, 2019

<https://why.org/articles/how-the-clean-water-act-fixed-the-delaware-rivers-pollution-problem/>

Clean Water Act Responsibilities



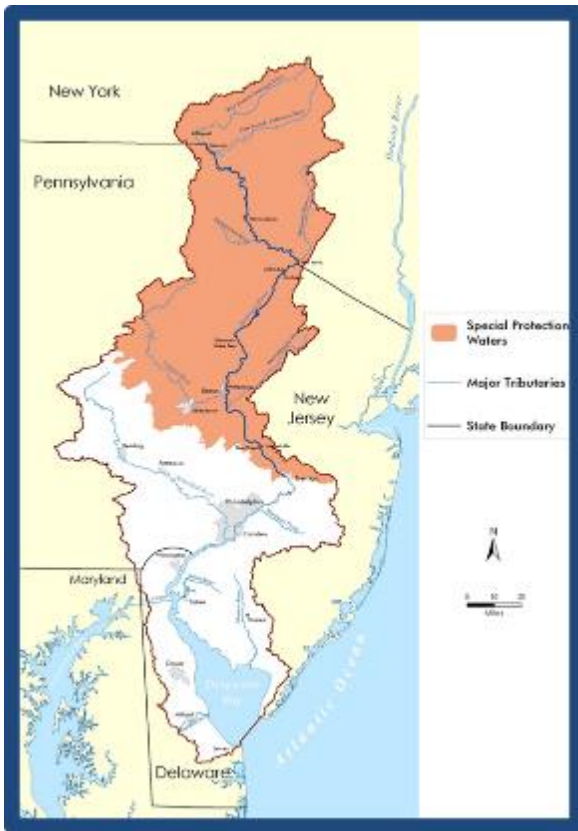
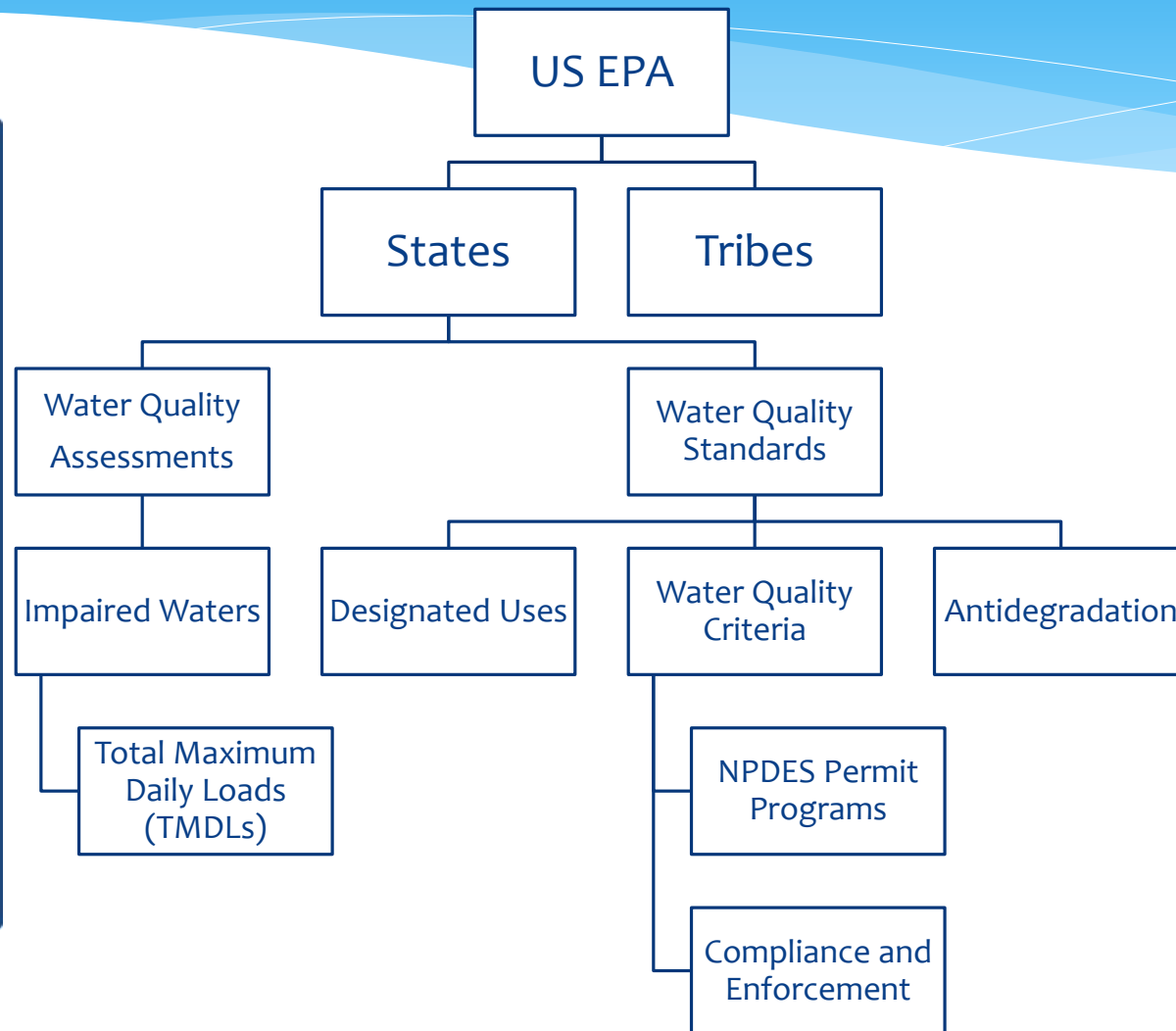
Clean Water Act Responsibilities



For Main Stem Delaware River Interstate Waters:

- DRBC establishes or revises WQ Standards, WQ Criteria and Designated Uses.
- State WQ Regulations refer to or defer to DRBC WQ Standards.

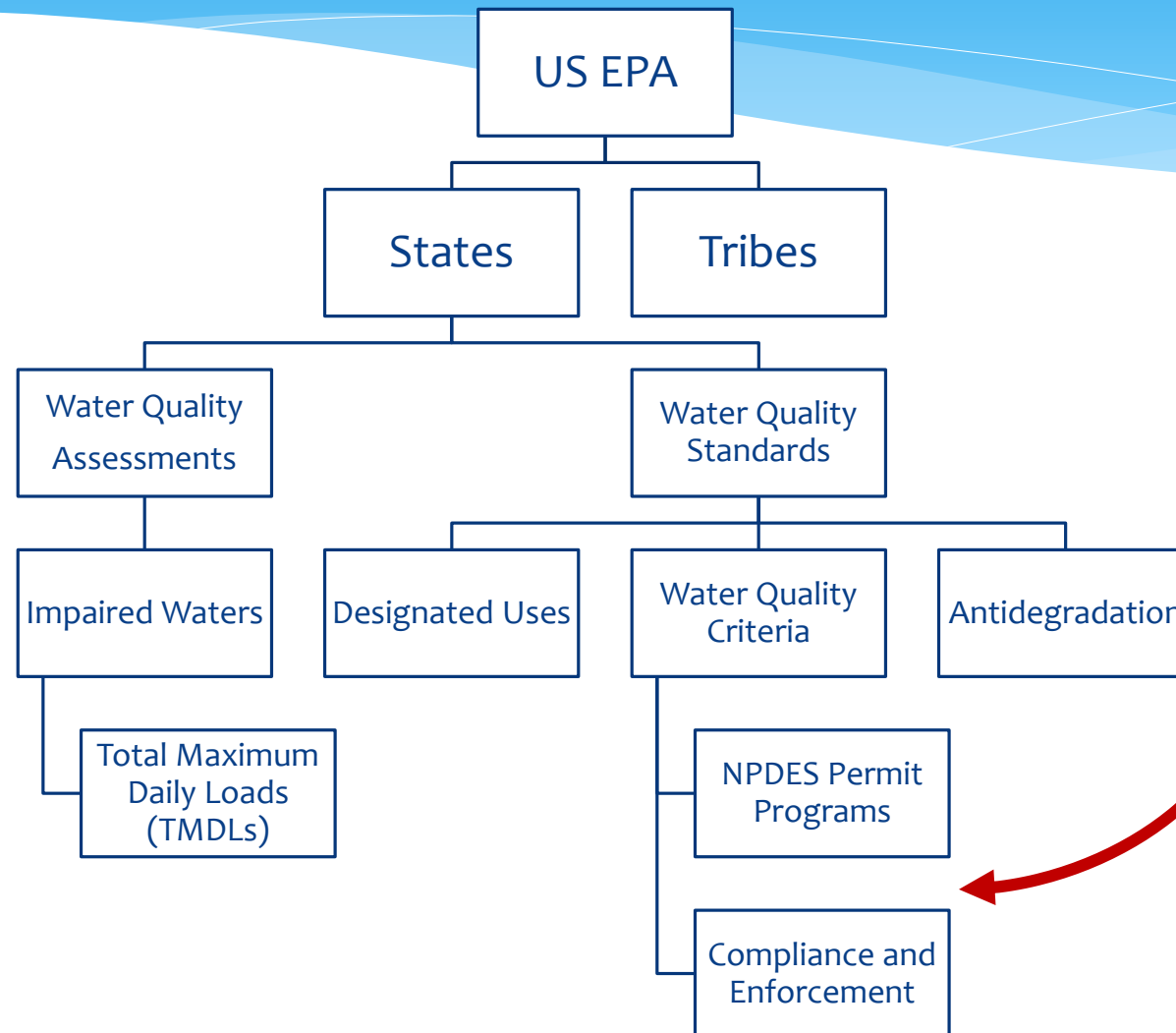
Clean Water Act Responsibilities



For Main Stem Delaware River Interstate Waters:

- DRBC established Special Protection Waters for the entire main stem upstream from Trenton.

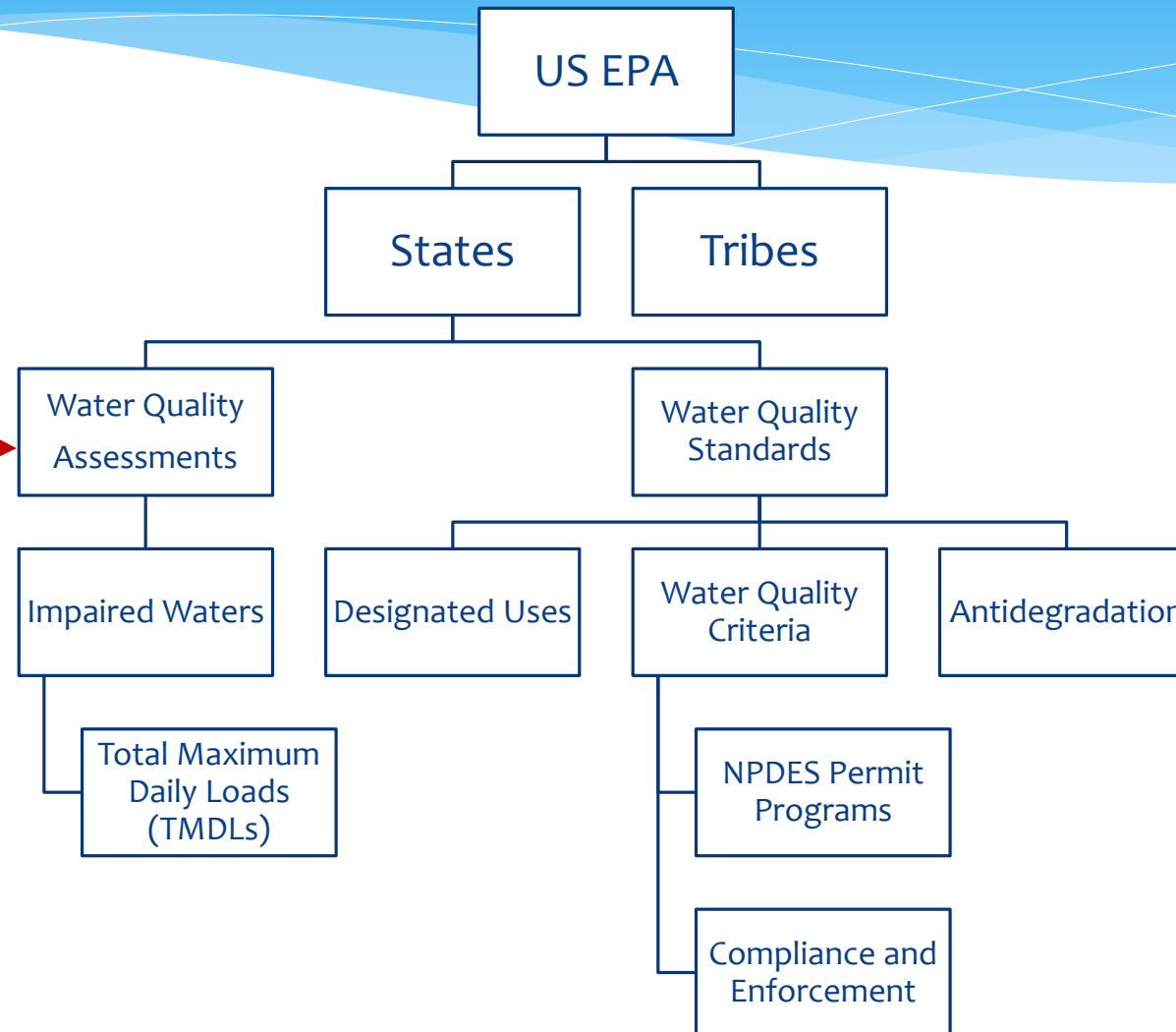
Clean Water Act Responsibilities



For Main Stem Delaware River Interstate Waters:

- DRBC uses docket approvals or administrative agreements to implement and enforce water quality criteria.
- Both are added to the DRBC Comprehensive Plan.

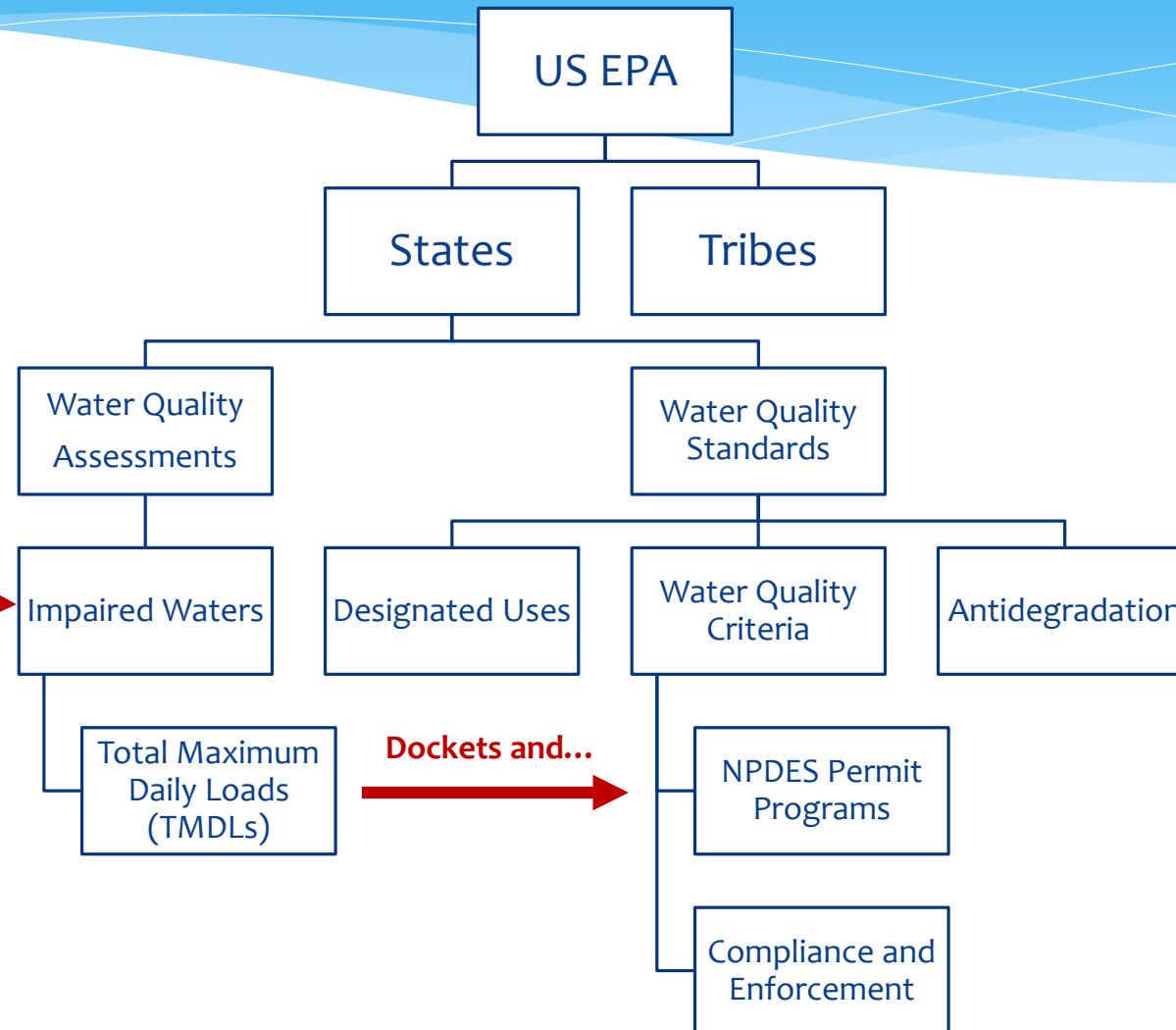
Clean Water Act Responsibilities



For Main Stem Delaware River Interstate Waters:

- DRBC Conducts Monitoring and Assessments.
- States use the DRBC main stem assessment as part of their reports to US EPA.

Clean Water Act Responsibilities



For Main Stem Delaware River Interstate Waters:

- DRBC leads impaired waters recovery.
- Models improvement plans
- Establishes “pollution budgets” or waste allocations.
- Sets interim and long term standards, goals and plans.

The Next Chapter

The screenshot shows the Delaware River Basin Commission (DRBC) website. At the top left is the DRBC logo with the text 'Delaware River Basin Commission' and 'DELAWARE • NEW JERSEY PENNSYLVANIA • NEW YORK UNITED STATES OF AMERICA'. To the right is a search bar with 'Index A-Z | Search' and a 'Submit' button. Below the logo is a navigation menu with 'Home', 'About DRBC', 'Basin Information', 'Hydrological Information', 'Water Quality Information', 'Programs', 'Meetings', and 'Contact DRBC'. Social media icons for RSS, Twitter, Facebook, YouTube, Instagram, and LinkedIn are also present. A secondary navigation bar includes 'Conventional Pollutants', 'Toxic Pollutants', 'Reports/Assessments', 'Data', 'Alert Tools', and 'Other Links'. The main content area shows a breadcrumb trail: 'Home > Water Quality Information > Conventional Pollutants > Dissolved Oxygen > DRBC's Designated Use Study'. The article title is 'DRBC's Designated Use Study'. The sub-header is 'The Next Chapter in Delaware Estuary Water Quality Improvements'. The text describes a resolution approved in September 2017 regarding water quality improvements in the Delaware River Estuary. A sidebar on the right lists categories: Bacteria, Chlorides, Dissolved Oxygen, and Nutrients. At the bottom right is a photo of a bridge over a river.

Delaware River Basin Commission
DELAWARE • NEW JERSEY
PENNSYLVANIA • NEW YORK
UNITED STATES OF AMERICA

Index A-Z | Search Submit

Home About DRBC Basin Information Hydrological Information Water Quality Information Programs Meetings Contact DRBC

Conventional Pollutants | Toxic Pollutants | Reports/Assessments | Data | Alert Tools | Other Links

Home > Water Quality Information > Conventional Pollutants > Dissolved Oxygen > DRBC's Designated Use Study

DRBC's Designated Use Study

The Next Chapter in Delaware Estuary Water Quality Improvements

The DRBC approved a [resolution in September 2017](#) (pdf 249 KB) recognizing the significant water quality improvements in the Delaware River Estuary and providing for a formal review of the designated aquatic life uses and water quality criteria necessary to support these uses.

The resolution outlines a deliberative, scientific process to further study evidence on the reproduction of resident and migratory fish in a 38-mile section of the tidal Delaware River stretching from Wilmington, Del. to just above the Tacony-Palmyra Bridge connecting Philadelphia and New Jersey. This study will allow the commission to determine the "designated use" of this reach of the river and provide data and information to establish revised water quality criteria to protect that use. It also affirms the important goal of continued water quality improvement.

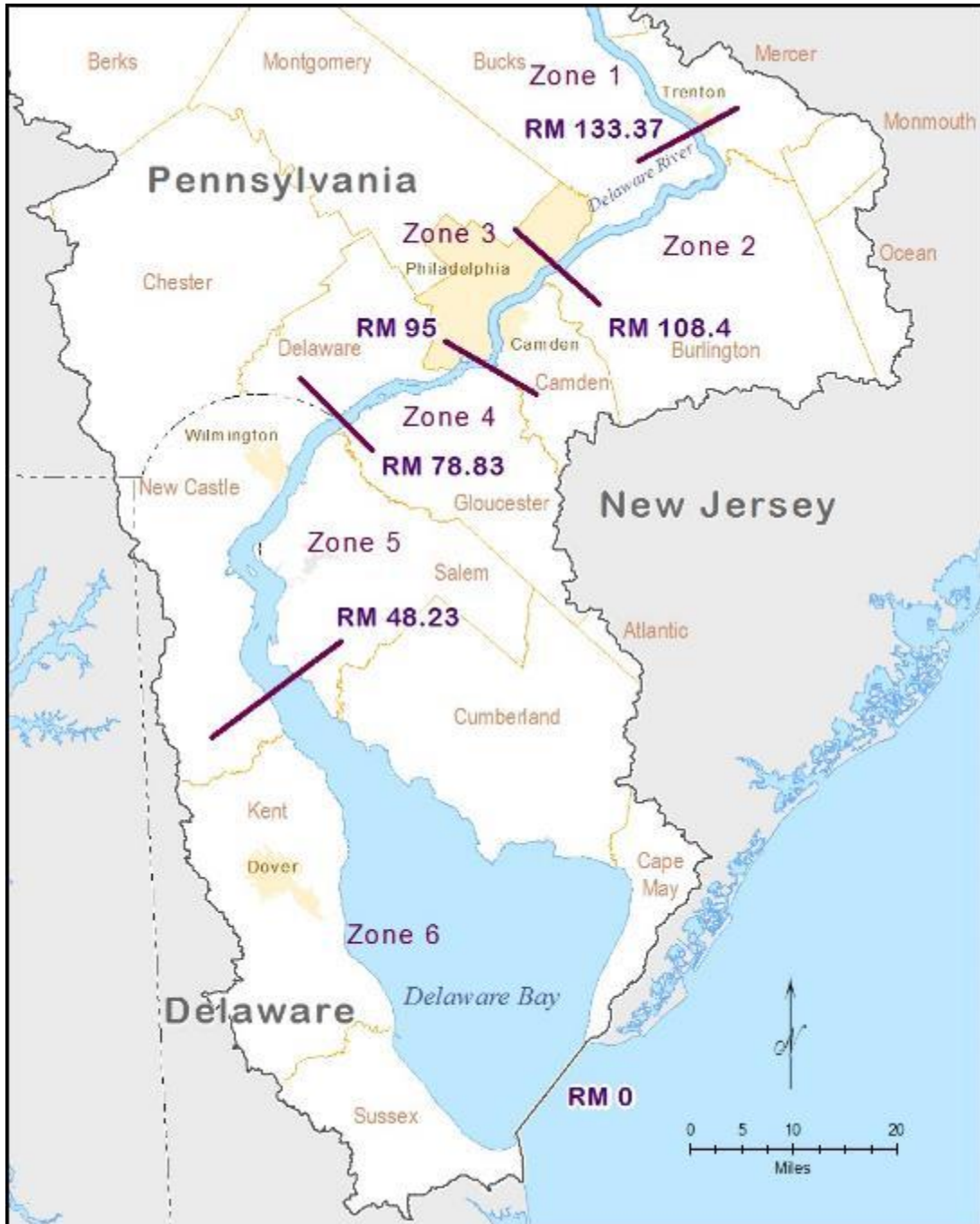
DRBC is leading this groundbreaking effort through a collaborative process informed by expert scientists and engineers, and in close consultation with its Water Quality Advisory Committee, a group representing state and federal co-regulators, NGO's, academic institutions, municipal and industrial dischargers, and water purveyors.

- ▶ Bacteria
- ▶ Chlorides
- ▶ Dissolved Oxygen
- ▶ Nutrients

www.drbc.gov

<https://www.state.nj.us/drbc/quality/conventional/designated-use.html>

Delaware River Estuary



River Miles:

RM 0.0 = Atlantic Ocean

RM 100 = Ben Franklin Bridge, Philadelphia / Camden

RM 133 = “Head of Tide”, Trenton, NJ

WQ Assessment Units:

Zone 1: Non-tidal (Upstream from Trenton)

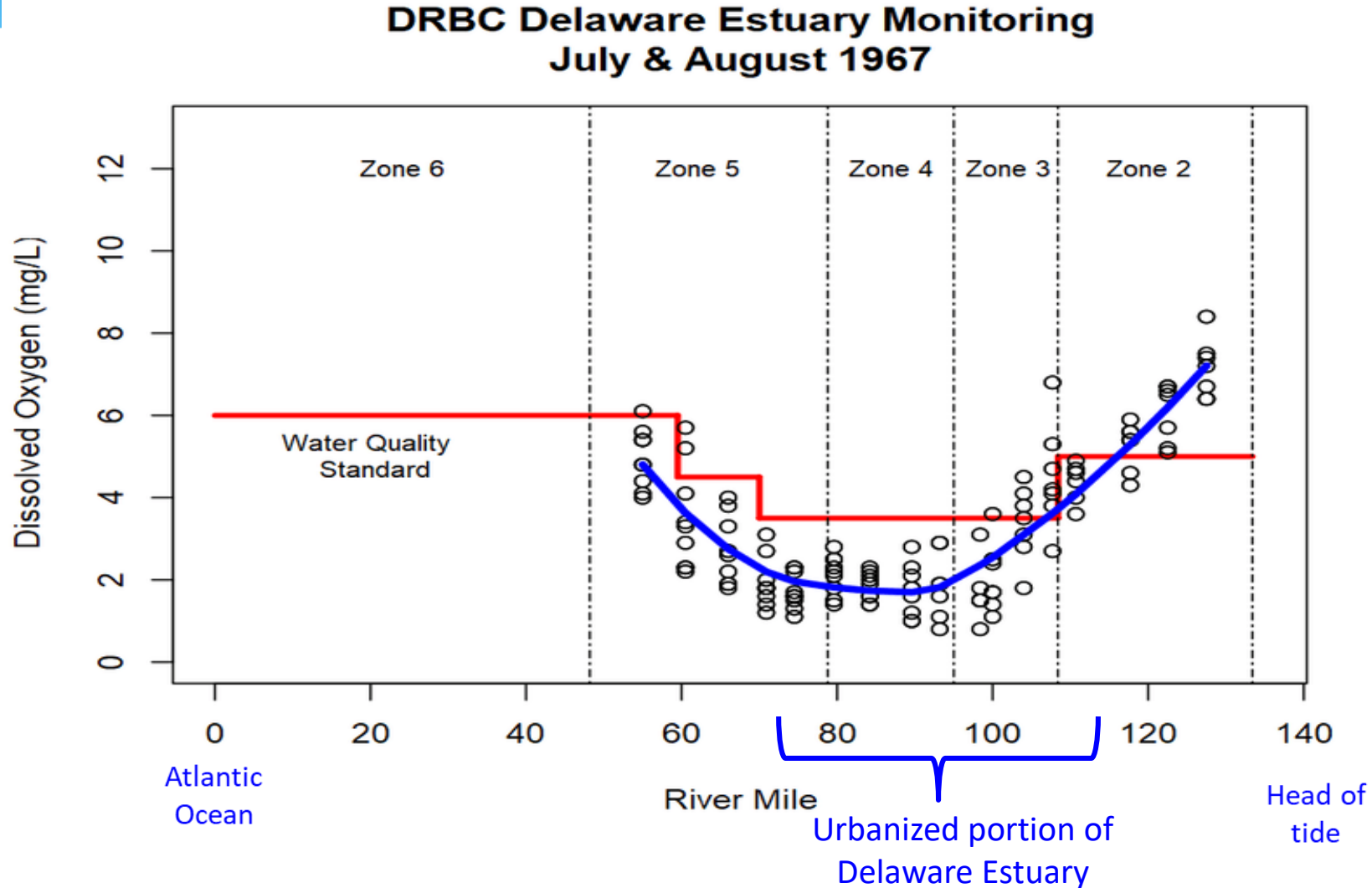
Zone 3: Philadelphia / Camden

Zone 6: Delaware Bay

Aquatic Life Designated Uses in Current DRBC Regulations since 1967

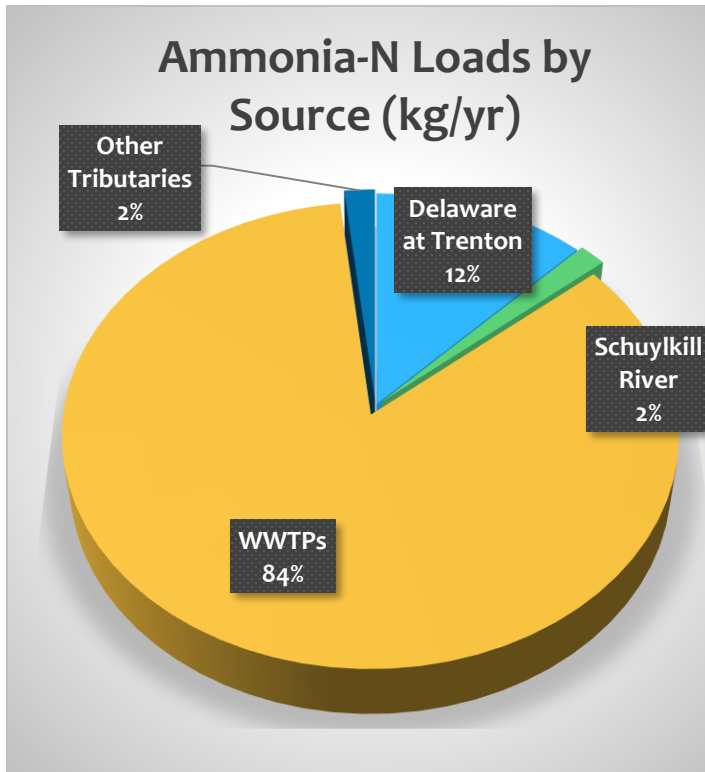
Zone	River Mile	Aquatic Life Use	Migratory Fishes	24-hour average D.O. Criteria	
	2	108.4 – 133.4	maintenance and propagation of resident fish and other aquatic life	passage of anadromous fish	5.0 mg/l
Urbanized portion of Delaware Estuary	3	95 – 108.4	maintenance of resident fish and other aquatic life	passage of anadromous fish	3.5 mg/l
	4	78.8 – 95	maintenance of resident fish and other aquatic life	passage of anadromous fish	3.5 mg/l
	5	70 – 78.8	maintenance of resident fish and other aquatic life	passage of anadromous fish	3.5 mg/l
		48.2 – 70	maintenance and propagation of resident fish and other aquatic life	passage of anadromous fish	4.5 – 6.0 mg/l
The Delaware Bay	6	0 – 48.2	maintenance and propagation of resident fish and other aquatic life	passage of anadromous fish	6.0 mg/l
			maintenance and propagation of shellfish		

Delaware Estuary DO "Sag"

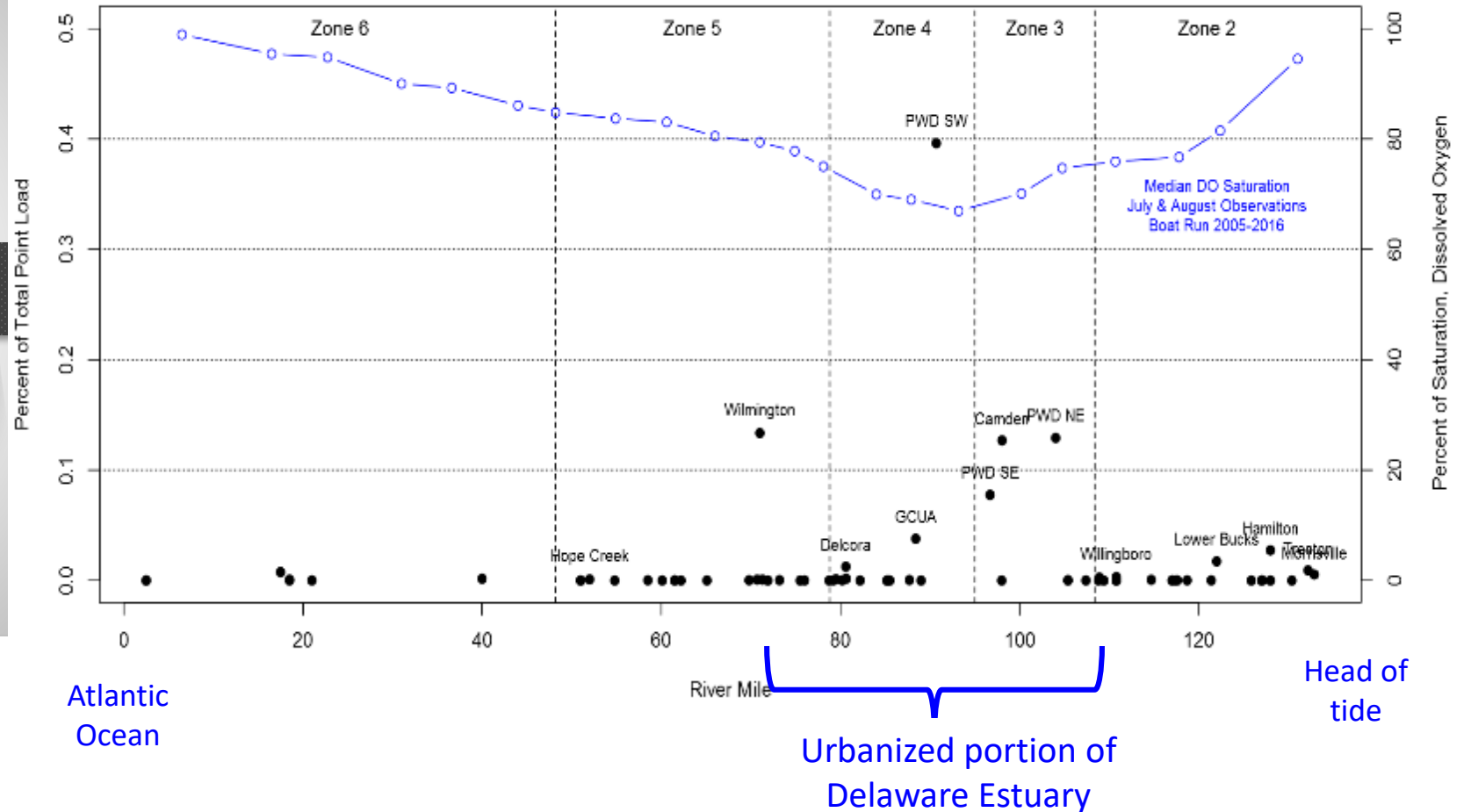


The Dissolved Oxygen "sag" in the Estuary is primary influenced by point source discharges

Ammonia-Nitrogen



Relative Point Discharge Load by Delaware Estuary River Mile
NH3 - Ammonia, whole water Loading



A "Dead" River Zone Restored

Dissolved Oxygen (DO)

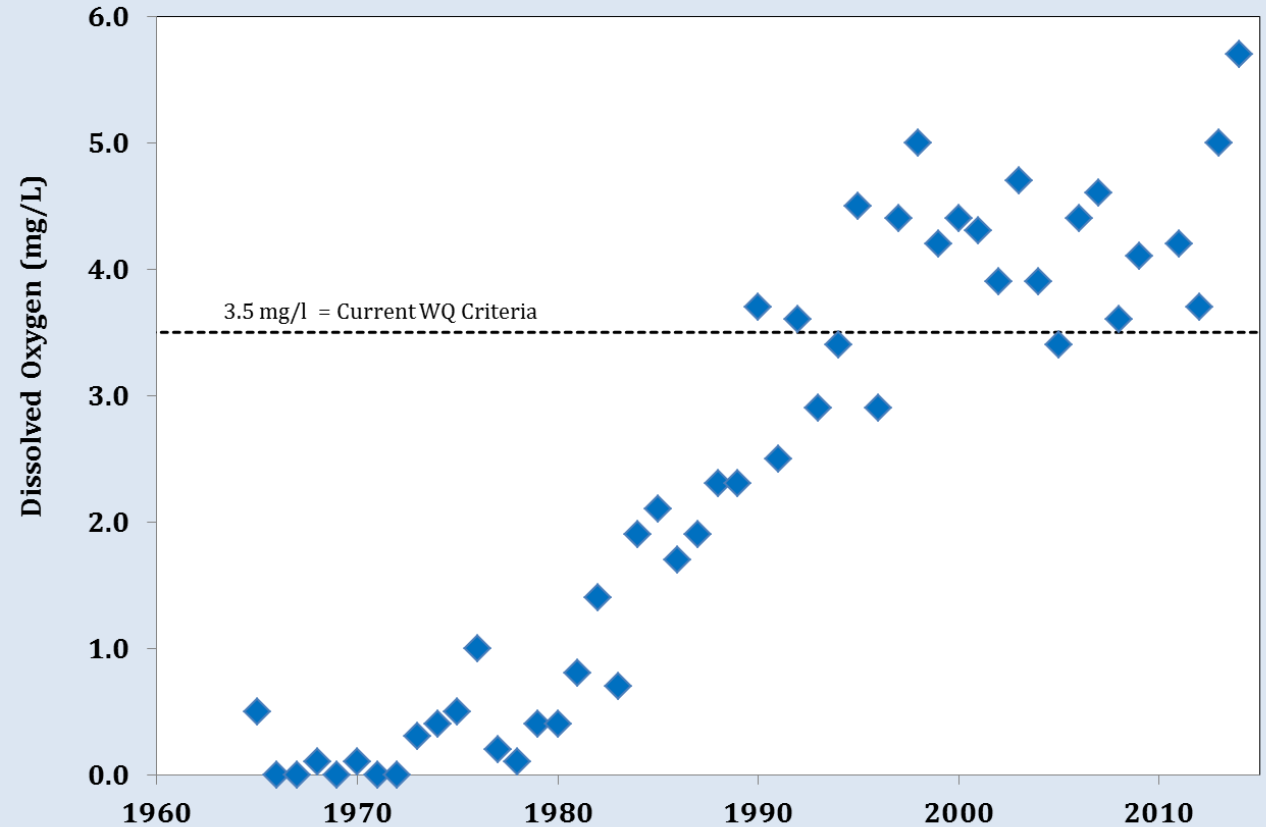
- 30 mile "Dead Zone"
- Particularly bad in Summer
- Anadromous fish migration stopped



Images: NOAA
fisheries.noaa.gov



Delaware River Dissolved Oxygen
@ River Mile 100/ Ben Franklin Bridge
Minimum of all July Averages



Evaluation of Existing Aquatic Life Use

- ❑ Some **strong** evidence for successful reproduction for:
 - White Perch (Zones 3 & 4), Striped Bass (Zone 5)
- ❑ Some **moderate** evidence for successful reproduction for:
 - American Shad (Zone 3), Alewife (Zones 3 & 4), Bay Anchovy (Zones 4 & 5)
- ❑ Evidence for **weak** reproductive success in each Zone:
 - Atlantic Sturgeon (Zone 4), American Shad (Zone 4), Blueback Herring (Zones 3 & 4)

Existing Use Evaluation for Zones 3, 4, & 5 of the Delaware Estuary Based on Spawning and Rearing of Resident and Anadromous Fishes

September 30, 2015



https://www.nj.gov/drbc/library/documents/ExistingUseRpt_zones3-5_sept2015.pdf

- ✓ **Update to DRBC Water Quality Regulations needs to be considered**



Science Based Approach

Review DO requirements for key sensitive species in the Estuary.



Enhanced Estuary monitoring.



Develop a linked hydrodynamic and water quality model for the Estuary.



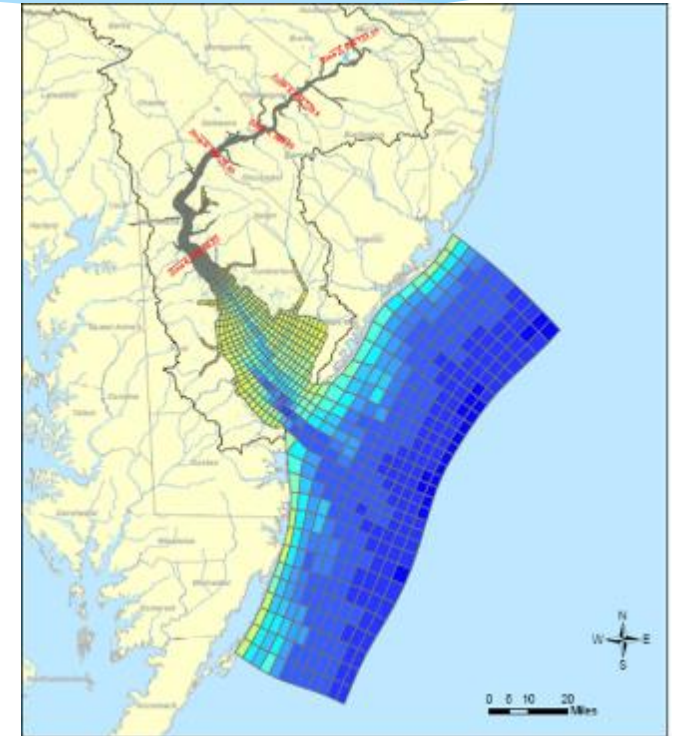
Determine higher level of DO to protect the designated use.



Develop waste load allocations to achieve new DO criteria.



Review treatment costs, cost impacts and attainability.





Stakeholder and Expert Input

Water Quality Advisory Committee

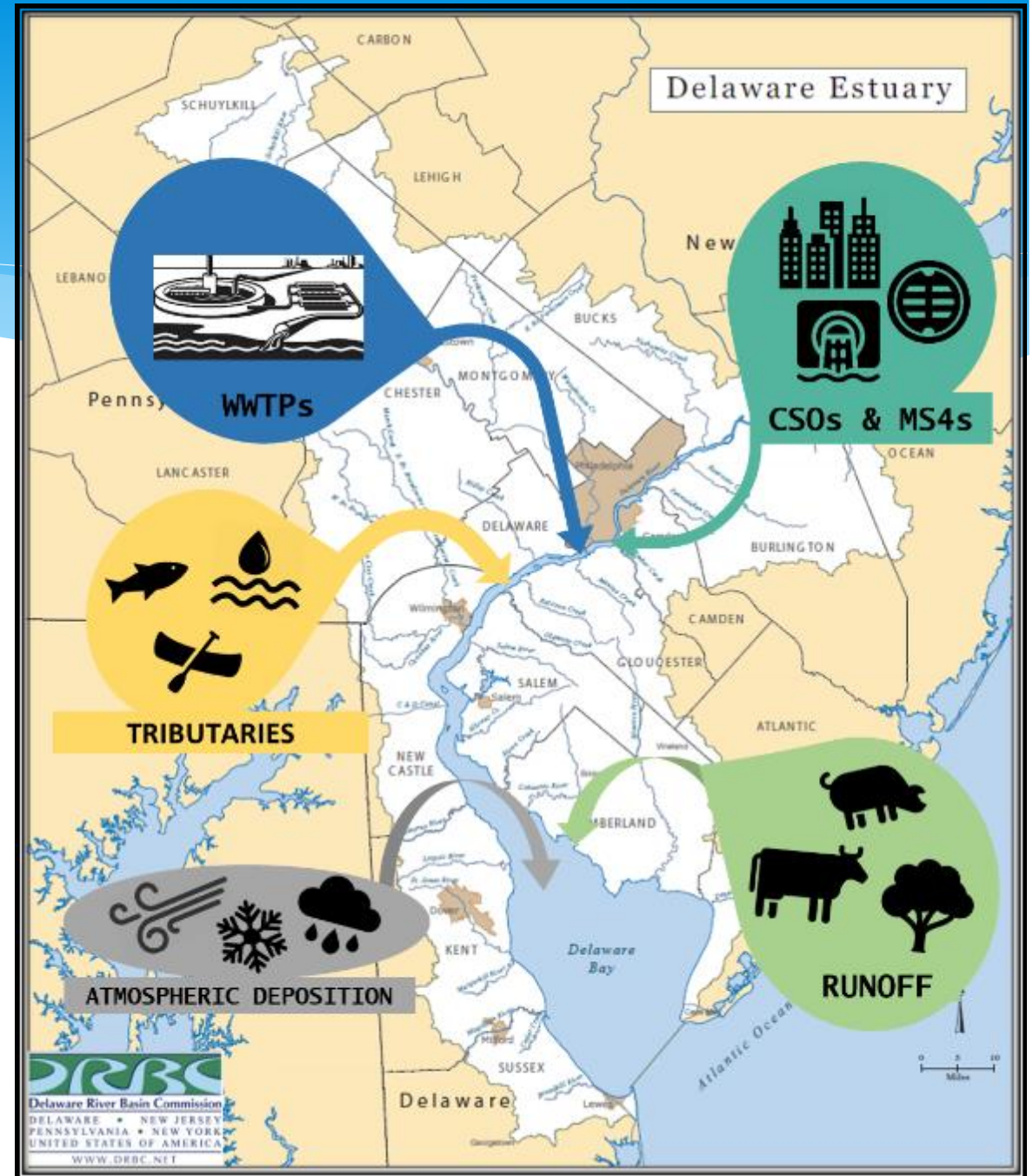
Academia / Science	Stroud Water Research Center
Delaware	DNREC
Environmental Group	Delaware Riverkeeper Network
Watershed Organization	Wildlands Conservancy
National Parks Programs	National Park Service
New Jersey	NJDEP
New York	NYDEC
Pennsylvania	PADEP
Industry	Chemours and Exelon
Municipal	Philadelphia Water and City of Wilmington
US EPA	US EPA

Expert Panel for Estuary Model Development

U.S. Army Corps of Engineers	Dr. Carl Cerco (Retired)
Rutgers University	Dr. Bob Chant
Tufts University	Dr. Steve Chapra
U.S. EPA Region 4	Tim Wool
LimnoTech	Dr. Vic Bierman

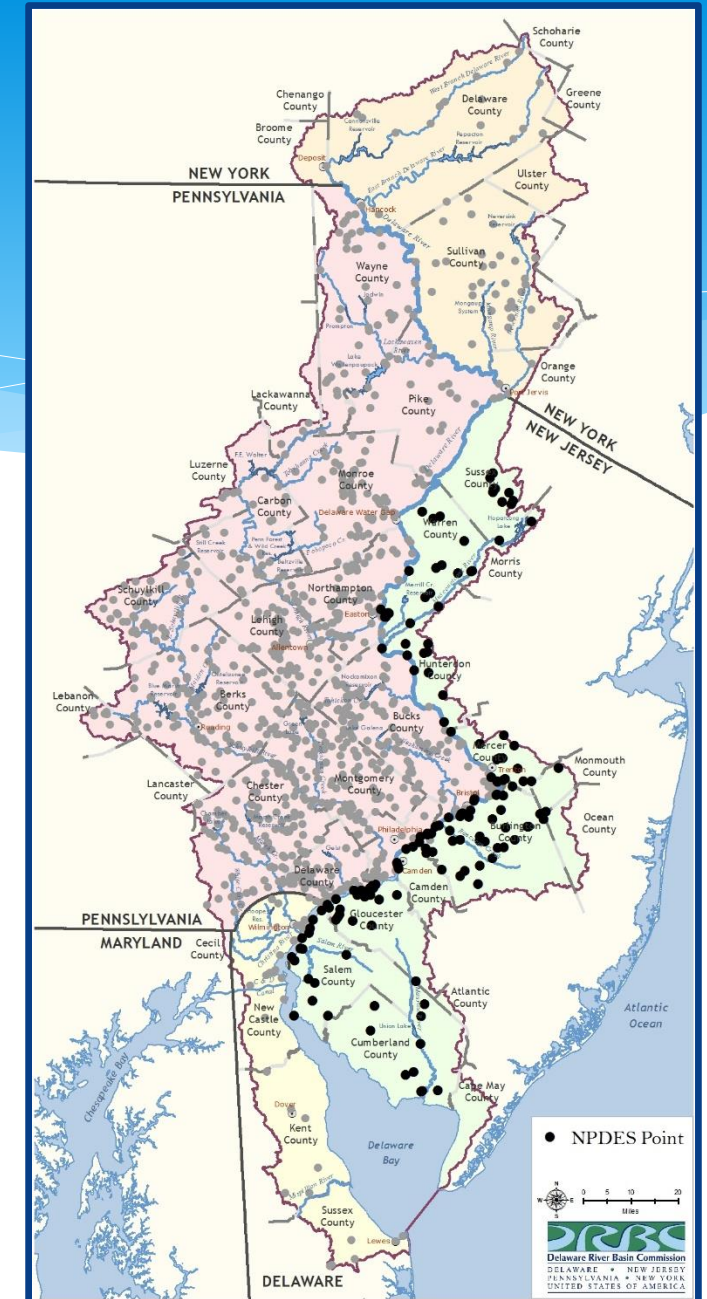
Development of linked hydrodynamic and water quality model

- * Tributary Loads
 - * Delaware River at Trenton (Zone 1)
 - * Schuylkill River
 - * ~ 29 other tributaries
- * Tidal Boundaries
 - * Ocean at mouth of Delaware Bay
 - * C&D Canal
- * Direct Basin Loads
 - * Wasteloads: **WWTPs**, CSOs, MS4
 - * Nonpoint Source (runoff outside MS4)
 - * Wet/Dry deposition onto water surface



One Process / One Permit

- DRBC Compact and Rules allow for and encourage the use of administrative agreements with states and state agencies to:
 - ✓ Promote inter-agency collaboration and cooperation on shared mission objectives.
 - ✓ Promote regulatory program efficiencies.
 - ✓ Avoid unnecessary duplication of effort.
- Recognizes the Authority, standards, rules of each agency

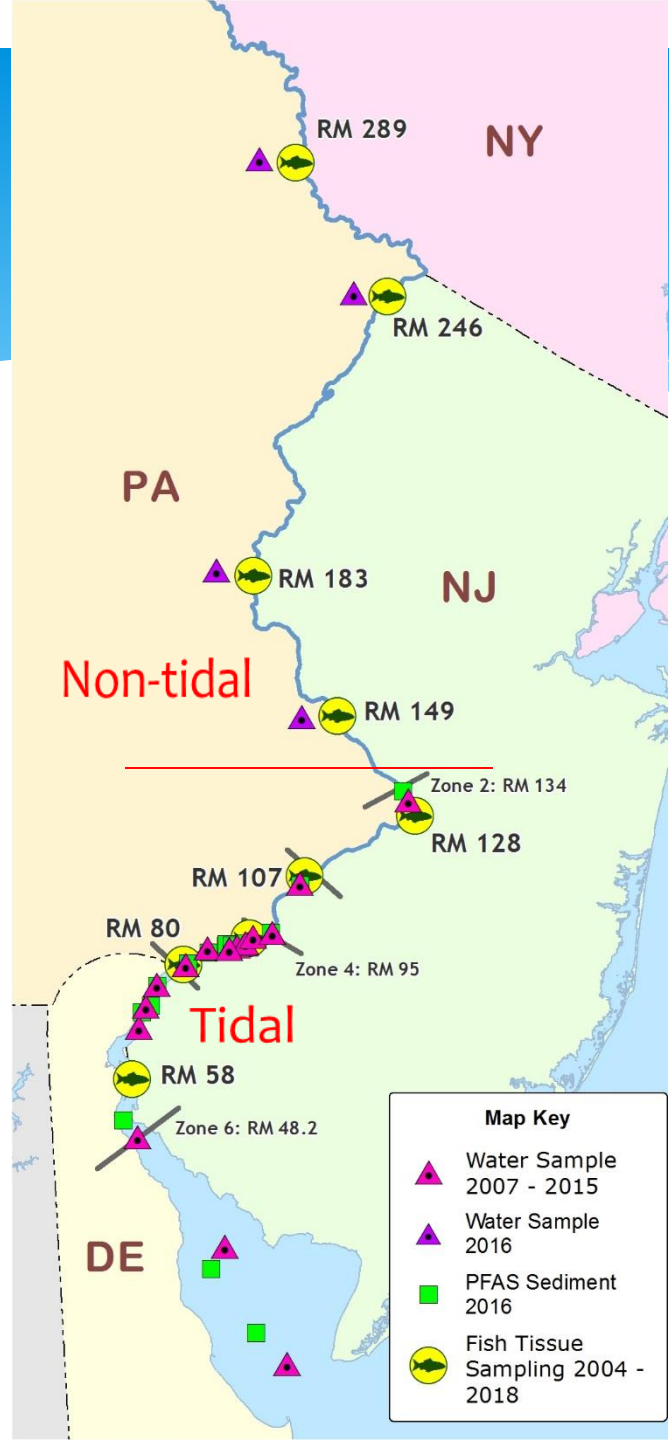




DRBC Water Resource Management Programs

Planning	Operations	Regulation	Science
Sustainable Water Availability	Flow / reservoir management	Water withdrawals	Water quality Assessments
Future water use	Drought management	Wastewater discharges	Water quality Monitoring
Consumptive water use	Salinity control	Special protection waters	Emerging contaminants
Water efficiency	Decree parties	Groundwater special protection	Toxic pollutants
Water audits	Hydrologic models	Water quality standards - Interstate Waters	Fish consumption
Climate Change	Water charges	Flood protection	Reduction of legacy pollutants - PCBs

PFAS Sample Sites Main Stem Delaware River



Surface water:

- Six tidal sites in 2007, 2008, 2009
- Fifteen tidal sites in 2015
- Four non-tidal sites in 2016

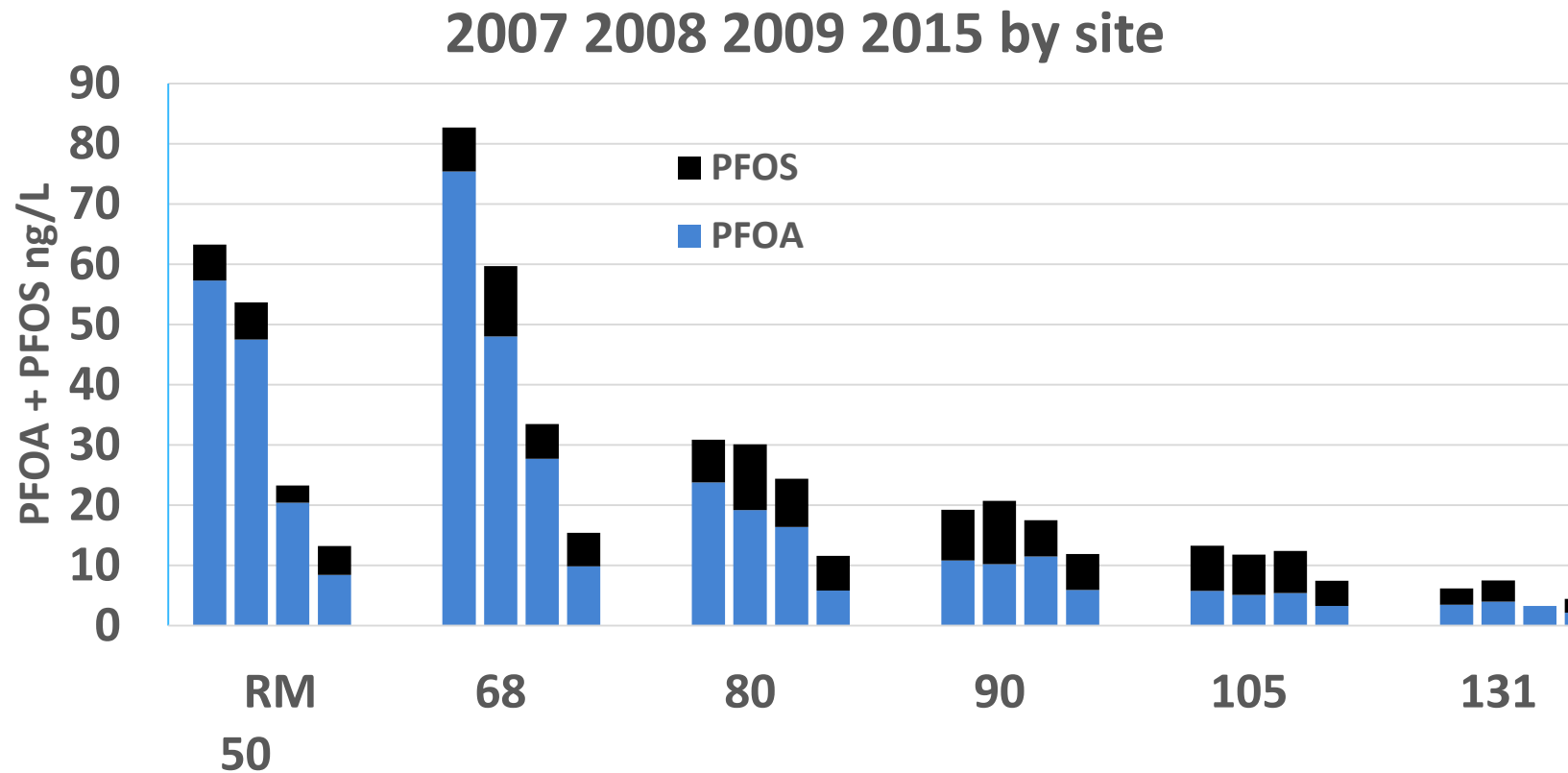
Fish:

- Four non-tidal and five tidal sites in 2004, 2005, 2006, 2007, 2010, 2012, 2015 and 2018

Sediment:

- Fifteen tidal sites in 2016

Surface Water Estuary (tidal) PFAS





Delaware River Basin Commission

Managing our shared Basin water resources.

Built on a shared and foundational commitment in the ***Delaware River Basin Compact*** to:

- Manage complex interstate water resource systems and needs.
- Collaborate with members on shared waters management issues – from headwaters to the Ocean.
- Adapt to achieve mission results.
- Balance progress and protection.
- Partner to achieve for the Basin, what individual⁴¹ members cannot achieve alone.





Shad making a big comeback in Delaware River

https://www.pressofatlanticcity.com/news/shad-make-a-big-comeback-in-delaware-river/article_bd20f7b6-9888-54ec-8930-8c476eec7013.html

There's good news for one of N.J.'s most endangered fish

https://www.nj.com/news/2017/10/atlantic_sturgeon_still_depleted_but_slowly_recove.html

Updated Oct 28, 2017; Posted Oct 28, 2017

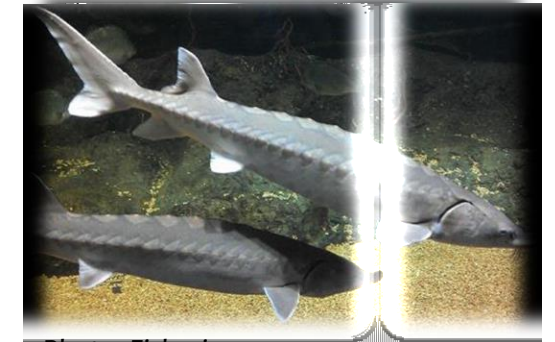


Photo: Fisheries.noaa.gov

NEW JERSEY, DELAWARE EASE ADVISORIES ON CERTAIN FISH

TOM JOHNSON | FEBRUARY 21, 2018

<https://www.njspotlight.com/stories/18/02/20/new-jersey-delaware-ease-advisories-on-certain-fish/>



Mapping the Delaware River Waterfront's building boom

Big changes are coming to the waterfront

By **Melissa Romero** and **Anna Merriman** | Updated Sep 26, 2018, 5:30pm EDT

<https://philly.curbed.com/maps/delaware-river-philadelphia-development-projects>

Steve Tambini, Executive Director

Steve.Tambini@drbc.gov

www.drbc.gov



Delaware River Basin Commission

DELAWARE • NEW JERSEY
PENNSYLVANIA • NEW YORK
UNITED STATES OF AMERICA

***Managing, Protecting and
Improving the Basin's Water
Resources since 1961***