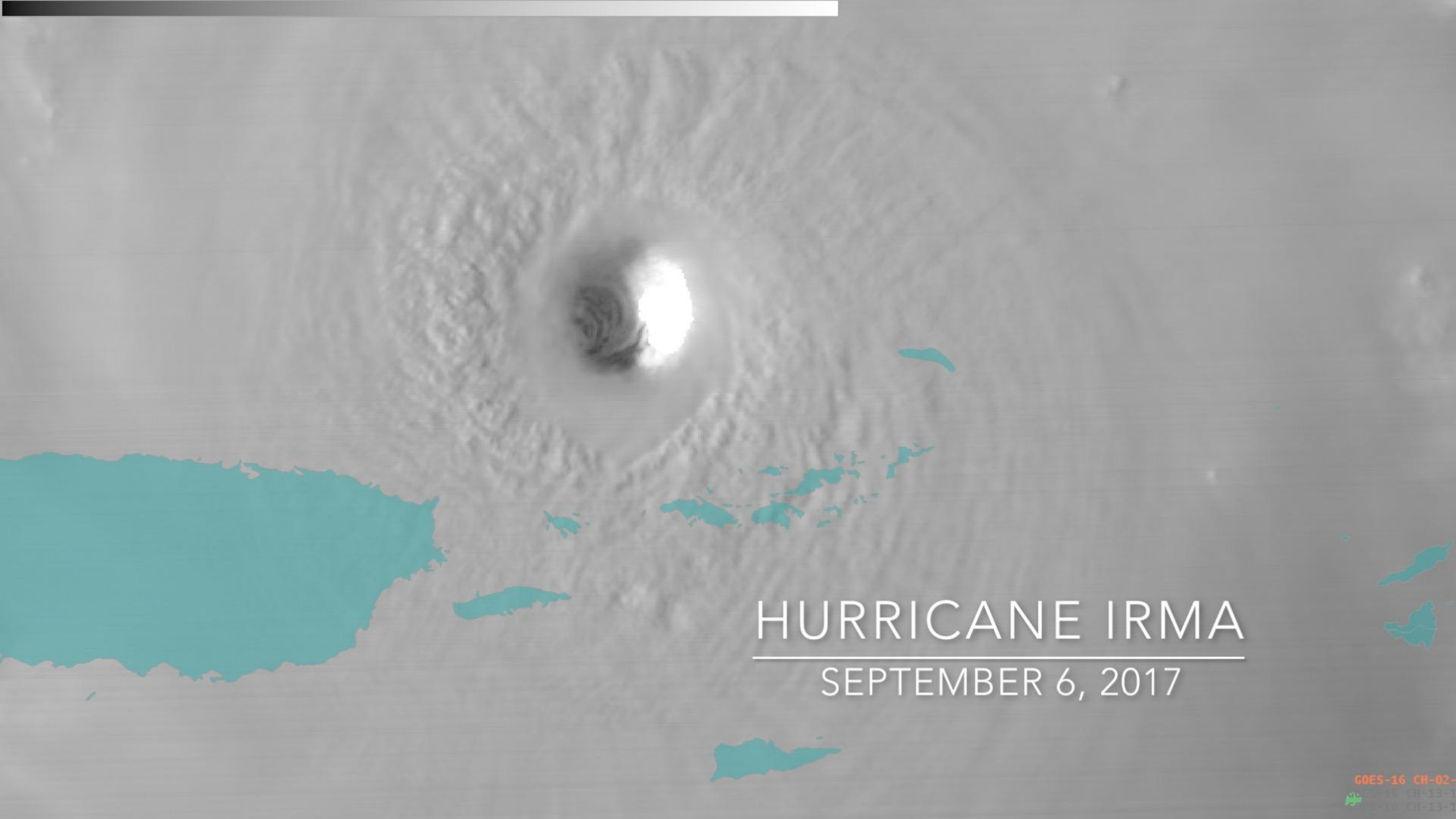


---

# HURACAN MARIA Y PUERTO RICO QUE PASO? COMO ESTAMOS?

FORMACION/DESARROLLO



# HURRICANE IRMA

---

SEPTEMBER 6, 2017





# Two-Day Graphical Tropical Weather Outlook

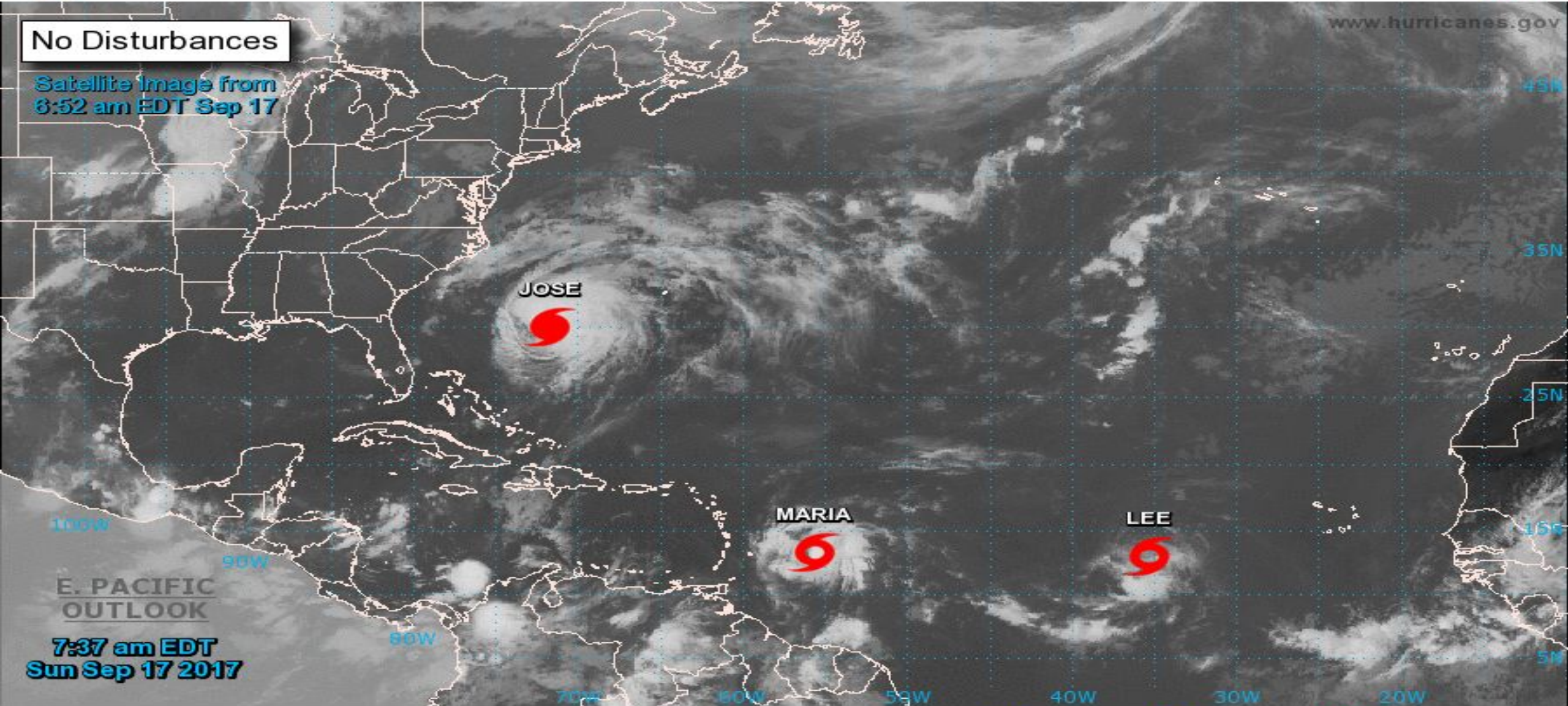
National Hurricane Center Miami, Florida



www.hurricanes.gov

No Disturbances

Satellite Image from  
6:52 am EDT Sep 17



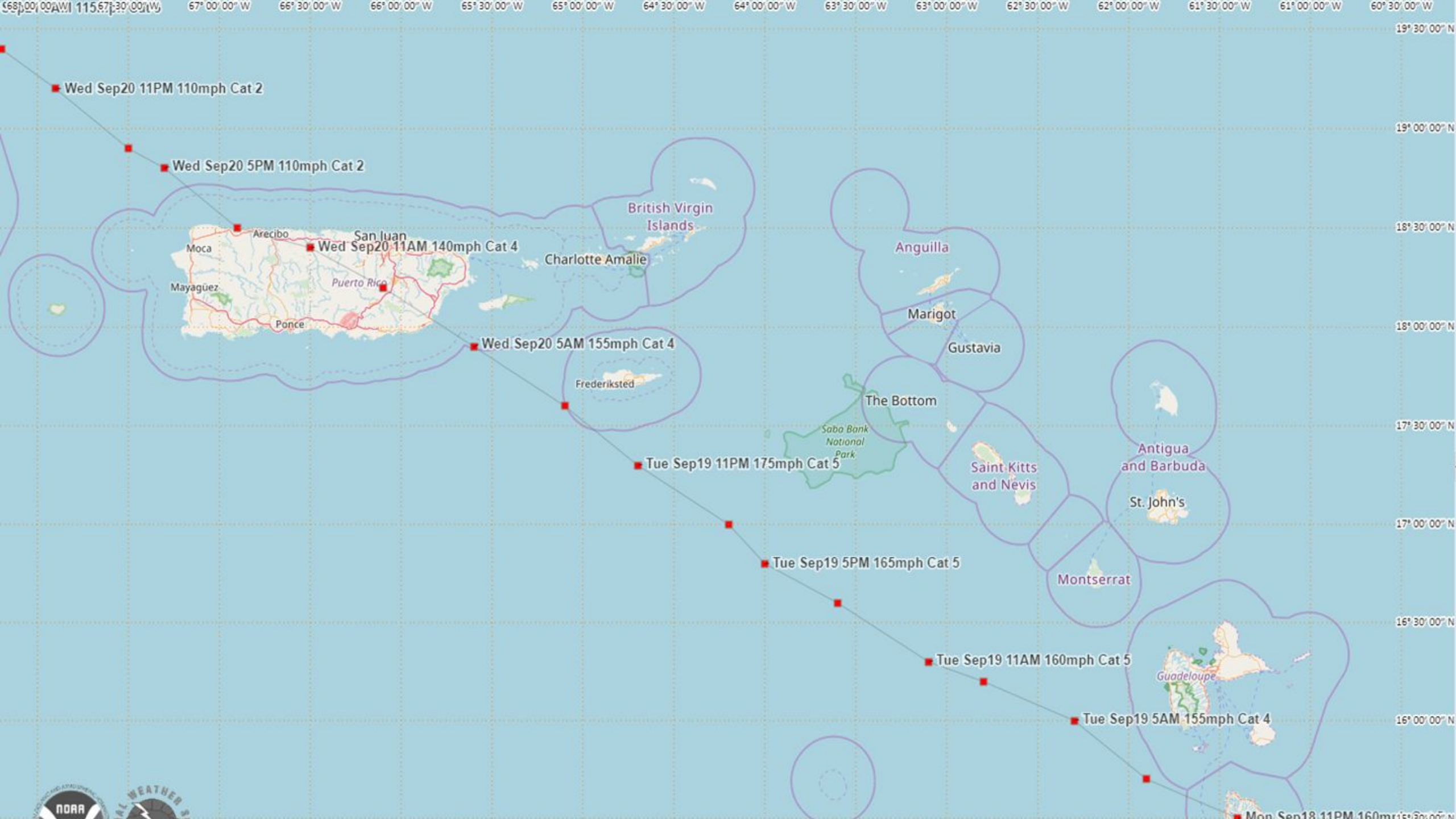
7:37 am EDT  
Sun Sep 17 2017

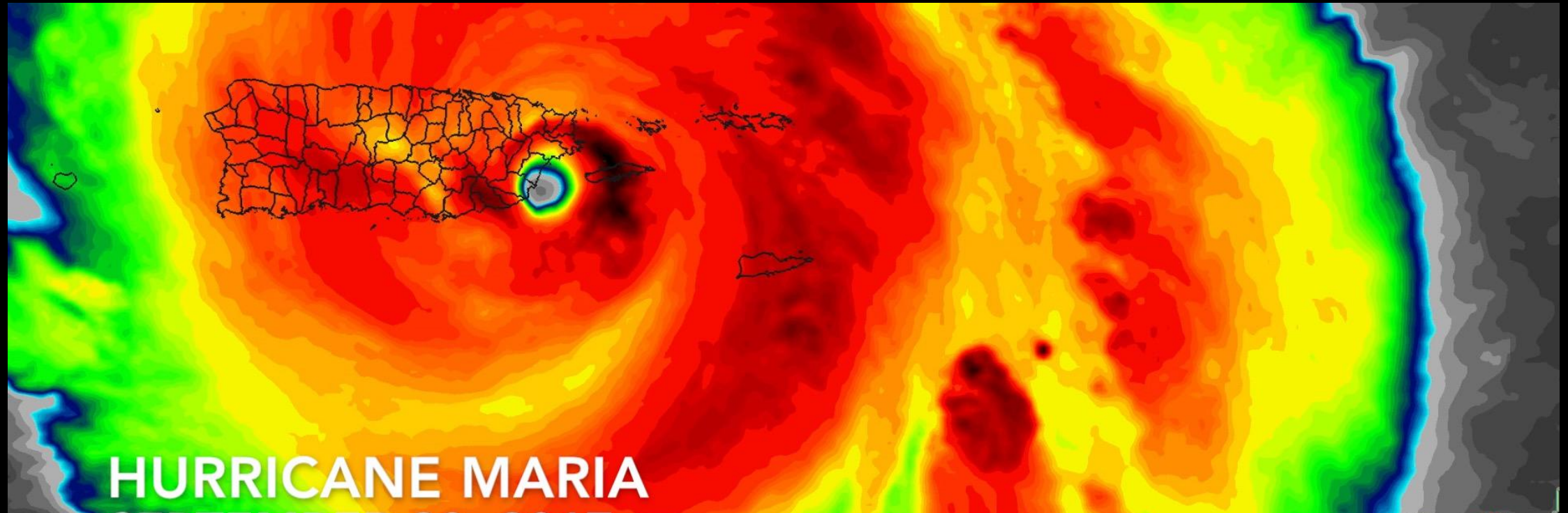
Current Disturbances and Two-Day Cyclone Formation Chance: < 40% 40-60% > 60%

Tropical or Sub-Tropical Cyclone: Depression Storm Hurricane

Post-Tropical Cyclone Remnants







---

# HURACAN MARIA Y PUERTO RICO QUE PASO? COMO ESTAMOS?

OBSERVACIONES

# Maximum Wind Gust (MPH) measured during Hurricane Maria

Most of the stations failed during the hurricane





# Maximum Storm Surge (feet above MSL) during Hurricane Maria

Data: NOAA National Ocean Service





# Hurricane María Estimated Rainfall

## National Weather Service WFO San Juan

Data Source: USGS, COOP, RAWS

48-hr Total Sept. 19 to Sept. 21, 2017

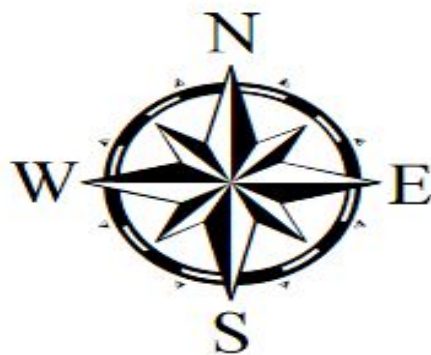
Data is Preliminary



\*Many of our stations were not able to report due to the damages sustained by Hurricane María.



### Rainfall (inches)



### Saint Thomas / Saint John



### Saint Croix

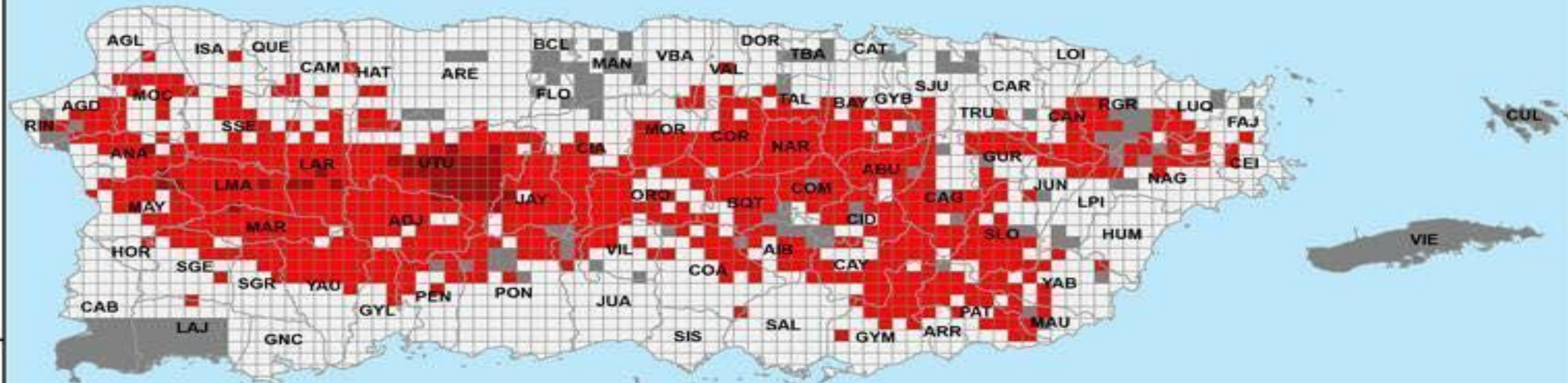




| Station   | Flood Stage | Stage Height | Rank |
|---|-------------|--------------|------|
| RIO CIBUCO AT VEGA BAJA, PR                       | 15          | 19.98        | 1    |
| RIO GRANDE DE ARECIBO NR SAN PEDRO, PR            | 11          | 21.96        | 1    |
| RIO CULEBRINAS AT MARGARITA DAMSITE NR AGUADA, PR | 15          | 21.99        | 1    |
| RIO GURABO BLW EL MANGO, PR                       | 18          | 23.78        | 1    |
| RIO DE LA PLATA AT COMERIO, PR                    | 11          | 34.86        | 1    |
| RIO DE LA PLATA BLW LA PLATA DAMSITE, PR          | 16          | 44.63        | 1    |
| RIO PORTUGUES NR TIBES, PR                        | 14          | 14.04        | 2    |
| RIO ROSARIO NR HORMIGUEROS, PR                    | 10          | 19.50        | 2    |
| RIO GRANDE DE ARECIBO BLW UTUADO, PR              | 14          | 24.54        | 2    |
| RIO GUANAJIBO NR HORMIGUEROS, PR                  | 20          | 28.50        | 2    |
| RIO DE LA PLATA AT HWY 2 NR TOA ALTA, PR          | 16          | 28.56        | 2    |
| RIO GRANDE DE MANATI NR MOROVIS, PR               | 10          | 18.55        | 3    |
| RIO COAMO AT HWY 14 AT COAMO, PR                  | 10          | 20.34        | 3    |
| RIO GRANDE DE MANATI AT CIALES, PR                | 10          | 28.33        | 3    |
| RIO GRANDE DE ANASCO NR SAN SEBASTIAN, PR         | 11          | 31.36        | 3    |
| RIO CERRILLOS ABV LAGO CERRILLOS NR PONCE, PR     | 6           | 11.77        | 4    |
| RIO CULEBRINAS AT HWY 404 NR MOCA, PR             | 24          | 33.18        | 4    |

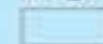


# Map showing concentration of landslides caused by Hurricane Maria, Puerto Rico



## Explanation

### Legal Municipalities



### Landslide Density

- Not Examined
- No Landslides
- Less than 25 per SqKm
- More than 25 per SqKm

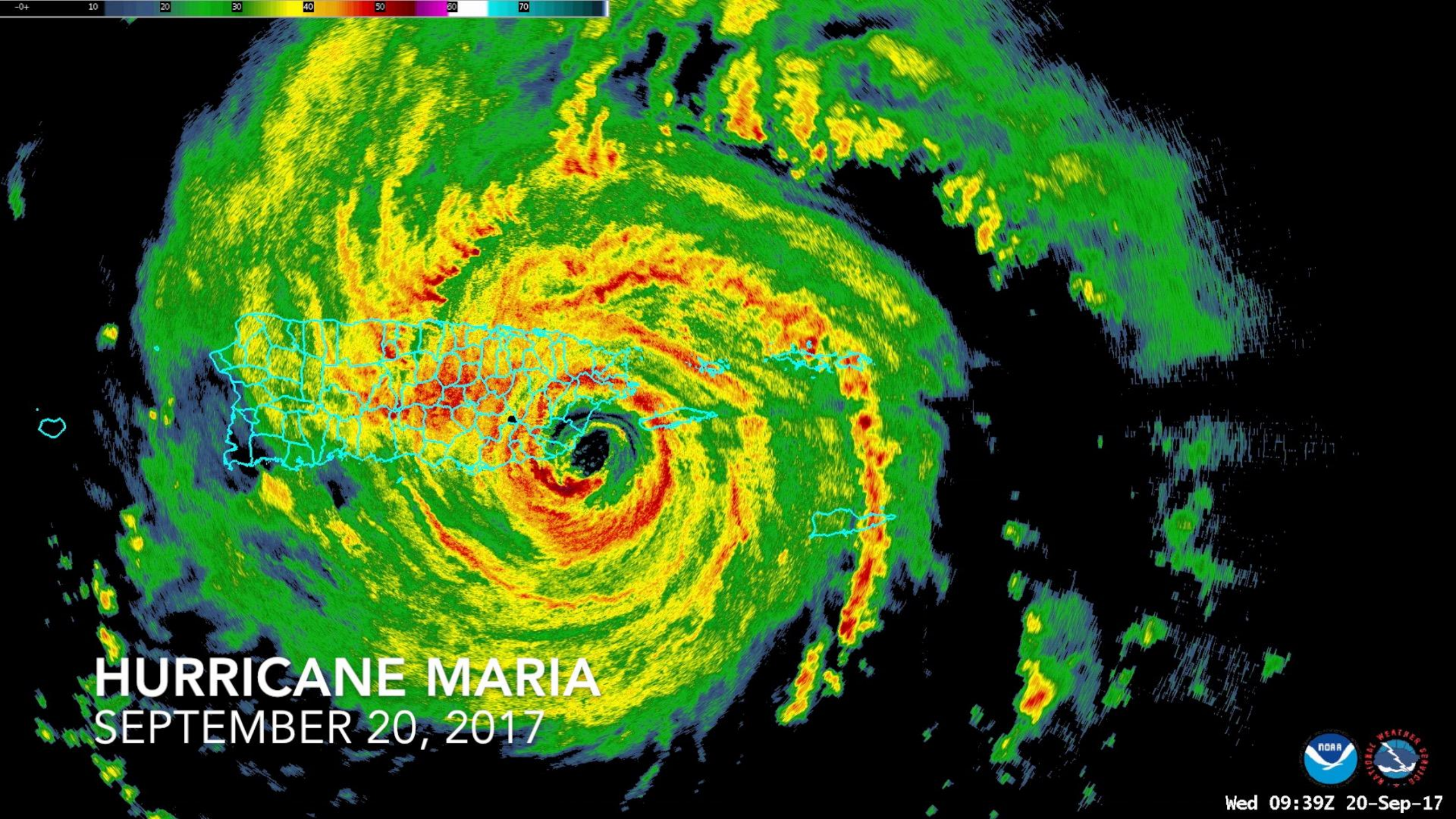
0 5 10 20 Miles

0 5 10 20 Kilometers

Date: 10/23/2017

Source - Bessette-Kirton, E.K., Coe, J.A., Godt, J.W., Kean, J.W., Rengers, F.K., Schulz, W.H., Baum, R.L., Jones, E.S., and Staley, D.M., 2017. Map data showing concentration of landslides caused by Hurricane Maria in Puerto Rico: U.S. Geological Survey data release, <https://doi.org/10.5066/F7JD4VRF>



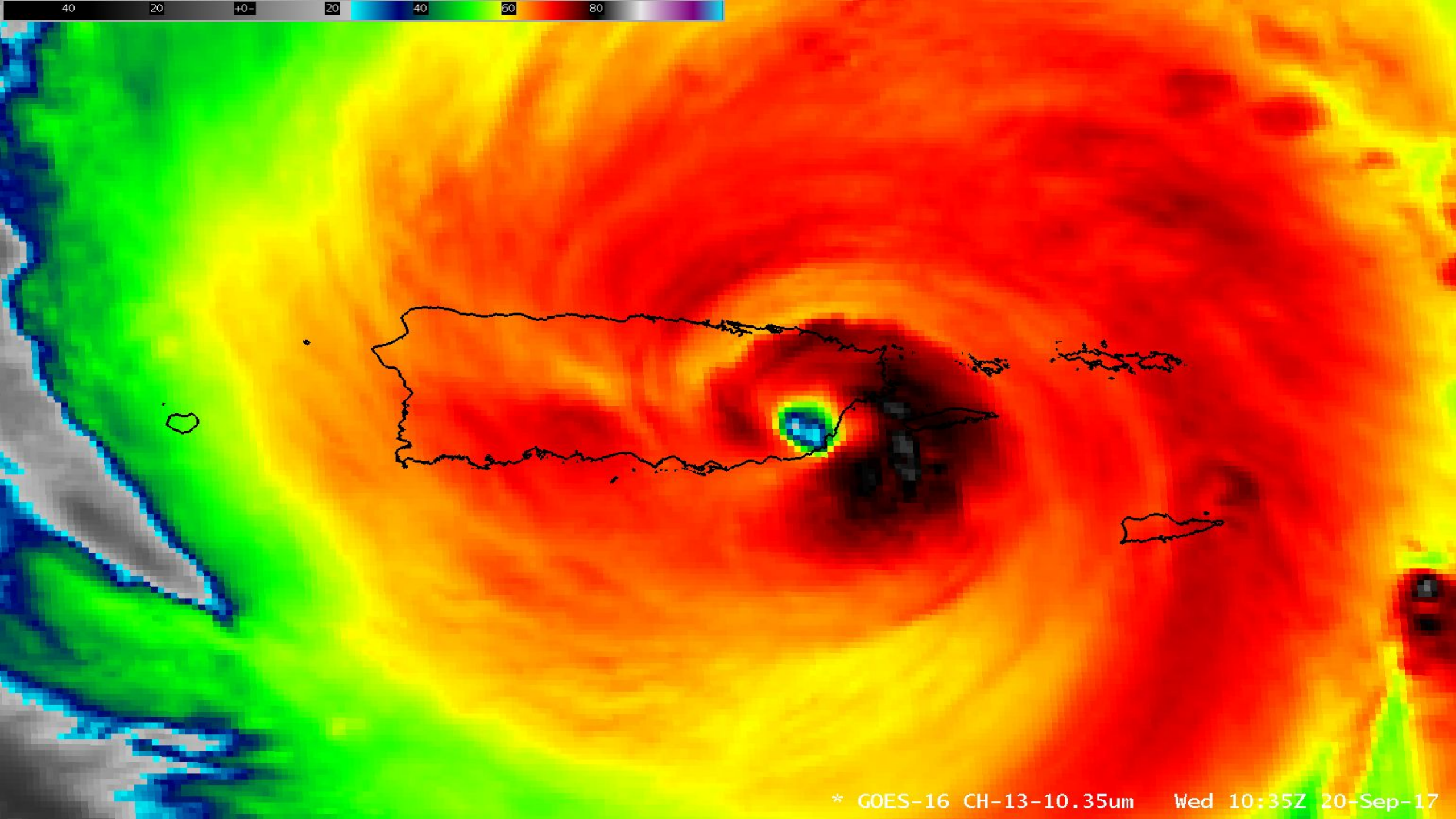


# HURRICANE MARIA

SEPTEMBER 20, 2017









68°W

66°W

64°W

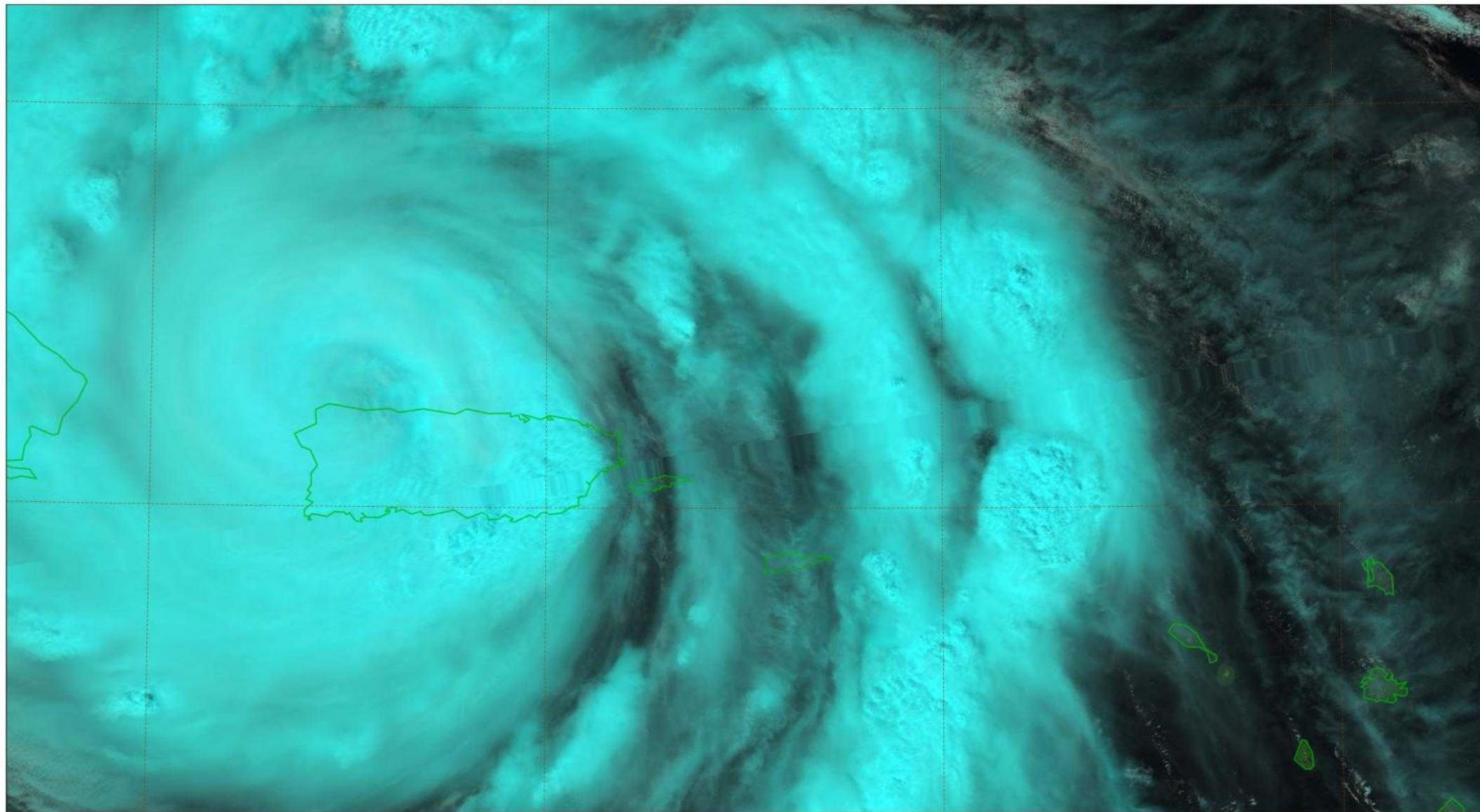
62°W

20°N

20°N

18°N

18°N

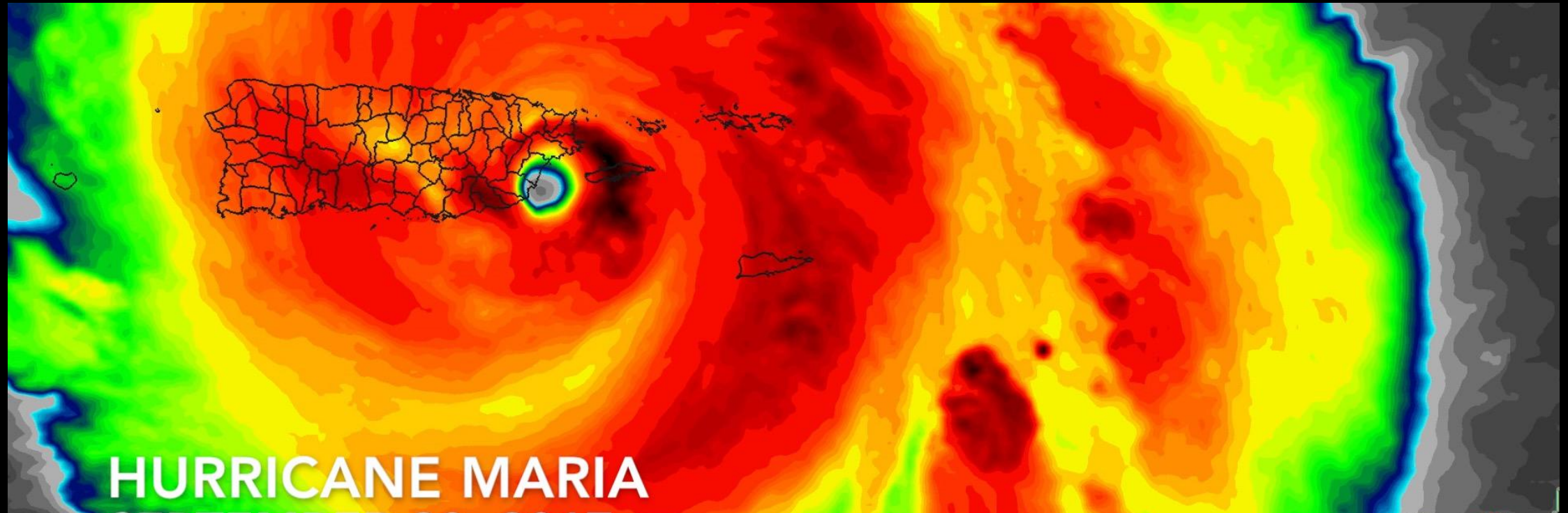


68°W

66°W

64°W

62°W



---

# HURACAN MARIA Y PUERTO RICO QUE PASO? COMO ESTAMOS?

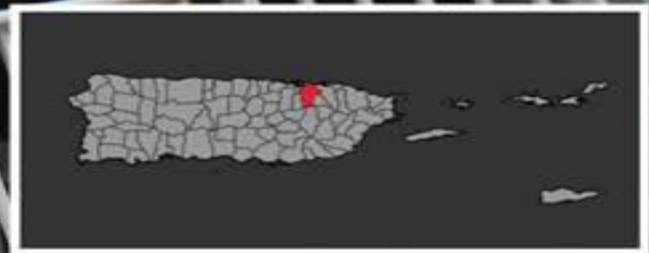
IMPACTOS; VIENTOS







**Muñoz Rivera Ave.  
San Juan, PR**





**Cidra, PR**







**Aibonito, PR**







**Barranquitas, PR**





**Jesus T. Piñero Ave.  
San Juan, PR**







**Cidra, PR**







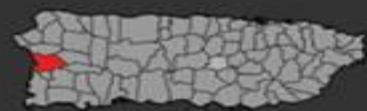
**Égida de la Asociación de La Policía de Maunabo  
Maunabo, PR**







**Mayaguez, PR**



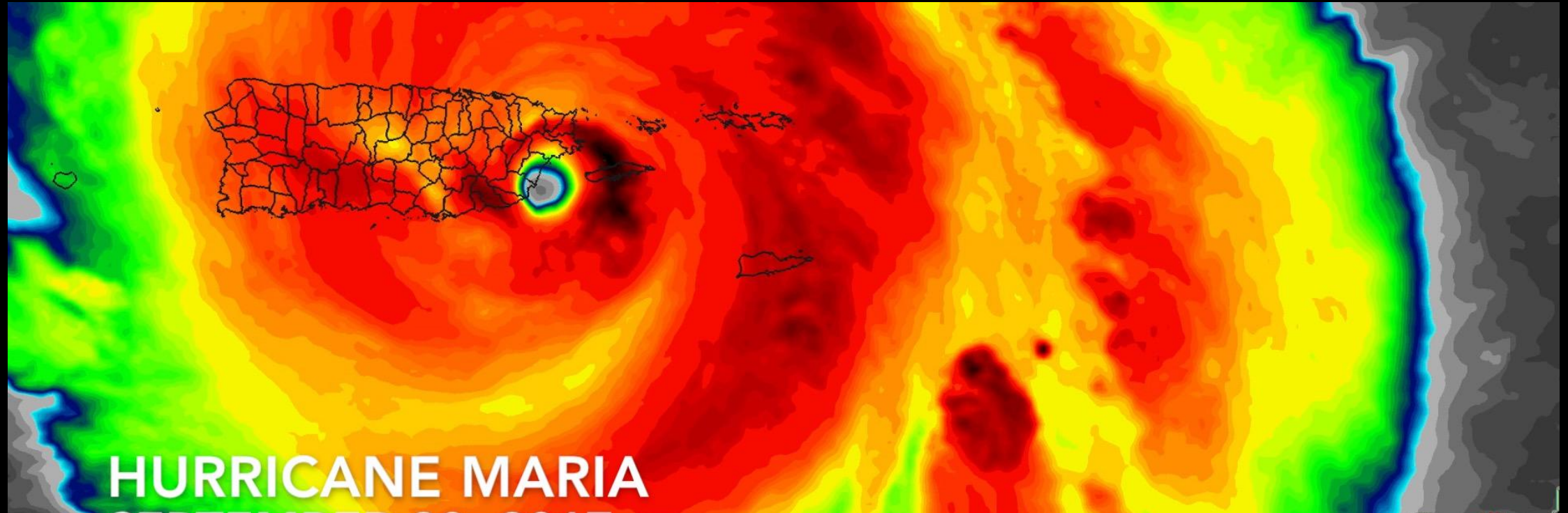




**San Juan, PR**







---

# HURACAN MARIA Y PUERTO RICO QUE PASO? COMO ESTAMOS?

IMPACTOS; LLUVIA





**Hwy. #26  
San Juan, PR**



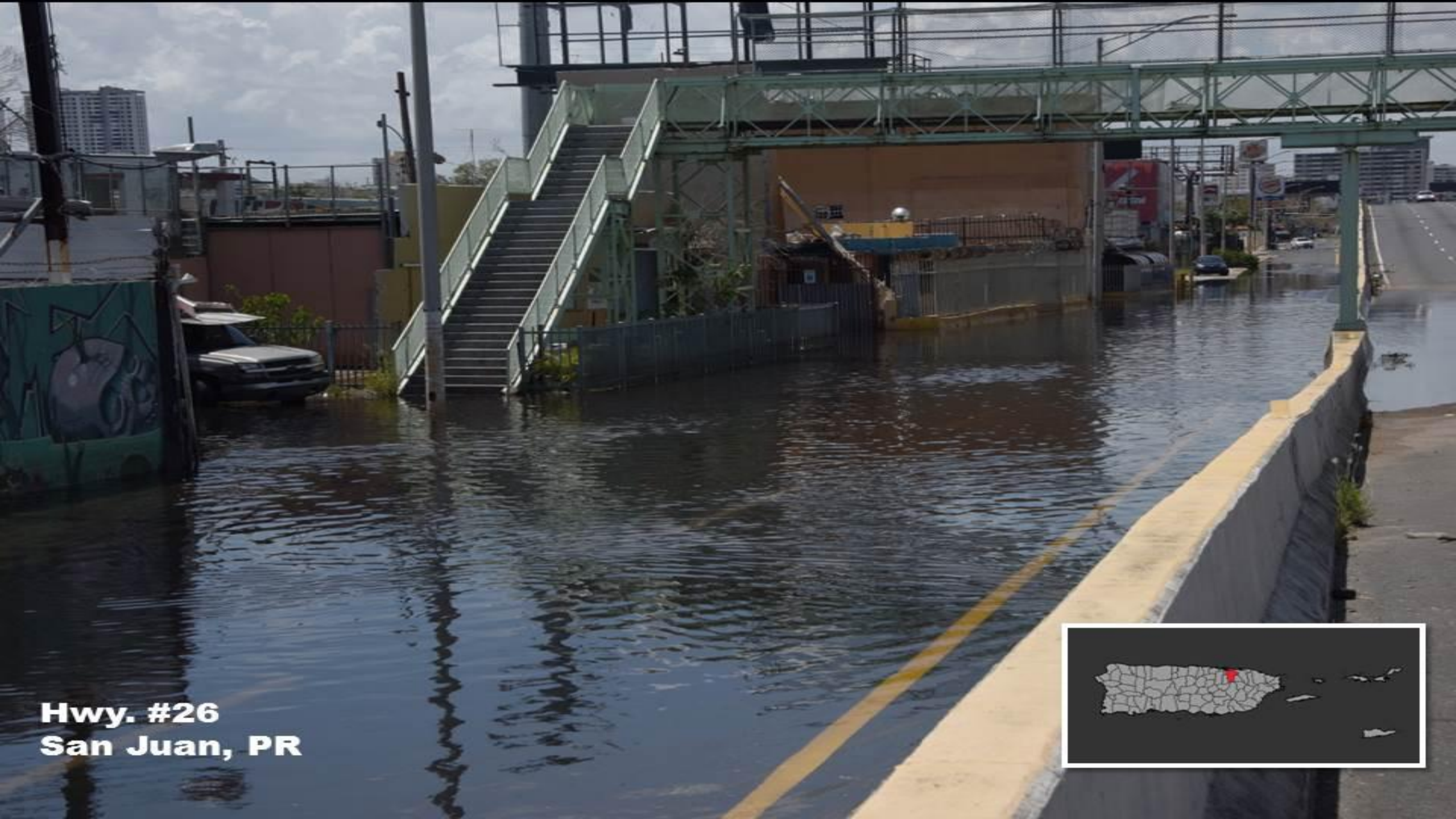




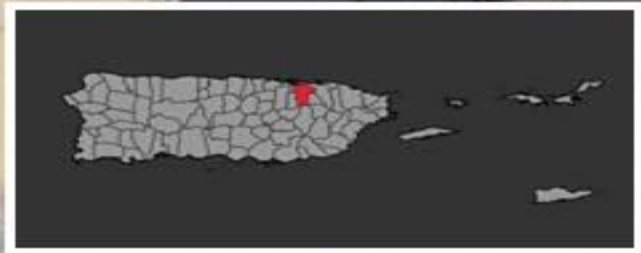
**McCleary Street  
San Juan, PR**







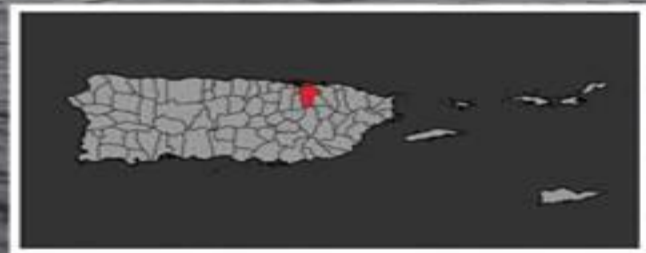
**Hwy. #26**  
**San Juan, PR**







**Loiza Street  
San Juan, PR**







Jayuya, PR







Jayuya, PR







**Jayuya, PR**



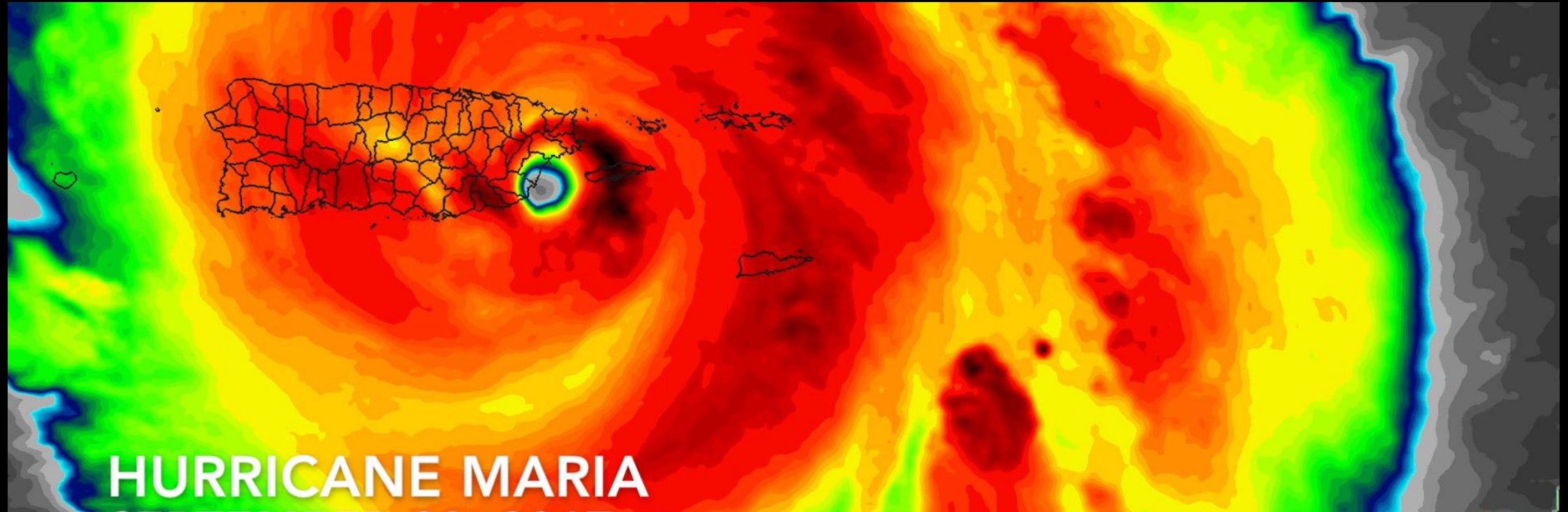




Jayuya, PR







---

# HURACAN MARIA Y PUERTO RICO QUE PASO? COMO ESTAMOS?

IMPACTOS; MAREJADA CICLONICA/OLEAJE





**El Mani  
Mayaguez, PR**



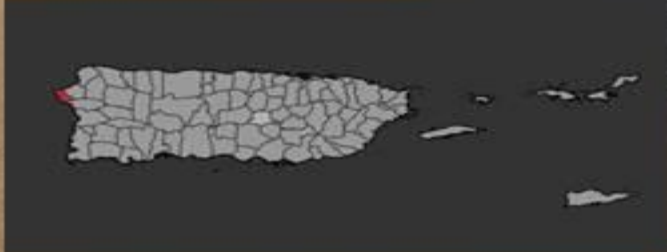




Estos  
contenedores  
son mantenidos  
por nosotros de  
seguridad las  
24 horas



**Rincon, PR**







**Rincon, PR**



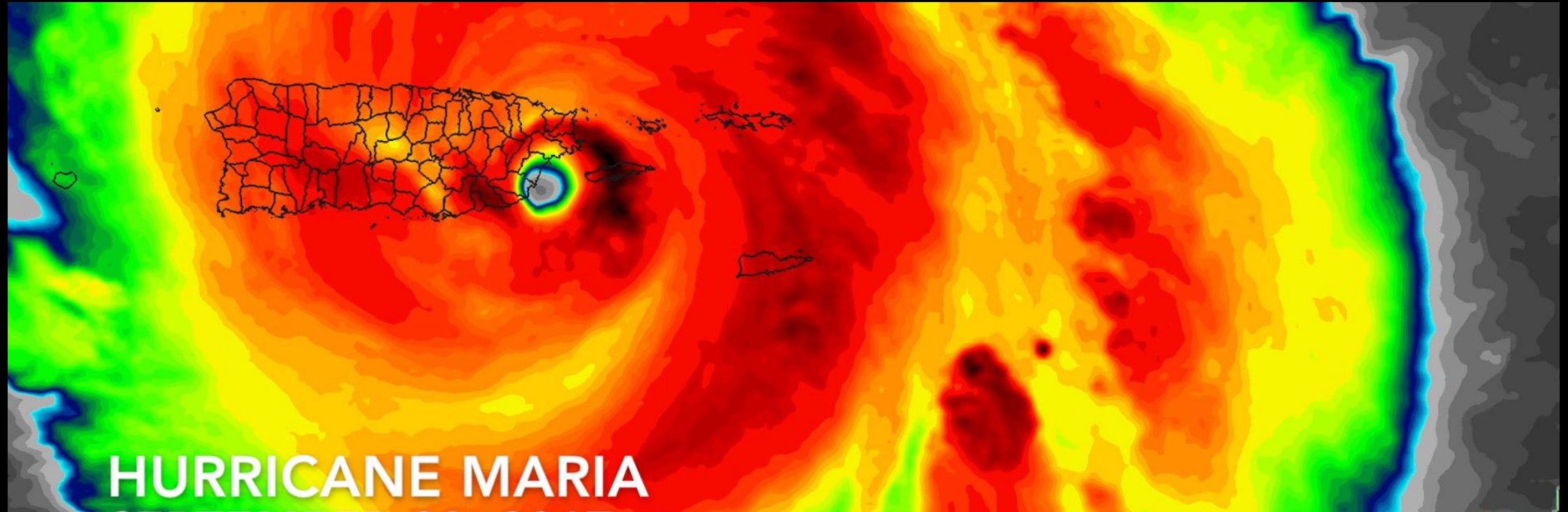




**Rincon, PR**







---

# HURACAN MARIA Y PUERTO RICO QUE PASO? COMO ESTAMOS?

IMPACTOS; FLORA



**#52 Highway Caimito  
San Juan, PR**

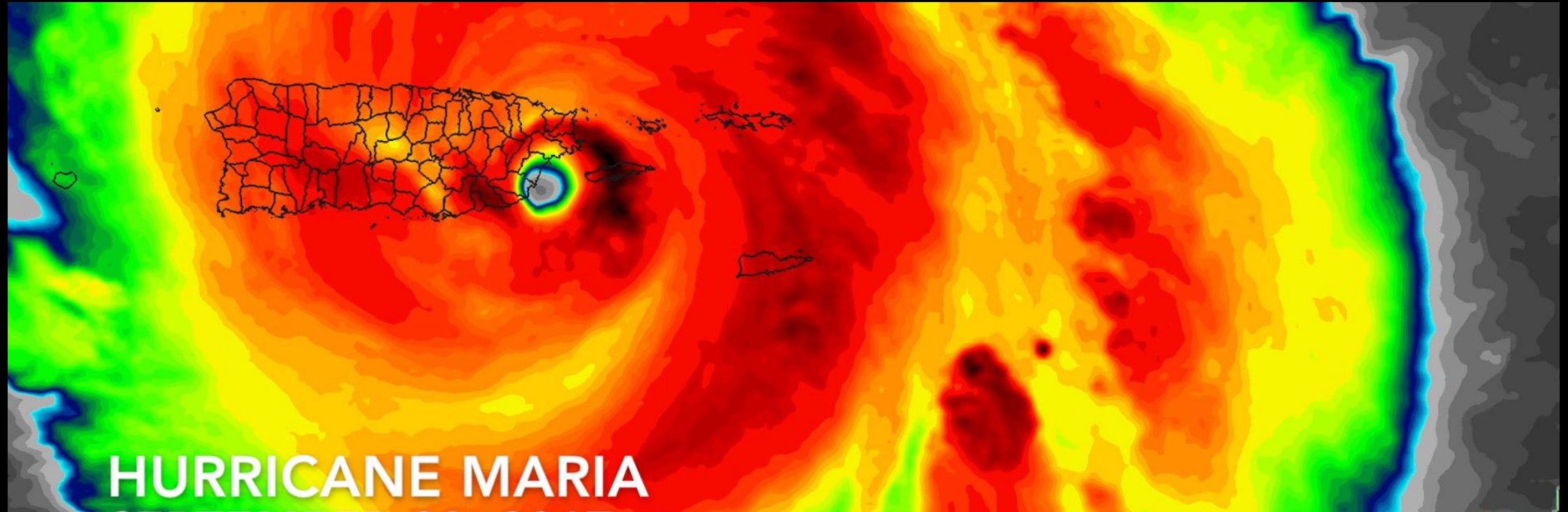




**Highway 52 Caimito**  
**San Juan, PR**







---

# HURACAN MARIA Y PUERTO RICO QUE PASO? COMO ESTAMOS?

IMPACTOS; DESLIZAMIENTOS DE TIERRA





Utuado, PR







Utuado, PR







Utüado, PR







**Utuado, PR**

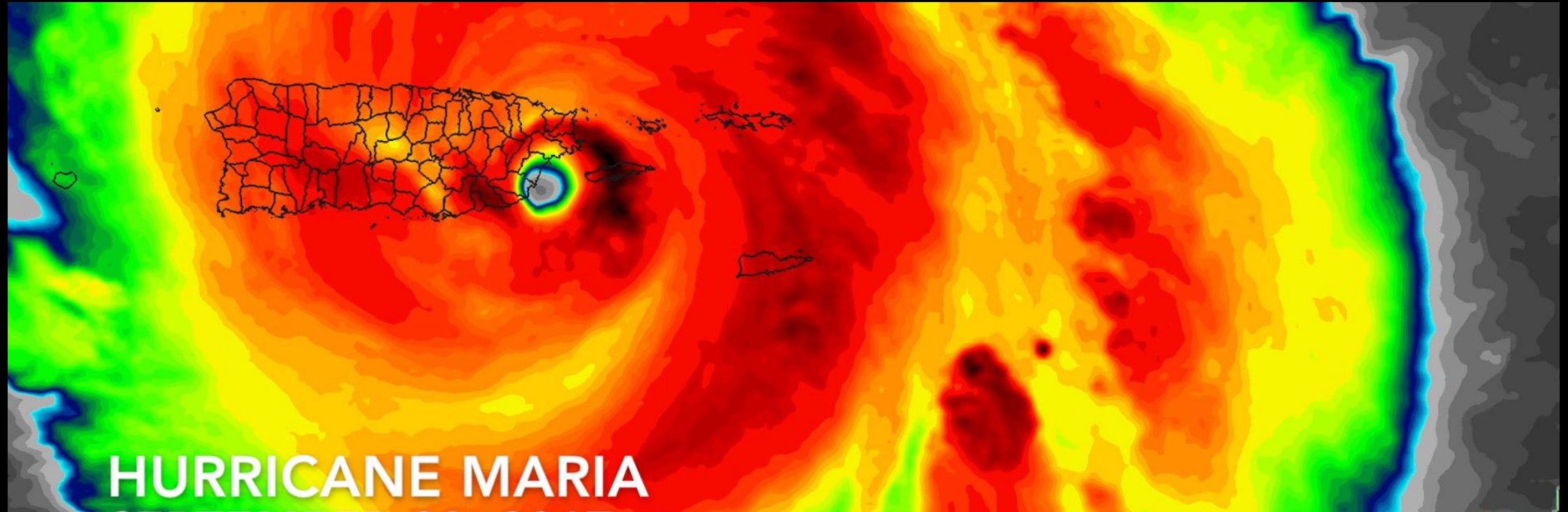






**BARRANQUITAS**  
PUERTO RICO





---

# HURACAN MARIA Y PUERTO RICO QUE PASO? COMO ESTAMOS?

LUZ AL FINAL DEL TUNEL

















NOAA  
National  
Weather  
Service

Handicap parking sign

Handicap parking symbol

Handicap parking symbol





# !Gracias...Thank you...!

