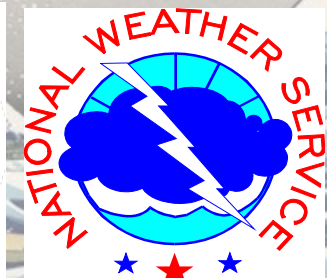


Keeping Blue Water Mariners Safe - Tropical Analysis and Forecast Branch (TAFB) Marine Products and Services

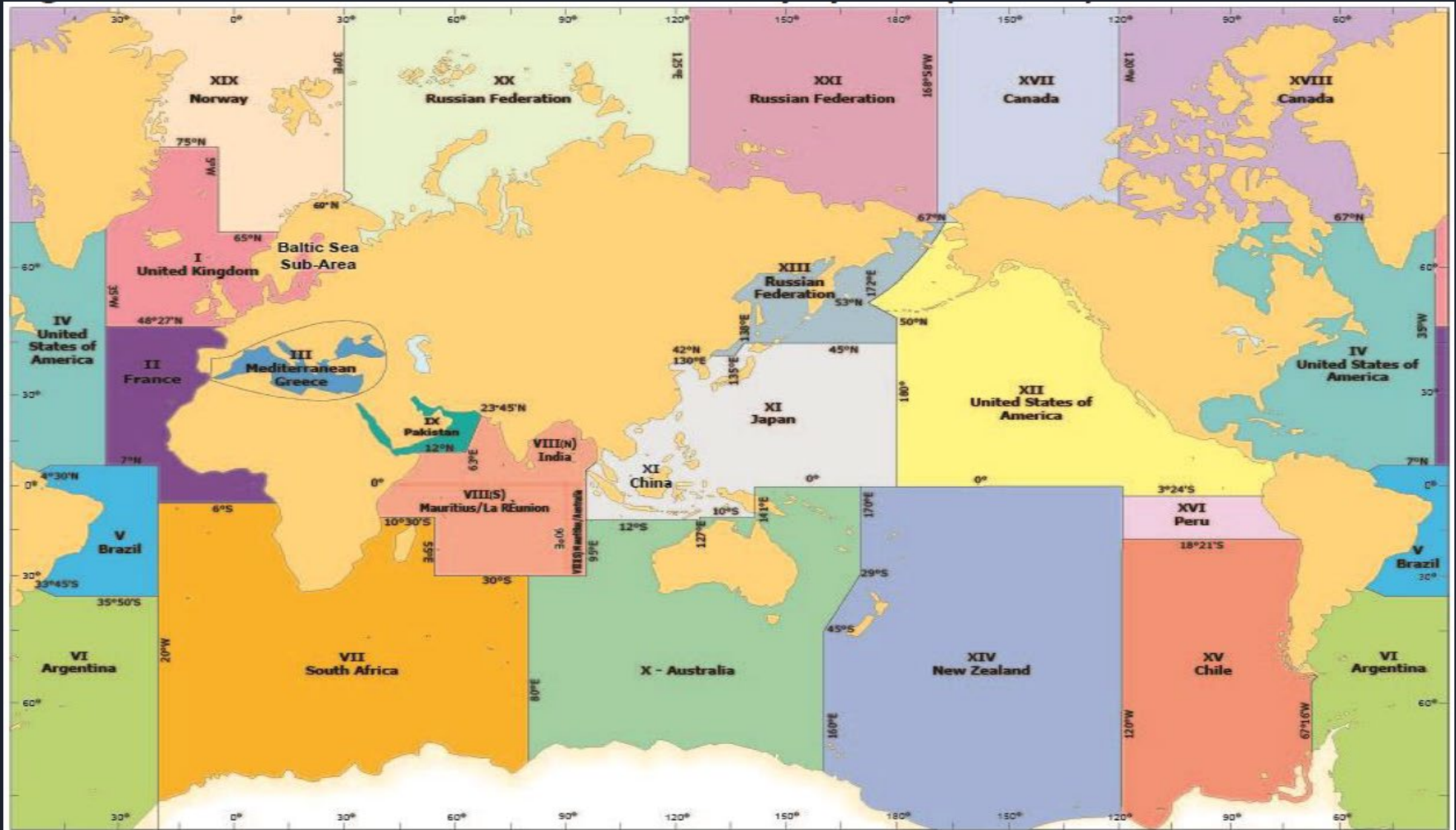
To provide meteorological analysis, forecasts and warnings over the tropical and subtropical oceans for the protection of life and property



A Bad Cruise

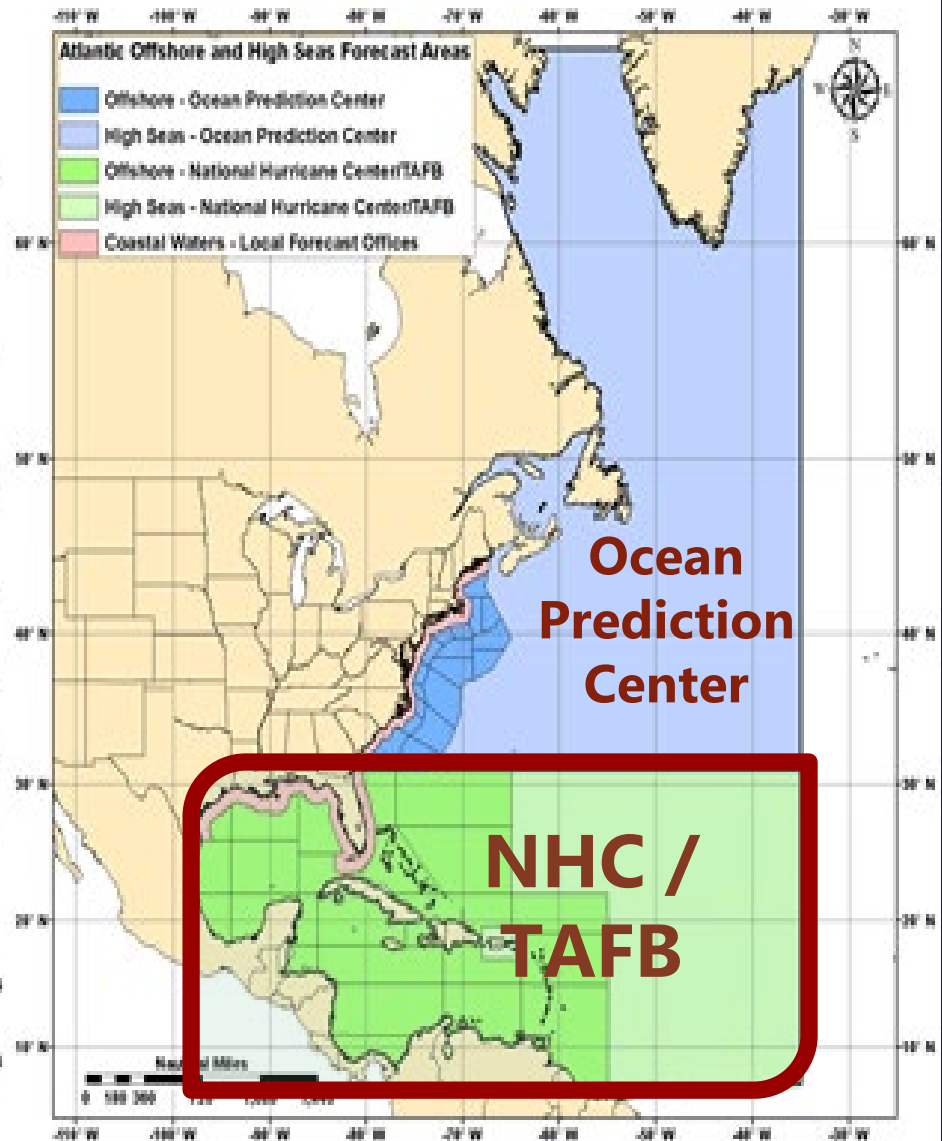
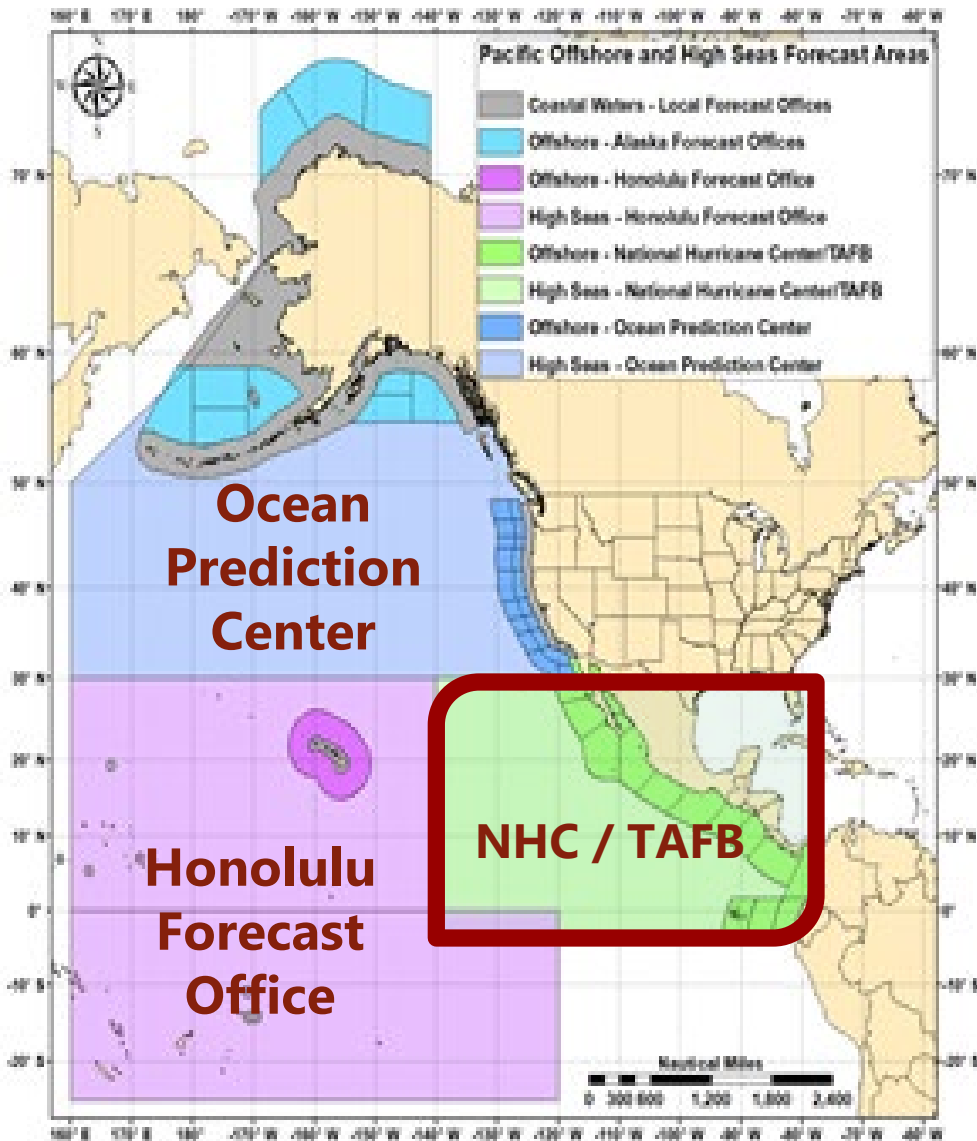


Global High Seas Forecasts - International Maritime Organization

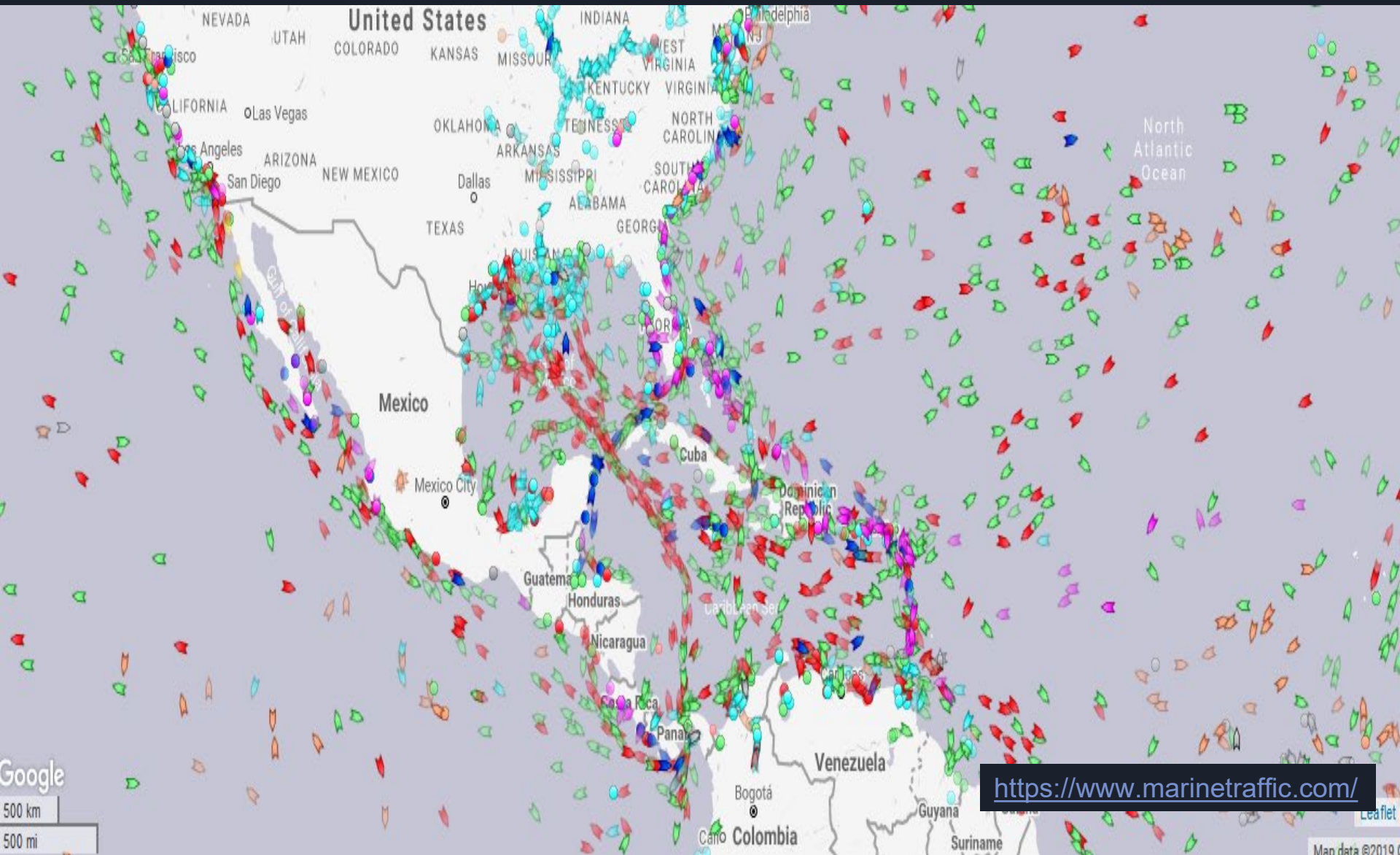




NHC/TAFB - Areas of Responsibility



Ships over the Open Ocean



Google

500 km

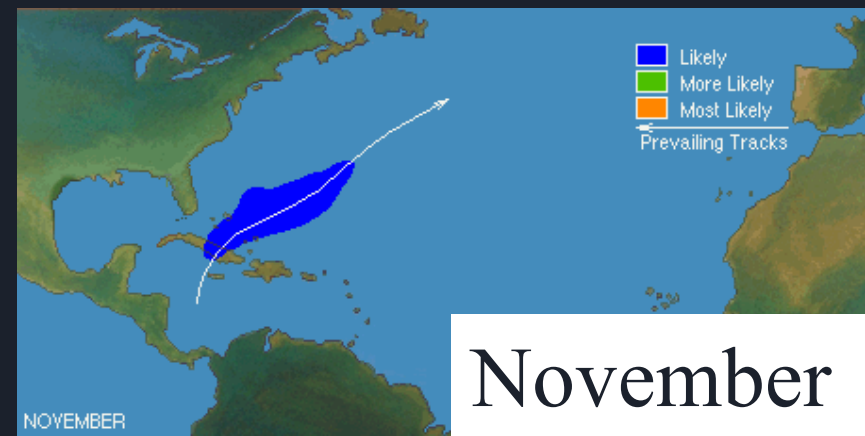
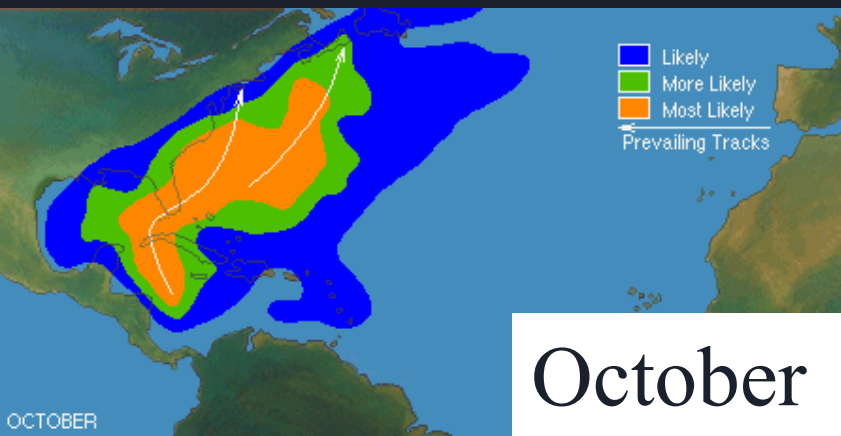
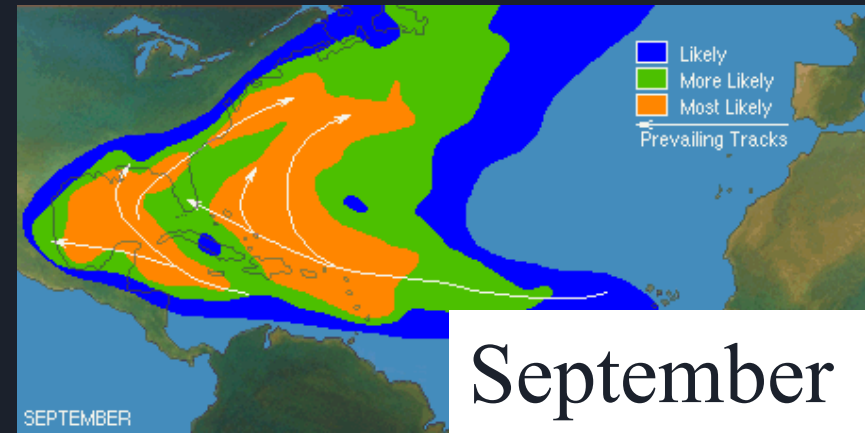
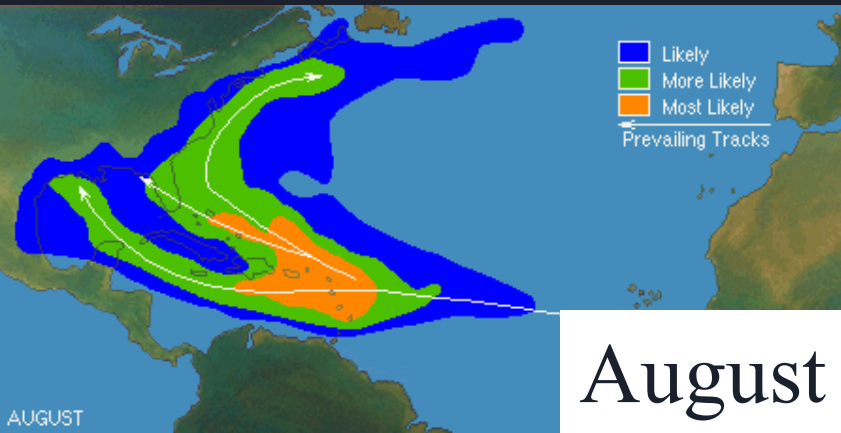
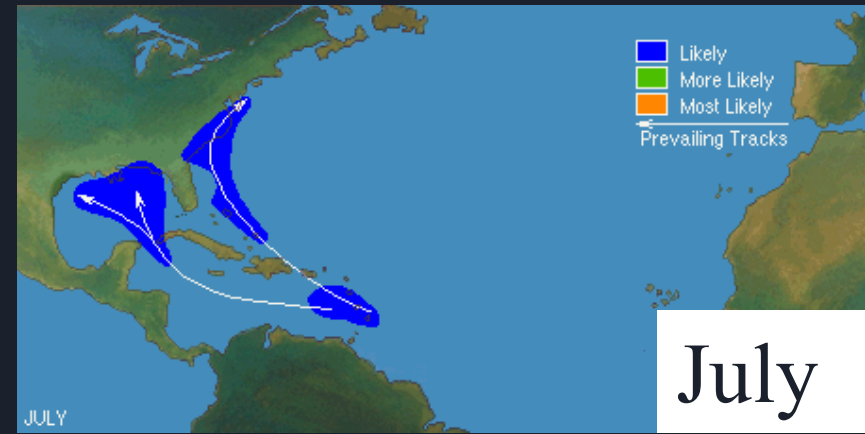
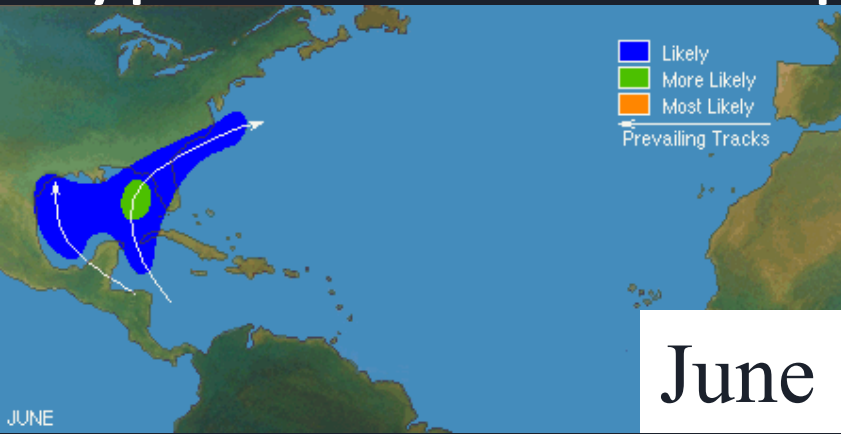
500 mi

<https://www.marinetraffic.com/>

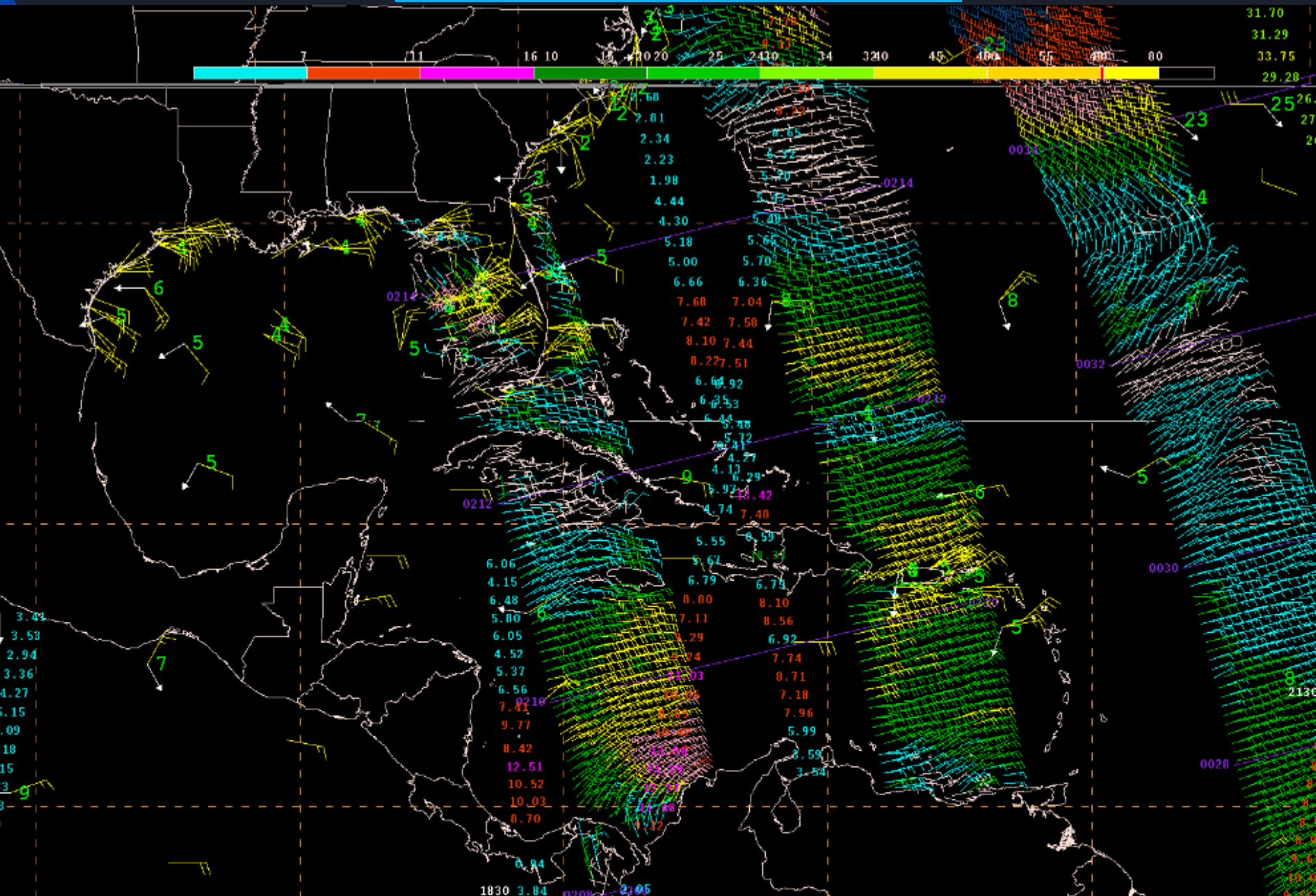
Leaflet

Map data ©2019

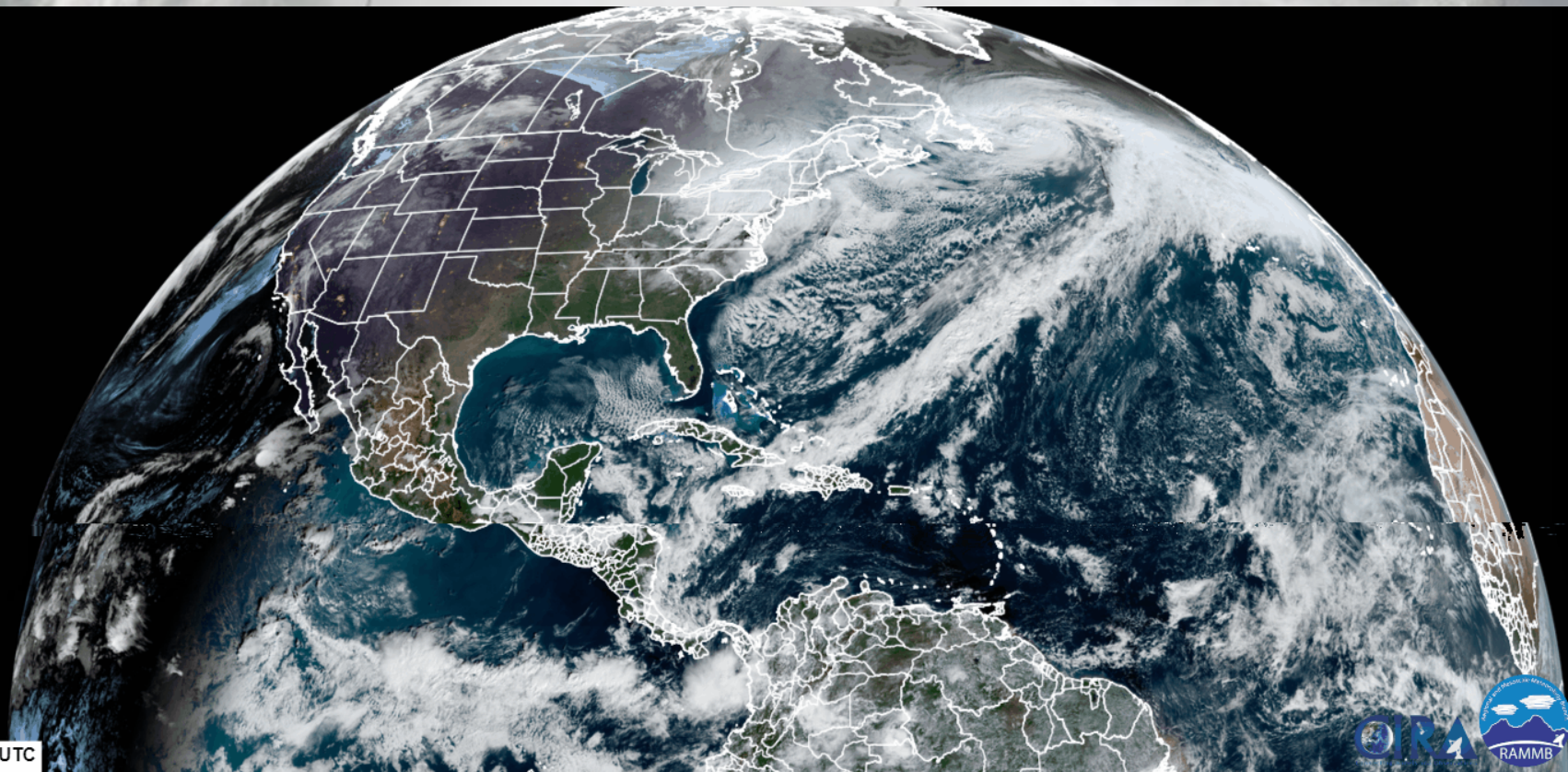
Typical areas for tropical storms and hurricanes



Tools - Observations



Tools - Observations



2020-12-09 14:40:12 UTC



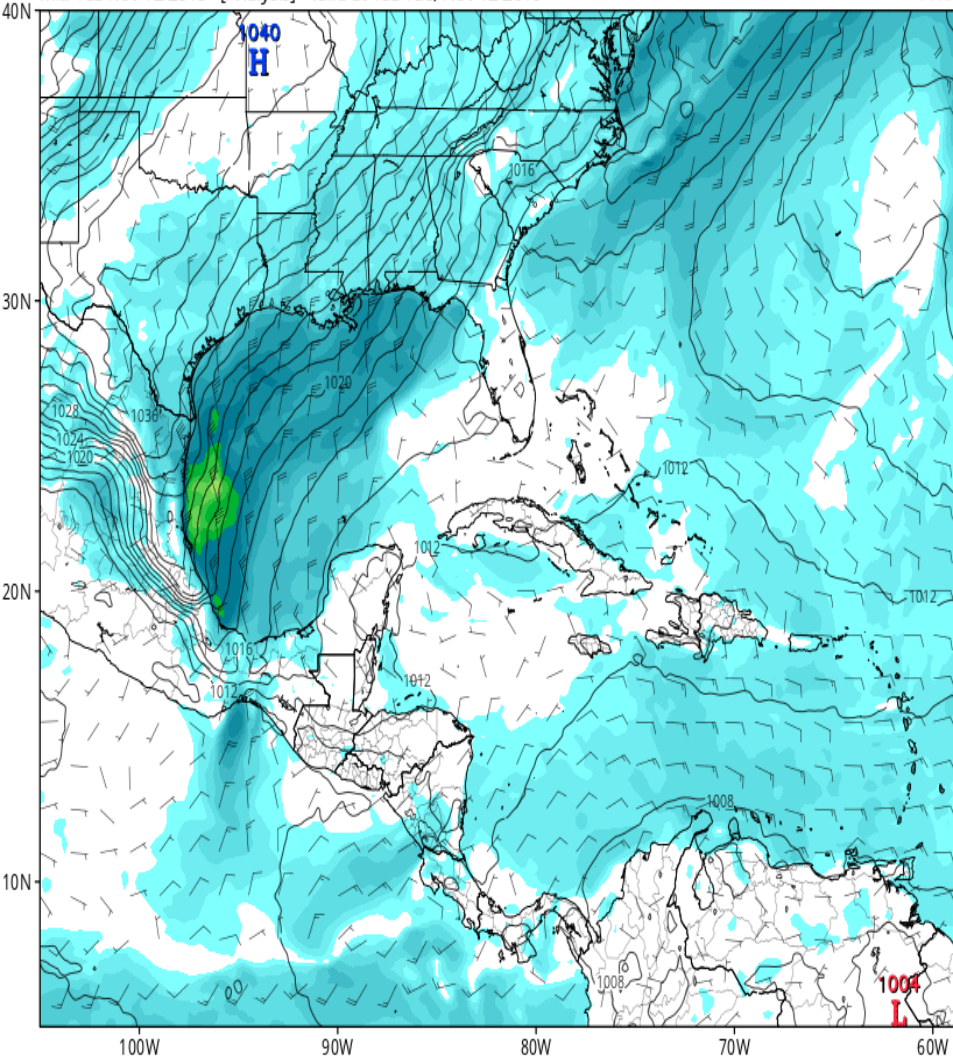
GOES-16: A new era of geo-stationary satellite imagery and data



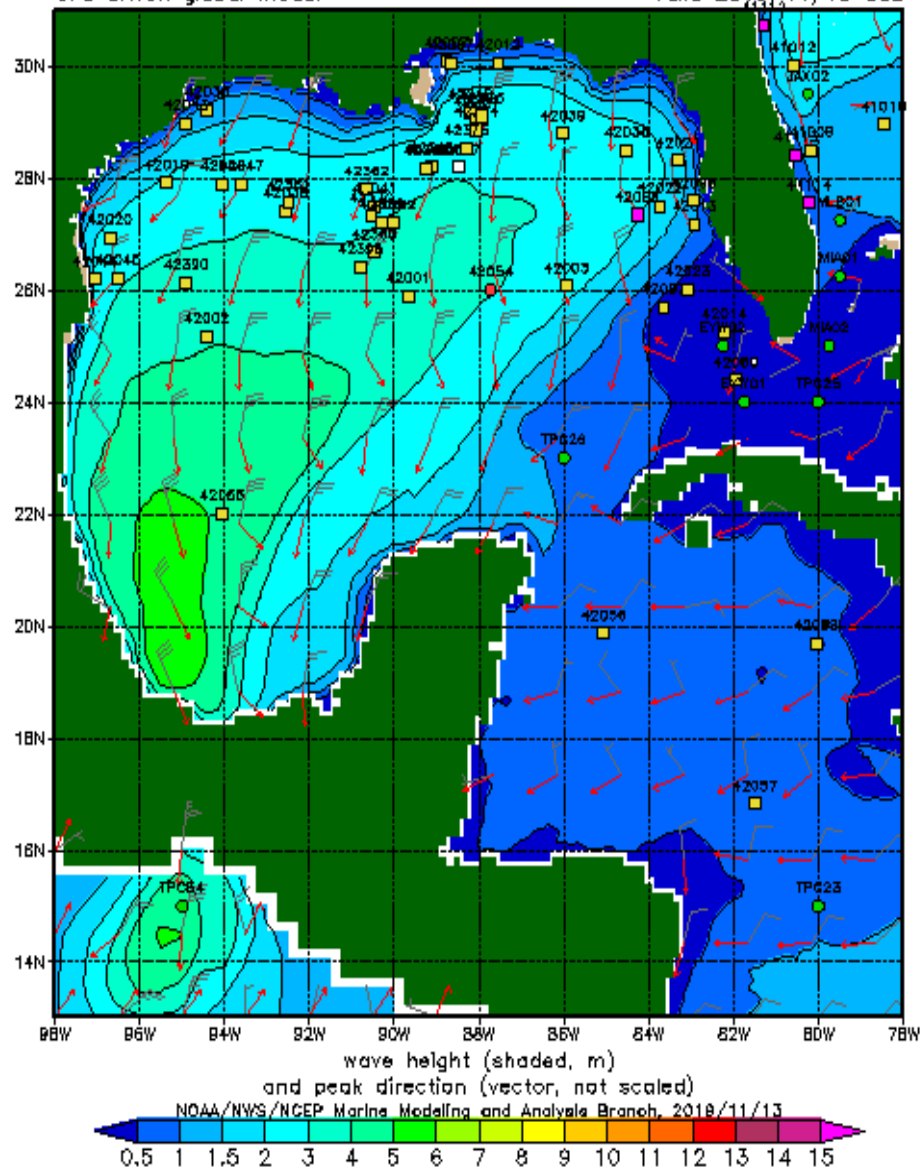
Tools - Models

GFS MSLP (mb) & 10m Wind Speed (kt)

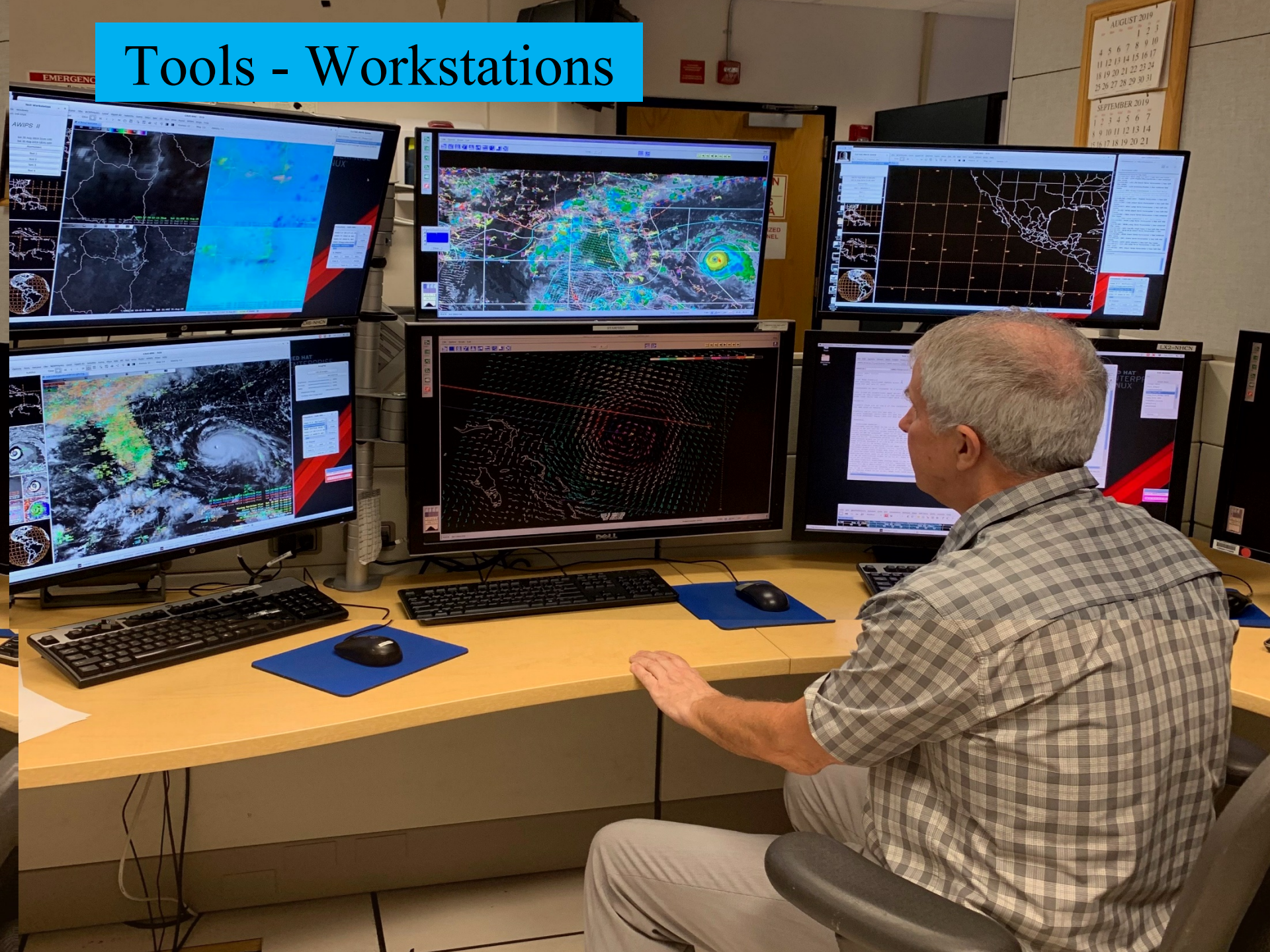
Init: 18z Nov 12 2019 [Analysis] valid at 18z Tue, Nov 12 2019



NMWW3 20191113 t12z hindcast
GFS driven global model valid 2019/11/13 03z



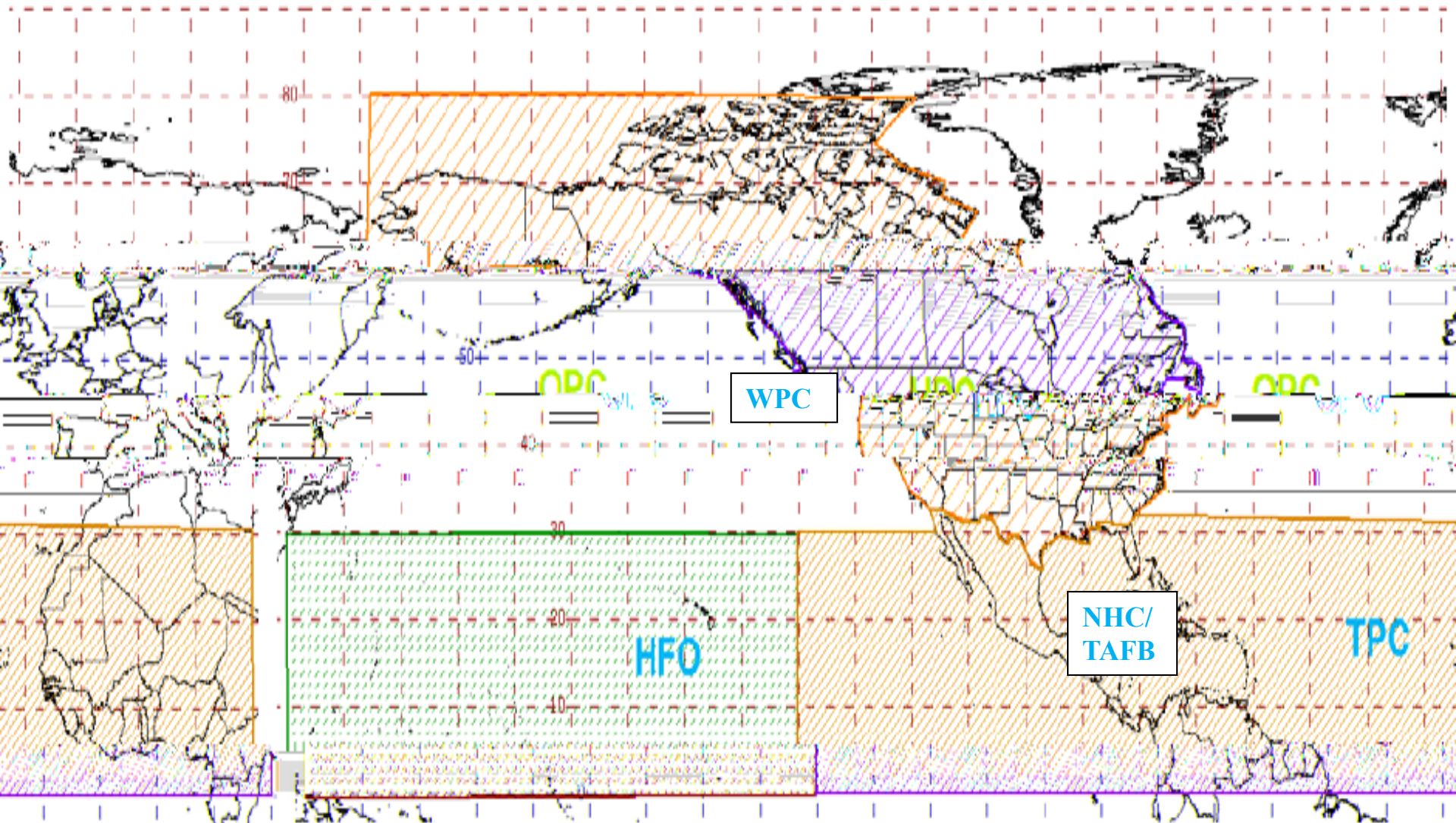
Tools - Workstations



Unified Surface Analysis

Areas of Responsibility

https://www.nhc.noaa.gov/tafb_latest/USA_latest.gif



NHC/TAFB Wind and Wave Forecasts

High Seas and Offshores Text Forecasts

HIGH SEAS FORECAST
NWS NATIONAL HURRICANE CENTER
1030 UTC FRI OCT 02 2015

SUPERSEDED BY NEXT ISSUANCE IN 6 HOURS

SEAS GIVEN AS SIGNIFICANT WAVE HEIGHT...WHICH IS THE AVERAGE HEIGHT OF THE HIGHEST 1/3 OF THE WAVES. INDIVIDUAL WAVES MAY BE MORE THAN TWICE THE SIGNIFICANT WAVE HEIGHT.

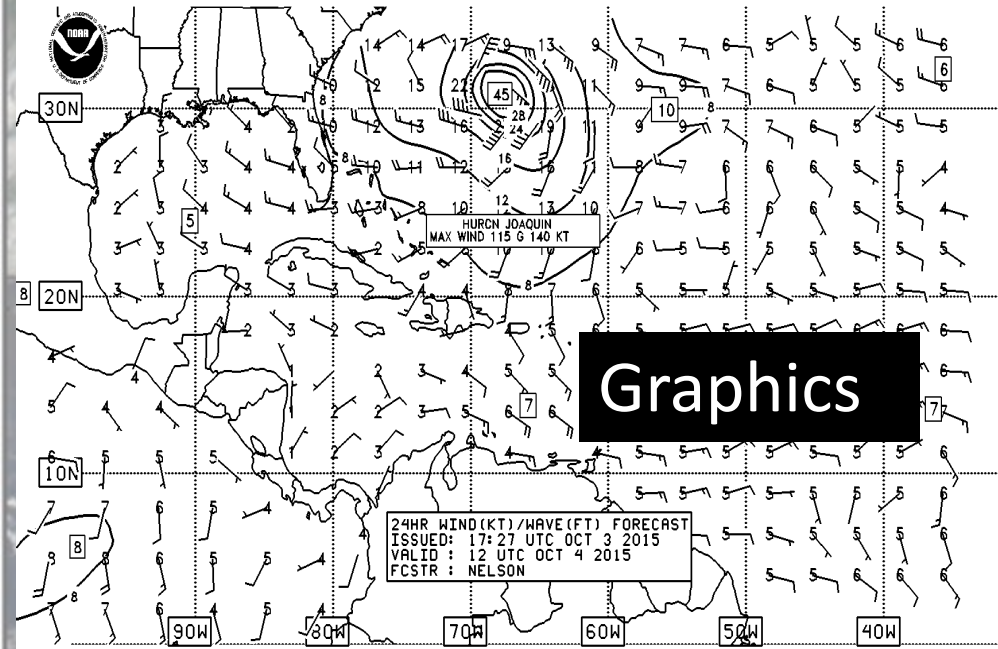
PAN PAN

ATLANTIC FROM 07N TO 31N W OF 35W INCLUDING CARIBBEAN SEA AND GULF OF MEXICO.

SYNOPSIS VALID 0600 UTC FRI OCT 02.
24 HOUR FORECAST VALID 0600 UTC SAT OCT 03.
48 HOUR FORECAST VALID 0600 UTC SUN OCT 04.

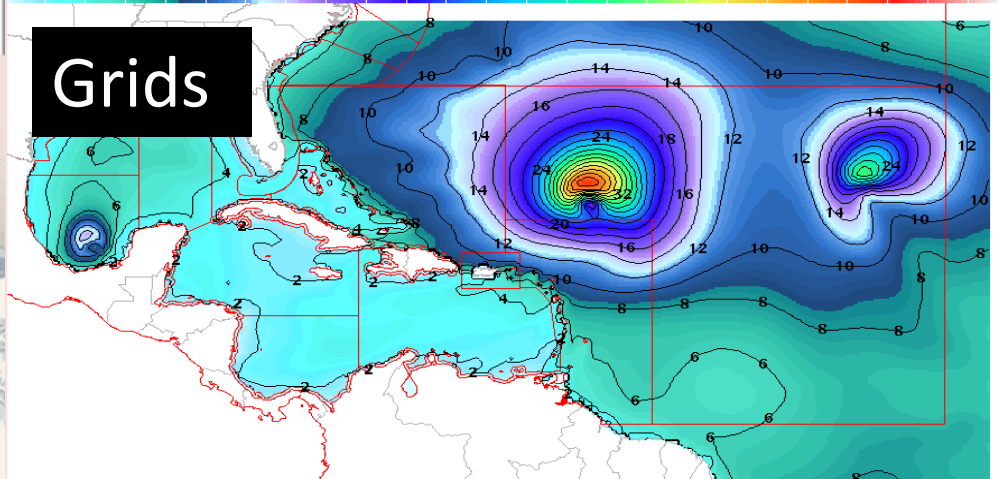
.WARNINGS.

...HURRICANE WARNING...
.HURRICANE JOAQUIN NEAR 23.3N 74.7W 935 MB AT 0900 UTC OCT 02 MOVING NW OR 315 DEG AT 3 KT. MAXIMUM SUSTAINED WINDS 115 KT GUSTS 140 KT. TROPICAL STORM FORCE WINDS WITHIN 160 NM W SEMICIRCLE...140 NM NE QUADRANT AND 180 NM SE QUADRANT. SEAS 12 FT OR GREATER WITHIN 400 NM NE QUADRANT...150 NM SE QUADRANT...120 NM SW QUADRANT...AND 300 NM NW QUADRANT WITH SEAS TO 39 FT. ELSEWHERE S OF 28N BETWEEN 70W AND 78W WINDS 20 TO 33 KT. SEAS 9 TO 12 FT. N OF 28N BETWEEN 70W AND 75W E WINDS 20 TO 25 KT SEAS 8 TO 10 FT. REMAINDER OF AREA N OF 21N BETWEEN 65W AND 78W AND OUTSIDE OF THE BAHAMAS WINDS 20 KT OR LESS. SEAS 8 TO 11 FT IN MIXED SWELL.



Graphics

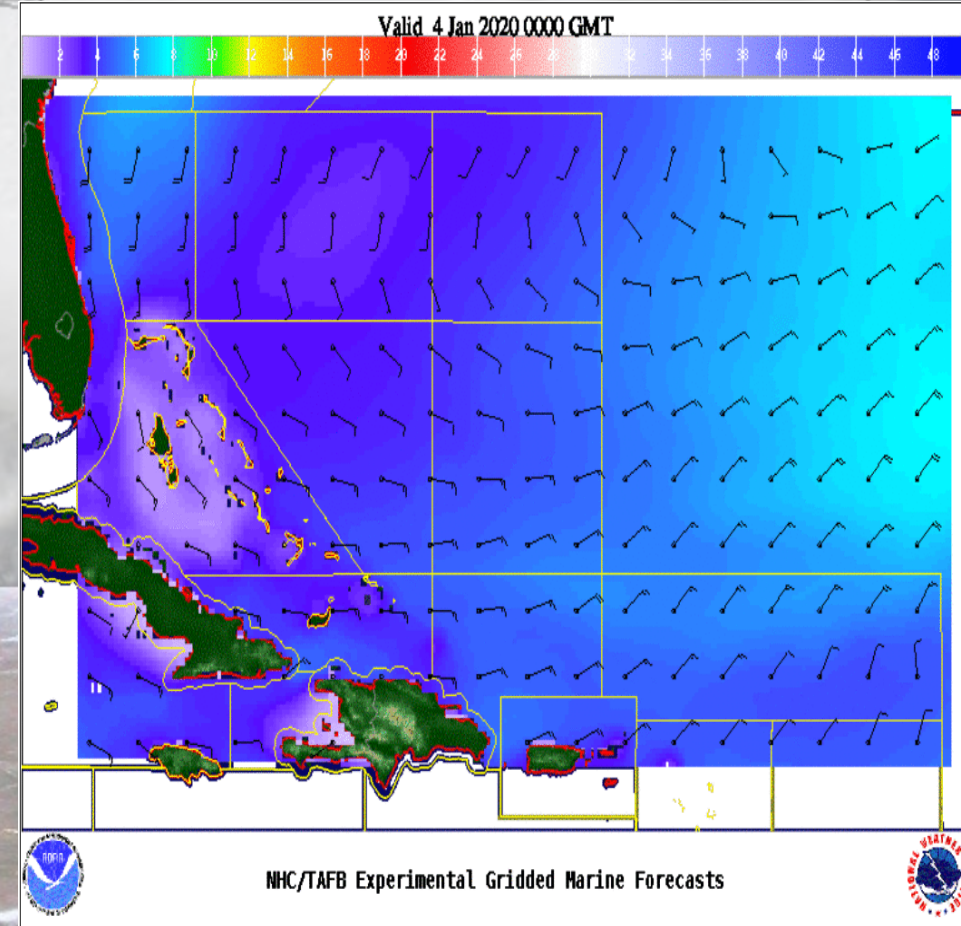
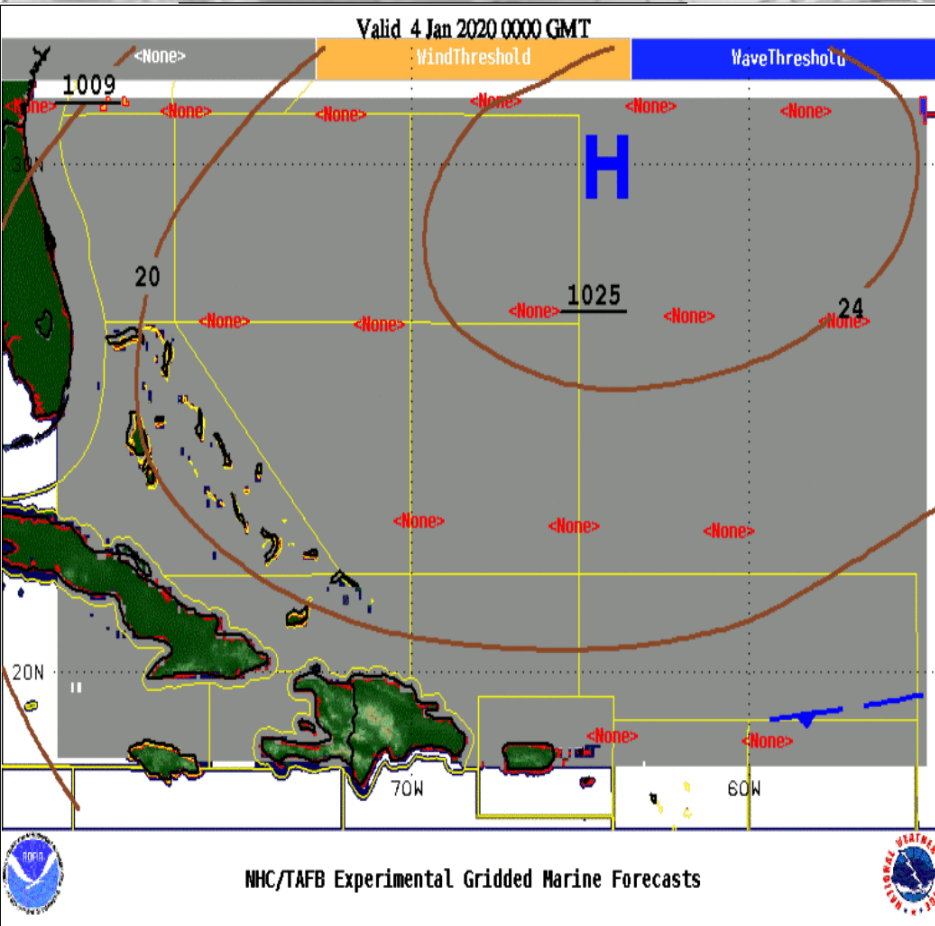
Grids



Significant Wave Height (ft) Valid 17 Sep 2010 0000 GMT

Marine Composite Page – Winds, Waves, Warnings, and Features

https://www.nhc.noaa.gov/marine/forecast/enhanced_atcfull.php



Red: Gale Warning
Orange: Winds > 23 kt Blue: Seas \geq 8 ft

Colors: Seas (in feet)
Flags: Wind barbs (in knots)

EL FARO

33 fatalities when it sank in Hurricane Joaquin (2015)



BOURBON RHODE

11 fatalities when it sank in Hurricane Lorenzo (2019)

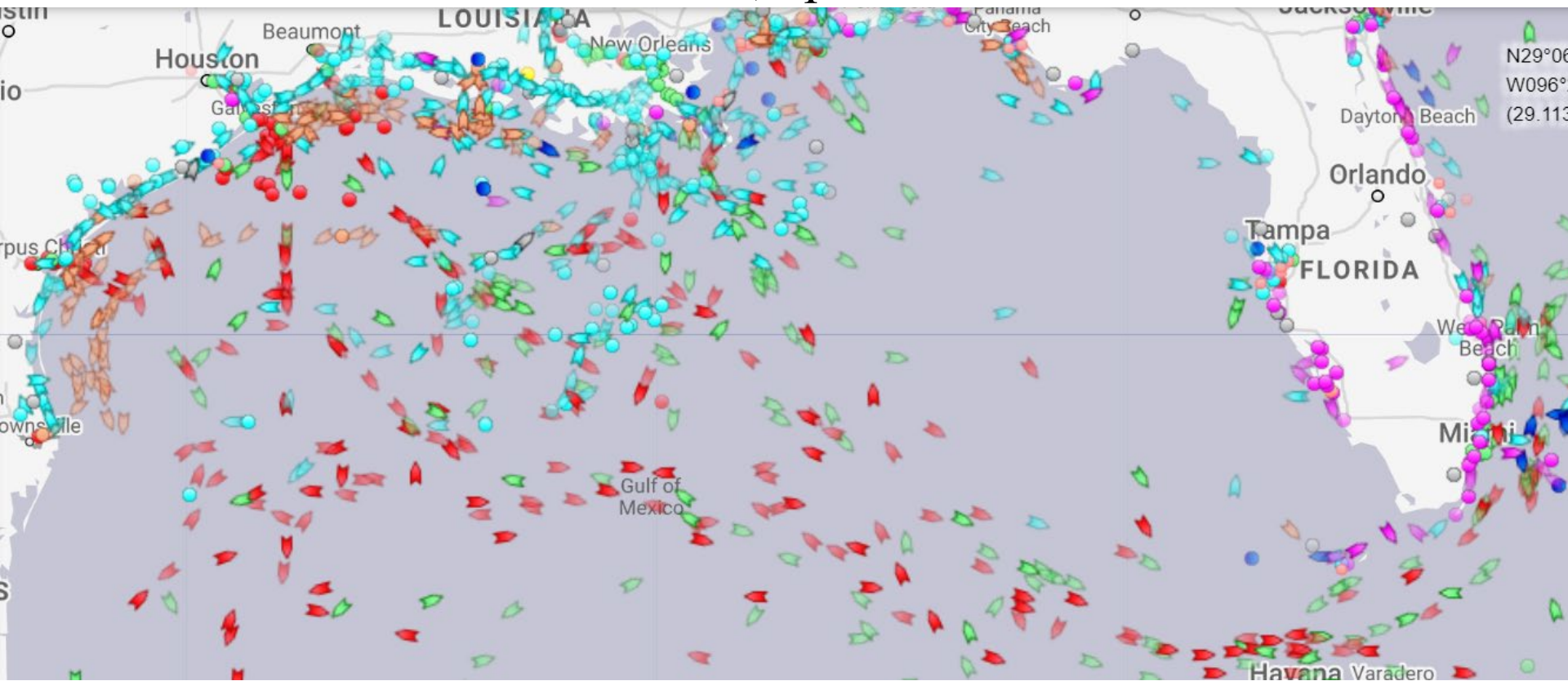
BOUNTY

2 fatalities when it sank in Hurricane Sandy (2012)

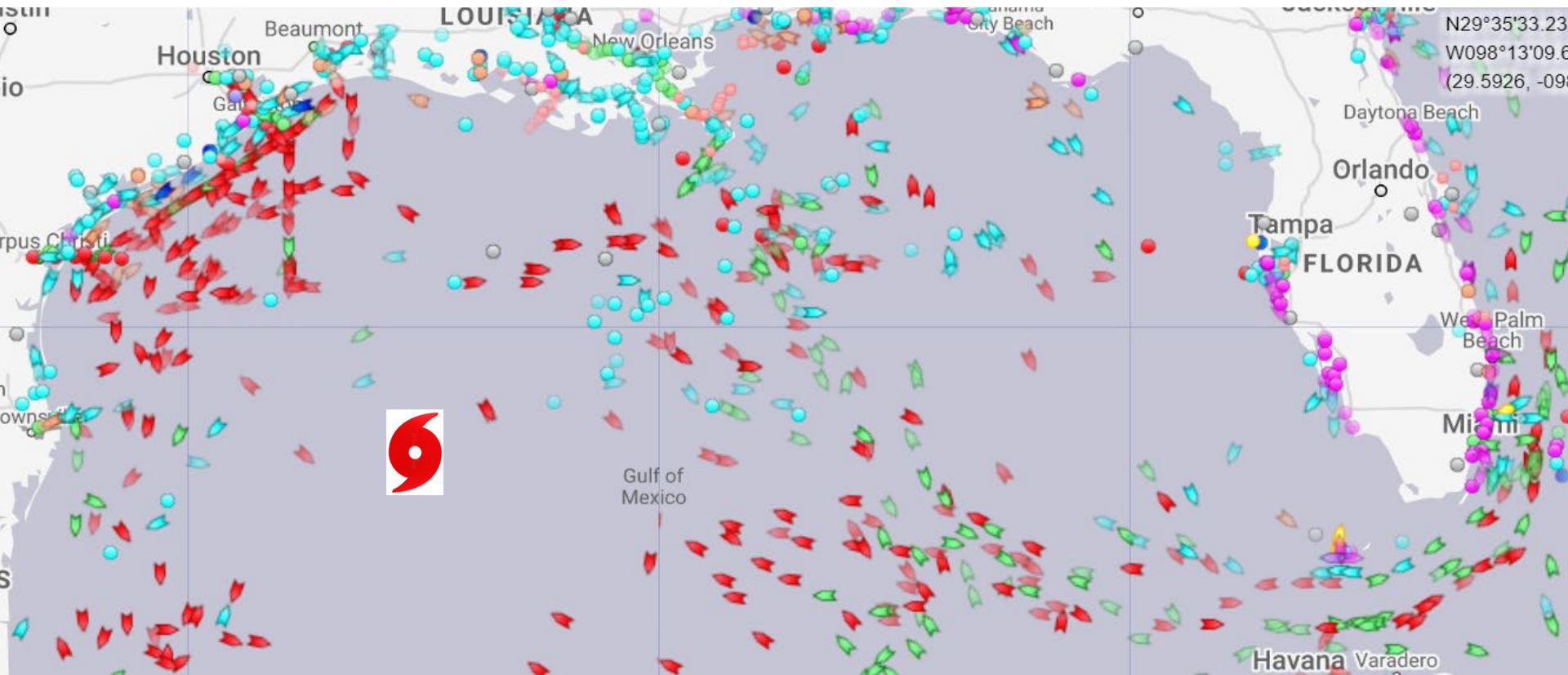
FANTOME

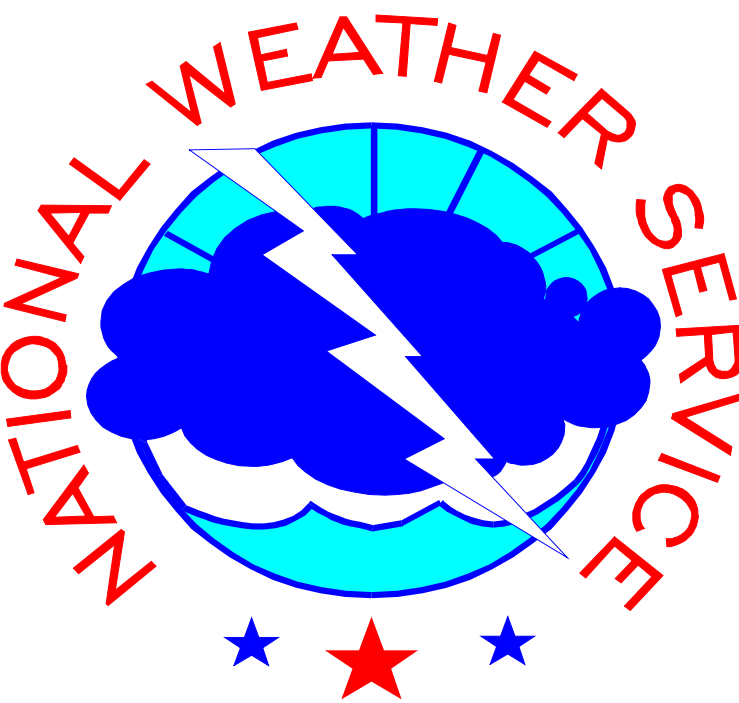
31 fatalities when it sank in Hurricane Mitch (1998)

Hurricane Delta - 2020 October 6th, 2pm EDT Weather Avoidance by Ships



Hurricane Delta - 2020 October 8th, 5pm EDT Weather Avoidance by Ships





**MEMORANDUM OF AGREEMENT
BETWEEN
THE UNITED STATES COAST GUARD
AND
THE NATIONAL OCEANIC AND
ATMOSPHERIC ADMINISTRATION
NATIONAL WEATHER SERVICE
REGARDING
THE MANAGEMENT OF MARINE
WEATHER INFORMATION**

APPROVED: 03/30/2020

APPROVED: 3/31/20

A handwritten signature in blue ink, appearing to read "Louis W. Uccellini".

Louis W. Uccellini
NOAA Assistant Administrator
for Weather Services

A handwritten signature in blue and red ink, appearing to read "RVT".

Richard V. Timme
Rear Admiral, USCG
Assistant Commandant for
Prevention Policy

2020 Impact-based Decision Support Services to U.S. Coast Guard Districts by Tropical Analysis and Forecast Branch (TAFB)/National Hurricane Center (NHC)

37 Spot Forecasts by NHC/TAFB for 2020 U.S. Coast Guard District Operations



Atlantic Maritime Search and Rescue Regions

UNCLASSIFIED



D8/New Orleans:

- Trop. Storm CRISTOBAL (6 briefings)
- Hurricane HANNA (3 briefings)
- Hurricane ISAIAS (2 briefings)
- Hurricane LAURA (8 briefings)
- Hurricane SALLY (7 briefings)
- Trop. Storm BETA (5 briefings)
- Hurricane DELTA (7 briefings)
- Hurricane ZETA (5 briefings)

88 Hurricane Briefings

D7/Miami:

- Trop. Storm ARTHUR (3 briefings)
- Trop. Storm CRISTOBAL (3 briefings)
- Trop. Storm GONZALO (2 briefings)
- Hurricane ISAIAS (12 briefings)
- Trop. Storm JOSEPHINE (2 briefings)
- Hurricane LAURA (9 briefings)
- Hurricane DELTA (1 briefing)
- Hurricane ETA (13 briefings)

"The Spot Forecast is a huge tool year-round for us during search-and-rescue.

Likewise, I really want to thank all those responsible for creating the [Coast Guard weather webpage](#), which is extremely valuable to us. It has so many of the products that we use on a daily basis, so I thank you and the entire team for that."

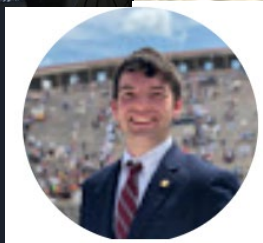
USCG District 7 Commandant
RADM Eric Jones

"You [NHC/TAFB] are a crucial and critical partner to us. On behalf of all of District 8 with 4,000 men and women that serve here in uniform, we are very, very grateful for the support you have given us. We consider you one of our key partners to ensure that the American public is served well across all of District 8. We're very proud of the relationship that we enjoy with you all."

USCG District 8 Commandant
RADM John Nadeau

National Hurricane Center/Tropical Analysis and Forecast Branch

<https://www.nhc.noaa.gov/marine/?atlc>



1-305-229-4424 –Atlantic/Gulf/Caribbean

1-305-229-4425 –Pacific

On Twitter: [@NHC_TAFB](https://twitter.com/NHC_TAFB)