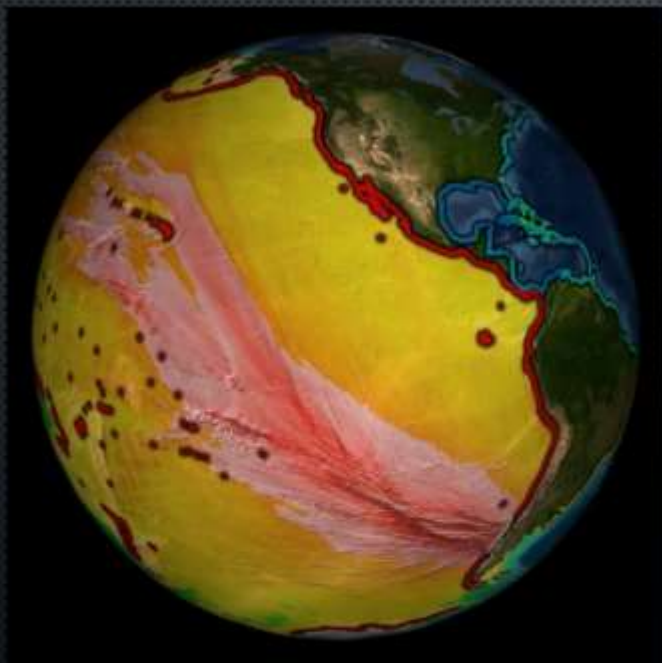


SOS EDUCATION FORUM



P
L

WHAT IS IT?



Leon Geschwind
NOAA Office of Coastal Management, NOS

TSUNAMI HISTORICAL SERIES

5 DATASETS AVAILABLE (SO FAR):

- CASCADIA – 1700
- ALEUTIAN ISLANDS – 1946
- ALASKA – 1964
- JAPAN – 2011
- CHILE – 2010
- CHILE - 1960

GoToMeeting Control Panel

Screen Sharing

Not showing anything.

Show Main Screen Stop Sharing Screen Give Keyboard & Mouse Change Presenter

Record Settings

Attendees: 1 of 101 (max)

Names - Alphabetically

HBarry Peddicord - Organizer, Presenter, Me

All All Invite

Audio

Computer audio - + - Phone call

Built-in Microphone

Apple USB audio device

Talking:

Webcam

Chat

Type message here.

To: All - Entire Audience Send

Meeting ID# 688-351-837

GoToMeeting



PURPOSE



abreast 

[uh-brest]

[Examples](#) [Word Origin](#)

[See more synonyms on Thesaurus.com](#)

adverb, adjective

1. side by side; beside each other in a line:
They walked two abreast down the street.
2. equal to or alongside in progress, attainment, or awareness (usually followed by *of* or *with*):
to keep abreast of scientific developments; keeping abreast with the times.



IN THE SOS EDUCATION FORUM ... LEARN ABOUT:

- LL L
-
-
-
- I
-
-
- L



ART & THE SPHERE



ART EXERCISE & THE SPHERE



ART & THE SPHERE



Divergent Plate Boundary

STUDENTS

Convergent Plate B

For example:

> Dataset: Volcano Location with Plate Tectonic overlay

- Divergent Plate Boundary: two plates move away from each other. Students gently pull the edges of the candy bar. They will notice the plate movement reveals the asthenosphere (caramel/nuts).
- Volcanoes are found along the Divergent plate boundaries
- The magma under the earth oozes up between the plates and hardens to become new crust.



> Dataset: Real-Time Earthquake

- Convergent Plate Boundary: two plates push against each other. Mountains occur at this boundary.
- Students gently push the two halves of their candy bar together. Mountains occur! Do you think an earthquake would occur along this boundary as well?



STUDENTS



P

Kid Art Contests



CONTEST ENTRY FORM – To be filled out by parents.

Child's Name: _____ Child's Age (select one): 3-6 7-9 10-13 14-18

Parent's Name: _____ Parent's Email: _____

Parent's Phone Number: _____ Home Address: _____

City: _____ State: _____ Zip/Postal Code: _____

Remember to join us at the Aldo Leopold Nature Center on Thursday, December 28th from noon to 7 pm to see the winning entries at our sneak-preview of brand new interactive exhibits and programs!



See Your Art Made into a Giant 3D Snow Globe!

Calling all budding artists! Here's your chance to create a piece of artwork that can be seen around the globe of the Aldo Leopold Nature Center! To enter, draw, paint or color a winter scene using the snow globe template on the back side of this entry form. Get creative—your art can depict animals, trees, animal tracks and anything else you see outdoors in winter!

The entry from each age category (3-6, 7-9, 10-13, and 14-18 years old) will be selected to be transformed into a 3 foot-wide turning snow globe during a special sneak preview of new exhibits and programs at the Aldo Leopold Nature Center on Thursday, December 28th from noon to 7 pm. Winning artists will receive free admission for themselves and their immediate family to the sneak preview.

Contest is open for ages 3 to 18 years old. One entry per child. Winners will be contacted with further instructions.

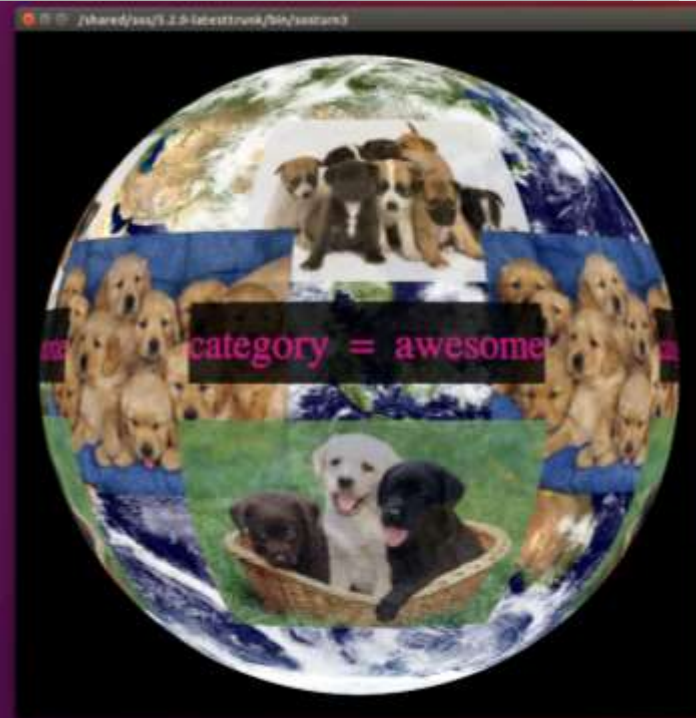
This entry form and artwork must be received by awccontests@naturecenter.com, mailed or dropped off at the Aldo Leopold Nature Center, 1410 Snow Globe Center, Aldo Leopold Nature Center, 330 Foresta Drive, Muskegon, MI 59713 by Noon on Monday, December, 29th, 2011.






VISUAL PLAYLIST EDITOR TRAINING

The screenshot shows the Visual Playlist Editor (VPE) software interface. The main window displays a 3D globe with a collage of puppy images. The interface includes a menu bar (File, Presentation, Default, Language, Help), a toolbar (New, Open, Save), and a 'Mode' selector (Presentation, Default). A left sidebar contains settings for 'Select PVP data' (text.html), 'Name' (test.html), 'Style' (Projector), and various timing and display options. A central control bar features buttons for 'Add Layer', 'PVP', 'Layers', and 'Media', along with playback controls and a 'Time (seconds)' field. Below this is a 'Layers' list with entries for 'Layer: Blue Marble', three 'PVP: puppy001.jpg' items, and 'PVP Text: test.html'. A status bar at the bottom shows the default URL: /shared/ssa/3.2.0-label/trunk/016/custom3.



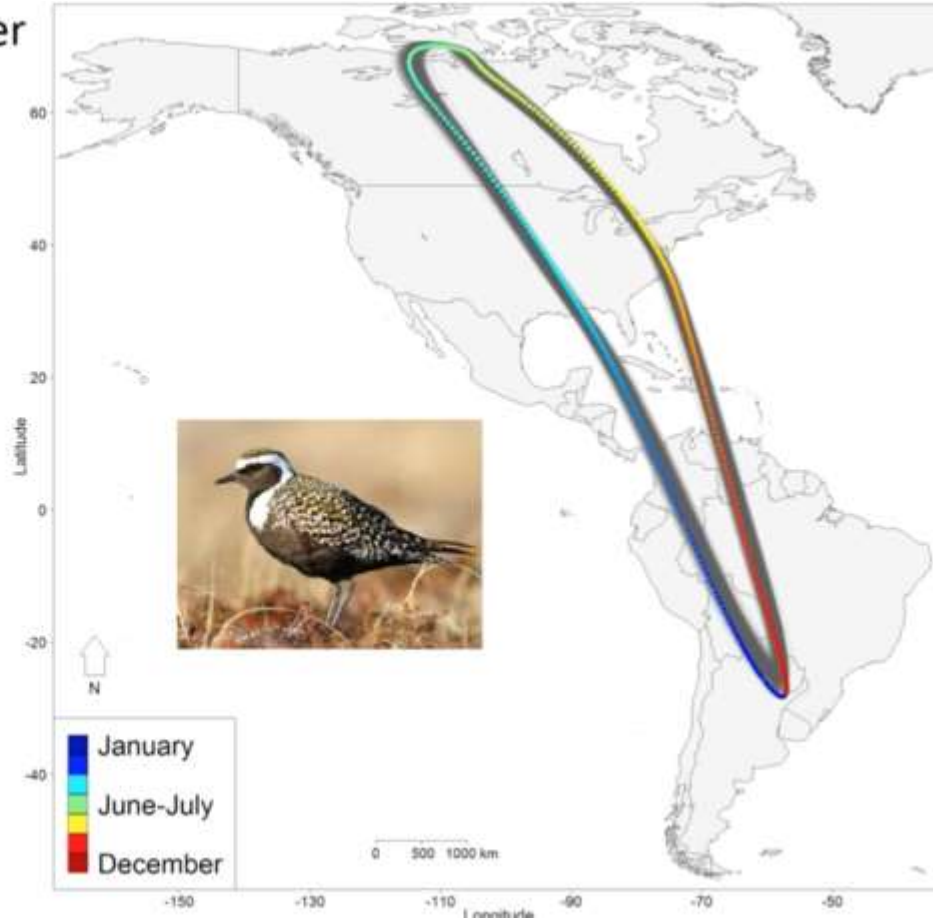
CONTENT IN DEPTH – BIRD MIGRATION

Example: American Golden-Plover
(*Pluvialis dominica*)

American Golden-Plover
Pluvialis dominica

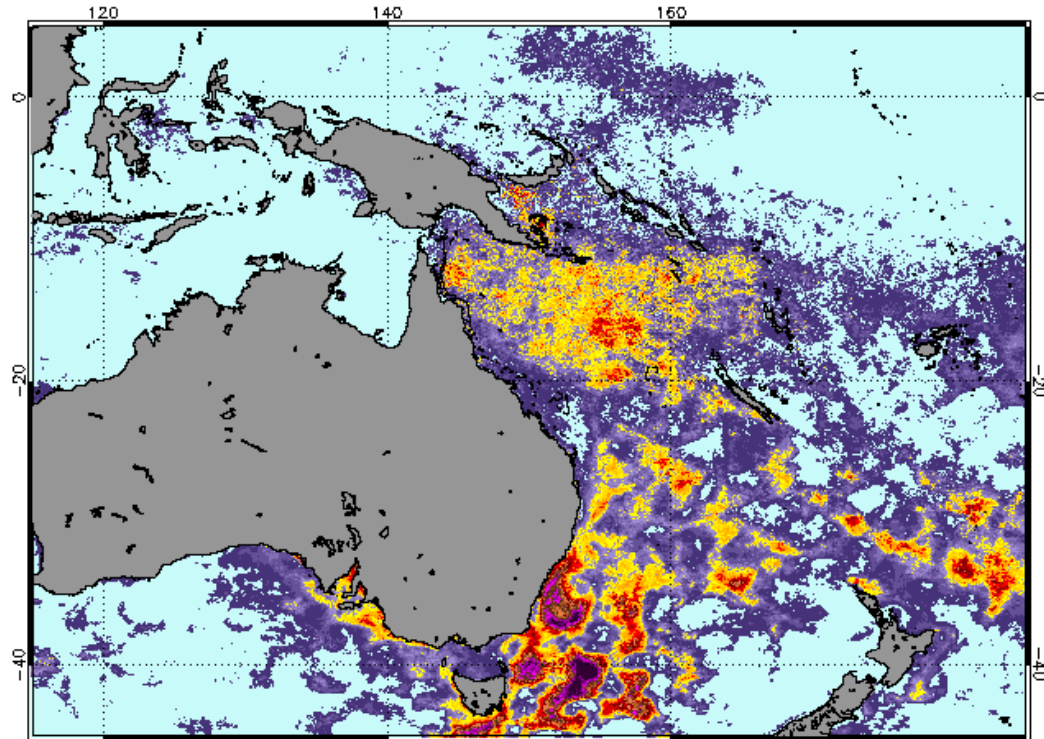


Map by Cornell Lab of Ornithology
Range data by NatureServe



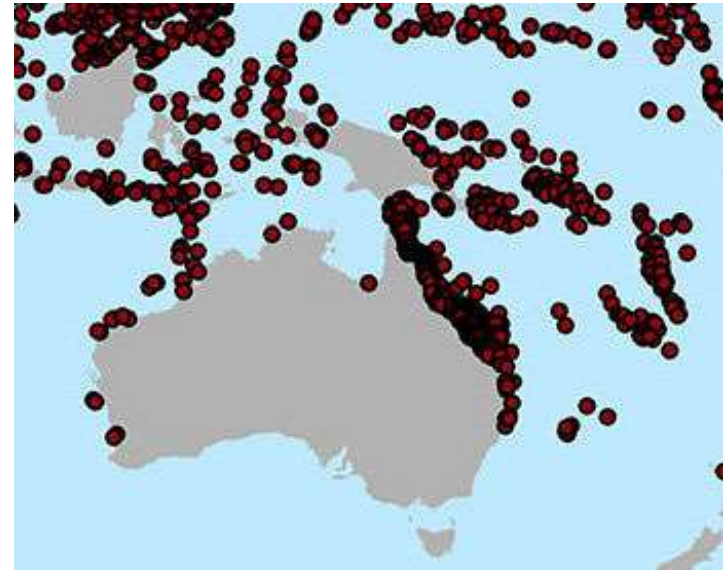
CONTENT IN DEPTH – RT CORAL BLEACHING

NOAA CRW Daily 5-km Geo-Polar Blended Night-Only DHW 16 Apr 2017



Two-thirds of Great Barrier Reef ravaged by coral bleaching

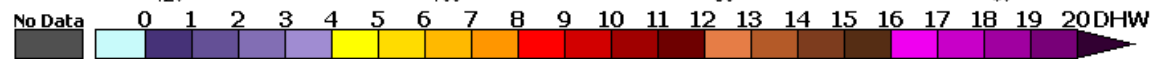
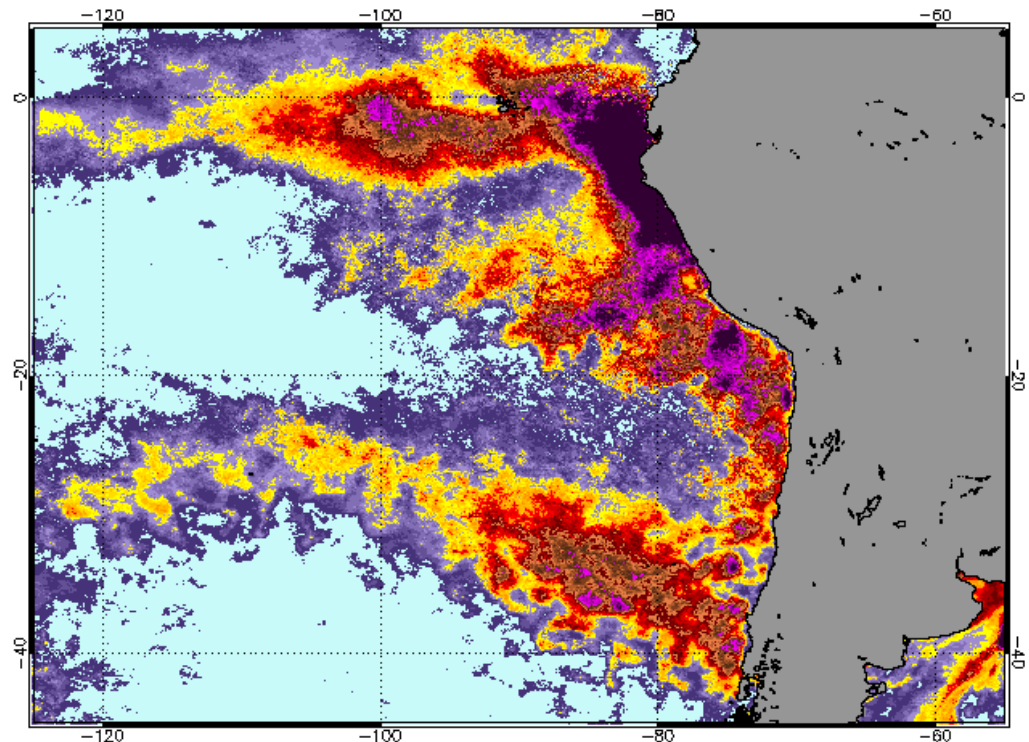
USA TODAY NETWORK Mary Bowman, USA TODAY Network 8:47 a.m. ET April 10, 2017



No Data 0 1 2 3 4 5 6 7 8 9 10 11 12 13 14 15 16 17 18 19 20 DHW

CONTENT IN DEPTH – RT CORAL BLEACHING

NOAA CRW Daily 5-km Geo-Polar Blended Night-Only DHW 17 Apr 2017



WHAT'S IN THE NEW(S) DATASETS



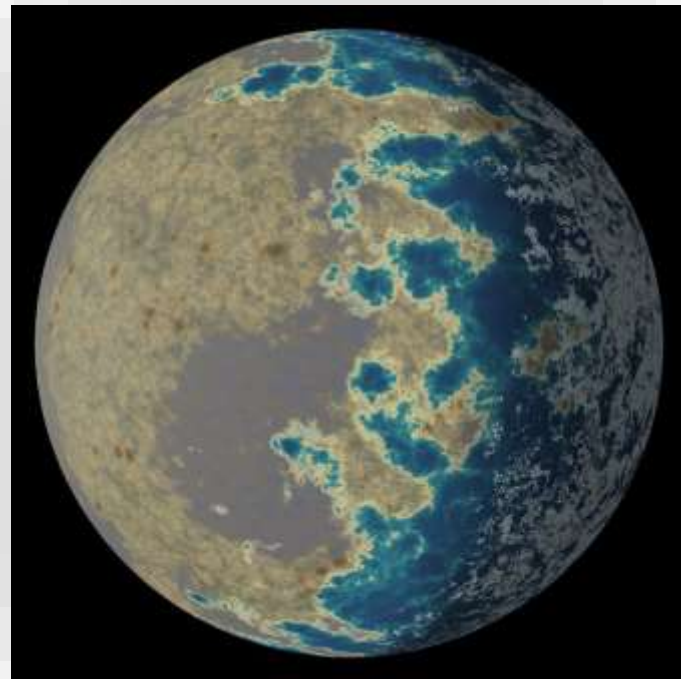
Water could exist on Proxima b, but the planet's surface (imagined here) may be blasted by radiation from its glaring red sun.

ESO/M. Auro



Earth-like planet found orbiting our nearest stellar neighbor

By Daniel Clery | Aug. 24, 2016, 1:00 PM



P

P



HOW TO JOIN

a

P I L

a

HOW TO WATCH THE ARCHIVE

