

1 ABOUT CLPX SNOW PIT DATA







Investigators for the Cold Land Processes Field Experiment (CLPX) dug and took measurements from approximately 2,000 snow pits as part of the CLPX project. The majority of the snow pit data were collected within the Intensive Study Areas (ISAs) inside each Meso-cell Study Area (MSA), during the four Intensive Observation Periods (IOPs). In addition, snow pit data were collected across the North Park MSA and in several other areas as part of other field collection efforts.


Although different investigators collected snow pit data for different purposes and in different locations, they all followed the same data sampling protocol and all snow pit data are presented in the same format.

1.1 Snow Pit Maps

This section provides snow pit location maps within each regional CLPX study area. The legend provides symbols and information regarding snow pit type, location, descriptions, and links to select data and documentation.

Table 1. CLPX Snow Pit Map Legend

Snow Pit Symbol	Snow Pit Type	Snow Pit Description
	ISA Snow Pits	16 pits at the same location within each ISA during each of the four IOPs
	IOP1 (22 February 2002) "Gamma" Snow Pits	Pits sampled to coincide with airborne gamma measurements. Part of the ISA Snow Pit Measurements collection.
	IOP2 (28 March 2002) "Gamma" Snow Pits	Pits sampled to coincide with airborne gamma measurements. Part of the ISA Snow Pit Measurements collection.
	IOP3 (22 February 2003) "Gamma" Snow Pits	Pits sampled to coincide with airborne gamma measurements. Part of the ISA Snow Pit Measurements collection.
	IOP4 (28 March 2003) "Gamma" Snow Pits	Pits sampled to coincide with airborne gamma measurements. Part of the ISA Snow Pit Measurements collection.
	Main Meteorological Snow Pits	Snow pits sampled monthly from December 2002 through June 2003 near the main meteorological stations.

	<p>Snow Pits in the LSOS</p>	<p>Snow pits sampled during the IOPs as part of the Local Scale Observation Site (LSOS) Snow Measurements, and measured periodically from November 2002 through March 2003 in association with the Ground-Based Microwave Radiometer data collection.</p>
---	------------------------------	---

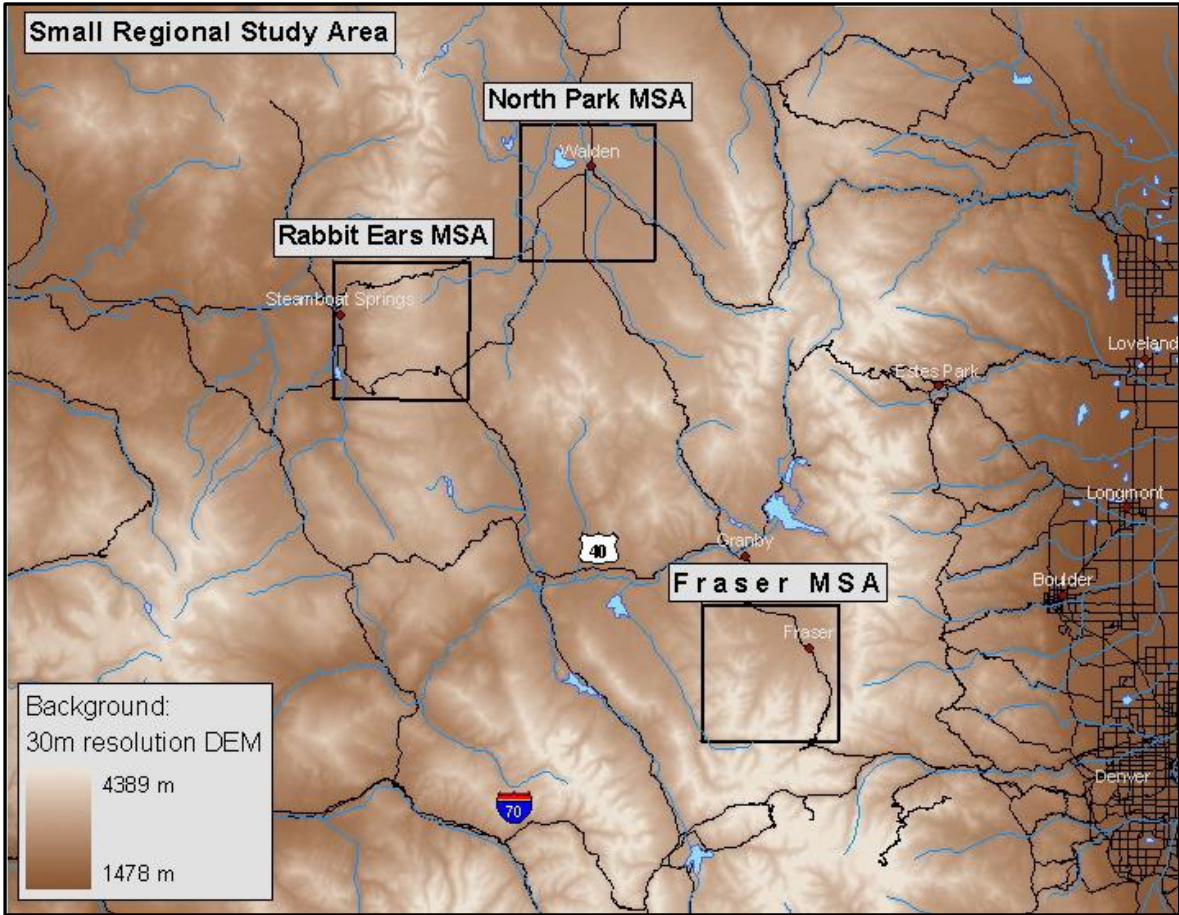


Figure 1. CLPX Small Regional Study Area Map

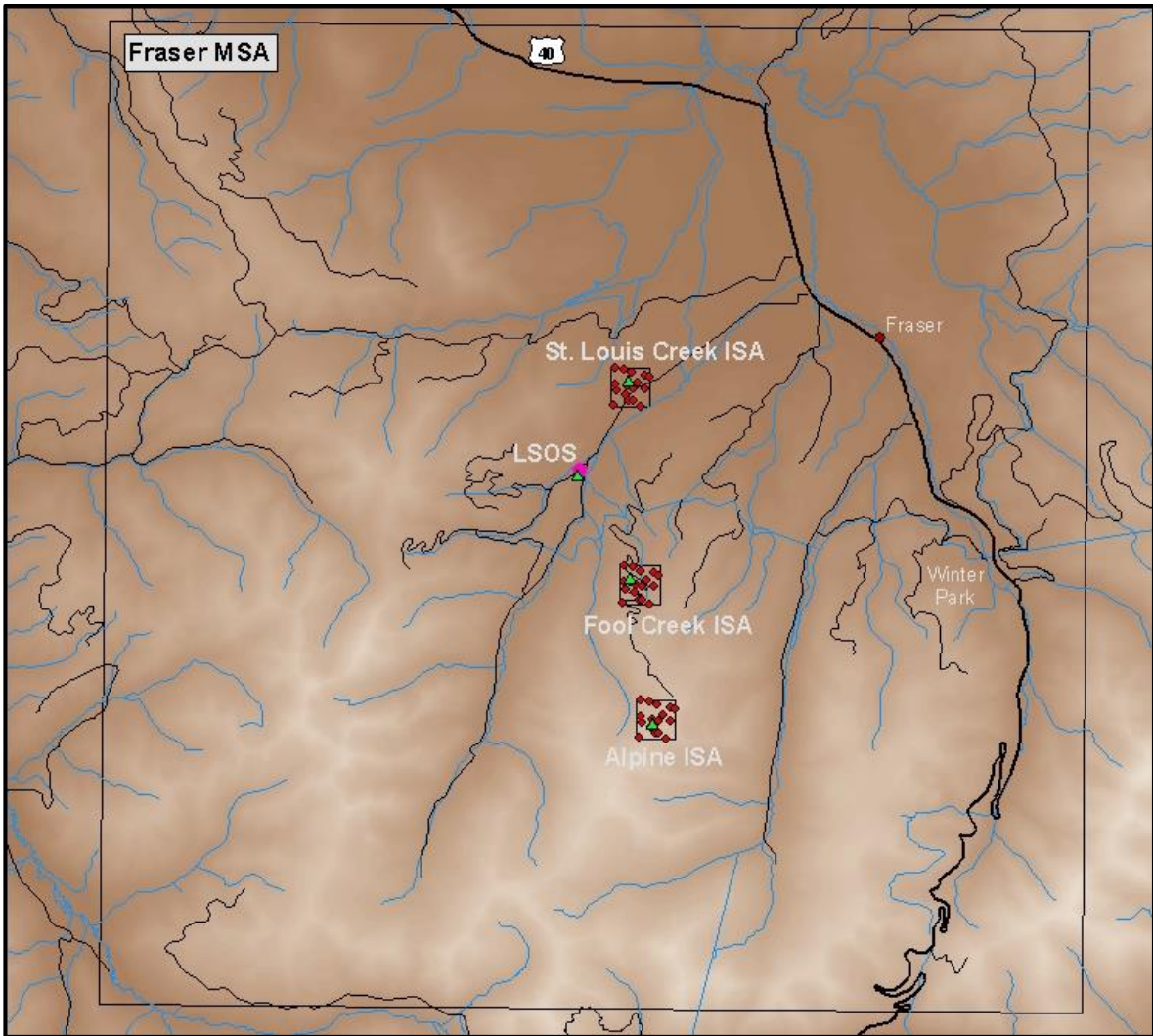


Figure 2. Fraser MSA Snow Pit Map

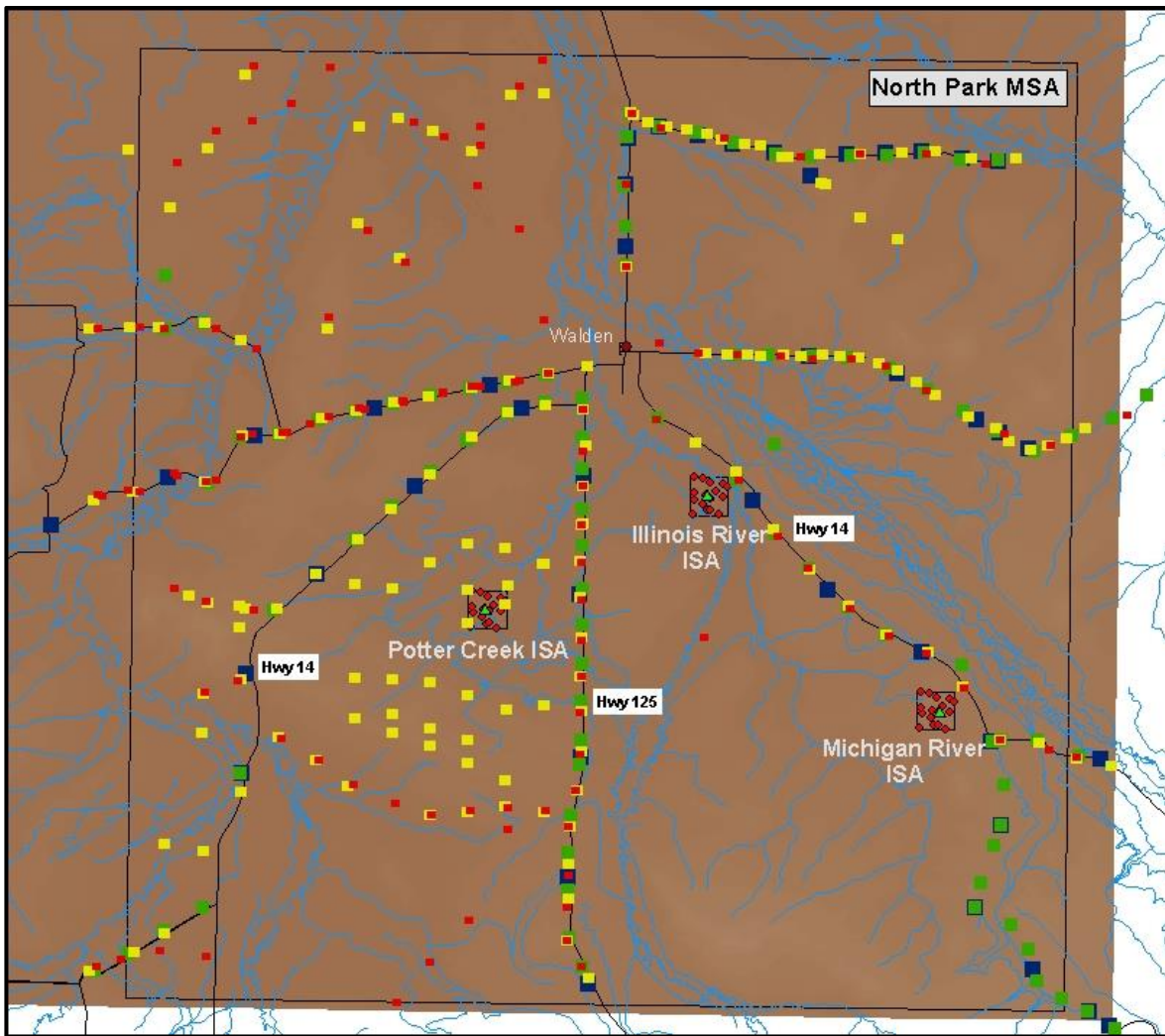


Figure 3. North Park MSA Snow Pit Map. See Figure 6 for details on Intensive Study Area design.

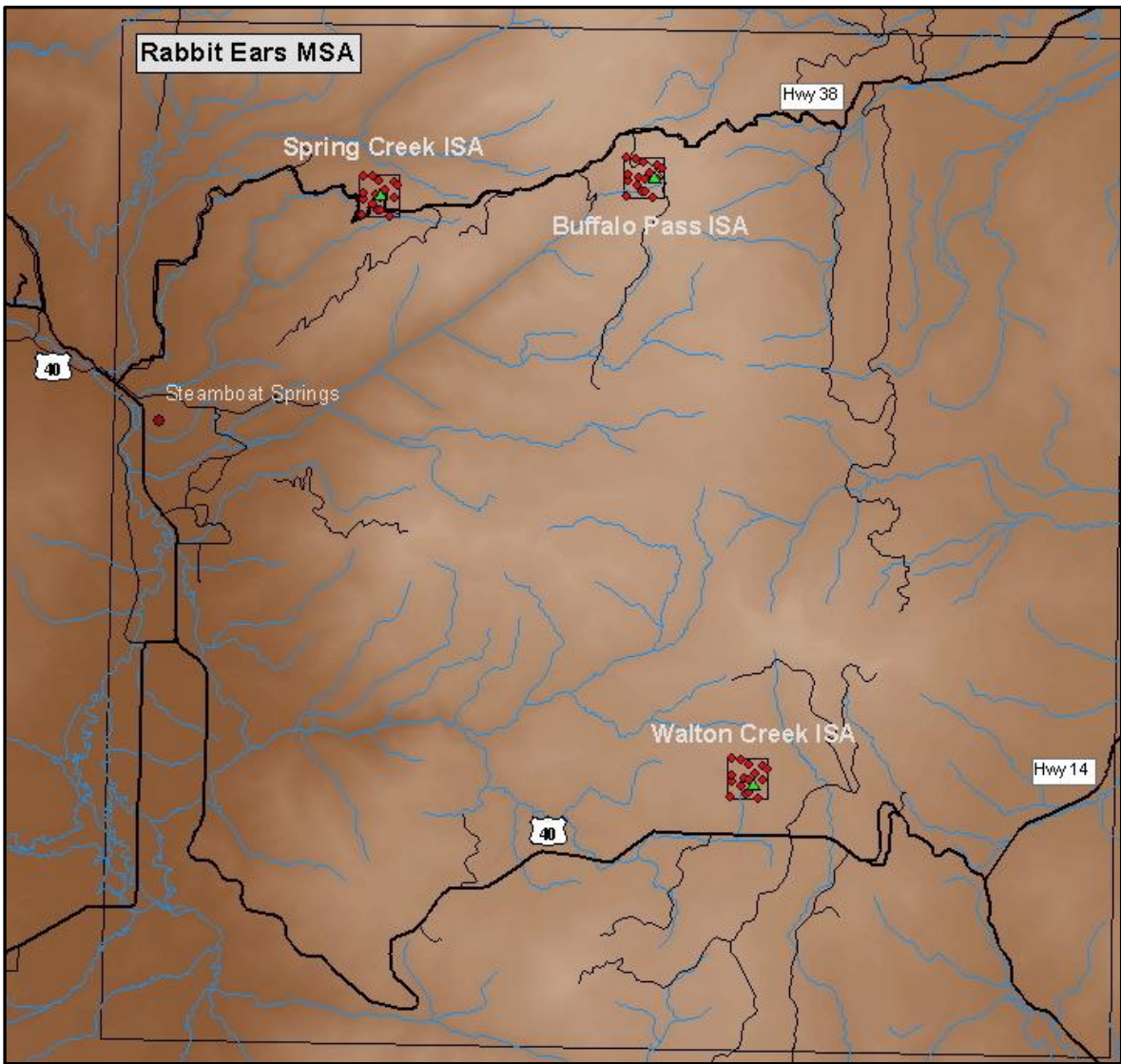


Figure 4. Rabbit Ears MSA Snow Pit Map. See Figure 6 for details on Intensive Study Area design.

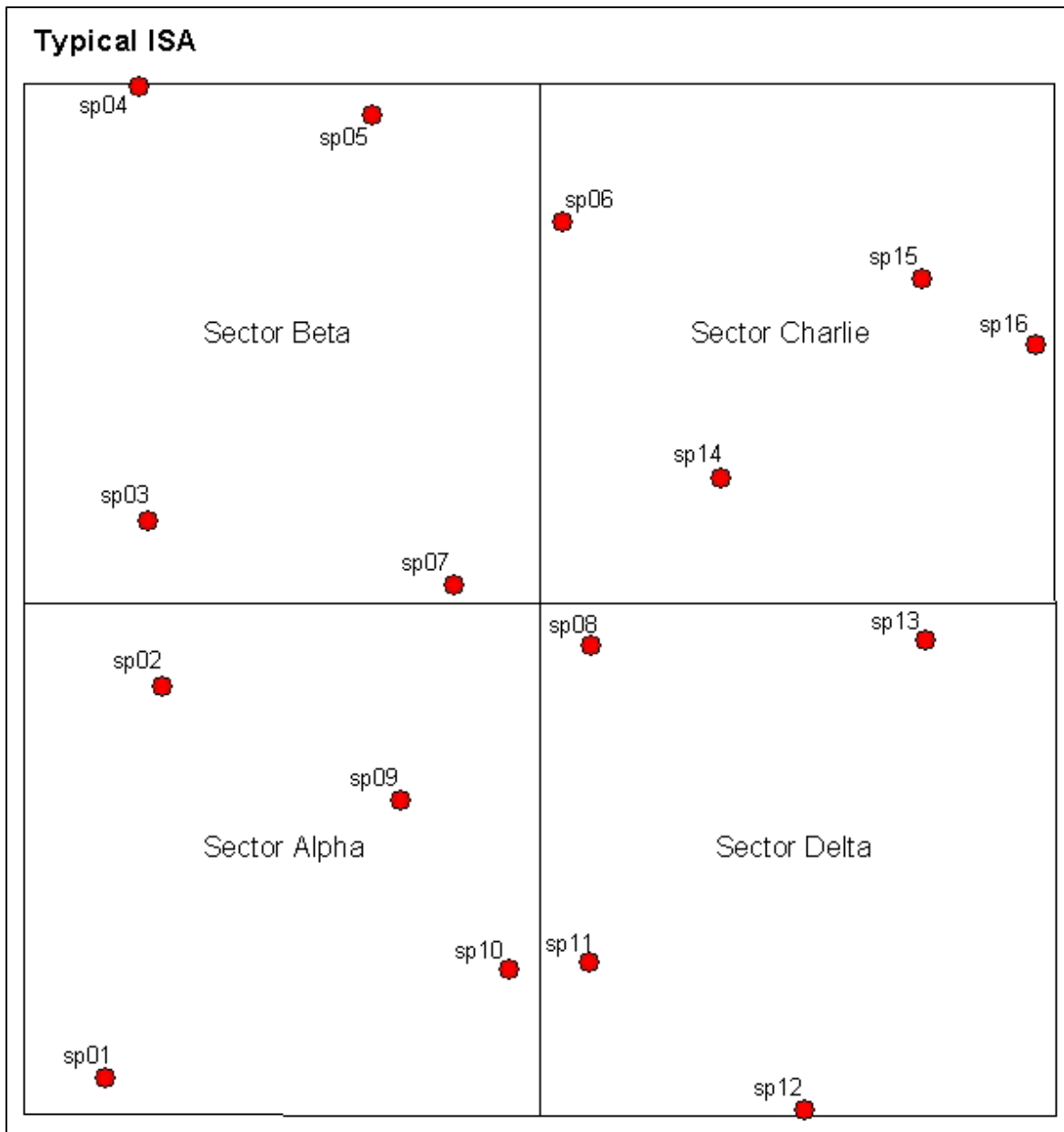


Figure 5. Locations of snow pits within each intensive study area (ISA) marked by red dots.

2 DOCUMENT INFORMATION

2.1 Publication Date

09 January 2015

2.2 Date Last Updated

06 April 2021