

U. S. DEPARTMENT OF COMMERCE • WEATHER BUREAU • WASHINGTON D. C.

WEATHER BUREAU TECHNICAL NOTE 2-NSSL23

PURPOSES & PROGRAMS OF THE  
NATIONAL SEVERE STORMS  
LABORATORY,  
NORMAN, OKLAHOMA



**N S S L**

NATIONAL SEVERE STORMS LABORATORY  
REPORT NUMBER 23 DECEMBER 1964

## NATIONAL SEVERE STORMS LABORATORY REPORTS

The National Severe Storms Laboratory, Norman, Oklahoma, in cooperation with other government groups, and with units of commerce and education, seeks to increase understanding of severe local storms, to improve methods for detecting these storms and for measuring associated meteorological parameters, and to promote the development and applications of weather radar.

Reports by the cooperating groups are printed in this series to facilitate prompt communication of information to vitally interested parties. These reports are not formal scientific publications.

The NSSL reports continue the sequence established by the U.S. Weather Bureau National Severe Storms Project, Kansas City, Missouri.

- No. 1 National Severe Storms Project Objectives and Basic Design. Staff, Nssp. March 1961.
- No. 2 The Development of Aircraft Investigations of Squall Lines from 1956 - 1960. B. B. Goddard.
- No. 3 Instability Lines and Their Environments as Shown by Aircraft Soundings and Quasi-Horizontal Traverses. D. T. Williams. February 1962.
- No. 4 On the Mechanics of the Tornado. J. R. Fulks. February 1962.
- No. 5 A Summary of Field Operations and Data Collection by the National Severe Storms Project in Spring 1961. J. T. Lee. March 1962.
- No. 6 Index to the Nssp Surface Network. T. Fujita. April 1962.
- No. 7 The Vertical Structure of Three Dry Lines as Revealed by Aircraft Traverses. E. L. McGuire. April 1962.
- No. 8 Radar Observations of a Tornado Thunderstorm in Vertical Section. Ralph J. Donaldson, Jr. April 1962.
- No. 9 Dynamics of Severe Convective Storms. Chester W. Newton. July 1962.
- No. 10 Some Measured Characteristics of Severe Storm Turbulence. Roy Steiner and Richard H. Rhyne. July 1962.
- No. 11 A Study of the Kinematic Properties of Certain Small-Scale Systems. D. T. Williams. October 1962.
- No. 12 Analysis of the Severe Weather Factor in Automatic Control of Air Route Traffic. W. Boynton Beckwith. December 1962.
- No. 13 500-Kc./Sec. Sferics Studies in Severe Storms. Douglas A. Kohl and John E. Miller. April 1963.
- No. 14 Field Operations of the National Severe Storms Project in Spring 1962. L. D. Sanders. May 1963.
- No. 15 Penetrations of Thunderstorms by an Aircraft Flying at Supersonic Speeds. G. P. Roys. Radar Photographs and Gust Loads in Three Storms of 1961 Rough Rider. Paul W. J. Schumacher. May 1963.
- No. 16 Analysis of Selected Aircraft Data from Nssp Operations, 1962. T. Fujita. May 1963.
- No. 17 Analysis Methods for Small-Scale Surface Network Data. D. T. Williams. August 1963.
- No. 18 The Thunderstorm Wake of May 4, 1961. D. T. Williams. August 1963.
- No. 19 Free-Water Content Measurement and High-Speed Droplet Photography During Penetration of Great Plains Thunderstorms. G. P. Roys. January 1964,
- No. 20 Field Operations of the National Severe Storms Project in Spring 1963. J. T. Lee, L.D. Sanders, and D. T. Williams. January 1964
- No. 21 On the Motion and Predictability of Convective Systems as Related to the Upper Winds in a Case of Small Turning of Wind with Height. James C. Fankhauser. January 1964.
- No. 22 Movement and Development Patterns of Convective Storms and Forecasting the Probability of Storm Passage at a Given Location. Chester W. Newton and James C. Fankhauser. January 1964

U. S. DEPARTMENT OF COMMERCE  
Luther H. Hodges, Secretary  
WEATHER BUREAU  
Robert M. White, Chief

NATIONAL SEVERE STORMS LABORATORY

REPORT NO. 23

**Purposes and Programs of the  
National Severe Storms Laboratory  
Norman, Oklahoma**

by

Edwin Kessler  
Director



Washington, D. C.  
December 1964

## TABLE OF CONTENTS

Section	Title	Page
1.	Introduction	1
2.	Objectives and Program Guidelines	1
3.	Organization	2
4.	Programs	5
	A. Measurement of precipitation rate by radar	5
	B. Application to air traffic control of ground-based weather radar and sferics equipment	7
	C. Doppler radar	7
	D. Wind and water distributions and energy conversion and transport processes	7
	E. Statistical characterization of weather patterns, and implications	9
	F. Meteorological systems analysis and advanced instrumentation	9
5.	Publication of Results	11
6.	References	12
	Appendix - Mesoscale networks of surface observing stations	15

PURPOSES AND PROGRAM OF THE  
U.S. WEATHER BUREAU NATIONAL SEVERE STORMS LABORATORY  
NORMAN, OKLAHOMA

Edwin Kessler  
Director, National Severe Storms Laboratory

## 1. INTRODUCTION

The needs for more accurate, timely, and meaningful weather information grow as production, transportation, and communication processes become more intricate and more weather-sensitive. Aviators, agriculturists, builders, shippers, and insurers are among those who increasingly depend on information concerning the present and forecast occurrences of storm hazards.

Development of the national weather system to meet national needs efficiently depends on the application of findings of basic and applied meteorological research. Modern technology has produced numerous research tools whose coordinated-use should contribute importantly to improved understanding of the meteorological processes associated with severe storm development, to more accurate weather analysis and forecasting, and to eventual beneficial modification or control of weather including severe storms.

The National Severe Storms Laboratory aims to extend our understanding of severe convective phenomena such as tornadoes, hailstorms, and heavy rains. For the study of these phenomena, modern weather radar is an indispensable tool, and considerable specialization in techniques of radar data display and processing, including synthesis of radar data with other kinds of information, is required. It is natural, therefore, that the Laboratory also serve the Weather Bureau as a research facility for development and applications of radar to general meteorology and the national weather system.

## 2. OBJECTIVES AND PROGRAM GUIDELINES

The Laboratory objectives in the national interest are:

1. To gain new knowledge of the morphology and dynamics of severe storms, such as heavy rains, squall lines, thunderstorms and tornadoes, and thereby to contribute to the development of improved forecasting, and understanding.

2. To discover improved methods for collecting, analyzing, and processing severe storm data, and to stimulate development of equipment, especially radar equipment, holding promise of expanded capabilities.

3. To study operating configurations of men and equipment, and thereby to contribute to the design of improved storm observing and reporting systems wherein sensors, processors and communications facilities are efficiently meshed to provide timely, accurate information to the host of users.

The National Severe Storms Laboratory has objectives of investigation formerly addressed by the National Severe Storms Project at Kansas City, Mo. and by the Weather Radar Laboratory at Norman, Okla., and will emphasize the applications of radar and aircraft probes, and surface networks of closely spaced automatic recording stations for these studies. A great variety of severe weather occurs near Norman, and the co-located University of Oklahoma and its Atmospheric Research Laboratory will furnish important and unique support to the Laboratory mission (figure 1).

The shape of the NSSL program at a particular time will naturally be determined by the interests and capabilities of participating personnel. The national problem of skilled manpower shortage will certainly be reflected in the scope of the program. A few highly qualified specialists will be retained as consultants, and every reasonable effort will be made to attract capable people with interests in all the physical and mathematical disciplines needed to advance meteorological frontiers.

The decision to work on a particular task will be based on considerations of the importance of the problem, the reasonableness of the proposed approach to a solution, and the adequacy of available resources to secure a desired useful result.

Financial resources, equipment, and facilities authorized for NSSL management will be allocated to in-house or contractor control on a basis of estimated benefits per unit expenditure. Many intangibles enter such estimates. Government, university, and commercial enterprises have distinctive characteristics which may determine the type of facility best suited to particular tasks.

### 3. ORGANIZATION

Organization of the National Severe Storms Laboratory is outlined in figure 2. The Laboratory is responsible to the Office of Meteorological Research, and will receive guidance from consultants drawn from institutions of government, commerce, and education. The interests of other agencies will be made known through the office of the Chief, U.S. Weather Bureau, and by contacts at other levels.

The activities of research and equipment development shown in figure 2 are the Laboratory's raison d'etre. All other activities are supporting and their value will be judged in terms of their support effectiveness



Figure 1. Aerial view showing University of Oklahoma Research Park, Norman, Oklahoma, with buildings housing the USWB's National Severe Storms Laboratory, and other facilities.

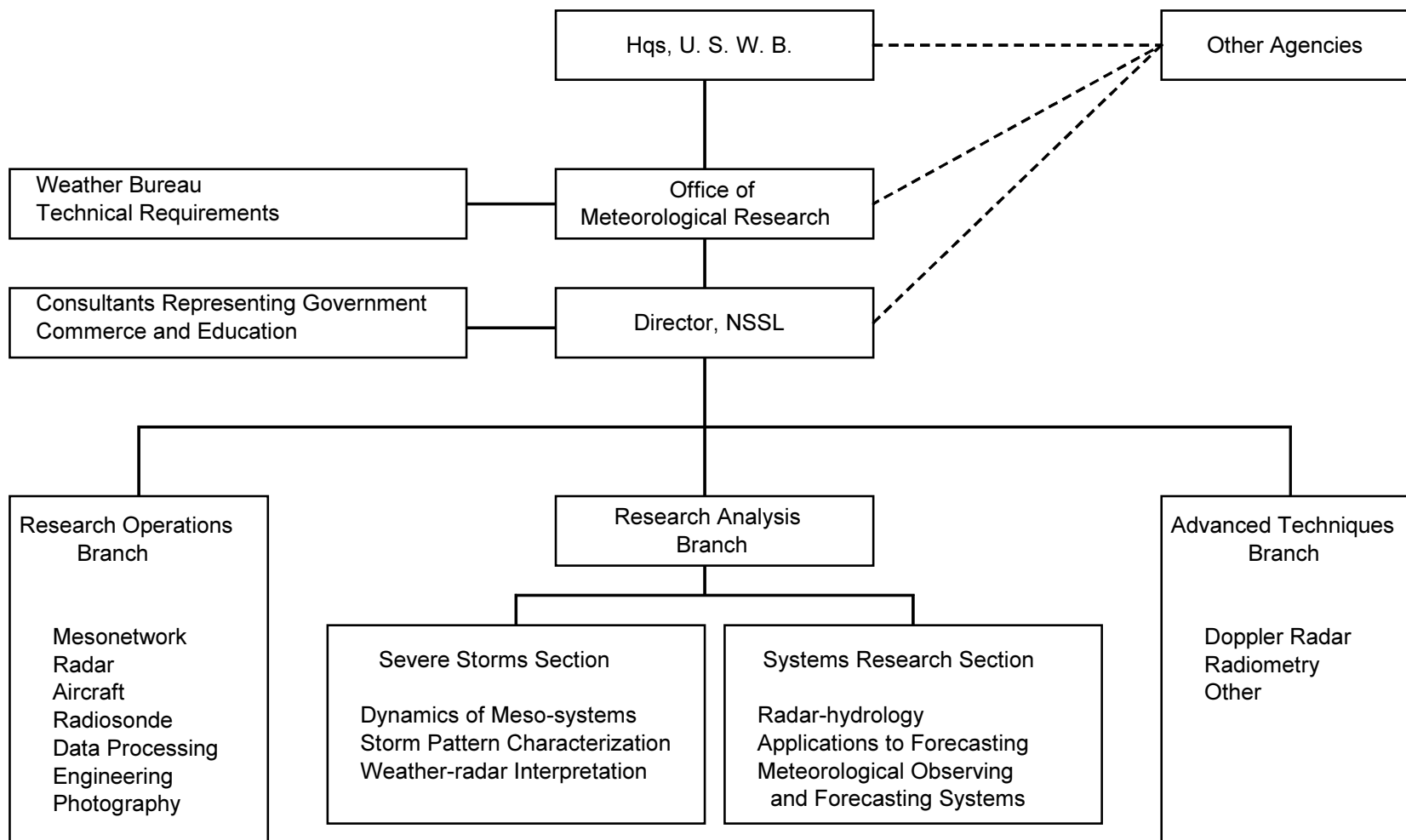


Figure 2. General organization of NSSL, Norman, Oklahoma. In practice, it is common for single individuals to participate in different activities



Not all of the activities suggested by figure 2 will be fully staffed by NSSL employees. Some activities may be staffed by contractors or by the employees of other government agencies. Some work may be funded by transfer of monies to NSSL management from other agencies.

#### 4. PROGRAM

During past seasons, weather reconnaissance and weather penetration aircraft of cooperating agencies and of the U.S. Weather Bureau have been used with observations of radar and a network of closely-spaced surface observation stations, and with synoptic data, to describe atmospheric states and physical processes associated with thunderstorms and related weather systems. Findings and conclusions have been documented in the reports of the National Severe Storms Project [1-19 and others, in press]; these are important to the planning of future work.

The coordinated use of modern observing equipment will continue to be emphasized at NSSL; important and difficult tasks will be the design of experiments to take greatest possible advantage of complementary observational capabilities.

Of course, it is not possible at the outset to map the forthcoming program in detail. Foci of effort will be determined by need and the availability of good ideas and sufficient resources. Some problem areas which may receive active attention at NSSL are discussed briefly in the following sections:

A. Measurement of precipitation rate by radar - This task requires correlation between radar and rain gage observations and will utilize digital computers for radar data processing (see fig.3) and assembly of rain gage data from stations maintained by the Laboratory\* and the Agricultural Research Service, Chickasha, Okla. Austin [20], Wilson [21] and others have demonstrated the potential accuracy of the WSR-57 for rainfall measurements in widespread precipitation. Their works must be extended to include many cases of highly variable precipitation. It is expected that radar can provide information of rainfall occurrences so timely and accurate that flash-flood forecasting will be greatly improved, with resultant saving of lives and property and more economical utilization of reservoirs and hydroelectric facilities. The tasks of applying precipitation rate-radar echo relationships to problems of stream flow and ground water are within the jurisdiction of the Office of Hydrology, U.S. Weather Bureau; the Corps of Engineers, U.S. Army; and the Department of Agriculture.

Accurate measurement of precipitation rate on a small scale should also contribute to establishment of criteria for severe storm identification and to analysis of the water and

---

In spring 1964, a 47-station network for comprehensive mesoscale weather observations; see Appendix.

In spring 1964, 173 recording rain gages over 1128 sq.mi. for rainfall-runoff studies along the Washita River and tributaries; see Appendix.

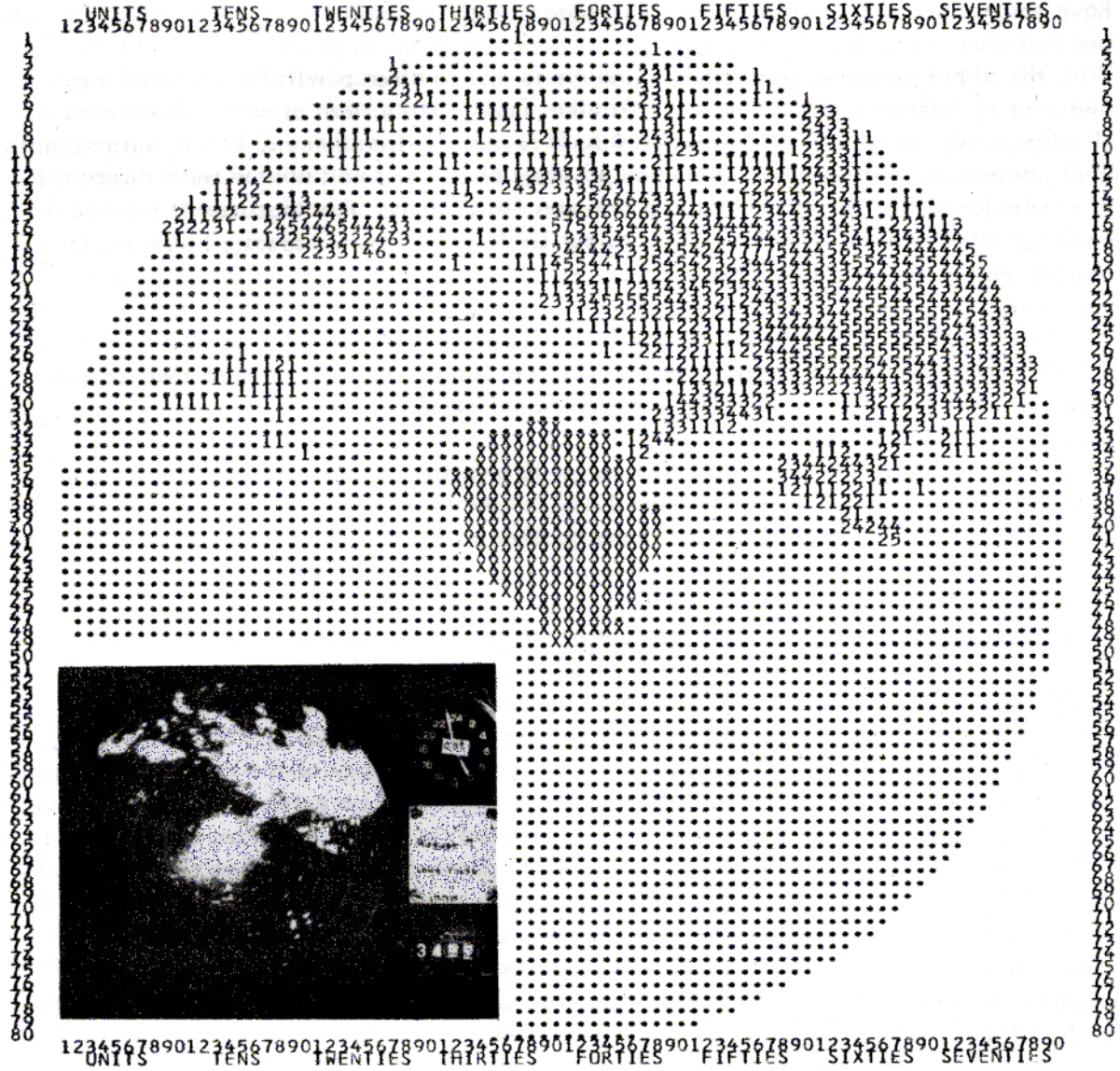


Figure 3. Digitized distribution of radar echo intensities within 100 nm. of Norman, Okla., August 7, 1963, as produced by a computer from series of WSR-57 radar observations. A photograph of the plan position indicator with high radar sensitivity is also shown.

energy budget of storms: knowledge of budget parameters is essential to the understanding of storm mechanics.

B. Application to air traffic control of ground-based weather radar and sferics equipment - Incidents associated with flights of aircraft in the vicinity of thunderstorms have emphasized the need for more knowledge of associations between thunderstorm echoes and turbulence and improved application of observing tools to problems of air safety. With the aid of ground-based radars, high-performance aircraft will be vectored through and near thunderstorm areas while sferics counts and distributions of radar reflectivity are simultaneously recorded.\* These data should reveal the frequency distributions of significant parameters of atmospheric turbulence, electricity, and hail which are characteristic of particular altitudes, and of radar and sferics indications. Findings should provide a basis for rational estimation of the economic and human factors associated with flight through particular weather conditions and, thus, for operational decisions which incorporate these factors.

C. Doppler radar - Doppler radar [22] can measure the radial speeds of scattering elements, hence can be a basis for deducing much information about winds [23], and probably holds the greatest potential of all the new tools for expanding man's knowledge of wind fields accompanying precipitating weather systems. Doppler data can be used to infer distributions of precipitation particle size, and contribute to understanding of the microphysical processes fundamental to precipitation production [24, 25]. Recent applications of Doppler have contributed to better understanding of the nature of radar echoes from invisible sources, the radar "angels," and suggest advanced techniques which may provide a needed breakthrough in the study of clear-air turbulence [25, 26].

The width of the Doppler spectrum from precipitation depends on the variation of radial speeds among the scattering particles and may be a measure of aircraft-sensed turbulence; an R-meter [27] attachment permits a conventional radar to estimate spectrum width also [28]. NSSL will use aircraft with Doppler and conventional radars to search for a suitable means for identifying locations of severe turbulence quickly and economically. Research success would be quickly translated into benefits for aviation meteorology.

The application of Doppler techniques to meteorology is rather new and special signal-processing techniques are necessary; at present there are very few, Doppler weather facilities. Because of the great potential of Doppler radar, NSSL is developing an installation for use by its staff and other meteorologists (fig. 4 and [29]).

D. Wind and water distributions and energy conversion and transport processes - Our capabilities for forecasting and controlling severe storms will be advanced by knowledge of associated air circulations and energy transformation processes; this requires that observations be considered in the light of fundamental theories. Many means of

---

Of course, even high-performance aircraft must be guided to avoid areas where the a priori probability of extremely severe weather is judged to be high.



Figure 4. Mobile X-Band pulsed Doppler radar at NSSL. At present, peak power is 6 kw. and the pulse repetition frequency is variable to 10 kc./sec. half-power beamwidth is 1.39

observation must be used, because significant storm details are distributed on small space and time scales. Aircraft should provide photographs, from which the shape of clouds can be accurately mapped, and measurements of temperature, pressure, wind, and water content (fig. 5); radar reflectivity data can be a basis for estimates of 3-dimensional distributions of precipitation content; the observations of surface stations separated by mesoscale lengths provides rainfall and wind data essential to water budget considerations, and the surface distributions of pressure and temperature. These considerations have been discussed in detail by Braham [30], Atlas [31], and Fujita [32], for example.

At NSSL, a great part of the program will be devoted to developing improved syntheses of severe storm observations and theories. In this regard, the ideas of Lhermitte [23], Browning [33], Kessler [34], and Ogura [35] suggest important possibilities.

E. Statistical characterization of weather patterns, and implications - The development of applications for radar-derived and satellite-derived information has been slowed in part by difficulties of objective pattern description. The availability of large high speed digital computers now permits advances in this important area [35, 36, 37, 38]. For example, objective measures of pattern bandedness and orientation, the characteristic length of pattern elements, and pattern motion and development can all be determined with computer-performed correlation routines. The average radar-echo intensity, the intensity variance, and the proportional area covered by echoes have been shown to discriminate among radar echo patterns. Since pattern parameters are correlated with each other! not all are essential to a comprehensive description of pattern statistics. The description of a weather pattern by a minimum number of variables is important to the economical communication of weather intelligence.

The relationship of radar echo and satellite photograph pattern parameters to severe storm occurrences and to synoptic weather features is important to the coordinated use of the conventional observing tools with the new. Studies like [38] which relate the predictability of scale weather patterns to other pattern descriptors should be extended. Techniques such as multiple discriminant analysis [39] should be used in this work.

Other important problems concern relationships among statistical properties of storm patterns and the associated turbulence, momentum and energy transport and conversion processes, and the large scale flow.

F. Meteorological systems analysis and advanced instrumentation - Studies of various configurations of men and equipment are necessary to incorporate new techniques for observing and reporting storms into effective operational routines. System studies may be undertaken at the request of the Systems Development Office and other sponsoring organizations and in partnership with responsible groups; in some cases, Laboratory personnel may have consulting roles. Reports of such studies will include recommendations concerning needs for specialized equipment ([41- 42, 43, 44], for example) for operational data collecting, processing, and communicating.

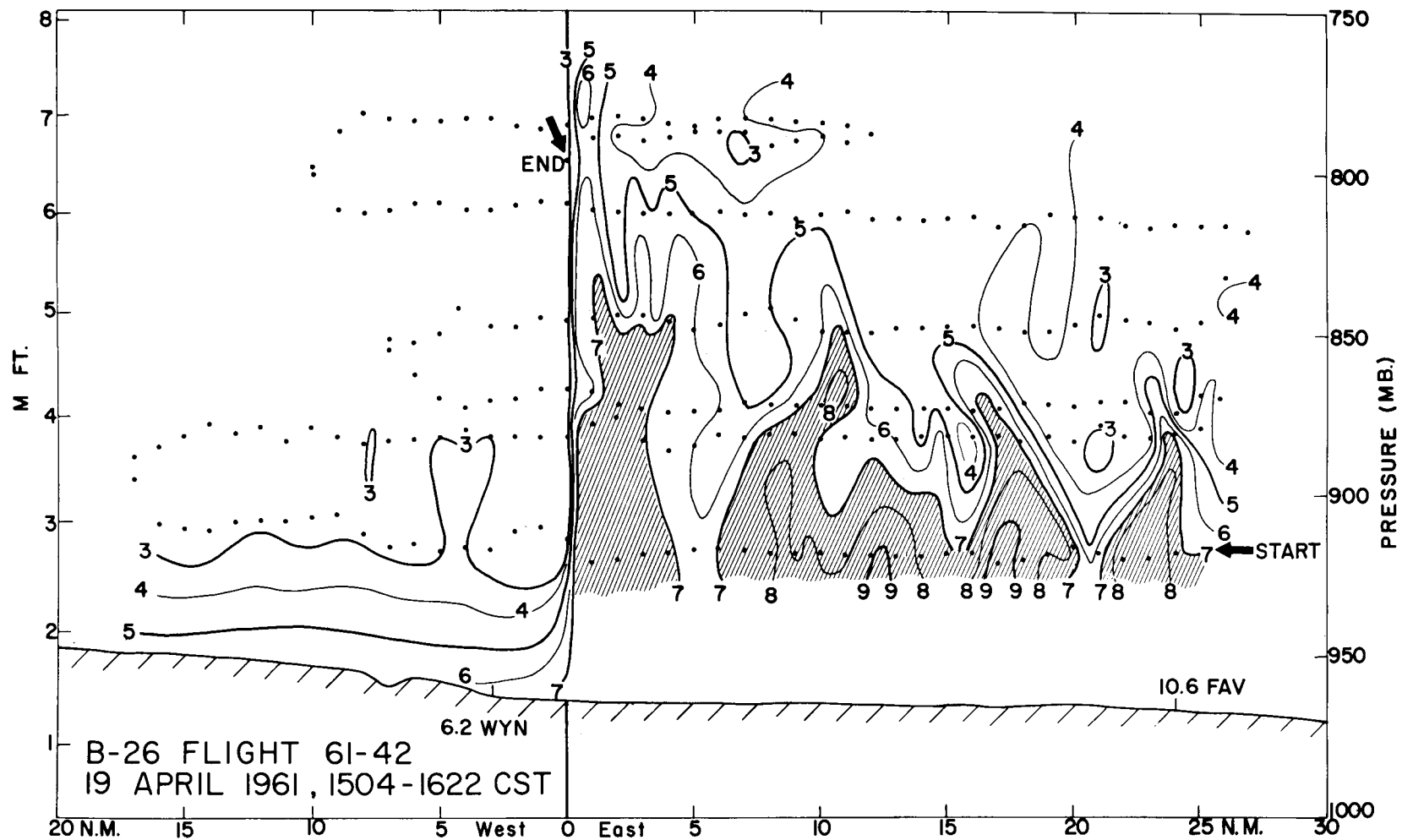


Figure 5. The importance of aircraft observations is illustrated by this cross-section of the water vapor distribution across a dry line in northwestern Oklahoma. The locations of observations made along the aircraft flight path are indicated by dots. The vertical orientation of the zone of abrupt moisture change, its extremely narrow horizontal extent, and details of the moisture distribution in the humid air could not be delineated except from aircraft measurements.

In the research programs, much data may be usefully reduced by hand and processed in established facilities, but development and procurement of some specialized equipment will probably also be necessary. The effective combination for research purposes of data from aircraft/ radar and mesonet network sources, and the speedy, comprehensive analysis and recording of Doppler radar spectra, for example, may depend on equipment development or procurement by the Laboratory.

## 5. PUBLICATION OF RESULTS

Important results of NSSL investigations will be offered as soon as possible after their completion for publication in scientific journals. The prepublication series represented by this report will be used for disseminating information more rapidly and in more detail than is practicable via formal publication.

## REFERENCES

1. Staff of NSSP, "National Severe Storms Project Objectives and Basic Design," NNSP Report No. 1, U.S. Weather Bureau, 1961, 16 pp.
2. Goddard, B. B., "The Development of Aircraft Investigations of Squall Lines from 1956-1960," NNSP Report No.2, U.S. Weather Bureau, 1962, 34 pp.
3. Williams, D. T., "Instability Lines and Their Environments as Shown by Aircraft Soundings and Quasi- horizontal Traverses," NNSP No.3, U.S. Weather Bureau, 1962, 15 pp.
4. Fulks, J. R., "On the Mechanics of the Tornado," NNSP Report No.4, U. S. Weather Bureau, 1962, 33 pp.
5. Lee, J. T., "A Summary of Field Operations and Data Collection by the National Severe Storms Project in Spring 1961," NNSP Report No. 5, U.S. Weather Bureau, 1962, 47 pp.
6. Fujita, T., "Index to the NNSP Surface Network," NNSP Report No.6, U.S. Weather Bureau, 1962, 32 pp.
7. McGuire, E. L., "The Vertical Structure of Three Dry Lines as Revealed by Aircraft Traverses," NNSP Report No.7, U.S. Weather Bureau, 1962, 10 pp.
8. Donaldson, Ralph J., Jr., "Radar Observations of a Tornado Thunderstorm in Vertical Section," NNSP Report No.8, U.S. Weather Bureau, 1962, 21 pp.
9. Newton, C. W., "Dynamics of Severe Convective Storms," NNSP Report No.9, U.S. Weather Bureau, 1962, 44 pp.
10. Steiner, R. and Rhyne, R.H., "Some Measured Characteristics of Severe Storm Turbulence, NNSP Report No. 10, U.S. Weather Bureau, 1962, 17 pp.
11. Williams, D. T, "A Study of the Kinematic Properties of Certain Small Scale Systems," NNSP Report No.11, U.S. Weather Bureau, 1962, 22 pp.
12. Beckwith, W. B., "Analysis of the Severe Weather Factor in Automatic Control of Air Route Traffic," NNSP Report No. 12, U. S. Weather Bureau, 1962, 67 pp.
13. Kohl, D. A. and Miller, J. E., "500-kc/sec Sferics Studies in Severe Storms," NNSP Report No. 13, U.S. Weather Bureau, 1963, 36 pp.
14. Sanders, L. D. Field Operations of the NNSP in Spring 1962, NNSP Report No. 14, U.S. Weather Bureau, 1963, 71 pp.
15. Roys, G. P., "Penetration of Thunderstorms by an Aircraft Flying at Supersonic Speeds" and Schumacher, P. W. J., "Radar Photographs and Gust Loads in Three Storms of 1961 Rough Rider," these two studies combined in NNSP Report No. 15, U.S. Weather Bureau, 1963, 19 pp.
16. Fujita, T., "Analysis of Selected Aircraft Data from NNSP Operations, 1962" NNSP Report No.16, U.S. Weather Bureau, 1963, 29 pp.
17. Williams, D. T. I "Analysis Methods for Small Scale Surface Network Data," NNSP Report No. 17, U.S. Weather Bureau, 1963, 20 pp.



18. Williams, D. T., "The Thunderstorm Wake of May 4, 1961," NSSP Report No. 18, U. S. Weather Bureau, 1963, 23 pp.
19. Staff of NSSP, "Environmental and Thunderstorm Structures as Shown by National Severe Storms Project Observations in Spring 1960 and 1961," Monthly Weather Review, vol. 91, No. 6, June 1963, pp. 271-292.
20. Austin, P. M., "Radar Measurements of the Distribution of Precipitation in New England Storms," Proceedings 10th Weather Radar Conference, American Meteorological Society, Boston, Mass., 1963, pp. 247-254.
21. Wilson, J. W., "Evaluation of Precipitation Measurements with the WSR-57 Weather Radar," Journal of Applied Meteorology, vol. 3, No. 2, April 1964, pp. 164-174.
22. Barlow, E. J., "Doppler Radar," Proceedings of the Institute of Radio Engineers, Vol. 37, No. 4, April 1949, pp. 340-255.
23. Lhermitte, R. M., "Note on Wind Variability with Doppler Radar," Journal of Atmospheric Sciences, Vol. 19, No. 4, August 1962, pp. 343-346.
24. Lhermitte, R. M. and D. Atlas, "Doppler Fallspeed and Particle Growth in Stratiform Precipitation," Proceedings 10th Weather Radar Conference, American Meteorological Society, Boston, Mass., 1963, pp. 297-302.
25. Batton, L. J. and A. R. Kassander, Jr., "Experimental Pulsed Doppler Radar for Cloud Physics," collection of reprints in Annual Report to the National Science Foundation by the University of Arizona on Grant G-14087 (see also Proceedings 10th Weather Radar Conference), 1963.
26. Goyer, G. G. and R. Watson, "The Laser and Its Application to Meteorology," Bulletin of the American Meteorological Society, vol. 44, No. 9, September 1963, pp. 564-570.
27. Rutkowski, W. and Fleisher, A., "The R-Meter: An Instrument for Measuring Gustiness," Weather Radar Research Report No.24, Contract DA 36-039 SC71136, Massachusetts Institute of Technology, 1955, 8 pp.
28. Fleisher, A., "Some Spectra of Turbulence in the Free Atmosphere," Journal of Meteorology, Vol. 16, No. 2, April 1959, pp. 209-211.
29. Lhermitte, R. and Kessler, E., "An Experimental Pulse Doppler Radar for Severe Storm Investigations," Proceedings 1964 World Conference on Radio Meteorology incorporating 11th Weather Radar Conference, American Meteorological Society, Boston, Mass., 1964, pp. 304-309.
30. Braham, R. R., Jr., "The Water and Energy Budgets of the Thunderstorm and Their Relation to Thunderstorm Development," Journal of Meteorology, Vol. 9, No. 4, August 1952, pp. 227-242.
31. Atlas, D., "Radar Analysis of Severe Storms," Meteorological Monographs, vol. 5, No. 27, American Meteorological Society, Boston, Mass., 1963, pp. 177-220.
32. Fujita, T., "Analytical Mesometeorology: A Review," Meteorological Monographs, Vol. 5, No. 27, American Meteorological Society, Boston, Mass., 1963, pp. 77-125.

33. Browning, K. A., "The Basis of a General Model of the Airflow and Precipitation Trajectories within Persistent Convective Storms," paper presented at the 3rd Conference on Severe Local Storms, Urbana, Illinois, 1963.
34. Kessler, E., III, P. J. Feteris, E. A. Newburg and G. Wickham, "Relationships Between Tropical Precipitation and Kinematic Cloud Models," Reports No. 1-5, Travelers Research Center to the U.S. Army Electronics Research and Development Laboratory on Contract DA 36-039 SC 89099, 1962-1963.
35. Ogura, Y., "A Review of Numerical Modeling Research on Small Scale Convection in the Atmosphere," Meteorological Monographs, vol. 5, No. 27, American Meteorological Society, Boston, Mass., 1963, pp. 65-76.
36. Epstein, E. S. and Loese, John A., "Application of Two Dimensional Spectral Analysis to the Quantification of Satellite Cloud Photographs," Journal of Meteorology, vol. 2, No. 5, October 1963, pp. 629-644.
37. Kessler, E., III and J. A. Russo, Jr., "A Program for the Assembly and Display of Radar-echo Distributions," Journal of Applied Meteorology, vol. 2, No. 4, August 1963, pp. 582-593.
38. Kessler, E., III and J. A. Russo, Jr., "Statistical Properties of Weather Radar Echoes," Proceedings 10th Weather Radar Conference, American Meteorological Society, Boston, Mass., 1963, pp. 25-33.
39. Mach, R. E., "Research on the Processing of Satellite Photography by Digital Techniques," Final report by International Business Machines Corp. to Air Force Cambridge Research Laboratories on Contract No. AF 19(604) 8432, 1952, 95 pp.
40. Miller, R. G., "Statistical Prediction by Discriminant Analysis," Meteorological Monographs, vol. 4, No. 25, American Meteorological Society, Boston, Mass., 1962, 54 pp.
41. Atlas, D., "Storm Radar Data Processor Observes a Tornado," Bulletin of the American Meteorological Society, vol. 44, No. 1, January 1963, pp. 44-45.
42. Collis, R. T. H., "A Radar Rainfall Integrator," Proceedings of the 10th Weather Radar Conference, American Meteorological Society, Boston, Mass., 1963, pp. 389-396.
43. Motorola, Inc., "Design Plan for an Automatic Cloud Measuring Indicator," Report to U.S. Army Signal Research and Development Laboratory, Fort Monmouth, N. J. on Contract No. DA 36-039 SC 90825, 1962, pp. 95.
44. Rabinow Engineering Co., "Operation and Adjustment Manual. Weather Radar Pattern Converter," Report to Federal Aviation Agency on Contract FAA/BRD-197, 1961, 25 pp.

## APPENDIX

### Meso-scale Networks of Surface Observing Stations

The network shown in figure A1 consists of 47 surface recording stations extending from Norman, Okla., southwestward about 100 statute miles. Stations are spaced 10 to 15 mi. apart and continuously record pressure, temperature, relative humidity, precipitation, and wind speed and direction. Plans exist for instrumenting a 1500' television tower near Oklahoma City, and installing new stations along the north side of the present establishment. Network data are further augmented by rawinsonde ascents made serially at Fort Sill, at Will Rogers Field, and at Tinker Air Force Base, also shown in this figure. Other surface weather observations are available from Ardmore, Hobart, Clinton-Sherman AFB, Fort Sill, and Wichita Falls, Tex. Reports on severe weather are received from about 400 volunteer observers in the area who are supplied special reporting forms by NSSL.

Figure A2 shows the network of 173 recording rain gages operated all year by the Agricultural Research Service of the Department of Agriculture. These gages are spread over 1100 mi.<sup>2</sup> of the Washita River Watershed, where 12 stream gages are also operated. The 3-mi. spacing of the rain gages yields data only slightly coarser than the resolution of the radar.

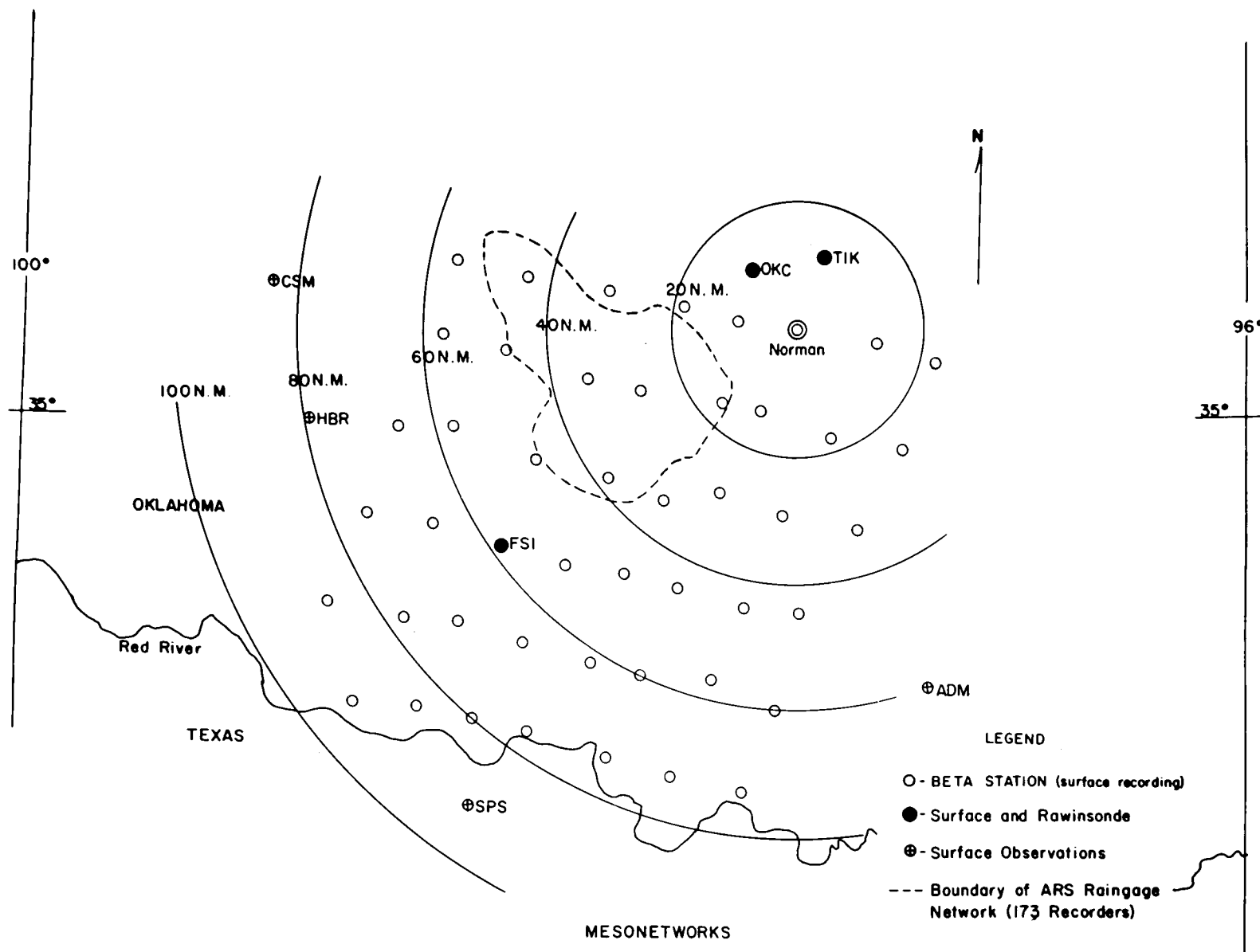


Figure A 1. Network of 47 surface recording stations operated by NSSL.

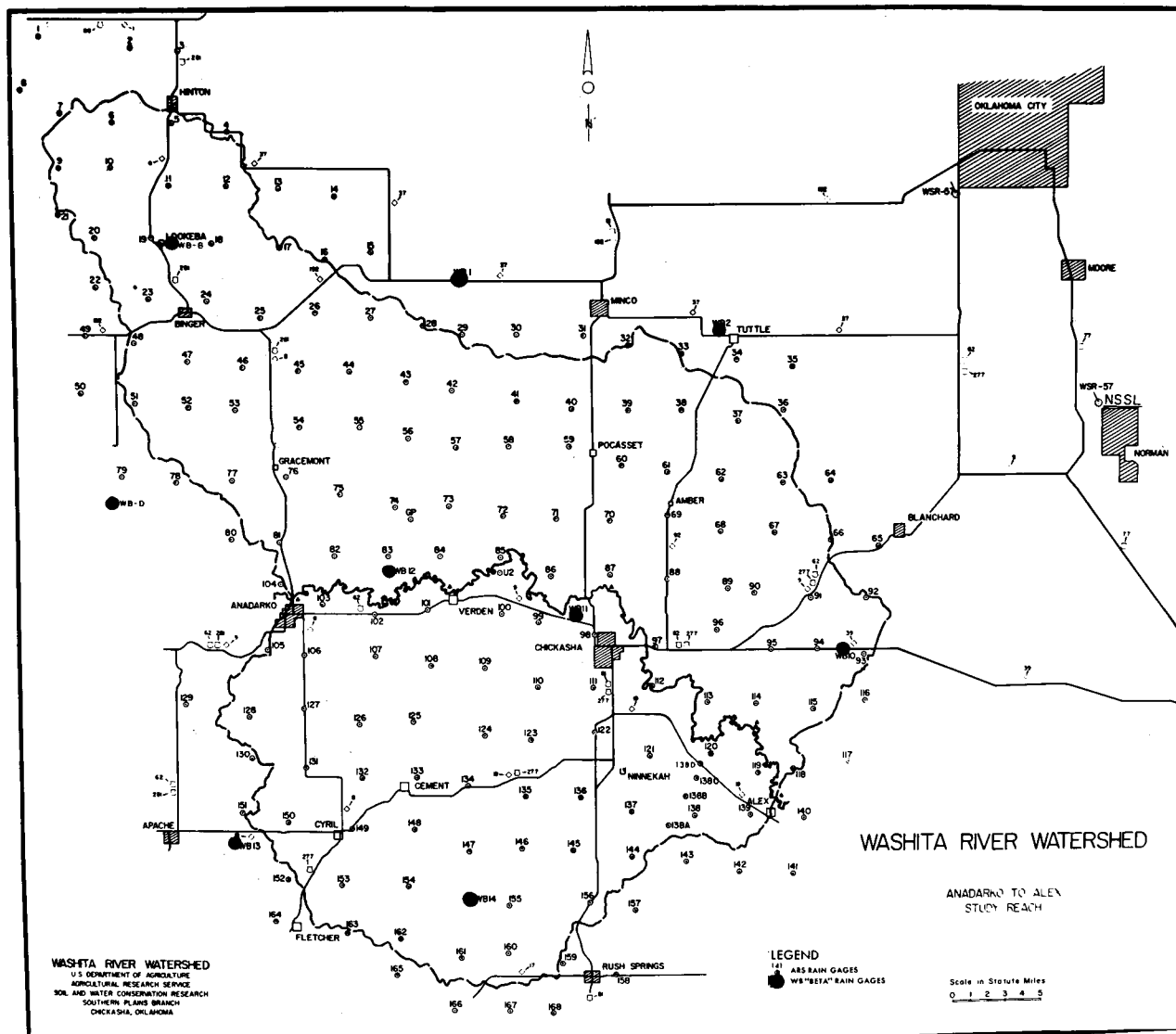


Figure A2. Network of 173 recording rain gages operated all year by the Agricultural Research Service of the Department of Agriculture.