



Volume 1-11
Technical Data Report
South Florida Region

Appendix IB

Demographic and Land Use Analysis
Miami-Dade County



This page intentionally left blank.

Table of Contents

- I. Demographic and Land Use Analysis..... IB-1
 - A. Population Characteristics and Their Implications for Evacuation Dynamics..... IB-1
 - 1. Overall Population..... IB-1
 - 2. Group Quarters Population IB-1
 - 3. Housing Units by Type IB-2
 - 4. Occupied Housing Units (Households)..... IB-2
 - 5. Household Size IB-2
 - 6. Seasonal Dwelling Units IB-3
 - 7. Vehicles per Household IB-3
 - 8. Age Composition..... IB-3
 - 9. Race/Ethnicity IB-3
 - 10. Place of Birth and Citizenship..... IB-4
 - 11. Linguistic Isolation IB-4
 - 12. Labor Force IB-4
 - 13. Poverty Status IB-4
 - 14. Small Area Dwelling Unit and Population Data IB-5
 - B. Future Land Use Analysis..... IB-5

List of Tables

<u>Table</u>	<u>Title</u>	<u>Page</u>
IB-1a	Resident Population by Age, April 1, 2006, 2010 and 2015	IB-7
IB-1b	Change in Resident Population by Age, 2006-10, 2010-15 and 2006-15	IB-7
IB-2a	Resident Population by Race/Ethnicity, April 1, 2006, 2010 and 2015.....	IB-8
IB-2b	Change in Resident Population by Race/Ethnicity, 2006-10, 2010-15 and 2006-15	IB-8
IB-3	Licensed Public Lodging Facilities, 2007.....	IB-9
IB-4a	Housing Units by Vacancy Status and Tenure by Units in Structure, 2000.....	IB-10
IB-4b	Housing Units by Vacancy Status and Tenure by Units in Structure, 2006.....	IB-10
IB-5a	Residents by Tenure by Units in Structure, 2000.....	IB-11
IB-5b	Residents by Tenure by Units in Structure, 2006.....	IB-11
IB-6a	Number of Vacant Units by Vacancy Status, 2000	IB-12
IB-6b	Number of Vacant Units by Vacancy Status, 2006	IB-12
IB-7a	Occupied Housing Units by Tenure by Vehicles Available, 2000.....	IB-13
IB-7b	Occupied Housing Units by Tenure by Vehicles Available, 2006.....	IB-13
IB-8a	Number of Vehicles by Tenure and Vehicles per Occupied Unit, 2000.....	IB-13
IB-8b	Number of Vehicles by Tenure and Vehicles per Occupied Unit, 2006.....	IB-13
IB-9a	Resident Population by Gender and Age, 2000.....	IB-14
IB-9b	Resident Population by Gender and Age, 2006.....	IB-14
IB-10a	Resident Population by Race and Ethnicity, 2000	IB-15
IB-10b	Resident Population by Race and Ethnicity, 2006	IB-15
IB-11a	Resident Population by Age, Household Type and Relationship, 2000.....	IB-16
IB-11b	Resident Population by Age, Household Type and Relationship, 2006.....	IB-16
IB-12a	Resident Population by Place of Birth and Citizenship Status, 2000	IB-17
IB-12b	Resident Population by Place of Birth and Citizenship Status, 2006	IB-17
IB-13a	Households by Language and Linguistic Isolation, 2000	IB-18
IB-13b	Households by Language and Linguistic Isolation, 2006	IB-18
IB-14a	Civilian Non-Institutionalized Population 5 Years and Over by Disability Status, 2000	IB-19
IB-14b	Civilian Non-Institutionalized Population 5 Years and Over by Disability Status, 2006.....	IB-19
IB-15a	Resident Population 16 Years and Over by Gender and Employment Status, 2000	IB-20
IB-15b	Resident Population 16 Years and Over by Gender and Employment Status, 2006	IB-20
IB-16a	Resident Population by Poverty Status and by Age, 2000	IB-21
IB-16b	Resident Population by Poverty Status and by Age, 2006	IB-21
MDTAZ	Dwelling Unit, Population and Vehicle Estimates and Projections, 2006, 2010 and 2015.....	IB-22
IB-17	Generalized Future Land Uses, 2006	IB-23

List of Maps

<u>Map</u>	<u>Title</u>	<u>Page</u>
H1	Number of Vacant Seasonal Housing Units, 2000	IB-24
H2	Percent of Housing Units that are Vacant, 2000	IB-25
H3	Percent of Housing Units that are Vacant Seasonal, 2000	IB-26
H4	Average Household Size, 2000.....	IB-27
H5	Number of Mobile Homes, 2000.....	IB-28
H6	Number of Boats, Recreational Vehicles and Vans, 2000.....	IB-29
H7	Percent of Mobile Homes that are Vacant, 2000.....	IB-30
H8	Number of Households with No Vehicle, 2000.....	IB-31
H9	Average Number of Vehicles per Household, 2000	IB-32
P1	Residents per square mile, 2000	IB-33
P2	Percent of Population Under Age 5, 2000	IB-34
P3	Percent of Population 65 Years or Over, 2000.....	IB-35
P4	Population Living Alone, 2000.....	IB-36
P5	Percent of Population Living in Group Quarters, 2000.....	IB-37
P6	Population Over Age 65 Living Alone, 2000	IB-38
P7	Percent of Population Over Age 65 Living Alone, 2000	IB-39
P8	Number of Linguistically Isolated Households – Other Languages, 2000	IB-40
P9	Percent of Households that are Linguistically Isolated, 2000	IB-41
P10	Population Foreign Born – Not Citizens, 2000	IB-42
P11	Percent of Population that is Foreign Born, 2000.....	IB-43
P12	Percent of Population Over Age 65 With Disability, 2000	IB-44
P13	Percent of Population that is Unemployed, 2000	IB-45
P14	Percent of Population in the Labor Force, 2000.....	IB-46
P15	Per Capita Income (\$), 2000	IB-47
P16	Percent of Population 65 Years or Over Below Poverty, 2000.....	IB-48
MD7	Generalized Future Land Use 2006.....	IB-49

This page intentionally left blank.

I. DEMOGRAPHIC AND LAND USE ANALYSIS

A. Population Characteristics and Their Implications for Evacuation Dynamics

1. Overall Population¹

In February 2007, the University of Florida's Bureau of Economic and Business Research (BEBR) estimated that the permanent resident population of Miami-Dade County on April 1, 2006, was 2,437,022 (Table IB-1a), up by 183,243 (8.1%) from the 2000 Census. Miami-Dade is the largest county in Florida, and it placed first in absolute growth in the State over that period. BEBR projects the population will reach 2,568,807 in 2010 and 2,720,247 in 2015, which represents increases of 14.0% and 20.7%, respectively, in comparison to the 2000 Census. The projection for 2015 also represents an increase of more than 283,000 (11.6%) above the baseline population in 2006 (Table IB-1b), which would place Miami-Dade County first in the State in absolute growth for the period.

2. Group Quarters Population

In 2000, there were 45,916 Miami-Dade County residents living in group quarters (2.0% of the population); 29,436 of these were institutionalized in correctional facilities, nursing homes, and juvenile institutions, while the other 16,480 were in other group quarters, such as college dormitories, group homes and military quarters (Table IB-11a and Map P5). The remaining 2,207,406 residents lived in households. In 2006, the group quarters population had increased to over 61,000, about 2.6% of the total (Table

¹ Population estimates and projections customarily distinguish between the *permanent resident population* in a jurisdiction (people who reside in the location year-round or at least half of the time) and the *seasonal population* (people who reside in the location only a portion of the year or who are visitors, such as tourists). The permanent resident population is further broken into those who reside in *households* (occupied housing units) and those who are in *group quarters*, such as correctional facilities, nursing homes, military quarters, group homes, etc. The decennial census and the Census Bureau's new American Community Survey (ACS) present results for the permanent resident population, but not for the seasonal population. However, both the census and the ACS present data on vacant housing units, including those that are for seasonal use. Typically, local jurisdictions use these seasonal housing unit estimates, along with hotel and motel inventories, to prepare estimates and projections of the seasonal population for planning purposes. The estimates and projections prepared by the University of Florida's Bureau of Economic and Business Research (BEBR) also refer to the permanent resident population. Most of the data presented in this section is drawn from the sample portion of the 2000 Census of Population and Housing (Summary File 3) and from the 2006 ACS. The latter was tabulated only for the 40 counties that had a 2006 population of at least 65,000 permanent residents, so there is no 2006 ACS data for the 27 smallest counties in the State of Florida – in those counties, the 2006 tables will show "N.A." in all cells. Note that the annual ACS is collected for a much smaller sample than the 2000 Census, resulting in much larger margins of error. In addition, there are differences in the methodology that can affect the meaning of the data collected. As a result, comparisons should be made with caution. In some cases, although 2006 ACS data was tabulated for a county, the small sample size resulted in insufficient data to fill all of the cells in a given table – in those cases, the 2006 tables will show "N.A." in selected cells.

IB-11b). This is a little higher than the State of Florida average of 2.3% in 2006.

3. Housing Units by Type

Of the 852,278 housing units in Miami-Dade County at the time of the 2000 Census, 42.7% were single-family, 55.4% were multi-family, and the other 1.9% were mobile homes, boats, recreational vehicles (RVs) or others used as dwelling units (Table IB-4a). Among all units, 75,504 (8.9%) were vacant (Map H2), with the highest vacancy rates found among multi-family buildings (condos, many of which are on the barrier island) and among mobile homes. Mobile homes, boats and RVs are a much smaller component of the housing stock in Miami-Dade than in the State of Florida as a whole, where 12.0% of all units were classified in this category. Maps H5 and H6 show that most mobile homes, boats and RVs in Miami-Dade County in 2000 were located west of US 1, away from the barrier island and the most vulnerable areas of the County. According to the 2006 ACS (Table IB-4b), the total number of housing units in the County increased by 12% in the first six years of the decade (over 100,000 new units), while the number of vacant units rose by 65% to over 124,000 (13.0% of the total). The proportion of single-family units rose to 46.6% while the proportion of multi-family units fell to 51.8%, which is still much higher than the average share of multi-family units in the State of Florida in 2006 (32.5%). In the same period, the number of mobile homes, boats, recreational vehicles and other dwelling units declined from 16,159 to just over 15,000.

4. Occupied Housing Units (Households)

There were 776,774 occupied housing units (households) in Miami-Dade County in 2000 (Table IB-4a), 57.8% of which were occupied by owners and 42.2% by renters. The ownership ratio in Miami-Dade is well below the State of Florida average of 70.1%. By 2006 (Table IB-4b), the number of households had risen by almost 7% to more than 828,000, while the proportion of owner-occupied units rose to 59.8%.

5. Household Size

In 2000, the average household size (number of persons per occupied unit) in Miami-Dade County was 2.84 (Table IB-5a), which was significantly higher than the State of Florida average of 2.46. Renters, who are mostly concentrated in multi-family units, had a lower household size (2.61) than owners (3.01), who are more heavily concentrated in single-family units. The highest household sizes were more concentrated in the inland portions of the county where single-family units are more common (Map H4); still, the number of people per household was high in some of the vulnerable areas east of US 1 in the southeastern portion of the county. The average household size of 2.82 in 2006 (Table IB-5b) was basically unchanged for Miami-Dade County, and remained significantly higher than the State of Florida as a whole (2.47).

6. Seasonal Dwelling Units

In 2000 there were 31,316 vacant dwelling units in Miami-Dade County that were for seasonal, recreational or occasional use, representing 3.7% of all units (Table IB-6a). Many of these units were located on the barrier island and on the mainland, in the

northeastern corner of the county (Maps H1 and H3). By 2006 (Table IV-6b), this number had increased by 36% to over 42,000 units. According to licensing records of the Florida Department of Business and Professional Regulation (Table IB-3), in 2007 there were 273 hotels with 34,611 rooms, 150 motels with 8,556 rooms, and 2 bed and breakfast inns with 12 rooms in Miami-Dade County. Together, these units house a seasonal population that is in addition to the permanent resident population estimated above. Considering that many of these units are in vulnerable areas, the proportion of seasonal units and hotel/motel units that are occupied at any point in time will have an important impact on the total population that may participate in an evacuation.

7. Vehicles per Household

There were 111,323 Miami-Dade County households in 2000 that had no vehicle (14.3%), representing a quarter of all renter households but only 6.5% of owner households (Table IB-7a). This was much higher than the average for the State of Florida as a whole (8.1%), and represents a significant number of households that could need transportation assistance in the event of a major evacuation. Map H8 shows that many of these households are located on the barrier island and in coastal areas that are susceptible to storm surge; in addition, these households were spread out all over the county, making it more difficult to provide alternatives for providing assistance. Between 2000 and 2006 (Table IB-7b), the number of households with no vehicle decreased by almost 17,000 to 94,000 (11.4%). Meanwhile, households with a large number of vehicles were more concentrated in the south and west of the county in 2000 (Map H9). The number of households with 2 or more vehicles rose from 364,000 in 2000 to 420,000 in 2006, and the total number of vehicles in households increased to 1.3 million, up 149,000 in 6 years. The average number of vehicles per household in Miami-Dade County rose from 1.51 to 1.59 between 2000 and 2006 (Tables IB-8a and IB-8b), which could contribute to additional congestion on the highways in evacuation scenarios, especially in South Miami-Dade.

8. Age Composition

In 2000, the population of Miami-Dade County included 300,317 people who were at least 65 years old, which represented 13.3% of the total population (Table IB-9a); this was well below the proportion of elderly (17.6%) for the State of Florida as a whole. Almost a quarter of these elderly residents (67,756) lived alone (Table IB-11a), and many lived in coastal areas, although they could be found throughout the county (Maps P6 and P7). Moreover, 38,148 residents (1.7% of the total) were at least 85 years old. The median age in Miami-Dade County in 2000 (35.6) also was significantly below the state average (38.7). By 2006 (Table IB-9b), the elderly population (65+) had increased by almost 28,000, to 14.2% of the total population, and the number of elderly living alone had increased by more than 5,000 (Table IB-11b). During the same period, the number of children under 18 increased by 17,000, from 557,422 (24.7%) to almost 575,000 (23.9%). In 2006, 411,000 Miami-Dade County children were of school age (5 to 17 years old), down slightly from 412,572 in 2000.

9. Race / Ethnicity

The Hispanic or Latino population in Miami-Dade County, which includes those born

abroad as well as those born into Hispanic families in the United States, was made up of 1,291,681 residents (57.3% of the total population) in 2000 (Table IB-10a). Among the over 3,200 counties in the United States, Miami-Dade ranked second behind Los Angeles County in the absolute number of Hispanics. Indeed, the Hispanic population in the county increased by another 180,000 in the first 6 years of this decade, to 61.3% of the total (Table IB-10b). The Non-Hispanic Black or African American population, which in South Florida includes many people from the Caribbean and Central and South America, experienced only modest growth in the last 6 years, from 423,656 (18.8% of the total) in 2000 to about 438,000 (18.2%) in 2006.

10. Place of Birth and Citizenship

In 2000, half of Miami-Dade County residents (1,147,765) were born abroad (Table IB-12a and Map P11). By 2006, there were another 61,000 foreign-born residents living in Miami-Dade County (Table IB-12b). The vast majority (93.2%) of these foreign-born residents came from the Caribbean and Central and South America – in 2000, almost half were from Cuba (525,841), with other large groups from Nicaragua (86,108), Colombia (81,377), and Haiti (71,054). More than half of the foreign-born residents in 2000 (612,685) were not citizens (Map P10), a number which increased by almost 20,000 in the first six years of this decade. In addition, 29.6% of the residents of Miami-Dade County in 2000 were born somewhere in the State of Florida. The remaining residents (19.5%) were born in other parts of the United States.

11. Linguistic Isolation

As a result of the majority foreign-born population in Miami-Dade County, the level of linguistic isolation (households where no one 14 years or older speaks English “very well”) is significant. In 2000, 186,495 households (24.0%) were classified as linguistically isolated (Table IB-13a and Map P9). However, in the majority of these households (90.1%) Spanish was spoken – considering the availability of radio and television broadcasts in Spanish, as well as many service providers who speak Spanish, the inability to speak English very well is not a severe problem. Still, there were 17,430 linguistically isolated households in 2000 where a language other than Spanish was spoken; these were more concentrated in the northeastern corner of the county (Map P8). This number increased to almost 21,000 in 2006 (Table IB-13b).

12. Labor Force

In 2000, 42.5% of the population 16 years old and over of Miami-Dade County was not in the labor force (Table IB-15a and Map P14); this was slightly higher than the share of the inactive population in the State of Florida as a whole (41.3%). Miami-Dade County also had the highest unemployment rate in South Florida (8.7%). By 2006, the inactive population in Miami-Dade County had fallen to 38.0% (Table IB-15b), compared to 38.6% in the State of Florida, and the unemployment rate had fallen to 5.8%.

13. Poverty Status

There were 396,995 Miami-Dade residents in 2000 (Table IB-16a) that lived in households with incomes below the poverty level (18.0% of the total population).

Poverty rates were highest among children (23.2%), but 18.9% of elderly residents also lived below the poverty level (Map P16). While the overall poverty rate fell between 2000 and 2006 (Table IB-16b), to 16.4%, the rate for the elderly population rose to 22.7%. The poor elderly, especially those living alone, may represent a significant portion of those households without vehicles, which constitutes a substantial challenge for evacuation planning.

14. Small Area Dwelling Unit and Population Data

The Miami-Dade County Department of Planning and Zoning provided a set of household and population estimates for 2005 and projections for 2035 by traffic analysis zones (TAZs). These estimates and projections, most recently updated in 2007, are used by the Metropolitan Planning Organization for transportation planning purposes. The estimates for 2006 and the projections for 2010 and 2015 were derived by interpolation, using additional data provided by the Miami-Dade County Department of Emergency Management and Homeland Security.

B. Future Land Use Analysis

Miami-Dade County has the third largest physical area in the State of Florida, with over 2.2 million acres (1,946 square miles). It is bounded on the north by Broward County, on the east by the Atlantic Ocean, on the south by Monroe County, and on the west by Monroe County and Collier County. Two national parks are within its boundaries: Everglades National Park and Biscayne National Park. With 35 municipalities in 2006, the unincorporated portion of the county was home to 1.1 million residents, 45.1% of the county total.

Almost 900,000 acres (40.1%) in the western and southern parts of the county are classified for conservation, and are generally unsuitable for urban development (see Table IB-17 and Map MD7). This environmentally sensitive area includes essential components of the larger Everglades system and is host to a wide variety of species. Miami-Dade County has implemented an urban development boundary within which additional development is expected to occur through 2015, and an urban expansion area, within which additional development may be allowed between 2015 and 2025.

There are another 77,000 acres (3.5%) set aside within the developed portion of the county for recreation and open space. An additional 82,000 acres (3.7%), classified as agriculture, are located mostly in the southwestern part of the county, forming a buffer between developed areas and the conservation areas – much of this land is engaged in agricultural activities.

The developed portion of Miami-Dade County to the east is largely built out. This means that future development will be mostly based on infill and redevelopment. Within this area, residential future land uses account for nearly 177,000 acres, most of which (5.7% of the total area) is reserved for medium-density. Another 1.3% is classified as low-density residential and the other 0.9% is for high-density residential. Residential uses are spread throughout the county, although most of the low-density can be found in the southeastern quadrant, close to US 1. A significant amount of high-density residential land can be found in downtown Miami and along the eastern portion of the county, including on or adjacent to

the barrier island.

Miami-Dade County also has a modest inventory of industrial future land uses, with almost 48,000 acres (2.1% of the total), followed by commercial/office with 24,000 (1.1%), institutional/government (0.6%) and mixed-use (0.1%).

Table IB-1a. Resident Population² by Age, April 1, 2006, 2010 and 2015

Miami-Dade County Age Categories	Absolute Number			% of Total Population		
	2006	2010	2015	2006	2010	2015
Age under 5 years	167,064	169,093	172,296	6.86%	6.58%	6.33%
Age 5 to 17 years	428,229	444,005	462,568	17.57%	17.28%	17.00%
Age 18 to 24 years	228,273	240,248	245,070	9.37%	9.35%	9.01%
Age 25 to 34 years	330,507	337,803	357,580	13.56%	13.15%	13.15%
Age 35 to 44 years	374,782	368,913	367,733	15.38%	14.36%	13.52%
Age 45 to 54 years	332,121	370,395	386,335	13.63%	14.42%	14.20%
Age 55 to 64 years	246,377	280,757	323,447	10.11%	10.93%	11.89%
Age 65 to 74 years	171,173	186,395	217,561	7.02%	7.26%	8.00%
Age 75 to 84 years	114,240	120,413	127,970	4.69%	4.69%	4.70%
Age 85 years and over	44,256	50,785	59,687	1.82%	1.98%	2.19%
Total	2,437,022	2,568,807	2,720,247	100.00%	100.00%	100.00%
Age under 18 years	595,293	613,098	634,864	24.43%	23.87%	23.34%
Age 65 years and over	329,669	357,593	405,218	13.53%	13.92%	14.90%

Source: Florida Legislature, Office of Economic and Demographic Research (August 2007).

Table IB-1b. Change in Resident Population by Age, 2006-10, 2010-15 and 2006-15

Miami-Dade County Age Categories	Absolute Change			% Change in the Period		
	2006-10	2010-15	2006-15	2006-10	2010-15	2006-15
Age under 5 years	2,029	3,203	5,232	1.21%	1.89%	3.13%
Age 5 to 17 years	15,776	18,563	34,339	3.68%	4.18%	8.02%
Age 18 to 24 years	11,975	4,822	16,797	5.25%	2.01%	7.36%
Age 25 to 34 years	7,296	19,777	27,073	2.21%	5.85%	8.19%
Age 35 to 44 years	-5,869	-1,180	-7,049	-1.57%	-0.32%	-1.88%
Age 45 to 54 years	38,274	15,940	54,214	11.52%	4.30%	16.32%
Age 55 to 64 years	34,380	42,690	77,070	13.95%	15.21%	31.28%
Age 65 to 74 years	15,222	31,166	46,388	8.89%	16.72%	27.10%
Age 75 to 84 years	6,173	7,557	13,730	5.40%	6.28%	12.02%
Age 85 years and over	6,529	8,902	15,431	14.75%	17.53%	34.87%
Total	131,785	151,440	283,225	5.41%	5.90%	11.62%
Age under 18 years	17,805	21,766	39,571	2.99%	3.55%	6.65%
Age 65 years and over	27,924	47,625	75,549	8.47%	13.32%	22.92%

Source: Florida Legislature, Office of Economic and Demographic Research (August 2007).

² Official state and county estimates and projections published by the University of Florida's Bureau of Economic and Business Research (BEBR) were released in database format by the Florida Legislature's Office of Economic and Demographic Research (EDR) in August 2007, with age, gender and race/ethnicity detail, and interpolations for every quarter of every single year from 1960 (Q2) to 2030 (Q2).

Table IB-2a. Resident Population by Race/Ethnicity, April 1, 2006, 2010 and 2015

Miami-Dade County Race/Ethnic Categories	Absolute Number			% of Total Population		
	2006	2010	2015	2006	2010	2015
White Non-Hispanic	404,631	358,995	312,878	16.60%	13.98%	11.50%
Black or African American (NH)	485,822	502,409	529,950	19.94%	19.56%	19.48%
Other race and 2 or more races	45,028	48,979	54,862	1.85%	1.91%	2.02%
Hispanic or Latino (all races)	1,501,541	1,658,424	1,822,557	61.61%	64.56%	67.00%
Total	2,437,022	2,568,807	2,720,247	100.00%	100.00%	100.00%

Source: Florida Legislature, Office of Economic and Demographic Research (August 2007).

Table IB-2b. Change in Resident Population by Race/Ethnicity, 2006-10, 2010-15 and 2006-15

Miami-Dade County Race/Ethnic Categories	Absolute Change			% Change in the Period		
	2006-10	2010-15	2006-15	2006-10	2010-15	2006-15
White Non-Hispanic	-45,636	-46,117	-91,753	-11.28%	-12.85%	-22.68%
Black or African American (NH)	16,587	27,541	44,128	3.41%	5.48%	9.08%
Other race and 2 or more races	3,951	5,883	9,834	8.77%	12.01%	21.84%
Hispanic or Latino (all races)	156,883	164,133	321,016	10.45%	9.90%	21.38%
Total	131,785	151,440	283,225	5.41%	5.90%	11.62%

Source: Florida Legislature, Office of Economic and Demographic Research (August 2007).

Table IB-3. Licensed Public Lodging Facilities, 2007

Type of Lodging Facility	Absolute Number		%	
	Facilities	Rooms/Units	Facilities	Rooms/Units
Hotels	273	34,611	4.21%	16.35%
Motels	150	8,556	2.31%	4.04%
Non-Transient Apartments	5,891	162,790	90.88%	76.92%
Transient Apartments	17	725	0.26%	0.34%
Non-Transient Rooming Houses	50	1,148	0.77%	0.54%
Transient Rooming Houses	50	543	0.77%	0.26%
Bed and Breakfast Inns	2	12	0.03%	0.01%
Resort Condominiums - Single	11	183	0.17%	0.09%
Resort Condominiums - Group	29	2,819	0.45%	1.33%
Resort Condominiums - Collective	3	35	0.05%	0.02%
Resort Dwellings - Single	5	224	0.08%	0.11%
Resort Dwellings - Group	0	0	0.00%	0.00%
Resort Dwellings - Collective	1	2	0.02%	0.00%
Total	6,482	211,648	100.00%	100.00%

Source: Florida Department of Business and Professional Regulation, Division of Hotels and Restaurants (March 13, 2007).

Table IB-4a. Housing Units³ by Vacancy Status and Tenure by Units in Structure, 2000

Miami-Dade County Units in Structure	Occupied Units			Vacant Units	Total Units	Vacant %
	Owner	Renter	Total			
1, detached	299,147	50,352	349,499	14,350	363,849	3.94%
1, attached	48,427	31,836	80,263	4,457	84,720	5.26%
2	4,258	15,938	20,196	1,717	21,913	7.84%
3 or 4	6,629	24,128	30,757	2,625	33,382	7.86%
5 to 9	7,996	31,449	39,445	3,883	43,328	8.96%
10 to 19	8,425	41,129	49,554	5,195	54,749	9.49%
20 to 49	17,239	47,697	64,936	8,654	73,590	11.76%
50 or more	47,250	80,960	128,210	32,378	160,588	20.16%
Mobile home	9,734	3,744	13,478	1,860	15,338	12.13%
Boat, RV, van, etc.	228	208	436	385	821	46.89%
Total	449,333	327,441	776,774	75,504	852,278	8.86%
% Single Family	66.58%	15.38%	44.99%	19.01%	42.69%	
% Multi-Family	31.21%	83.42%	53.22%	78.02%	55.41%	
% Mobile Home	2.17%	1.14%	1.74%	2.46%	1.80%	
% Boat, RV, Van, etc.	0.05%	0.06%	0.06%	0.51%	0.10%	

Source: US Bureau of the Census, 2000 Census of Population and Housing (Summary File 3).

Table IB-4b. Housing Units by Vacancy Status and Tenure by Units in Structure, 2006

Miami-Dade County Units in Structure	Occupied Units			Vacant Units	Total Units	Vacant %
	Owner	Renter	Total			
1, detached	327,663	58,905	386,568	25,188	411,756	6.12%
1, attached	50,069	36,002	86,071	8,077	94,148	8.58%
2	3,338	14,231	17,569	1,603	19,172	8.36%
3 or 4	7,120	24,032	31,152	3,888	35,040	11.10%
5 to 9	10,715	31,259	41,974	6,156	48,130	12.79%
10 to 19	12,911	42,787	55,698	10,263	65,961	15.56%
20 to 49	20,021	51,746	71,767	15,021	86,788	17.31%
50 or more	54,521	70,484	125,005	52,014	177,019	29.38%
Mobile home	9,032	3,615	12,647	2,027	14,674	13.81%
Boat, RV, van, etc.	343	0	343	0	343	0.00%
Total	495,733	333,061	828,794	124,237	953,031	13.04%
% Single Family	66.10%	17.69%	46.64%	20.27%	43.20%	
% Multi-Family	32.01%	81.23%	51.79%	78.09%	55.22%	
% Mobile Home	1.82%	1.09%	1.53%	1.63%	1.54%	
% Boat, RV, Van, etc.	0.07%	0.00%	0.04%	0.00%	0.04%	

Source: US Bureau of the Census, 2006 American Community Survey.

³ A housing unit is a house, an apartment, a mobile home, a group of rooms, or a single room occupied (or if vacant, intended for occupancy) as separate living quarters. Separate living quarters are those in which the occupants live separately from any other people in the building and that have direct access from the outside of the building or through a common hall. Both occupied and vacant housing units are included in the housing unit inventory. Boats, recreational vehicles (RVs), vans, tents, and the like are housing units only if they are occupied as someone's usual place of residence. Vacant mobile homes are included provided they are intended for occupancy on the site where they stand. Vacant mobile homes on dealers' lots, at the factory, or in storage yards are excluded from the housing inventory. Also excluded from the housing inventory are quarters being used entirely for nonresidential purposes, such as a store or an office, or quarters used for the storage of business supplies or inventory.

Table IB-5a. Residents by Tenure by Units in Structure⁴, 2000

Miami-Dade County Units in Structure	Persons in Occupied Units			Persons per Occupied Unit		
	Owner	Renter	Total	Owner	Renter	Total
1, detached	993,510	173,610	1,167,120	3.32	3.45	3.34
1, attached	143,090	99,543	242,633	2.95	3.13	3.02
2	12,128	46,131	58,259	2.85	2.89	2.88
3 or 4	17,795	64,380	82,175	2.68	2.67	2.67
5 to 9	19,517	78,421	97,938	2.44	2.49	2.48
10 to 19	18,030	94,856	112,886	2.14	2.31	2.28
20 to 49	32,452	110,342	142,794	1.88	2.31	2.20
50 or more	87,881	175,078	262,959	1.86	2.16	2.05
Mobile home	27,817	11,767	39,584	2.86	3.14	2.94
Boat, RV, van, etc.	638	460	1,098	2.80	2.21	2.52
Total	1,352,858	854,588	2,207,446	3.01	2.61	2.84

Source: US Bureau of the Census, 2000 Census of Population and Housing (Summary File 3).

Table IB-5b. Residents by Tenure by Units in Structure, 2006

Miami-Dade County Units in Structure	Persons in Occupied Units			Persons per Occupied Unit		
	Owner	Renter	Total	Owner	Renter	Total
1, detached or attached	1,231,182	309,909	1,541,091	3.26	3.27	3.26
2 to 4	25,710	102,064	127,774	2.46	2.67	2.62
5 or more	198,811	437,975	636,786	2.03	2.23	2.16
Mobile home	25,338	9,545	34,883	2.81	2.64	2.76
Boat, RV, van, etc.	343	0	343	1.00	0.00	1.00
Total	1,481,384	859,493	2,340,877	2.99	2.58	2.82

Source: US Bureau of the Census, 2006 American Community Survey.

⁴ Tables IB-5a and IB-5b present the number of residents in the occupied housing units shown in Tables IB-4a and IB-4b for 2000 and 2006, respectively, by type of housing unit. They also show the average number of residents by type of housing unit, which can be used in transportation models to estimate the number of evacuating people.

Table IB-6a. Number of Vacant Units by Vacancy Status⁵, 2000

Miami-Dade County Vacancy Status	Vacant Units	%
For rent	20,508	27.16%
For sale only	10,986	14.55%
Rented or sold, not occupied	5,529	7.32%
For seasonal, recreational, or occasional use	31,316	41.48%
For migrant workers	78	0.10%
Other vacant	7,087	9.39%
Total	75,504	100.00%

Source: US Bureau of the Census, 2000 Census of Population and Housing (Summary File 3).

Table IB-6b. Number of Vacant Units by Vacancy Status, 2006

Miami-Dade County Vacancy Status	Vacant Units	%
For rent	20,581	16.57%
Rented, not occupied	6,180	4.97%
For sale only	18,088	14.56%
Sold, not occupied	9,687	7.80%
For seasonal, recreational, or occasional use	42,636	34.32%
For migrant workers	387	0.31%
Other vacant	26,678	21.47%
Total	124,237	100.00%

Source: US Bureau of the Census, 2006 American Community Survey.

⁵ Vacancy status and other characteristics of vacant units were determined by census enumerators obtaining information from landlords, owners, neighbors, rental agents, and others. Vacant units for seasonal, recreational, or occasional use are vacant units used or intended for use only in certain seasons, for weekends, or other occasional use throughout the year. Seasonal units include those used for summer or winter sports or recreation, such as beach cottages and hunting cabins. Seasonal units also may include quarters for such workers as herders and loggers. Interval ownership units, sometimes called shared-ownership or time-sharing condominiums, also are included in this category. Vacant migrant worker units include those intended for occupancy by migrant workers employed in farm work during the crop season. (Work in a cannery, a freezer plant, or a food-processing plant is not farm work.)

Table IB-7a. Occupied Housing Units by Tenure by Vehicles Available⁶, 2000

Miami-Dade County Vehicles Available	Number of Occupied Units			% of Occupied Units		
	Owner	Renter	Total	Owner	Renter	Total
No vehicle available	29,059	82,264	111,323	6.47%	25.12%	14.33%
1 vehicle available	148,947	152,553	301,500	33.15%	46.59%	38.81%
2 vehicles available	187,586	75,670	263,256	41.75%	23.11%	33.89%
3 vehicles available	60,280	12,953	73,233	13.42%	3.96%	9.43%
4 vehicles available	18,021	2,589	20,610	4.01%	0.79%	2.65%
5 or more vehicles available	5,440	1,412	6,852	1.21%	0.43%	0.88%
Total	449,333	327,441	776,774	100.00%	100.00%	100.00%

Source: US Bureau of the Census, 2000 Census of Population and Housing (Summary File 3).

Table IB-7b. Occupied Housing Units by Tenure by Vehicles Available, 2006

Miami-Dade County Vehicles Available	Number of Occupied Units			% of Occupied Units		
	Owner	Renter	Total	Owner	Renter	Total
No vehicle available	21,195	73,257	94,452	4.28%	22.00%	11.40%
1 vehicle available	155,012	159,408	314,420	31.27%	47.86%	37.94%
2 vehicles available	214,708	81,190	295,898	43.31%	24.38%	35.70%
3 vehicles available	76,348	15,031	91,379	15.40%	4.51%	11.03%
4 vehicles available	22,587	3,636	26,223	4.56%	1.09%	3.16%
5 or more vehicles available	5,883	539	6,422	1.19%	0.16%	0.77%
Total	495,733	333,061	828,794	100.00%	100.00%	100.00%

Source: US Bureau of the Census, 2006 American Community Survey.

Table IB-8a. Number of Vehicles by Tenure and Vehicles per Occupied Unit, 2000

Miami-Dade County Vehicles Available	Number of Vehicles by Tenure			% of Vehicles in Occupied Units		
	Owner	Renter	Total	Owner	Renter	Total
Aggregate Number of Vehicles	807,525	361,876	1,169,401	69.05%	30.95%	100.00%
Vehicles per Occupied Unit	1.80	1.11	1.51			

Source: US Bureau of the Census, 2000 Census of Population and Housing (Summary File 3).

Table IB-8b. Number of Vehicles by Tenure and Vehicles per Occupied Unit, 2006

Miami-Dade County Vehicles Available	Number of Vehicles by Tenure			% of Vehicles in Occupied Units		
	Owner	Renter	Total	Owner	Renter	Total
Aggregate Number of Vehicles	933,795	384,483	1,318,278	70.83%	29.17%	100.00%
Vehicles per Occupied Unit	1.88	1.15	1.59			

Source: US Bureau of the Census, 2006 American Community Survey.

⁶ These data show the number of passenger cars, vans, and pickup or panel trucks of 1-ton capacity or less kept at home and available for the use of household members. Vehicles rented or leased for 1 month or more, company vehicles, and police and government vehicles are included if kept at home and used for non-business purposes. Dismantled or immobile vehicles are excluded. Vehicles kept at home but used only for business purposes also are excluded.

Table IB-9a. Resident Population by Gender and Age, 2000

Miami-Dade County Age Categories	Absolute Number			% of Total Population		
	Male	Female	Total	Male	Female	Total
Age under 5 years	73,996	70,854	144,850	6.81%	6.07%	6.43%
Age 5 to 17 years	210,294	202,278	412,572	19.35%	17.34%	18.31%
Age 18 to 24 years	102,072	102,079	204,151	9.39%	8.75%	9.06%
Age 25 to 34 years	165,462	167,961	333,423	15.23%	14.39%	14.80%
Age 35 to 44 years	183,197	187,302	370,499	16.86%	16.05%	16.44%
Age 45 to 54 years	133,271	147,727	280,998	12.27%	12.66%	12.47%
Age 55 to 64 years	96,070	110,482	206,552	8.84%	9.47%	9.17%
Age 65 to 74 years	72,404	90,454	162,858	6.66%	7.75%	7.23%
Age 75 to 84 years	38,397	60,914	99,311	3.53%	5.22%	4.41%
Age 85 years and over	11,395	26,753	38,148	1.05%	2.29%	1.69%
Total	1,086,558	1,166,804	2,253,362	100.00%	100.00%	100.00%
% Age under 18 years	26.16%	23.41%	24.74%			
% Age 65 years and over	11.25%	15.27%	13.33%			

Source: US Bureau of the Census, 2000 Census of Population and Housing (Summary File 3).

Table IB-9b. Resident Population by Gender and Age, 2006

Miami-Dade County Age Categories	Absolute Number			% of Total Population		
	Male	Female	Total	Male	Female	Total
Age under 5 years	84,296	79,464	163,760	7.25%	6.41%	6.82%
Age 5 to 17 years	209,190	201,815	411,005	17.98%	16.29%	17.11%
Age 18 to 24 years	118,114	117,414	235,528	10.15%	9.48%	9.80%
Age 25 to 34 years	146,356	144,295	290,651	12.58%	11.65%	12.10%
Age 35 to 44 years	187,012	188,741	375,753	16.08%	15.24%	15.64%
Age 45 to 54 years	160,348	173,829	334,177	13.78%	14.03%	13.91%
Age 55 to 64 years	117,026	132,783	249,809	10.06%	10.72%	10.40%
Age 65 to 74 years	77,992	98,258	176,250	6.70%	7.93%	7.34%
Age 75 to 84 years	49,806	70,144	119,950	4.28%	5.66%	4.99%
Age 85 years and over	13,205	32,120	45,325	1.14%	2.59%	1.89%
Total	1,163,345	1,238,863	2,402,208	100.00%	100.00%	100.00%
% Age under 18 years	25.23%	22.70%	23.93%			
% Age 65 years and over	12.12%	16.19%	14.22%			

Source: US Bureau of the Census, 2006 American Community Survey.

Table IB-10a. Resident Population by Race and Ethnicity⁷, 2000

Miami-Dade County Race Categories	Ethnicity - Hispanic or Latino			% of Total Population		
	Non-Hisp	Hispanic	Total	Non-Hisp	Hispanic	Total
White alone	465,894	1,105,096	1,570,990	48.45%	85.55%	69.72%
Black or African American alone	423,656	28,677	452,333	44.05%	2.22%	20.07%
Other race alone and 2+ races	72,131	157,908	230,039	7.50%	12.22%	10.21%
Total	961,681	1,291,681	2,253,362	100.00%	100.00%	100.00%

Source: US Bureau of the Census, 2000 Census of Population and Housing (Summary File 3).

Table IB-10b. Resident Population by Race and Ethnicity, 2006

Miami-Dade County Race Categories	Ethnicity - Hispanic or Latino			% of Total Population		
	Non-Hisp	Hispanic	Total	Non-Hisp	Hispanic	Total
White alone	432,130	1,284,032	1,716,162	46.44%	87.25%	71.44%
Black or African American alone	438,174	33,848	472,022	47.09%	2.30%	19.65%
Other race alone and 2+ races	60,195	153,829	214,024	6.47%	10.45%	8.91%
Total	930,499	1,471,709	2,402,208	100.00%	100.00%	100.00%

Source: US Bureau of the Census, 2006 American Community Survey.

⁷ Race and ethnicity are separate categories in both the 2000 Census and the 2006 American Community Survey (ACS). For each person the surveys included two separate questions. The first asks whether each person in the household considers himself/herself to be of Hispanic or Latino origin (ethnicity). The second asks each person in the household to identify one or more racial categories that should be used to classify his/her racial makeup. Both questions request the respondent to classify himself/herself, rather than having a Census Bureau employee assign a classification. The tables presented here are cross-tabulations of the two characteristics. Race is tabulated into three categories: (1) White persons who identified only one race (White alone); (2) Black or African American persons who identified only one race (Black or African American alone); and (3) persons of other races who identified only one race (Other race alone) and those who identified two or more races, combined into a single category. For each race category, the totals were calculated for those who indicated that they were of Hispanic or Latino origin and those who indicated that they were not.

Table IB-11a. Resident Population by Age, Household⁸ Type and Relationship, 2000

Miami-Dade County Household Type, Relationship	Number of Persons, by Age			% of Total Population		
	Under 65	65+	Total	Under 65	65+	Total
In households	1,919,227	288,219	2,207,446	98.27%	95.97%	97.96%
In family households	1,716,919	210,235	1,927,154	87.91%	70.00%	85.52%
In nonfamily households	202,308	77,984	280,292	10.36%	25.97%	12.44%
Male householder	86,386	21,513	107,899	4.42%	7.16%	4.79%
Living alone	62,766	18,492	81,258	3.21%	6.16%	3.61%
Not living alone	23,620	3,021	26,641	1.21%	1.01%	1.18%
Female householder	64,887	52,108	116,995	3.32%	17.35%	5.19%
Living alone	50,554	49,264	99,818	2.59%	16.40%	4.43%
Not living alone	14,333	2,844	17,177	0.73%	0.95%	0.76%
Nonrelatives	51,035	4,363	55,398	2.61%	1.45%	2.46%
In group quarters	33,818	12,098	45,916	1.73%	4.03%	2.04%
Institutionalized population	20,284	9,152	29,436	1.04%	3.05%	1.31%
Noninstitutionalized population	13,534	2,946	16,480	0.69%	0.98%	0.73%
Total	1,953,045	300,317	2,253,362	100.00%	100.00%	100.00%
Population Living Alone	113,320	67,756	181,076	5.80%	22.56%	8.04%

Source: US Bureau of the Census, 2000 Census of Population and Housing (Summary File 3).

Table IB-11b. Resident Population by Age, Household Type and Relationship, 2006

Miami-Dade County Household Type, Relationship	Number of Persons, by Age			% of Total Population		
	Under 65	65+	Total	Under 65	65+	Total
In households	2,014,322	326,555	2,340,877	97.75%	95.62%	97.45%
In family households	1,772,155	244,025	2,016,180	86.00%	71.45%	83.93%
In nonfamily households	242,167	82,530	324,697	11.75%	24.17%	13.52%
Male householder	104,975	25,416	130,391	5.09%	7.44%	5.43%
Living alone	79,998	22,588	102,586	3.88%	6.61%	4.27%
Not living alone	24,977	2,828	27,805	1.21%	0.83%	1.16%
Female householder	76,709	52,164	128,873	3.72%	15.27%	5.36%
Living alone	62,318	50,519	112,837	3.02%	14.79%	4.70%
Not living alone	14,391	1,645	16,036	0.70%	0.48%	0.67%
Nonrelatives	60,483	4,950	65,433	2.94%	1.45%	2.72%
In group quarters	46,361	14,970	61,331	2.25%	4.38%	2.55%
Institutionalized population						
Noninstitutionalized population						
Total	2,060,683	341,525	2,402,208	100.00%	100.00%	100.00%
Population Living Alone	142,316	73,107	215,423	6.91%	21.41%	8.97%

Source: US Bureau of the Census, 2006 American Community Survey.

⁸ A household includes all of the people who occupy a housing unit. (People not living in households are classified as living in group quarters.) A family includes a householder and one or more other people living in the same household who are related to the householder by birth, marriage or adoption. All people in a household who are related to the householder are regarded as members of his or her family. A family household may contain people not related to the householder, but those people are not included as part of the householder's family in census tabulations. Not all households contain families since a household may be comprised of a group of unrelated people or of one person living alone (nonfamily households).

Table IB-12a. Resident Population by Place of Birth and Citizenship Status, 2000

Miami-Dade County Place of Birth	Absolute Number	%
Native - Born in state of residence	666,190	29.56%
Native - Born in other state in the US	370,273	16.43%
Native - Born outside the United States	69,134	3.07%
Foreign-born - Naturalized citizen	535,080	23.75%
Foreign-born - Not a citizen	612,685	27.19%
Total	2,253,362	100.00%

Source: US Bureau of the Census, 2000 Census of Population and Housing (Summary File 3).

Table IB-12b. Resident Population by Place of Birth and Citizenship Status, 2006

Miami-Dade County Place of Birth	Absolute Number	%
Native - Born in state of residence	770,676	32.08%
Native - Born in other state in the US	339,271	14.12%
Native - Born outside the United States	83,366	3.47%
Foreign-born - Naturalized citizen	576,376	23.99%
Foreign-born - Not a citizen	632,519	26.33%
Total	2,402,208	100.00%

Source: US Bureau of the Census, 2006 American Community Survey.

Table IB-13a. Households by Language and Linguistic Isolation⁹, 2000

Miami-Dade County Language Spoken in the Household	Households by Linguistic Isolation			Linguistic Isolation (%)		
	Isolated	Not Isolated	Total	Isolated	Not Isolated	Total
English	0	241,929	241,929	0.00%	100.00%	100.00%
Spanish	169,065	291,431	460,496	36.71%	63.29%	100.00%
Other Indo-European languages	14,428	47,554	61,982	23.28%	76.72%	100.00%
Asian & Pacific Island languages	2,052	4,990	7,042	29.14%	70.86%	100.00%
Other languages	950	4,979	5,929	16.02%	83.98%	100.00%
Total	186,495	590,883	777,378	23.99%	76.01%	100.00%

Source: US Bureau of the Census, 2000 Census of Population and Housing (Summary File 3).

Table IB-13b. Households by Language and Linguistic Isolation, 2006

Miami-Dade County Language Spoken in the Household	Households by Linguistic Isolation			Linguistic Isolation (%)		
	Isolated	Not Isolated	Total	Isolated	Not Isolated	Total
English	0	225,660	225,660	0.00%	100.00%	100.00%
Spanish	198,073	329,143	527,216	37.57%	62.43%	100.00%
Other Indo-European languages	17,862	45,875	63,737	28.02%	71.98%	100.00%
Asian & Pacific Island languages	2,015	5,116	7,131	28.26%	71.74%	100.00%
Other languages	877	4,173	5,050	17.37%	82.63%	100.00%
Total	218,827	609,967	828,794	26.40%	73.60%	100.00%

Source: US Bureau of the Census, 2006 American Community Survey.

⁹ A household in which no person 14 years old and over speaks only English and no person 14 years old and over who speaks a language other than English speaks English "very well" is classified as "linguistically isolated." In other words, a household in which all members 14 years old and over speak a non-English language and also speak English less than "very well" (have difficulty with English) is "linguistically isolated." All the members of a linguistically isolated household are tabulated as linguistically isolated, including members under 14 years old who may speak only English.

Table IB-14a. Civilian Non-Institutionalized Population 5 Years and Over by Disability Status¹⁰, 2000

Miami-Dade County Age Categories	Disability Status			Disability Status (%)		
	With	Without	Total	With	Without	Total
5 to 15 years	17,521	332,269	349,790	5.01%	94.99%	100.00%
16 to 20 years	24,014	126,728	150,742	15.93%	84.07%	100.00%
21 to 64 years	300,048	985,961	1,286,009	23.33%	76.67%	100.00%
65 to 74 years	58,046	102,961	161,007	36.05%	63.95%	100.00%
75 and over	74,363	55,795	130,158	57.13%	42.87%	100.00%
Total	473,992	1,603,714	2,077,706	22.81%	77.19%	100.00%

Source: US Bureau of the Census, 2000 Census of Population and Housing (Summary File 3).

Table IB-14b. Civilian Non-Institutionalized Population 5 Years and Over by Disability Status¹¹, 2006

Miami-Dade County Age Categories	Disability Status			Disability Status (%)		
	With	Without	Total	With	Without	Total
5 to 15 years	17,167	330,116	347,283	4.94%	95.06%	100.00%
16 to 20 years	8,373	154,755	163,128	5.13%	94.87%	100.00%
21 to 64 years	154,131	1,207,699	1,361,830	11.32%	88.68%	100.00%
65 to 74 years	58,752	116,003	174,755	33.62%	66.38%	100.00%
75 and over	90,976	68,387	159,363	57.09%	42.91%	100.00%
Total	329,399	1,876,960	2,206,359	14.93%	85.07%	100.00%

Source: US Bureau of the Census, 2006 American Community Survey.

¹⁰ The data on disability status were derived from answers to two long-form questionnaire items. The first was a two-part question that asked about the existence of the following long-lasting conditions: (a) blindness, deafness, or a severe vision or hearing impairment (sensory disability) and (b) a condition that substantially limits one or more basic physical activities, such as walking, climbing stairs, reaching, lifting, or carrying (physical disability). This question was asked of a sample of the population 5 years old and over. The second was a four-part question that asked if the individual had a physical, mental, or emotional condition lasting 6 months or more that made it difficult to perform certain activities. The four activity categories were: (a) learning, remembering, or concentrating (mental disability); (b) dressing, bathing, or getting around inside the home (self-care disability); (c) going outside the home alone to shop or visit a doctor's office (going outside the home disability); and (d) working at a job or business (employment disability). Categories (a) and (b) were asked of a sample of the population 5 years old and over; (c) and (d) were asked of a sample of the population 16 years old and over. For data products that use a disability status indicator, individuals were classified as having a disability if any of the following three conditions were true: (1) they were 5 years old and over and had a response of "yes" to a sensory, physical, mental or self-care disability; (2) they were 16 years old and over and had a response of "yes" to going outside the home disability; or (3) they were 16 to 64 years old and had a response of "yes" to employment disability.

¹¹ In response to evidence suggesting that mail respondents reported certain disabilities in error in the 2000 Census and in the initial years of the ACS, the Census Bureau introduced changes to the ACS questionnaire starting in 2003. Initial review of the data shows that the question redesign had the expected effect on mail respondents, lowering the rates of disability overall by reducing over-reporting in go-outside-home disability and employment disability after the change. This change affected primarily the respondents in the age range from 16 to 64 years, and makes comparisons between results of the 2000 Census and the 2006 ACS inappropriate. The 2006 ACS is believed to have more reliable results.

Table IB-15a. Resident Population 16 Years and Over by Gender and Employment Status, 2000

Miami-Dade County Employment Status	Absolute Number			% of Total Population 16 and Over		
	Male	Female	Total	Male	Female	Total
In labor force	535,323	475,642	1,010,965	64.16%	51.47%	57.49%
In Armed Forces	1,222	287	1,509	0.15%	0.03%	0.09%
Civilian	534,101	475,355	1,009,456	64.02%	51.44%	57.41%
Employed	493,524	427,684	921,208	59.15%	46.28%	52.39%
Unemployed	40,577	47,671	88,248	4.86%	5.16%	5.02%
Not in labor force	298,997	448,412	747,409	35.84%	48.53%	42.51%
Total	834,320	924,054	1,758,374	100.00%	100.00%	100.00%
Unemployment Rate (%)	7.58%	10.02%	8.73%			

Source: US Bureau of the Census, 2000 Census of Population and Housing (Summary File 3).

Table IB-15b. Resident Population 16 Years and Over by Gender and Employment Status, 2006

Miami-Dade County Employment Status	Absolute Number			% of Total Population 16 and Over		
	Male	Female	Total	Male	Female	Total
In labor force	624,100	548,117	1,172,217	69.15%	55.45%	61.99%
In Armed Forces	912	264	1,176	0.10%	0.03%	0.06%
Civilian	623,188	547,853	1,171,041	69.05%	55.42%	61.93%
Employed	591,660	511,445	1,103,105	65.56%	51.74%	58.33%
Unemployed	31,528	36,408	67,936	3.49%	3.68%	3.59%
Not in labor force	278,392	440,413	718,805	30.85%	44.55%	38.01%
Total	902,492	988,530	1,891,022	100.00%	100.00%	100.00%
Unemployment Rate (%)	5.05%	6.64%	5.80%			

Source: US Bureau of the Census, 2006 American Community Survey.

Table IB-16a. Resident Population by Poverty Status and by Age, 2000

Miami-Dade County Age Categories	Income in 1999 - Poverty Status			Poverty Status (%)		
	Below	Above	Total	Below	Above	Total
Under 5 years	32,995	109,119	142,114	23.22%	76.78%	100.00%
5 years	6,915	23,082	29,997	23.05%	76.95%	100.00%
6 to 11 years	44,415	145,338	189,753	23.41%	76.59%	100.00%
12 to 17 years	43,110	143,397	186,507	23.11%	76.89%	100.00%
18 to 64 years	214,540	1,155,013	1,369,553	15.66%	84.34%	100.00%
65 to 74 years	28,494	132,513	161,007	17.70%	82.30%	100.00%
75 years and over	26,526	103,632	130,158	20.38%	79.62%	100.00%
Total	396,995	1,812,094	2,209,089	17.97%	82.03%	100.00%
Under 18	127,435	420,936	548,371	23.24%	76.76%	100.00%
65+	55,020	236,145	291,165	18.90%	81.10%	100.00%

Source: US Bureau of the Census, 2000 Census of Population and Housing (Summary File 3).

Table IB-16b. Resident Population by Poverty Status and by Age, 2006

Miami-Dade County Age Categories	Income in 2006 - Poverty Status			Poverty Status (%)		
	Below	Above	Total	Below	Above	Total
Under 5 years	37,117	123,601	160,718	23.09%	76.91%	100.00%
5 years	4,802	23,203	28,005	17.15%	82.85%	100.00%
6 to 11 years	29,020	148,637	177,657	16.33%	83.67%	100.00%
12 to 17 years	39,701	158,162	197,863	20.06%	79.94%	100.00%
18 to 64 years	199,483	1,254,376	1,453,859	13.72%	86.28%	100.00%
65 to 74 years	34,848	139,907	174,755	19.94%	80.06%	100.00%
75 years and over	40,870	118,493	159,363	25.65%	74.35%	100.00%
Total	385,841	1,966,379	2,352,220	16.40%	83.60%	100.00%
Under 18	110,640	453,603	564,243	19.61%	80.39%	100.00%
65+	75,718	258,400	334,118	22.66%	77.34%	100.00%

Source: US Bureau of the Census, 2006 American Community Survey.

Table MDTAZ. Dwelling Unit, Population and Vehicle Estimates and Projections, 2006, 2010 and 2015

Population and Vehicles by Type of Dwelling Unit	2006	2010	2015
Site-Built Homes			
Total Units	923,279	951,961	992,852
Percent of Units Occupied during Hurricane Season	89.7%	89.8%	89.9%
Occupied Units	828,541	855,217	892,981
Persons per Occupied Unit	2.83	2.84	2.86
Population in Units	2,342,429	2,428,951	2,549,893
Vehicles per Unit	1.69	1.67	1.65
Vehicles in Units	1,398,596	1,430,457	1,477,844
Mobile Homes			
Total Units	12,467	12,536	12,701
Percent of Units Occupied during Hurricane Season	91.7%	91.7%	91.6%
Occupied Units	11,429	11,492	11,639
Persons per Occupied Unit	3.06	3.06	2.86
Population in Units	34,986	35,116	35,478
Vehicles per Unit	0.56	0.56	0.57
Vehicles in Units	19,631	19,769	20,046
Hotel-Motel Units			
Total Units	46,116	46,116	46,116
Percent of Units Occupied during Hurricane Season	75.1%	75.1%	75.1%
Occupied Units	34,618	34,618	34,618
Persons per Occupied Unit	1.46	1.46	1.46
Population in Units	50,545	50,545	50,545
Vehicles per Unit	1.05	1.05	1.05
Vehicles in Units	36,357	36,357	36,357
Group Quarters			
Population that would participate in general evacuation	0	0	0
Vehicles that would participate in a general evacuation	0	0	0
Totals			
Total Resident Population	2,377,415	2,464,067	2,585,371
Total Households	839,970	866,709	904,620
Total Vehicles	1,454,584	1,486,583	1,534,247

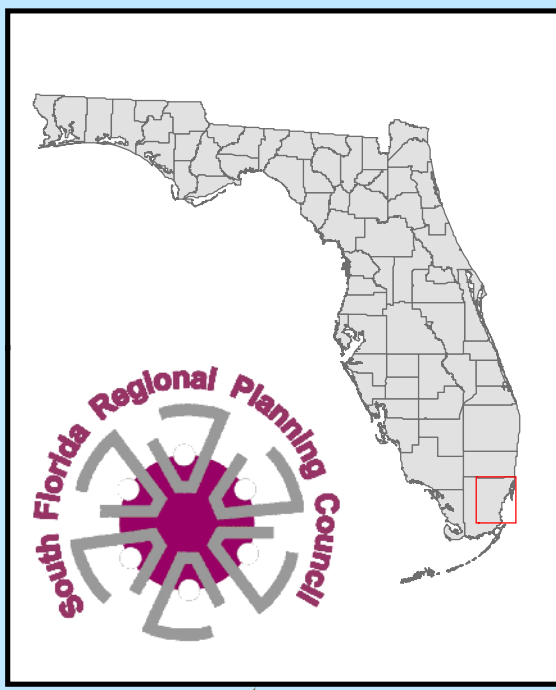
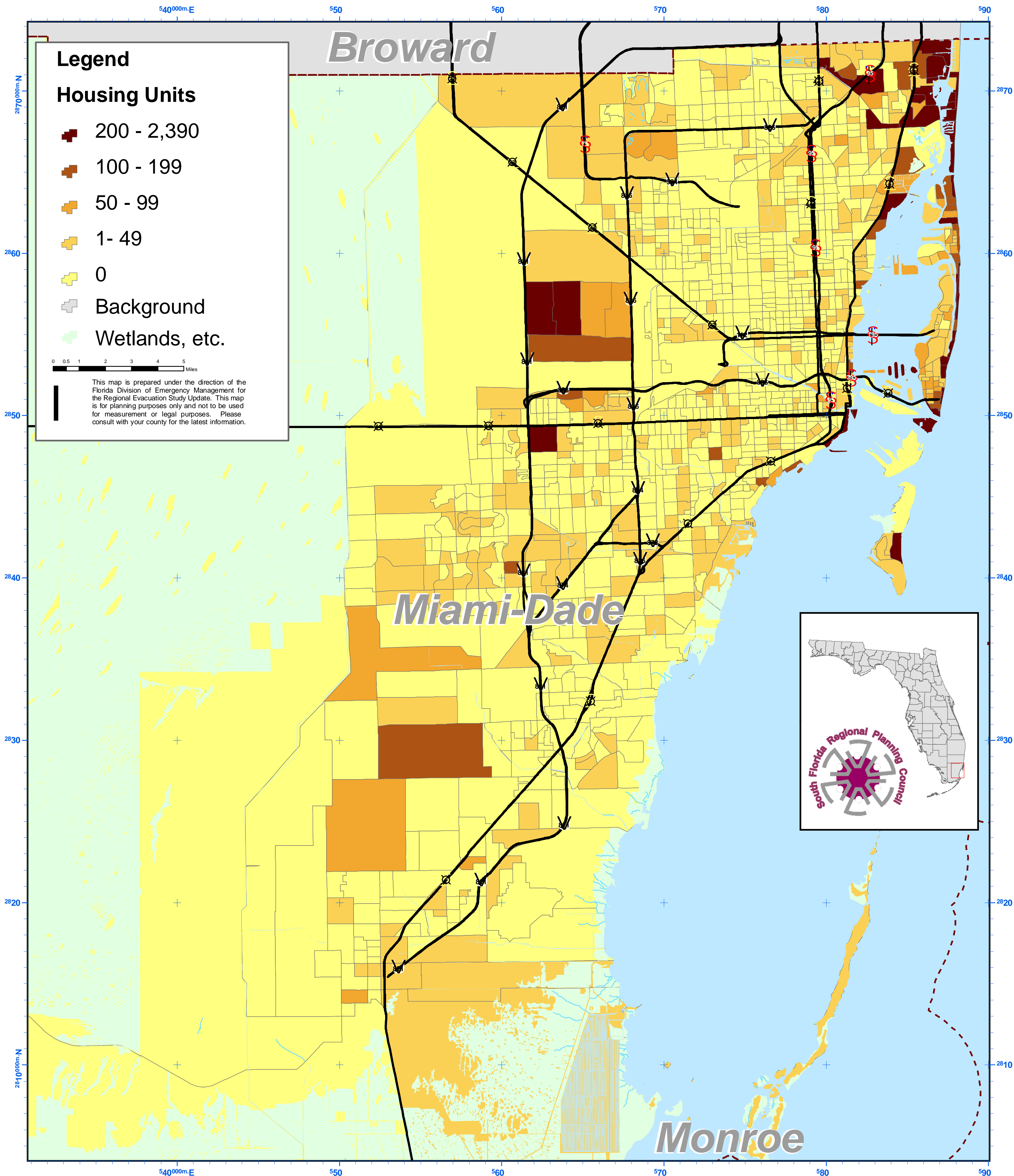
Table IB-17. Generalized Future Land Uses, 2006			
Code	Land Use Category	Acres	%
AG	Agriculture	81,859	5.3%
COM	Commercial / Office	23,801	1.5%
CONS	Conservation	821,662	52.8%
IND	Industrial	48,120	3.1%
MU	Mixed-Use	3,056	0.2%
PUB	Institutional, Government	12,414	0.8%
REC	Recreation / Open Space	77,588	5.0%
RH	Residential High Density	20,348	1.3%
RL	Residential Low Density	28,550	1.8%
RM	Residential Medium Density	127,959	8.2%
WAT	Water Bodies	310,467	20.0%
Total		1,555,825	100.0%

Source: Miami-Dade County, South Florida Water Management District, US Bureau of the Census



Miami-Dade County 2000 Census Block Group Data

Map H1 - Number of Vacant Seasonal Housing Units





Miami-Dade County 2000 Census Block Group Data

Map H2 - Percent of Housing Units that are Vacant



540000m.E 550 560 570 580 590

Legend

Percent Housing Units

- 11.1% - 100.0%
- 6.1% - 11.0%
- 3.1% - 6.0%
- 1.1% - 3.0%
- 0.0% - 1.0%
- Background
- Wetlands, etc.

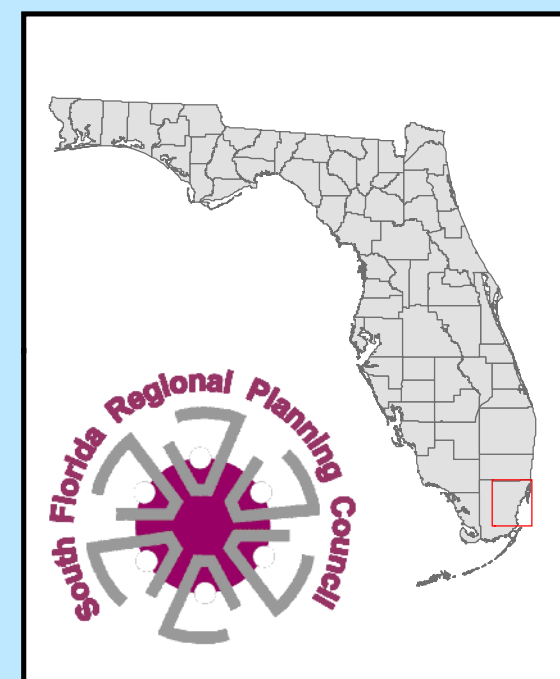
0 0.5 1 2 3 4 5 Miles

This map is prepared under the direction of the Florida Division of Emergency Management for the Regional Evacuation Study Update. This map is for planning purposes only and not to be used for measurement or legal purposes. Please consult with your county for the latest information.

Broward

Miami-Dade

Monroe



2870000m.N

2860

2850

2840

2830

2820

2810000m.N

2870

2860

2850

2840

2830

2820

2810

540000m.E 550 560 570 580 590



Miami-Dade County 2000 Census Block Group Data

Map H3 - Percent of Housing Units that are Vacant Seasonal



540000m.E 550 560 570 580 590

Legend

Percent Housing Units

- 10.0% - 57.0%
- 5.0% - 9.9%
- 2.0% - 4.9%
- 0.1% - 1.9%
- 0.0%
- Background
- Wetlands, etc.

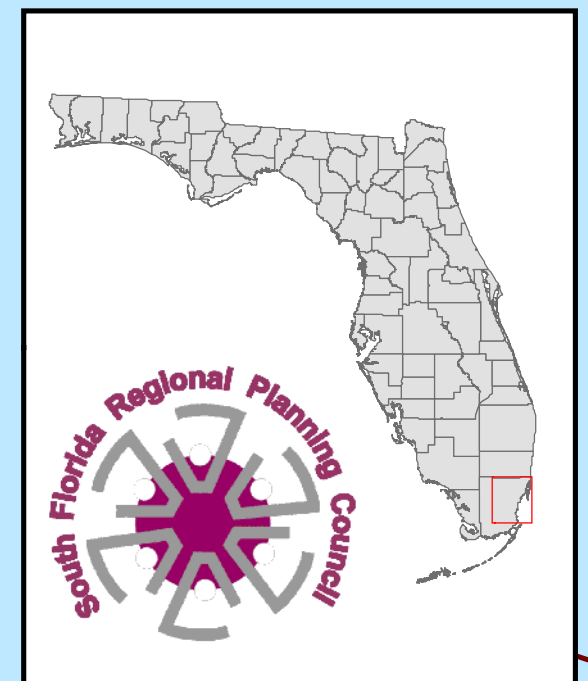
0 0.5 1 2 3 4 5 Miles

This map is prepared under the direction of the Florida Division of Emergency Management for the Regional Evacuation Study Update. This map is for planning purposes only and not to be used for measurement or legal purposes. Please consult with your county for the latest information.

Broward

Miami-Dade

Monroe



2870000m.N

2860

2850

2840

2830

2820

2810000m.N

2870

2860

2850

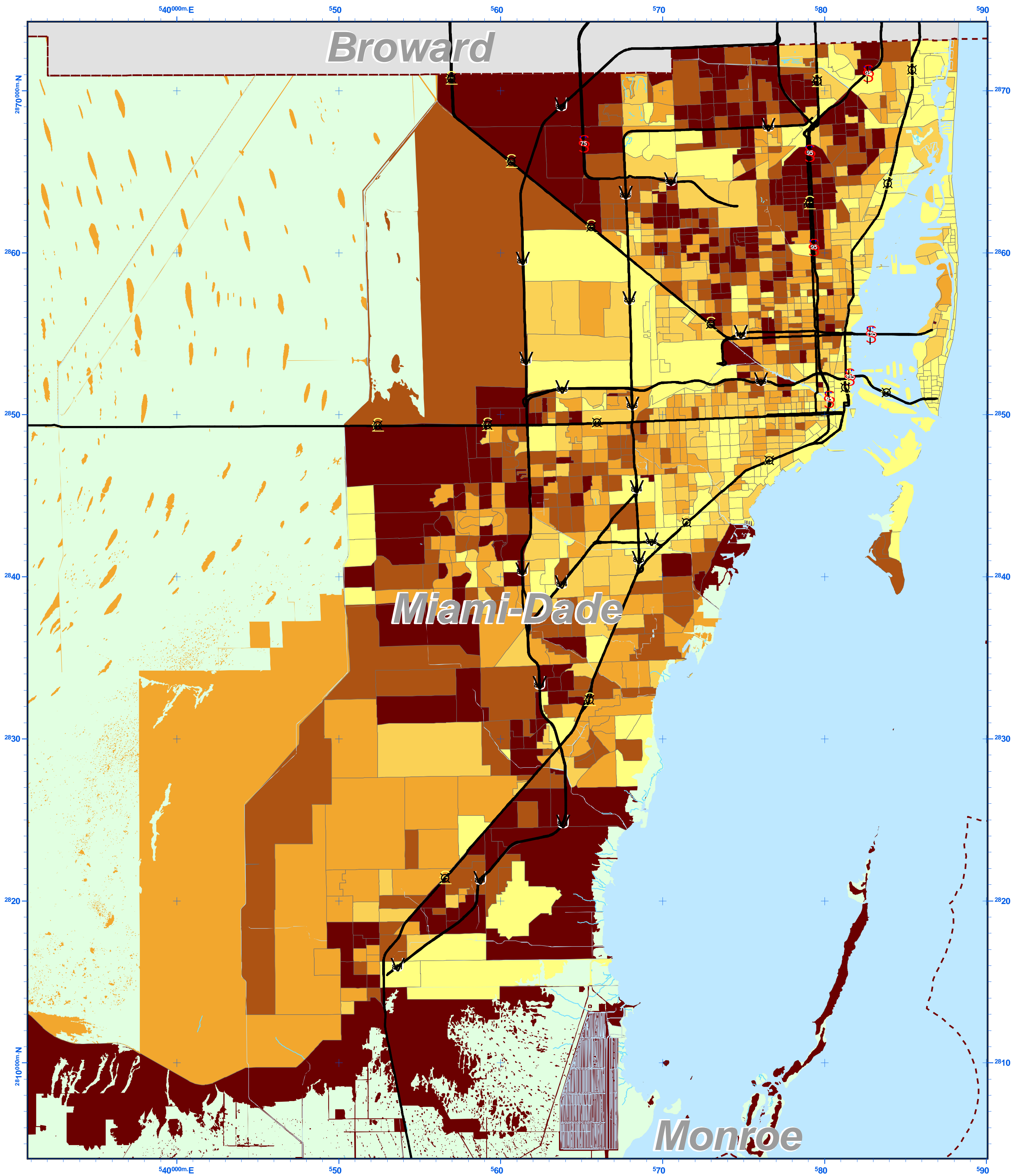
2840

2830

2820

2810

540000m.E 550 560 570 580 590



Broward

Miami-Dade

Monroe

540000m.E

550

560

570

580

590

2870000m.N

2870

2860

2860

2850

2850

2840

2840

2830

2830

2820

2820

2810000m.N

2810

540000m.E

550

560

570

580

590



Miami-Dade County 2000 Census Block Group Data

Map H5 - Number of Mobile Homes



540000m.E 550 560 570 580 590

2870000m.N

2860

2850

2840

2830

2820

2810000m.N

2870

2860

2850

2840

2830

2820

2810

Legend

Units

- 250 - 1,347
- 100 - 249
- 20 - 99
- 1 - 19
- 0
- Background
- Wetlands, etc.

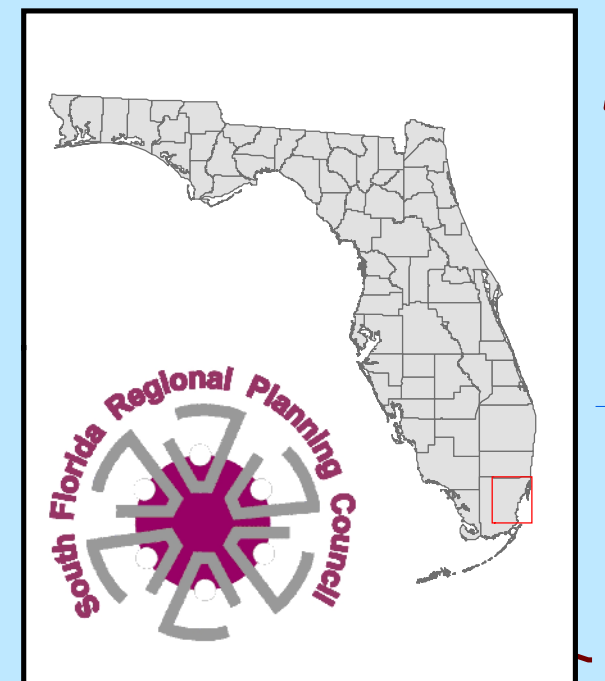
0 0.5 1 2 3 4 5 Miles

This map is prepared under the direction of the Florida Division of Emergency Management for the Regional Evacuation Study Update. This map is for planning purposes only and not to be used for measurement or legal purposes. Please consult with your county for the latest information.

Broward

Miami-Dade

Monroe





Miami-Dade County 2000 Census Block Group Data

Map H6 - Number of Boats, Recreational Vehicles and Vans



540000m.E 550 560 570 580 590

Legend

Units

- 50 - 271
- 20 - 49
- 10 - 19
- 1 - 9
- 0
- Background
- Wetlands, etc.

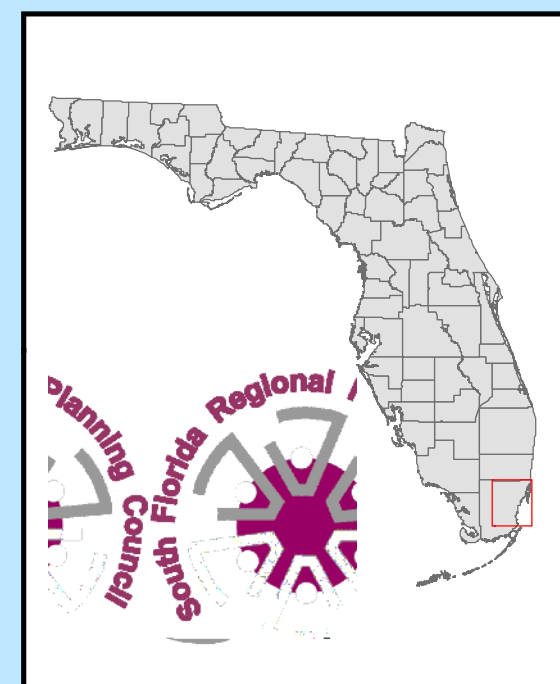
0 0.5 1 2 3 4 5 Miles

This map is prepared under the direction of the Florida Division of Emergency Management for the Regional Evacuation Study Update. This map is for planning purposes only and not to be used for measurement or legal purposes. Please consult with your county for the latest information.

Broward

Miami-Dade

Monroe



2870000m.N

2860

2850

2840

2830

2820

2810000m.N

2870

2860

2850

2840

2830

2820

2810



Miami-Dade County 2000 Census Block Group Data

Map H7 - Percent of Mobile Homes that are Vacant



540000m.E 550 560 570 580 590

2870000m.N
2860
2850
2840
2830
2820
2810000m.N

Legend

Percent Units

- 30.0% - 100.0%
- 20.0% - 29.9%
- 10.0% - 19.9%
- 0.1% - 9.9%
- 0.0%
- Background
- Wetlands, etc.

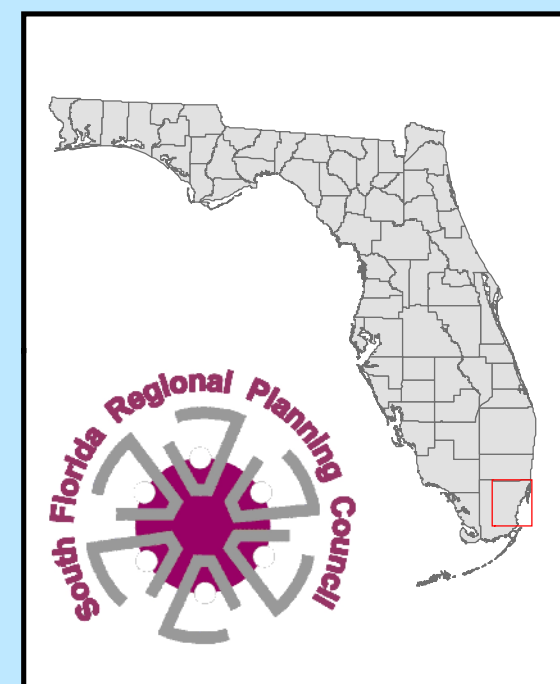
0 0.5 1 2 3 4 5 Miles

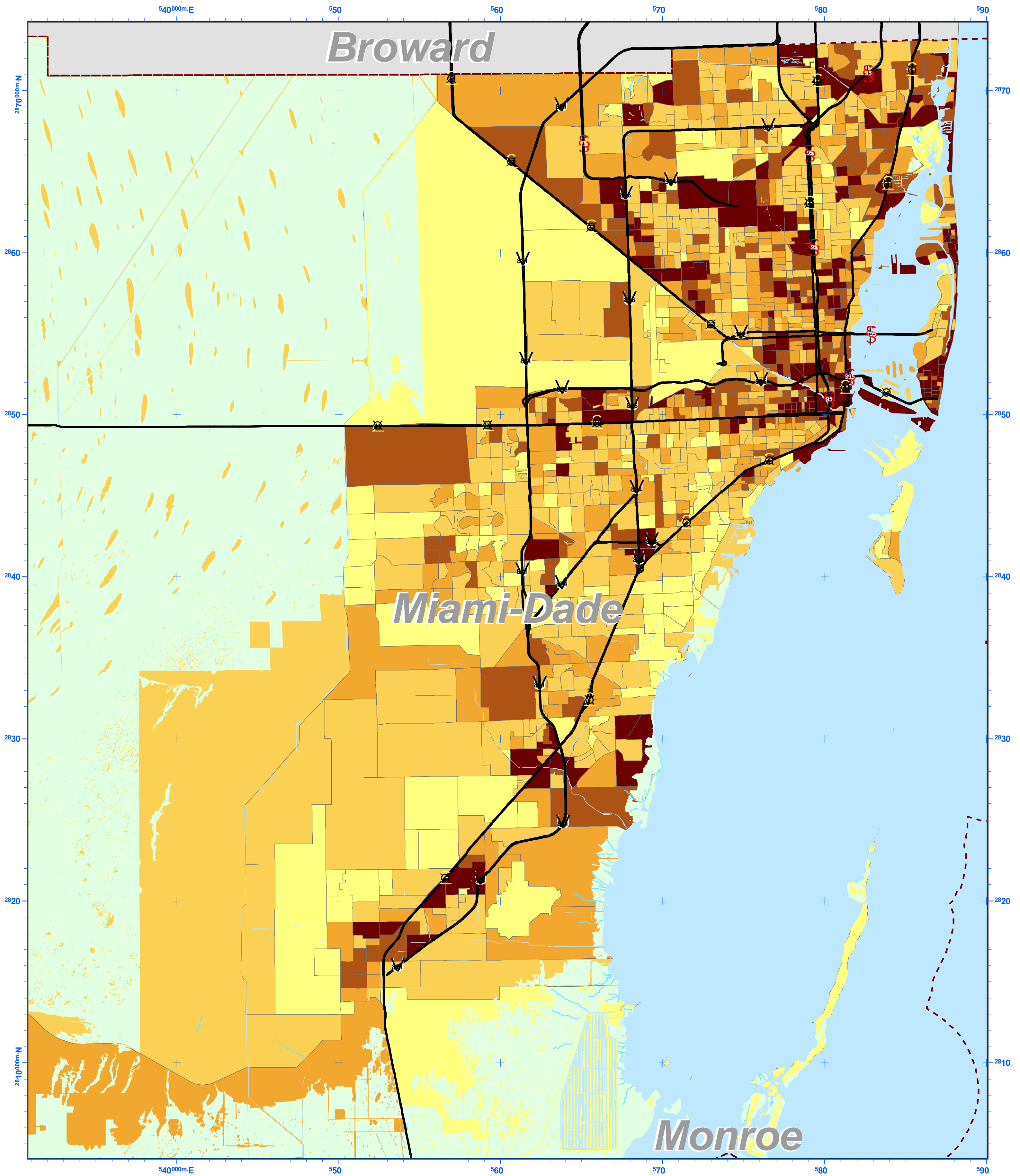
This map is prepared under the direction of the Florida Division of Emergency Management for the Regional Evacuation Study Update. This map is for planning purposes only and not to be used for measurement or legal purposes. Please consult with your county for the latest information.

Broward

Miami-Dade

Monroe





Broward

Miami-Dade

Monroe

540000m.E

550

560

570

580

590

2870000m.N

2870

2860

2860

2850

2850

2840

2840

2830

2830

2820

2820

2810000m.N

2810

540000m.E

550

560

570

580

590



Miami-Dade County 2000 Census Block Group Data

Map H9 - Average Number of Vehicles per Household



540000m.E 550 560 570 580 590

Legend

Vehicles

- 1.95 - 4.05
- 1.70 - 1.94
- 1.43 - 1.69
- 1.10 - 1.42
- 0.00 - 1.09

Background

Wetlands, etc.

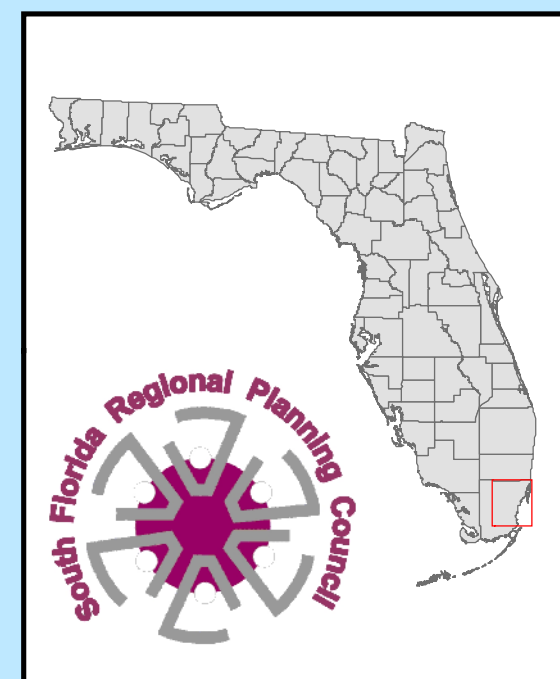
0 0.5 1 2 3 4 5 Miles

This map is prepared under the direction of the Florida Division of Emergency Management for the Regional Evacuation Study Update. This map is for planning purposes only and not to be used for measurement or legal purposes. Please consult with your county for the latest information.

Broward

Miami-Dade

Monroe



2870000m.N

2860

2850

2840

2830

2820

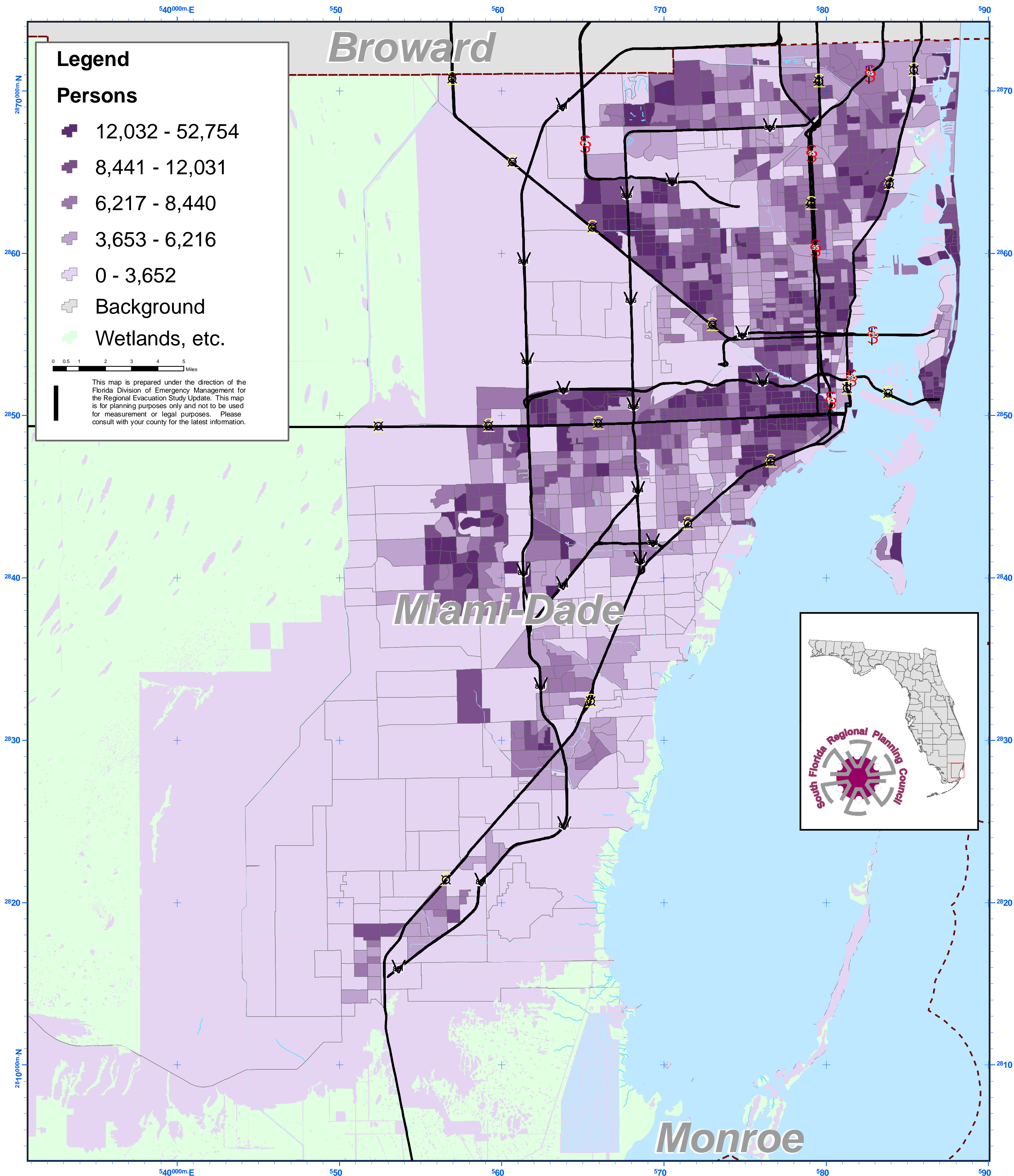
2810000m.N

540000m.E 550 560 570 580 590



Miami-Dade County 2000 Census Block Group Data

Map P1 - Residents per square mile





Miami-Dade County 2000 Census Block Group Data

Map P2 - Percent of Population Under Age 5



540000m.E 550 560 570 580 590

2870000m.N
2860
2850
2840
2830
2820
2810

Legend

Percent Population

- 10.1% - 41.0%
- 8.1% - 10.0%
- 6.1% - 8.0%
- 4.1% - 6.0%
- 0% - 4.0%
- Background
- Wetlands, etc.

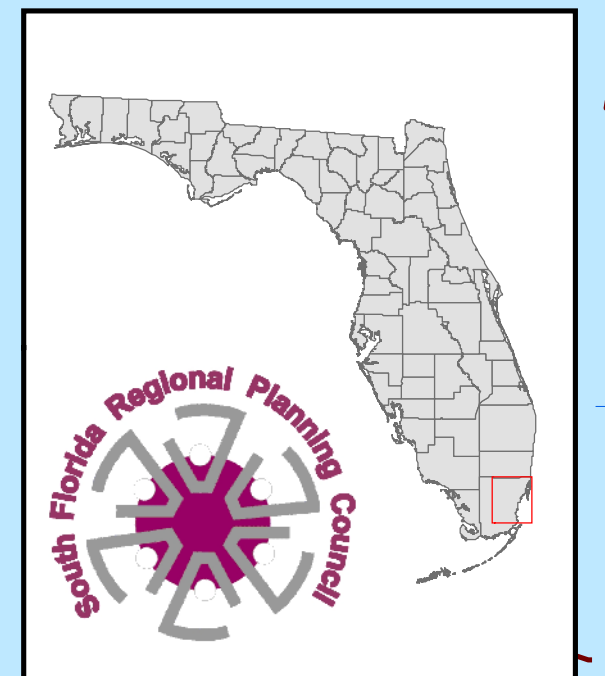
0 0.5 1 2 3 4 5 Miles

This map is prepared under the direction of the Florida Division of Emergency Management for the Regional Evacuation Study Update. This map is for planning purposes only and not to be used for measurement or legal purposes. Please consult with your county for the latest information.

Broward

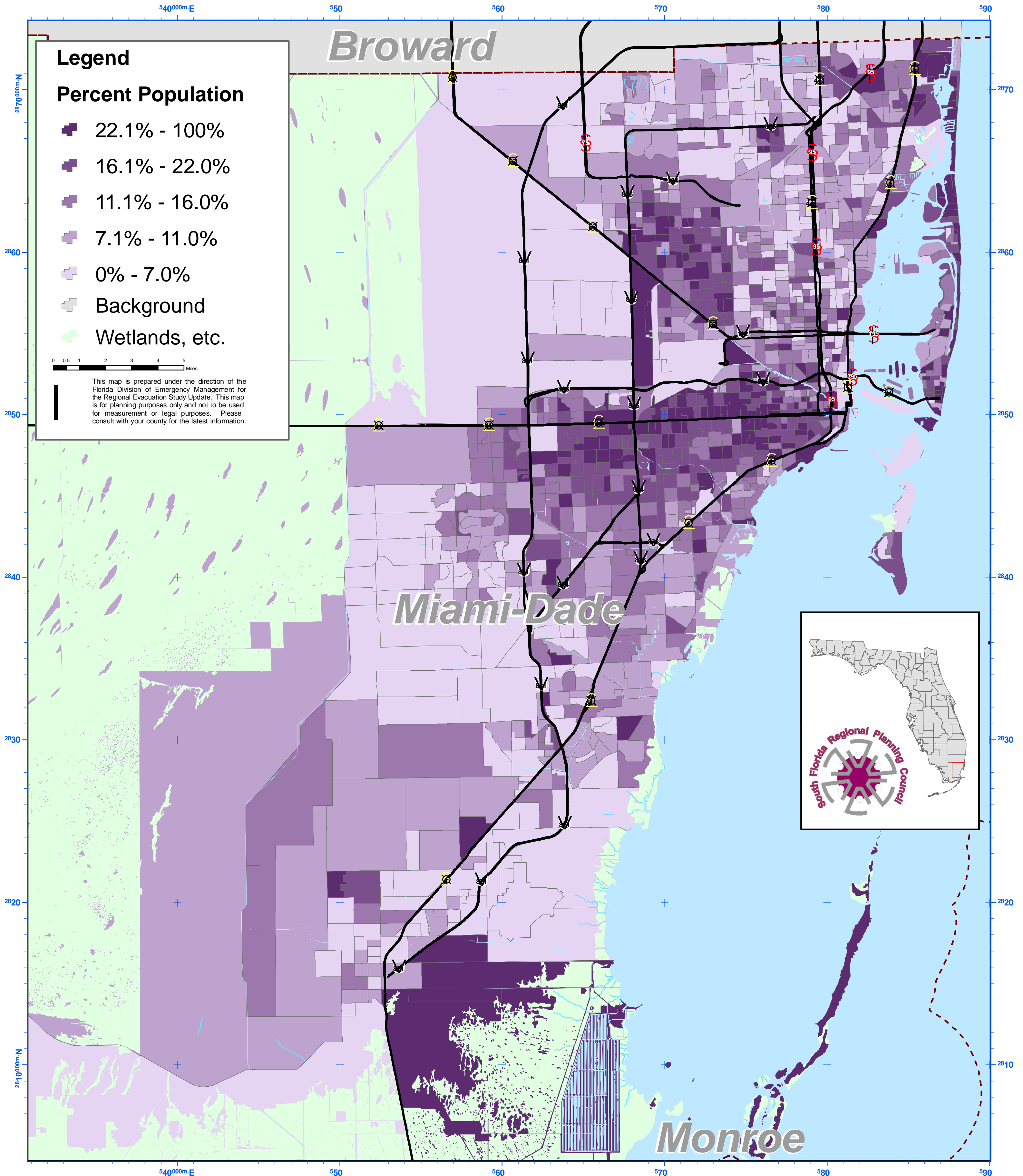
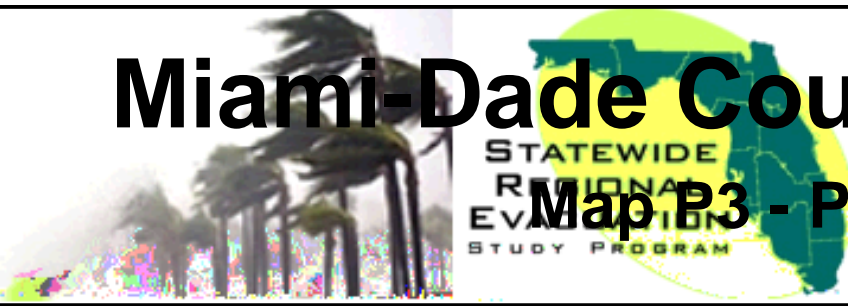
Miami-Dade

Monroe



Miami-Dade County 2000 Census Block Group Data

Map P3 - Percent of Population 65 Years or Over





Miami-Dade County 2000 Census Block Group Data

Map P4 - Population Living Alone



540000m.E 550 560 570 580 590

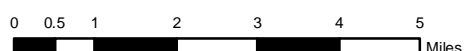
Legend

Population

- 213 - 1,737
- 108 - 212
- 64 - 107
- 33 - 63
- 0 - 32

Background

Wetlands, etc.

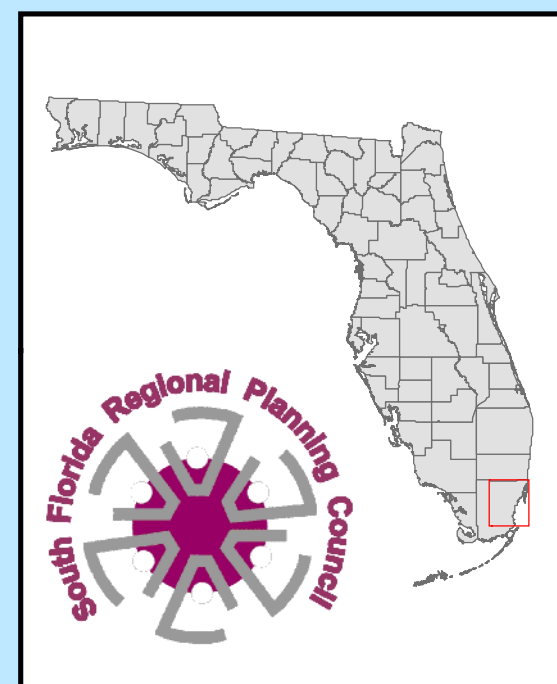


This map is prepared under the direction of the Florida Division of Emergency Management for the Regional Evacuation Study Update. This map is for planning purposes only and not to be used for measurement or legal purposes. Please consult with your county for the latest information.

Broward

Miami-Dade

Monroe



540000m.E 550 560 570 580 590



Miami-Dade County 2000 Census Block Group Data

Map P5 - Percent of Population Living in Group Quarters



540000m.E 550 560 570 580 590

2870000m.N

2860

2850

2840

2830

2820

2810000m.N

2870

2860

2850

2840

2830

2820

2810

Legend

Percent Population

- 10.0% - 100%
- 2.5% - 9.9%
- 1.0% - 2.4%
- 0.1% - 0.9%
- 0%
- Background
- Wetlands, etc.

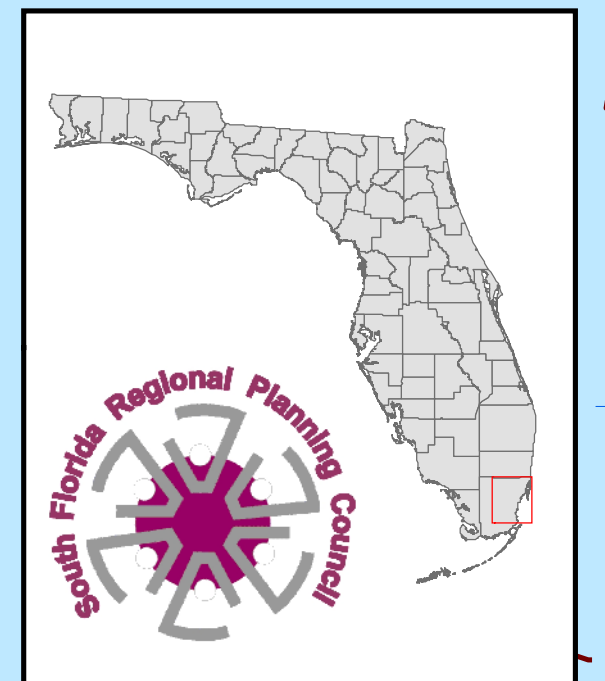
0 0.5 1 2 3 4 5 Miles

This map is prepared under the direction of the Florida Division of Emergency Management for the Regional Evacuation Study Update. This map is for planning purposes only and not to be used for measurement or legal purposes. Please consult with your county for the latest information.

Broward

Miami-Dade

Monroe





Miami-Dade County 2000 Census Block Group Data

Map P6 - Population Over Age 65 Living Alone



540000m.E 550 560 570 580 590

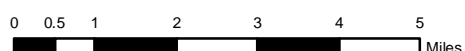
Legend

Population

- 78 - 1,052
- 41 - 77
- 22 - 40
- 10 - 21
- 0 - 9

Background

Wetlands, etc.

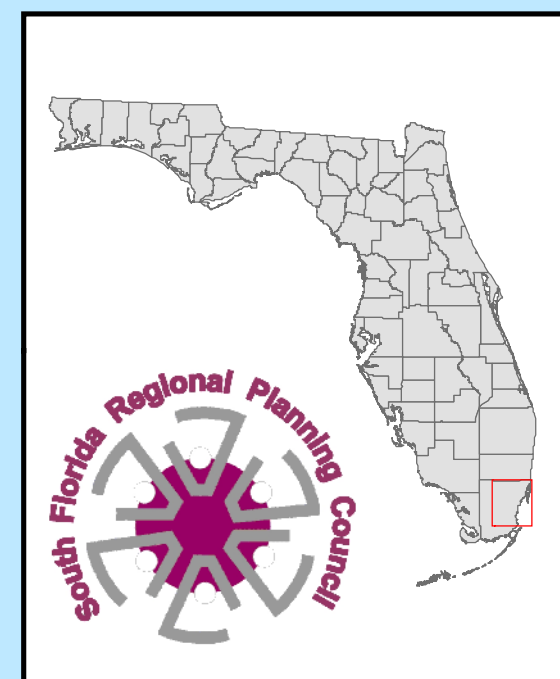


This map is prepared under the direction of the Florida Division of Emergency Management for the Regional Evacuation Study Update. This map is for planning purposes only and not to be used for measurement or legal purposes. Please consult with your county for the latest information.

Broward

Miami-Dade

Monroe





Miami-Dade County 2000 Census Block Group Data

Map P7 - Percent of Population Over Age 65 Living Alone



540000m.E 550 560 570 580 590

Legend

Percent Population

- 6.1% - 100%
- 3.1% - 6.0%
- 1.1% - 3.0%
- 0.1% - 1.0%
- 0%
- Background
- Wetlands, etc.

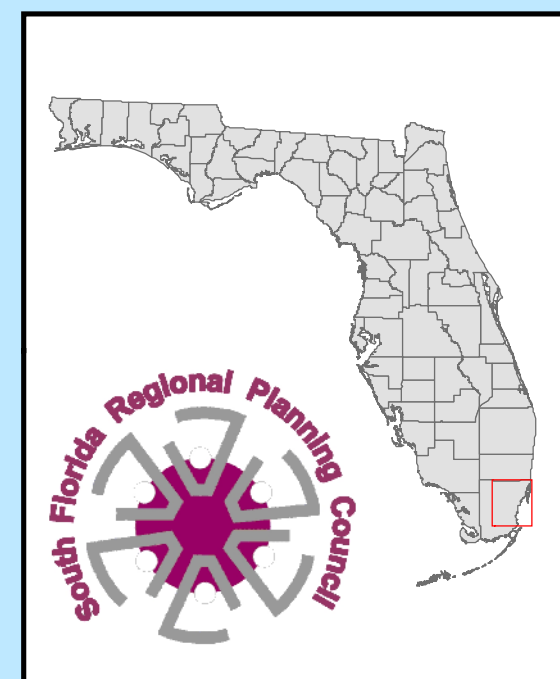
0 0.5 1 2 3 4 5 Miles

This map is prepared under the direction of the Florida Division of Emergency Management for the Regional Evacuation Study Update. This map is for planning purposes only and not to be used for measurement or legal purposes. Please consult with your county for the latest information.

Broward

Miami-Dade

Monroe



2870000m.N

2860

2850

2840

2830

2820

2810000m.N

2870

2860

2850

2840

2830

2820

2810

540000m.E 550 560 570 580 590



Miami-Dade County 2000 Census Block Group Data

Map P8 - Number of Linguistically Isolated Households - Other Languages



540000m.E 550 560 570 580 590

Legend

Households

- 100 - 451
- 50 - 99
- 10 - 49
- 1 - 9
- 0

Background

Wetlands, etc.

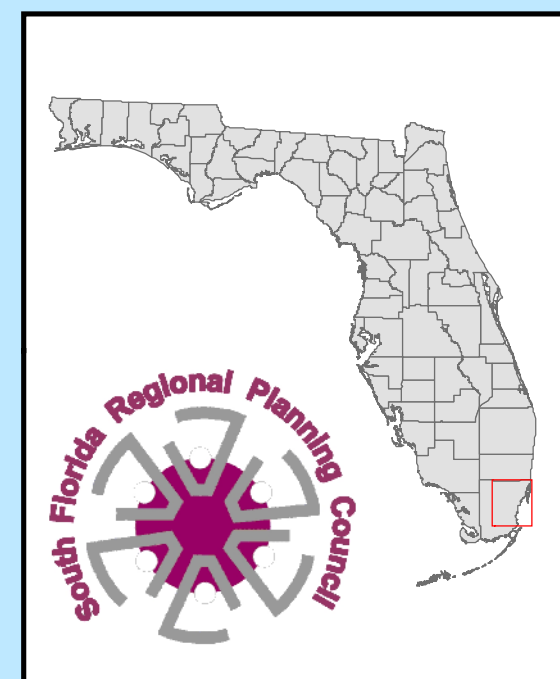
0 0.5 1 2 3 4 5 Miles

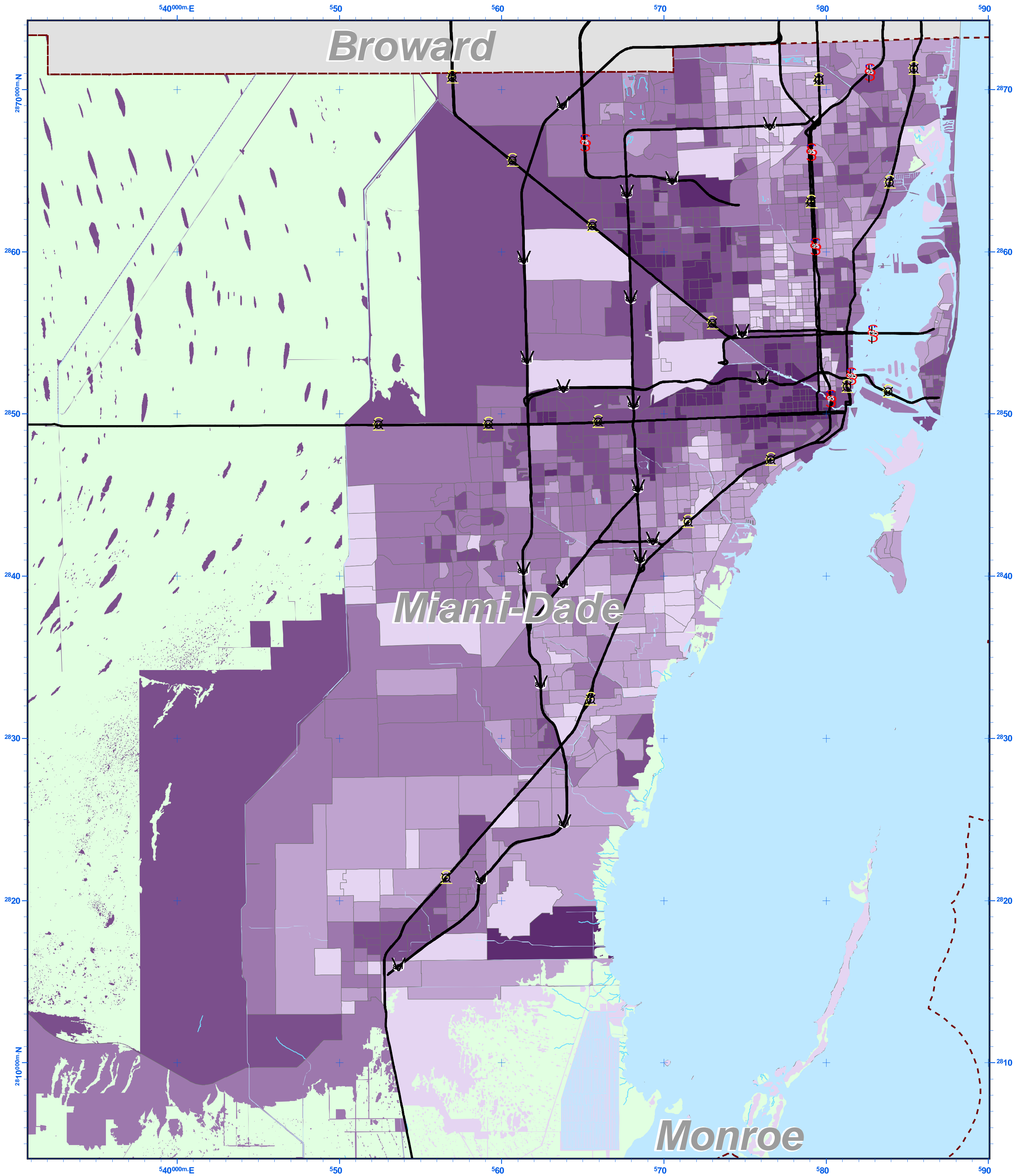
This map is prepared under the direction of the Florida Division of Emergency Management for the Regional Evacuation Study Update. This map is for planning purposes only and not to be used for measurement or legal purposes. Please consult with your county for the latest information.

Broward

Miami-Dade

Monroe

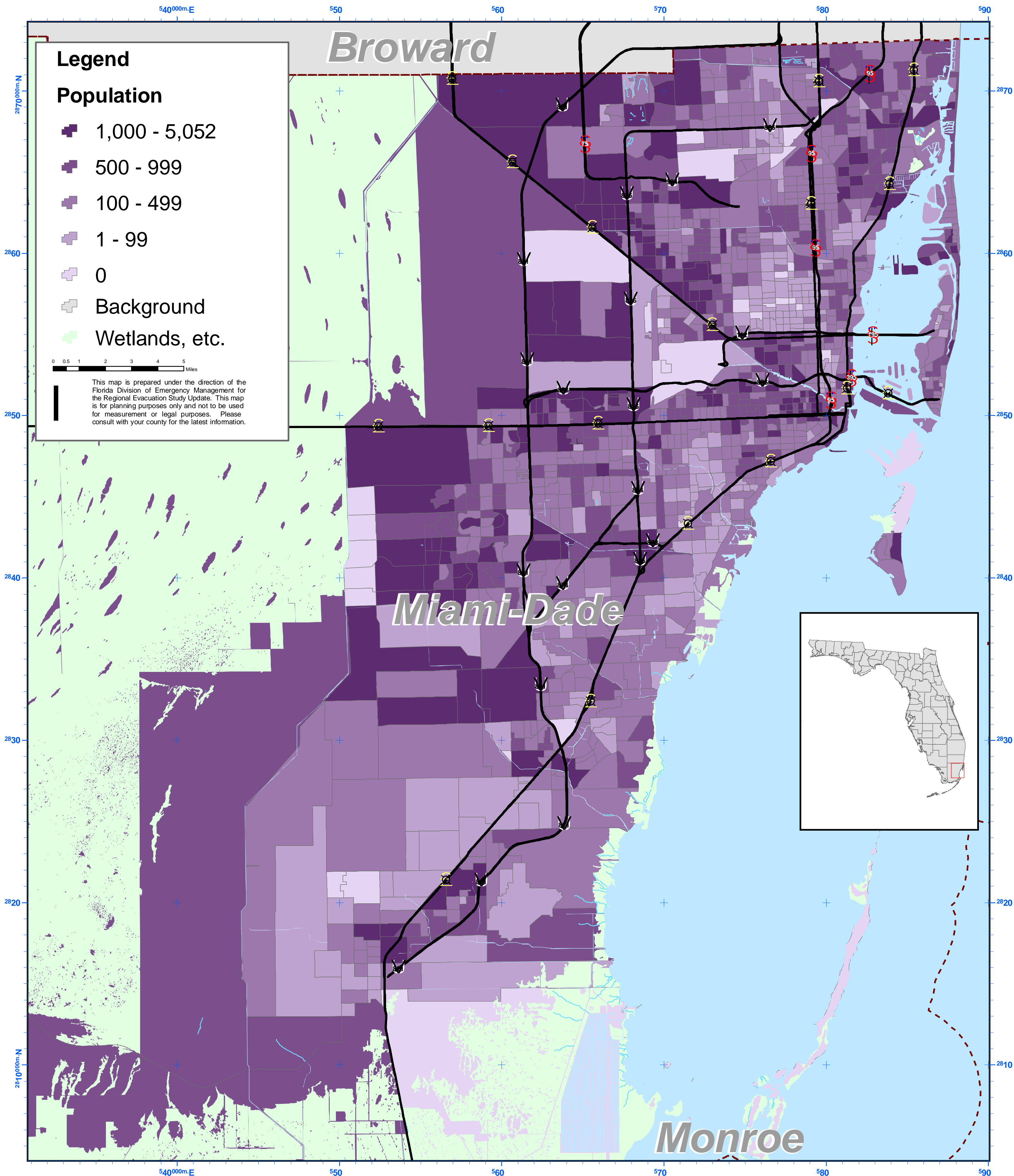






Miami-Dade County 2000 Census Block Group Data

Map P10 - Population Foreign Born - Not Citizens





Miami-Dade County 2000 Census Block Group Data








Map P11 - Percent of Population that is Foreign Born



540000m.E 550 560 570 580 590

Legend

Percent Population

-  71.1% - 100%
-  56.1% - 71.0%
-  43.1% - 56.0%
-  26.1% - 43.0%
-  0% - 26.0%
-  Background
-  Wetlands, etc.

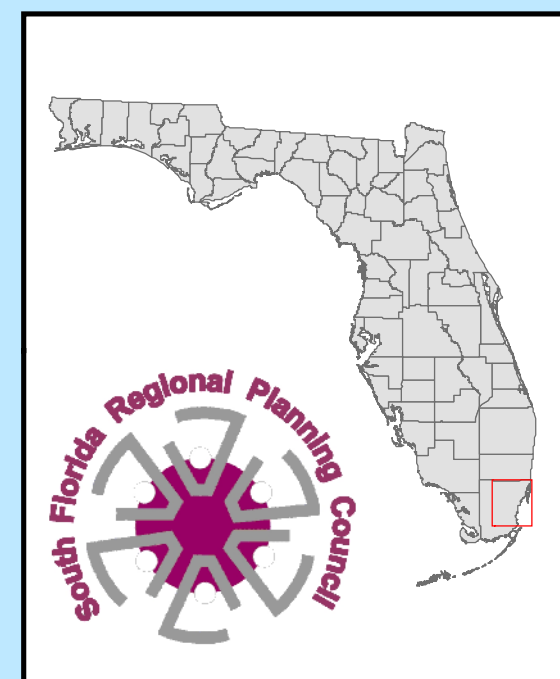
0 0.5 1 2 3 4 5 Miles

This map is prepared under the direction of the Florida Division of Emergency Management for the Regional Evacuation Study Update. This map is for planning purposes only and not to be used for measurement or legal purposes. Please consult with your county for the latest information.

Broward

Miami-Dade

Monroe



N

2870000m.N

2860

2850

2840

2830

2820

2810000m.N

2810

540000m.E

550

560

570

580

590

2870

2860

2850

2840

2830

2820

2810



Miami-Dade County 2000 Census Block Group Data

Map P12 - Percent of Population Over Age 65 With Disability



540000m.E 550 560 570 580 590

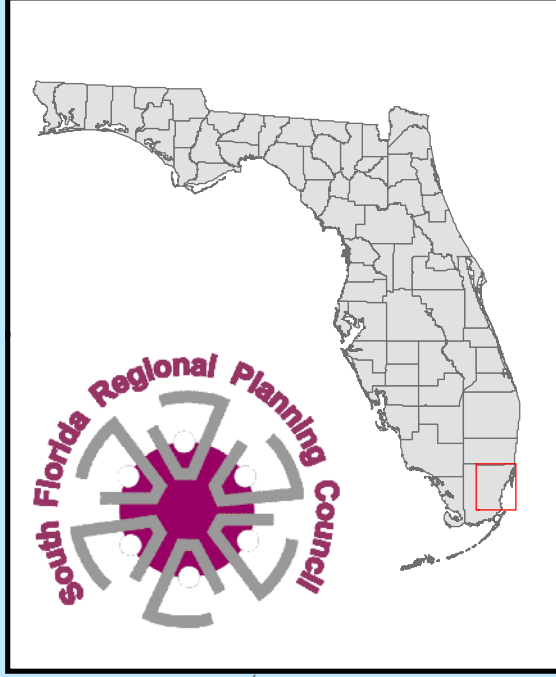
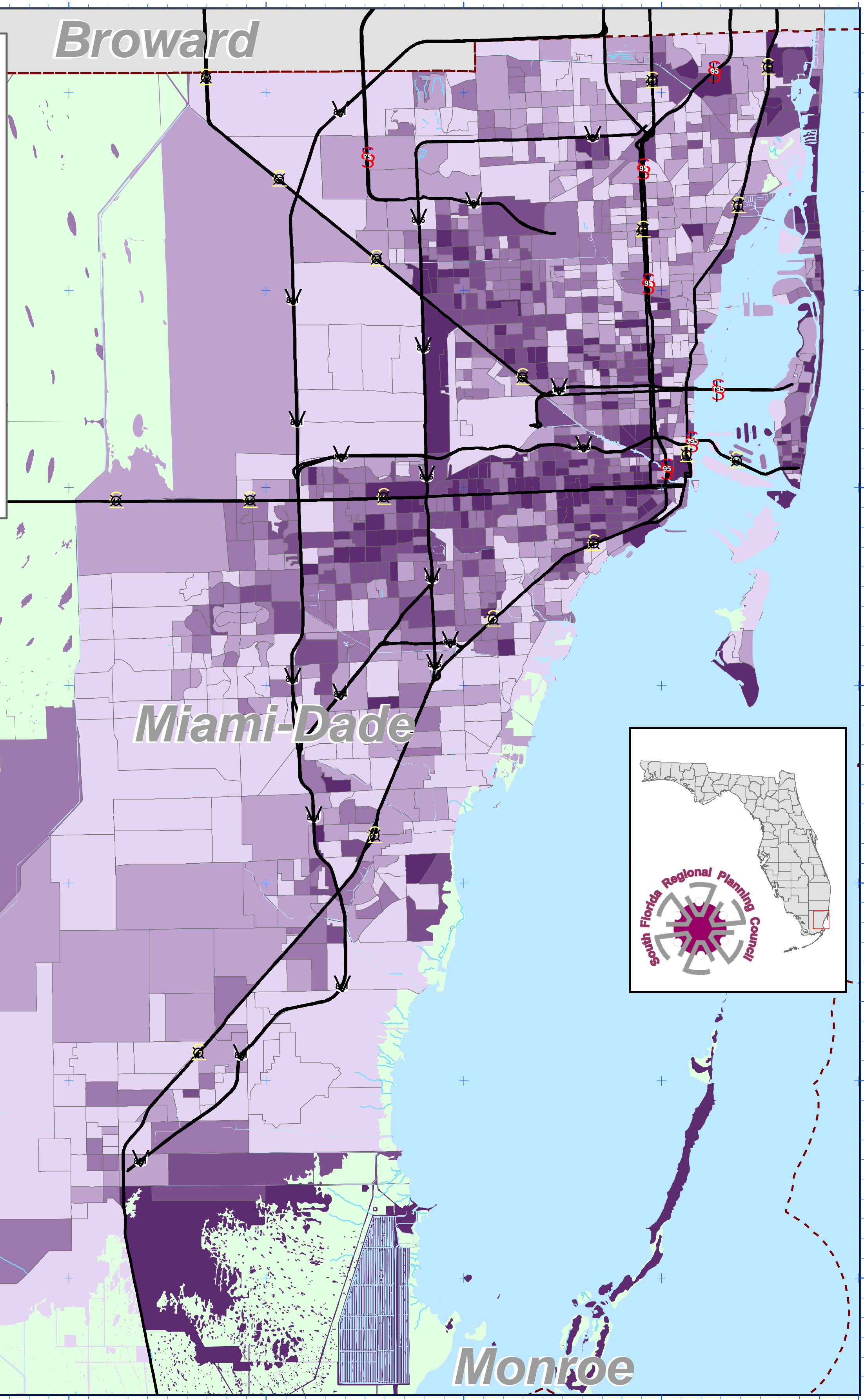
Legend

Percent Population

- 11.1% - 100%
- 8.1% - 11.0%
- 5.1% - 8.0%
- 3.1% - 5.0%
- 0% - 3.0%
- Background
- Wetlands, etc.

0 0.5 1 2 3 4 5 Miles

This map is prepared under the direction of the Florida Division of Emergency Management for the Regional Evacuation Study Update. This map is for planning purposes only and not to be used for measurement or legal purposes. Please consult with your county for the latest information.



540000m.E 550 560 570 580 590



Miami-Dade County 2000 Census Block Group Data

Map P13 - Percent of Population that is Unemployed



540000m.E 550 560 570 580 590

2870000m.N 2860 2850 2840 2830 2820 2810

Legend

Percent Population

- 15.1% - 77.0%
- 10.1% - 15.0%
- 7.1% - 10.0%
- 4.1% - 7.0%
- 0% - 4.0%
- Background
- Wetlands, etc.

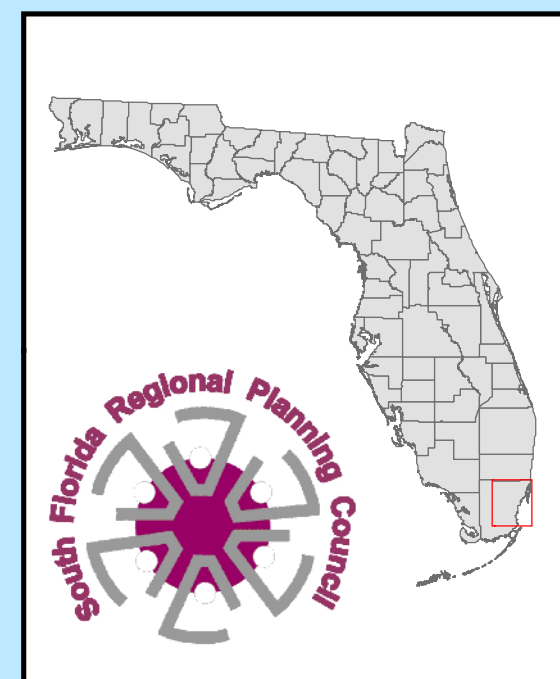
0 0.5 1 2 3 4 5 Miles

This map is prepared under the direction of the Florida Division of Emergency Management for the Regional Evacuation Study Update. This map is for planning purposes only and not to be used for measurement or legal purposes. Please consult with your county for the latest information.

Broward

Miami-Dade

Monroe





Miami-Dade County 2000 Census Block Group Data

Map P14 - Percent of Population in the Labor Force



540000m.E 550 560 570 580 590

Legend

Percent Population

- 67.1% - 100%
- 61.1% - 67.0%
- 55.1% - 61.0%
- 48.1% - 55.0%
- 0% - 48.0%
- Background
- Wetlands, etc.

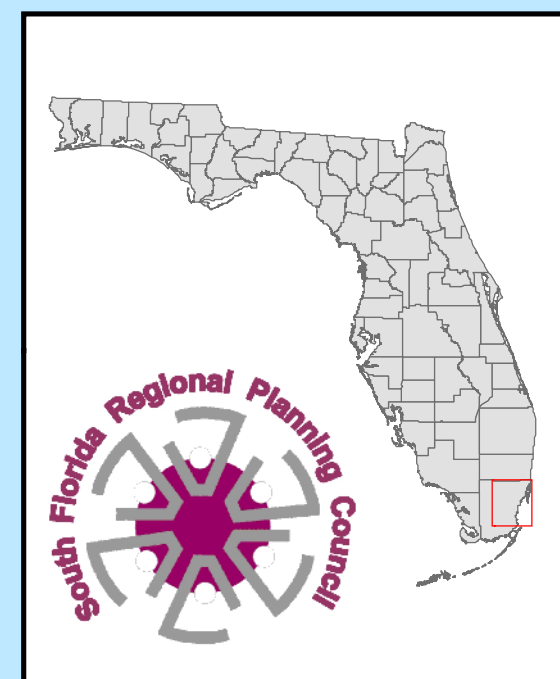
0 0.5 1 2 3 4 5 Miles

This map is prepared under the direction of the Florida Division of Emergency Management for the Regional Evacuation Study Update. This map is for planning purposes only and not to be used for measurement or legal purposes. Please consult with your county for the latest information.

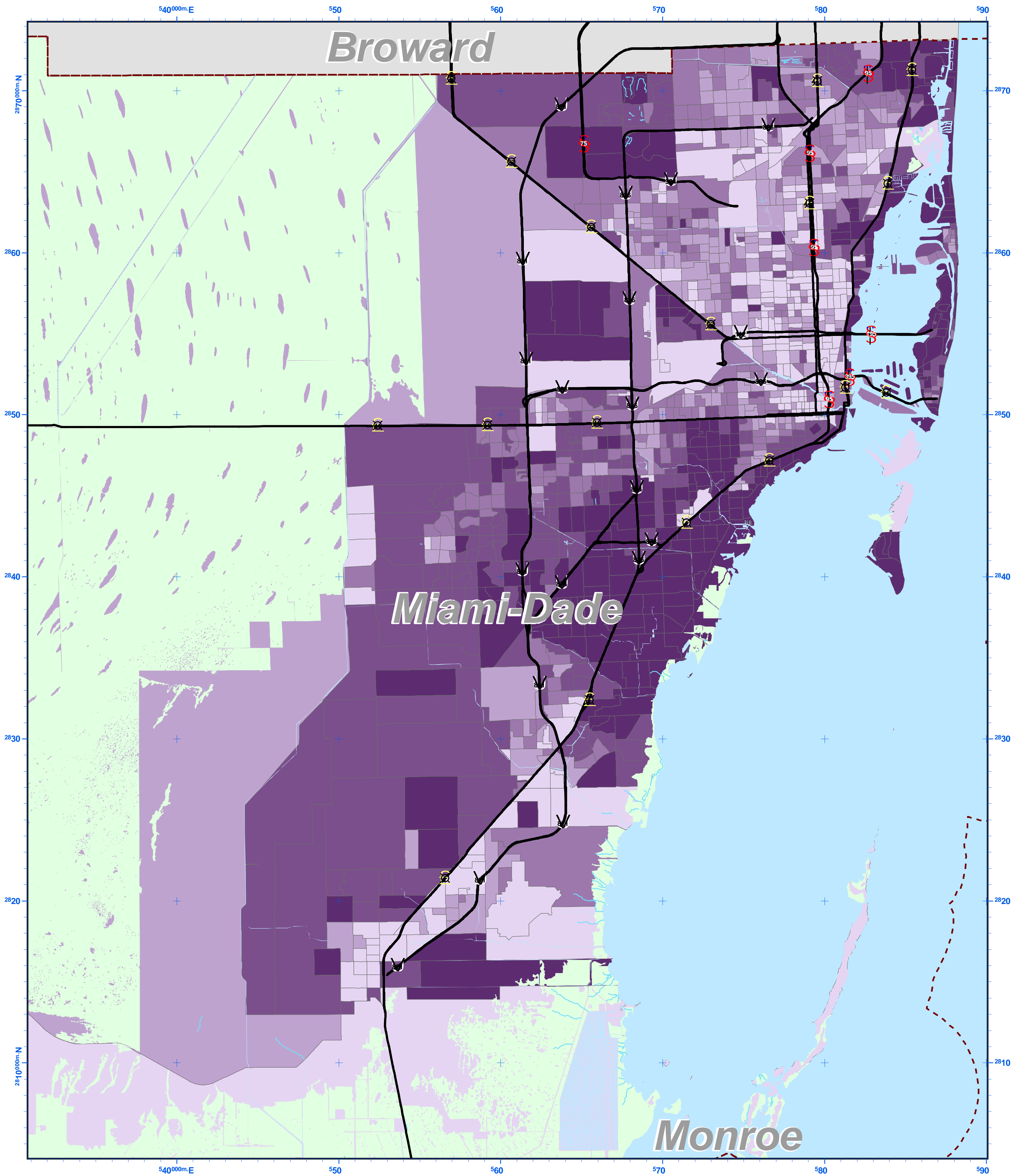
Broward

Miami-Dade

Monroe



540000m.E 550 560 570 580 590





Miami-Dade County 2000 Census Block Group Data

Map P16 - Percent of Population 65 Years or Over Below Poverty



540000m.E 550 560 570 580 590

Legend

Percent Population

- 25.0% - 100%
- 10.0% - 24.9%
- 5.0% - 9.9%
- 0.1% - 4.9%
- 0%
- Background
- Wetlands, etc.

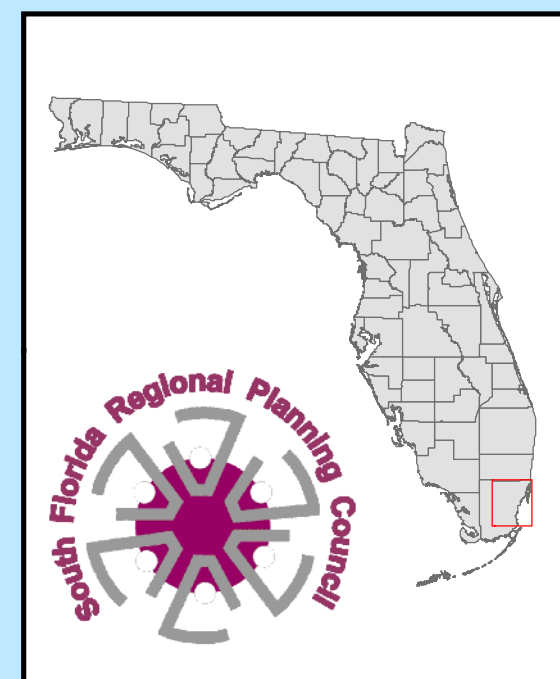
0 0.5 1 2 3 4 5 Miles

This map is prepared under the direction of the Florida Division of Emergency Management for the Regional Evacuation Study Update. This map is for planning purposes only and not to be used for measurement or legal purposes. Please consult with your county for the latest information.

Broward

Miami-Dade

Monroe



2870000m.N

2870

2860

2860

2850

2850

2840

2840

2830

2830

2820

2820

2810000m.N

2810

540000m.E 550 560 570 580 590

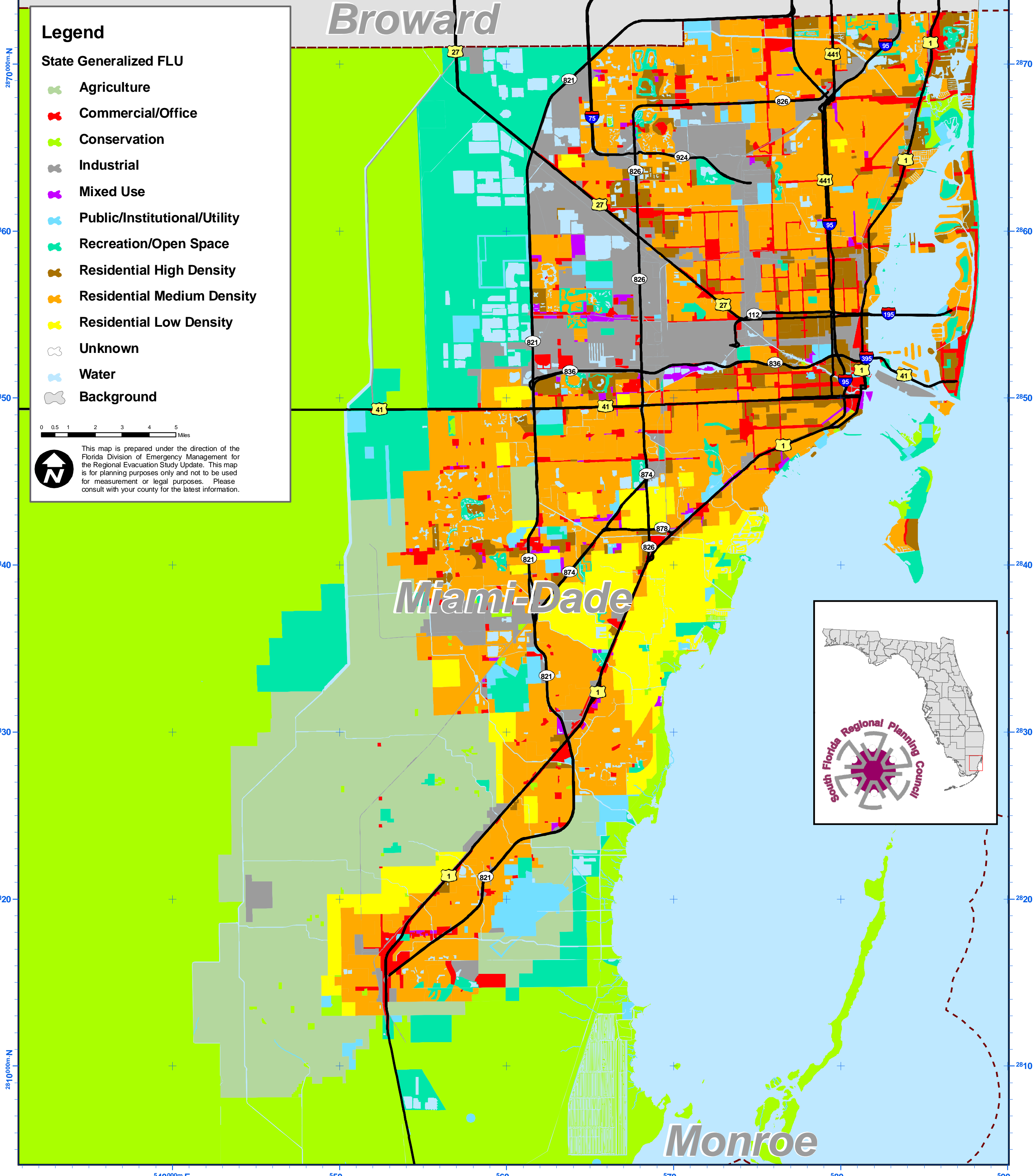


Statewide Generalized Future Land Use

Miami-Dade County



540000m.E 550 560 570 580 590



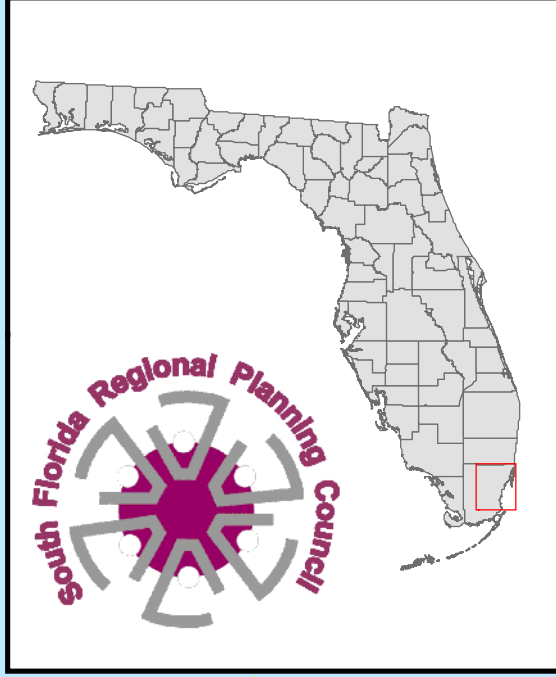
Legend

State Generalized FLU

- Agriculture
- Commercial/Office
- Conservation
- Industrial
- Mixed Use
- Public/Institutional/Utility
- Recreation/Open Space
- Residential High Density
- Residential Medium Density
- Residential Low Density
- Unknown
- Water
- Background

0 0.5 1 2 3 4 5 Miles

This map is prepared under the direction of the Florida Division of Emergency Management for the Regional Evacuation Study Update. This map is for planning purposes only and not to be used for measurement or legal purposes. Please consult with your county for the latest information.



540000m.E 550 560 570 580 590

