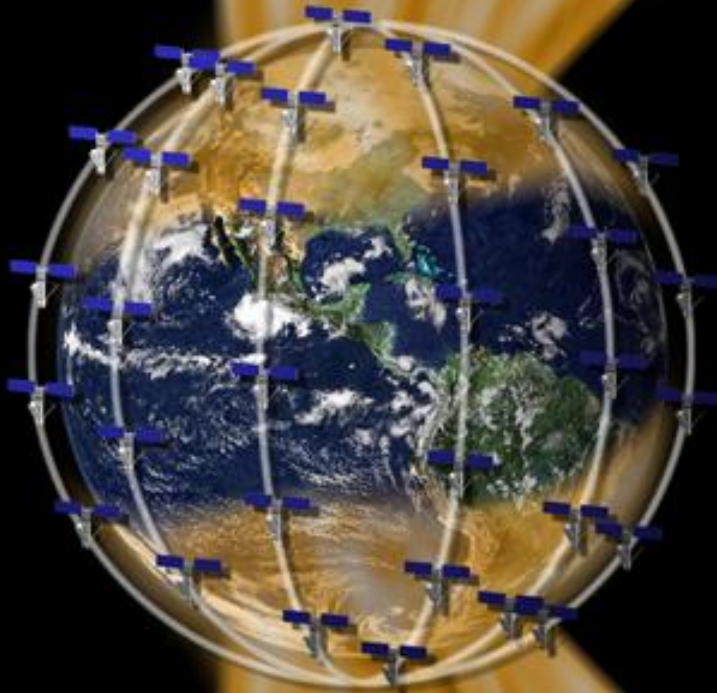


AMPERE

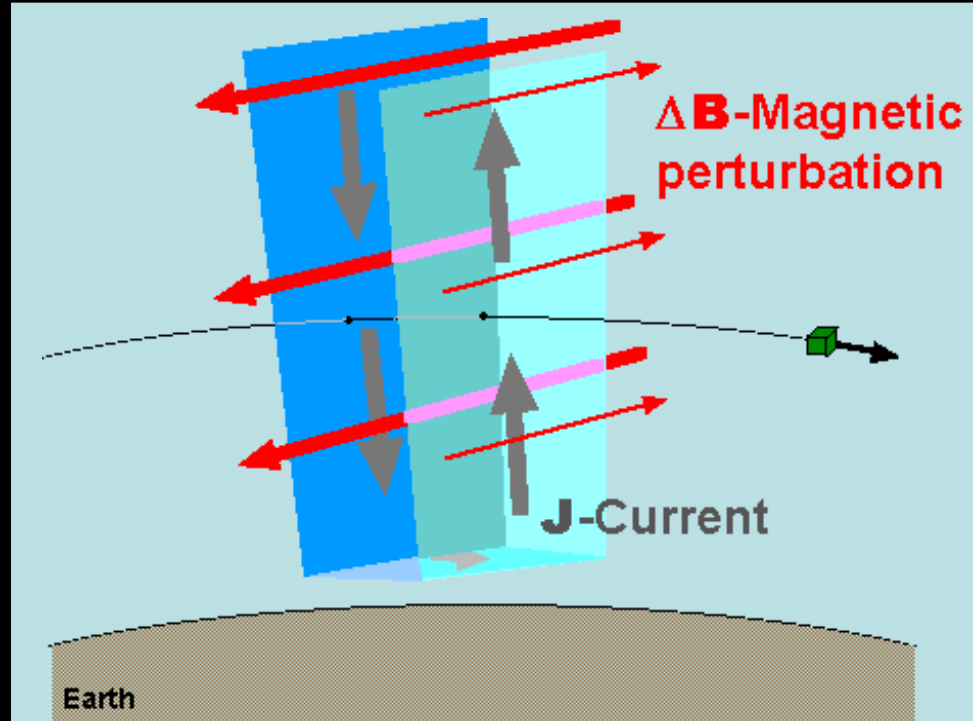


**Active
Magnetosphere and
Planetary
Electrodynamics
Response
Experiment
Development Status**

B J Anderson, H Korth, R J Barnes, and V G Merkin
The Johns Hopkins University Applied Physics Laboratory

Overview of AMPERE as it completes development (31 May 2013)

- Satellite system, sensors, data acquisition, and transmission architecture
- Data, data processing, and products
- Performance, coverage, and initial results
- Future: Continuation and NEXT

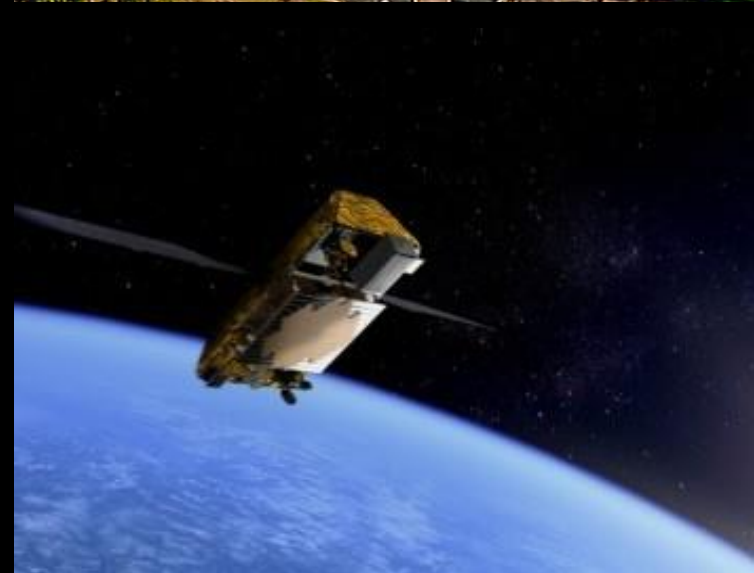


- LEO satellites pass through the Birkeland currents.
- Magnetic perturbations are present primarily between sheets of current.
- Ionospheric currents shield signatures from below.

- **Magnetometer on every satellite**
 - Part of avionics
 - **30 nT resolution: S/N ~ 10**
- **>70 satellites, 6 orbit planes, ~11 satellites/plane**
- Six orbit planes provide 12 cuts in local time
- 9 minute spacing: re-sampling cadence
- **780 km altitude, circular, polar orbits**
- Polar orbits guarantee coverage of auroral zone
- Global currents never expand equatorward of system



- New company founded in 2000
- Assumed assets of original Iridium
- Profitable since 2001
- Majority of revenue non DoD
- Estimated satellite constellation life: 2015+
- Iridium NEXT funded and going forward: launches 2015-2017
- AMPERE continuation is under negotiation for NEXT. NSF proposal in preparation.



Magnetosphere

Ionosphere

Flow

$$\mathbf{E} = -\mathbf{u} \times \mathbf{B}$$

Field lines
convey potential

$$\mathbf{E}_c = -\mathbf{u}_c \times \mathbf{B}_i$$

Momentum

$$\rho \frac{d\mathbf{u}}{dt} = -\nabla P + \mathbf{J} \times \mathbf{B}$$

$$\mathbf{J}_{\perp,m} = \frac{\mathbf{B} \times \nabla P}{B^2} + \rho \frac{\mathbf{B}}{B^2} \times \frac{d\mathbf{u}_{\perp}}{dt}$$

$$J_{||} \propto \int \nabla_{\perp} \cdot \mathbf{J}_{\perp,m} ds$$

Currents
convey stress

$$J_{||} = \nabla \cdot \mathbf{J}_{\perp,i} = \nabla \cdot (\underline{\Sigma} \cdot \mathbf{E}_c)$$

Energy dynamo

$$\mathbf{E} \cdot \mathbf{J} < 0$$

EM Energy Flux

$$\mathbf{E}_c \cdot \mathbf{J}_{\perp,i} > 0$$

$$S_z = \frac{1}{\mu_0} \mathbf{E}_c \times \delta \mathbf{B}$$

Convection

Finite conductance - current

$$\mathbf{J}_{\perp,i} = \underline{\Sigma} \cdot \mathbf{E}_c = \Sigma_P \mathbf{E}_c + \Sigma_H \mathbf{b} \times \mathbf{E}_c$$

Dissipation - drag

The Ionospheric electrodynamics view

Convection

$$\mathbf{E}_c = -\mathbf{V}_c \times \mathbf{B} \quad \mathbf{E}_c = -\nabla \varphi$$

Horizontal currents

$$\mathbf{J}_{\perp,i} = \underline{\underline{\Sigma}} \cdot \mathbf{E}_c = \Sigma_P \mathbf{E}_c + \Sigma_H \mathbf{b} \times \mathbf{E}_c$$

ψ = equivalent current potential

Birkeland currents

$$J_{\parallel} = \nabla \cdot \mathbf{J}_{\perp,i} = \nabla \cdot (\underline{\underline{\Sigma}} \cdot \mathbf{E}_c)$$

Electrodynamics equations: 2 eqs, 5 unknowns

$$\nabla^2 \psi = \Sigma_H \nabla^2 \varphi + \nabla \Sigma_H \cdot \nabla \varphi + \hat{\mathbf{r}} \cdot (\nabla \Sigma_P \times \nabla \varphi)$$

$$J_{\parallel} = -\Sigma_P \nabla^2 \varphi - \nabla \Sigma_P \cdot \nabla \varphi + \hat{\mathbf{r}} \cdot (\nabla \Sigma_H \times \nabla \varphi)$$

E-M Energy Flux

No $\delta\mathbf{B}$, no S_z

$|\delta\mathbf{B}|$ locates regions of S_z

$$S_z = \frac{1}{\mu_0} \mathbf{E}_c \times \delta\mathbf{B}$$

Useful for assimilation

Global and 'uniformly' distributed

Fundamental physical quantity: $\delta\mathbf{B}$ or j_{\parallel}

Relevant to multiple efforts

Ongoing: AMIE, GAIM

Potential: RCM, MHD

Side-by-side comparison of data acquired in 10 minutes

Standard AMPERE: complete coverage with $\sim 1^\circ$ lat. res.

High rate AMPERE: $\sim 0.1^\circ$ lat. res.

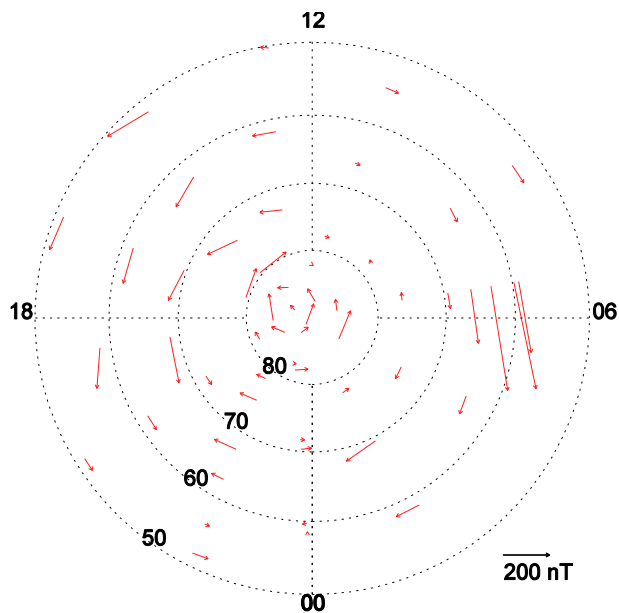
Old: ~ 200 s/sample

19.4 s/sample

2.16 s/sample

Old Data

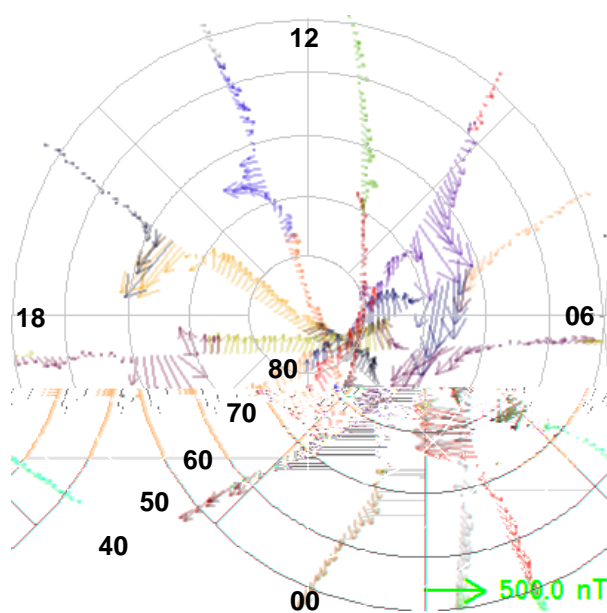
10/01/2002 11:55-12:05



TLM data from all satellites

AMPERE: Standard

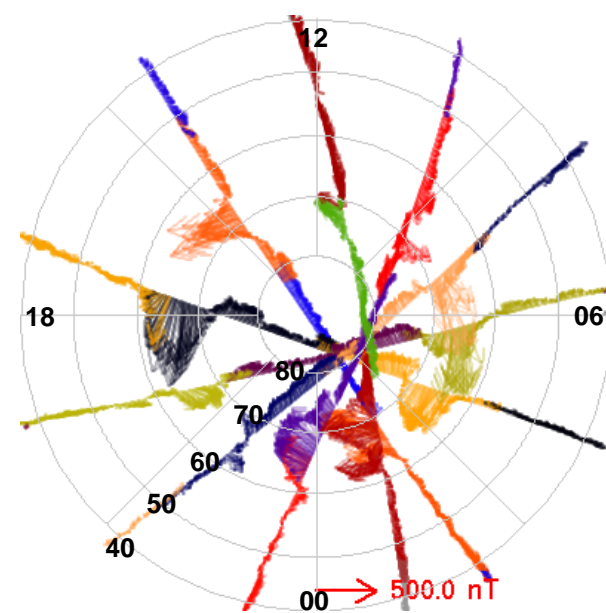
10/08/2012 21:24-21:34



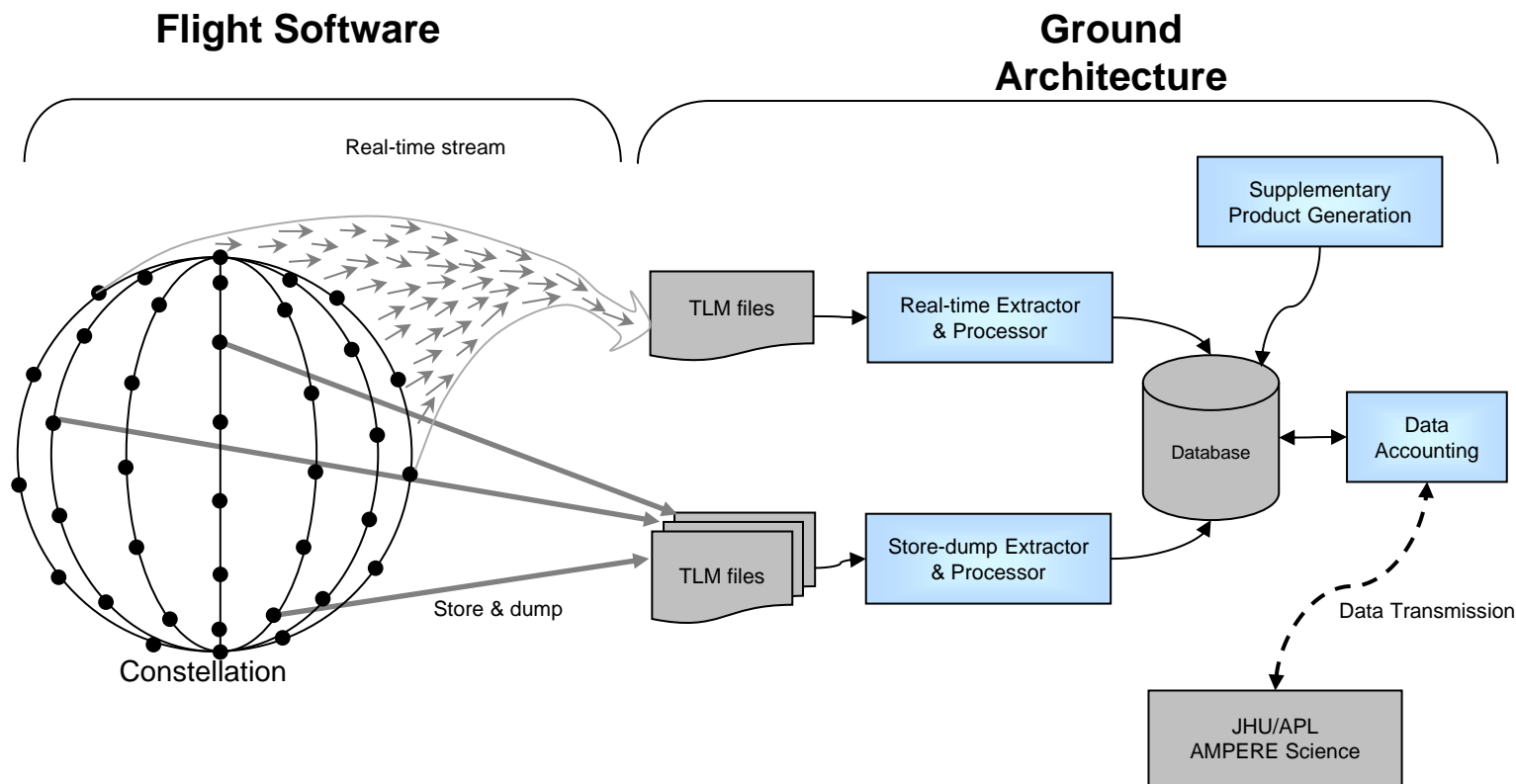
Different colors denote different satellites

AMPERE: High

09/30/2012 20:42-20:52

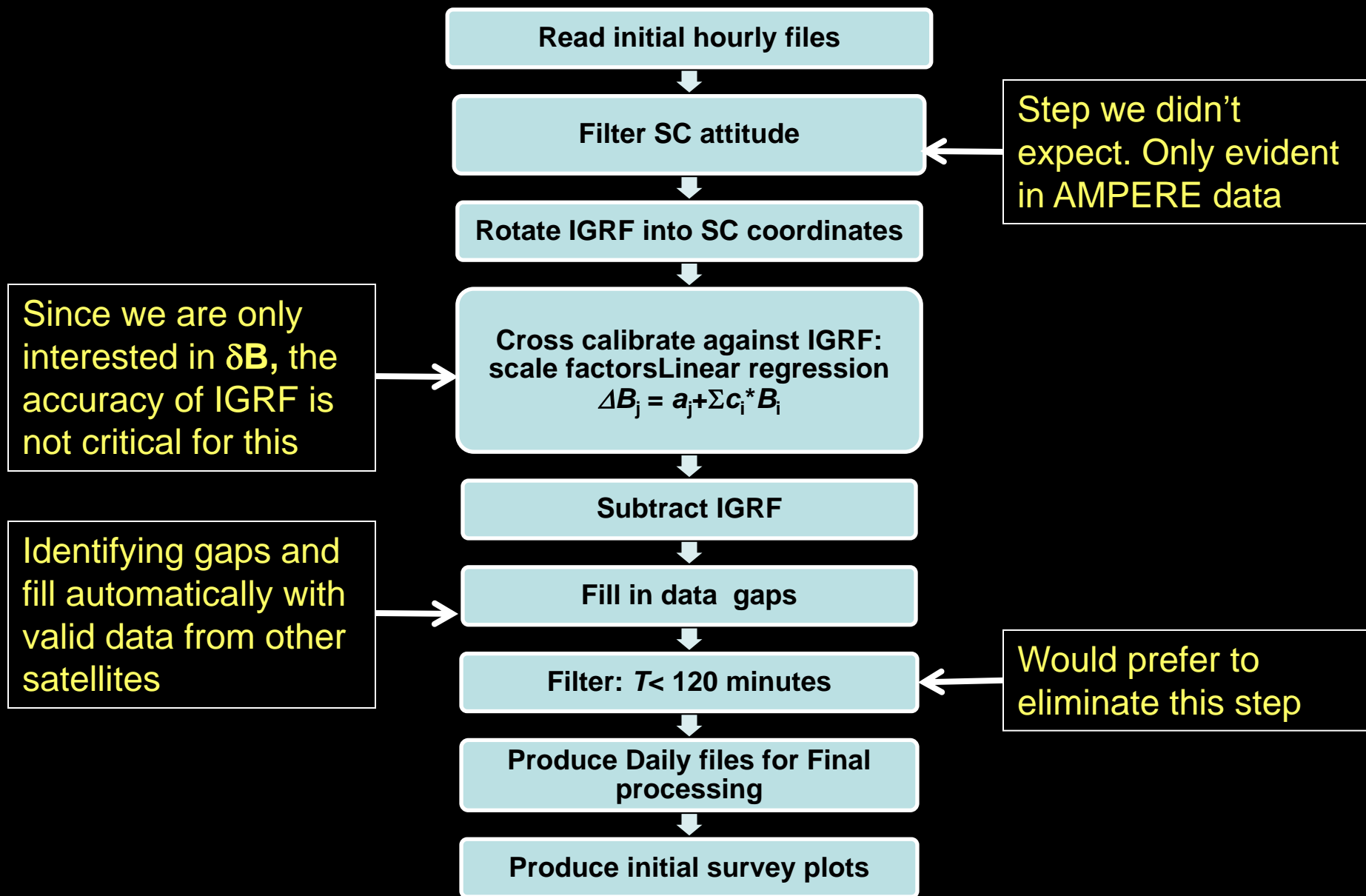


- Flight software acquires magnetometer samples at 20-s or 2-s intervals on every satellite 24/7
- Transmits to ground over satellite network
- Store & dump data: fills in gaps, definitive orbit/attitude
- Definitive data: data accounting & post-facto ephemeris & attitude



- Space segment
 - Space software development, test, upload and commissioning completed 31 May 2010
 - AMPERE acquisition fully functional 10 June 2010
- Ground data system
 - Data ingestion and accounting completed (Boeing)
 - Transition to new hardware gradual (Boeing)
 - Data transfer to Science Data Center (secure ftp, 24/7)

- Data pre-processing
 - Archive, merge, attitude analysis
 - Inter-comparison/calibration, model field comparison
 - Conditioning: residuals, quantify ‘noise’, weighting
- Inversions: fit to $\delta\mathbf{B}$; derivation of \mathbf{J}_r
 - Data ingestion and quality/completeness checks
 - Orthogonal function fits to $\delta\mathbf{B}$. \mathbf{J}_r via Ampere’s law.
 - Compiled code: run-time for AMPERE high 10-minute segment: ~30 seconds per hemisphere
- Data access system
 - Summary products: 10 min windows every 2 min
 - Browser and custom display tool
 - Processing product download (input $\delta\mathbf{B}$ digital)

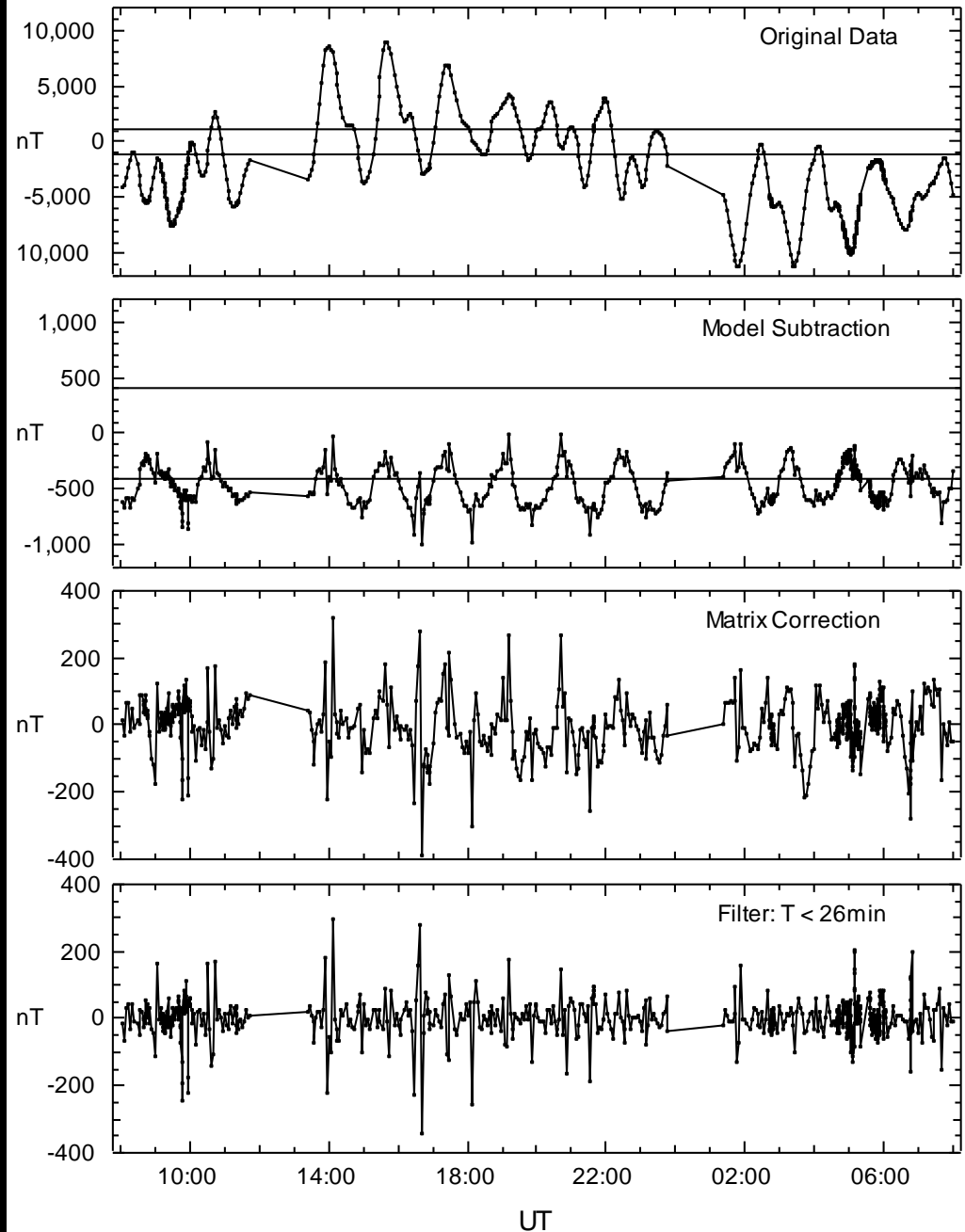


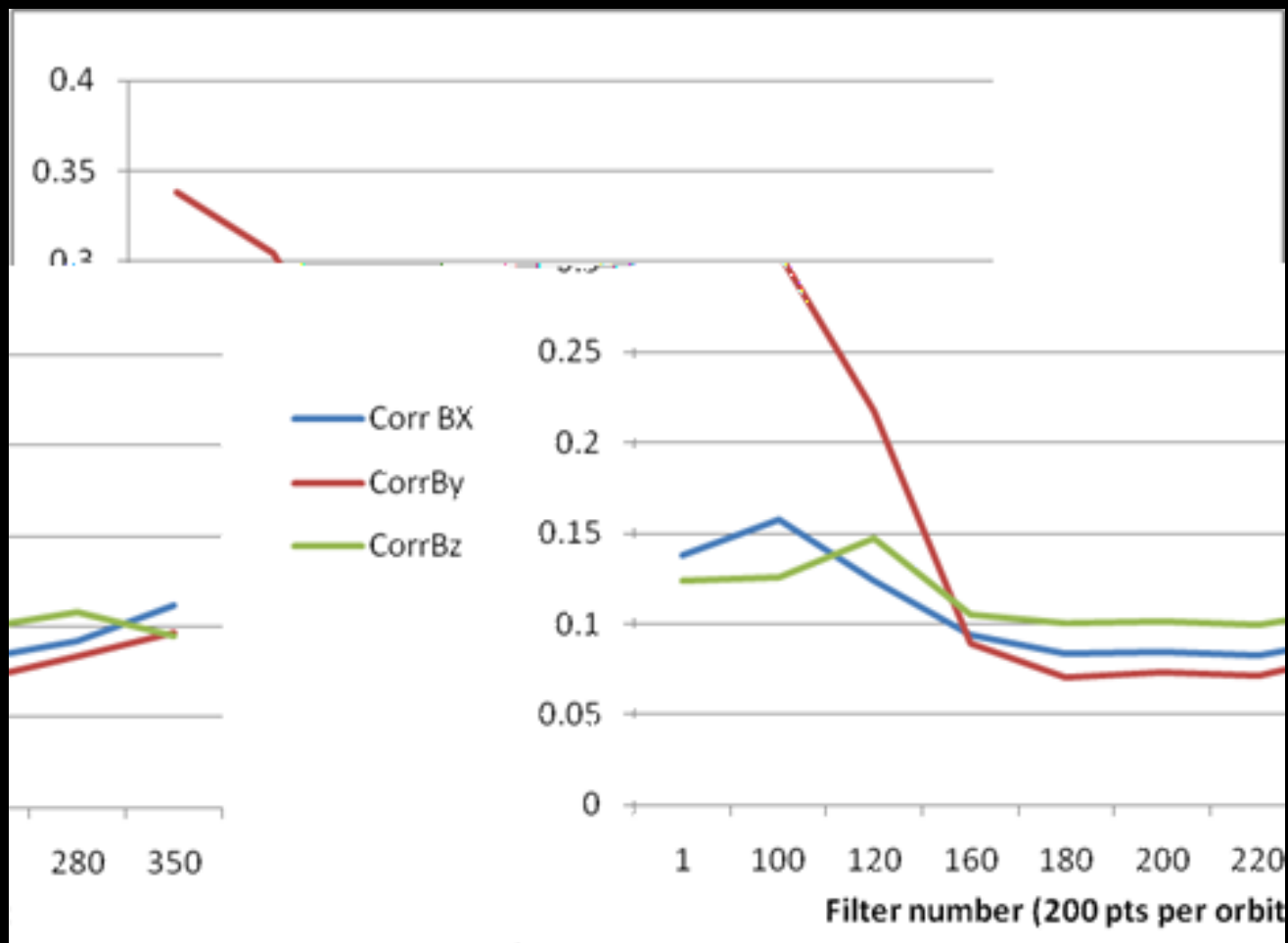
Raw data: B_{meas}

*Initial main field residuals
dB errors ~ 1%*

*Gain & mag orientation
corrections:
 dB_{cor} errors ~ 0.4%*

*Attitude corrections:
 dB_{cor} errors ~ 0.05%
Comparable to 30 nT
(12-bit) resolution.*





- Attitude data conditioning filter determined by reducing correlation between attitude and magnetic residuals.

First light: 17 Feb 2009 (brief)

Partial constellation tests selected days/periods: Mar – Sep 2009

Operational testing:

1 Oct 2009 – 31 May 2010

Temporal coverage: >90%

Sporadic time gaps in data from individual SVs

Occasional high rate test data

Activity / Development Task	Dates
Third flight test and first high rate test	14 - 21 Apr 2009
Fourth flight test	19 May 2009
First full constellation data test	23 Jun - 8 Jul 2009
Second full constellation test, first high rate tests	29 Sep - 30 Nov 2009
Formal AMPERE space systems operations test	1 Dec 2009 - 31 May 2010
AMPERE data collection	1 Jun 2010 - present

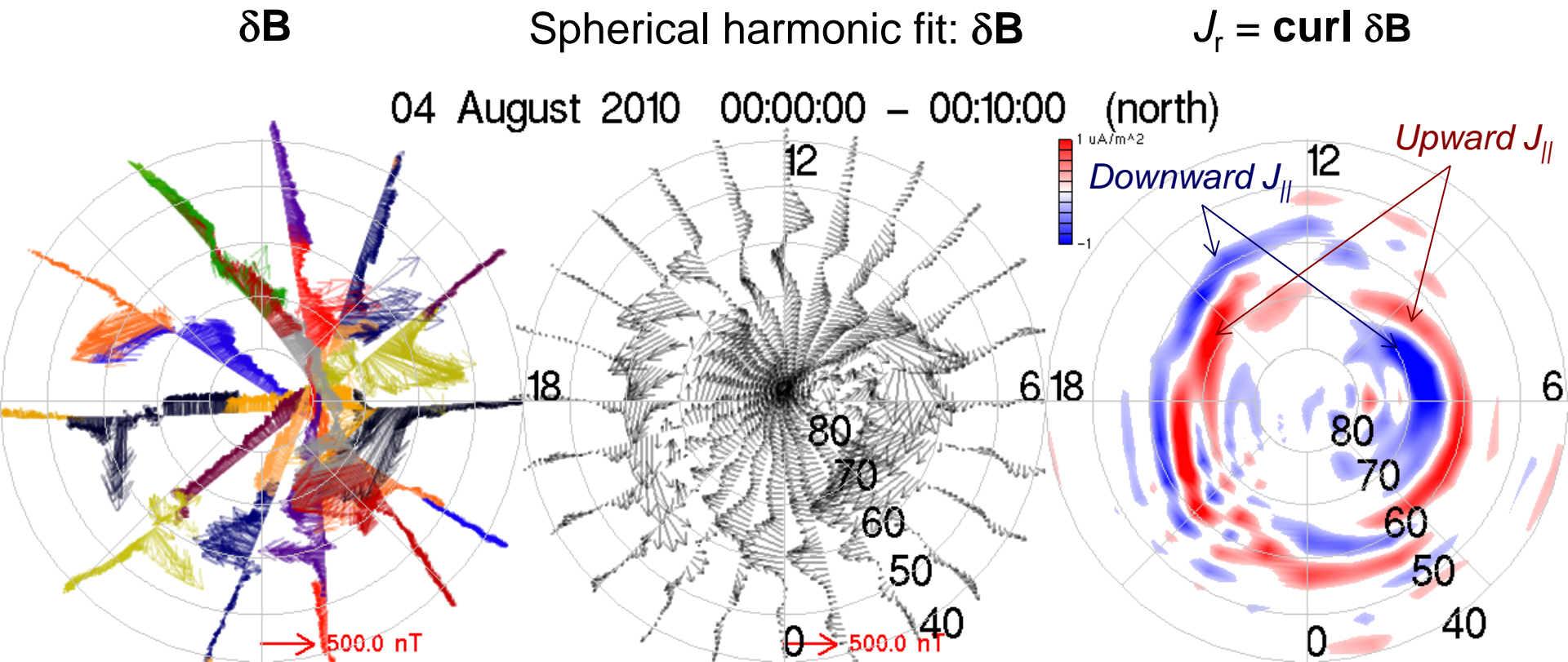
- Test Data: Oct 2009 – May 2010
 - Gaps in coverage from constellation (rare)
 - Gaps in individual satellites (fairly frequent)
 - Very few days entirely missing
- AMPERE operations:
 - June 2010 – May 2013
 - >99% data coverage
 - Very few missing inversions
- High rate data:
 - 512 hours per year of high rate data
 - CME-driven storms and campaigns

Short-term: PI makes a decision based on CME-predicted storms (GSFC bulletins)

Scheduled: to support campaigns (THEMIS, sounding rocket, ...)

2010		2011		2012		2013	
0120	0122	0111	0125	0121	0123	0117	0118
0224	0226	0216	0218	0126		0316	0318
0324	0325	0309	0311	0214	0223	0410	0411
0415	0429	0406	0408	0617	0618	0413	0414
0523	0524	0515	0630	0714	0716		
0527	0529	0711	0712	0902	0904		
0803	0805	0804	0807	0929	1002		
1022	1025	0909	0910	1112	1114		
1113	1115	0917	0918	1124	1125		
1207	1212	0926	0927				
1228	1230	1129	1130				
		1228	1230				

- Vector $\delta\mathbf{B}$, data, continuous $\delta\mathbf{B}$ map via SH fit
- J_r from Ampere's law applied to horizontal $\delta\mathbf{B}$
- Time cadence: 9 min set by inter-spacecraft separation
- Lat res: 1.15° for 19.44s sampling, 0.13° for 2.16s sampling



- Data Preparation:
 - For each 10 minute segment N and S separately
 - Sort by track and by slot within each track.
 - Convert to AACGM, positions and vector data (two options since AACGM is not an orthonormal system).
 - Track overlap conditioning.
 - Nyquist condition checks and regularization.
- Basis Set Computation:
 - Must be orthonormal set: required for curl computation (fitting data using a re-defined polar angle in standard Y_l^m is not sufficient).
 - Given latitude range, latitude order and longitude order: compute cap inversion basis functions.
 - Non-integral Legendre functions derived from series of hypergeometric functions).
- Design Matrix Inversion
 - Compute design matrix convolution of cap functions and measurement locations.
 - Matrix inversion.
 - Gridded output: $\delta\mathbf{B}$, j_r .

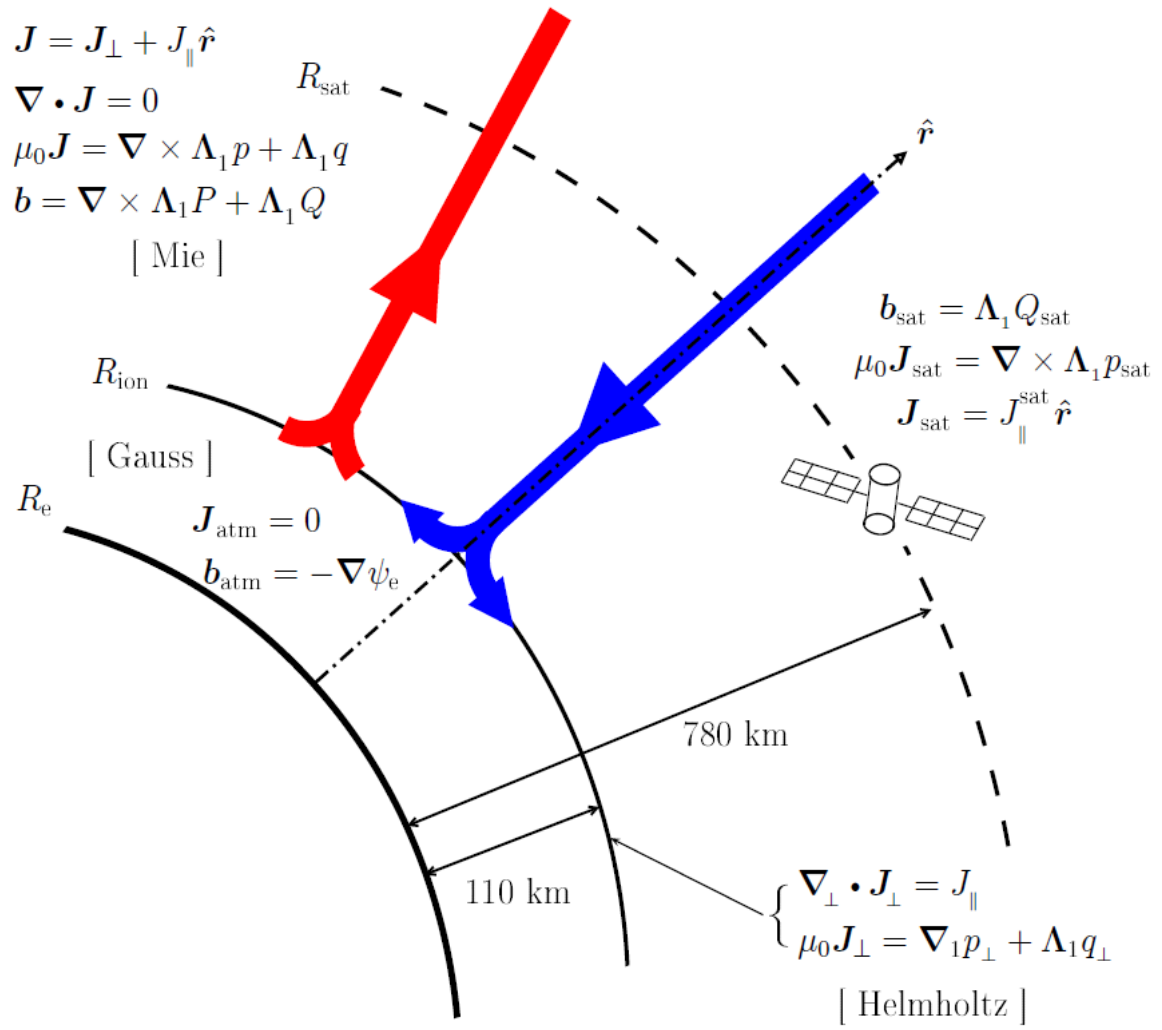


Fig. 1 Magnetic fields and currents and relevant mathematics below, in and above the ionosphere. The surface curl operator $\Lambda_1 = \mathbf{r} \times \nabla$ (Green 2006).

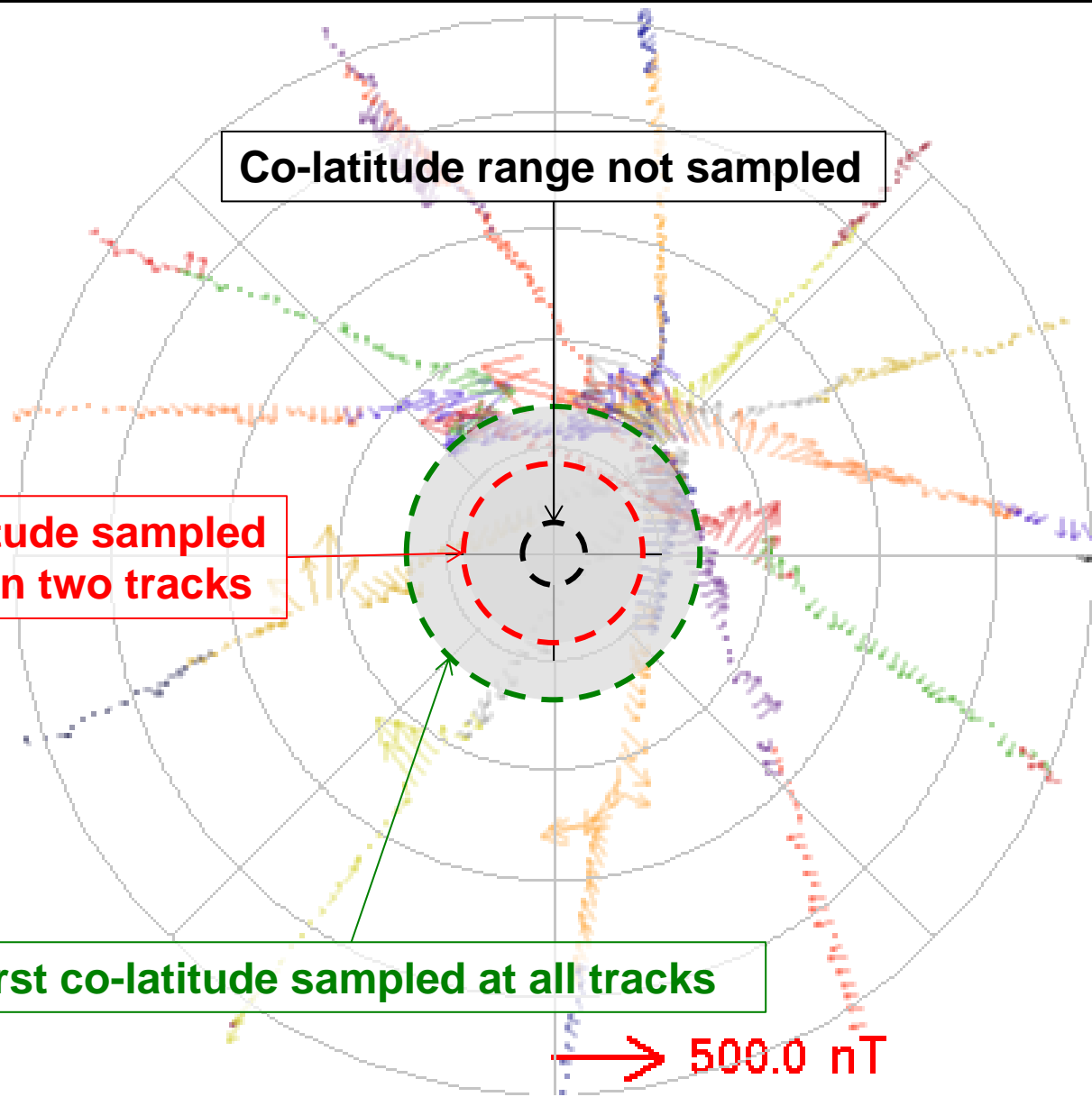
- **Coordinate system matters: pole origin**
- **Nyquist condition: requires interpolation over areas w/o data. Pick the lesser evil (gaps are fatal to inversion).**
- **Satellite track overlaps: requires special treatment.**
- **Consequences of one missing or bad slot: requires filling in from satellite ahead. Again, choose the lesser evil.**

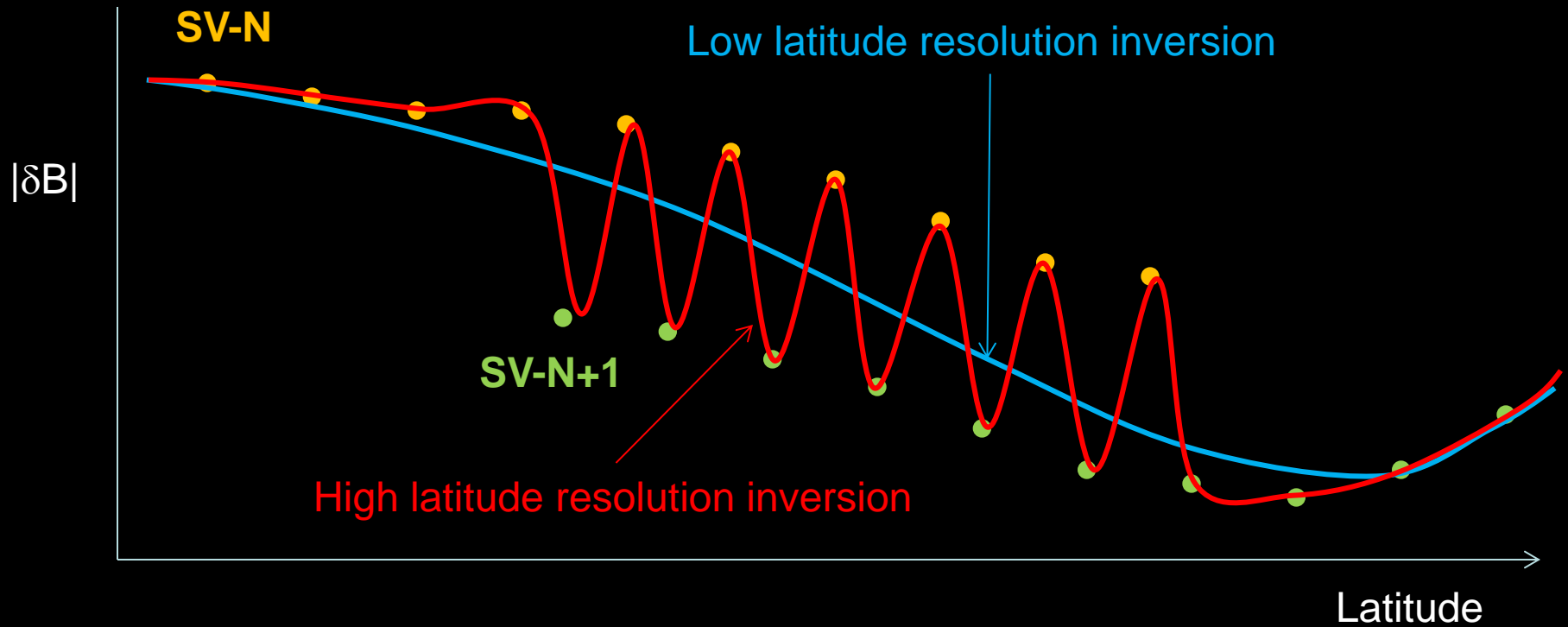
Co-latitude range not sampled

First co-latitude sampled by more than two tracks

First co-latitude sampled at all tracks

→ 500.0 nT



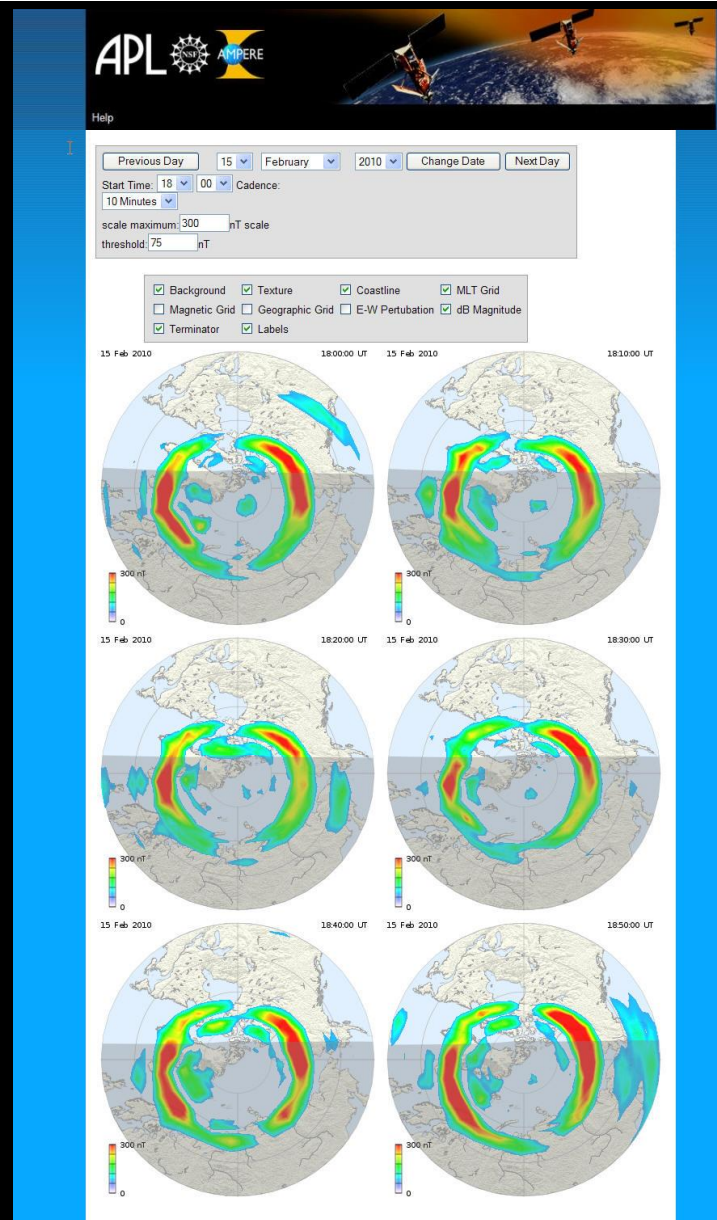


- Baselines between SVs are generally somewhat different.
- Causes moderate phantom signals in low latitude resolution fits.
- Overlap in track segments causes severe corruption in high latitude resolution fits.

- Somewhat self-checking via consistency between $\delta\mathbf{B}$ signatures on multiple satellites.
- DMSP MAG comparisons: Iridium under-samples the smaller-scale, higher time resolution, but the large-scale $\delta\mathbf{B}$ s agree.
- Inversions: E-field
 - SuperDARN flows: agree in location and directions – but not in magnitude – topic for work on conductance.
 - DMSP drift: located correctly but under-estimate magnitudes (low latitude resolution of inversions).

- All products re-run since February 2013 with latest pre-processing and inversion codes.
- Inventory tools and graphics displays.
- Gridded output
 - 1 hr x 1 deg (MLAT) in AACGM
 - $\delta\mathbf{B}$ fit, J_r
- Digital data (in review)
 - Detrended $\delta\mathbf{B}$ in geographic
 - Netcdf files
- Data browser
 - Overlay displays
 - Graphics
- Summary statistics (just implemented)
 - Birkeland current analogs of AE etc.
 - Daily and monthly

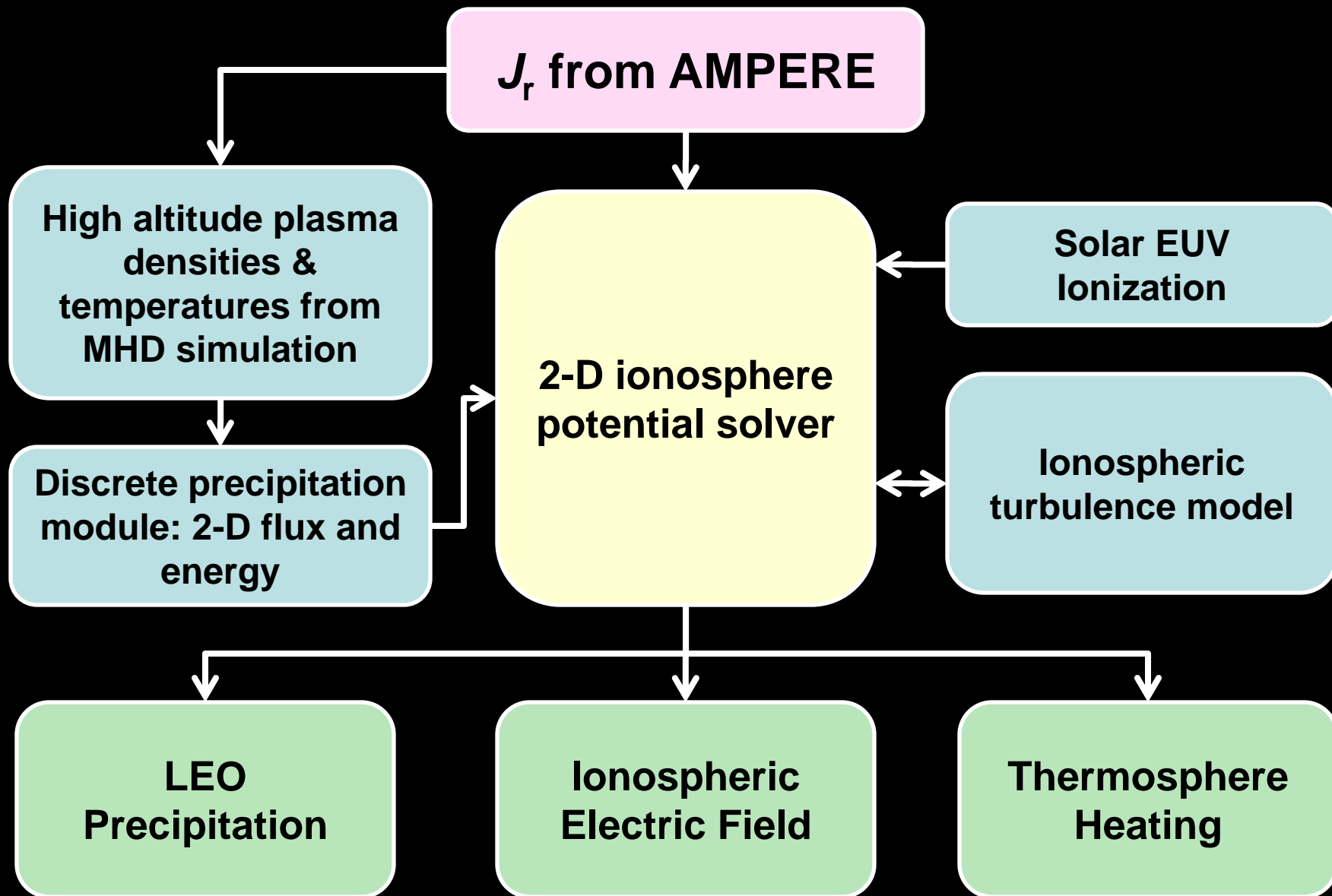
- AMPERE Science Data Center data center browser
- Accesses auto-processed data: As soon as we process data it shows up for the browser.
- Products available for display:
 - Input horizontal $\delta\mathbf{B}$ vectors
 - Fit $\delta\mathbf{B}$
 - $|\delta\mathbf{B}|$ magnitude
 - $\delta\mathbf{B}$ E-W component
 - Radial current density: \mathbf{J}_r



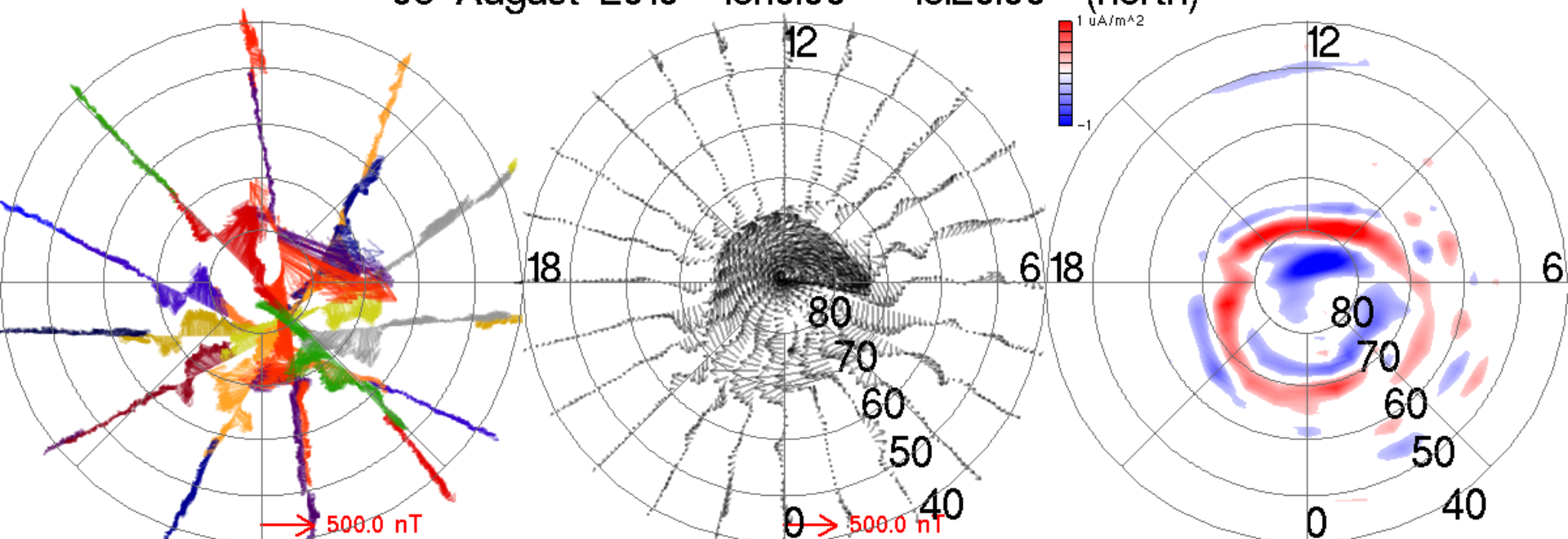


- Almost exclusively outside the AMPERE team.
- Thermospheric response (Wilder et al., 2011, 2013)
- Polar cap dynamics (Claussen et al., 2012, 2013; Merkin et al., 2013; ...)
- Ionospheric electrodynamics (Marsal et al., 2012; Lu et al., this meeting; Knipp et al., this meeting)
- *Substorm dynamics: numerous (Murphy et al., 2013; and others)
- NASA mission and NSF & NASA grant proposals: numerous ...

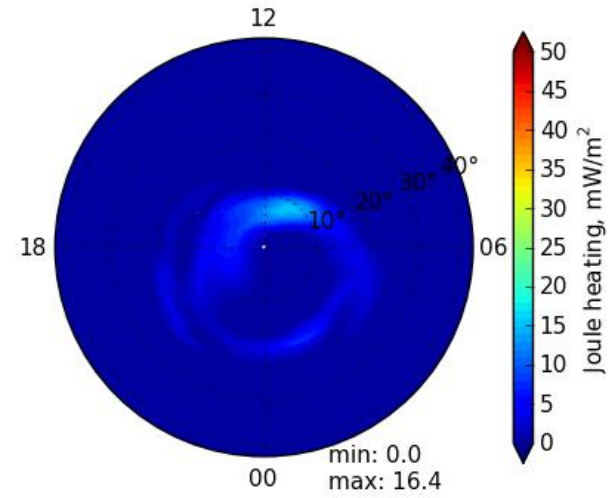
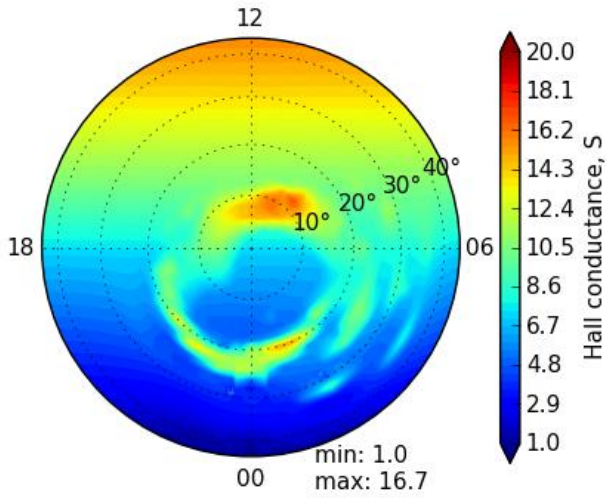
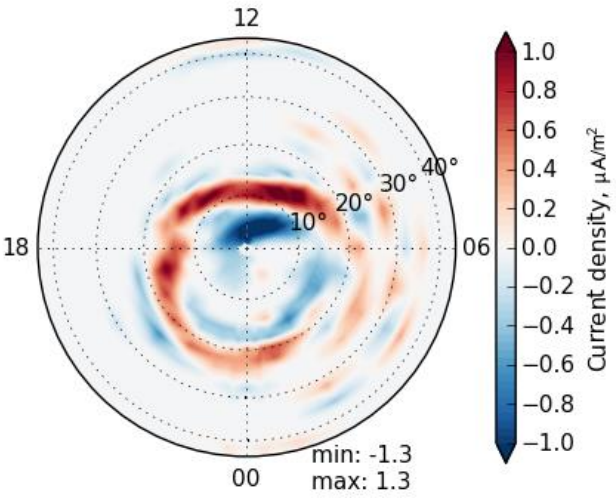
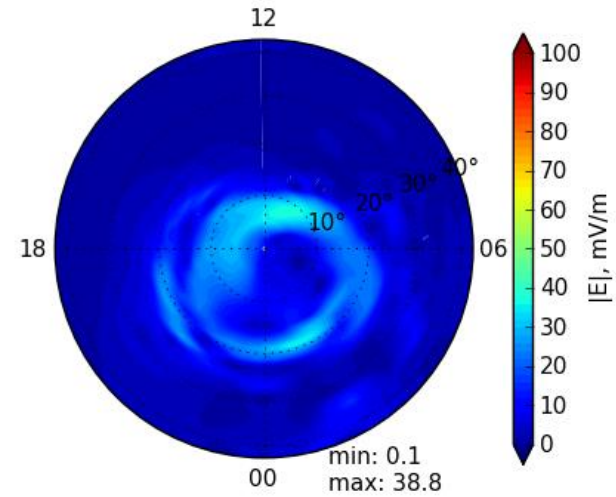
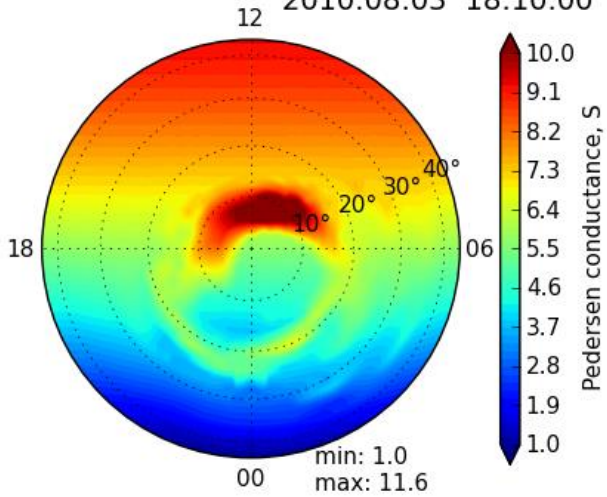
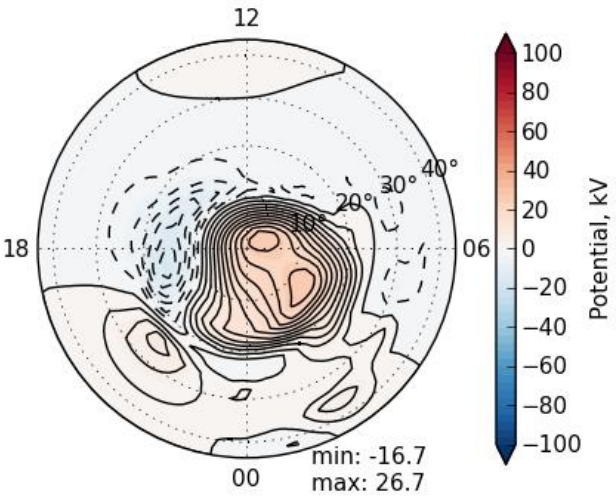
* If AMPERE had been proposed as a sub-storm project – would you have believed it?

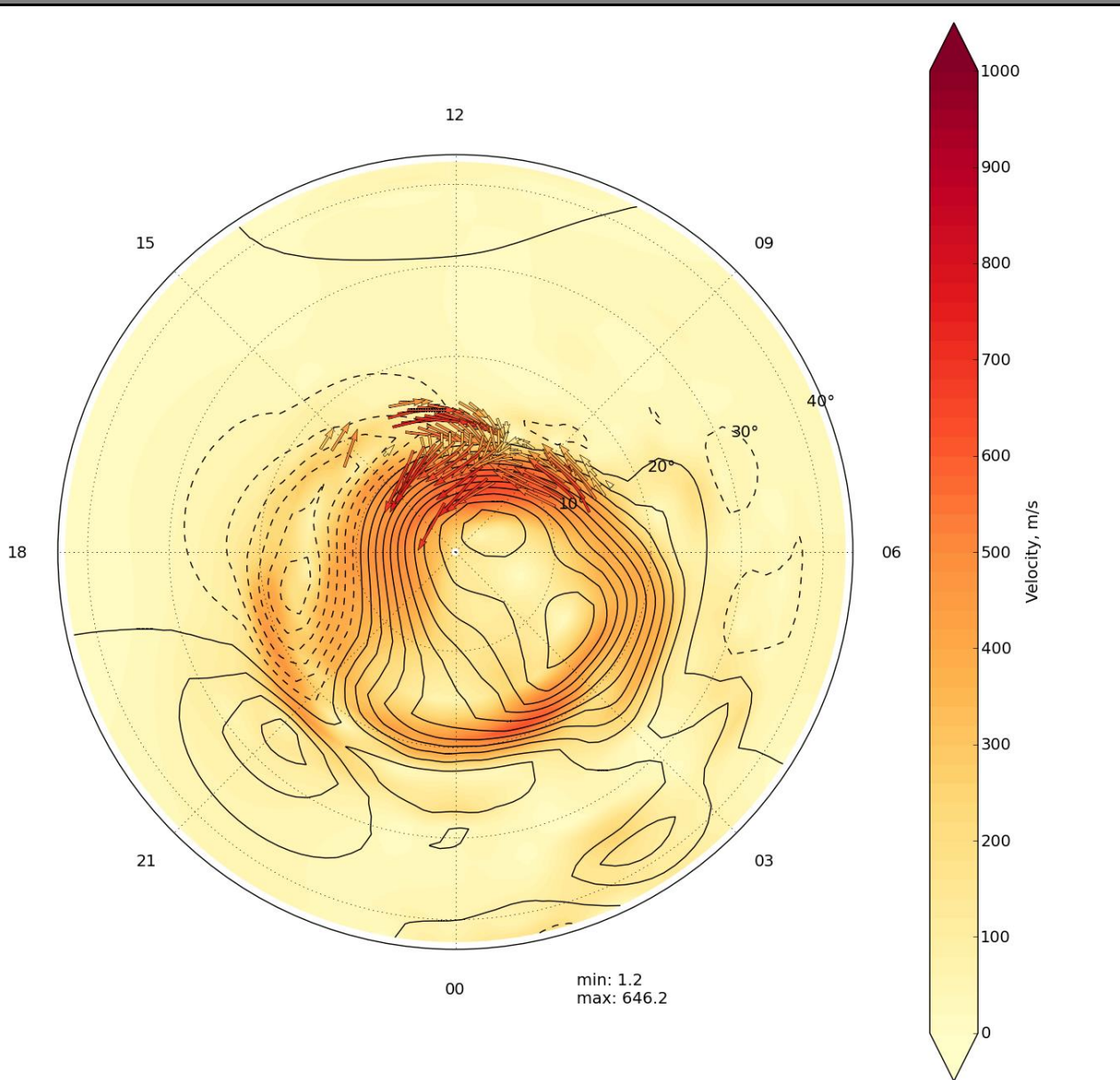


03 August 2010 18:10:00 – 18:20:00 (north)

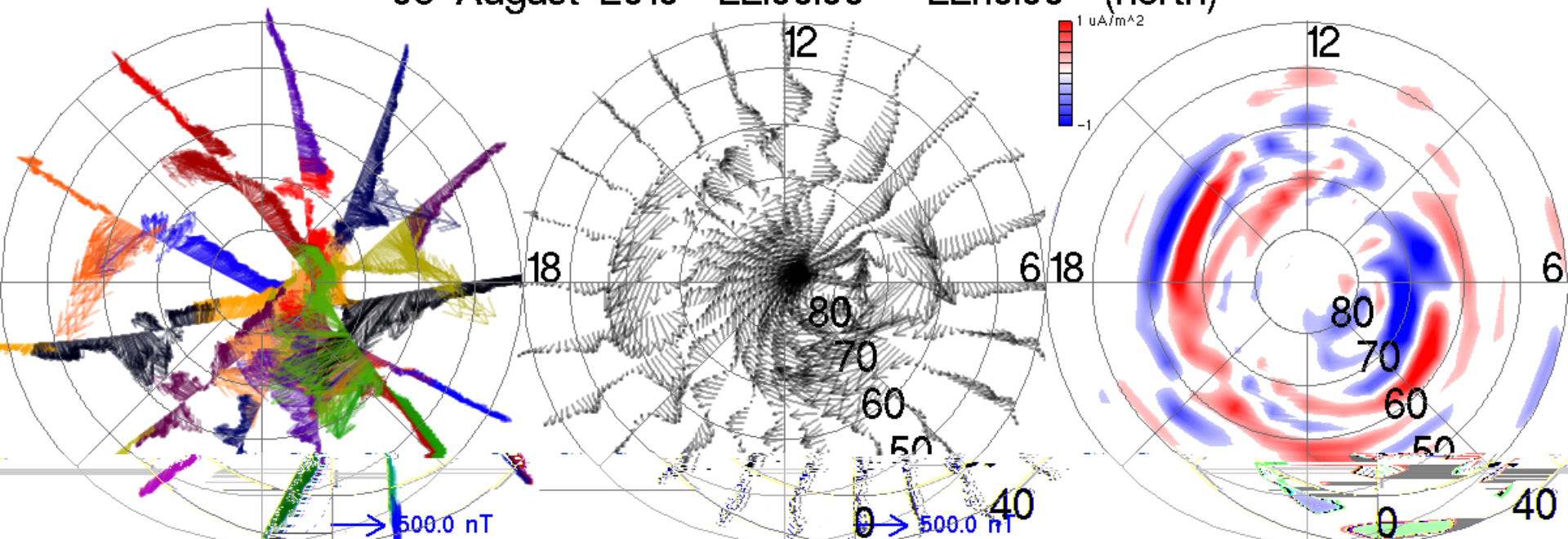


MIX (north)
2010:08:03 18:10:00

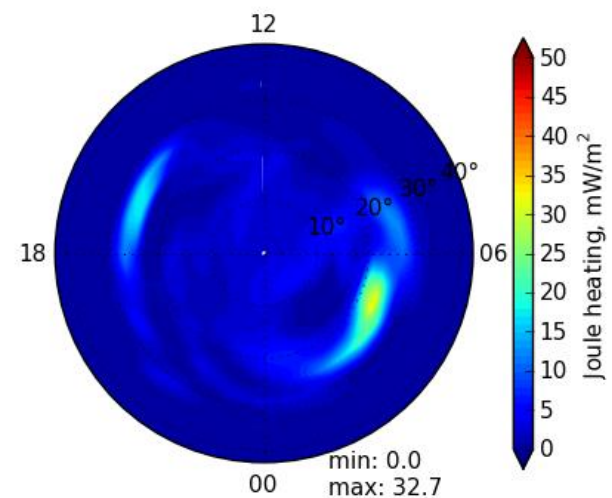
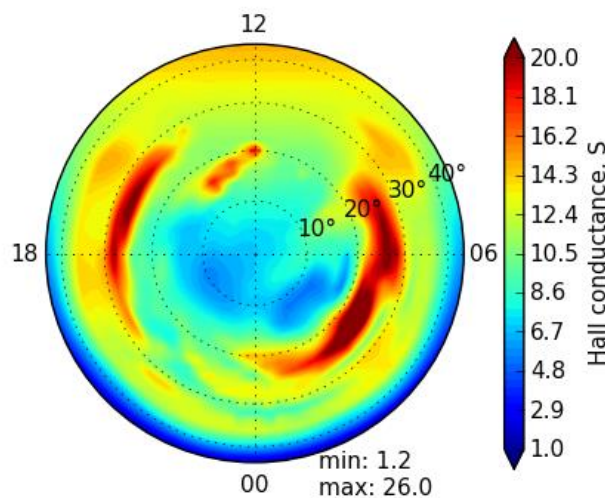
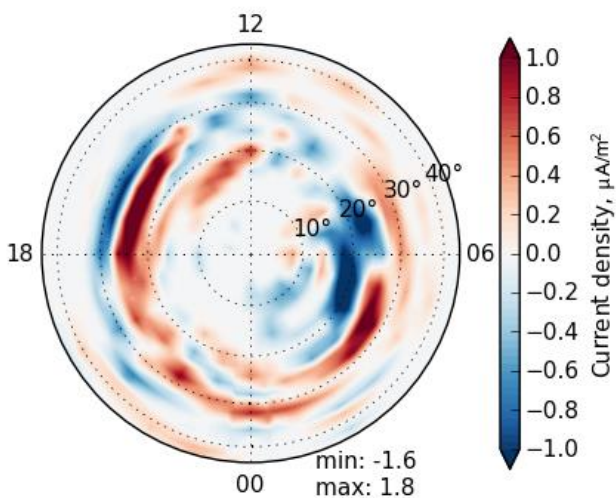
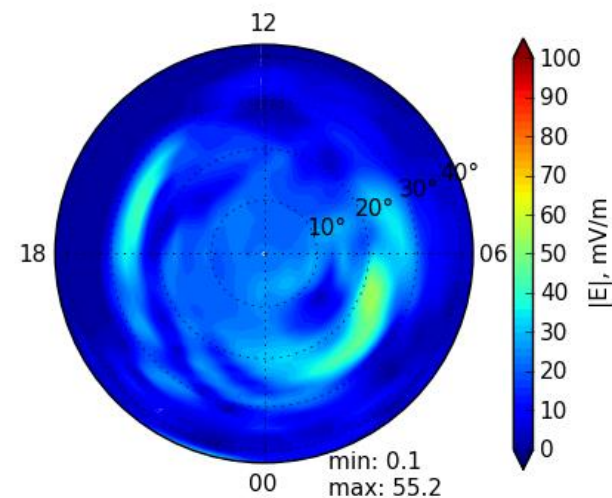
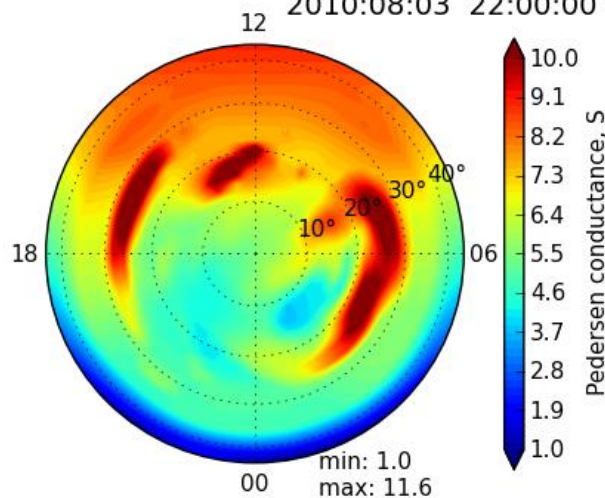
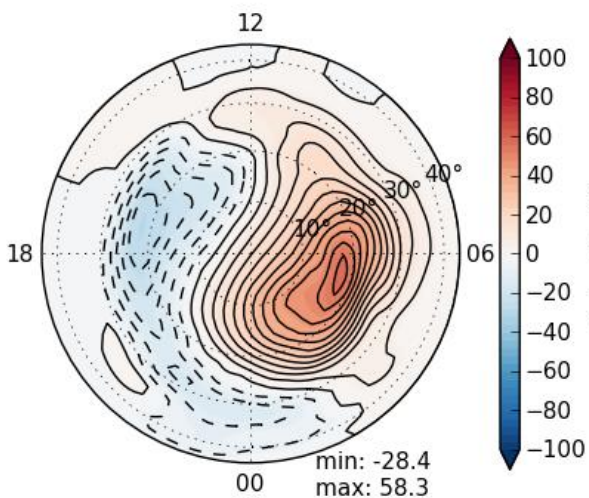




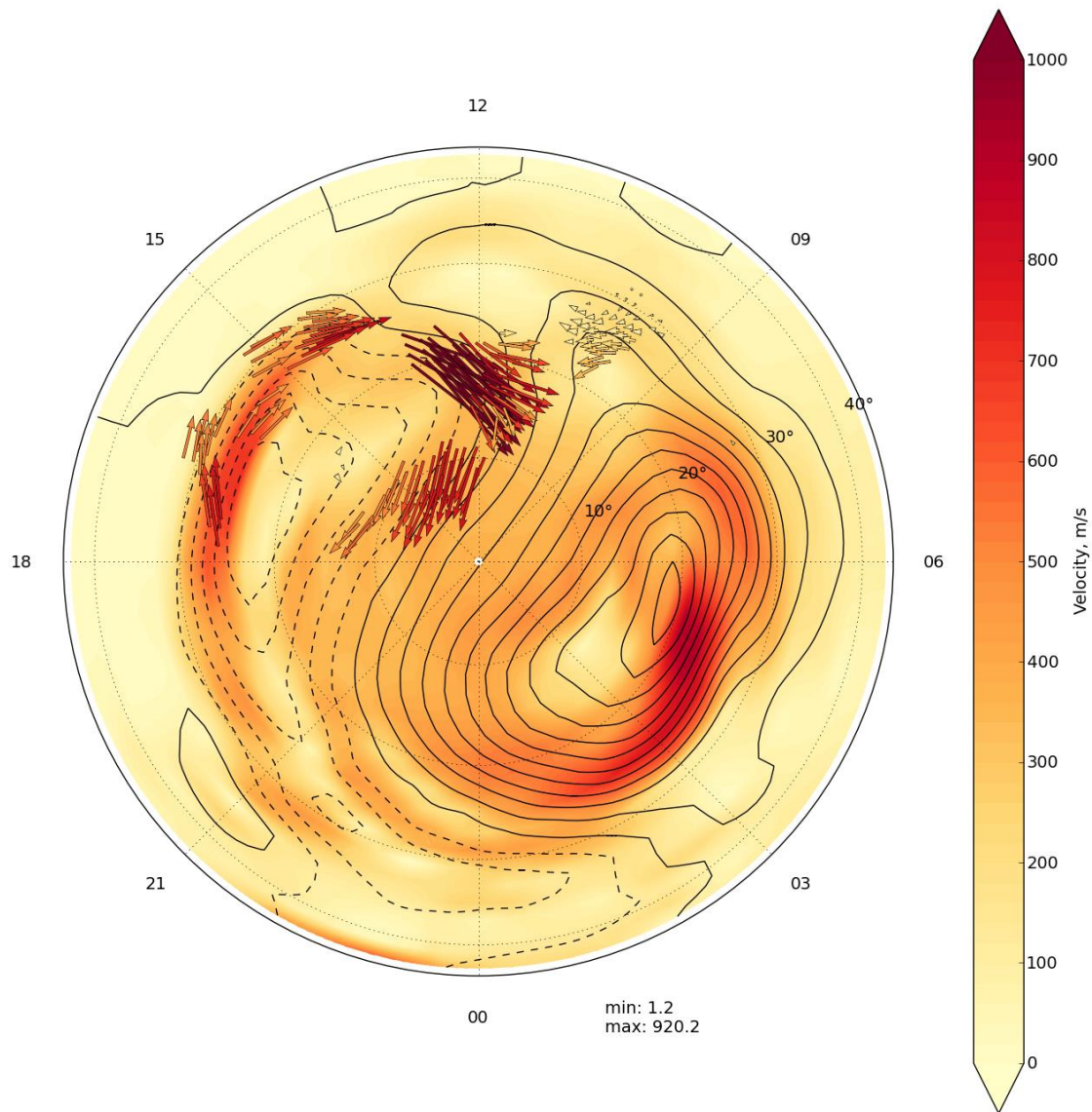
03 August 2010 22:00:00 – 22:10:00 (north)



MIX (north)
2010:08:03 22:00:00



2010:08:03 22:00:00



- Raw data transfer to APL within 100 s from transmission of data from satellite.
- Real-time processing
 - AMPERE high test April 13-14, 2013
 - Median 6 minute total latency to J_r . (End of data interval to 'now'.)
- Limiting step is data packet time span:
 - Standard: 19.44s \rightarrow packet takes 24 minutes to fill:
latency = 24 min + 6 min
 - High rate: 2.16s \rightarrow packet takes 160 sec to fill:
latency = 160 sec + 6 min

- Even best-effort real-time is labor intensive.
 - Contingency preparedness & testing.
 - Performance monitoring.
 - User service.
- Operational real-time is expensive.
 - Hot backups. Operational code.
 - Flow-down of real-time requirements on data purchase (assured reliability).
- Dubious trade: loss of science value.
 - Science analysis is retrospective & needs best data.
 - Detracted AMPERE labor from maximizing science value of data and products.

- AMPERE-II concept:
 - AMPERE-Continuation: on Iridium Block-1
 - AMPERE-NEXT: on Iridium Block-2
- AMPERE-NEXT:
 - Iridium-NEXT satellites do have magnetometers.
 - AMPERE on NEXT will be different but superior.
 - Same orbital configuration: 6 orbit planes with 11 SVs equally spaced in each plane.
 - Time sampling will be fixed but return more than twice as much data as the present AMPERE standard rate: $<0.5^\circ$ latitude resolution 24/7.
 - Attitude knowledge: more than 10x greater precision than present system. Higher quality δB data, more stable baselines.

- Add community products: e.g. Claussen R1/2 fit, etc.
- Analyze stepwise noise
 - Identify operational causes. Corrections?
 - Reduce 'noise': ~2x reduction in δJ_r to ~0.07 mA/m².
- Higher latitude resolution inversions:
 - Data support down to 1.2° resolution
 - Need faster inversion algorithm
- Ingest other magnetometer data: DMSP, CHAMP?, SWARM?, ...
- Regional inversions
 - Along track of higher time resolution data (DMSP etc.)
 - Orbit crossing region is often in cusp or substorm onset
 - Apply finite-element or other inversion algorithms
- Multi-data type inversions: E-field, ground mag, auroral imagery
- Community
 - User working meetings virtual (webinars) and real (SWW, GEM/CEDAR)
 - Student workshops

