



.... Your *reliable* partner



Elcome Technologies Private Limited

Welcomes

Hugh Beertlein, Terrence Lim and

Harshit Shah



.... Your *reliable* partner

ELCOM



Group of Companies





....Your reliable partner

Elcome Group Companies



Elcome Marine Services Pvt. Ltd. (1978)



Indocen Electronic Systems Pvt. Ltd. (1993)



Elcome Technologies Pvt. Ltd. (1998)

....Your reliable partner



ElcoSoft Pvt. Ltd. (2003)



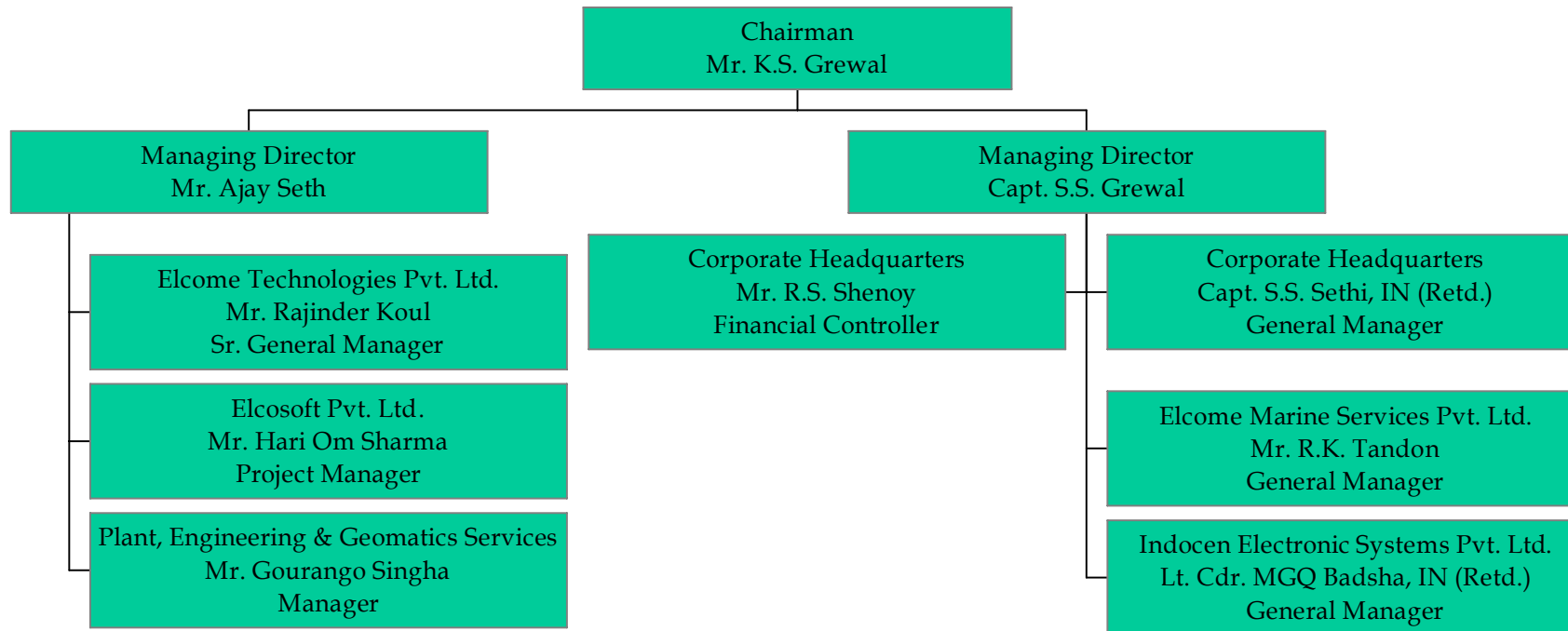
Plant, Engineering and Geomatics Services (2006)





....Your reliable partner

CORPORATE ORGANISATION





....Your *reliable* partner

Introduction

- ❑ Established on 1st July 1998
- ❑ Operations Commenced on 1st August 1998
- ❑ Started With Representing Leica Geosystems in India





.... Your reliable partner

PRINCIPALS

LEICA GEOSYSTEMS A.G,
SWITZERLAND

Optical/Laser Measurement
&
Positioning Technology



AMBERG MEASURING
TECHNIQUES LTD.,
SWITZERLAND

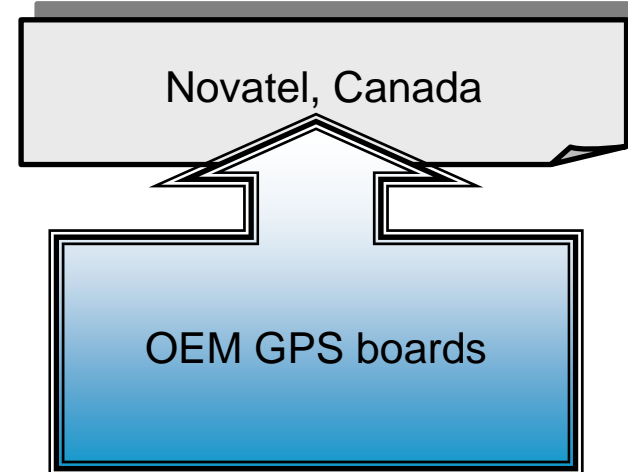
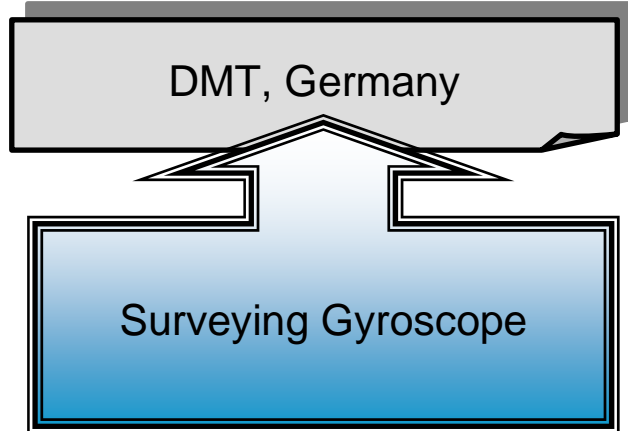
Tunnel Profiler





... Your reliable partner

PRINCIPALS





.... Your reliable partner

PRINCIPALS

Magellan, USA

Handheld GPS



NEWCON OPTIK, Canada

Laser Range finders





.... Your reliable partner

PRINCIPALS

Campbell Scientific, Canada

Weather Station



Riegl Inc. Canada

Long Range Laser Scanners





.... Your reliable partner

PRINCIPALS

Paro Scientific Inc. USA

Pressure Transducers

Digiquartz® Technology Advantages

Model 765 Portable Pressure Standard
0.008% Accuracy 0.0001% Resolution

New

The advertisement features a collage of images. On the left, a Digiquartz pressure transducer is shown with a digital display showing '29.55215 1mPa' and '-0.00037 1mPa/s'. In the center, a field installation of a pressure transducer is shown on a grassy hillside. On the right, a portable pressure standard (Model 765) is shown in its carrying case, with a 'New' sticker. The background is a scenic view of a coastline with waves and a clear sky.



....Your reliable partner

MISSION STATEMENT

Our mission is to be
the India's **first-choice provider** of innovative solutions to
our customers' needs in the market segment we serve
and
**Trustworthy, Loyal and professional partner to our
Principals and customers**



.... Your *reliable* partner

Our Office





.... Your *reliable* partner

Our office





.... Your reliable partner

Conference Room





.... Your reliable partner

Application Area





....Your *reliable* partner

Our Market Segments

- Engineering & construction surveying
- Industrial measurement of large structures
- Cadastral surveying, mapping & land titling
- Mining & exploration surveying
- Utilities, forestry and agriculture GIS applications
- Avionics
- Photogrammetry
- Seismic Studies
- Marine Survey and Meteorology for Weather
- Defense surveying & intelligent observation
- Building & associated trades
- Through Out Indian Subcontinent



....Your reliable partner

Competence

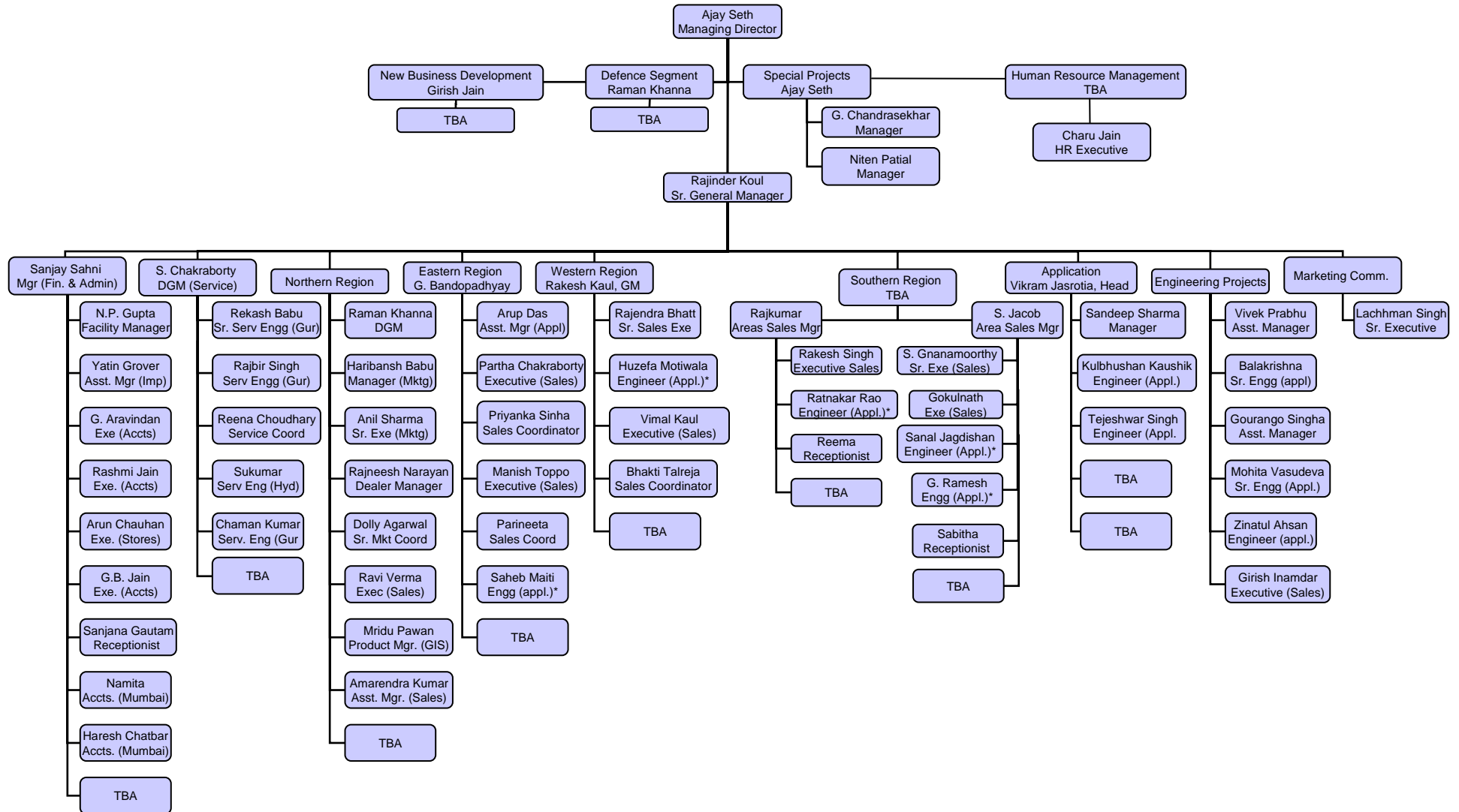


- More Than 200 Man years of Surveying Experience.
- Among the world's best technical know-how on Surveying, GPS (Leica) & IMS products available.
- Capability to assist in Implementation of Projects
- Capability for Man Power Training to Factory Standards
- Repair facility for complete product line.
- Application training and project support for all Leica product line and all targeted market segments
- Understand the need for quick response and can support customers time crucial requirements.



.... Your reliable partner

Organization Chart





.... Your reliable partner

Showroom





.... Your reliable partner

GURGAON SERVICE CENTRE





.... Your reliable partner

Service Workshop





.... Your reliable partner

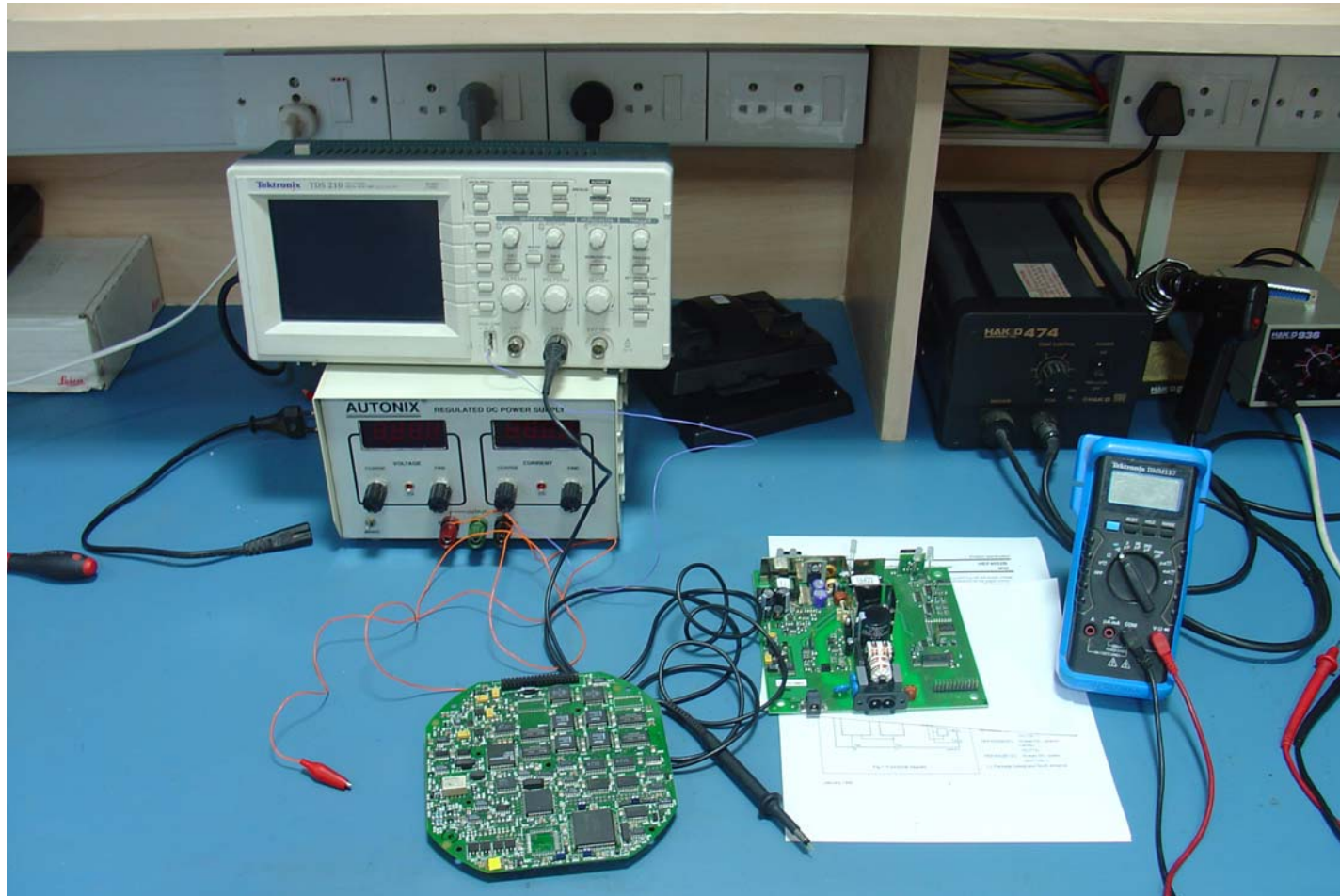
Service Workshop





.... Your reliable partner

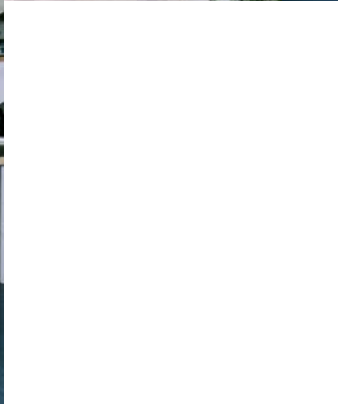
Service Workshop





.... Your reliable partner

STATE-OF-THE ART SERVICE CENTER, HYDERABAD





.... Your reliable partner

SERVICE CENTER CERTIFIED BY LEICA

Authorization

Leica Geosystems AG, Heerbrugg (Switzerland) confirms that the Service Center of

Elcome Technologies Pvt. Ltd. Gurgaon; India

has implemented a Service management system and has successfully demonstrated during an Audit by **Leica Geosystems AG, Heerbrugg (Switzerland)** that this system meets the relevant criteria for a Leica Geosystems Service Center.

Leica Geosystems AG, Heerbrugg qualifies above area to be an

Authorized Service Center of Leica Geosystems AG

Based on this Authorization the Service Center is authorized to maintain and repair products and to issue Service Certificates in accordance with Leica guidelines (Reference: Service News 29/2001; 24.9.2001 /3679-AER) for the range of Leica Surveying & Engineering instruments as stated in Annex 7 of the Service Agreement.

This authorization remains valid until December 9th, 2007

Leica Geosystems AG
S&E Division

Reinz Zudrell
Director
Quality Management S&E



Heerbrugg, December 10th, 2004

Rolf Aerni
Manager Workshop Advisory
Customer Support & Services CSS

CH-9435 Heerbrugg (Switzerland)
Phone +41 71 727 31 31 Fax +41 71 727 4705
www.leica-geosystems.com





.... Your reliable partner

ELCOME- ISO 9001:2000 CERTIFICATE



DET NORSKE VERITAS MANAGEMENT SYSTEM CERTIFICATE

Certificate No. 03550-2006-AQ-BOM-RvA

*This is to certify that
the Quality Management System
of*

ELCOME TECHNOLOGIES PVT. LTD.

at
Elcome House, A-06, Infocity, Sector 34, Gurgaon - 122 022, INDIA

has been found to conform to the Quality Management System Standard:
ISO 9001:2000

This Certificate is valid for the following product or service ranges:

**IMPORT, MARKETING, SALES & AFTER SALES SERVICES OF
SURVEYING, ENGINEERING & GIS INSTRUMENTS**

Original Certification date:
2006-03-09

Place and date:
Chennai, 2006-03-11

This Certificate is valid until:
2009-03-09



for the Accredited Unit:
DNV CERTIFICATION B.V.,
THE NETHERLANDS

*Compliance to the Standard in respect to the indicated scope is
verified by the DNV approved registered Team Leader:*

Cmde K.B. Suri
Lead Auditor

D.K.S. Moorthy
Management Representative

Lack of fulfillment of conditions as set out in the Appendix may render this Certificate invalid.

DNV 5020/1.2

DNV CERTIFICATION B.V. Haastrechtstraat 7, 3079 DC Rotterdam, The Netherlands, TEL.INT.: +31 10 2922 688, FAX: +31 10 4790 708



.... Your reliable partner

Major Clients

- Airport Authority of India
- Anna University Chennai
- CBRI, Roorkee
- Central Mine Planning and Design Institute
- Central Mining Research Institute
- CESS, Trivandrum
- Coal India Ltd
- COMAU INDIA
- DRDO Labs
- Delhi Metro Rail Corporation
- Forest Survey of India
- Geological Survey of India
- HAL
- ICMAM, Chennai
- IITs (Delhi, Roorkee, Kanpur, Kharagpur, Mumbai)





.... Your reliable partner

Major Clients

- Indian Space Research Organization
- IIGM
- Indian Bureau of Mines, Nagpur
- IRCON
- Land Records Departments of various State Govts
- Larsen & Toubro
- Ministry of Defense
- MOIL, Nagpur
- NAVY
- National Hydrographic Office
- National Hydroelectric Power Corporation
- National Remote Sensing Agency
- NGRI, Hyderabad
- NIO, Goa, NIOT Chennai





.... Your *reliable* partner

Major Clients

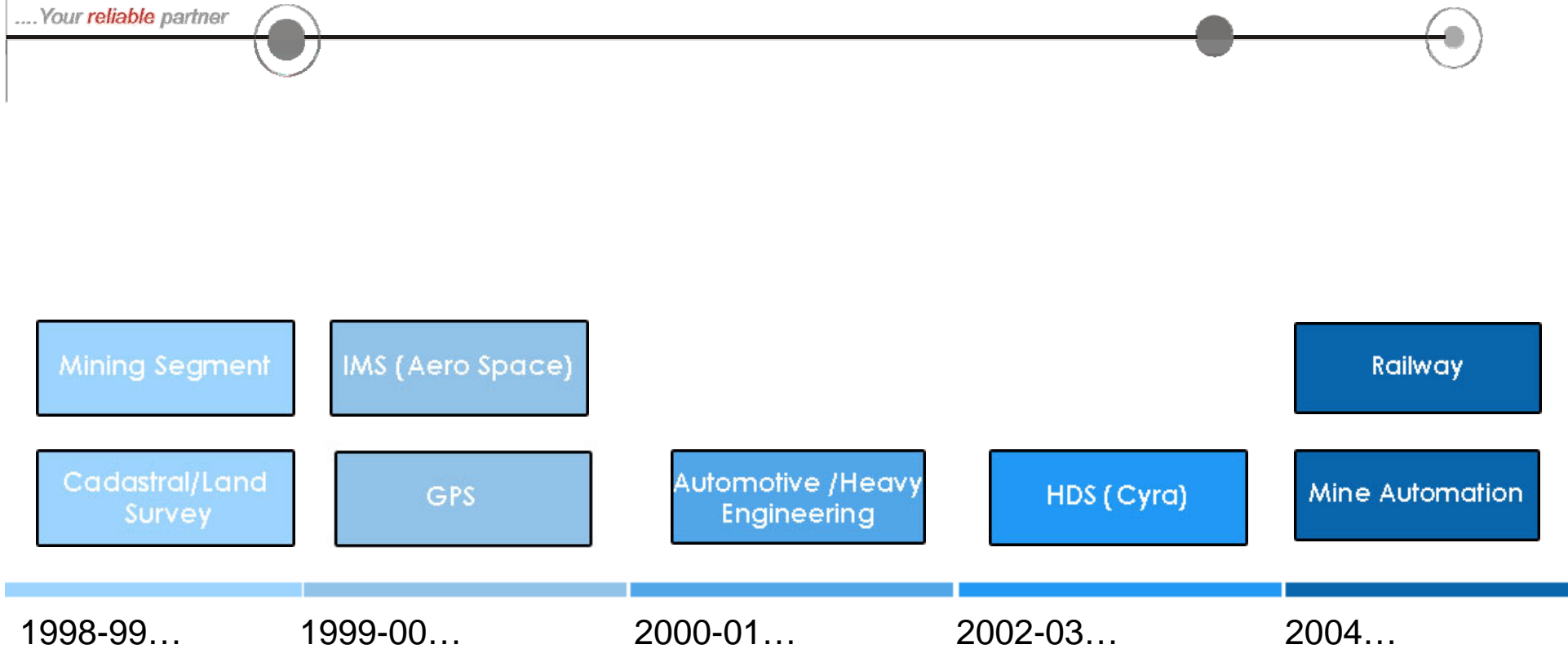
- Oil & Natural Gas Corporation
- Oil India Ltd
- Private Surveying & Construction Companies
- RITES
- Space Applications Center
- Survey of India
- TATA MOTORS
- VSSC
- Wadia Institute
- Construction Companies like Jayprakash, HCC, Simplex





Elcome Technologies Time Line

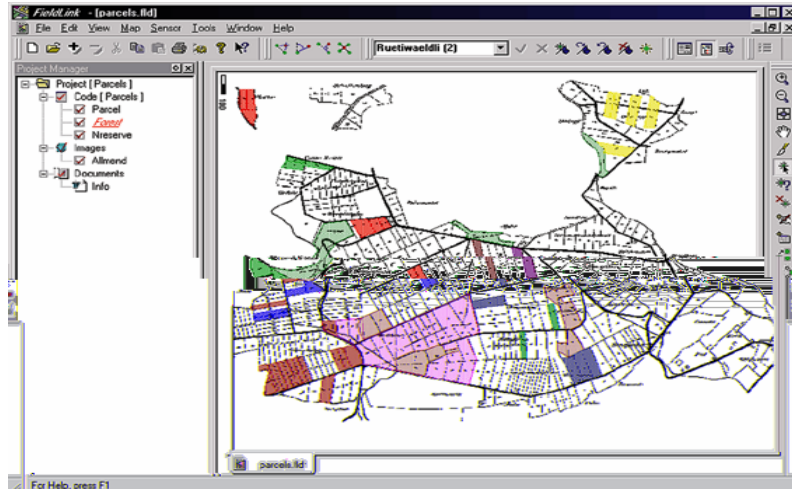
.... Your *reliable* partner





.... Your reliable partner

Cadastral/Land Survey



- Started Market Development in 1998
- First year we sold 25 Total Station in this market
- We were leader in this market until 2003 and now the market is driven by price
- Almost 100 to 125 Total Stations are sold in this market every year
- We are struggling due to price as this is tender driven segment.



....Your *reliable* partner

Mining Segment



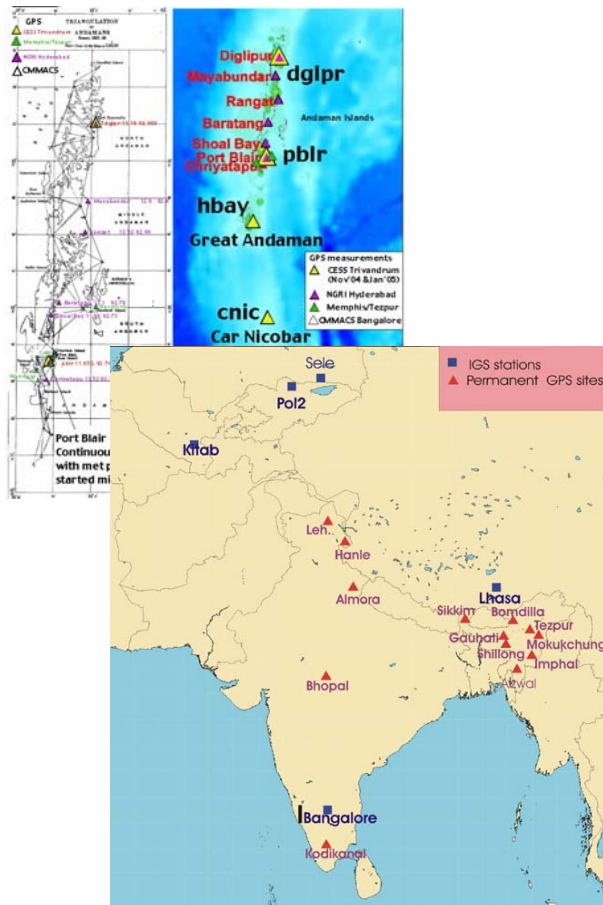
- Have sold over 100 Total Stations and 3 sets of GPS.
- Started in 1998 and we more or less dominate this market.
- Major competition comes from Sokkia & Topcon.
- Still the Strong Player.



.... Your reliable partner

GPS

- Started with NHO, SOI back in 1995.
- Trimble started dominating market in 1997
- Made few strategic move In 1998-99 and threw Trimble out of market except in Scientific community.
- As of mid of this year we enjoyed over 70% market share.
- Have seen loss of market share to Trimble due to very aggressive pricing of Trimble. Now Topcon and Thales getting very aggressive





.... Your reliable partner

IMS (Aerospace)



- Started activity in 1998-99.
- As of date we have monopoly in Aerospace market.
- We have sold over 100 theodolites and 3 Laser Trackers
- Now Farro, API is threatening due to their aggressive price.
- We need to protect this market.

Indian Space Research Organization (ISRO)



.... Your *reliable* partner

Automotive / Heavy Engineering

- Started in 2000-01
- Have had few successes.
- We are been threatened by FARO, API and Metronor.

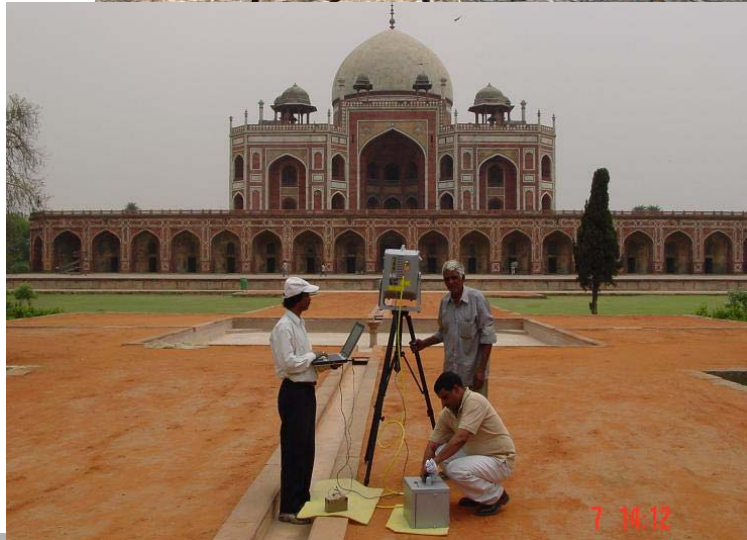




.... Your reliable partner

HDS (Cyra)

- Started activity in 2003.
- Have sold one scanner to ASI
- Lot of potential but slow maturity of the market.
- OpTech and Trimble are showing presence and hopefully this will help open up the market.



HDS(Cyrax) Activities In India



.... Your *reliable* partner

Mining Automation



- Have sold over 100 Total Station and 3 sets of GPS.
- Started in 1997 and we more or less dominant in this market.
- Major competition comes from Sokkia & Topcon.
- Still a Strong Player.



.... Your reliable partner

Railways



❑ Milestones

- We have already sold and installed GRP3000 system to RDSO (Research Design and Standards Organization). This organization defines standards for all the railways in India. Once the system is successful with this organization it will be mandatory for all the railways to use this kind of system.

❑ Challenges & Risks

- Lack of awareness
- Not suitable for long length railway lines
- Software still having bugs and limitations