



Getty Images

Health Electrification and Telecommunications Alliance A USAID Global Development Alliance

The Health Electrification and Telecommunications Alliance (HETA) is Power Africa's flagship initiative for health facility electrification and digital connectivity in sub-Saharan Africa. Our mission is to catalyze public-private partnerships for sustainable business models that increase access to reliable, renewable energy and digital connections. These improvements are vital for supporting equitable access to care for people across the region.

As a Global Development Alliance, HETA is a partnership in which the U.S. government and the private sector leverage their combined resources, expertise, and capabilities to support country health systems to adopt renewable energy solutions. We convene partners to collaboratively design market-based solutions that meet facilities' and communities' needs while making it easier and less costly to invest in the systems that power access to high-quality healthcare and productive uses of energy.

The Challenge

An estimated 100,000 health facilities in sub-Saharan Africa lack reliable access to the electricity and digital connectivity they need to equitably serve their communities. Without these services, facilities can't keep the lights on for nighttime births or emergency surgeries, run equipment that keeps vaccines viable, or modernize their communication and records management systems. This creates gaps in service delivery, limits access to life-saving healthcare, and diminishes health systems' resilience to climate change and other threats.

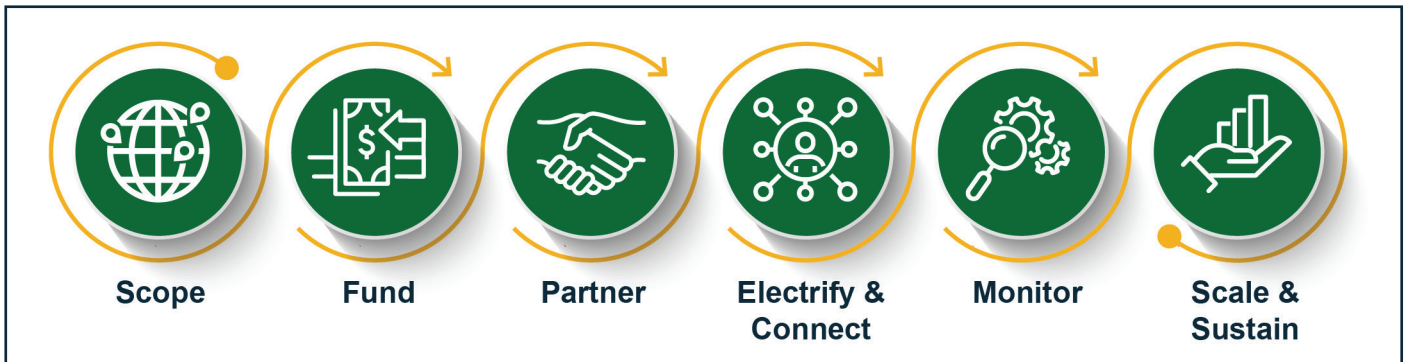
HETA's Solution

- HETA links health goals with private sector business interests to co-fund and collaboratively design renewable energy systems linked to mobile networks. We are exploring a range of context-driven business models that approach energy as a service—where the health system pays for electricity delivered rather than equipment installed. Successful business models will generate revenue to ensure long-term operations and maintenance of the systems—addressing a key challenge for sustainability and creating job opportunities in the communities where we work.



How We Work

HETA works with diverse partners to design solutions that meet each facility's needs for power and digital connectivity, extend the benefits of energy access to nearby communities, and accelerate progress toward greater resilience and decarbonization of the health sector. HETA can support a wide range of health facilities—from rural, off-grid clinics to diagnostic laboratories and facilities providing temperature-controlled storage of vaccines and other health commodities.



Scope – HETA selects facilities in partnership with the host-country government, USAID, and private sector partners. Selections are based on the need for new or improved electrification and digital connectivity and the availability of co-funding from other donors and private sector partners. We use evidence to understand the context and collaboratively design business models that will generate impact and return on investment.

Fund – In-country work starts when a USAID country mission transfers funding to HETA, which we match with private sector contributions.

Partner – We work closely with the government, finalize agreements with private sector partners, and engage stakeholders in detailed implementation planning to deliver the right mix of energy and telecommunication systems. This includes designing business models to sustain long-term operations and maintenance (O&M).

Electrify & connect – System designs use renewable energy technology (solar photovoltaics and battery storage, for example) and incorporate internet connectivity through cell towers or other infrastructure. Where feasible, systems can be sized to enable off-take—sales of surplus power for productive uses such as refrigeration, water pumps, and battery charging. Off-take generates revenue for O&M while supporting livelihood opportunities for community members.

Monitor – Efficient, ongoing monitoring of the installed systems and the resulting improvements in health outcomes helps us understand what works, prepare for scale-up, and feed into country-level and regional learning cycles for improved health facility electrification and digital connectivity.

Scale & sustain – As we expand to more health facilities, the business models HETA supports will secure sustainable revenue for O&M—providing lasting benefits for people, communities, and health systems while creating pathways for greater investment at the nexus of energy, health, and climate in sub-Saharan Africa.





Power Africa/Tochukwu Mbachuwrong

Why Invest in HETA?

HETA goals can only be achieved through co-creation and contributions from an array of partners inspired to support health system resilience in sub-Saharan Africa. There is space for many kinds of contributions, from directly funding capital expenses to sharing technology innovations and expertise that generate market-based solutions. Together, we will leverage funds from Power Africa and USAID country missions to make it easier to invest in this emerging market and secure long-term operations and maintenance solutions—with lasting benefits for people’s health and for the climate.

An Open Partnership Platform

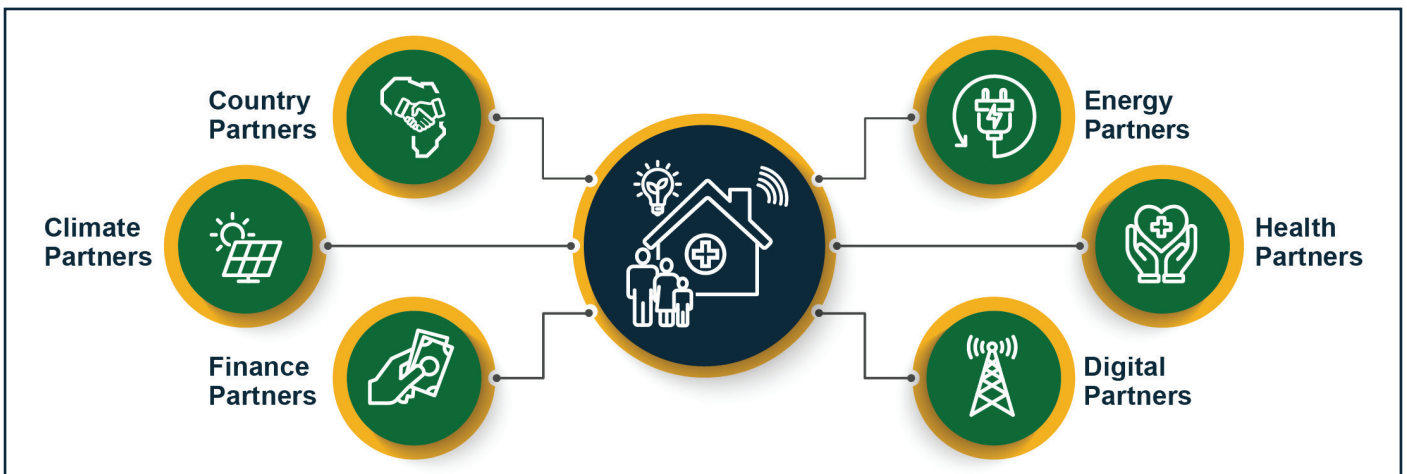
Our partners represent diverse sectors and industries—for-profit companies, not-for-profit organizations, charitable foundations, finance and investment firms, energy and telecommunications companies, and more.

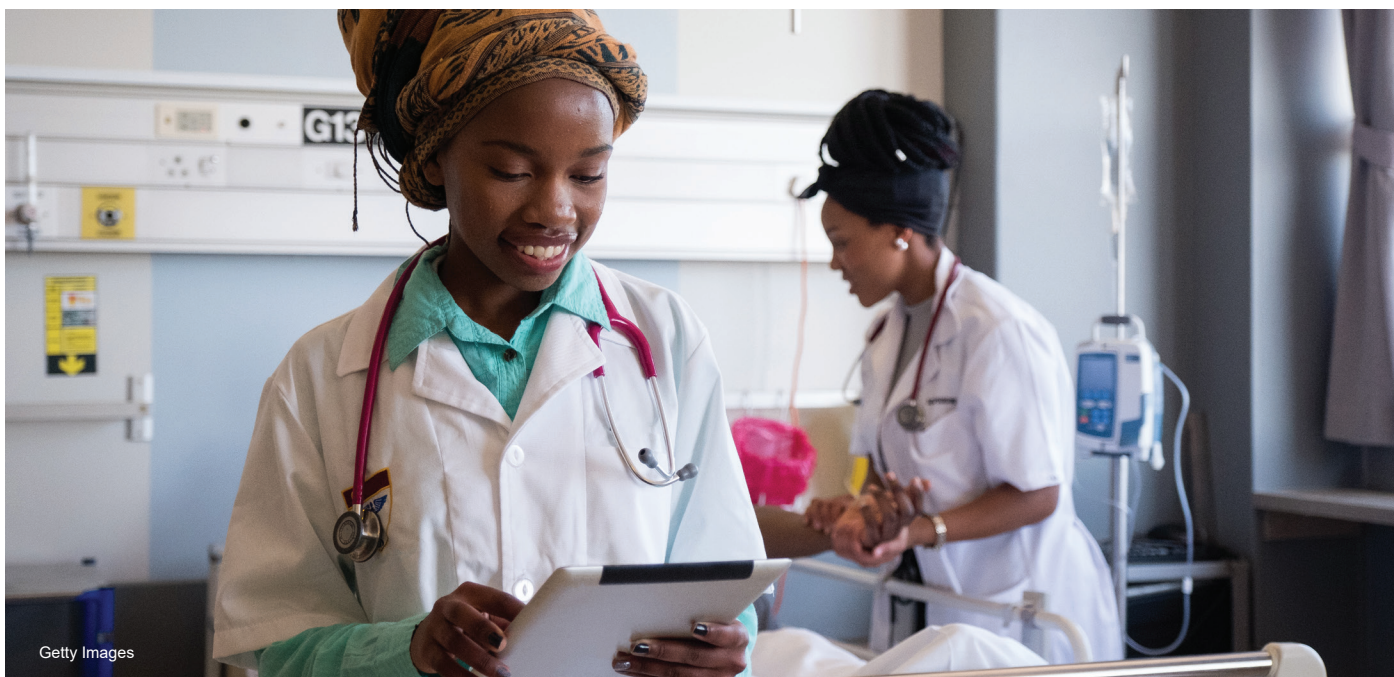
Country governments – Your priorities drive HETA’s work and your commitments strengthen the enabling environment for reliable, renewable energy and digital inclusion for the health sector.

Corporate partners & investors – Your support helps fill gaps in access to capital, removing a main barrier to health facility electrification and digital connectivity. By partnering with HETA, you gain access to bankable projects, reduced transaction costs, and avenues to scale existing operations, while providing catalytic funding for environmental and social change.

Energy & telecommunications service providers – Partnering with HETA provides access to new or expanded markets and capital at reduced transaction costs, while contributing to social impact as you work with us to procure, install, operate, and maintain energy systems linked to mobile networks.

Donors & philanthropic organizations – Your contributions provide essential co-funding for our work and resources to deepen HETA’s impact in areas that align with your interest—such as health system strengthening, improved access to essential services such as clean water, and decarbonizing the health sector.





Getty Images

Who We Are

HETA is a USAID Global Development Alliance that works with African governments to deliver renewable energy and digital connectivity.

Power Africa provides \$47 million in initial funds and offers the convening power of the U.S. government to enable and enrich HETA's work. A U.S. government-led partnership coordinated by USAID, Power Africa convenes the collective resources of the private sector, international development organizations, and governments from around the world to increase energy access and to end energy poverty in sub-Saharan Africa.

Guiding HETA's work are four founding partners with expertise in partnering, funding, and implementing programs at the intersections of health, climate, energy, and telecommunications.

Abt Global is the lead integrator for HETA, catalyzing partnerships, funding, and expertise to help health systems make the transition to renewable energy, expand digital inclusion, and enable healthier, more resilient communities.

RESOLVE lends its expertise in social enterprise development and collaborative leadership as we grow a vibrant, sustainable alliance membership.

bechtel.org (Bechtel's social enterprise) and **Orange**, our first two private sector leverage partners, are demonstrating how infrastructure co-investments can maximize social impact.

Help Us Build a Sustainable Alliance

The scope of the need requires a lasting solution to reach the 100,000 or more health facilities that lack access to reliable, renewable energy and digital connections. From day 1, HETA is working with partners to build an institution that will be able to continue beyond the life of this Global Development Alliance.

Toward that vision, we are seeking anchor partners to build the governance structures and self-sustaining model for an independent organization that can continue catalyzing partnerships and investment in health facility electrification and digital connectivity well into the future.



CONTACT

Gina Cady, Technical Advisor, Power Africa
Coordinator's Office: gcady@usaid.gov

Joan Chahenza, HETA Project Director
joan_chahenza@abtassoc.com