

# January 2, 2025

## Intense snow band/snow squall moves through central Iowa

Highway 30 in Boone around 8 am (Image Iowa DOT)

### Event Summary

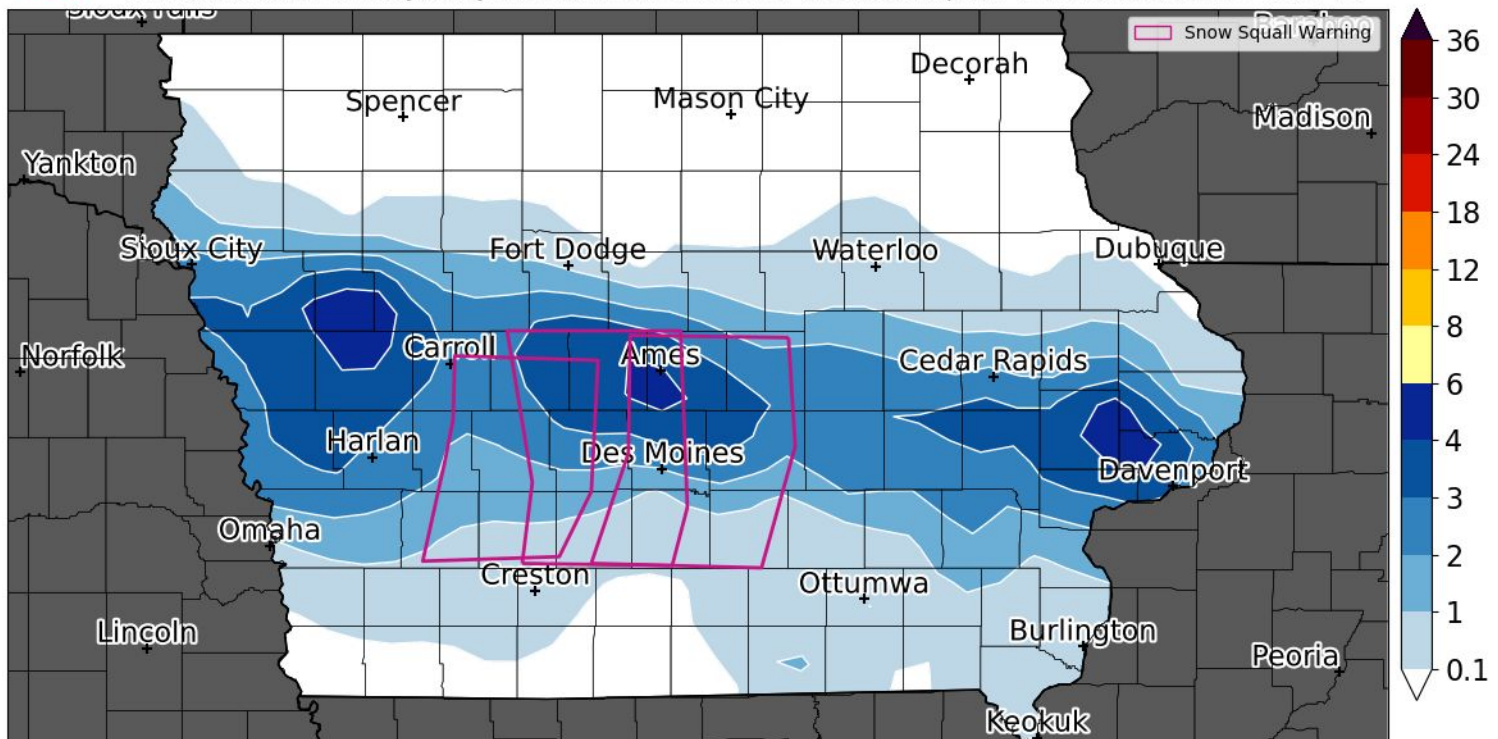
An intense snow band, or snow squall, formed and moved over western into central Iowa around and after sunrise on January 2, 2025. This intense snow band caused quick changes in visibility and brought several inches of snowfall in a swath across central Iowa. It also resulted in several Snow Squall Warnings being issued, including the Des Moines metro and parts of I-80 and I-35.

## Snow Reports



### 2 January 2025 - IEM Snowfall Total Analysis

Snowfall totals till 8 AM 3 January 2025 from NWS COOP, LSR, CoCoRaHS Reports; IEM 2022-2023 Winter Storm #6



Iowa Environmental Mesonet :: generated 03 January 2025 09:51 AM

This intense snow band brought 2 to 4 and locally 5 inches of snow in a swath across central Iowa. The purple polygons were the Snow Squall Warnings issued. Click image to view interactive storm report map.

# Storm Photos

I-80 @ Minden Interchange (CBTV39) 01/02/2025 04:59:00



I-80 @ Pinewood Ave (80TV88) 01/02/2025 05:01:08



I-80 near Minden (left) and I-80 near Menlo (right) are separated by 60 miles, but show very different conditions at 5am as the intense snow band is forming over western Iowa. Images from Iowa DOT.

N - US 30 @ S Story St (BNTV01) 01/02/2025 07:52:46



Highway 30 in Boone (left) has near whiteout conditions as the intense snow band moves through the area shortly before 8am. Meanwhile at the same time only 20 miles away, there is only light snow falling in Nevada with good visibility. Images from Iowa DOT.



All information is PRELIMINARY. Page last updated: January 6, 2025 6am.

# Storm Photos

S @ NE 126th Ave (DMTV062) 01/02/2025 07:43:24



I-35 north of Ankeny with a vehicle in the ditch. Image Iowa DOT.

## CALLS FOR SERVICE

January 2nd (12:00 am - 6:00 pm)

81

Crashes Covered

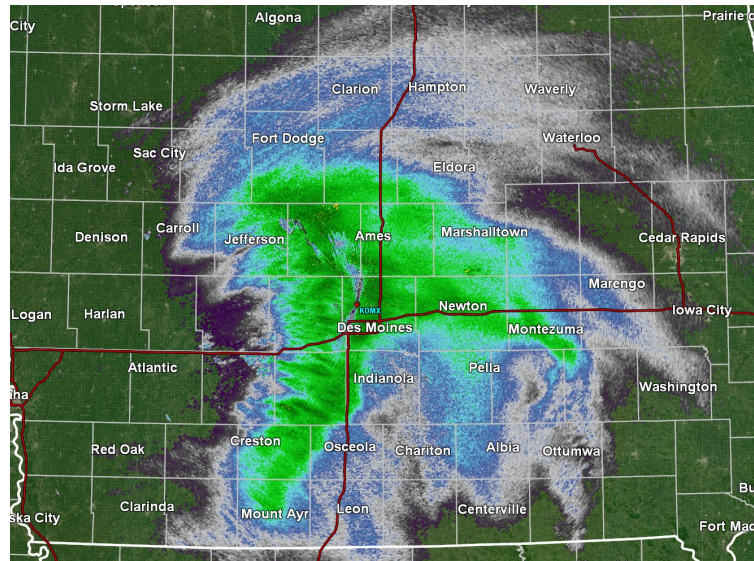
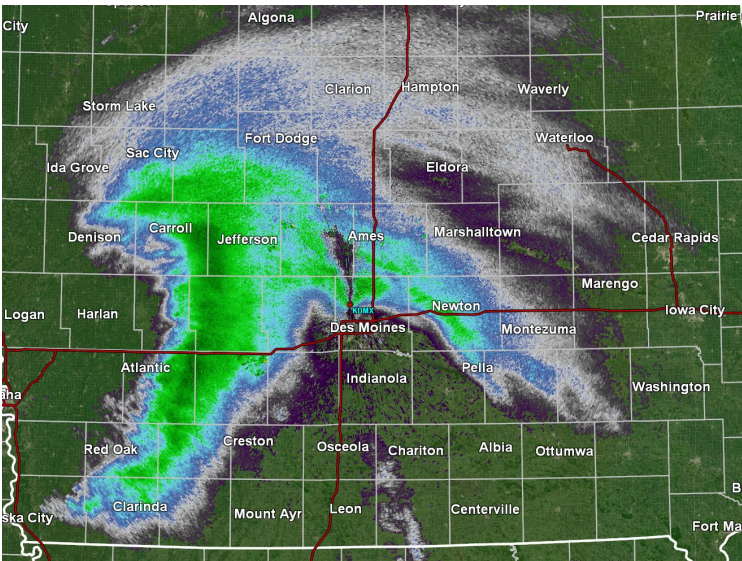
116

Motorist Assists



Iowa State Patrol's calls for service during this event. Image Iowa State Patrol.

# Radar Imagery



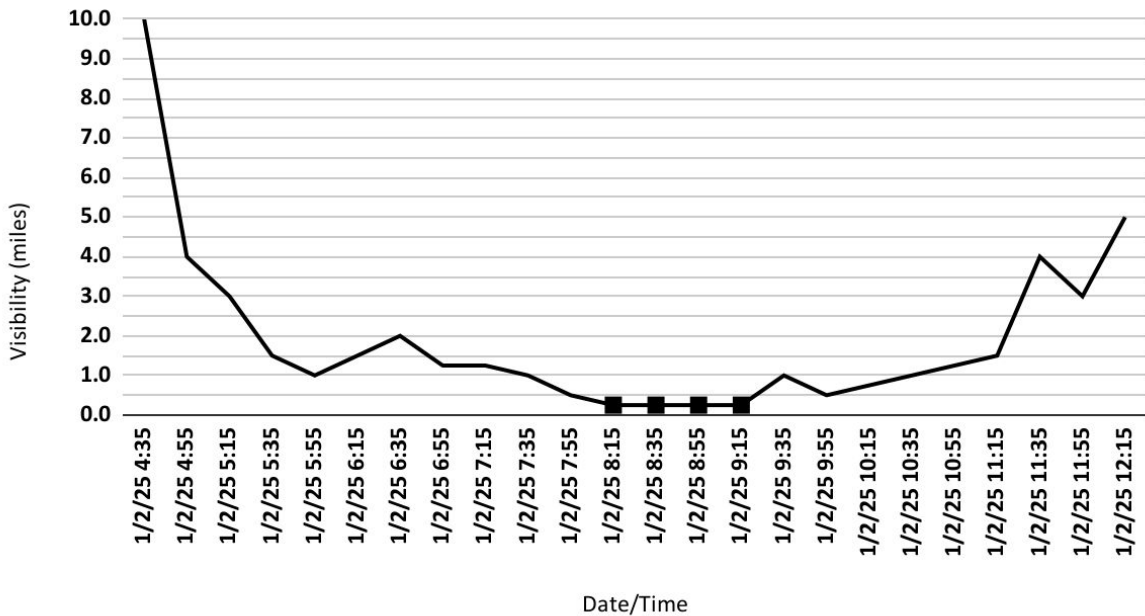
Intense snow band west of Des Moines at 7:32am (left) and as it is moving over the Des Moines metro at 8:19am (right).



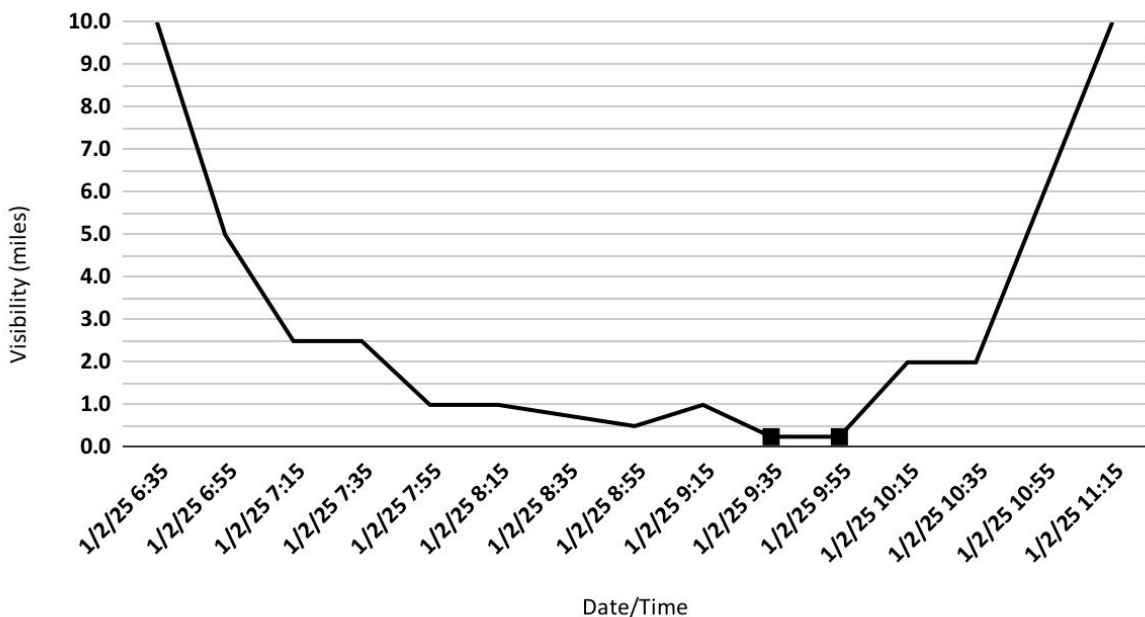
All information is PRELIMINARY. Page last updated: January 6, 2025 6am.

# Visibility Time Series

## Boone - Visibility



## Ankeny - Visibility



The intense snow band dropped visibilities briefly at multiple automated weather observing sites. Boone (top) reported  $\frac{1}{4}$  mile visibility (black squares) for at least an hour while Ankeny (bottom) reported similar conditions for at least 20 minutes.



# Snow Squall Warning

## Snow Squall Warning

Valid Until  
8:30 AM CST Thursday  
January 2, 2025

### Threat Information



#### Hazard

White out conditions  
in heavy blowing snow



#### Impact

Dangerous life-  
threatening travel

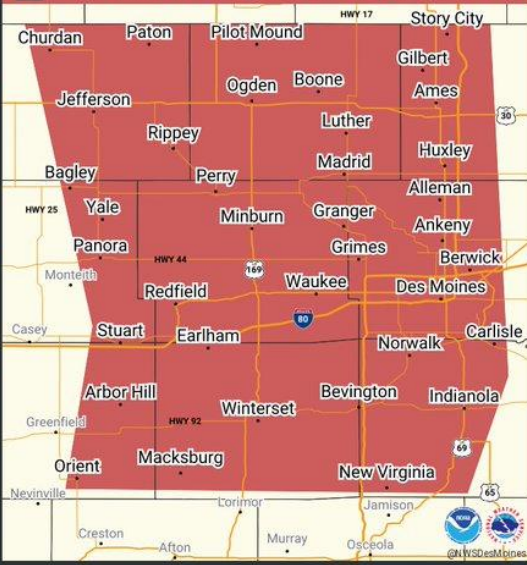
### Potential Exposure



Population: 791,575  
Highways: I-35  
I-80  
I-235



**⚠️ This is a life threatening situation! Delay or avoid travel!**



## Notification Center

### Emergency Alert

7:24 AM



National Weather Service: Snow Squall Warning until 8:30 AM CST. Slow down or delay travel! Be ready for a sudden drop to near zero visibility and icy roads in heavy snow.

Several snow squall warnings were issued during this event. The one shown at left triggered the Wireless Emergency Alert (WEA) on many mobile devices with an example of what that text looked like shown above.

## SNOW SQUALLS

- Intense bursts of snow and wind
- Short duration
- Whiteout visibility
- Rapidly deteriorating road conditions

### National Weather Service **SNOW SQUALL WARNINGS**

- Issued when a snow squall is occurring or imminent
- Typically in effect for 30-60 minutes in a small, targeted area
- Can trigger a Wireless Emergency Alert to your phone
- When issued, slow down or delay travel

Click image to view larger or read more about snow squalls [here](#).

## What are snow squalls?

Snow Squalls are brief, but intense snow events bringing quick bursts of snow and near-zero visibility resulting in treacherous travel conditions. They can also be accompanied by strong winds or plunging Arctic air creating flash freeze conditions. A snow squall warning, similar to a tornado or severe thunderstorm warning, alerts you to these dangerous travel conditions. If you're caught on the road during a snow squall, slow down & safely pull over or exit the road at the next opportunity. Otherwise, delay travel.



All information is PRELIMINARY. Page last updated: January 6, 2025 6am.