

# **Late April 2007 Severe Weather Event**

## **Eagle Pass and Del Rio Tornadoes**

The devastating late April of 2007 severe weather events, continued the winter/spring 2007 severe weather pattern, that began with severe weather January 13, 2007, went dormant in February, and returned with renewed vigor in March and April. A spring storm system formed over the southwest U.S. on Monday, April 23rd. This storm system caused severe weather events at Del Rio on Monday evening, April 23rd, followed by a widespread severe weather event the evening of April 24th to the predawn hours of Wednesday, April 25th. Severe thunderstorms, with tornadoes, struck Del Rio on Monday evening the 23rd. A Tornado was reported at 806 pm and again at 834 pm in the Del Rio Area. Tornado touchdowns were reported north and south of downtown Del Rio. A 64 mph wind gust was measured at Laughlin AFB at 838 pm CDT. Hail sizes of 0.88 to 1.75 inches was observed in the Del Rio area on April 23rd.

[Severe Weather Reports from April 23<sup>rd</sup> are included at the end of this document.](#)

Just 24 hours later, in the evening of Tuesday, April 24th, a tornado touched down in the Eagle Pass Area. As the spring storm system moved to West Texas in the afternoon of the 24th, a widespread severe weather event developed rapidly just south of Del Rio and west to northwest of Eagle Pass, near the Rio Grande, and then moved east as a line of thunderstorms across South Central Texas Tuesday evening to the predawn hours of Wednesday, April 25th. On the evening of Tuesday the 24th, a devastating tornado struck Eagle Pass at 701 pm. The tornado was rated EF-3 on the enhanced Fujita Scale, had a path width of one-quarter mile and a path length near one mile long. These devastating severe, tornadic thunderstorms in the Eagle Pass area caused 7 Fatalities, more than 80 Injuries, and numerous property damage to homes, businesses and an elementary school in the Eagle Pass Area. The severe thunderstorms then proceeded to move across the rest of South Central Texas from 8 pm, April 24th through 6 am, Wednesday April 25th. Damaging winds and hail was reported in Maverick, Dimmit, Zavala, Medina, Bexar, Atascosa, Wilson, Guadalupe, Caldwell, Gonzales Bastrop, Fayette, and Lavaca Counties.

[Severe Weather Reports from April 24th and April 25<sup>th</sup> are included at the end of this document.](#)

**A Survey Report of the Eagle Pass Tornado Follows:**

A supercell thunderstorm formed in the Mexican mountains west of Piedras Negras, across the Rio Grande from Eagle Pass. Reports from west of the Rio Grande indicate that a large and devastating tornado struck Piedras Negras from the west, then dissipated on the west side of the Rio Grande. The supercell crossed

the Rio Grande near 7:00 pm CDT and struck the community of Rosita Valley near 7:01 pm CDT. Severe outflow winds from the storm estimated at between 80 mph and 100 mph struck the community first, causing minor damage to houses and mobile homes. Roofs were partially lifted, exteriors of homes were damaged, and trees were knocked over. Following the wind damage, hail to the size of golfballs struck the area, along with very heavy rain.

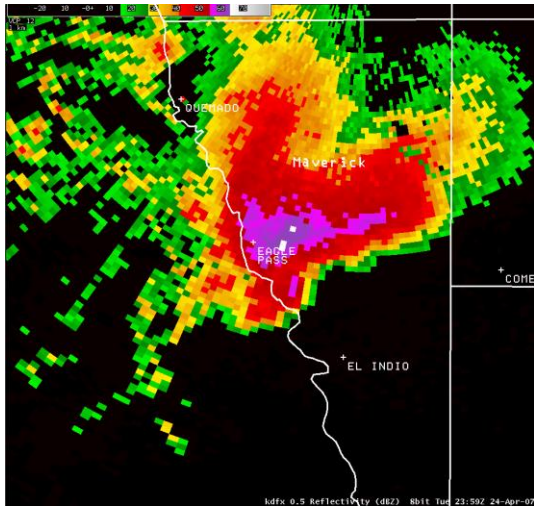
Following the winds and hail, the tornado struck next. The team found the tornado touchdown point approximately one-quarter mile to the southwest of the Rosita Valley Elementary School. It struck a four room home, destroying the outer walls and leaving only the interior walls standing. This damage was rated as EF-2 damage. The tornado then moved toward the east-northeast, directly toward the school. Along its path it damaged three more homes and destroyed a fourth. Damage to the three homes was rated EF-1 with the destroyed home rated EF-2. The tornado next struck a mobile home, tearing off its frame and tossing the debris into the school building. This also indicated EF-2 damage. Then the tornado crossed Rosita Valley Road, destroying mobile homes and damaging homes and tossing the debris into the south and west sides of the Rosita Valley Elementary School building. The initial strike points at the school showed only minor EF-0 damage; however, damage was severe from the center of the school northeastward. It appeared that the tornadic winds were able to open enough of the center part of the roof to enter the interior of the school. These winds as well as winds that entered through wall openings caused severe damage to the north and south wings of the building. This damage indicated wind speeds approaching 140 mph and damage at EF-3 level. To the northwest of the school were two brick retail buildings; both were well-constructed. Outer walls were destroyed in each with damage to interior walls in one of the structures. This also suggested wind speeds near 140 mph and EF-3 level damage.

Finally as the tornado exited the school area it struck an area of single family houses some 200 yards to the northeast. Most of the houses were swept off their foundations and many of them were completely flattened. This damage suggested wind speeds approaching 150 mph, the highest speeds found at Rosita Valley. This was mid-range EF-3 damage. In conclusion, the tornado was rated EF-3 on the Enhanced Fujita Scale with a path width near one-quarter mile and a path length near four miles.

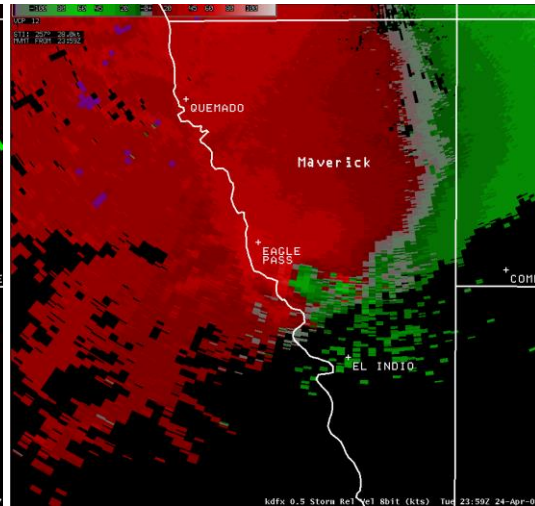
In all the tornado destroyed one elementary school, along with 59 manufactured homes and 57 houses. Major damage was reported to 21 manufactured homes and 19 houses with minor damage to 10 manufactured homes, 22 houses, and 9 apartments. There were seven deaths in Rosita Valley as a result of the tornado. A family of five in one mobile home were killed as it was destroyed and rolled into the Rosita Valley Elementary School. Two other victims were found, one in a permanent home that had collapsed and one in another mobile home.

**One Half Degree Radar Reflectivity and Velocity Imagery from the Eagle Pass**

## Tornado Event Follows.



**0.5 Degree Radar Reflectivity**



**0.5 Degree Radar Velocity**

Loops of 0.5 Degree Elevation of Radar Reflectivity and Storm Relative Velocity follows.

- [0.5 Degree Loop of Radar Reflectivity](#)
- [0.5 Degree Loop of Radar Storm Relative Velocity](#)

A link to Satellite Imagery and Discussion from the Space Science and Engineering Center at the University of Wisconsin-Madison follows. [Click Here for the CIMSS Satellite Images and Discussion](#)

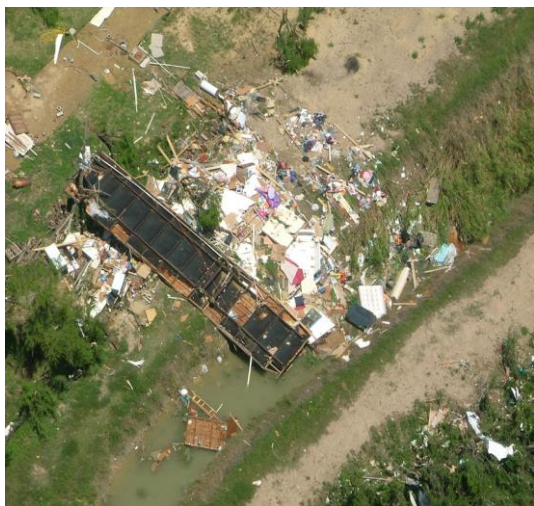
Four Photos of the Storm Damage Follow



**School Damage**



**School Roof Damage**



**Mobile Home Damage**



**Truck Damage**

## April 23, 2007 Severe Weather Reports

PRELIMINARY LOCAL STORM REPORT...SUMMARY  
 NATIONAL WEATHER SERVICE AUSTIN/SAN ANTONIO TX

..TIME...	...EVENT...	...CITY LOCATION...	...LAT.LON...
..DATE...	....MAG....	..COUNTY LOCATION..ST..	...SOURCE....
	..REMARKS..		
0806 PM 04/23/2007	TORNADO	4 S DEL RIO VAL VERDE TX	29.32N 100.90W FIRE DEPT/RESCUE
0806 PM 04/23/2007	HAIL E1.75 INCH	4 S DEL RIO VAL VERDE TX	29.32N 100.90W FIRE DEPT/RESCUE
	FIRE DEPT REPORTED LARGER THAN GOLF BALL		
0825 PM 04/23/2007	HAIL E0.88 INCH	DEL RIO VAL VERDE TX	29.38N 100.90W TRAINED SPOTTER
0834 PM 04/23/2007	TORNADO	DEL RIO VAL VERDE TX	29.38N 100.90W LAW ENFORCEMENT
	TOUCHDOWNS NORTH AND SOUTH OF DOWNTOWN DEL RIO		
0838 PM 04/23/2007	TSTM WND GST M64.00 MPH	LAUGHLIN AFB VAL VERDE TX	29.36N 100.78W OTHER FEDERAL
0840 PM 04/23/2007	HAIL E0.88 INCH	LAUGHLIN AFB VAL VERDE TX	29.36N 100.78W TRAINED SPOTTER

0840 PM TSTM WND DMG LAUGHLIN AFB 29.36N 100.78W  
04/23/2007 VAL VERDE TX TRAINED SPOTTER

TELEPHONE POLE DOWN

## April 24 and 25, 2007 Severe Weather Reports

PRELIMINARY LOCAL STORM REPORT...SUMMARY  
NATIONAL WEATHER SERVICE AUSTIN/SAN ANTONIO TX

..TIME... ..EVENT... ..CITY LOCATION... ..LAT.LON...  
..DATE... ..MAG.... ..COUNTY LOCATION..ST.. ..SOURCE....  
..REMARKS..

0610 PM HAIL LAUGHLIN AFB 29.36N  
100.78W  
04/24/2007 E0.50 INCH VAL VERDE TX TRAINED  
SPOTTER

AF WEATHER OBSERVER

0643 PM HAIL EAGLE PASS 28.71N  
100.49W  
04/24/2007 E1.00 INCH MAVERICK TX TRAINED  
SPOTTER

0654 PM HAIL EAGLE PASS 28.71N  
100.49W  
04/24/2007 E1.75 INCH MAVERICK TX LAW  
ENFORCEMENT

0701 PM TORNADO 3 SE EAGLE PASS 28.68N  
100.46W  
04/24/2007 MAVERICK TX BROADCAST  
MEDIA

\*\*\* 7 FATAL, MORE THAN 80 INJURED \*\*\* AN ELEMENTARY  
SCHOOL WAS DESTROYED AND A NUMBER OF MOBILE HOMES  
DAMAGED.

THE TORNADO WAS RATED EF-3 ON THE ENHANCED FUJITA  
SCALE  
WITH A PATH WIDTH OF ONE-QUARTER MILE AND A PATH  
LENGTH  
NEAR ONE MILE.

0814 PM HAIL CRYSTAL CITY 28.69N 99.83W  
04/24/2007 E1.75 INCH ZAVALA TX LAW  
ENFORCEMENT

0831 PM HAIL 1 NE BIG WELLS 28.58N 99.56W  
04/24/2007 E2.75 INCH DIMMIT TX PUBLIC

TENNIS BALL TO BASEBALL SIZED HAIL IN RURAL AREA NE OF  
BIG WELLS.

0831 PM TSTM WND GST 1 NE BIG WELLS 28.58N 99.56W  
04/24/2007 M76.00 MPH DIMMIT TX PUBLIC

0831 PM TSTM WND GST 1 NE BIG WELLS 28.58N 99.56W  
04/24/2007 E65.00 MPH DIMMIT TX PUBLIC

1120 PM HAIL YANCEY 29.15N 99.13W  
04/24/2007 E1.75 INCH MEDINA TX LAW  
ENFORCEMENT

1125 PM HAIL CARRIZO SPRINGS 28.53N 99.86W  
04/24/2007 E1.75 INCH DIMMIT TX LAW  
ENFORCEMENT

1140 PM HAIL DEVINE 29.15N 98.90W  
04/24/2007 E1.75 INCH MEDINA TX LAW  
ENFORCEMENT

GOLF BALL SIZED HAIL AND TREES DOWN.

1145 PM HAIL NATALIA 29.19N 98.86W  
04/24/2007 E1.75 INCH MEDINA TX LAW  
ENFORCEMENT

GOLF BALL SIZED HAIL AND TREES DOWN.

1204 AM HAIL HELOTES 29.57N 98.69W  
04/25/2007 E0.88 INCH BEXAR TX TRAINED  
SPOTTER

1215 AM TSTM WND DMG 4 S SOMERSET 29.17N 98.66W  
04/25/2007 ATASCOSA TX LAW  
ENFORCEMENT

MOBILE HOME ROLLED OVER. TREES DOWN ON ROOFS. FEW  
INJURIES.

1240 AM TSTM WND DMG 10 W LA VERNIA 29.35N 98.28W  
04/25/2007 BEXAR TX NWS EMPLOYEE

NUMEROUS MESQUITE TREES BLOWN OVER.

1250 AM TSTM WND DMG 7 E FLORESVILLE 29.14N 98.04W  
04/25/2007 WILSON TX PUBLIC

NUMEROUS MESQUITE TREES UPROOTED, SEVERAL SHEDS  
DAMAGED.

0100 AM TSTM WND DMG 1 SSW SEGUIN 29.57N 97.98W  
04/25/2007 GUADALUPE TX AMATEUR RADIO

HOMES  
A LARGE TREE UPROOTED, A ROOF REMOVED AND SEVERAL  
DAMAGED.

0105 AM TSTM WND DMG 10 SSE LA VERNIA 29.22N 98.05W  
04/25/2007 WILSON TX EMERGENCY  
MNGR

NUMEROUS TREES BLOWN OVER, GENERALLY, NORTH OF HIGHWAY  
97  
AND COUNTY ROAD 539.

0105 AM HAIL 5 SE NEW BRAUNFELS 29.65N 98.06W  
04/25/2007 M0.88 INCH GUADALUPE TX NWS EMPLOYEE

0110 AM TSTM WND DMG 2 N FLORESVILLE 29.17N 98.16W  
04/25/2007 WILSON TX CO-OP  
OBSERVER

NUMEROUS TREES AND POWER LINES DOWN, PERSONS WITHOUT  
POWER, SOME HOMES DAMAGED.

0114 AM TSTM WND DMG STOCKDALE 29.23N 97.96W  
04/25/2007 WILSON TX EMERGENCY  
MNGR

SEVERAL TREES AND POWER LINES KNOCKED DOWN, BARN  
UNROOFED, LARGE MOVIE SCREEN TAKEN DOWN.

0115 AM HAIL 5 E NEW BRAUNFELS 29.70N 98.03W  
04/25/2007 E0.88 INCH GUADALUPE TX NWS EMPLOYEE

0125 AM TSTM WND DMG 1 S LOCKHART 29.86N 97.68W  
04/25/2007 CALDWELL TX LAW  
ENFORCEMENT

TO  
\*\*\* 1 INJ \*\*\* NUMBER OF LARGE TREES DOWN. WIND DAMAGE  
HOMES. ROOF BLOWN OFF A HOME. 2 BLOCKS N OF FM 20.

0130 AM TSTM WND DMG 3 S LOCKHART 29.83N 97.68W  
04/25/2007 CALDWELL TX LAW  
ENFORCEMENT

DOWN,  
NUMEROUS POWER LINES DOWN, SEVERAL HOUSE WERE BLOWN  
SEVERAL ROOFS BLOWN OFF.

0130 AM TSTM WND DMG 3 NE SAN ANTONIO 29.49N 98.47W  
04/25/2007 BEXAR TX LAW  
ENFORCEMENT

TREE FELL ON HOUSE.

0138 AM TSTM WND DMG 10 SW GONZALES 29.41N 97.57W  
04/25/2007 GONZALES TX LAW  
ENFORCEMENT

WIND DAMAGE TO BARN IN COST, TX.

0200 AM TSTM WND DMG 5 SE SEGUIN 29.53N 97.91W  
04/25/2007 GUADALUPE TX UTILITY  
COMPANY

NUMEROUS OAK AND PECAN TREES BLOWN DOWN.

0215 AM TSTM WND DMG 5 S BASTROP 30.04N 97.31W  
04/25/2007 BASTROP TX LAW  
ENFORCEMENT

NUMEROUS POWER LINES AND TREES DOWN, BLOCKING  
ROADWAYS.

0215 AM TSTM WND GST LA GRANGE 29.91N 96.88W  
04/25/2007 E50.00 MPH FAYETTE TX AMATEUR RADIO

WINDS EST 50-60 MPH. TREES DOWN IN LA GRANGE AND  
FLATONIA.

0220 AM TSTM WND DMG 10 S HALLETTSVILLE 29.30N 96.94W  
04/25/2007 LAVACA TX LAW  
ENFORCEMENT

NUMEROUS POWER LINES AND TREES DOWN, A HOUSE WAS BLOWN  
AWAY, POSSIBLE TORNADO.