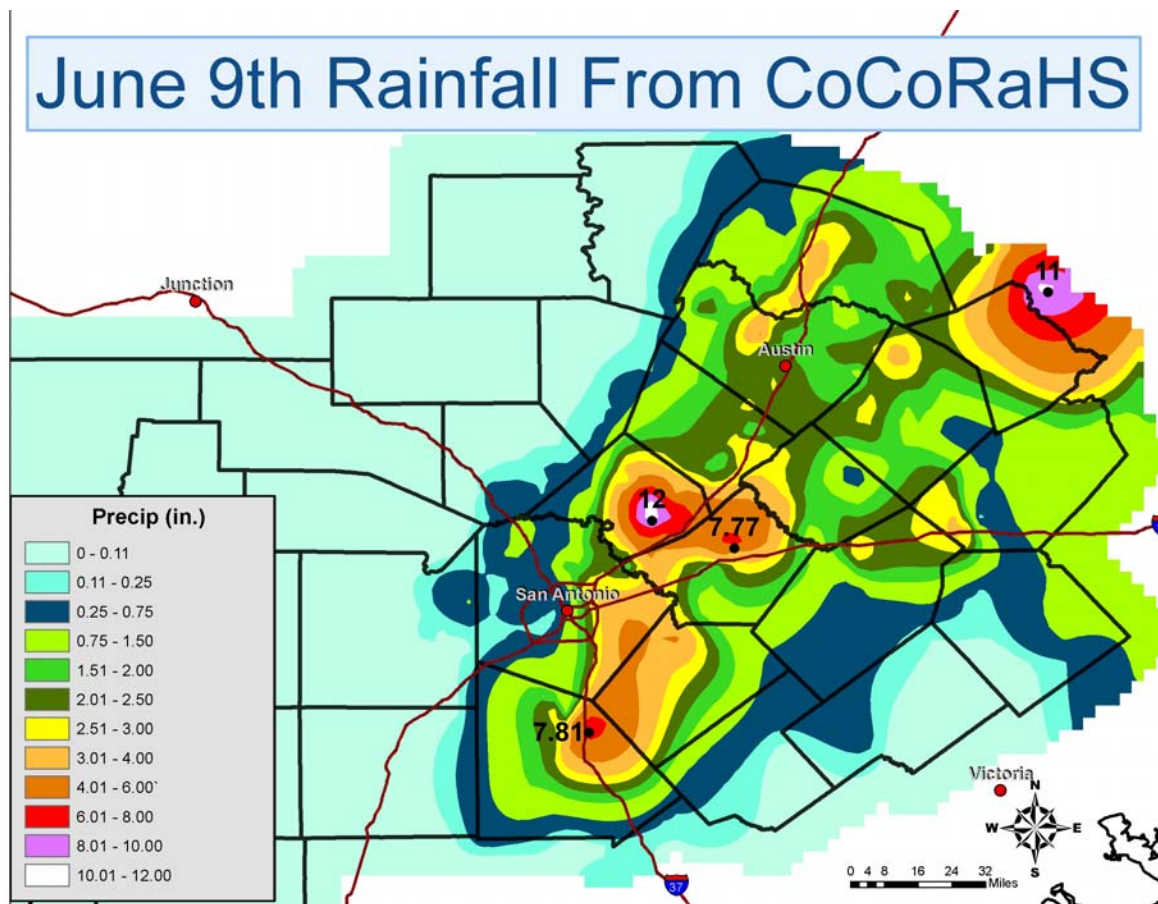


## June 9, 2010 Heavy Rainfall Event

A significant rainfall event during the late evening of June 8<sup>th</sup> and lasting into the afternoon hours of the June 9<sup>th</sup> caused massive flooding for portions for South Central Texas. Abundant tropical moisture coupled with a slow moving upper level low pressure system which moved northeast across the area, forming a large complex of showers and thunderstorms. The storm complex encompassed nearly the entire I-35 corridor from Atascosa and Wilson counties northward to Travis and Williamson counties. The storms were very slow moving to near stationary producing intense rainfall over the same area for numerous hours. Rainfall reports and Doppler radar estimates showed portions of Atascosa, Bexar, Wilson, Comal, Guadalupe, and Lee County receiving 7 to 12 inches over an 18 hour period. The Guadalupe River in New Braunfels breached its banks forcing residents to evacuate their homes to escape the flood waters. Flash flooding damaged numerous homes and businesses, campgrounds, and forced the closure of multiple roadways. Images of the damage as well as rainfall reports and Doppler radar precipitation estimates can be seen below.



Austin/San Antonio, TX (EWX): 6/9/2010 1-Day Observed Precipitation  
 Valid at 6/9/2010 1200 UTC- Created 6/10/10 17:34 UTC

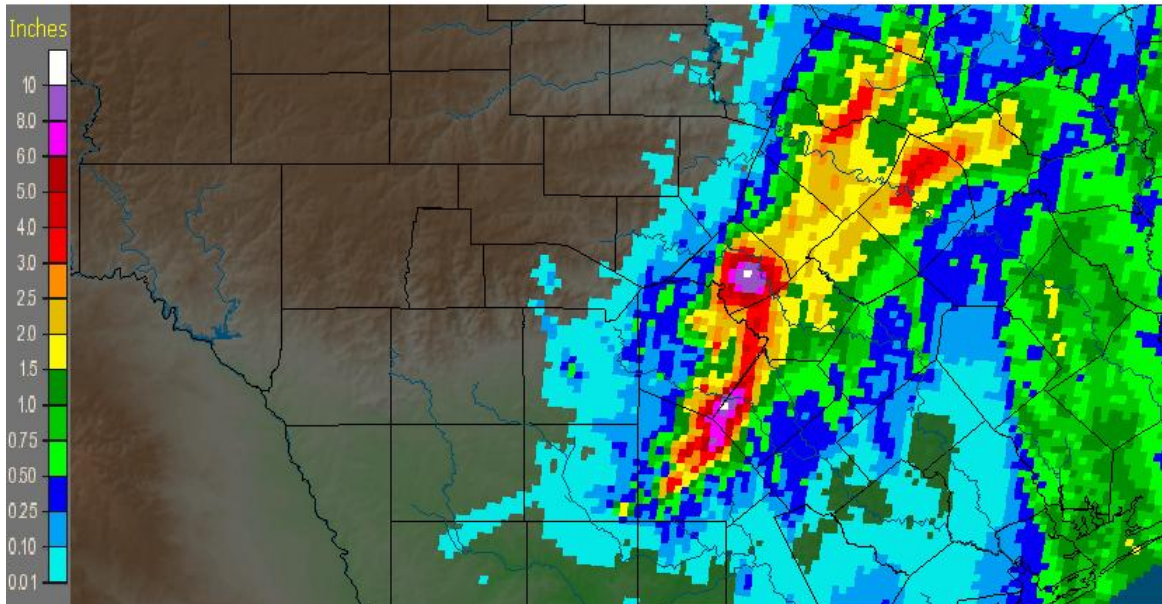


Image 1, Doppler Radar Precipitation Estimates

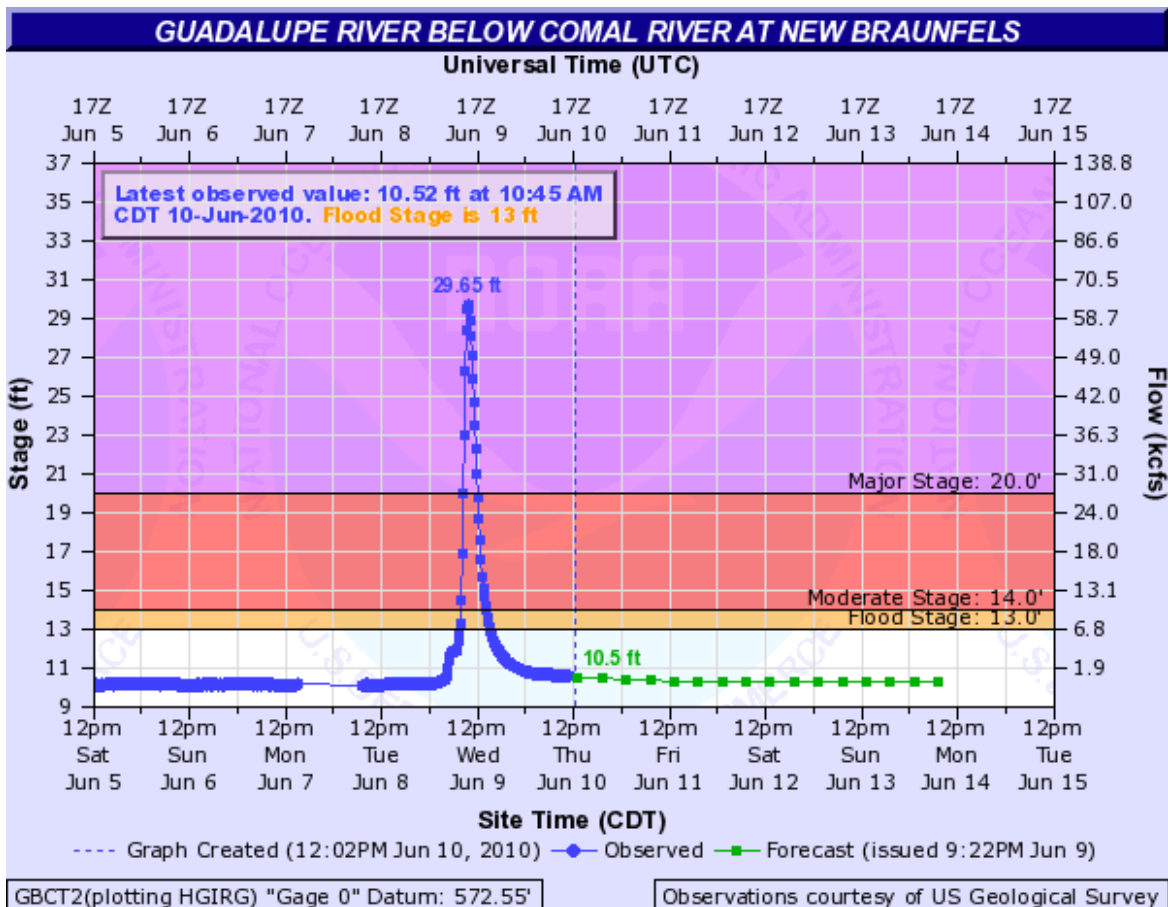


Image 2, River gage showing the peak height and flow Wednesday morning



Photo 1, RV Park underneath I-35 bridge at the Guadalupe River



Photo 2, Building damage near the Gruene River bridge



Photo 3, Tubing company bus pushed down river



Photo 4, Home swept off it's foundation in Gruene



Photo 5, Cars and trailers littered along the Guadalupe River in Gruene



Photo 6, Damage along the banks of the river



Photo 7, Remnants of a campground along River Road downstream from Crossing #1



Photo 8, Bridge Crossing #1, River Road at the Guadalupe River



Photo 9, Campground along River Road between Crossing #1 and #2



Photo 10, Submerged vehicle in the Guadalupe River



Photo 11, Camper trailers swept downstream from a campground



Photo 12, Bandit Golf Course





Photo 13, Water damage on the banks of the river



Photo 14, Debris just below Lake Dunlap



Photo 15, Debris on top of decks below Lake Dunlap



Photo 16, Boat showing the river rise on Treasure Island on Lake McQueeney



Photo 17, Many boats and homes were damaged on Treasure Island



Photo 18, Dam on the Guadalupe at McQueeney