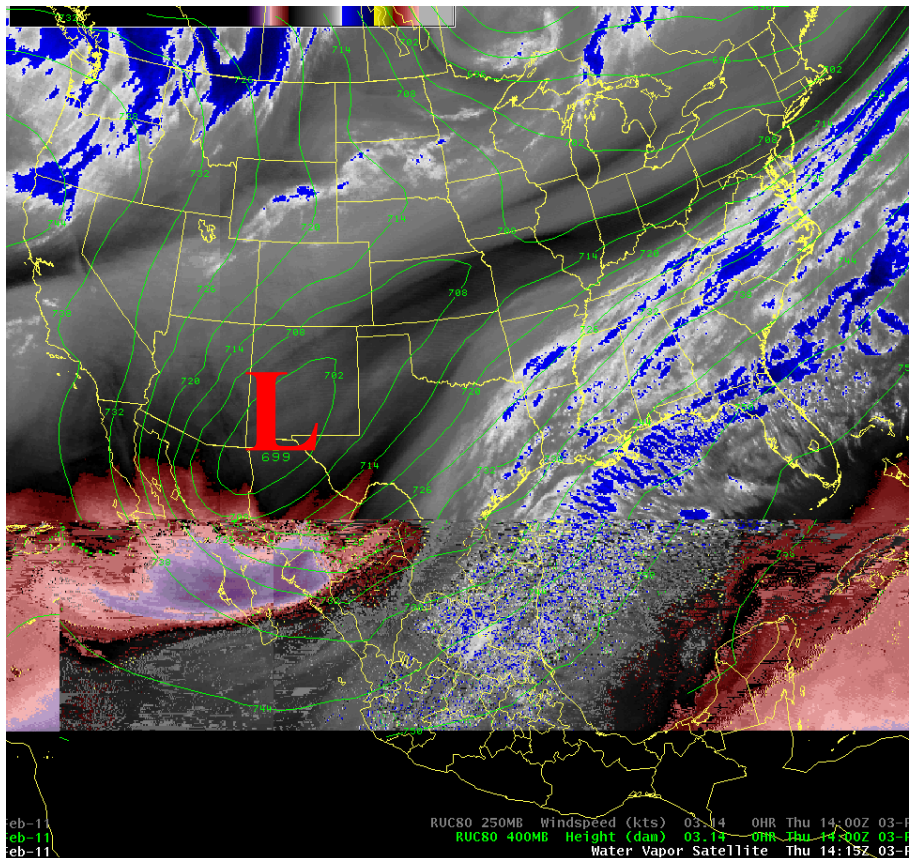


Snow event of February 3-4, 2011

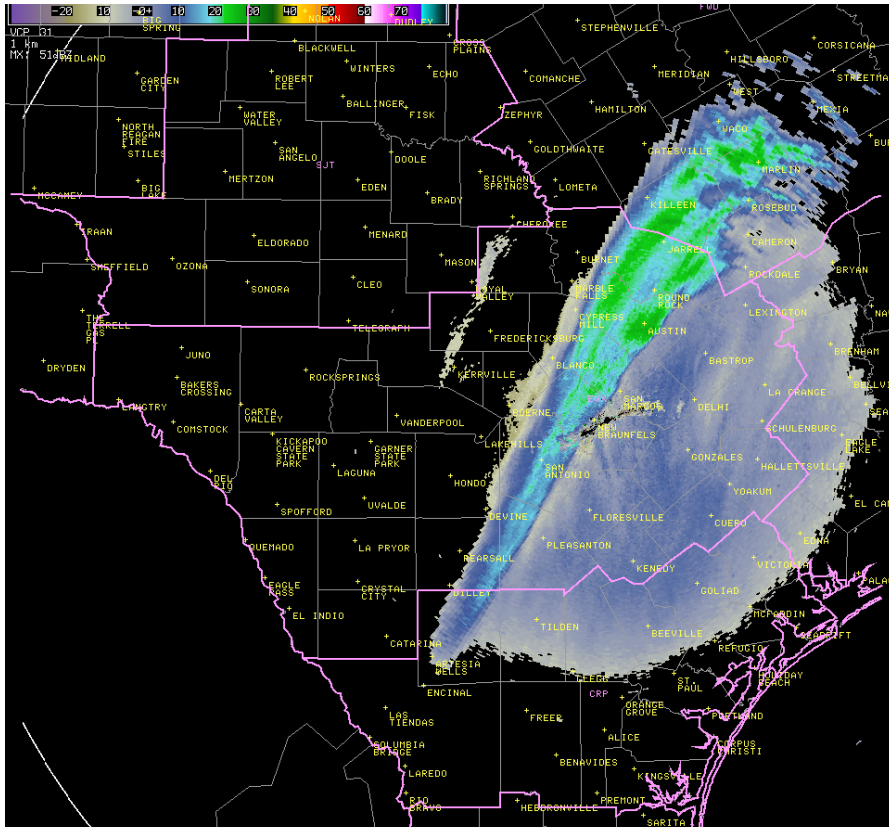
An arctic cold front pushed across South Central Texas early on Tuesday February 1, 2011. The arctic air mass that moved over the area held temperatures below freezing for several days and set the stage for a freezing rain and snow event the evening of February 3 and morning of February 4.

An upper level storm system over New Mexico moved east across Texas during the early morning hours of Friday February 4th. The lift associated with this low, along with the cold arctic air at the surface, produced freezing rain and snow and brought travel to a standstill across much of the area, including the Interstate 35 corridor from Georgetown to San Antonio.



Water vapor satellite imagery from Thursday morning February 3rd. Upper level low pressure area located near El Paso

As the upper level storm approached the area Thursday evening, light drizzle began to fall. This quickly formed a thin layer of ice on all exposed surfaces, making travel very dangerous. The winter precipitation soon turned mostly to light snow along with a few reports of sleet. A band of snow developed over the Hill Country and moved east, bringing moderate snow across the area. The heaviest snow amounts were from 1 to 2 inches, mainly across portions of Travis and Williamson Counties. Lighter amounts, generally less than one inch, fell across the Hill Country, portions of San Antonio, and areas east of Interstate 35.



Snow band as seen from the New Braunfels Doppler Radar KEWX

There were over 500 traffic accidents reported in San Antonio and Austin during the overnight hours. The icy roads forced all of the major highways and Interstates in San Antonio to close during the night. For a time, Interstate 35 was closed from San Marcos to south of San Antonio, a stretch of nearly 100 miles.

By mid morning, the combination of sunshine and temperatures in the 30s helped to melt most of the ice and snowfall.

