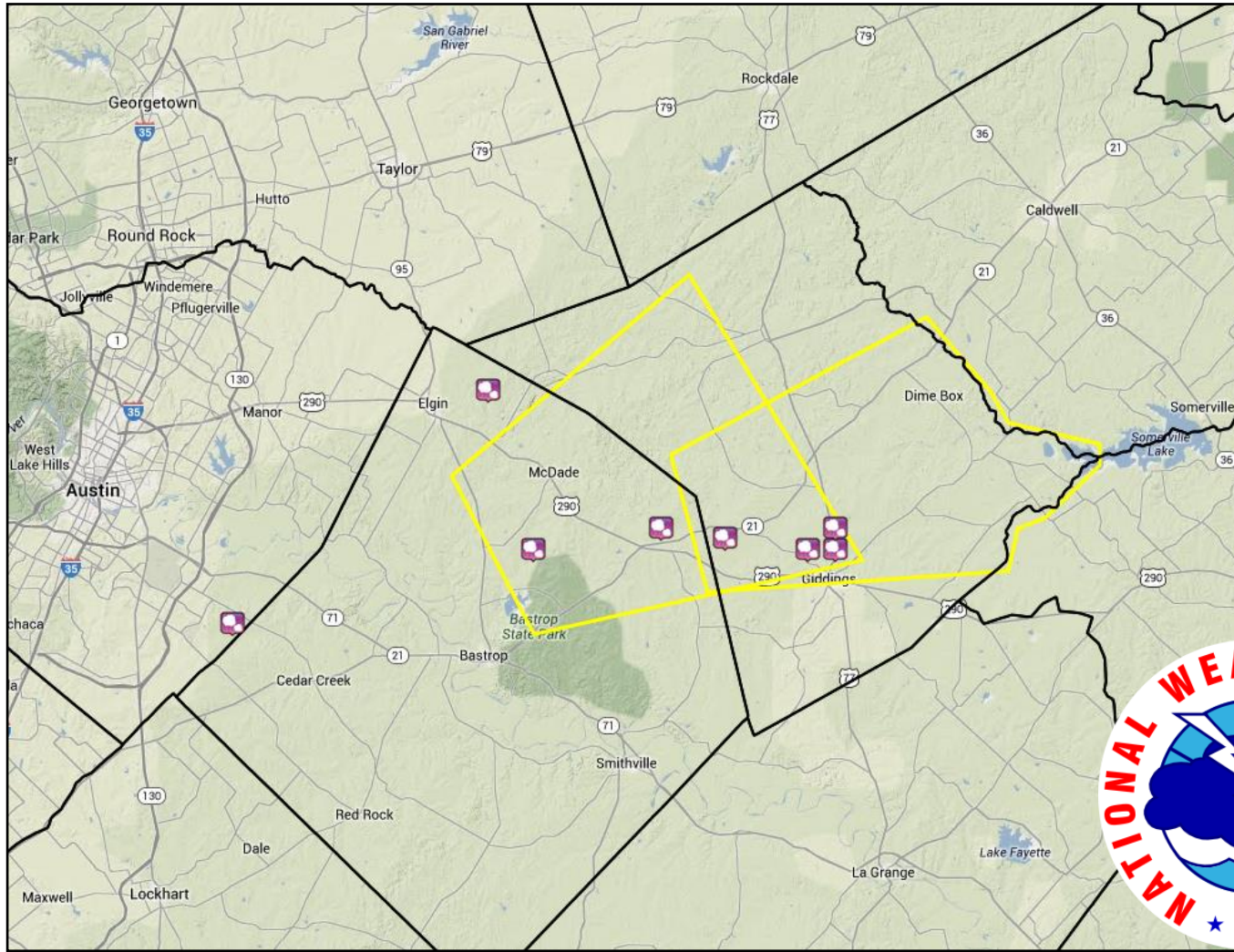
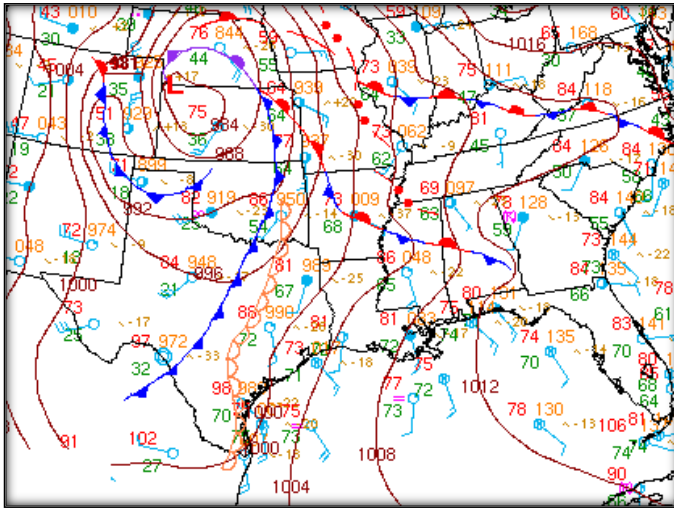


April 27th, 2014 – Eastern Dryline Storm



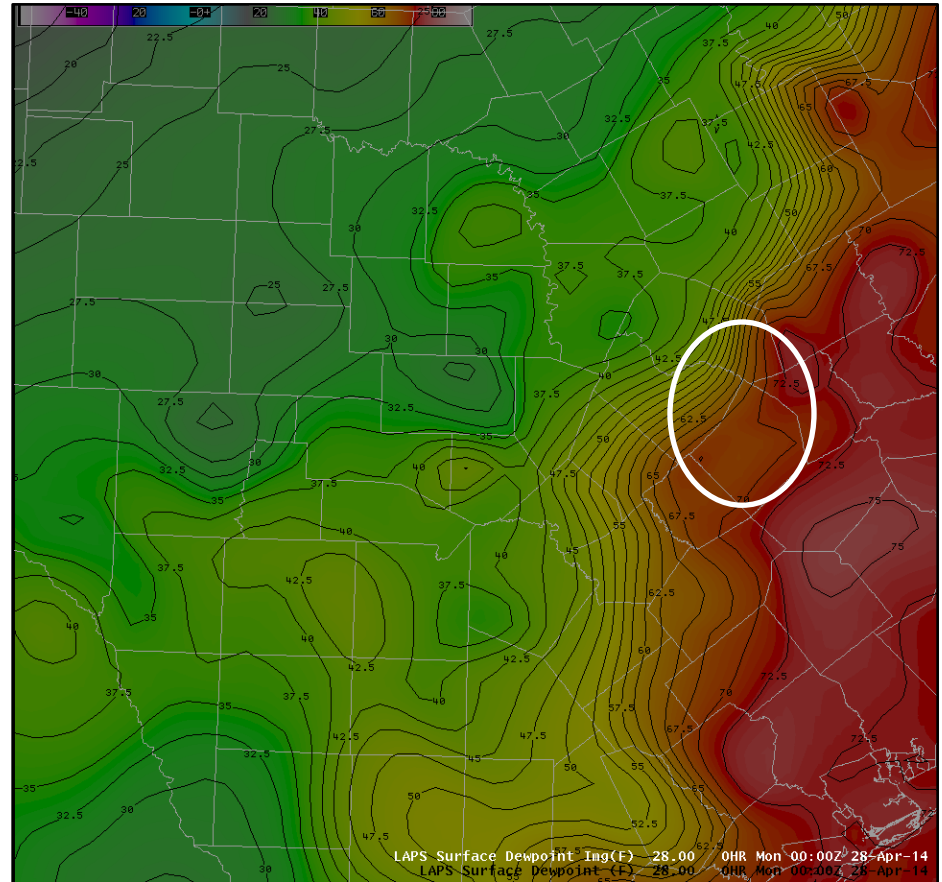
Austin - San Antonio Weather Forecast Office

Synoptic Set Up - Synopsis



4 pm/21Z Weather Prediction Center Surface Analysis

The dryline had pushed through most of the area during the day on Sunday. It slowed just east of I-35. Due to lift provided by the sun heating the earth's surface a few isolated storms fired along the dryline.

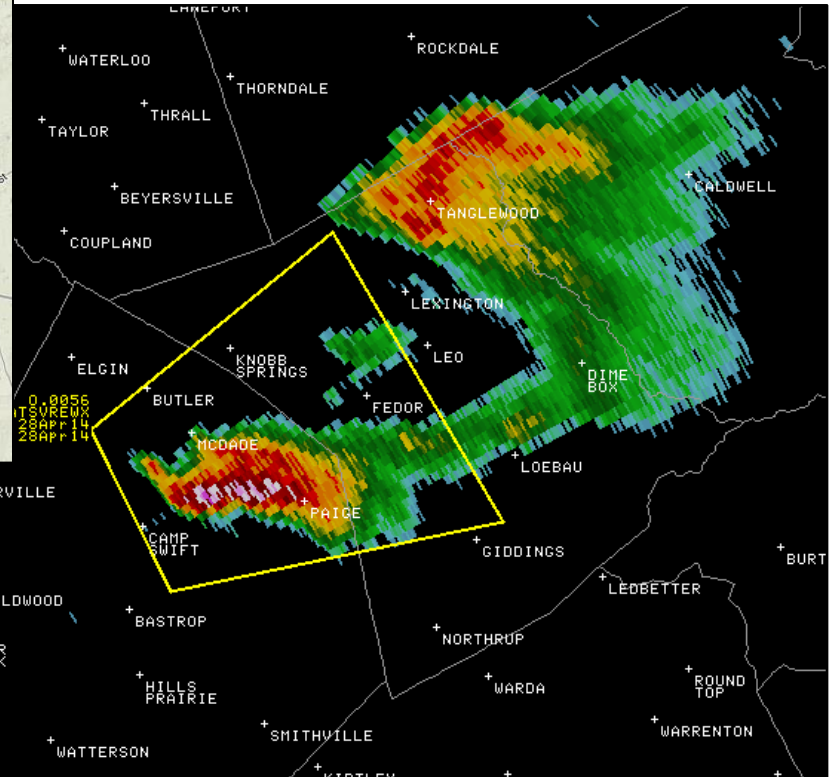
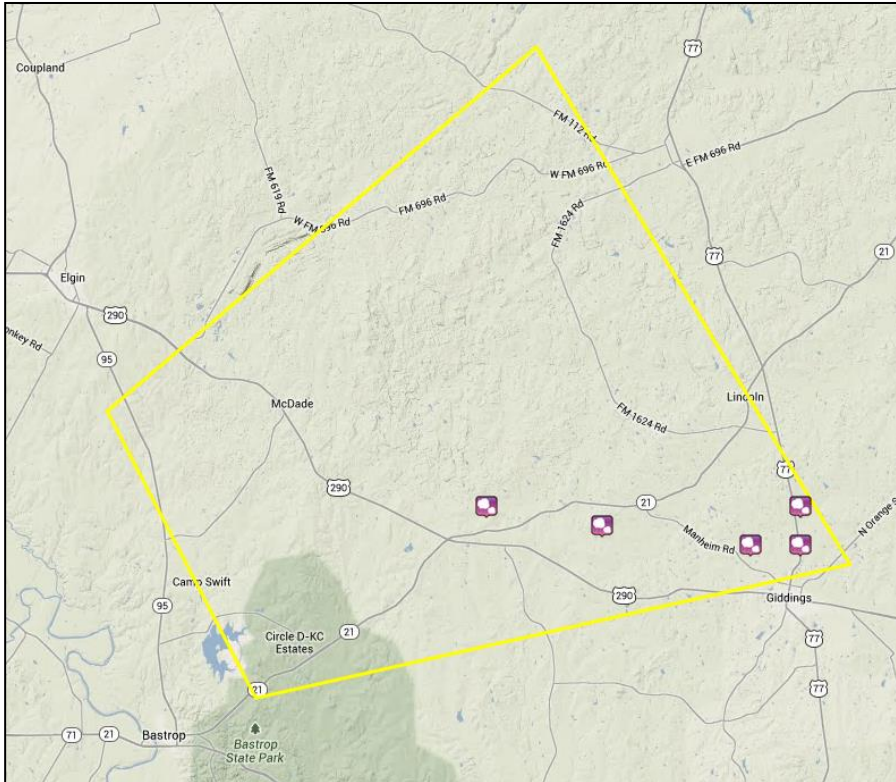


Dew point gradient at 7 pm showing the division between the 70 degree dew points (reds) ahead of the dryline and dew points in the 30s (greens) behind the dryline. Storms formed in eastern Travis and western Bastrop counties.

Severe Thunderstorm Warning #56

Bastrop and Lee Counties

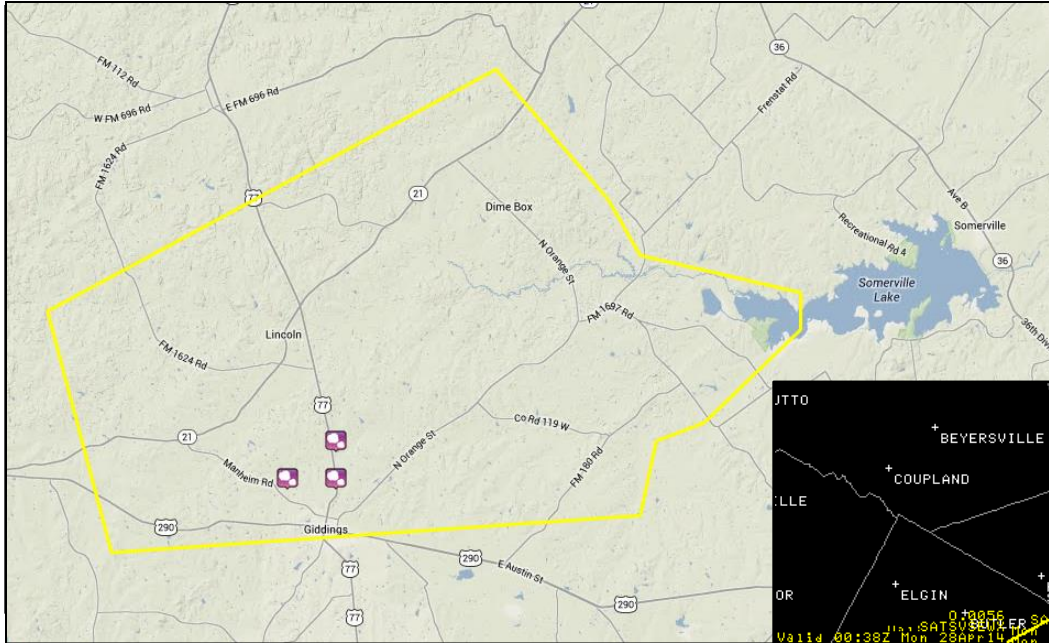
7:23 pm - 8:15 pm



Reports:

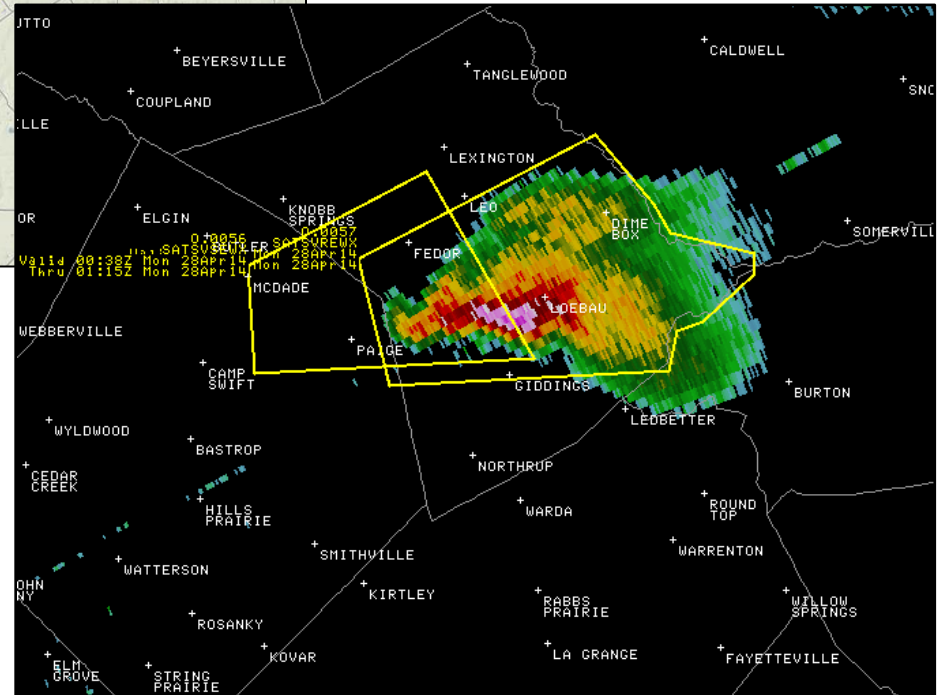
- 7:30 pm...1.00" Hail...1 NNW Paige
- 7:40 pm...0.25" Hail...4 E Paige
- 8:09 pm...2.75" Hail...2 N Giddings
- 8:10 pm...1.25" Hail...3 NW Giddings
- 8:13 pm...3.00" Hail...3 N Giddings

Severe Thunderstorm Warning #57



Lee County

7:49 pm -8:30 pm



Reports:

8:09 pm...2.75" Hail...2 N Giddings*

8:10 pm...1.25" Hail...3NW Giddings*

8:13 pm...3.00" Hail...3 N Giddings*

*Indicates report took place in multiple warnings

All Hail Reports / Pictures

0718 PM HAIL 2 NE CAMP SWIFT 30.21N 97.26W
04/27/2014 E1.00 INCH BASTROP TX TRAINED SPOTTER

0730 PM HAIL 1 NNW PAIGE 30.23N 97.12W
04/27/2014 E1.00 INCH BASTROP TX TRAINED SPOTTER

0740 PM HAIL 4 E PAIGE 30.22N 97.05W
04/27/2014 E0.25 INCH LEE TX TRAINED SPOTTER

0809 PM HAIL 2 N GIDDINGS 30.21N 96.93W
04/27/2014 E2.75 INCH LEE TX LAW ENFORCEMENT

0810 PM HAIL 3 NW GIDDINGS 30.21N 96.96W
04/27/2014 E1.25 INCH LEE TX TRAINED SPOTTER

0813 PM HAIL 3 N GIDDINGS 30.23N 96.93W
04/27/2014 M3.00 INCH LEE TX PUBLIC



Quarter Size Hail from Paige, TX around 7:30 pm (Photo Credit: Bastrop County OEM)



Several Large hail. One measured at 3 inches in diameter. Hail occurred around 8:15 pm north of Giddings, TX (Photo Credit: Tee D.)

Bastrop/Lee County Cumulonimbus



View From New Braunfels, TX (Photo Credit: Cullen B. via Facebook)



View From Kyle, TX (Photo Credit: Troy W. via Facebook)



View From Round Rock, TX (Photo Credit: James G. via Facebook)

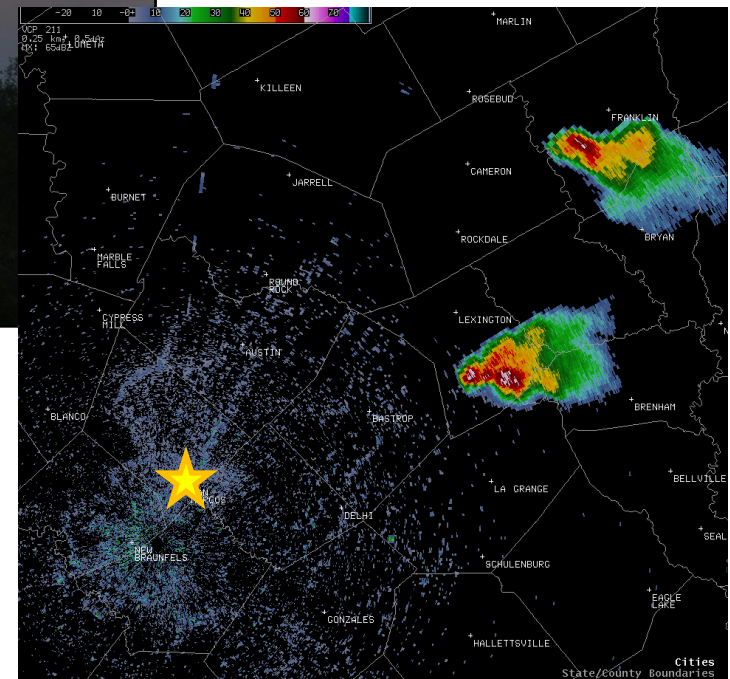


View from Bastrop, TX (Photo Credit: Lee T.)

Cloud and Radar Comparison

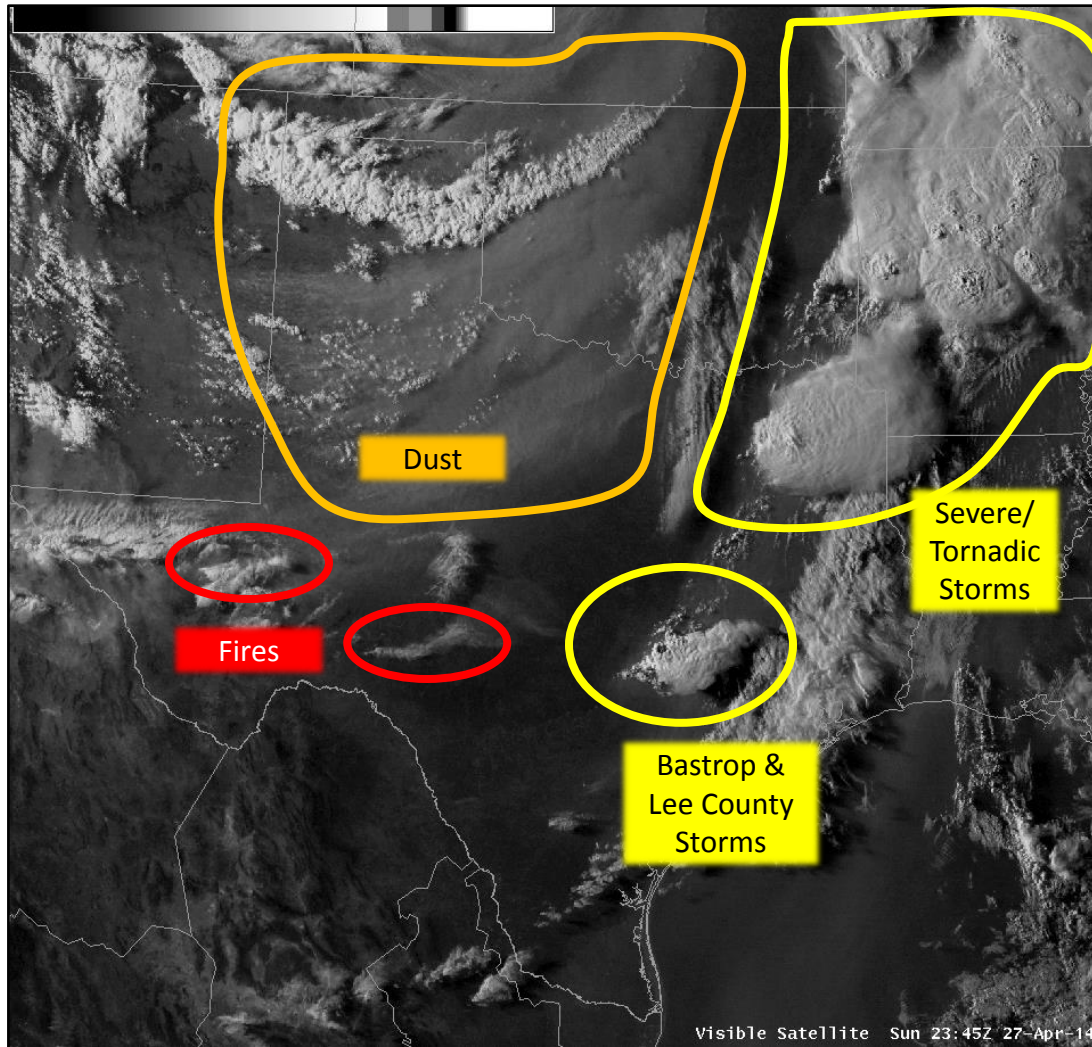


Taken from San Marcos at 8:06 pm (Photo Credit: Paul Y., NWS)

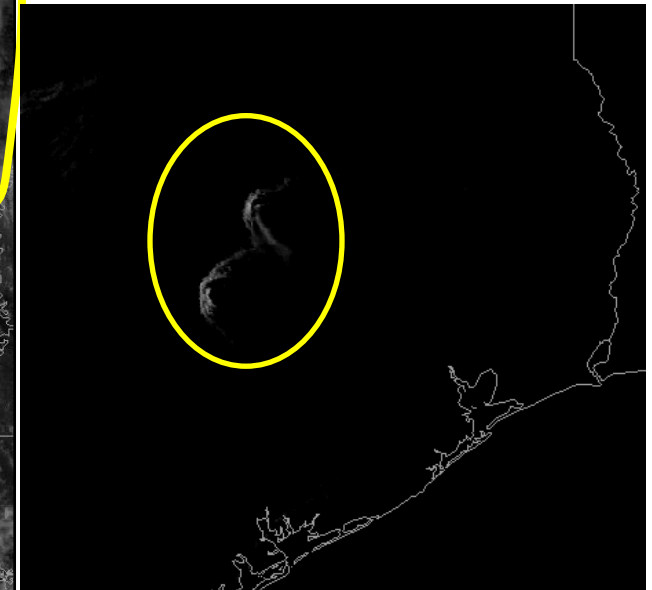


Radar at 8:07 pm. Picture taken at yellow star. Storm was about 60 miles from where the image was taken.

Visible Satellite Image



Visible Satellite Image from 6:45 pm showing several different features



Visible Satellite of Central and East Texas at 7:55pm. While there is not enough light left at the surface for the visible satellite to "see", the overshooting tops of the two storms in Central Texas can be seen in the yellow circle above. These storm tops reached the altitudes between 50 and 55 thousand feet.

Social Media / Records



Bastrop Storm from an Airplane (Photo Credit: Lynn Y. and Alisa W.)



Austin/San Antonio, TX
Weather Forecast Office
weather.gov/ewx



US National Weather
Service Austin-San
Antonio, Texas



@NWSSanAntonio

Record High Temperatures for 4/27/2014:

A record high temperature of 99 degrees was set at San Antonio. This breaks the old record of 96 set in 1899.

A record high temperature of 98 degrees was set at Del Rio. This ties the old record of 98 set in 2002.

A record high temperature of 96 degrees was set at Austin Camp Mabry. This breaks the old record of 95 set in 1971.