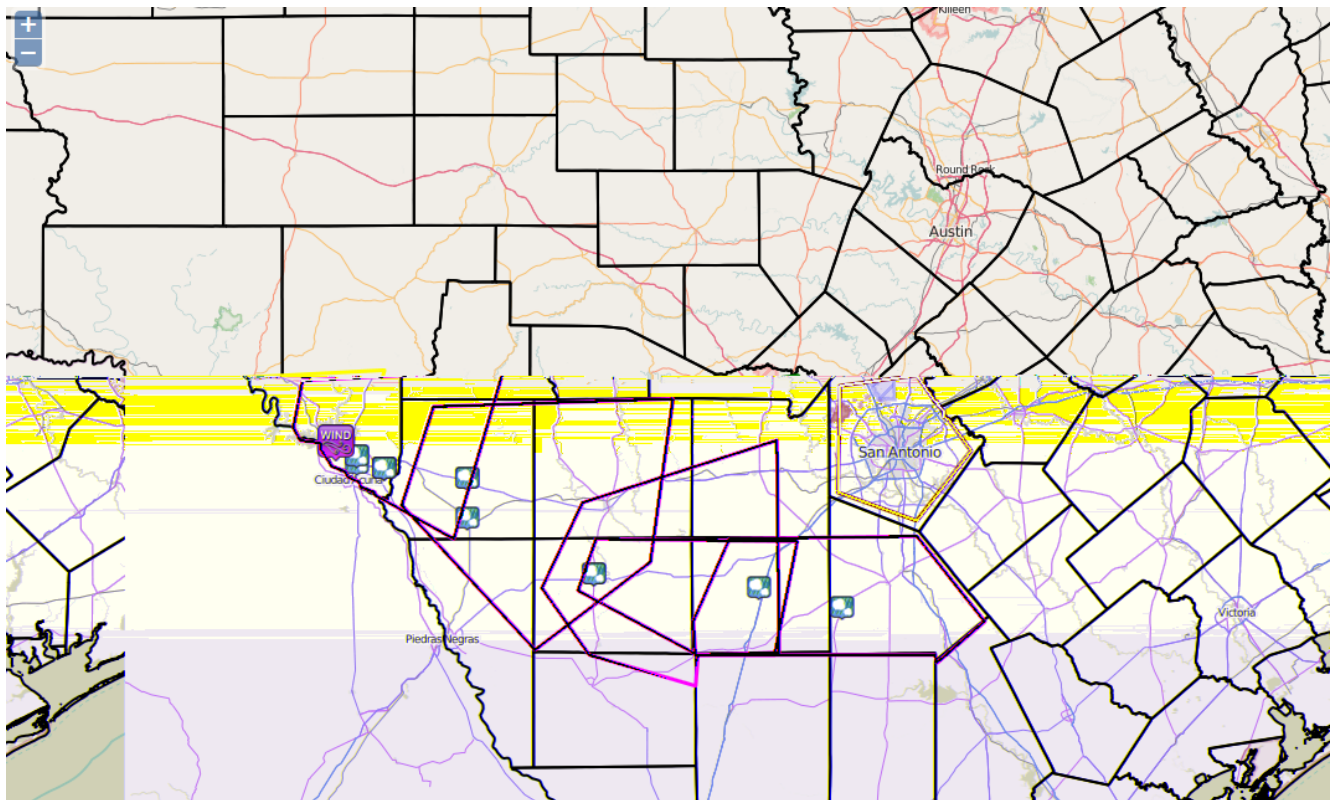




Austin/San Antonio Weather Forecast Office WEATHER EVENT SUMMARY

Severe Weather February 2016

22 -23 February March 2016



A total of 5 Severe Thunderstorm Warnings were issued from late evening February 22 through the early morning hours on February 23. A more detailed summary of severe weather reports can be found [here](#) or by clicking on the map above.

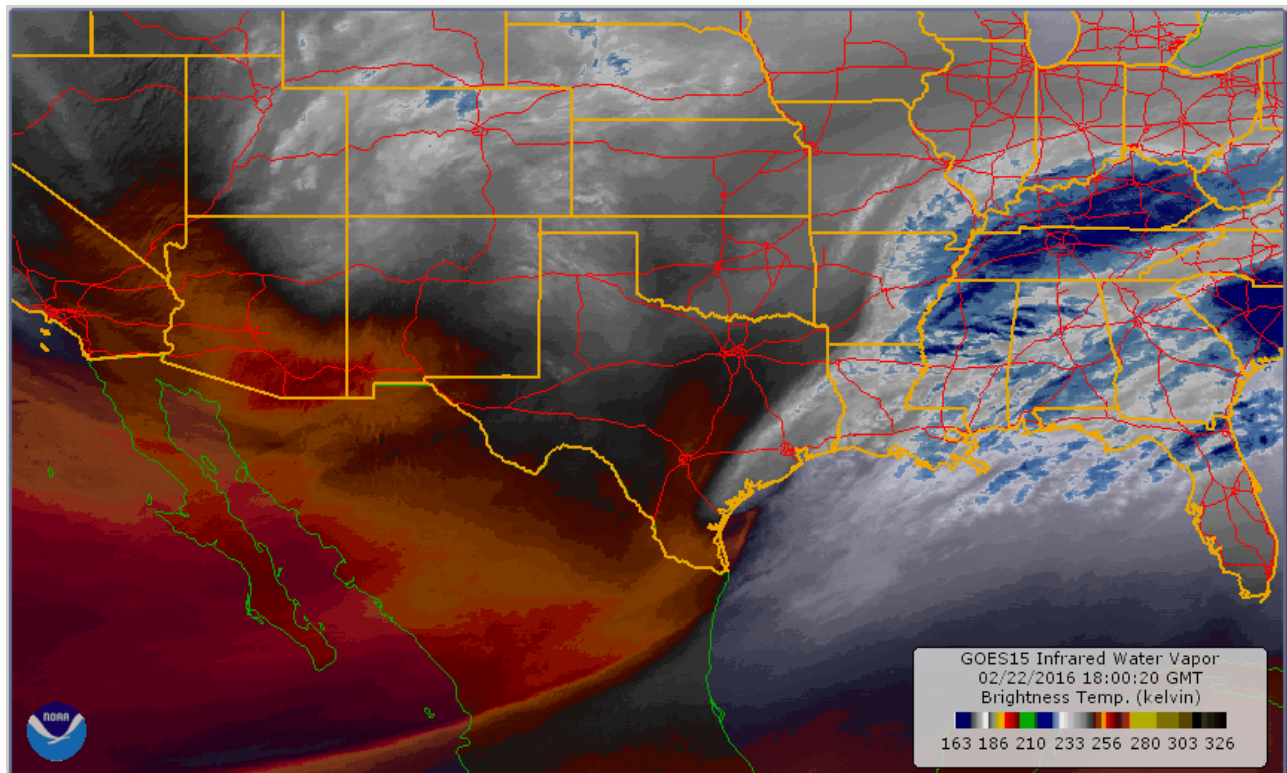
Severe Weather February 2016

22 - 23 FEBRUARY 2016

EVENT SUMMARY

An active weather pattern took shape on February 23 and resulted in severe thunderstorms with large hail and damaging winds across portions of south central Texas. A strong upper level trough combined with a cold front and plenty of low level moisture combined to produce thunderstorm development beginning late in the evening on February 22 across southwest Texas. Storms quickly became organized as they moved into south central Texas, with the strongest storm producing wind gusts near 60 MPH and golf ball size hail from near Del Rio to Brackettville along Highway 90. The particular cell also resulted in windows being broken in homes and cars along with widespread power outages. As a result of the power outages, the Del Rio/San Felipe Independent School District cancelled classes on February 23.

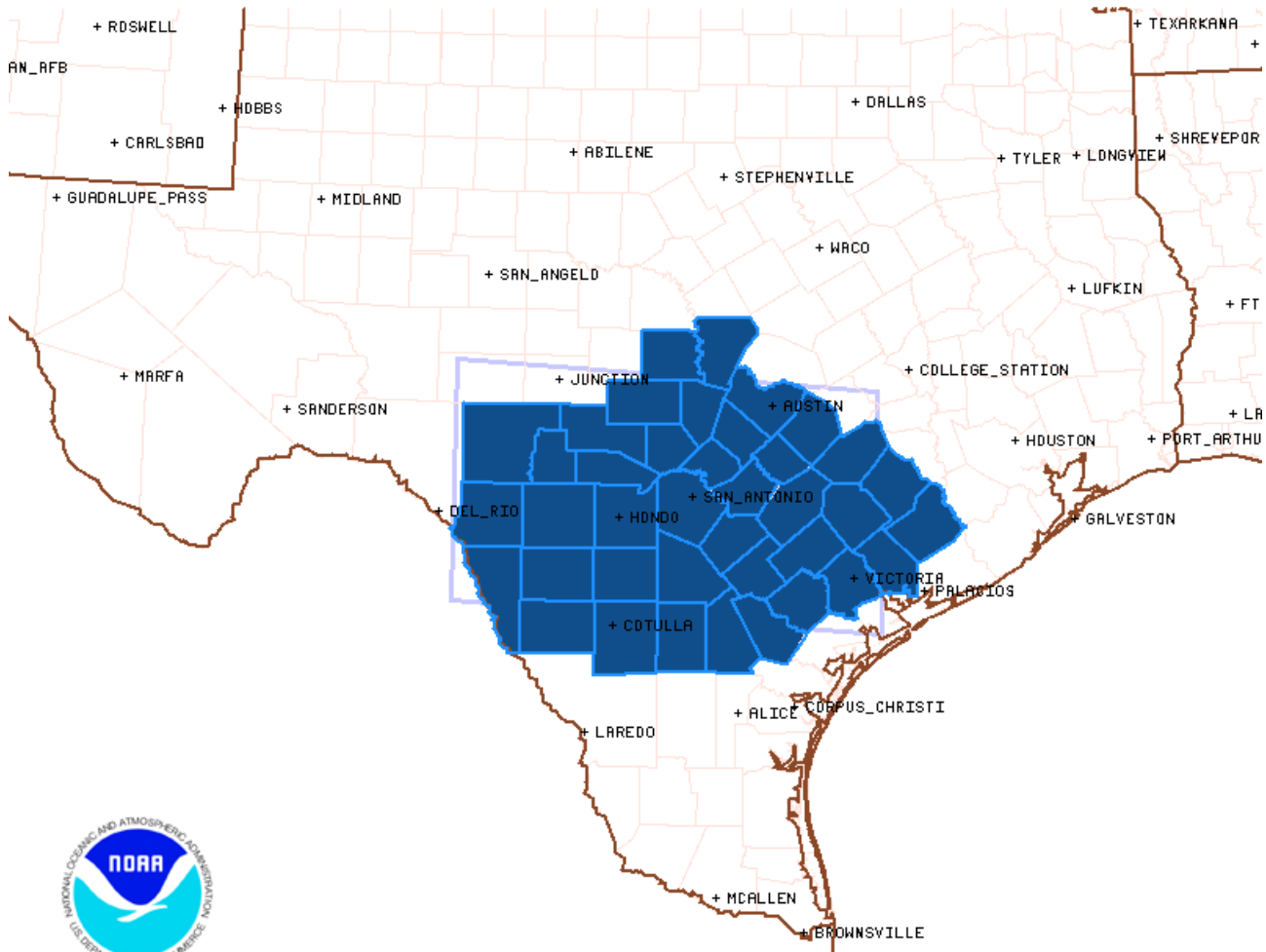
Satellite



This satellite loop begins at Noon CST on February 22 and continues until 9 AM CST on February 23. A strong upper level disturbance moved out of the southern Rockies into Texas during this time period. This upper disturbance helped to initiate thunderstorm development over western Texas late on the 22nd. Thunderstorms continued to develop across south central Texas into the early morning hours on the 23rd.



Severe Weather Watches



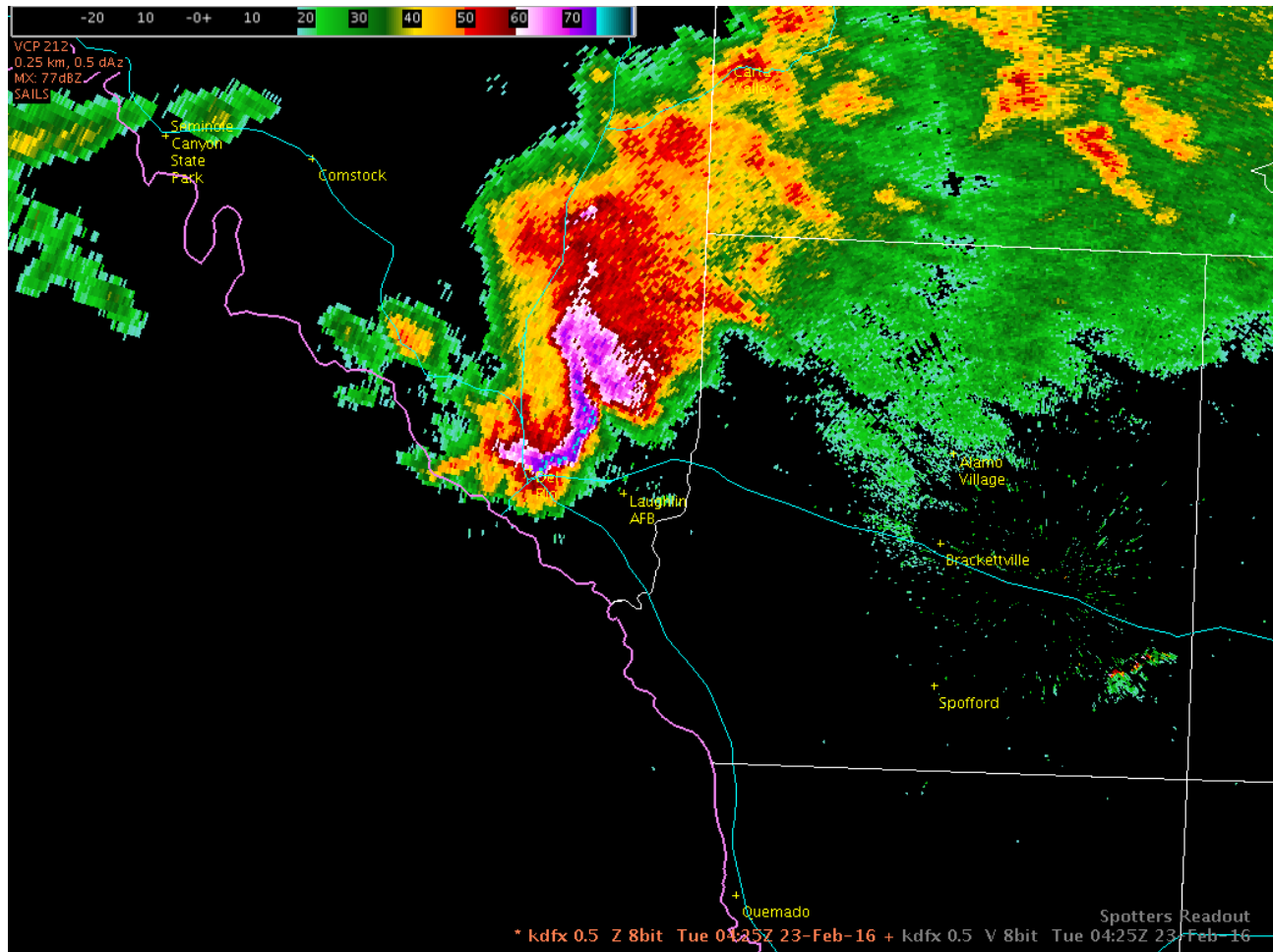
Severe Thunderstorm Watch # 18 - Valid from 1010 PM until 400 AM CST

NOAA/NWS/Storm Prediction Center

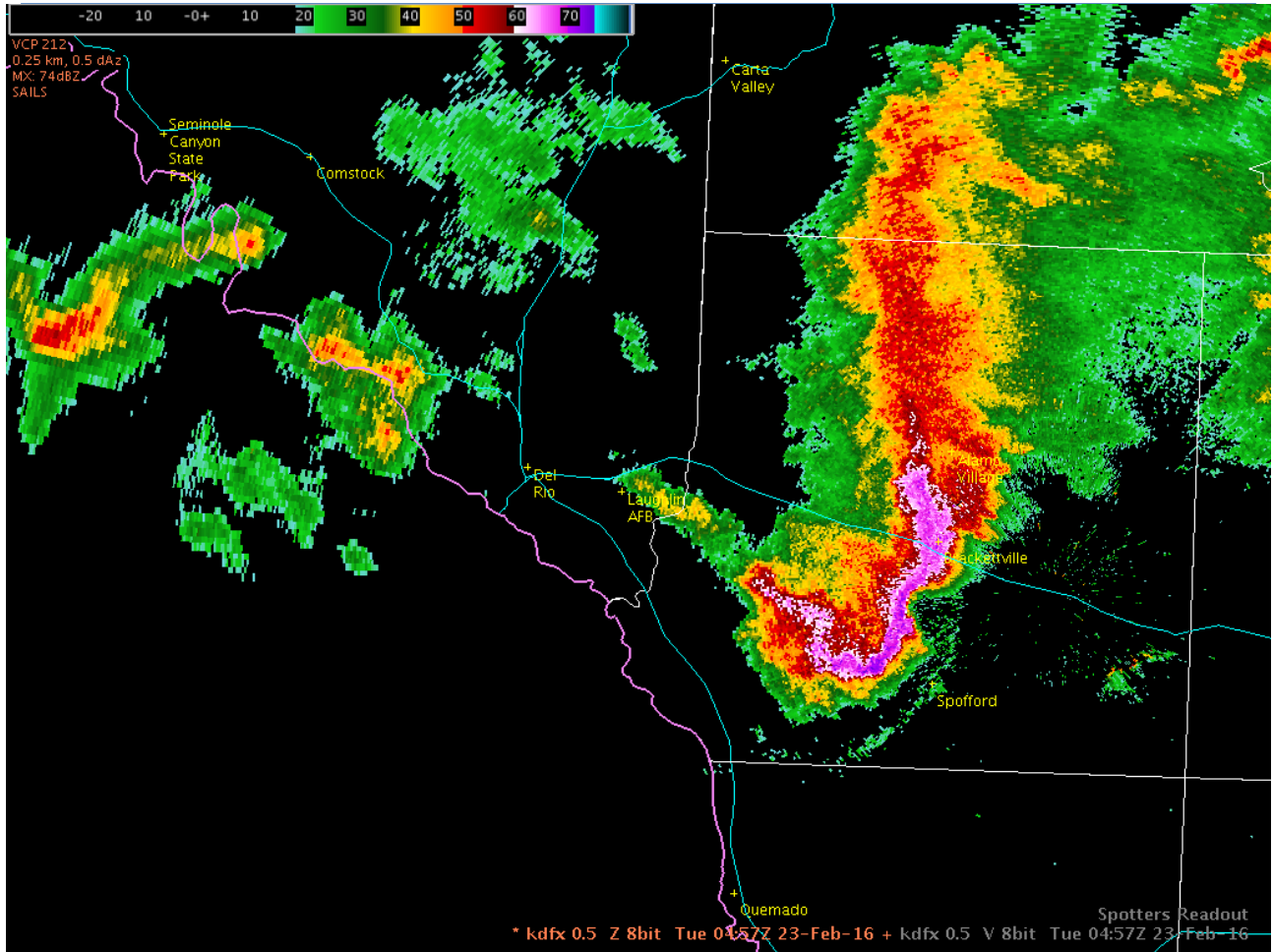
Updated: 20160223/0419 UTC

In anticipation of the severe weather potential, a Severe Thunderstorm Watch was issued for most of south central Texas.

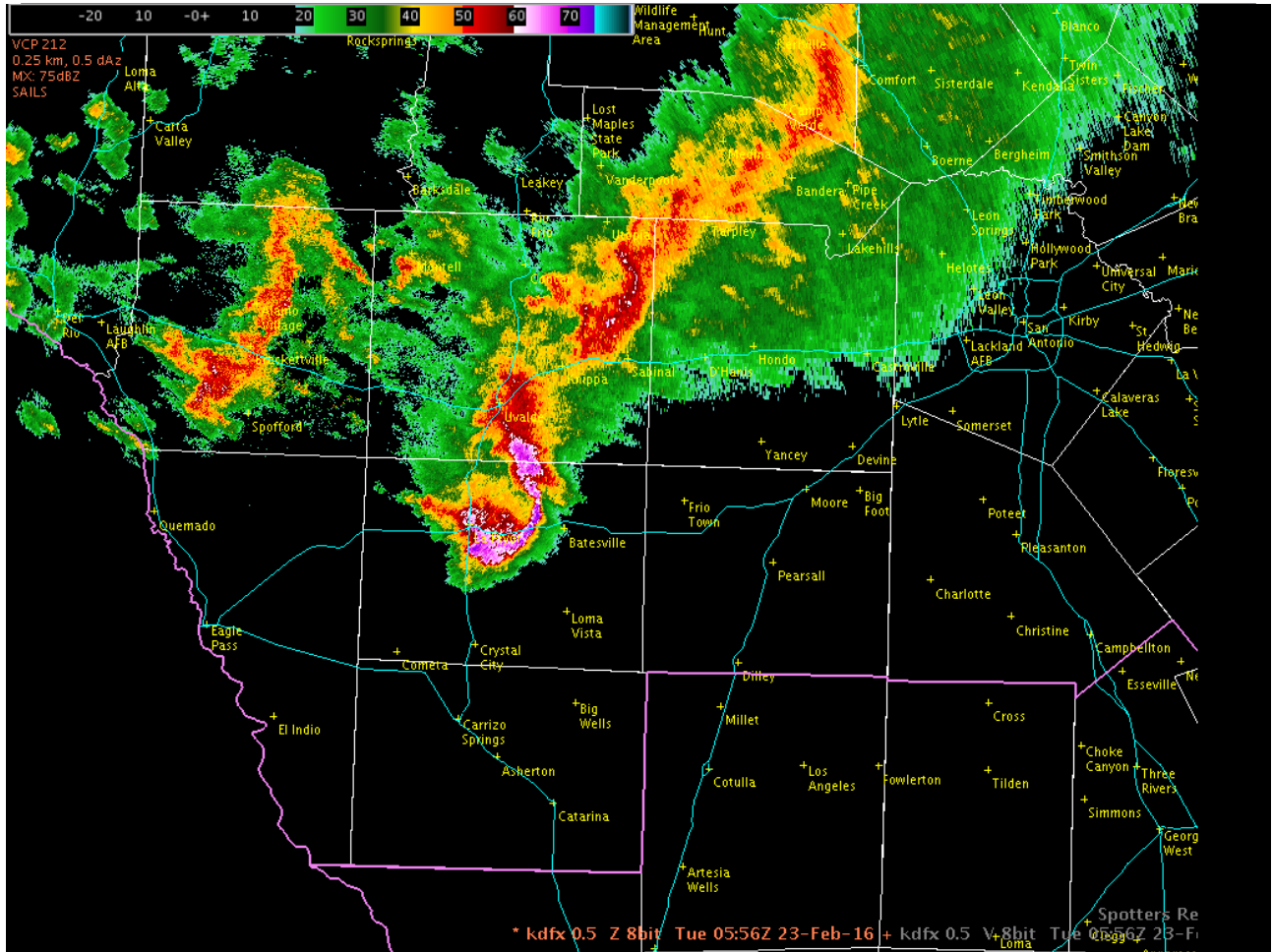
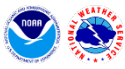
Radar Imagery



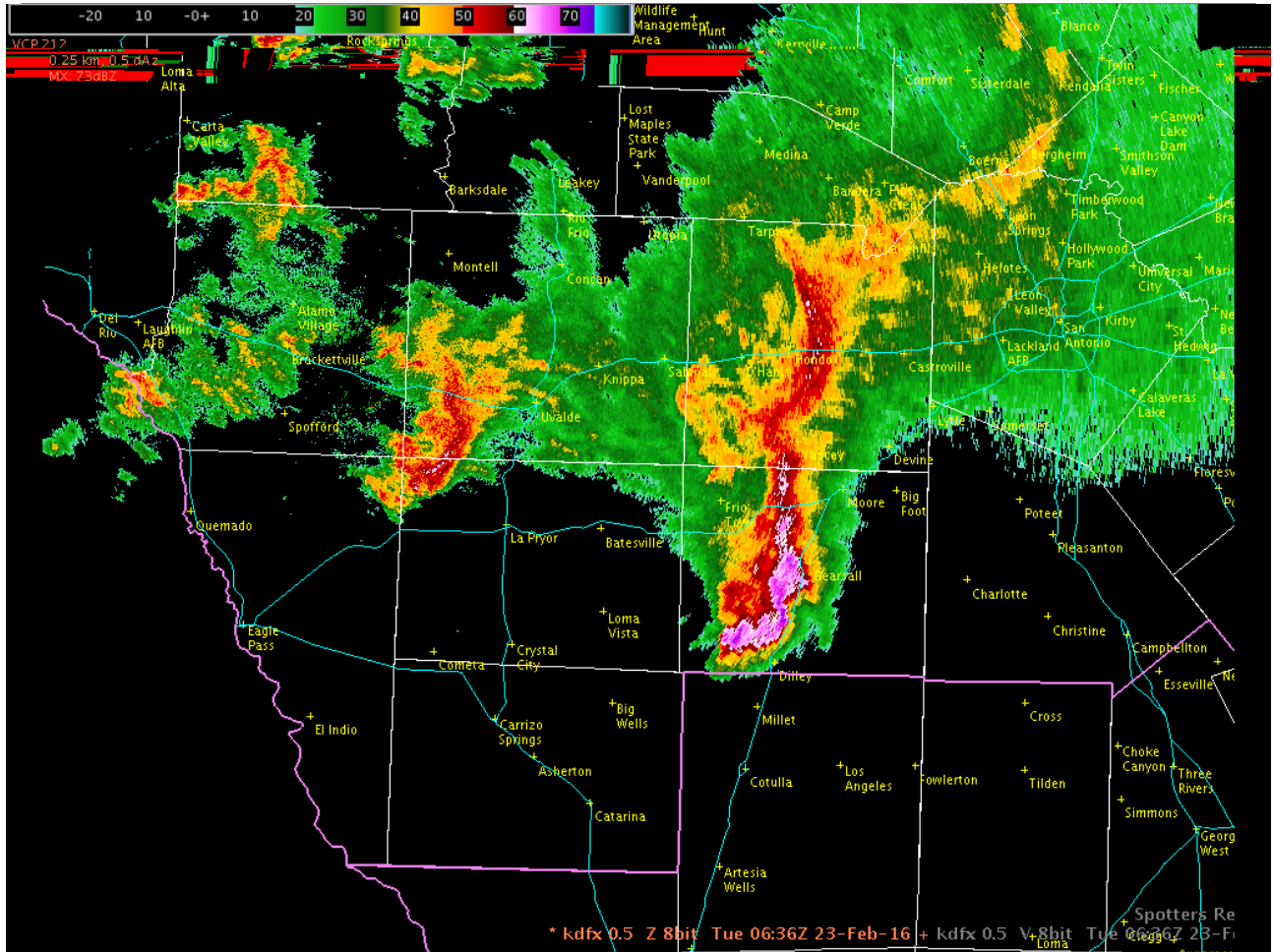
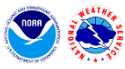
This image is from the Laughlin Air Force Base WSR-88D weather radar located near Brackettville. In this image, a severe thunderstorm is shown moving into the Del Rio area. At the time of this image, 10:25 PM, ping pong ball size hail was falling 2 miles north of Del Rio. Click [here](#) for a radar loop showing this severe thunderstorm passing through the Del Rio area.



A severe thunderstorm continues heading toward Brackettville. This radar image was taken at 10:57 PM. A few minutes after this image, quarter to golf ball size hail was falling in Brackettville.

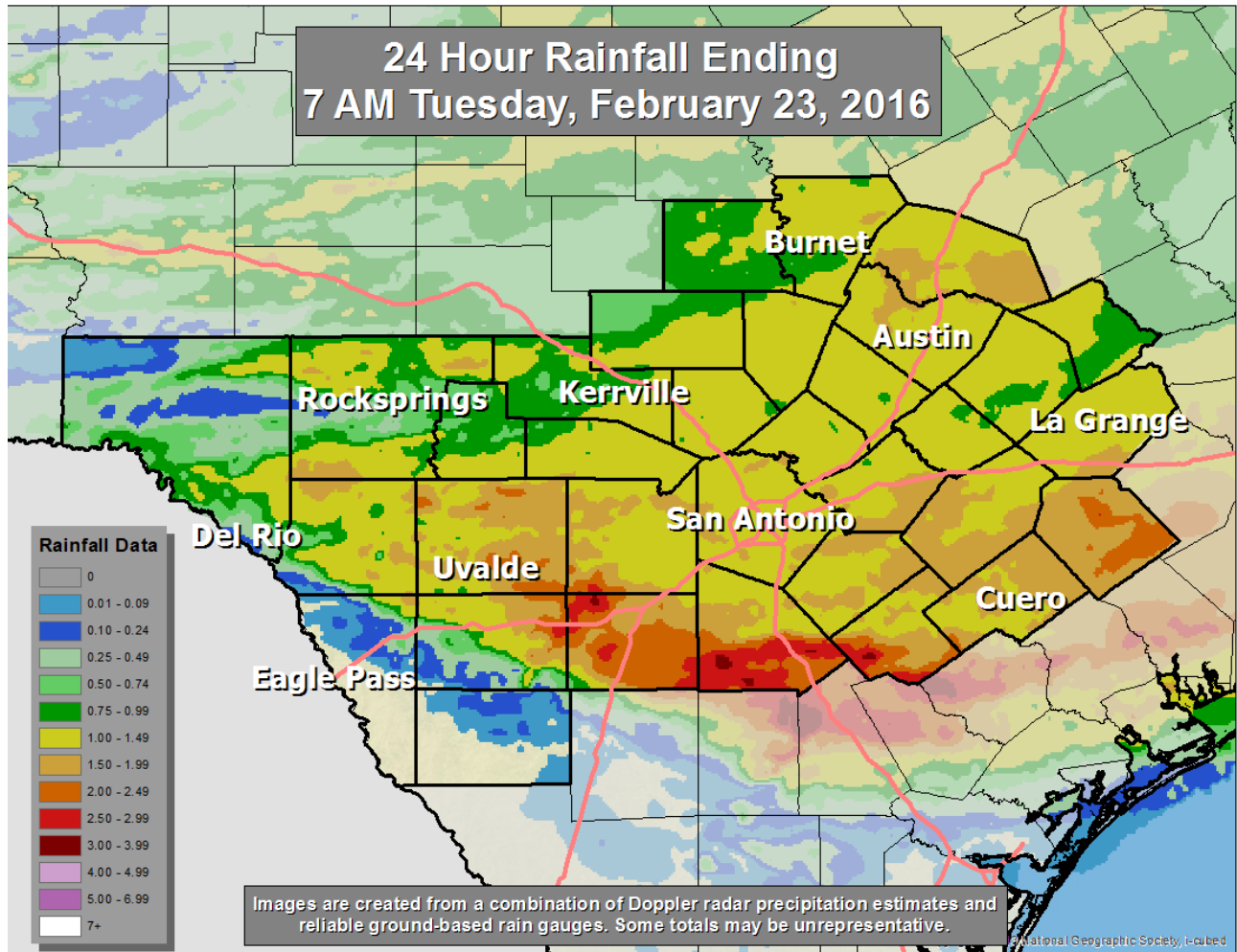


Thunderstorm activity continued to trek southeastward into the U.S. Highway 57 corridor. At the time of this image, 11:56 PM, hail up to the size of quarters was falling in the city of La Pryor.

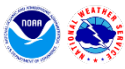


At 12:36 AM, February 23, hail up to the size of quarters was falling near Pearsall.

Precipitation Summary



The vast majority of south central Texas saw some much needed rainfall on February 22 and 23. Click [here](#) for precipitation totals sorted by county.



Rainfall Totals

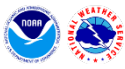
PUBLIC INFORMATION STATEMENT
NATIONAL WEATHER SERVICE AUSTIN/SAN ANTONIO TX
951 PM CST TUE FEB 23 2016

...TOP RAINFALL REPORTS BY COUNTY OVER THE PAST 48 HOURS...

LOCATION	AMOUNT	TIME/DATE	LAT/LON
...ATASCOSA COUNTY...			
2 E LYTLE	1.95 IN	0725 PM 02/23	29.23N/98.76W
6 N POTEET	1.71 IN	0557 PM 02/23	29.14N/98.57W
...BANDERA COUNTY...			
3 NE VANDERPOOL	1.24 IN	0746 PM 02/23	29.77N/99.50W
MEDINA RIVER AT PATTERSON RD	1.08 IN	0715 PM 02/23	29.79N/99.25W
5 E VANDERPOOL	0.90 IN	0626 PM 02/23	29.75N/99.46W
...BASTROP COUNTY...			
3 WSW CIRCLE D-KC ESTATE	2.45 IN	0810 PM 02/23	30.14N/97.27W
CEDAR CREEK NEAR BASTROP	2.21 IN	0500 PM 02/23	30.08N/97.39W
1 WNW SMITHVILLE	1.96 IN	0840 PM 02/23	30.02N/97.17W
1 WSW BASTROP	1.81 IN	0800 PM 02/23	30.10N/97.32W
6 NNW CAMP SWIFT	1.81 IN	0710 PM 02/23	30.27N/97.33W
CEDAR CREEK BELOW BASTROP	1.66 IN	0540 PM 02/23	30.04N/97.31W
SMITHVILLE	1.62 IN	0810 PM 02/23	30.01N/97.16W
1 WSW ROSANKY	1.61 IN	0710 PM 02/23	29.93N/97.31W
2 ESE WYLDWOOD	1.42 IN	0613 PM 02/23	30.11N/97.43W
2 NE ELGIN	1.24 IN	0737 PM 02/23	30.38N/97.35W
7 NNE WYLDWOOD	1.19 IN	0825 PM 02/23	30.23N/97.43W
3 W CEDAR CREEK	1.11 IN	0810 PM 02/23	30.08N/97.55W
2 SSE BASTROP	1.11 IN	0812 PM 02/23	30.08N/97.29W
...BEXAR COUNTY...			
3 E CHINA GROVE	2.34 IN	0714 PM 02/23	29.39N/98.28W
3 SSE SAN ANTONIO	2.28 IN	0656 PM 02/23	29.41N/98.50W
MITCHELL ST @ SAN ANTONIO RV	1.68 IN	0430 PM 02/23	29.39N/98.49W
SAN ANTONIO RIVER AT SOUTH L	1.63 IN	0815 PM 02/23	29.32N/98.45W
SAN ANTONIO INTL ARPT	1.54 IN	0815 PM 02/23	29.53N/98.47W
...BLANCO COUNTY...			
1 NE ROUND MOUNTAIN	1.53 IN	0655 PM 02/23	30.45N/98.34W
9 WSW ROUND MOUNTAIN	1.46 IN	0655 PM 02/23	30.40N/98.49W
3 S ROUND MOUNTAIN	1.36 IN	0740 PM 02/23	30.39N/98.36W
4 ESE CYPRESS MILL	1.34 IN	0725 PM 02/23	30.38N/98.19W
3 WSW PEDERNALES FALLS STATE	1.31 IN	0555 PM 02/23	30.28N/98.30W
...BURNET COUNTY...			
BURNET	1.39 IN	0710 PM 02/23	30.76N/98.24W
6 ENE BUCHANAN DAM	1.36 IN	0655 PM 02/23	30.84N/98.36W
1 NE SPICEWOOD	1.35 IN	0726 PM 02/23	30.50N/98.15W
10 WSW LAMPASAS	1.30 IN	0540 PM 02/23	30.98N/98.33W
9 NNE TOW	1.25 IN	0725 PM 02/23	31.01N/98.40W
...CALDWELL COUNTY...			
7 NE LOCKHART	1.87 IN	0540 PM 02/23	29.94N/97.59W
4 NNW LULING	1.57 IN	0728 PM 02/23	29.74N/97.68W
9 SSW CEDAR CREEK	1.37 IN	0723 PM 02/23	29.95N/97.54W
LULING	1.30 IN	0818 PM 02/23	29.68N/97.65W



...COMAL COUNTY...					
GARDEN RIDGE	1.27	IN	0429	PM 02/23	29.63N/98.30W
1 SSE FISCHER	1.16	IN	0625	PM 02/23	29.94N/98.26W
2 S NEW BRAUNFELS	1.11	IN	0800	PM 02/23	29.67N/98.12W
4 ENE BULVERDE	1.06	IN	0841	PM 02/23	29.76N/98.39W
3 E CANYON LAKE DAM	0.47	IN	0815	PM 02/23	29.87N/98.20W
...DEWITT COUNTY...					
2 W CUERO	1.10	IN	0630	PM 02/23	29.09N/97.33W
...EDWARDS COUNTY...					
NUECES RIVER NEAR BARKSDALE	1.21	IN	0500	PM 02/23	29.72N/100.04W
5 SSW TELEGRAPH	0.78	IN	0500	PM 02/23	30.26N/99.94W
12 NE ROCKSPRINGS	0.78	IN	0725	PM 02/23	30.14N/100.06W
...FAYETTE COUNTY...					
CARMINE	3.75	IN	0655	PM 02/23	30.14N/96.69W
5 W FAYETTEVILLE	2.78	IN	0655	PM 02/23	29.92N/96.75W
5 SE CISTERN	2.41	IN	0755	PM 02/23	29.78N/97.16W
5 NE LA GRANGE	2.12	IN	0555	PM 02/23	29.95N/96.82W
2 SW CARMINE	1.92	IN	0701	PM 02/23	30.12N/96.72W
...GILLESPIE COUNTY...					
5 N FREDERICKSBURG	1.26	IN	0640	PM 02/23	30.34N/98.87W
9 NNE INGRAM	1.23	IN	0800	PM 02/23	30.19N/99.18W
6 SSW WILLOW CITY	1.23	IN	0800	PM 02/23	30.33N/98.75W
LBJ STATE PARK	1.20	IN	0725	PM 02/23	30.24N/98.63W
8 WNW BANKERSMITH	1.19	IN	0800	PM 02/23	30.17N/98.95W
...GONZALES COUNTY...					
5 ESE GONZALES	2.48	IN	0743	PM 02/23	29.49N/97.36W
9 SW GONZALES	2.00	IN	0700	PM 02/23	29.42N/97.57W
...GUADALUPE COUNTY...					
8 ENE LA VERNIA	3.54	IN	0604	PM 02/23	29.38N/97.98W
CIBOLO CREEK NEAR ST HEDWIG	3.13	IN	0715	PM 02/23	29.50N/98.19W
NEW BERLIN	2.62	IN	0826	PM 02/23	29.46N/98.10W
3 S MCQUEENEY	2.19	IN	0507	PM 02/23	29.55N/98.04W
3 SSE SEGUIN	1.89	IN	0659	PM 02/23	29.54N/97.94W
...HAYS COUNTY...					
2 WNW HAYS	1.49	IN	0640	PM 02/23	30.14N/97.90W
ONION CREEK AT BUDA	1.36	IN	0500	PM 02/23	30.09N/97.85W
HENLY	1.26	IN	0555	PM 02/23	30.20N/98.22W
1 SE WIMBERLEY	1.22	IN	0830	PM 02/23	29.98N/98.09W
4 WNW MOUNTAIN CITY	1.17	IN	0648	PM 02/23	30.08N/97.96W
...KARNES COUNTY...					
13 SW KARNES CITY	2.49	IN	0800	PM 02/23	28.79N/98.06W
...KENDALL COUNTY...					
2 NW WARING	1.24	IN	0751	PM 02/23	29.98N/98.83W
...KERR COUNTY...					
12 NW KERR WILDLIFE MANAGEME	1.35	IN	0800	PM 02/23	30.20N/99.66W
12 ESE TELEGRAPH	1.34	IN	0747	PM 02/23	30.23N/99.73W
4 ENE MOUNTAIN HOME	1.26	IN	0615	PM 02/23	30.20N/99.30W
5 WSW HARPER	1.07	IN	0720	PM 02/23	30.26N/99.33W
...KINNEY COUNTY...					
W.NUECES RIVER	0.82	IN	0630	PM 02/23	29.48N/100.24W
...LAVACA COUNTY...					
1 SSE HALLETTSVILLE	3.42	IN	0640	PM 02/23	29.44N/96.94W



MOULTON	2.33	IN	0725	PM	02/23	29.57N/97.14W
...LEE COUNTY...						
3 WSW GIDDINGS	1.85	IN	0810	PM	02/23	30.17N/96.98W
MIDDLE YEGUA CREEK	1.27	IN	0415	PM	02/23	30.34N/96.90W
...LLANO COUNTY...						
3 E ENCHANTED ROCK STATION	1.68	IN	0656	PM	02/23	30.51N/98.80W
6 SSE LLANO	1.62	IN	0655	PM	02/23	30.67N/98.64W
9 ENE ENCHANTED ROCK STATION	1.59	IN	0655	PM	02/23	30.55N/98.70W
4 S LLANO	1.51	IN	0655	PM	02/23	30.69N/98.68W
2 SSE KINGSLAND	1.31	IN	0655	PM	02/23	30.64N/98.45W
...MEDINA COUNTY...						
6 NE YANCEY	3.19	IN	0753	PM	02/23	29.23N/99.06W
3 W RIO MEDINA	1.41	IN	0707	PM	02/23	29.43N/98.94W
HONDO CK NR KINGS WATER HOLE	1.34	IN	0500	PM	02/23	29.39N/99.15W
...TRAVIS COUNTY...						
3 SW CEDAR PARK	1.95	IN	0800	PM	02/23	30.47N/97.86W
1 NW BERGSTROM	1.79	IN	0836	PM	02/23	30.22N/97.69W
1 ESE BEE CAVE	1.72	IN	0540	PM	02/23	30.30N/97.93W
2 SSE ANDERSON MILL	1.70	IN	0800	PM	02/23	30.42N/97.80W
1 E LAKEWAY	1.63	IN	0540	PM	02/23	30.37N/97.96W
...UVALDE COUNTY...						
1 NNE SABINAL	1.77	IN	0622	PM	02/23	29.33N/99.47W
9 SW UVALDE	1.09	IN	0630	PM	02/23	29.12N/99.89W
...VAL VERDE COUNTY...						
EVANS CREEK NR COMSTOCK 9 SE	1.15	IN	0715	PM	02/23	29.54N/101.10W
SHUMLA BEND-PECOS R	0.58	IN	0515	PM	02/23	29.80N/101.45W
12 E COMSTOCK	0.43	IN	0615	PM	02/23	29.66N/100.96W
CAUTHORN RANCH NR JUNO 5S	0.39	IN	0500	PM	02/23	30.08N/101.11W
8 WSW LOMA ALTA	0.29	IN	0515	PM	02/23	29.88N/100.90W
...WILLIAMSON COUNTY...						
NEAR BRUSHY CREEK	1.48	IN	0616	PM	02/23	30.54N/97.75W
2 SSW GEORGETOWN	1.47	IN	0605	PM	02/23	30.61N/97.71W
2 NW ROUND ROCK	1.47	IN	0650	PM	02/23	30.55N/97.71W
TAYLOR	1.43	IN	0515	PM	02/23	30.58N/97.42W
2 SW BRUSHY CREEK	1.43	IN	0330	PM	02/23	30.49N/97.76W
...WILSON COUNTY...						
4 NW FLORESVILLE	3.27	IN	0613	PM	02/23	29.20N/98.20W
SAN ANTONIO RIVER NEAR FLORE	2.33	IN	0500	PM	02/23	29.11N/98.17W
5 ENE CALAVERAS LAKE	2.01	IN	0751	PM	02/23	29.32N/98.23W

OBSERVATIONS ARE COLLECTED FROM A VARIETY OF SOURCES WITH VARYING EQUIPMENT AND EXPOSURE. NOT ALL DATA LISTED ARE CONSIDERED OFFICIAL.

\$\$