

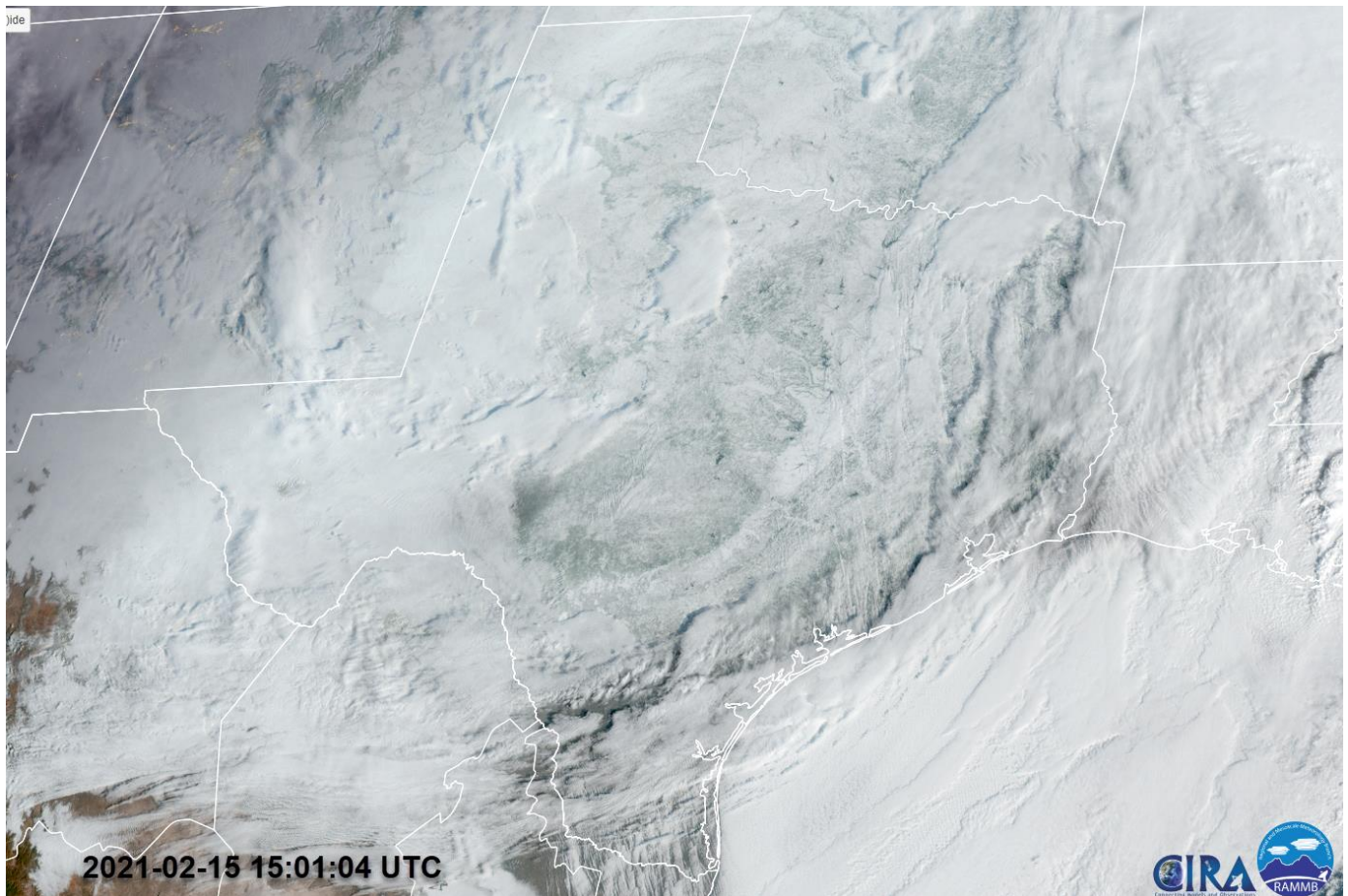


Austin/San Antonio Weather Forecast Office WEATHER EVENT SUMMARY

February 2021 Historical Winter Storm Event South-Central Texas



10-18 February 2021



A Snow-Covered Texas. GeoColor satellite image from the morning of 15 February, 2021.



South-Central Texas Winter Storm Event February 10-18, 2021

Event Summary

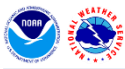
Overview

An unprecedented and historical eight-day period of winter weather occurred between 10 February and 18 February across South-Central Texas. The first push of arctic air arrived in the area on 10 February, with the cold air dropping temperatures into the 20s and 30s across most of the area. The first of several frozen precipitation events occurred on the morning of 11 February where up to 0.75 inches of freezing rain accumulated on surfaces in Llano and Burnet Counties and 0.25-0.50 inches of freezing rain accumulated across the Austin metropolitan area with lesser amounts in portions of the Hill Country and New Braunfels area.

For several days, the cold air mass remained in place across South-Central Texas, but a much colder air mass remained stationary across the Northern Plains. This record-breaking arctic air was able to finally move south into the region late on 14 February and into 15 February as a strong upper level low-pressure system moved through the Southern Plains. As this system moved through the region, snow began to fall and temperatures quickly fell into the single digits and teens. Most areas of South-Central Texas picked up at least an inch of snow with the highest amounts seen from Del Rio and Eagle Pass extending to the northeast into the Austin and San Antonio areas. Many areas along and near Interstate 35 reported 3 to 8 inches of snow.

With the cold arctic air mass still in place and temperatures still below freezing, another upper level disturbance approaches from the west. Ahead of it, warm air aloft led to freezing rain across the Hill Country and I-35 corridor on the evening of 16 February and into the morning of the 17th. Widespread areas recorded up to 0.25 inches of additional ice accumulation, with higher amounts of up to 0.6 inches of ice on already iced or snow-covered surfaces. Meanwhile, the upper disturbance sent a reinforcing cold front into the area the evening of the 17th. From the west, mixed precipitation in the form of freezing rain, sleet, graupel, and snow spread east and transitioned to all snow by the following Thursday morning. Significant record snowfall amounts as high as 11 inches fell in the Del Rio area, and the snow area spread east into the I-35 corridor. San Antonio recorded 2-3 inches, and Austin received less than an inch. Areas along Highway 90 between Del Rio and San Antonio picked up 4-7 inches, with some isolated higher totals.

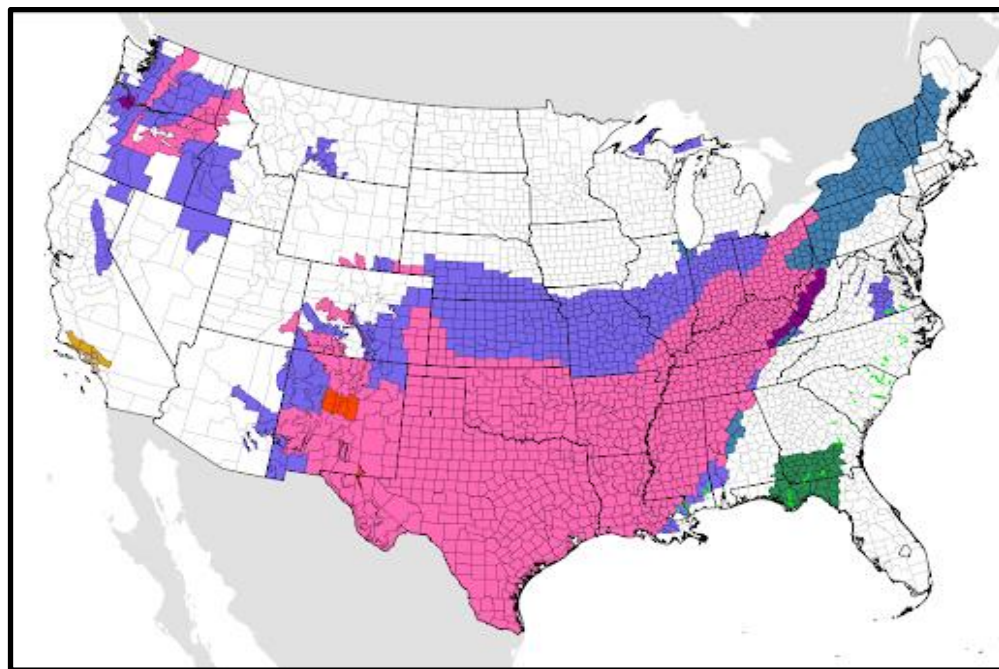
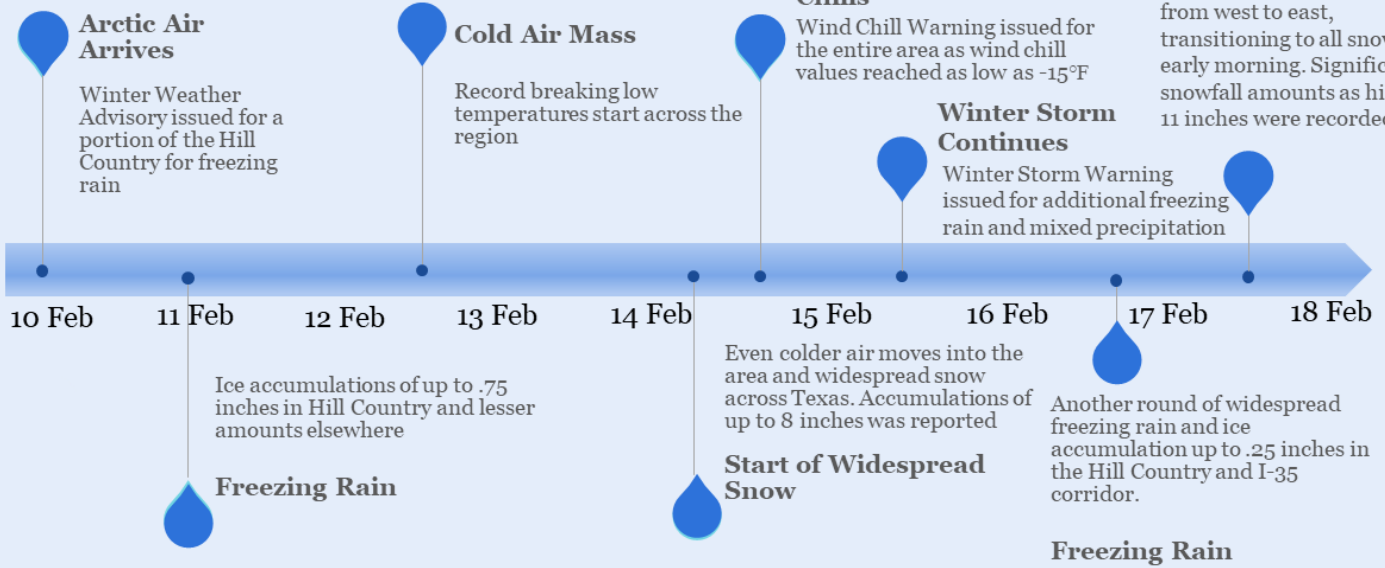
The blast of arctic air broke daily records for climate sites in the region. All climate sites saw 5 to 6 consecutive days of temperature records as well as multiple days of record-breaking snowfall. This unforgettable event had catastrophic impacts to the entire state of Texas, including South Central Texas, with failed power grids, burst water pipes, and limited road and air travel.



Timeline of Events



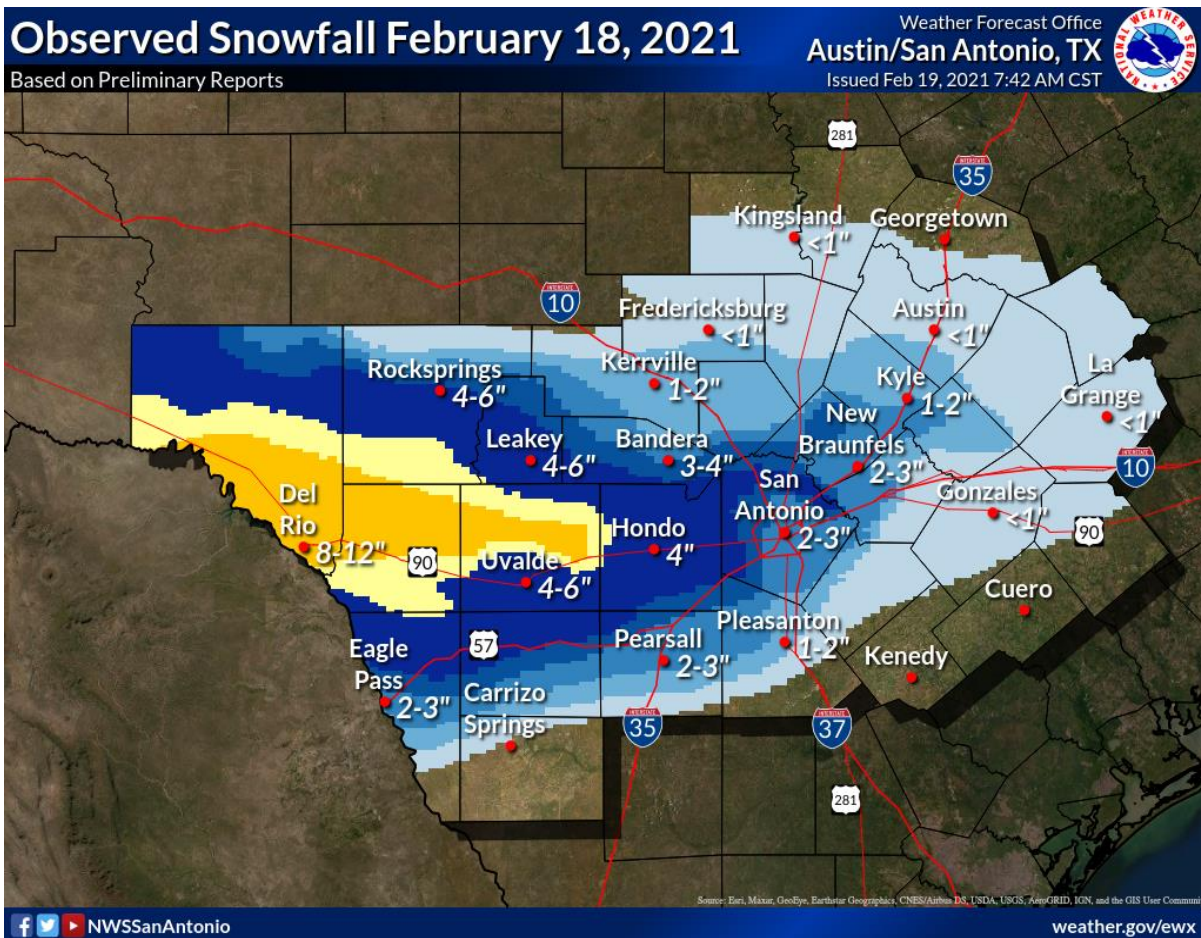
South-Central Texas Winter Storm Event February, 2021



Winter Storm Warnings across the entire State of Texas on February 14, 2021.



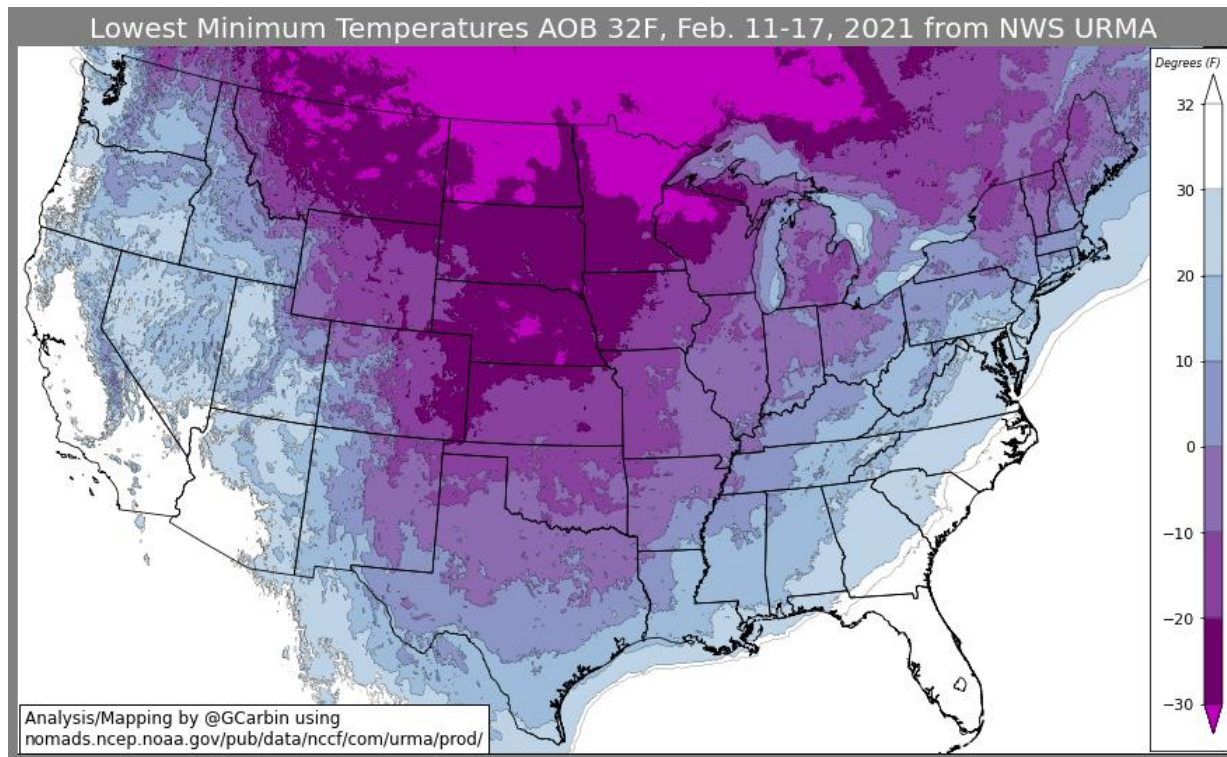
Snowfall Event Maps



Total Snowfall Event Map (Both snow events)



Minimum Temperature Map





Broken Records for Climate Sites

AUS - Austin Bergstrom International Airport

Date	MaxT/MinT	Records Broken
12 Feb, 2021	34 , 30	Record low MaxT of 34 beats previous record of 37, 1963.
13 Feb, 2021	32 , 28	Record low MaxT of 32 beat previous record of 38, 2004.
14 Feb, 2021	31 , 14	Record low MaxT of 31 beat previous record of 33, 1951. Record low MinT of 14 beat previous record of 24, 1999.
15 Feb, 2021	23 , 9	Record low MaxT of 23 beat previous record of 43, 1951. Record low MinT of 9 beat previous record of 23, 2007.
16 Feb, 2021	27 , 6	Record low MaxT of 27 beat previous record of 31, 1979. Record low MinT of 6 beat previous record of 20, 2007. THIS IS A NEW FEBRUARY RECORD FOR THE SITE (8, 2/2/1951),
18 Feb, 2021	32 , 27	Record low MaxT of 32 beat previous record of 39, 1979.

Date	Hours Below Freezing	Record Broken
12 - 19 Feb, 2021	164 hrs	Streak of hours <33 began 4 PM 12 Feb and ended prior to 11 AM on the 19th. Total of 6 days 20 hours. Previous record: 4d, 16h (late Jan-early Feb 1951)

Date	Total Snowfall	Record Broken
15 Feb, 2021	6.1"	Record Snowfall breaks previous record of a Trace, 1951.
14 – 15 Feb, 2021	6.4"	Event total 6.4" is highest all time 2-day total (data since 1948)



ATT - Camp Mabry - Austin, TX

Date	MaxT/MinT	Records Broken
13 Feb, 2021	31 , 26	Record low MaxT of 31 beat previous record of 33, 1905.
14 Feb, 2021	30 , 13	Record low MaxT of 30 beat previous record of 33, 1951.
15 Feb, 2021	25 , 8	Record low MaxT of 25 beat previous record of 38, 1909. Record low MinT of 8 beat previous record of 20, 1909.
16 Feb, 2021	26 , 7	Record low MaxT of 26 beat previous record of 40, 1900. Record low MinT of 7 beat previous record of 20, 1903.
18 Feb, 2021	33 , 24	Record low MaxT of 33 beat previous record of 37, 1936.

Date	Hours Below Freezing	Record Broken
12 - 18 Feb, 2021	144 hrs	Streak of hours <33 degrees began 4 PM on 12 Feb, ended 4 PM on the 18th (6d0h). Previous record 5d 20h (Dec 21-Dec 27 1983)

Date	Total Snowfall	Record Broken
15 Feb, 2021	5.4"	Record Snowfall breaks previous record of a Trace, 1978.
14 – 15 Feb, 2021	6.4"	Event total 6.4" is the 4th highest recorded at the site (data since 1898)



Broken Records for Climate Sites Continued

SAT - San Antonio International Airport

Date	MaxT/MinT	Records Broken
13 Feb, 2021	32 , 29	Record low MaxT of 32 beat previous record of 35, 1905.
14 Feb, 2021	30 , 13	Record low MaxT of 30 tied previous record of 30, 2014. Record low MinT of 13 beat previous record of 20, 1905.
15 Feb, 2021	28 , 9	Record low MaxT of 28 beat previous record of 31, 1895. Record low MinT of 9 beat previous record of 21, 1909.
16 Feb, 2021	26 , 12	Record low MaxT of 26 beat previous record of 37, 1903. Record low MinT of 12 beat previous record of 16, 1895.
18 Feb, 2021	32 , 28	Record low MaxT of 32 beat previous record of 39, 2006.

Note...The San Antonio International Airport was below freezing for 4 days 12 hours during this event. This was 1 hour shy of the record set back in late Jan-early Feb 1951.

Date	Total Snowfall	Record Broken
15 Feb, 2021	2.5"	No other snowfall recorded on this date.
14 – 15 Feb, 2021	3.7"	Event total 3.7" is 5th highest all time 2-day total (data since 1895)
18 Feb, 2021	2.5"	No other snowfall recorded on this date.
Feb, 2021	6.2"	New monthly record for February

DRT - Del Rio, TX

Date	MaxT/MinT	Records Broken
13 Feb, 2021	38 , 33	Record low MaxT of 32 beat previous record of 35, 1905.
14 Feb, 2021	34 , 18	Record low MaxT of 30 tied previous record of 30, 2014. Record low MinT of 13 beat previous record of 20, 1905.
*	*	*Incomplete data due to communication failure with observing system.

Date	Total Snowfall	Record Broken
18 Feb, 2021	11.2"	NEW ALL-TIME SNOWFALL RECORD FOR THE SITE (prev Feb record 2.7" Feb 8, 1983, prev all-time 24 hr record was 8.6" Jan 12-13, 1985)



Snowfall Reports

Public Information Statement - Feb 15, 2021

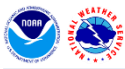
Public Information Statement
National Weather Service Austin/San Antonio TX
630 PM CST Mon Feb 15 2021

...24 HOUR SNOWFALL REPORTS...

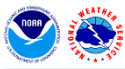
Location	Amount	Time/Date	Lat/Lon
...Texas...			
...Atascosa County...			
Poteet	3.0 in	1231 PM 02/15	29.04N/98.57W
...Bandera County...			
1 NNW Pipe Creek	5.0 in	0137 PM 02/15	29.72N/98.94W
5 NNE Hill Country State Nat	4.5 in	0313 AM 02/15	29.70N/99.16W
3 W Pipe Creek	4.0 in	0700 AM 02/15	29.72N/98.99W
Medina	3.0 in	0700 AM 02/15	29.80N/99.25W
1 N Medina	3.0 in	0800 AM 02/15	29.81N/99.25W
3 ENE Utopia	3.0 in	0700 AM 02/15	29.63N/99.49W
2 SSE Bandera	2.8 in	0900 AM 02/15	29.70N/99.06W
...Bastrop County...			
4 ESE Wyldwood	5.5 in	1140 AM 02/15	30.11N/97.41W
3 WNW Wyldwood	5.5 in	0949 AM 02/15	30.14N/97.52W
Bastrop	4.5 in	1048 AM 02/15	30.11N/97.31W
1 WSW Bastrop	4.3 in	1141 AM 02/15	30.11N/97.32W
1 WNW McDade	4.0 in	0700 AM 02/15	30.29N/97.25W
3 E Wyldwood	4.0 in	0854 AM 02/15	30.13N/97.42W
4 E Circle D-KC Estate	2.0 in	0700 AM 02/15	30.16N/97.17W
...Bexar County...			
1 N Sea World	6.0 in	1111 AM 02/15	29.48N/98.70W
2 SE Leon Valley	6.0 in	0952 AM 02/15	29.47N/98.59W
3 ESE Sea World	5.5 in	0925 AM 02/15	29.44N/98.66W
Leon Springs	5.5 in	0856 AM 02/15	29.67N/98.63W
2 W Olmos Park	5.0 in	1045 AM 02/15	29.47N/98.52W
Timberwood Park	5.0 in	0918 AM 02/15	29.71N/98.48W
2 NNW Helotes	5.0 in	0133 AM 02/15	29.59N/98.71W
2 SE Helotes	4.6 in	0943 AM 02/15	29.55N/98.67W
3 SSE Bulverde	4.5 in	0240 AM 02/15	29.70N/98.43W
2 WNW Castle Hills	4.5 in	0230 AM 02/15	29.54N/98.55W
3 N Hollywood Park	4.0 in	0228 AM 02/15	29.64N/98.49W
China Grove	4.0 in	0600 AM 02/15	29.40N/98.35W
1 NNE Universal City	4.0 in	0905 AM 02/15	29.56N/98.30W
4 SSE Timberwood Park	4.0 in	1225 PM 02/15	29.65N/98.46W
6 WSW Sea World	4.0 in	0928 AM 02/15	29.42N/98.78W
4 ENE Lackland AFB	4.0 in	0903 AM 02/15	29.40N/98.56W
1 S Balcones Heights	4.0 in	0837 AM 02/15	29.48N/98.55W
2 NE Saint Hedwig	3.5 in	0721 AM 02/15	29.44N/98.17W
1 E Hollywood Park	3.5 in	1026 AM 02/15	29.60N/98.47W
Converse	3.5 in	0934 AM 02/15	29.52N/98.31W
2 WSW Shavano Park	3.0 in	1254 AM 02/15	29.57N/98.58W
...Blanco County...			
3 NE Hye	4.0 in	0830 AM 02/15	30.28N/98.53W
3 SSE Blanco	4.0 in	0900 AM 02/15	30.06N/98.41W



...Burnet County...				
5 NNW Burnet	5.0 in	0700 AM	02/15	30.83N/98.26W
Granite Shoals	3.8 in	0930 AM	02/15	30.59N/98.38W
2 NE Bertram	3.5 in	0700 AM	02/15	30.77N/98.02W
Burnet	3.3 in	0700 AM	02/15	30.76N/98.23W
Marble Falls	3.0 in	0930 AM	02/15	30.58N/98.27W
...Caldwell County...				
2 SW Lockhart	4.8 in	1237 PM	02/15	29.86N/97.70W
6 SSE Dale	3.5 in	1142 AM	02/15	29.84N/97.54W
3 ENE Fentress	3.5 in	1223 PM	02/15	29.77N/97.72W
Lockhart	3.5 in	0915 AM	02/15	29.89N/97.67W
7 SE Dale	3.3 in	1238 PM	02/15	29.86N/97.47W
...Comal County...				
Canyon Lake	6.2 in	0944 AM	02/15	29.88N/98.26W
3 N Spring Branch	6.0 in	1011 AM	02/15	29.93N/98.40W
2 NNE Bulverde	5.8 in	0853 AM	02/15	29.76N/98.44W
New Braunfels	5.5 in	1227 PM	02/15	29.71N/98.13W
1 WNW New Braunfels	5.5 in	1037 AM	02/15	29.71N/98.14W
3 N Spring Branch	5.2 in	0900 AM	02/15	29.92N/98.41W
7 NNE New Braunfels	4.5 in	0331 AM	02/15	29.79N/98.07W
4 ENE New Braunfels	4.0 in	0105 PM	02/15	29.72N/98.06W
...DeWitt County...				
3 NNE Meyersville	1.7 in	0600 AM	02/15	28.97N/97.29W
...Dimmit County...				
3 E Carrizo Springs	1.5 in	0829 AM	02/15	28.52N/99.81W
2 SSW Carrizo Springs	1.3 in	0700 AM	02/15	28.49N/99.87W
...Fayette County...				
1 WSW La Grange	5.5 in	1133 AM	02/15	29.90N/96.89W
Muldoon	3.5 in	1042 AM	02/15	29.82N/97.07W
...Frio County...				
9 S Frio Town	4.5 in	1158 AM	02/15	28.89N/99.34W
6 ESE Frio Town	2.0 in	1000 AM	02/15	28.97N/99.23W
Dilley	1.0 in	0630 AM	02/15	28.66N/99.17W
...Gillespie County...				
4 W Fredericksburg	2.5 in	0124 AM	02/15	30.27N/98.94W
...Gonzales County...				
2 N Cheapside	3.5 in	0700 AM	02/15	29.31N/97.41W
Gonzales	3.0 in	1110 AM	02/15	29.51N/97.45W
...Guadalupe County...				
3 SE Kingsbury	6.0 in	1134 AM	02/15	29.63N/97.79W
5 NW Geronimo	5.0 in	0335 AM	02/15	29.70N/98.03W
3 NNW Cibolo	5.0 in	1131 AM	02/15	29.61N/98.25W
4 NE New Berlin	4.5 in	0700 AM	02/15	29.50N/98.04W
2 SSE New Braunfels	4.0 in	1056 AM	02/15	29.67N/98.11W
1 SSW Seguin	3.0 in	0700 AM	02/15	29.55N/97.97W
1 NNE Geronimo	3.0 in	0700 AM	02/15	29.68N/97.96W
4 WNW Geronimo	2.5 in	0103 AM	02/15	29.70N/98.03W
...Hays County...				
2 SSW Driftwood	7.5 in	0800 AM	02/15	30.09N/98.05W
4 WNW Woodcreek	7.1 in	0700 AM	02/15	30.06N/98.17W
5 WNW San Marcos	7.0 in	1156 AM	02/15	29.91N/98.02W
4 WSW Wimberley	6.0 in	0700 AM	02/15	29.97N/98.16W
4 SSE Buda	6.0 in	1149 AM	02/15	30.04N/97.81W
Dripping Springs	6.0 in	1015 AM	02/15	30.19N/98.09W
Kyle	5.9 in	0916 AM	02/15	29.99N/97.88W
1 SSW Woodcreek	5.5 in	0800 AM	02/15	30.02N/98.12W



6 ENE Dripping Springs	5.0 in	0700 AM	02/15	30.22N/97.99W
1 SSE Wimberley	4.0 in	0858 AM	02/15	29.98N/98.09W
...Karnes County...				
Falls City	1.5 in	1200 PM	02/15	28.98N/98.02W
...Kendall County...				
6 NW Boerne	7.0 in	0700 AM	02/15	29.86N/98.81W
1 W Boerne	6.0 in	0835 AM	02/15	29.79N/98.75W
4 NNW Spring Branch	5.5 in	1228 PM	02/15	29.93N/98.44W
1 SSE Sisterdale	5.2 in	0700 AM	02/15	29.95N/98.71W
4 NNE Boerne	5.0 in	0800 AM	02/15	29.85N/98.71W
1 ESE Boerne	4.5 in	1155 AM	02/15	29.79N/98.71W
6 NNW Bergheim	3.7 in	0700 AM	02/15	29.91N/98.60W
Comfort	2.5 in	0700 AM	02/15	29.96N/98.90W
...Kerr County...				
Ingram	3.4 in	0700 AM	02/15	30.07N/99.24W
1 N Ingram	3.4 in	0800 AM	02/15	30.09N/99.24W
2 SSW Kerrville-Schreiner Pa	3.2 in	0730 AM	02/15	29.98N/99.14W
1 NNE Hunt	2.5 in	0815 AM	02/15	30.09N/99.33W
...Kinney County...				
Brackettville	4.5 in	1000 AM	02/15	29.31N/100.42W
...Lavaca County...				
8 N Hallettsville	1.2 in	0700 AM	02/15	29.56N/96.94W
2 NNW Hallettsville	1.0 in	0700 AM	02/15	29.47N/96.95W
...Lee County...				
Dime Box	6.0 in	0700 AM	02/15	30.36N/96.82W
6 SSW Giddings	5.5 in	1241 PM	02/15	30.10N/96.97W
5 ENE Paige	4.0 in	1230 PM	02/15	30.23N/97.03W
...Llano County...				
9 SSE Llano	5.0 in	0123 PM	02/15	30.62N/98.65W
1 W Inks Lake State Park	4.0 in	1009 AM	02/15	30.74N/98.39W
Llano	3.3 in	0730 AM	02/15	30.75N/98.67W
3 N Kingsland	3.0 in	0600 AM	02/15	30.70N/98.44W
...Maverick County...				
3 NNW Elm Creek	5.0 in	1141 AM	02/15	28.81N/100.50W
Eagle Pass	3.0 in	0800 AM	02/15	28.71N/100.50W
...Medina County...				
7 W Castroville	6.0 in	0700 AM	02/15	29.35N/99.00W
Hondo	6.0 in	1013 AM	02/15	29.35N/99.14W
...Real County...				
Leakey	3.0 in	0929 AM	02/15	29.72N/99.76W
...Travis County...				
Lakeway	7.5 in	0800 AM	02/15	30.37N/97.98W
5 NNE Austin	6.6 in	0947 AM	02/15	30.34N/97.71W
4 N Austin	6.5 in	1154 AM	02/15	30.34N/97.74W
1 S Lakeway	6.5 in	1022 AM	02/15	30.35N/97.98W
Lakeway	6.5 in	1005 AM	02/15	30.36N/97.98W
4 WNW Sunset Valley	6.5 in	0825 AM	02/15	30.24N/97.86W
1 S McKinney Falls State Par	6.0 in	1020 AM	02/15	30.16N/97.72W
6 NNE West Lake Hills	5.9 in	0103 PM	02/15	30.36N/97.76W
3 SSW Jollyville	5.8 in	0700 AM	02/15	30.41N/97.76W
2 SSE Jollyville	5.8 in	0835 AM	02/15	30.42N/97.74W
2 ESE Lakeway	5.6 in	0834 AM	02/15	30.36N/97.95W
Lago Vista	5.5 in	1141 AM	02/15	30.46N/97.99W
2 NNW Tanglewood Forest	5.3 in	1050 AM	02/15	30.21N/97.86W
3 NNW Austin	5.1 in	0732 AM	02/15	30.31N/97.76W



3 SW Pflugerville	5.0 in	1004 AM 02/15	30.40N/97.65W
3 SSE Wells Branch	5.0 in	1001 AM 02/15	30.41N/97.67W
7 SW Briarcliff	5.0 in	0914 AM 02/15	30.34N/98.13W
4 NE Austin	5.0 in	0204 AM 02/15	30.32N/97.69W
3 S Jollyville	4.4 in	0206 AM 02/15	30.41N/97.76W
Manor	4.0 in	1257 AM 02/15	30.35N/97.56W
1 SW Anderson Mill	4.0 in	0815 AM 02/15	30.44N/97.82W
...Uvalde County...			
Sabinal	5.0 in	1227 AM 02/15	29.32N/99.47W
8 S Montell	3.0 in	0900 AM 02/15	29.42N/100.02W
...Val Verde County...			
1 NNW Del Rio	3.0 in	0138 PM 02/15	29.37N/100.90W
...Williamson County...			
1 WSW Leander	8.0 in	1107 AM 02/15	30.56N/97.87W
1 WNW Cedar Park	8.0 in	1225 PM 02/15	30.52N/97.85W
Cedar Park	7.5 in	1144 AM 02/15	30.51N/97.83W
Round Rock	7.0 in	0500 AM 02/15	30.52N/97.67W
1 N Brushy Creek	7.0 in	0134 PM 02/15	30.53N/97.74W
1 NE Round Rock	6.0 in	1146 AM 02/15	30.53N/97.66W
2 WSW Jollyville	6.0 in	0850 AM 02/15	30.44N/97.78W
Anderson Mill	5.6 in	0940 AM 02/15	30.46N/97.80W
6 ESE Coupland	5.5 in	0600 AM 02/15	30.42N/97.29W
Georgetown	5.2 in	1033 AM 02/15	30.65N/97.69W
1 S Round Rock	5.0 in	1007 AM 02/15	30.50N/97.67W
Brushy Creek	5.0 in	0909 AM 02/15	30.51N/97.74W
2 NNW Georgetown Dam	4.8 in	1009 AM 02/15	30.69N/97.73W
1 SW Round Rock	3.0 in	0113 AM 02/15	30.51N/97.68W
...Wilson County...			
5 N Floresville	3.5 in	1143 AM 02/15	29.21N/98.16W
3 ENE Calaveras Lake	3.0 in	0700 AM 02/15	29.29N/98.25W
2 N Sutherland Springs	2.8 in	1234 PM 02/15	29.30N/98.06W
3 E La Vernia	2.3 in	0108 PM 02/15	29.35N/98.06W
...Zavala County...			
La Pryor	5.5 in	1012 AM 02/15	28.94N/99.85W
Crystal City	4.0 in	0700 AM 02/15	28.69N/99.82W

Observations are collected from a variety of sources with varying equipment and exposures. We thank all volunteer weather observers for their dedication. Not all data listed are considered official.



Public Information Statement - Feb 19, 2021

Public Information Statement
National Weather Service Austin/San Antonio TX
1027 AM CST Fri Feb 19 2021

...SNOWFALL REPORTS...

Location	Amount	Time/Date	Provider
...Texas...			
...Bandera County...			
2 ESE Lake Medina Shores	4.0 in	0400 PM 02/18	Amateur Radio
Pipe Creek	3.0 in	0232 PM 02/18	Public
6 ESE Medina	2.0 in	1049 AM 02/18	Public
5 SSE Camp Verde	1.3 in	0200 PM 02/18	Emergency Mngr
...Bexar County...			
1 N Leon Springs	4.5 in	0230 PM 02/18	Public
3 NW Helotes	3.5 in	0117 PM 02/18	Trained Spotter
3 SE Helotes	3.0 in	0330 PM 02/18	Trained Spotter
1 W Balcones Heights	3.0 in	0606 PM 02/18	Broadcast Media
1 WSW Timberwood Park	2.8 in	0330 PM 02/18	Public
2 WNW Castle Hills	2.8 in	0530 PM 02/18	Broadcast Media
2 SW Timberwood Park	2.5 in	0105 PM 02/18	Public
3 E Castle Hills	2.3 in	0330 PM 02/18	Other Federal
7 SW China Grove	2.1 in	1220 PM 02/18	Public
3 WSW Sea World	2.0 in	1119 AM 02/18	Public
Shavano Park	2.0 in	1228 PM 02/18	Public
Converse	2.0 in	0135 PM 02/18	Public
Hollywood Park	2.0 in	0140 PM 02/18	Trained Spotter
4 SE San Antonio	1.9 in	0230 PM 02/18	Trained Spotter
3 NNW Live Oak	1.5 in	1246 PM 02/18	Trained Spotter
Boerne 5.8 SSE	1.5 in	0600 AM 02/19	COCORAHS
...Blanco County...			
Johnson City	0.5 in	0500 PM 02/18	Emergency Mngr
...Caldwell County...			
5 SSW Lockhart	1.5 in	0205 PM 02/18	Trained Spotter
...Comal County...			
3 N Canyon Lake	5.3 in	0356 PM 02/18	Public
2 S Canyon Lake	3.5 in	0330 PM 02/18	Public
Spring Branch	2.7 in	1257 PM 02/18	Public
2 NNE Bulverde	2.6 in	1127 AM 02/18	NWS Employee
New Braunfels 0.1 ENE	2.5 in	0700 AM 02/19	COCORAHS
3 WNW New Braunfels	2.4 in	0402 PM 02/18	NWS Employee
5 WNW New Braunfels	2.0 in	0400 PM 02/18	NWS Employee
8 WSW San Marcos	1.5 in	1227 PM 02/18	Emergency Mngr
7 NNE New Braunfels	1.5 in	0300 PM 02/18	NWS Employee
...Frio County...			
Moore	2.5 in	0259 PM 02/18	Emergency Mngr
Pearsall	2.0 in	0258 PM 02/18	County Official
Dilley	0.1 in	0256 PM 02/18	Emergency Mngr
...Guadalupe County...			
New Braunfels 3.3 S	2.6 in	0805 AM 02/19	COCORAHS
3 NNW Cibolo	2.5 in	0418 PM 02/18	NWS Employee
Zorn	1.5 in	0342 PM 02/18	County Official
5 NW Geronimo	1.5 in	0413 PM 02/18	NWS Employee
Sequin	1.0 in	0322 PM 02/18	Emergency Mngr

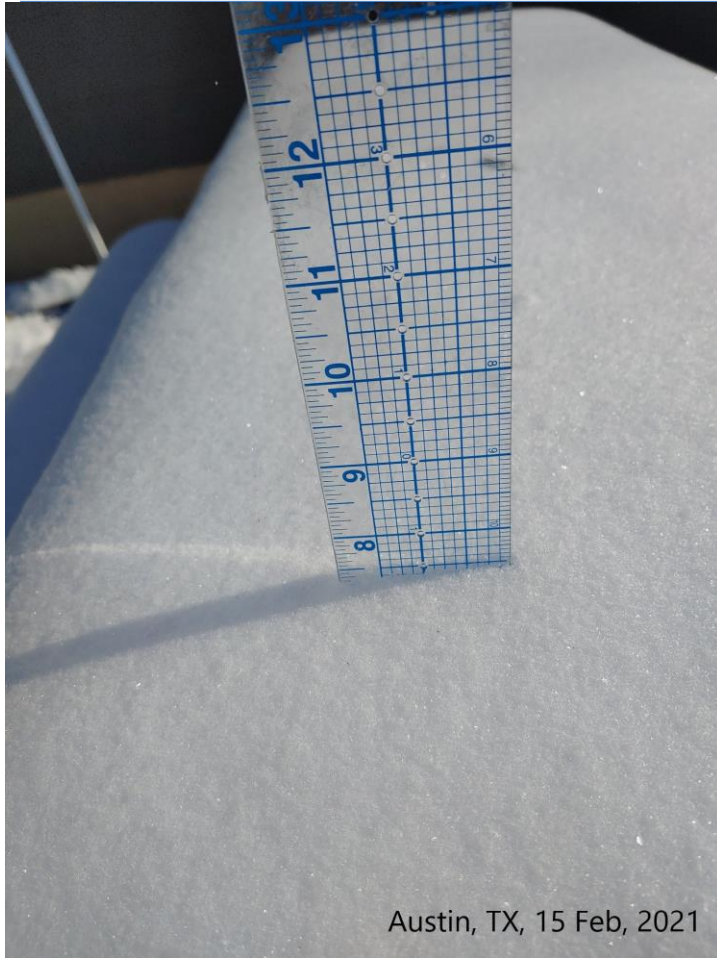


...Hays County...				
Wimberley 4.4 E	3.0 in	0840 AM	02/19	COCORAHS
San Marcos	2.5 in	0155 PM	02/18	Public
4 W San Marcos	2.0 in	0430 PM	02/18	Trained Spotter
3 SSW Kyle	1.5 in	1257 PM	02/18	NWS Employee
Woodcreek 0.5 SSW	1.0 in	0800 AM	02/19	COCORAHS
Dripping Springs 4.7 ENE	0.7 in	0700 AM	02/19	COCORAHS
...Kendall County...				
Boerne	3.5 in	0227 PM	02/18	Emergency Mngr
Boerne 6.5 N	3.5 in	0700 AM	02/19	COCORAHS
Boerne 1.2 E	1.8 in	0700 AM	02/19	COCORAHS
Boerne 1.6 E	1.5 in	0608 AM	02/19	COCORAHS
Comfort 0.9 WSW	0.4 in	0700 AM	02/19	COCORAHS
...Kinney County...				
Brackettville	7.8 in	0830 PM	02/18	Emergency Mngr
...Medina County...				
Devine 0.4 S	4.0 in	0800 AM	02/19	COCORAHS
3 W Rio Medina	3.9 in	0300 PM	02/18	Cocorahs
Mico 22 W	3.0 in	0855 AM	02/19	COOP
Hondo	2.5 in	1140 AM	02/18	Public
...Real County...				
4 NNW Leakey	4.5 in	0400 PM	02/18	Cocorahs
Leakey 1.5 ENE	2.5 in	0638 AM	02/19	COCORAHS
...Travis County...				
3 SSW Jollyville	0.1 in	0417 PM	02/18	CO-OP Observer
...Uvalde County...				
4 NNE Uvalde	5.0 in	0425 PM	02/18	Emergency Mngr
2 E Uvalde	3.5 in	0141 PM	02/18	Emergency Mngr
8 SSW Concan	3.5 in	0425 PM	02/18	Emergency Mngr
Concan	3.5 in	0630 PM	02/18	Public
...Val Verde County...				
3 SSE Lake View	11.2 in	0530 PM	02/18	CO-OP Observer
3 NW Del Rio	8.5 in	1200 PM	02/18	Trained Spotter
...Wilson County...				
La Vernia 3.0 E	0.8 in	0800 AM	02/19	COCORAHS
Stockdale 8.4 N	0.5 in	0800 AM	02/19	COCORAHS
6 NW Pandora	0.3 in	0300 PM	02/18	Emergency Mngr
Floresville	0.1 in	0300 PM	02/18	Emergency Mngr
Stockdale	0.1 in	0300 PM	02/18	Emergency Mngr

Observations are collected from a variety of sources with varying equipment and exposures. We thank all volunteer weather observers for their dedication. Not all data listed are considered official.

Event Photos

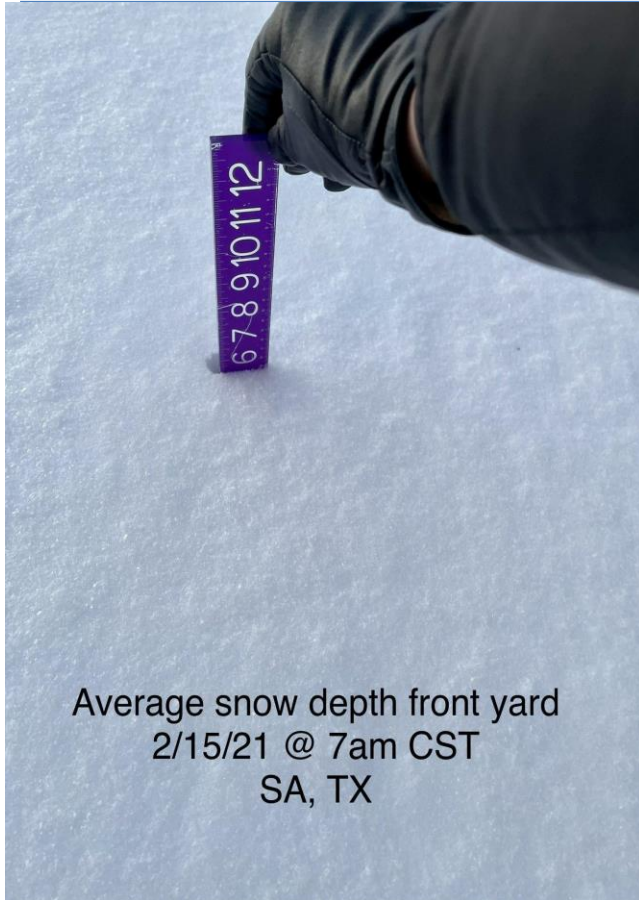




Austin, TX, 15 Feb, 2021



Austin, TX, 15 Feb, 2021



Average snow depth front yard
2/15/21 @ 7am CST
SA, TX



Bulverde, TX, 16 Feb, 2021

