

# Weather Briefing

## Winter Weather Tuesday – Wednesday



NWS Peachtree City, Georgia  
January 27, 2014



# Winter Storm Watch



- From 10 AM Tuesday through 1 PM Wednesday.
- Wintry Mix of Snow, Sleet, & Freezing Rain.
- Accumulations will cause significant impacts in these areas.

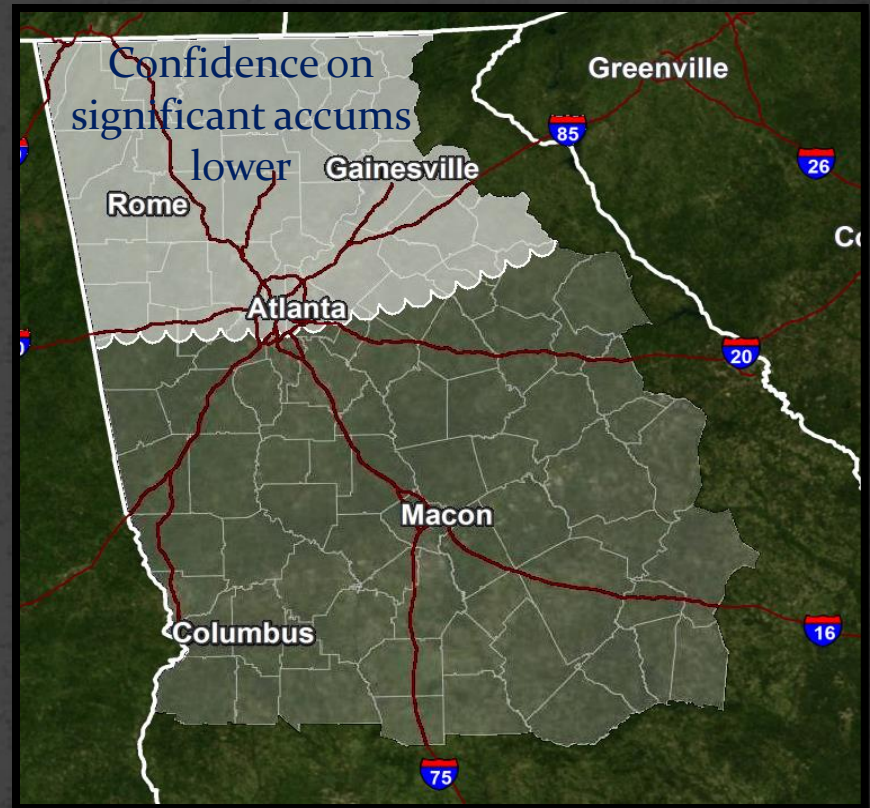
# Arctic Airmass moving in..



# Some Uncertainties Remain

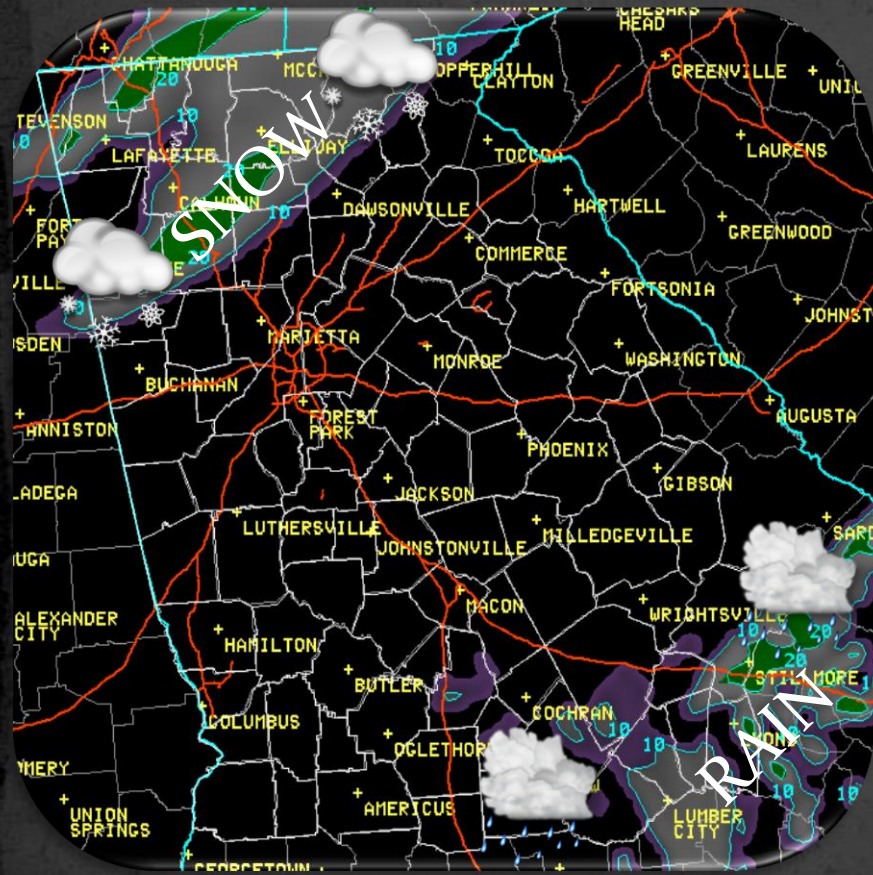


Timing Uncertainty



Precip Amount Uncertainty

# Precipitation Type & Progression



Forecast Radar, **7 AM Tuesday**



Forecast Radar, **Noon Tuesday**



# Precipitation Type & Progression



Forecast Radar, **3 PM Tuesday**



Forecast Radar, **8 PM Tuesday**



# Precipitation Type & Progression



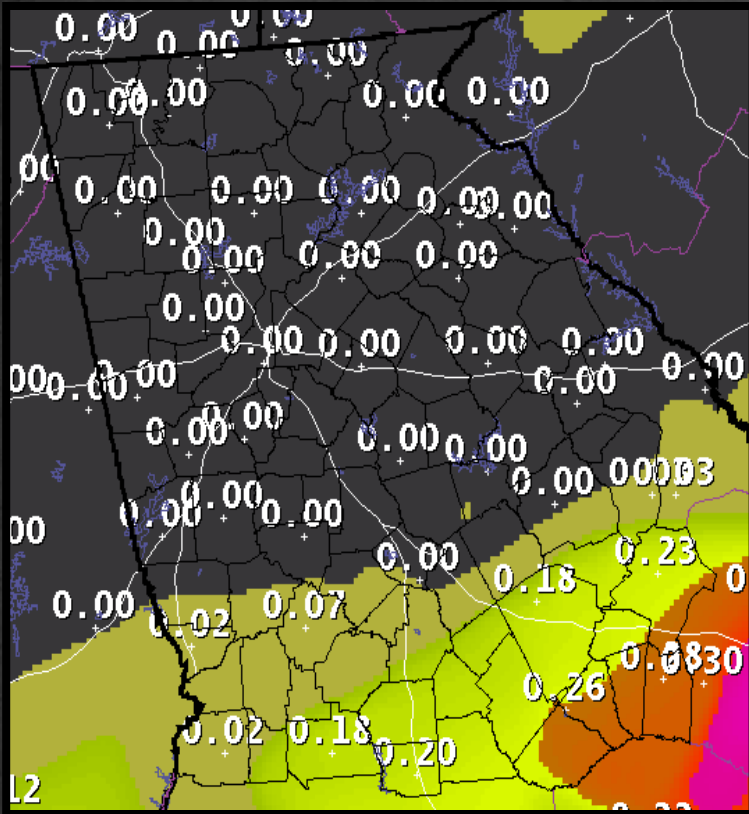
Forecast Radar, **11 PM Tuesday**



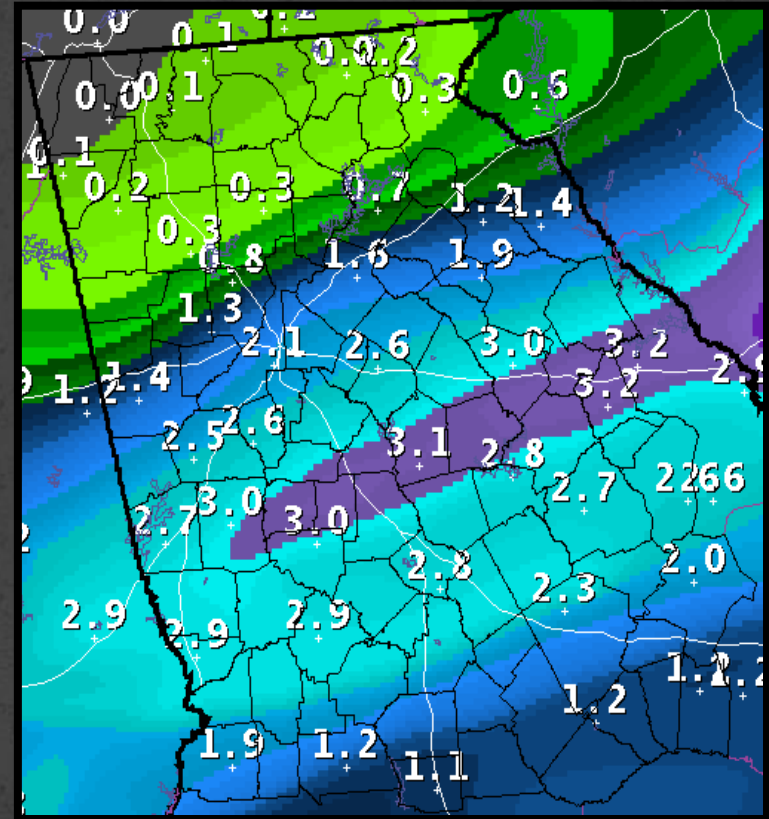
Forecast Radar, **1 AM Wednesday**



# Storm Total Amounts



Freezing Rain

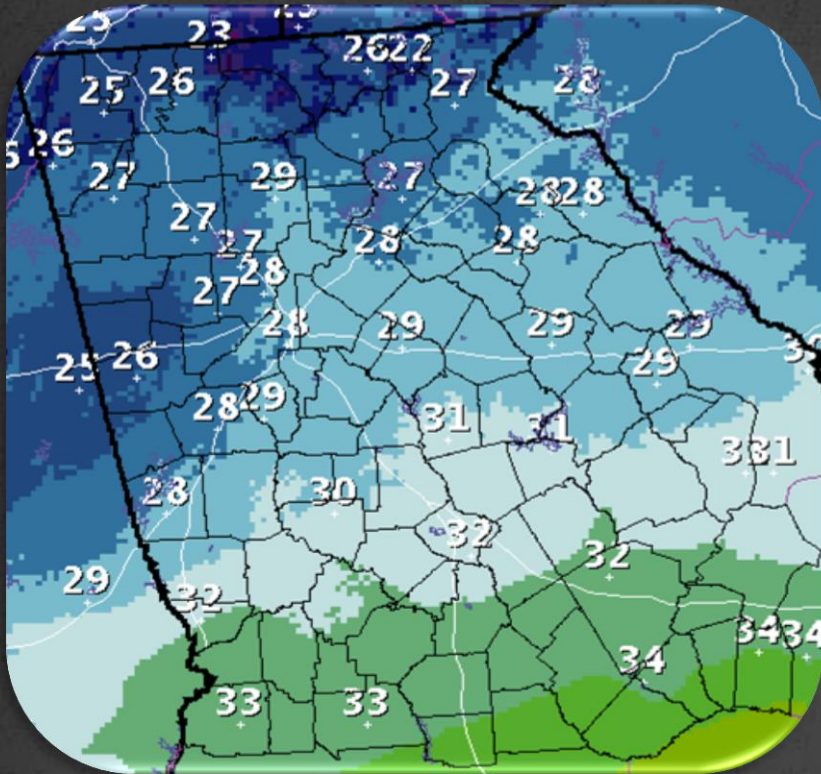


Snow / Sleet

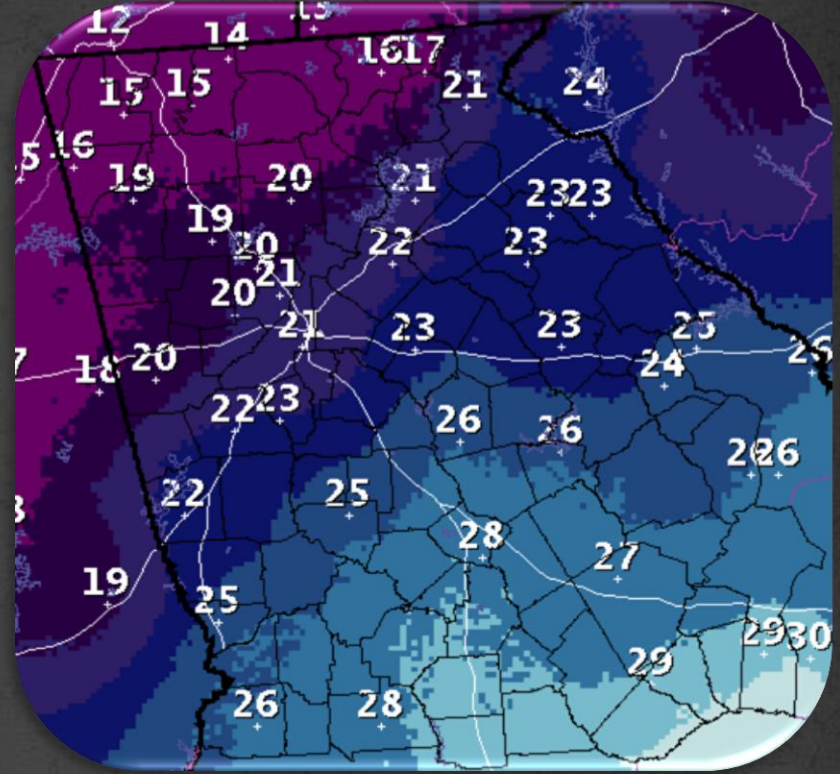
- Sleet will impact storm total snowfall. More sleet would mean lower snow amounts.



# Tuesday Temperatures



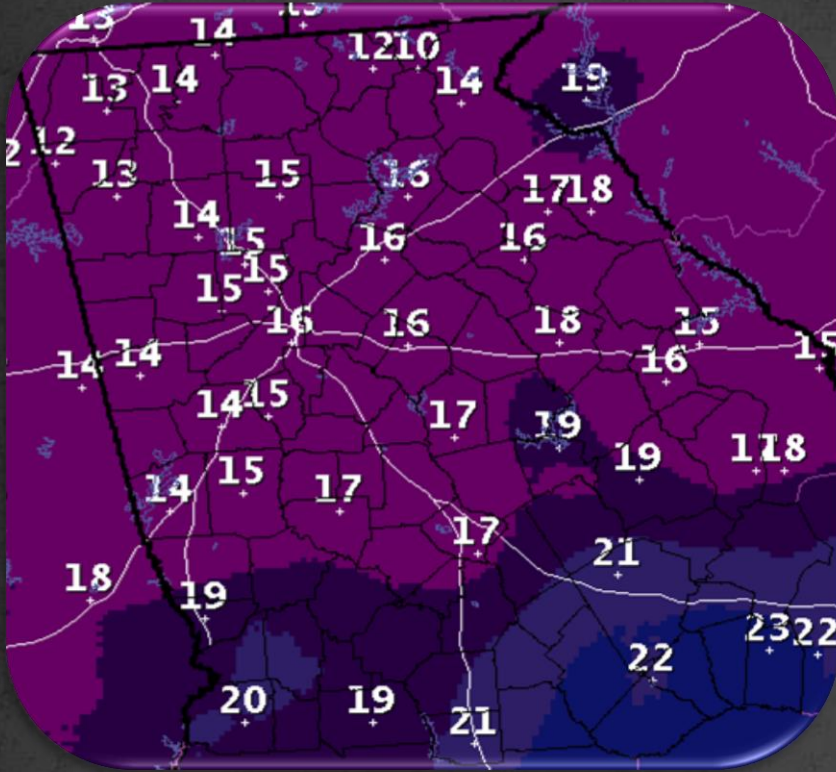
7 AM Temperature



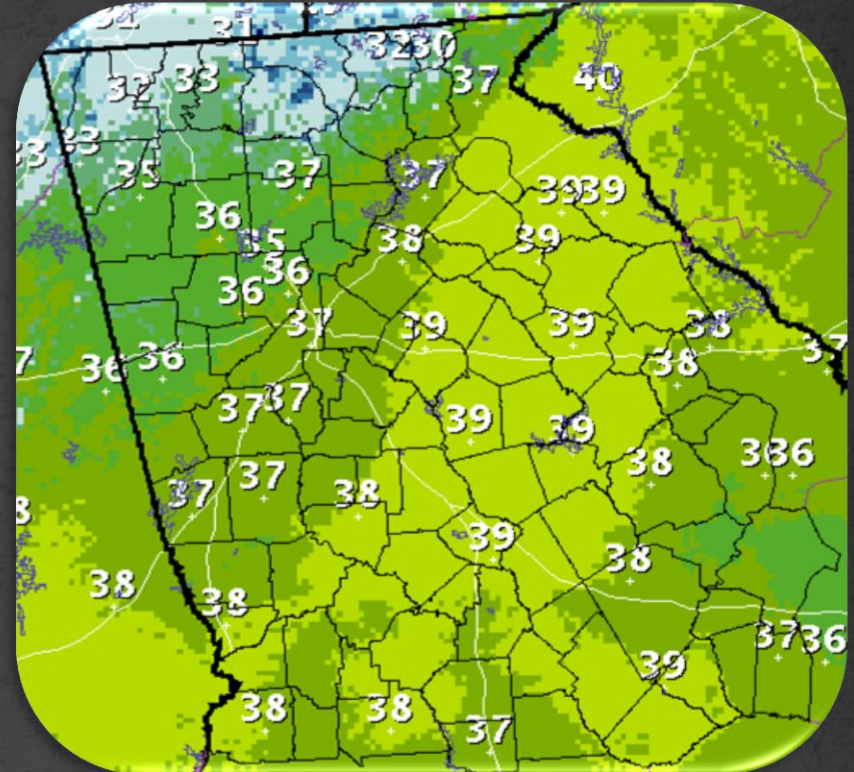
7 PM Temperatures

- Notice that high temperatures occur in the early morning.
- Temperatures will be below freezing area wide by evening when precipitation is ongoing.

# Wednesday Temperatures



Wednesday AM Low Temps



Wednesday PM High Temps

- Hard Freeze Wednesday morning
- Temperatures rebounding to slightly above freezing
- Where sun comes out, some melting on roads will occur, but it will refreezing overnight.

# Conclusion

- Significant travel problems across much of central and some of north Georgia, including parts of the Atlanta metro.
- Heaviest snowfall amounts currently appear likely to be in a SW to NE band in the area between Macon and Atlanta metro.
- SE portions of the area can expect significant icing from freezing rain – will likely lead to some power outages in this area.
- *There will be another briefing **tomorrow at 9 AM.***

