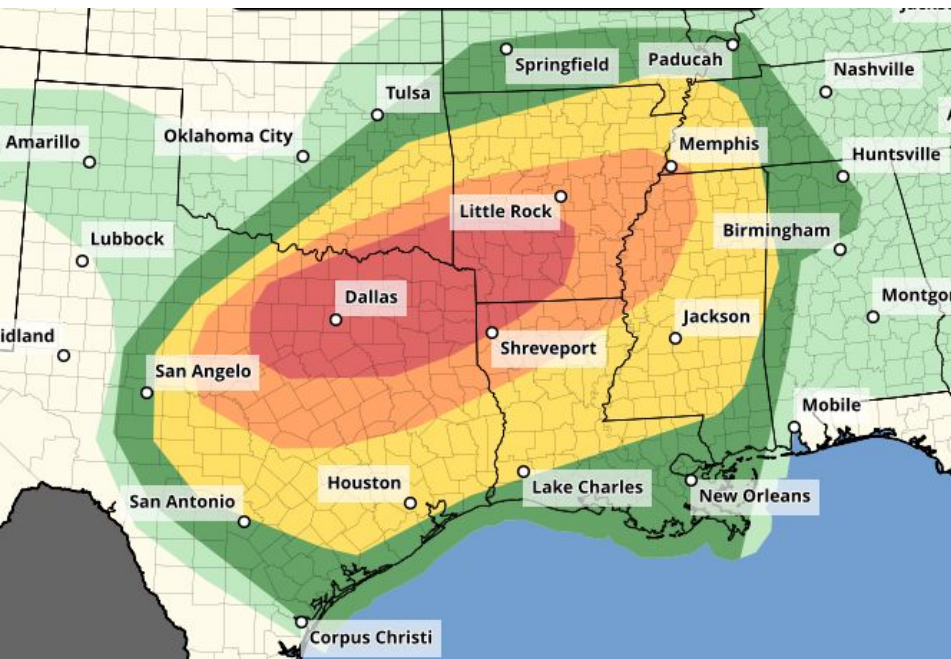


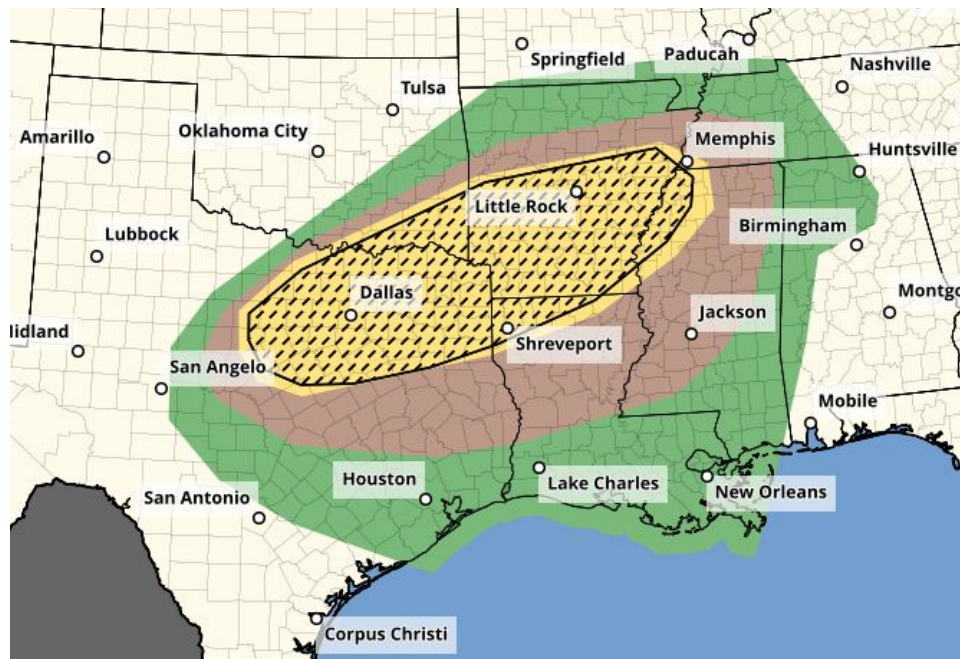
Severe Weather Outlook - Today and Tonight



Overall Outlook



Tornado Outlook

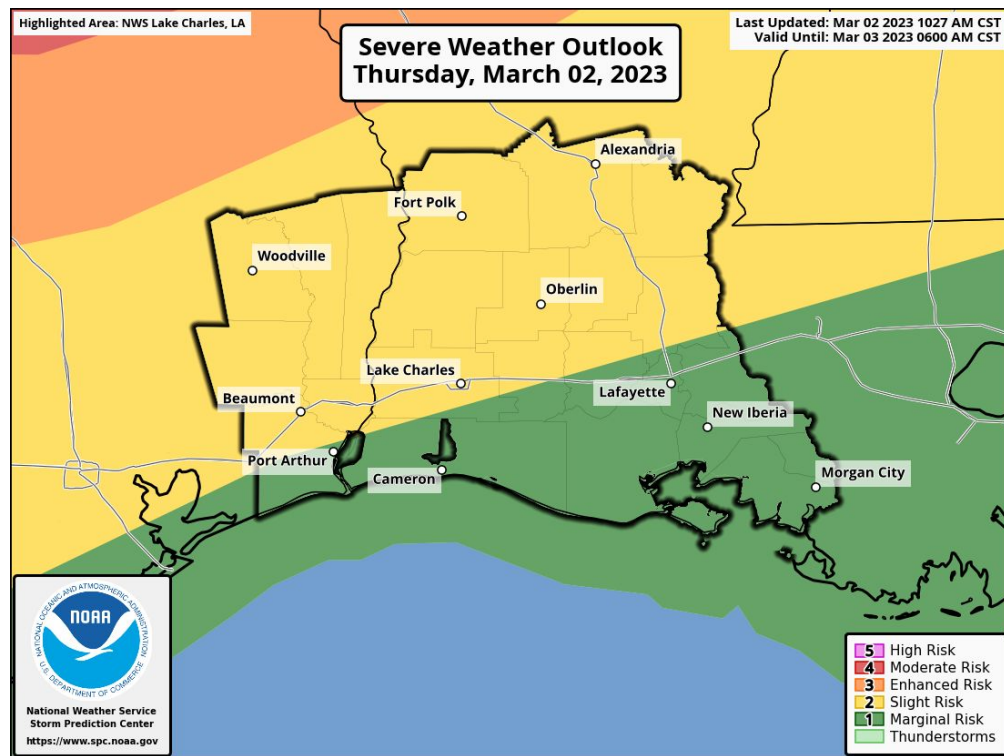




Severe Weather Outlook: Thursday March 2nd, 2023

Key Messages:

- **Impacts:** A **Marginal** (level 1 out of 5) to **Slight** (level 2 out of 3) to **Enhanced** (level 3 out of 5) Potential Risk for severe thunderstorms. The main hazard is damaging straight line wind gusts, however a few quick spin up tornadoes, and large hail can not be ruled out.
- **Where:** The **Enhanced** Potential Risk is north a Woodville to Alexandria line, the **Slight** Potential Risk is northwest of a Port Arthur to Lake Charles to Opelousas line with the **Marginal** Potential Risk southeast of that line.
- **When:** A line of storms Thursday evening into Thursday night. Mainly between 9 pm and 4 am.
- **Confidence:** There is High confidence in the development of a line of storms. Medium confidence in the severe storms along the line.



National Oceanic and
Atmospheric Administration

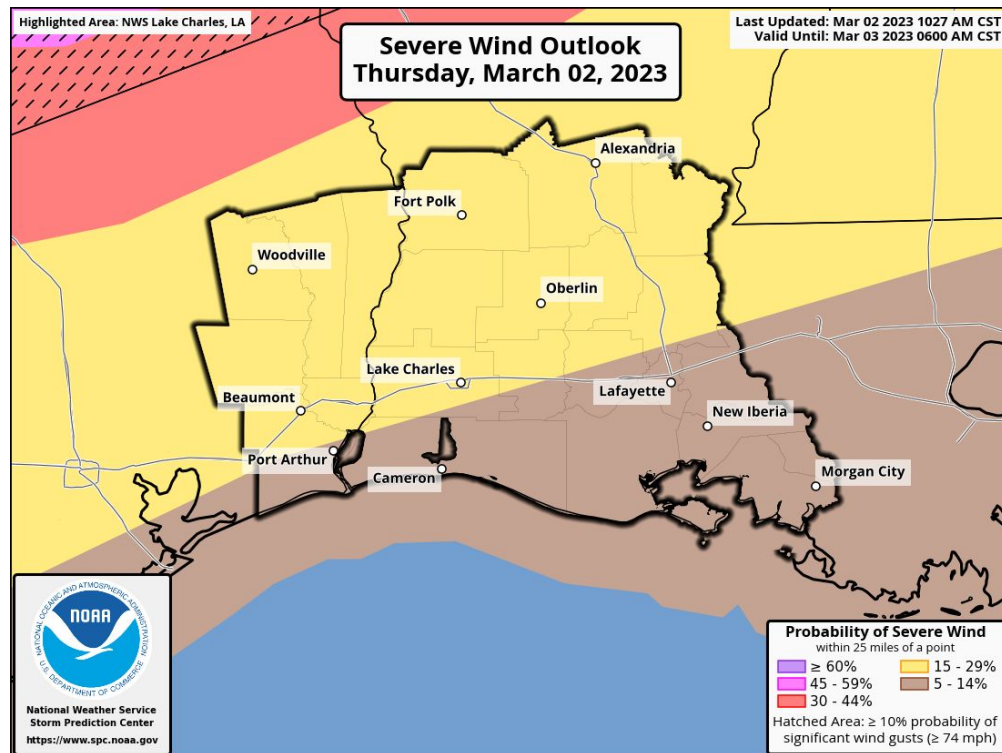
U.S. Department of Commerce

National Weather Service
Lake Charles, LA

Severe Wind Probabilities: Thursday Night March 2nd, 2023



- **Risk Level 3:** 30 to 44 percent chance of thunderstorm wind gusts over 58 mph north of a Woodville to Alexandria line. There is also a risk of significant damaging winds of greater than 74 mph northwest of a Woodville to Toledo Bend line.
- **Risk Level 2:** 15 to 29 percent chance of thunderstorm wind gusts over 58 mph northwest of a Port Arthur to Lake Charles to Opelousas line.
- **Risk Level 1:** 5 to 14 percent chance of thunderstorm wind gusts over 58 mph southeast of a Port Arthur to Lake Charles to Opelousas line.



National Oceanic and
Atmospheric Administration

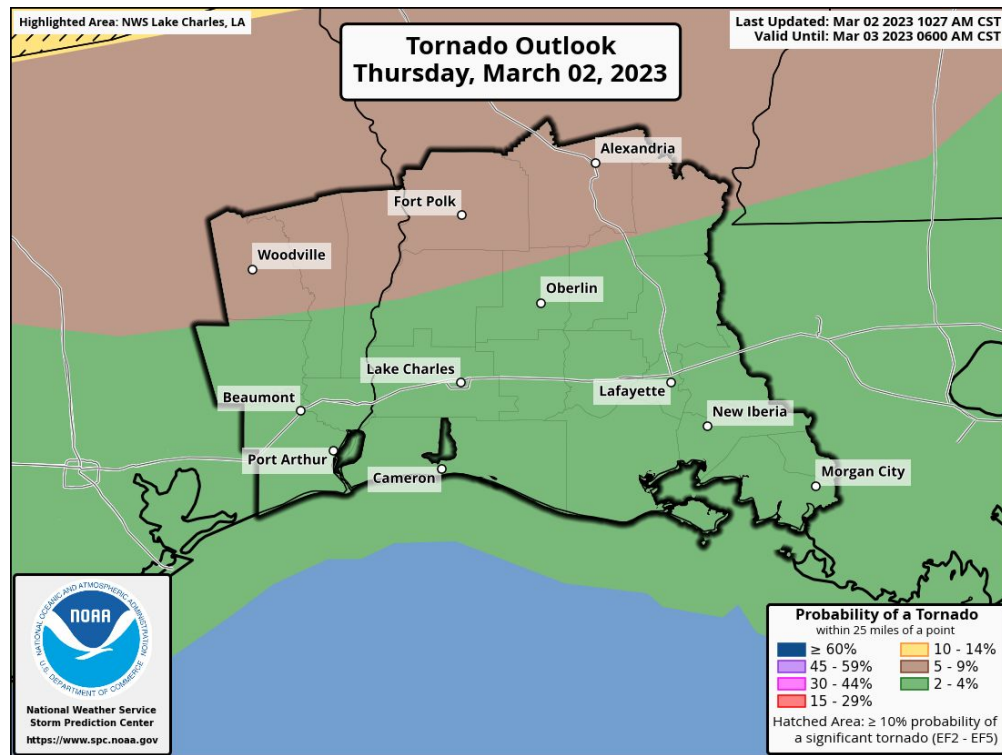
U.S. Department of Commerce

National Weather Service
Lake Charles, LA

Tornado Probabilities: Thursday Night March 2nd, 2023



- **Risk Level 3:** 10 to 14 percent chance of a tornado north of a Woodville to Alexandria line with a risk of significant tornadoes of EF2 strength of greater.
- **Risk Level 2:** 5 to 9 percent chance of a tornado north of a Beaumont to Opelousas line.
- **Risk Level 1:** 2 to 4 percent chance of a tornado south of a Beaumont to Opelousas line.



National Oceanic and
Atmospheric Administration

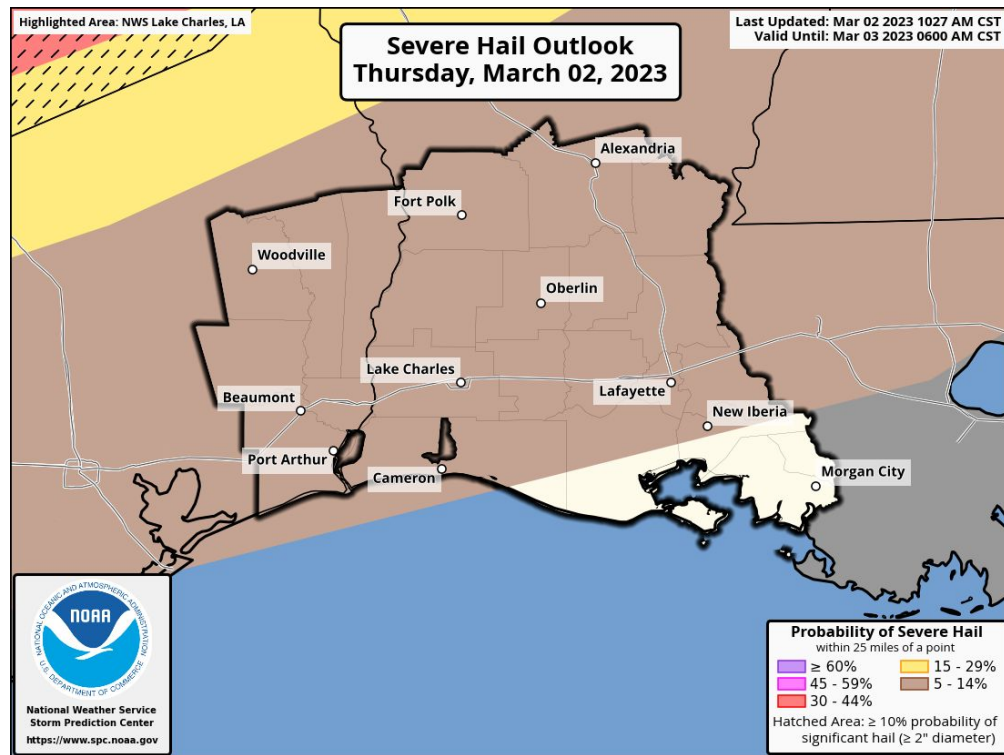
U.S. Department of Commerce

National Weather Service
Lake Charles, LA

Severe Hail Probabilities: Thursday Night March 2nd, 2023



→ **Risk Level 1:** 5 to 14 percent chance of Hail 1 inch in diameter or larger.



National Oceanic and
Atmospheric Administration

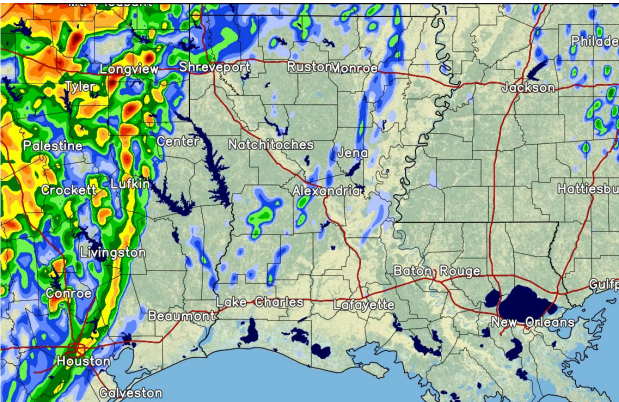
U.S. Department of Commerce

National Weather Service
Lake Charles, LA

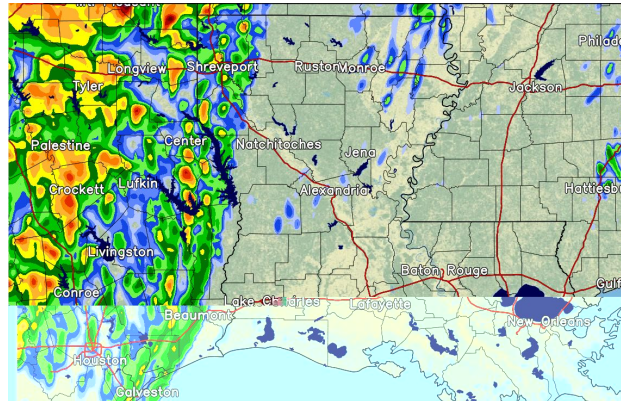
Timing: What Radar Could Look Like Tonight - Friday Morning



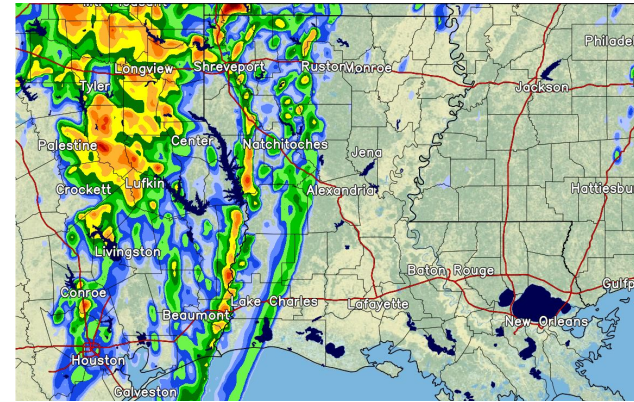
11pm Tonight



12am Friday



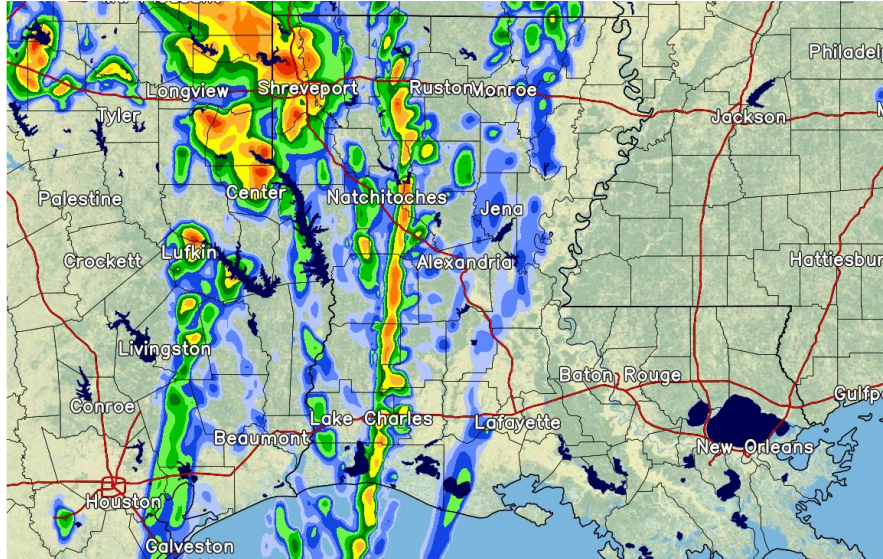
1am Friday



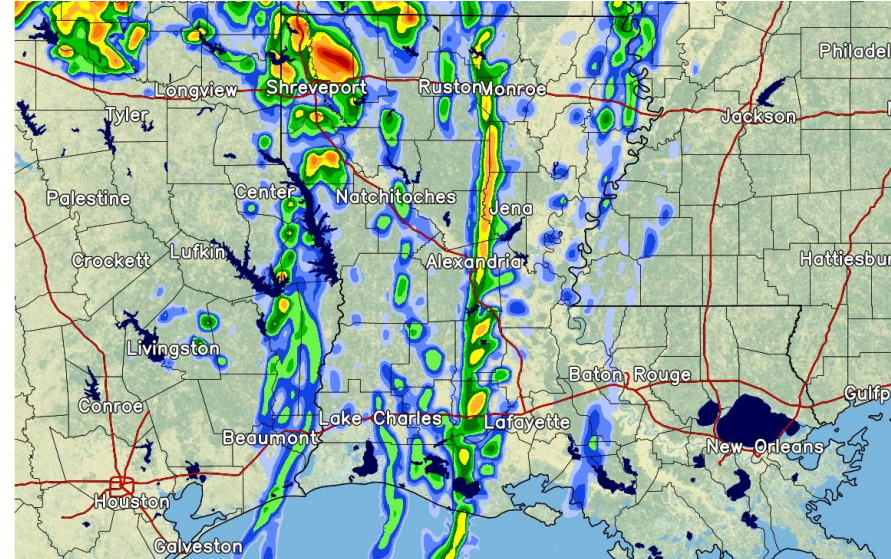
Timing: What Radar Could Look Like Tonight - Friday Morning



2am Friday



3am Friday



Forecast Wind and Wind Gusts This Evening

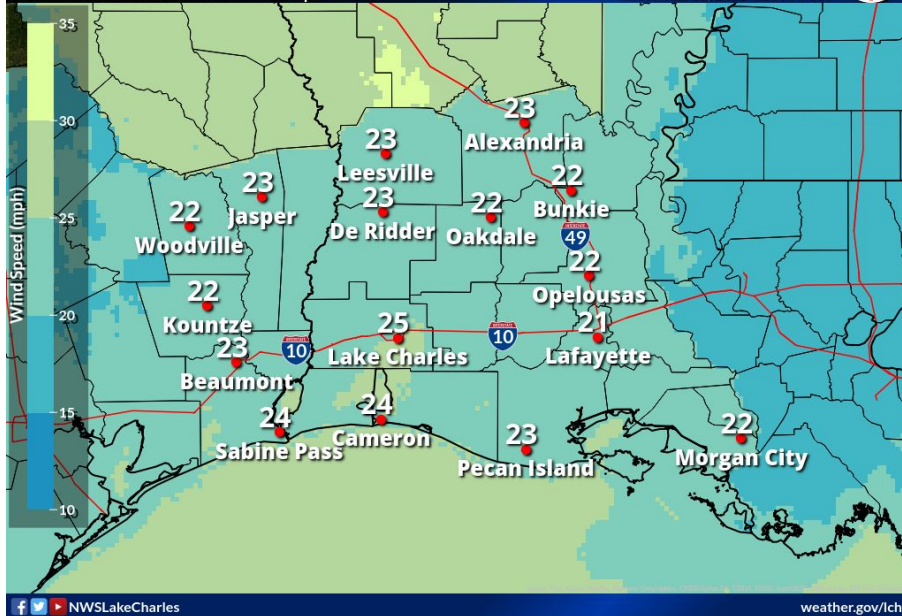


Thursday evening: South winds 20 to 25 mph with gusts 30 to 40 mph.

Sustained Winds 9 pm

South to Southwest between 20 and 25 mph.

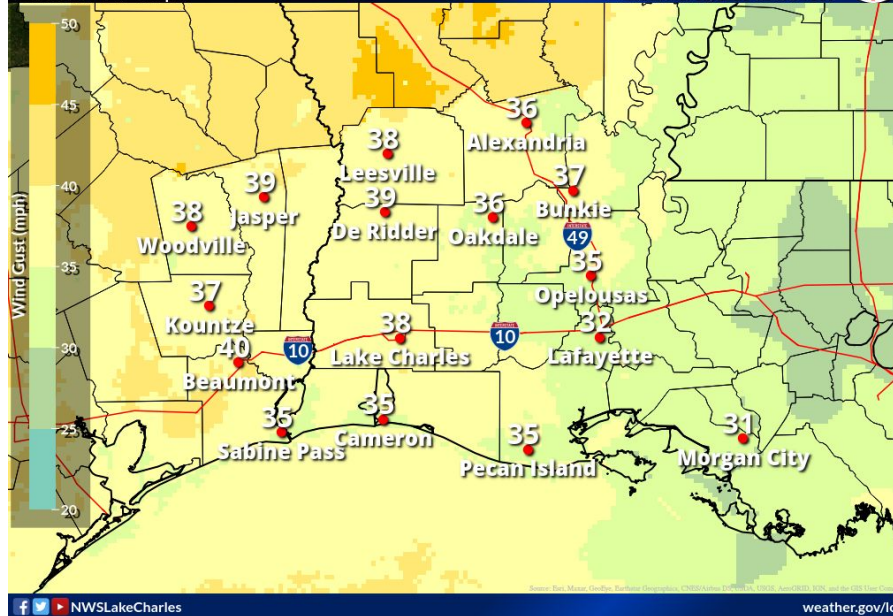
Weather Forecast Office
Lake Charles, LA
Issued Mar 02, 2023 4:56 AM CST



Wind Gusts 9 pm

Between 30 and 40 mph.

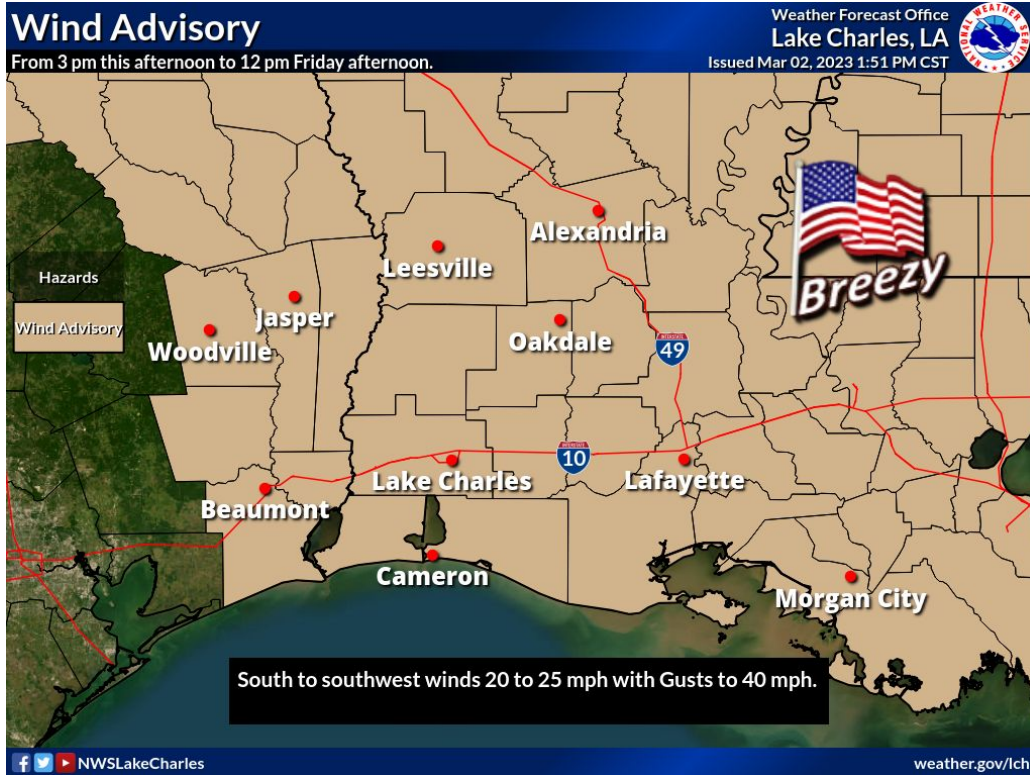
Weather Forecast Office
Lake Charles, LA
Issued Mar 02, 2023 4:54 AM CST



National Oceanic and
Atmospheric Administration

U.S. Department of Commerce

National Weather Service
Lake Charles, LA



Wind Advisories will be in effect from 3 pm this afternoon to 12pm Friday afternoon.

Winds ahead of the front will be southerly to southwesterly at 20 to 25 sustained with gusts to 40 mph.

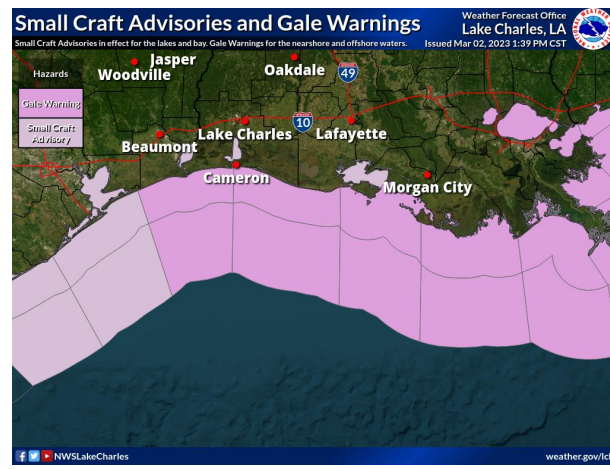
Behind the front, winds will be westerly near the same values before tapering down and shifting out of the northwest.



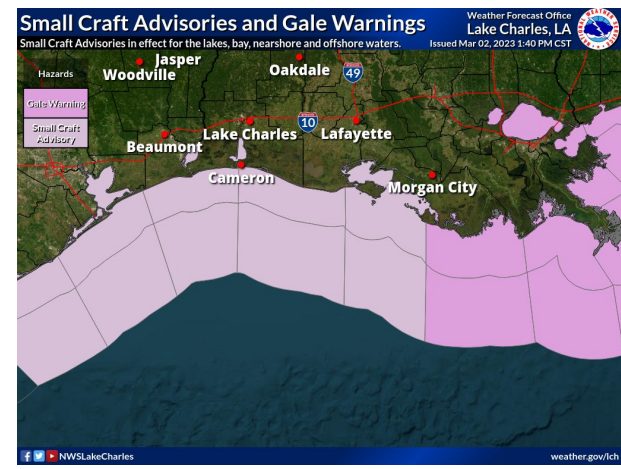
3pm today to 6pm tonight



6pm tonight to 6am tomorrow



6am to 12pm tomorrow



Small Craft Advisories for the lakes, bay, near and offshore waters.

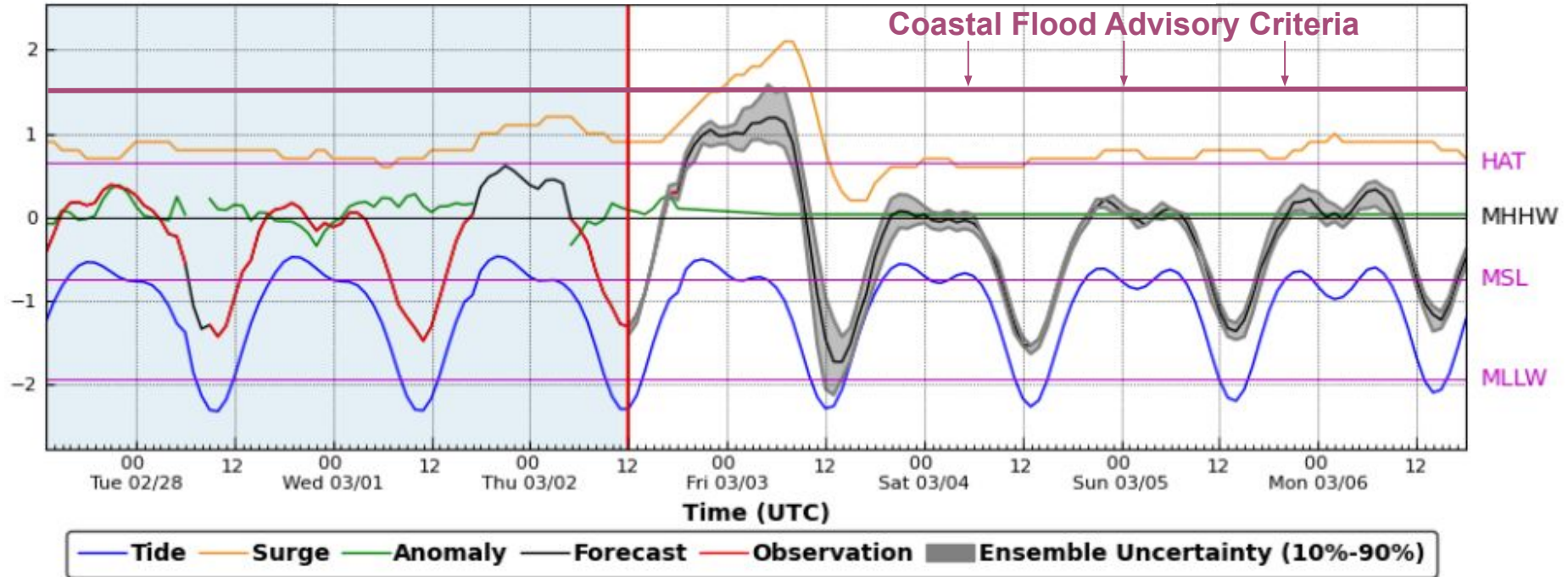
Small Craft Advisories for the lakes and bay. Gale Warnings for the near and offshore waters.

Small Craft Advisories for the lakes, bay, near and offshore waters.

Marine Weather - 10% Chance for Advisory Level Coastal Flooding



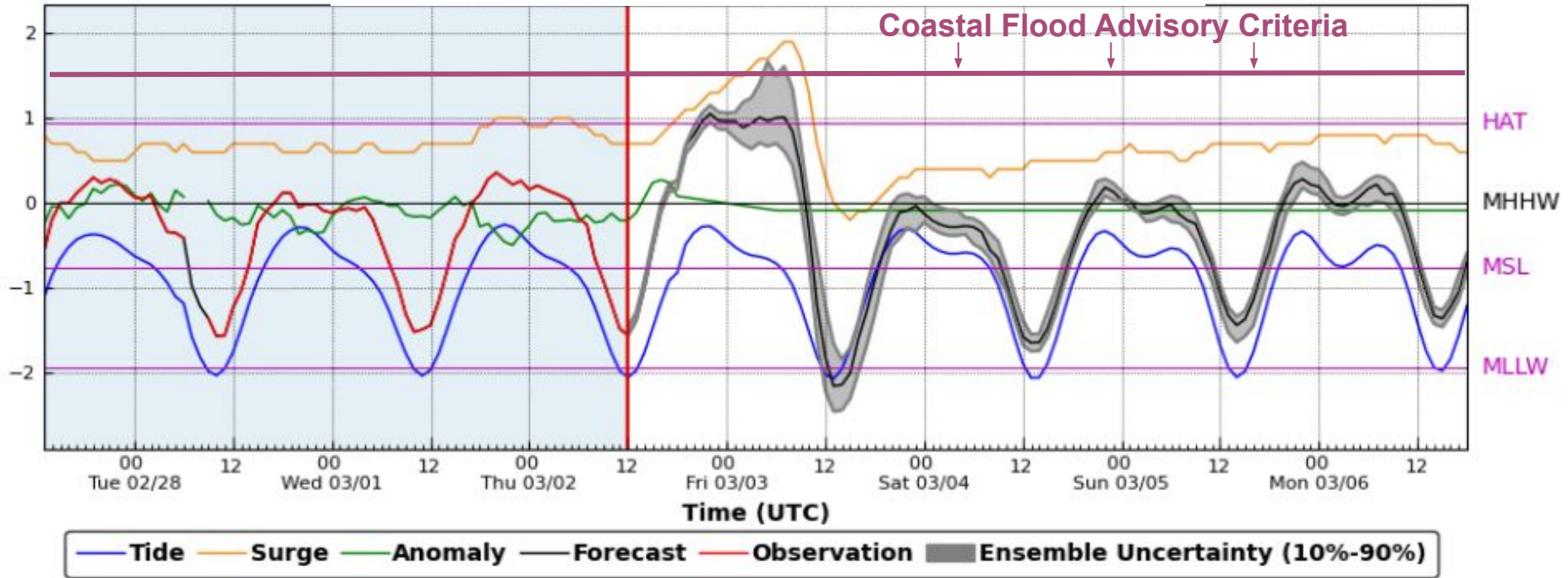
Calcasieu Pass, LA



Marine Weather - 10% Chance for Advisory Level Coastal Flooding



Sabine Pass, TX





Manufactured/Mobile Home Tornado Safety



TORNADO SAFETY



FOR MOBILE HOMES



Tornadoes Can Be Deadly

72% of all tornado fatalities occur in homes (permanent, mobile, manufactured, etc.)

54% of the housing fatalities occur in a mobile/manufactured home, even though mobile and manufactured home only make up **6%** of the US housing stock.

- If you are in a mobile home, it is **NOT** safe from a tornado, and you **MUST** seek an alternative shelter before storms hit.
- Make plans ahead of time to stay with friends or family who live in a sturdy building.
- Your last resort is to lie low and flat on your stomach with your hands over your head in a ditch or ravine.



Remain Weather Aware Thursday PM.

**Have Multiple Methods of Receiving
Watches and Warnings.**

**Wireless Emergency Alerts
Can Save Your Life**



weather.gov/tornado

**Test Your
NOAA Weather Radio**

It could save your life



weather.gov/tornado



**National Oceanic and
Atmospheric Administration**

U.S. Department of Commerce

**National Weather Service
Lake Charles, LA**



- NWS Lake Charles Phone Number: **(337) 477-5285 ext. 1**
- NWS Lake Charles Webpage: www.weather.gov/LCH
- Online Severe Weather Reporting: stormReport
- NWS Lake Charles Facebook www.facebook.com/NWSLakeCharles
- NWS Lake Charles Twitter twitter.com/NWSLakeCharles

Next Update: Later Today.

