

# West Texas/Southeastern New Mexico June 2017 Climate Summary



Midland/Odessa  
Texas



U.S. National Weather  
Service Midland, TX



@NWSMidland

## June 2017 Temperature, Precipitation, Humidity, and Wind Summary

**June 1<sup>st</sup>-15<sup>th</sup>:** The first day of June was cool and wet in parts of west Texas and southeastern New Mexico as thunderstorms developed due to an upper-level system positioned over the southwestern United States. Highest rainfall amounts on the 1<sup>st</sup> were 2.27" at Gail, TX and 1.12" at Mt. Locke, TX. Temperatures remained below normal through the first week of June with highs in the 80s to lower 90s and lows in the 50s and 60s. Thunderstorms occurred through the 8<sup>th</sup> as abundant moisture persisted across the region. A few thunderstorms became severe on the 2<sup>nd</sup> over Mitchell and Brewster Counties. On the 3<sup>rd</sup>, a line of storms produced 0.34" of rain at Midland Airpark, TX and 0.62" at Odessa, TX. Showers and storms were spotty on the 4<sup>th</sup>-5<sup>th</sup> but no severe weather was reported. Strong storms formed in southeastern New Mexico on the 6<sup>th</sup> and a Severe Thunderstorm Warning was issued for Lovington, NM. Storms on the 7<sup>th</sup>-8<sup>th</sup> were mainly confined to the higher terrain, with highest rainfall amounts of 1.61" at Hope, NM on the 7<sup>th</sup> and 0.37" at Alpine, TX on the 8<sup>th</sup>. A ridge of high pressure set up over the region by the 9<sup>th</sup>, resulting in above normal temperatures with highs over 100°F in some spots. The heat continued on the 10<sup>th</sup> and 11<sup>th</sup> and a Red Flag Warning was issued for the Guadalupe Mountains. Hottest temperatures included 107°F at Pecos, TX on the 10<sup>th</sup> and 105°F at Fort Stockton, TX on the 11<sup>th</sup>. A dryline sharpened up across west Texas on the 12<sup>th</sup> and intense surface heating provided instability for severe storms. An isolated severe storm took aim at Odessa and Midland, TX. Hail up to 2.00" was reported in Ector County and golf ball size hail with wind gusts over 60 mph occurred at Midland International Air & Spaceport (MAF). A similar pattern occurred on the 13<sup>th</sup> and 14<sup>th</sup>. On the 13<sup>th</sup>, severe storms passed just west of Odessa, TX and affected portions of Andrews, Martin, and Dawson Counties while a lone storm produced quarter size hail near Fort Stockton, TX. The atmosphere was quite unstable on the 14<sup>th</sup>. A severe storm impacted Odessa, TX with hail up to softball size (4.00" diameter) and wind gusts over 60 mph. The combination of wind and hail resulted in significant damage to buildings and vehicles, particularly across central and eastern parts of the city. Severe storms also moved through Brewster, Howard, Mitchell, and Scurry Counties. Rainfall totals on the 14<sup>th</sup> included 0.65" at Monahans, TX and 0.58" at MAF. Temperatures on the 15<sup>th</sup> were still well above normal and more severe storms brought large hail and damaging winds to Big Spring, Colorado City, Pecos, and Snyder, TX.

**June 16<sup>th</sup>-30<sup>th</sup>:** On the 16<sup>th</sup>, moisture retreated eastward and drier air entered the region. Temperatures increased well above normal and a Heat Advisory was issued for the area. Highest temperatures on the 16<sup>th</sup> were 115°F at Terlingua, TX and 113°F at Rio Grande Village, TX. MAF tied a record high of 109°F for the 16<sup>th</sup>. The heat continued on the 17<sup>th</sup> and an Excessive Heat Warning was issued for the entire coverage area. Many locations topped 110°F, with MAF recording a record high temperature of 111°F. A cold front approached on the 18<sup>th</sup>, cooling temperatures to near normal. Isolated storms formed along the front and a few brief "land-spout" tornadoes occurred near Big Lake, TX. Temperatures remained near normal on the 19<sup>th</sup> and 20<sup>th</sup> with isolated thunderstorms mainly in the mountains. High temperatures steadily increased from the 21<sup>st</sup>-23<sup>rd</sup> and Heat Advisories were issued each day for most of the area. The hottest temperatures occurred on the 23<sup>rd</sup>, including a record high temperature of 108°F at MAF. On the 23<sup>rd</sup>, severe storms formed ahead of a cold front across southeastern New Mexico and moved southeast into the Permian Basin. There were numerous wind damage reports in Hobbs, NM, Midland, TX, and near Loraine, TX. The highest recorded gusts were 74 mph at Midland Airpark, TX, 71 mph at Hobbs, NM, and 70 mph at Lovington, NM. Temperatures behind the front were at or below normal on the 24<sup>th</sup>-25<sup>th</sup>. A complex of storms developed in the early morning hours of the 26<sup>th</sup> and moved south through the Permian Basin. Heavy rainfall produced flash flooding along roadways and underpasses. Highest rainfall totals included 1.47" at MAF, and 1.24" at Andrews, TX. High temperatures on the 26<sup>th</sup> were 10°F below normal in some locations. Near normal temperatures remained through the 28<sup>th</sup> with highs mainly in the mid 90s with a few 100s and lows in the 60s and 70s. Thunderstorms were confined to the Davis Mountains and the Stockton Plateau. Drier air from the west entered the region on the 29<sup>th</sup> and 30<sup>th</sup>. Daytime highs were well into the 100s area-wide and Heat Advisories were issued both days. MAF tied a record high temperature of 106°F on the 30<sup>th</sup>. A few storms formed on the 30<sup>th</sup> but remained below severe limits.

Ominous shelf cloud approaching Odessa and Midland, TX from the west on June 3rd



Photo by Hunter Gregory



Photo by Semih Osem

Large tree uprooted in Odessa, TX on June 12th



Photo by Al Smith

Baseball size hail collected in Odessa, TX on June 14th



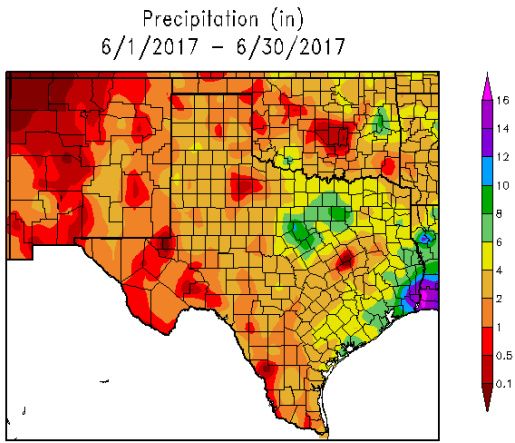
Photo by Giovanna Carrasco

Land-spout tornado near Big Lake, TX on June 18th



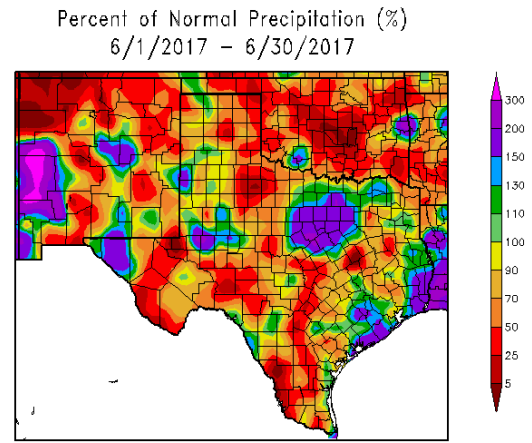
Damage to the Grand Buffet in Midland, TX on June 23rd

Photo by NWS damage survey team



Generated 7/2/2017 at HPRCC using provisional data.

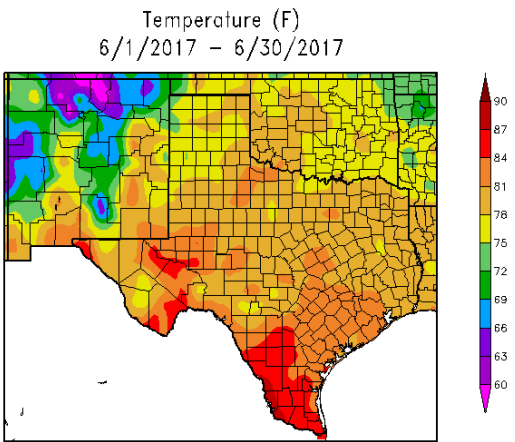
Regional Climate Centers



Generated 7/2/2017 at HPRCC using provisional data.

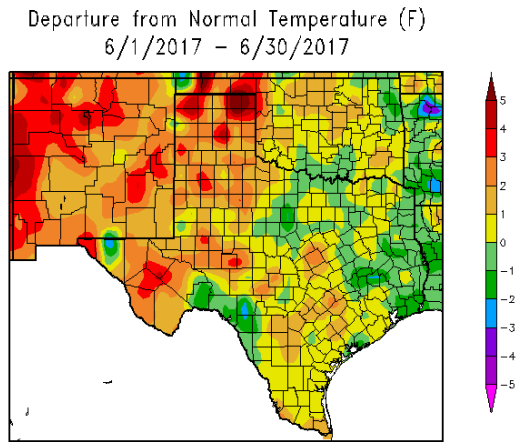
Regional Climate Centers

June precipitation in west Texas and southeastern New Mexico ranged from 0.00” in Imperial, TX and Kermit, TX to 4.58” in Big Spring, TX. The wettest regions were the central and eastern Permian Basin, especially Ector and Midland Counties. The driest areas were Loving, Ward, and Winkler Counties and in Presidio County along the Rio Grande.



Generated 7/2/2017 at HPRCC using provisional data.

Regional Climate Centers



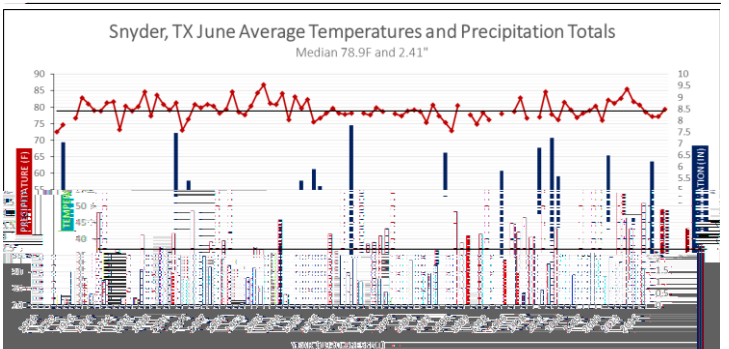
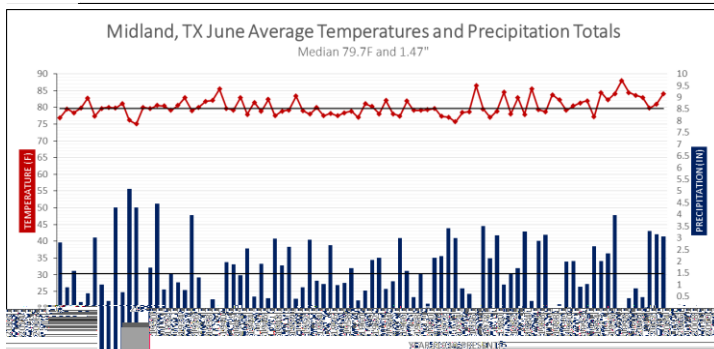
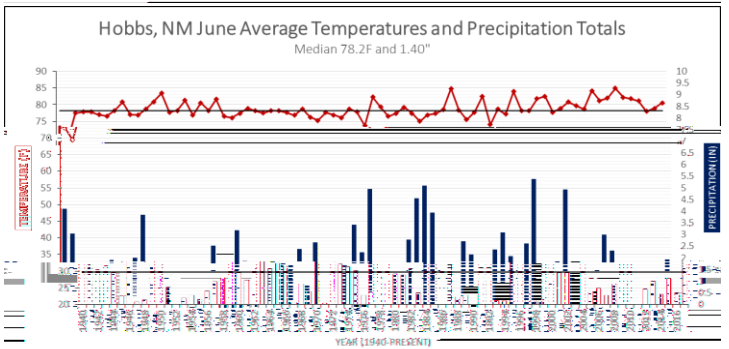
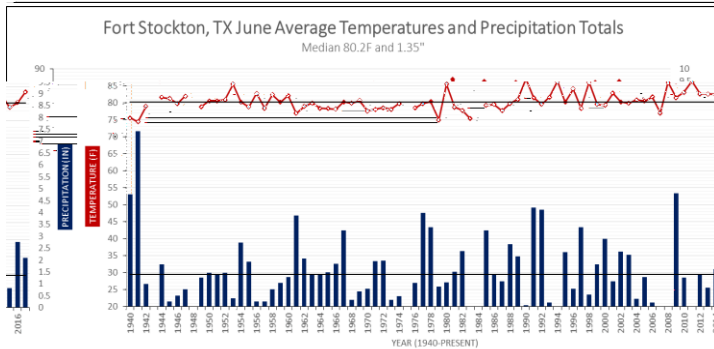
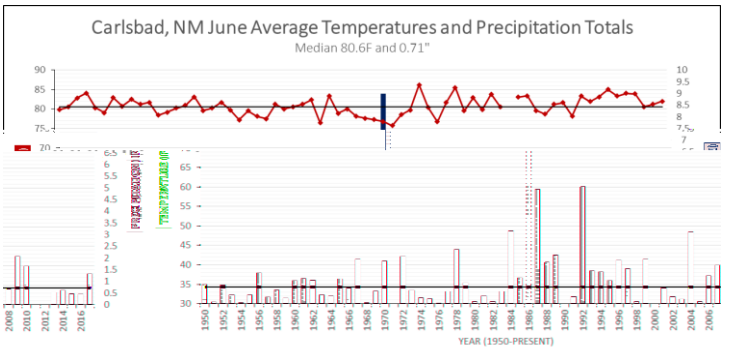
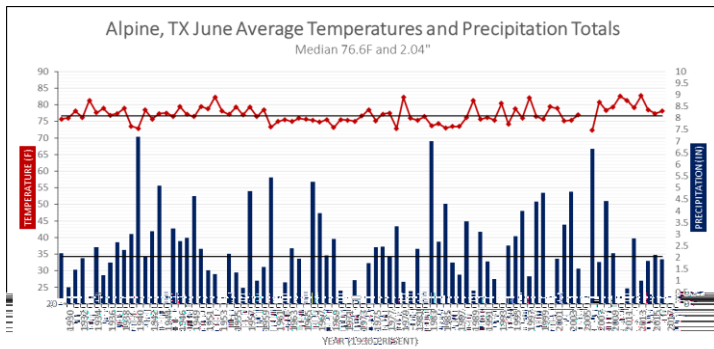
Generated 7/2/2017 at HPRCC using provisional data.

Regional Climate Centers

Average June temperatures ranged from near 66°F at Guadalupe Peak to around 90°F in Big Bend National Park. Below normal temperatures were present in Terrell County while parts of the northern Permian Basin were near normal. Temperatures were over 3°F above normal in Midland County and parts of Jeff Davis, Reeves, Pecos, and Presidio Counties.



Average June wind speeds ranged from 7 mph at Alpine, TX, Marfa, TX and Seminole, TX to 18 mph at Guadalupe Pass, TX. The highest wind gust was recorded at MAF. Average relative humidity values ranged from 42-75%.



Note: Each location has a slightly different period of record. Data gaps within each graph indicate missing data for those years.

June Temperature and Precipitation	Avg Temp (°F)	Departure from Avg (°F)	Temp Ranking (Period of Record)	Precip (In.)	Departure from Avg (In.)	Precip Ranking (Period of Record)
Alpine COOP	78.1	+1.10	T-28 <sup>th</sup> Warmest	1.93	-0.32	39 <sup>th</sup> Driest
Carlsbad Airport	82.0	+1.90	20 <sup>th</sup> Warmest	1.32	-0.43	T-45 <sup>th</sup> Driest
Fort Stockton COOP	83.5	+3.10	9 <sup>th</sup> Warmest	2.09	+0.49	21 <sup>st</sup> Wettest
Hobbs COOP	80.5	+2.30	T-20 <sup>th</sup> Warmest	1.94	+0.14	26 <sup>th</sup> Wettest
Midland International	84.0	+3.70	9 <sup>th</sup> Warmest	3.05	+1.25	14 <sup>th</sup> Wettest
Snyder COOP	79.3	+0.20	T-39 <sup>th</sup> Warmest	1.71	-1.66	29 <sup>th</sup> Driest

The graphs above show June temperature and precipitation data for six individual weather stations at select cities. All six locations were warmer than average. MAF had the warmest average temperature at 84.0°F which was 3.7°F above normal. Snyder, TX had an average temperature that was closest to normal. Fort Stockton, TX and MAF experienced their 9<sup>th</sup> warmest June on record while both Carlsbad and Hobbs, NM were ranked 20<sup>th</sup> warmest. Alpine and Snyder, TX had no significant ranking inside the top 20 for warmth. Three out of six locations had above normal precipitation. The highest rainfall total was 3.05" at MAF resulting in the 14<sup>th</sup> wettest June on record. Fort Stockton, TX and Hobbs, NM were both above normal for precipitation but fell outside the top 20 ranking. Carlsbad, NM received the least rainfall compared to the other five locations with a total of 1.32". Alpine, TX, Carlsbad, NM and Snyder, TX recorded below normal rainfall and Snyder, TX received the least precipitation compared to average. In summary, these six cities were warmer than average and precipitation was much more variable.