

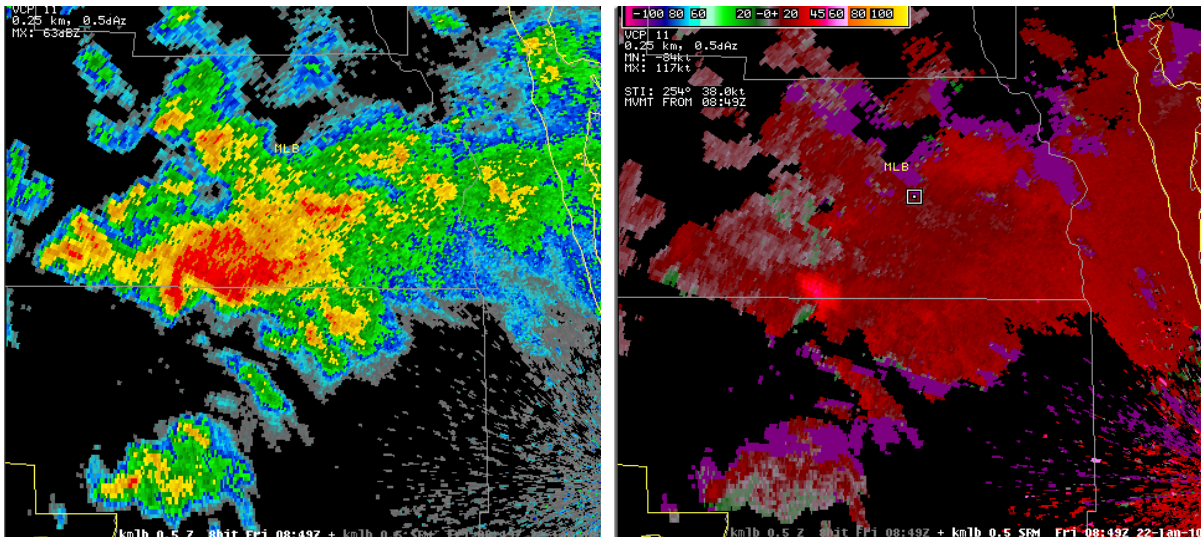
Tornado and Wind Damage January 21-22, 2010

Tornado and Wind Damage from Squall Line

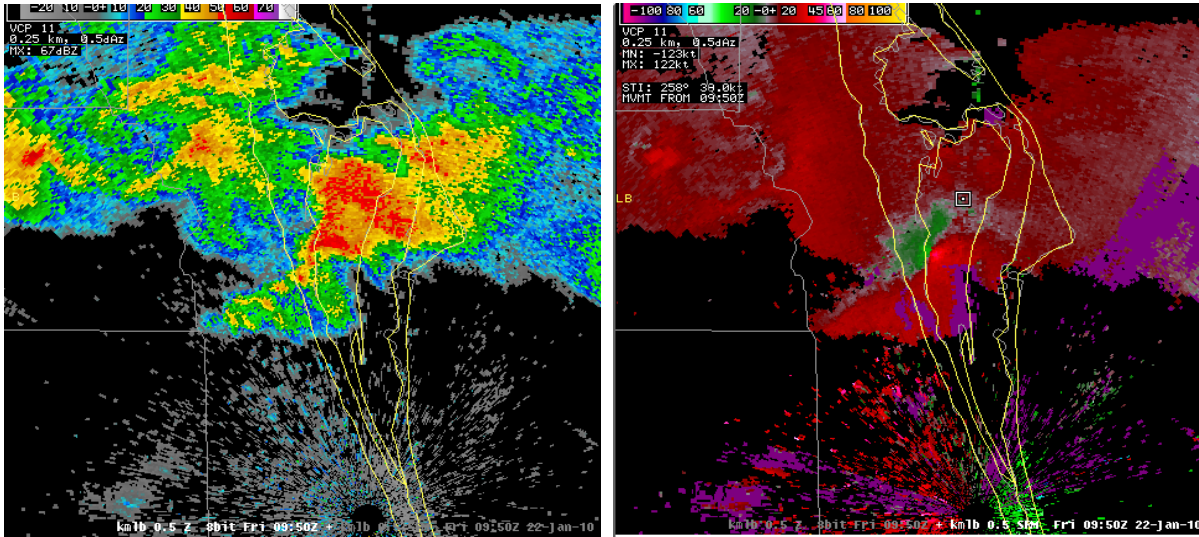
January 21-22, 2010

A trough of low pressure oriented from W-E drifted south from northern Florida on Thursday 1/21 with a squall line developing over north Florida. Discrete cells developed south of this boundary in the mid afternoon and pushed quickly across east central Florida in the late afternoon and early evening hours of Thursday. Many of the cells exhibited rotation in the highly sheared environment, and a funnel cloud was observed near Ormond beach. No touchdowns were reported Thursday evening; however, wind damage occurred in Deland with strong thunderstorm gusts. Storm activity in east central Florida decreased during the mid-evening, but then additional storm development occurred during the pre-dawn hours of Friday 1/22 as the boundary sagged into east central Florida. Wind damage reports were received in the pre-dawn hours from near the Orange-Osceola county line into Brevard county where a tornado occurred shortly after sunrise.

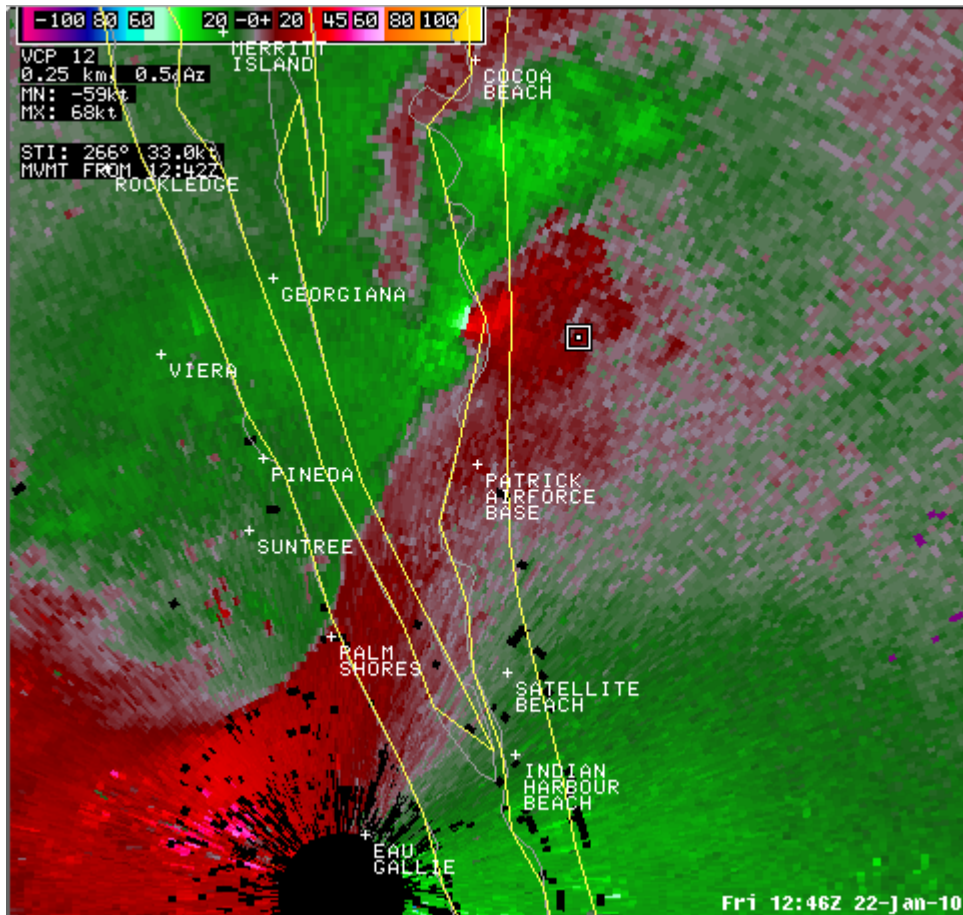
NWS MLB radar images at 349 am EST near the Orange-Osceola county line:



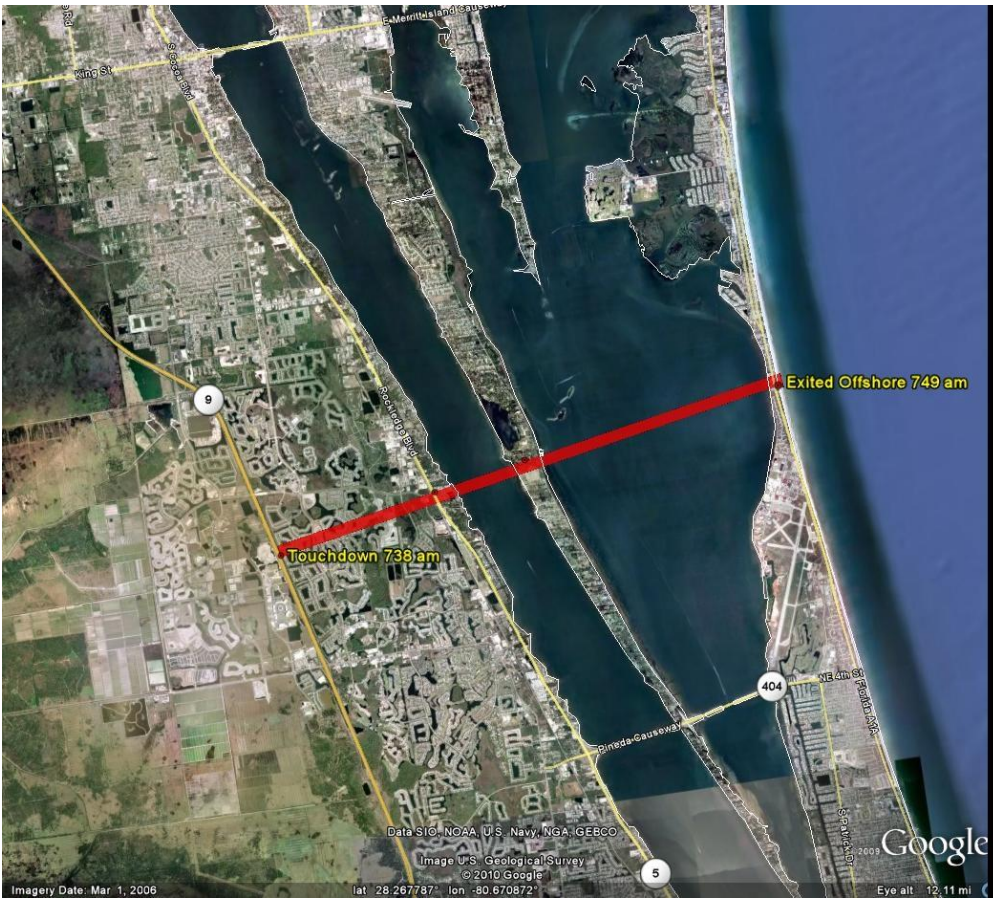
NWS MLB radar images at 450 am EST over northern Brevard county:



NWS MLB radar storm relative velocity at 746 am EST as the tornadic cell approached the barrier island from the Banana River:



Approximate Path of Brevard County Tornado (Viera to S. Merritt Island and S of Cocoa Beach):



Damage photos (courtesy Florida Today):

Overtaken semi-truck on I-95 due to heavy rain and poor visibility in earlier storms:



EF-0 tornado damage in the Crane Creek Subdivision in Viera *(courtesy Florida Today):*



EF-0 tornado damage in the Capron Ridge Subdivision in Viera *(courtesy Florida Today):*





EF-0 tornado damage in River Way subdivision in Viera, near US1 and Viera Blvd (courtesy Florida Today):



EF-0 tornado damage south of Cocoa Beach near A1A and 36th Street South (courtesy Florida Today):





Tornado Warnings issued for Osecola and Brevard County storm that produced an EF0 Tornado:

000
WFUS52 KMLB 221138
TORMLB
FLC009-097-221215-
/O.NEW.KMLB.TO.W.0007.100122T1138Z-100122T1215Z/

BULLETIN - EAS ACTIVATION REQUESTED
TORNADO WARNING
NATIONAL WEATHER SERVICE MELBOURNE FL
638 AM EST FRI JAN 22 2010

THE NATIONAL WEATHER SERVICE IN MELBOURNE HAS ISSUED A

- * TORNADO WARNING FOR...
CENTRAL BREVARD COUNTY IN FLORIDA...
THIS INCLUDES THE CITIES OF...MERRITT ISLAND...ROCKLEDGE...LONE
CABBAGE FISH CAMP...
NORTHEASTERN OSCEOLA COUNTY IN FLORIDA...
THIS INCLUDES THE CITY OF NARCOOSSEE...
- * UNTIL 715 AM EST.
- * AT 635 AM EST...NATIONAL WEATHER SERVICE DOPPLER RADAR INDICATED A
SEVERE THUNDERSTORM CAPABLE OF PRODUCING A TORNADO NEAR
NARCOOSSEE...MOVING EAST AT 35 MPH.
- * OTHER LOCATIONS IN THE WARNING INCLUDE BUT ARE NOT LIMITED TO
HARMONY...VIERA AND SUNTREE

THE IMMEDIATE DANGER OF A TORNADO IS HIGH. PEOPLE IN THE PATH OF THIS
DEVELOPING TORNADO ARE URGED TO QUICKLY PREPARE FOR ITS APPROACH.
THIS IS A DANGEROUS SITUATION! ACT NOW...SECONDS CAN SAVE LIVES!

PRECAUTIONARY/PREPAREDNESS ACTIONS...

IF YOU ARE IN THE PATH OF A TORNADO...THE SAFEST PLACE IS IN A STRONG
BUILDING ON THE LOWEST FLOOR. MOVE TO AN INTERIOR ROOM SUCH AS A
BATHROOM OR CLOSET. KEEP AWAY FROM WINDOWS. IF NECESSARY...GET UNDER
A WORKBENCH OR OTHER PIECE OF STURDY FURNITURE. USE BLANKETS OR
PILLOWS TO COVER YOUR BODY. ABANDON YOUR MOBILE HOME OR RV FOR MORE
SUBSTANTIAL SHELTER. IF YOU ARE CAUGHT OUTSIDE...GET INTO AN
UNFLOODED DITCH OR LOW SPOT AND COVER YOUR HEAD WITH YOUR HANDS AND
ARMS. ABANDON YOUR VEHICLE IF THE TORNADO IS NEARBY.

THE TORNADO WILL LIKELY BE WRAPPED IN HEAVY RAIN MAKING IT DIFFICULT TO SEE. BE SMART AND REACT NOW!

&&

LAT...LON 2814 8060 2816 8063 2814 8063 2817 8127
2834 8126 2834 8088 2837 8088 2838 8073
2834 8072 2838 8072 2838 8066 2832 8065
2827 8066 2823 8064 2823 8062 2820 8062
TIME...MOT...LOC 1137Z 272DEG 30KT 2826 8116

\$\$

67
000
WFUS52 KMLB 221234
TORMLB
FLC009-221300-
/O.NEW.KMLB.TO.W.0008.100122T1234Z-100122T1300Z/

BULLETIN - EAS ACTIVATION REQUESTED
TORNADO WARNING
NATIONAL WEATHER SERVICE MELBOURNE FL
734 AM EST FRI JAN 22 2010

THE NATIONAL WEATHER SERVICE IN MELBOURNE HAS ISSUED A

* TORNADO WARNING FOR...
CENTRAL BREVARD COUNTY IN FLORIDA...
THIS INCLUDES THE CITIES OF...SATELLITE BEACH...PATRICK AIRFORCE
BASE...

* UNTIL 800 AM EST.

* AT 734 AM EST...NATIONAL WEATHER SERVICE METEOROLOGISTS DETECTED A
SEVERE THUNDERSTORM CAPABLE OF PRODUCING A TORNADO NEAR VIERA...OR
ABOUT 7 MILES SOUTH OF ROCKLEDGE...MOVING EAST AT 25 MPH.

* OTHER LOCATIONS IN THE WARNING INCLUDE BUT ARE NOT LIMITED TO
SUNTREE AND INDIAN HARBOUR BEACH

THE IMMEDIATE DANGER OF A TORNADO IS HIGH. PEOPLE IN THE PATH OF THIS
DEVELOPING TORNADO ARE URGED TO QUICKLY PREPARE FOR ITS APPROACH.
THIS IS A DANGEROUS SITUATION! ACT NOW AS SECONDS CAN SAVE LIVES!

PRECAUTIONARY/PREPAREDNESS ACTIONS...

THE SAFEST PLACE TO BE DURING A TORNADO IS IN A STRONG BUILDING ON
THE LOWEST FLOOR...IN AN INTERIOR ROOM SUCH AS A BATHROOM OR CLOSET.
KEEP AWAY FROM WINDOWS. GET UNDER A WORKBENCH OR OTHER PIECE OF
STURDY FURNITURE. USE BLANKETS OR PILLOWS TO COVER YOUR BODY.

EVACUATE MOBILE HOMES OR VEHICLES FOR MORE SUBSTANTIAL SHELTER. IF NO
SHELTER IS AVAILABLE...LIE FLAT IN THE NEAREST DITCH OR OTHER LOW
SPOT AND COVER YOUR HEAD WITH YOUR HANDS.

&&

LAT...LON 2812 8060 2816 8063 2814 8062 2813 8062
2814 8085 2832 8084 2831 8070 2828 8069
2831 8069 2831 8065 2829 8066 2823 8064
2826 8061 2831 8062 2831 8059 2812 8058

TIME...MOT...LOC 1234Z 272DEG 23KT 2822 8074

\$\$

JP

National Weather Service Damage Survey results:

PUBLIC INFORMATION STATEMENT
NATIONAL WEATHER SERVICE MELBOURNE FL
752 PM EST FRI JAN 22 2010

...A NATIONAL WEATHER SERVICE DAMAGE SURVEY WAS CONDUCTED TODAY (GROUND SURVEY ONLY)...AND RADAR DATA WERE REVIEWED FOR THE SEVERE WEATHER EVENT WHICH IMPACTED CENTRAL BREVARD COUNTY DURING THE MORNING OF JANUARY 22 2010...

THE PRELIMINARY DAMAGE ASSESSMENT OF THE EVENT FOLLOWS...

A WEAK TORNADO INITIALLY TOUCHED DOWN IN THE TOWN OF VIERA IN BREVARD COUNTY JUST EAST OF INTERSTATE 95 AT 738 AM EST. A CONTINUOUS TORNADO DAMAGE PATH WAS OBSERVED TO U.S. ROUTE 1 AT THE INDIAN RIVER...THEN CONTINUED ACROSS CENTRAL MERRITT ISLAND FROM THE INDIAN RIVER TO THE BANANA RIVER... AND ACROSS THE BARRIER ISLAND IN COCOA BEACH FROM THE BANANA RIVER TO THE ATLANTIC. THE TORNADO LIKELY REMAINED ON THE GROUND ALONG THIS ENTIRE 7.3 MILE LONG TRACK...CROSSING THE INDIAN RIVER...BANANA RIVER AND THEN EXITING INTO THE ATLANTIC (AT 748 AM EST) AS A TORNADIC WATERSPOUT.

DAMAGE ALONG THE TRACK WAS CONSISTENT WITH A LOW-END EF0 TORNADO ON THE ENHANCED FUJITA TORNADO SCALE. BASED ON DAMAGE TO STRUCTURES AND TREES ALONG THE PATH...MAXIMUM WINDS WERE ESTIMATED AT 65 TO 75 MPH.

INITIAL TORNADO DAMAGE OCCURRED IN VIERA JUST EAST OF INTERSTATE 95 IN THE AREA OF JACQUES DRIVE...LIONEL DRIVE...AND CRANE CREEK BOULEVARD. THE DAMAGE PATH CONTINUED TO U.S. ROUTE 1 AT VIERA BOULEVARD...IMPACTING THE AREA NEAR THE RIVER WAY CONDOS. DAMAGE OCCURRED TO 143 HOMES IN VIERA. STRUCTURAL DAMAGE TO HOMES WAS MOSTLY MINOR...ALTHOUGH MANY EXPERIENCED DAMAGED OR DESTROYED POOL SCREEN ENCLOSURES. NUMEROUS TREES WERE TOPPLED OR SNAPPED.

DAMAGE ON MERRITT ISLAND AFFECTED THE AREA NEAR HACIENDA BOULEVARD... DEL SOL DRIVE AND SOUTH TROPICAL TRAIL. MOSTLY MINOR DAMAGE OCCURRED TO SIX HOMES. NUMEROUS LARGE TREES WERE TOPPLED OR SNAPPED.

DAMAGE ON THE BARRIER ISLAND AT COCOA BEACH IMPACTED THE AREA NEAR HIGHWAY A1A AND 36TH STREET SOUTH. MINOR DAMAGE WAS SUSTAINED BY SEVERAL UNITS OF AN APARTMENT COMPLEX AND SEVERAL VEHICLES WERE DAMAGED.

SOME MINOR WIND DAMAGE WAS ALSO NOTED ALONG THE TRACK OF THE STORM TO THE WEST OF INTERSTATE 95 FOR SEVERAL MILES. WHILE THIS DAMAGE WAS NOT CONSISTENT WITH A TORNADO...WIND GUSTS OF 50 TO 60 MPH WERE LIKELY EXPERIENCED FROM THE AREA OF BRUNOT CIRCLE IN VIERA TO THE GOVERNMENT CENTER COMPLEX NEAR JUDGE FRAN JAMIESON WAY AND STADIUM PARKWAY TO INTERSTATE 95. DAMAGE WITHIN THIS AREA CONSISTED OF SEVERAL TOPPLED NEWLY PLANTED PALM TREES...DOWNED FENCES AND DAMAGE TO A FEW POOL SCREEN ENCLOSURES.

CONTINUOUS TORNADO LENGTH: 7.3 MILES
TOUCHDOWN LOCATION/TIME: 28.2537N 80.7246W / 738 AM EST
EXIT INTO ATLANTIC/TIME: 28.2728N 80.6059W / 749 AM EST
TORNADO WIDTH: 0.15 MILES (265 YARDS)
TORNADO STRENGTH: EF0 (LOW END, ESTIMATED 65-75 MPH)

FOR A COMPLETE SUMMARY OF THE EVENT...PLEASE SEE THE NWS MELBOURNE
WEB-PAGE AT: [HTTP://SRH.NOAA.GOV/MLB](http://SRH.NOAA.GOV/MLB)

THE INFORMATION ON THE WEB-SITE WILL BE UPDATED OVER THE NEXT SEVERAL
DAYS AS ADDITIONAL INFORMATION BECOMES AVAILABLE.

\$\$

SPRATT

last page update: 1010 am 1/26/10