

The Groundhog Day Tornado Outbreak

February 2, 2007

Synopsis:

A deadly tornado event occurred across the NWS Melbourne County Warning Area within Lake and Volusia Counties during the early morning hours of February 2, 2007. A discontinuous swath of damage was observed from the town of Lady Lake (Lake County) to New Smyrna Beach (Volusia County) - a distance of over 70 miles. A total of 21 fatalities occurred within Lake County.

Synoptic & Mesoscale Situation:

East Central Florida was located in the warm sector ahead of an advancing cold front. Large scale lift was supported by a very strong jet aloft, with strong vertical shear evident from the surface to aloft, conducive for rotating thunderstorms and tornadoes. Instability increased overnight with temperatures and dew points increasing through the pre-dawn hours. [A moderate threat of tornadoes was indicated within the Hazardous Weather Outlook.](#)

A long-tracked supercell thunderstorm traveled from Sumter County to the coastal waters of Volusia County during the early morning hours of February 2, 2007. Three tornadoes touched down along this track.

Damage Surveys:

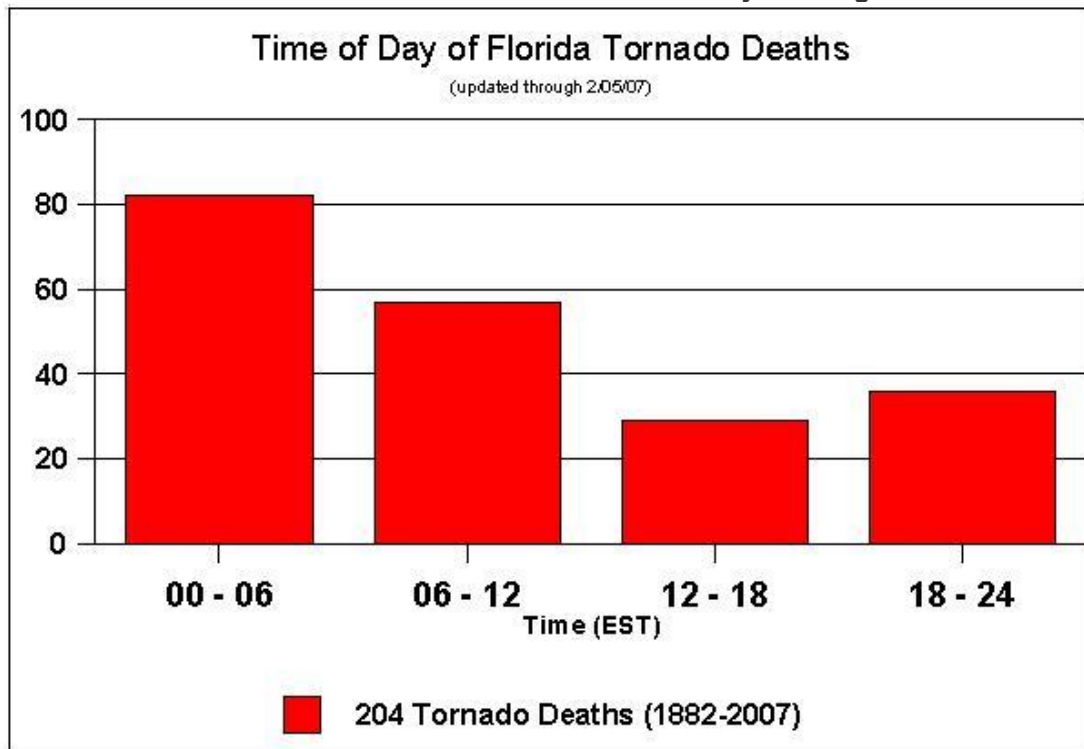
[The first tornado](#) began near Wildwood in Sumter County at 308 am and crossed into Lake County, lifting east of Lady Lake at 325 am. NWS Melbourne issued a Tornado Warning for Lake County at 306 AM. Post storm surveys indicated the tornado reached a peak intensity of EF-3 (155-160 mph) and had a track length of 16.5 miles. Eight fatalities were associated with the tornado.

[The second tornado](#) touched down in rural Lake County at 337 am and impacted the Lake Mack area at 348 am before crossing into Volusia County and affecting Deland at 402 am, then lifted east of Interstate 4 at 410 am. NWS Melbourne issued a Tornado Warning for Volusia County at 352 AM. Post storm surveys indicated the tornado reached a peak intensity of EF-3 (160-165 mph) and had a track length of 26 miles. Thirteen fatalities occurred in association with this tornado.

[The third tornado](#) formed in eastern Volusia County to the east of Interstate 95 at 422 am and remained on the ground until 425 am when it reached the intracoastal waterway in New Smyrna Beach. Post storm surveys indicated the tornado reached a peak intensity of EF-1 (100-105 mph) and had a track length of 3 miles.

Tornado scenarios such as this are classified as very dangerous, especially due to the threat of tornado occurrence during overnight hours when most individuals are asleep. [A NOAA Weather Radio containing an alarm feature can be a life-saving device in these situations.](#)

Most tornado deaths in Florida occur in the early morning hours.





Overview of tracks for tornadoes 1, 2 and 3

Additional Maps:

[Tornado 1 is the Villages/Lady Lake tornado.](#)

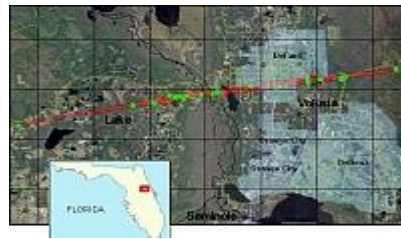
[Tornado 2 is the Lake Mack/Deland tornado.](#)

[Tornado 3 is the New Smyrna Beach tornado.](#)



Tornado 1

[\(Click for information & damage photos\)](#)



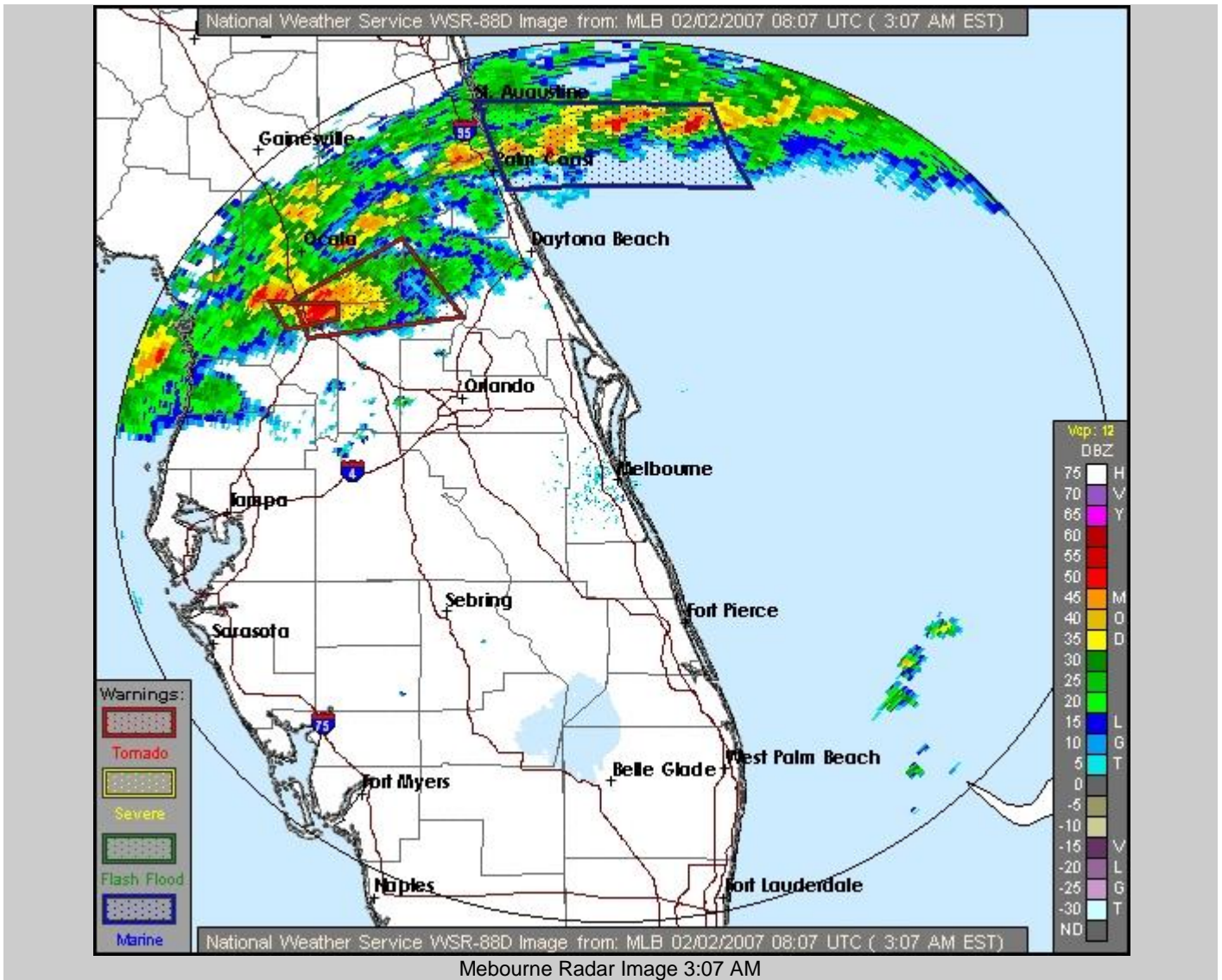
Tornado 2

[\(Click for information & damage photos\)](#)



Tornado 3

[\(Click for information & damage photos\)](#)



Meteorological Imagery:



[Full Radar Loop](#)
11PM-7AM
(11MB)

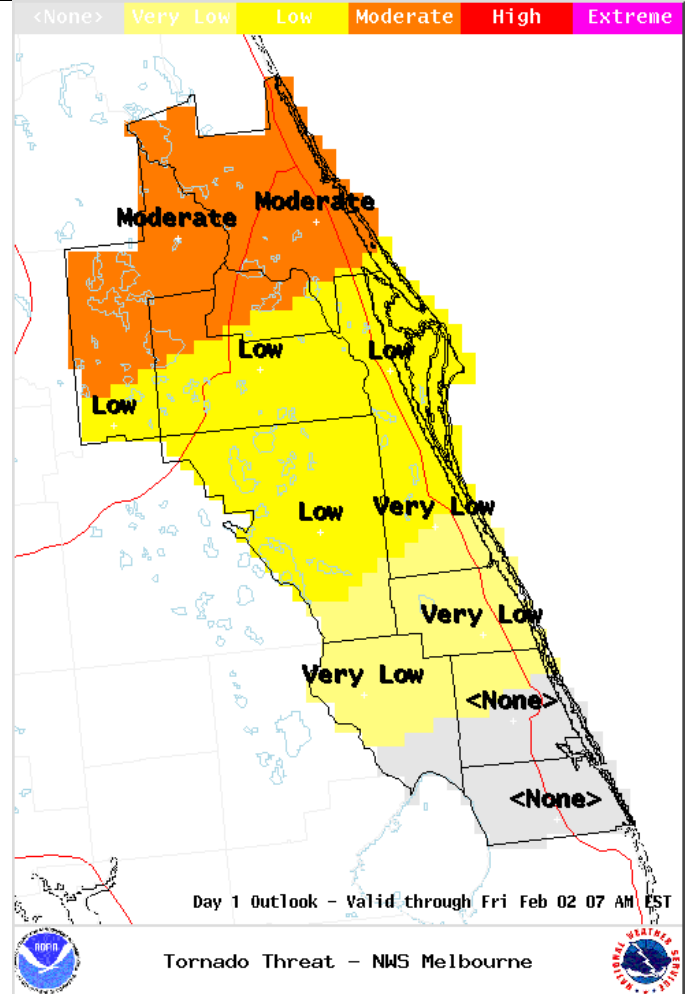


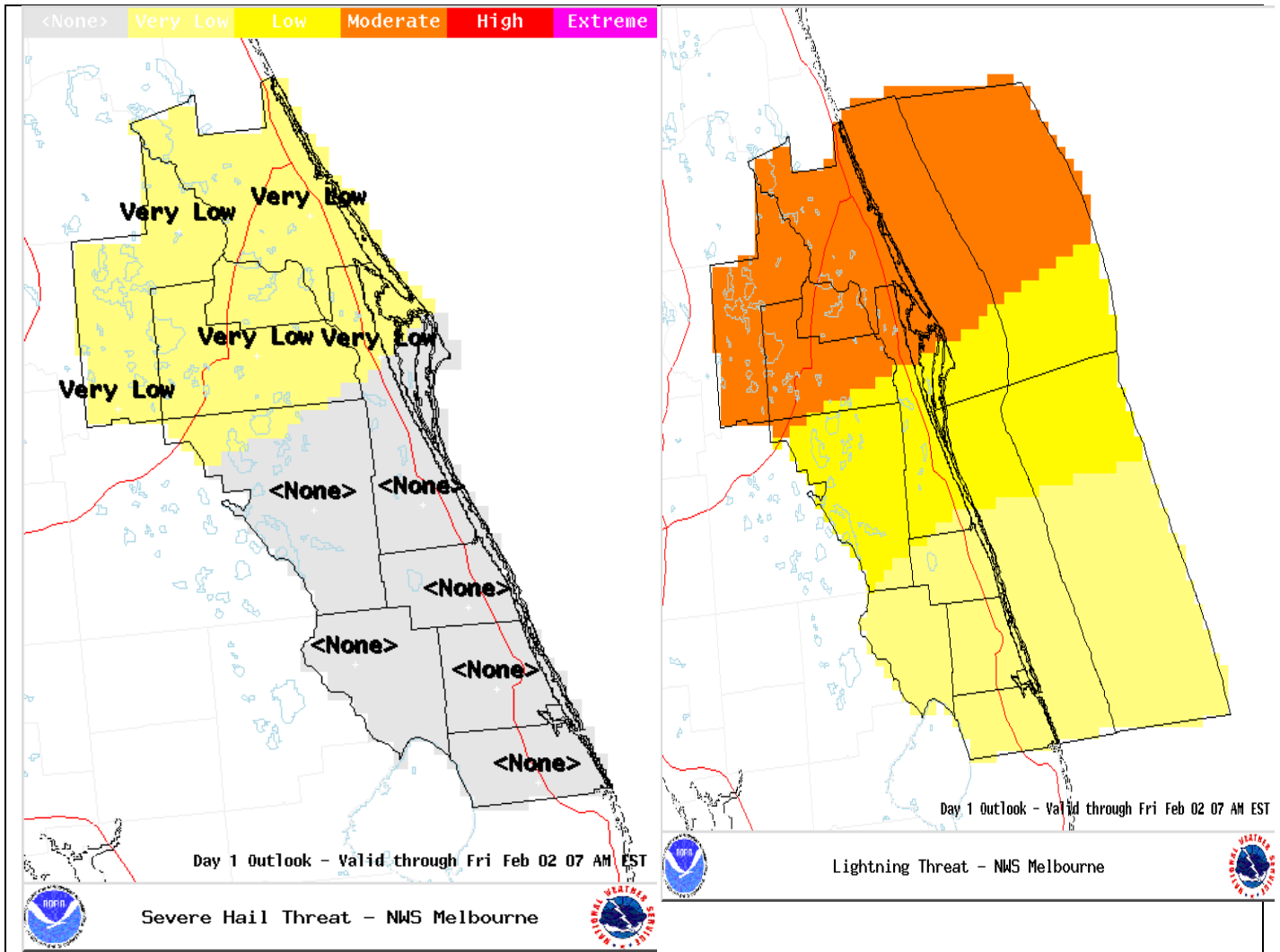
[Radar Loop](#)
2AM-6AM
(5MB)

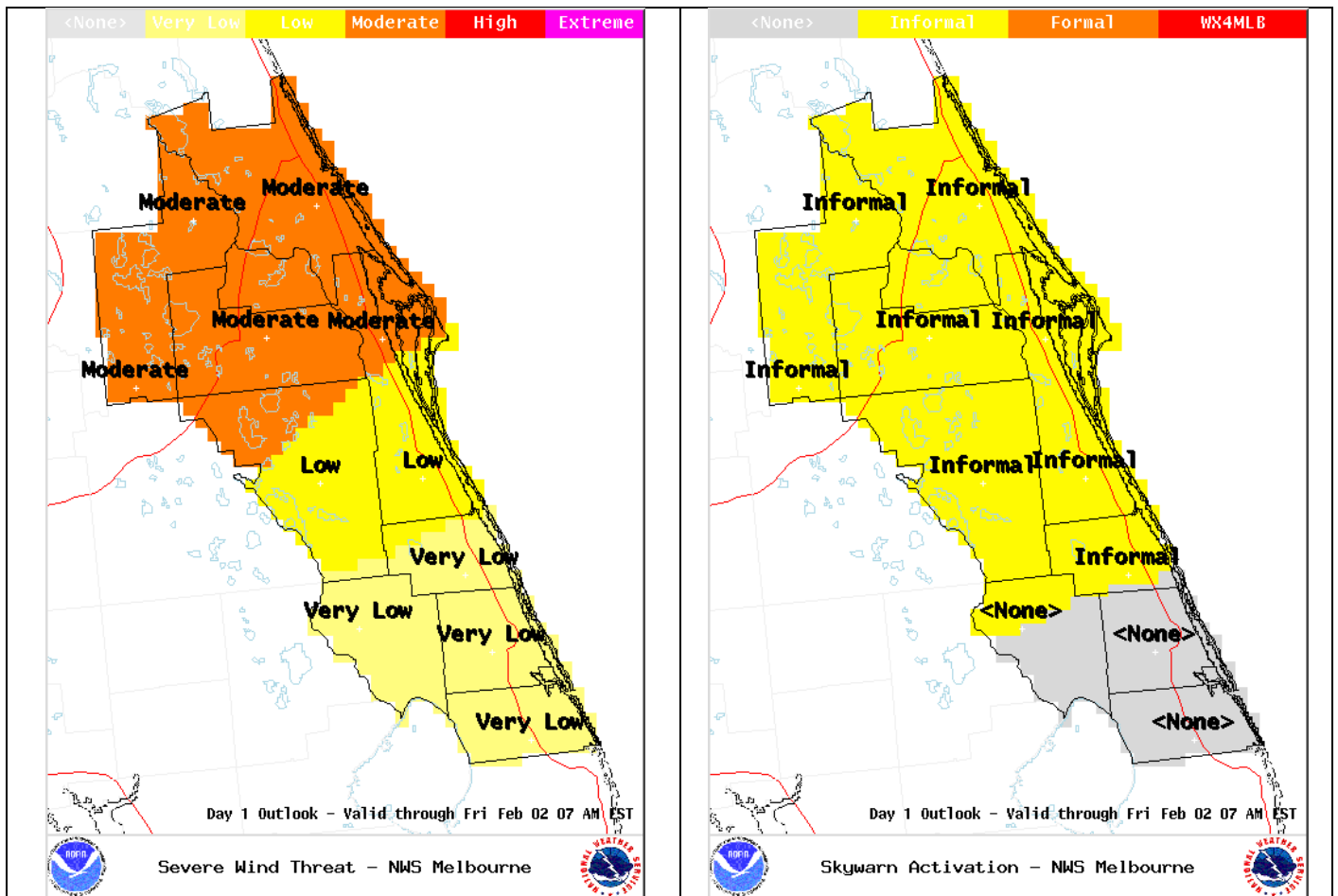


[Storm Relative Motion](#)
2:58AM - 4:31AM
(5MB)

SKYWARN
<input type="checkbox"/> Activation
THUNDERSTORM
<input type="checkbox"/> Lightning
<input type="checkbox"/> Tornado
<input type="checkbox"/> Severe Hail
<input type="checkbox"/> Severe Wind
HEAVY RAIN
<input type="checkbox"/> (Flash) Flood
SEASONAL
<input type="checkbox"/> Excessive Heat
<input type="checkbox"/> Excessive Cold
<input type="checkbox"/> High Wind
<input type="checkbox"/> Dense Fog / Smoke
<input type="checkbox"/> Fire Weather
COASTAL / MARINE
<input type="checkbox"/> Rip Current
<input type="checkbox"/> Coastal Flood
<input type="checkbox"/> Waterspout
<input type="checkbox"/> Wind and Sea
<input type="checkbox"/> Thunderstorm Gust
RIVER
<input type="checkbox"/> River Flood
TROPICAL
<input type="checkbox"/> Tropical Cyclone
Threat Level Scale
<input type="checkbox"/> Extreme
<input type="checkbox"/> High
<input type="checkbox"/> Moderate
<input type="checkbox"/> Low
<input type="checkbox"/> Very Low
<input type="checkbox"/> Non-Threatening







Products Issued:

[Graphical Hazardous Weather Outlook issued 5:00 PM on the 1st :](#)

[TORNADO](#) | [HAIL](#) | [LIGHTNING](#) | [WIND](#) | [SKYWARN](#) (Other categories omitted)

[Text Hazardous Weather Outlook issued at 4:57 PM on the 1st.](#)

[Tornado Warning issued at 3:06 AM](#) (Lake County)

[Severe Weather Statement issued at 3:17 AM](#) (Lake County)

[Severe Weather Statement issued at 3:27 AM](#) (Lake County)

[Severe Weather Statement issued at 3:36 AM](#) (Lake County)

[Severe Weather Statement issued - at 3:43 AM](#) (Lake County)

[Severe Weather Statement issued at 3:48 AM](#) (Lake County)

[Tornado Warning issued at 3:52 AM](#) (Volusia County)

[Severe Weather Statement issued at 4:00 AM](#) (Lake County)

[Severe Weather Statement issued at 4:02 AM](#) (Volusia County)

[Tornado Warning issued at 4:14 AM](#) (Volusia County)

[Severe Weather Statement issued at 4:20 AM](#) (Lake County)

[Severe Weather Statement issued at 4:31](#)(Lake County)

[Local Storm Report issued 5:13 AM](#)

[Local Storm Report issued 5:40 AM](#)

[Local Storm Report issued 6:09 AM](#)

[Local Storm Report issued 7:27 AM](#)

[Local Storm Report issued 8:14 AM](#)

[Local Storm Report issued 8:55 AM](#)

[Local Storm Report issued 9:41 AM](#)

[Local Storm Report issued 9:43 AM](#)
[Local Storm Report issued 11:15 AM](#)
[Local Storm Report issued 11:16 AM](#)
[Local Storm Report issued 1:34 PM](#)

[Public Information Statement \(Summary\)](#)

GroundHog Day (February 2, 2007) Tornado Outbreak NWS Melbourne Product Issuance Page

FLUS42 KMLB 012159
HWOMLB

HAZARDOUS WEATHER OUTLOOK
NATIONAL WEATHER SERVICE MELBOURNE FL
457 PM EST THU FEB 1 2007

AMZ550-555-570-575-FLZ041-044>047-053-054-058-059-064-141-144-147-
020630-

COASTAL WATERS FROM FLAGLER BEACH TO COCOA BEACH OUT 20 NM-
COASTAL WATERS FROM COCOA BEACH TO JUPITER INLET OUT 20 NM-
WATERS FROM FLAGLER BEACH TO COCOA BEACH 20 TO 60 NM OFFSHORE-
WATERS FROM COCOA BEACH TO JUPITER INLET 20 TO 60 NM OFFSHORE-
INLAND VOLUSIA-NORTHERN LAKE-ORANGE-SEMINOLE-SOUTHERN BREVARD-
OSCEOLA-INDIAN RIVER-OKEECHOBEE-ST. LUCIE-MARTIN-COASTAL VOLUSIA-
SOUTHERN LAKE-NORTHERN BREVARD-
457 PM EST THU FEB 1 2007

THIS HAZARDOUS WEATHER OUTLOOK IS FOR EAST CENTRAL FLORIDA.

.DAY ONE...TONIGHT.

...THUNDERSTORM IMPACT...

A SURFACE LOW PRESSURE AREA OFF THE FLORIDA PANHANDLE THIS EVENING
WILL RIDE EAST NORTHEAST OVERNIGHT. A STRONG UPPER LEVEL JET
STREAM AND INCREASING WIND SHEAR WILL CONTRIBUTE TO THE THREAT FOR
SEVERE STORMS TO AFFECT EAST CENTRAL FLORIDA AFTER 1 AM. THE
HIGHEST THREAT FOR SEVERE WIND GUSTS AND THE POSSIBILITY FOR AN
ISOLATED TORNADO WILL OCCUR MAINLY NORTH OF A LINE FROM LAKE
KISSIMMEE TO MELBOURNE. THE INCREASING WIND FIELDS OVERNIGHT MAY
ALSO ALLOW A FEW OF THE HEAVIER SHOWERS OR STORMS TO PRODUCE WIND
GUSTS OVER 50 MPH.

IT IS RECOMMENDED TO SET YOUR NOAA WEATHER RADIO TO ALERT BEFORE
GOING TO SLEEP IN CASE WARNINGS ARE ISSUED OVERNIGHT.

...MARINE THUNDERSTORM GUST IMPACT...

FAST MOVING SHOWERS AND ISOLATED STORMS WILL MOVE OFFSHORE FROM
THE MAINLAND TONIGHT. WIND GUSTS OVER 35 KNOTS MAY OCCUR WITH
STORMS.

...WIND AND SEA IMPACT...

SOUTH WINDS WILL CONTINUE TO INCREASE OVER THE WATERS THIS EVENING
WITH SMALL CRAFT ADVISORY CONDITIONS. CONDITIONS WILL FURTHER
DETERIORATE LATER TONIGHT AS WINDS BECOME SOUTHWEST WITH ADDITIONAL
STRENGTHENING. A FEW GUSTS NEAR GALE FORCE WILL BE POSSIBLE OVER THE
OFFSHORE WATERS TONIGHT.

.DAYS TWO THROUGH SEVEN...FRIDAY THROUGH WEDNESDAY.

THERE WILL BE A SLIGHT CHANCE OF THUNDERSTORMS ON FRIDAY AS A FRONT
MOVES INTO NORTH FLORIDA. COOL AND BREEZY CONDITIONS WILL DEVELOP ON
SUNDAY AS HIGH PRESSURE BUILDS INTO THE AREA. A SMALL CRAFT ADVISORY
WILL BE LIKELY ON SUNDAY AND INTO MONDAY. DRY CONDITIONS FROM
TUESDAY THROUGH MIDWEEK WILL CREATE A FIRE WEATHER HAZARD.

.SPOTTER INFORMATION STATEMENT...
SPOTTERS SHOULD MONITOR THE WEATHER. FORMAL ACTIVATION MAY BE
NEEDED OVERNIGHT.

\$\$

VOLKMER

WFUS52 KMLB 020806
TORMLB
FLC069-020900-
/O.NEW.KMLB.TO.W.0003.070202T0804Z-070202T0900Z/

BULLETIN - EAS ACTIVATION REQUESTED
TORNADO WARNING
NATIONAL WEATHER SERVICE MELBOURNE FL
304 AM EST FRI FEB 2 2007

THE NATIONAL WEATHER SERVICE IN MELBOURNE HAS ISSUED A

* TORNADO WARNING FOR...
NORTHERN LAKE COUNTY IN EAST CENTRAL FLORIDA...
THIS INCLUDES THE CITIES OF...PAISLEY...LISBON...LAKE GRIFFIN...
LADY LAKE...THE VILLAGES...EMERALDA...

* UNTIL 400 AM EST

* AT 304 AM EST...NATIONAL WEATHER SERVICE DOPPLER RADAR INDICATED
A SEVERE THUNDERSTORM CAPABLE OF PRODUCING A TORNADO 10 MILES WEST
OF LADY LAKE. THIS STORM WAS MOVING EAST NORTHEAST AT 50 MPH.

* THE TORNADO WILL BE NEAR...
LADY LAKE AND THE VILLAGES BY 315 AM EST...
PAISLEY BY 345 AM EST...

THE SAFEST PLACE TO BE DURING A TORNADO IS IN A STRONG BUILDING ON
THE LOWEST FLOOR...IN AN INTERIOR ROOM SUCH AS A BATHROOM OR CLOSET.
KEEP AWAY FROM WINDOWS. GET UNDER A WORKBENCH OR OTHER PIECE OF
STURDY FURNITURE. USE BLANKETS OR PILLOWS TO COVER YOUR BODY.

LAT...LON 2897 8216 2879 8209 2889 8136 2926 8165

WWUS52 KMLB 020817
SVSMLB

SEVERE WEATHER STATEMENT
NATIONAL WEATHER SERVICE MELBOURNE FL
315 AM EST FRI FEB 2 2007

FLC069-020900-
/O.CON.KMLB.TO.W.0003.000000T0000Z-070202T0900Z/
LAKE FL-
315 AM EST FRI FEB 2 2007

...A TORNADO WARNING REMAINS IN EFFECT UNTIL 400 AM EST FOR NORTHERN
LAKE COUNTY...

AT 315 AM EST...NATIONAL WEATHER SERVICE DOPPLER RADAR CONTINUED TO
INDICATE A TORNADO. THIS TORNADO WAS LOCATED 6 MILES WEST OF LADY
LAKE...MOVING EAST NORTHEAST AT 50 MPH.

THIS IS AN EXTREMELY DANGEROUS AND LIFE THREATENING SITUATION. THIS
STORM IS CAPABLE OF PRODUCING STRONG TO VIOLENT TORNADOES. IF YOU ARE
IN THE PATH OF THIS TORNADO...TAKE COVER IMMEDIATELY!

TAKE COVER NOW! TAKE COVER NOW! TAKE COVER NOW!

IF YOU LIVE IN THE VILLAGES OR LADY LAKE...COVER NOW!

A TORNADO WATCH REMAINS IN EFFECT UNTIL 600 AM EST FRIDAY MORNING FOR EAST CENTRAL FLORIDA.

LAT...LON 2897 8216 2879 8209 2889 8136 2926 8165

WWUS52 KMLB 020827
SVSMLB

SEVERE WEATHER STATEMENT
NATIONAL WEATHER SERVICE MELBOURNE FL
325 AM EST FRI FEB 2 2007

FLC069-020900-
/O.CON.KMLB.TO.W.0003.000000T0000Z-070202T0900Z/
LAKE FL-
325 AM EST FRI FEB 2 2007

...A TORNADO WARNING REMAINS IN EFFECT UNTIL 400 AM EST FOR NORTHERN LAKE COUNTY...

AT 325 AM EST...LADY LAKE POLICE REPORTED THAT A TORNADO TOUCHED DOWN AND POWER OUTAGES HAVE BEEN REPORTED IN LADY LAKE. THIS IS A DANGEROUS SITUATION. THE STORM PRODUCING THE TORNADO HAD CROSSED LAKE GRIFFIN AND IS MOVING SOUTH OF EMERALDA AND TOWARD UMATILLA IN LAKE COUNTY.

IF YOU ARE IN THE PATH OF THIS TORNADO TAKE COVER.

THE SAFEST PLACE TO BE DURING A TORNADO IS INDOORS IN A STURDY STRUCTURE. GET UNDER A WORKBENCH OR OTHER PIECE OF STURDY FURNITURE. IF NO BASEMENT IS AVAILABLE...SEEK SHELTER ON THE LOWEST FLOOR OF THE BUILDING IN AN INTERIOR HALLWAY OR ROOM SUCH AS A CLOSET. USE BLANKETS OR PILLOWS TO COVER YOUR BODY AND ALWAYS STAY AWAY FROM WINDOWS.

A TORNADO WATCH REMAINS IN EFFECT UNTIL 600 AM EST FRIDAY MORNING FOR EAST CENTRAL FLORIDA.

LAT...LON 2897 8216 2879 8209 2889 8136 2926 8165

WWUS52 KMLB 020836
SVSMLB

SEVERE WEATHER STATEMENT
NATIONAL WEATHER SERVICE MELBOURNE FL
334 AM EST FRI FEB 2 2007

FLC069-020900-
/O.CON.KMLB.TO.W.0003.000000T0000Z-070202T0900Z/
LAKE FL-
334 AM EST FRI FEB 2 2007

...A TORNADO WARNING REMAINS IN EFFECT UNTIL 400 AM EST FOR NORTHERN LAKE COUNTY...

AT 334 AM EST...NATIONAL WEATHER SERVICE DOPPLER RADAR CONTINUED TO INDICATE A TORNADO. THIS TORNADO WAS LOCATED ABOUT 5 MILES NORTH OF UMATILLA AND WAS MOVING EAST NORTHEAST AT 50 MPH.

OTHER LOCATIONS IN THE WARNING INCLUDE BUT ARE NOT LIMITED TO PAISLEY...LAKE KATHRYN HEIGHTS...FULLERVILLE AND FOREST HILLS.

IF YOU ARE IN THESE AREAS...SEEK SAFE SHELTER AND TAKE COVER.

WHEN A TORNADO WARNING IS ISSUED BASED ON DOPPLER RADAR...IT MEANS THAT STRONG ROTATION HAS BEEN DETECTED IN THE STORM. A TORNADO MAY ALREADY BE ON THE GROUND...OR IS EXPECTED TO DEVELOP SHORTLY. IF YOU ARE IN THE PATH OF THIS DANGEROUS STORM...MOVE INDOORS AND TO THE LOWEST LEVEL OF THE BUILDING. STAY AWAY FROM WINDOWS. IF DRIVING...DO NOT SEEK SHELTER UNDER A HIGHWAY OVERPASS.

A TORNADO WATCH REMAINS IN EFFECT UNTIL 600 AM EST FRIDAY MORNING FOR EAST CENTRAL FLORIDA.

LAT...LON 2897 8216 2879 8209 2889 8136 2926 8165

WWUS52 KMLB 020843
SVSMLB

SEVERE WEATHER STATEMENT
NATIONAL WEATHER SERVICE MELBOURNE FL
341 AM EST FRI FEB 2 2007

FLC069-020900-
/O.CON.KMLB.TO.W.0003.000000T0000Z-070202T0900Z/
LAKE FL-
341 AM EST FRI FEB 2 2007

...A TORNADO WARNING REMAINS IN EFFECT UNTIL 400 AM EST FOR NORTHERN LAKE COUNTY...

AT 341 AM EST...NATIONAL WEATHER SERVICE DOPPLER RADAR CONTINUED TO INDICATE A TORNADO. THIS TORNADO WAS LOCATED ABOUT 12 MILES WEST OF PAISLEY AND WAS MOVING EAST NORTHEAST 50 MPH.

THIS IS A DANGEROUS AND POTENTIALLY LIFE THREATENING SITUATIONN.
RESIDENTS OF PAISLEY SHOULD TAKE COVER NOW!!

THIS STORM IS CAPABLE OF PRODUCING STRONG TO VIOLENT TORNADOES. IF YOU ARE IN THE PATH OF THIS TORNADO...TAKE COVER IMMEDIATELY!

A TORNADO WATCH REMAINS IN EFFECT UNTIL 600 AM EST FRIDAY MORNING FOR EAST CENTRAL FLORIDA.

LAT...LON 2897 8216 2879 8209 2889 8136 2926 8165

WWUS52 KMLB 020848
SVSMLB

SEVERE WEATHER STATEMENT
NATIONAL WEATHER SERVICE MELBOURNE FL
346 AM EST FRI FEB 2 2007

FLC069-020900-
/O.CON.KMLB.TO.W.0003.000000T0000Z-070202T0900Z/
LAKE FL-
346 AM EST FRI FEB 2 2007

...A TORNADO WARNING REMAINS IN EFFECT UNTIL 400 AM EST FOR NORTHERN LAKE COUNTY...

AT 346 AM EST...NATIONAL WEATHER SERVICE DOPPLER RADAR CONTINUED TO INDICATE A TORNADO. THIS TORNADO WAS LOCATED NEAR PAISLEY MOVING EAST AT 50 MPH.

THIS IS AN EXTREMELY DANGEROUS AND LIFE THREATENING SITUATION. THIS STORM IS CAPABLE OF PRODUCING STRONG TO VIOLENT TORNADOES. IF YOU ARE IN THE PATH OF THIS TORNADO...TAKE COVER!

IN ADDITION TO THE TORNADO...THIS STORM IS CAPABLE OF PRODUCING QUARTER SIZE HAIL AND FREQUENT LIGHTNING.

GET UNDER A WORKBENCH OR OTHER PIECE OF STURDY FURNITURE. IF NO BASEMENT IS AVAILABLE...SEEK SHELTER ON THE LOWEST FLOOR OF THE BUILDING IN AN INTERIOR HALLWAY OR ROOM SUCH AS A CLOSET. USE BLANKETS OR PILLOWS TO COVER YOUR BODY AND ALWAYS STAY AWAY FROM WINDOWS.

A TORNADO WATCH REMAINS IN EFFECT UNTIL 600 AM EST FRIDAY MORNING FOR EAST CENTRAL FLORIDA.

LAT...LON 2897 8216 2879 8209 2889 8136 2926 8165

WFUS52 KMLB 020852
TORMLB
FLC127-020915-
/O.NEW.KMLB.TO.W.0004.070202T0849Z-070202T0915Z/

BULLETIN - EAS ACTIVATION REQUESTED
TORNADO WARNING
NATIONAL WEATHER SERVICE MELBOURNE FL
352 AM EST FRI FEB 2 2007

THE NATIONAL WEATHER SERVICE IN MELBOURNE HAS ISSUED A

* TORNADO WARNING FOR...
VOLUSIA COUNTY IN EAST CENTRAL FLORIDA
THIS INCLUDES THE CITIES OF...DELAND...DELEON SPRINGS...
LAKE HELEN...DAYTONA BEACH...PONCE INLET

* UNTIL 415 AM EST

* AT 350 AM EST...NATIONAL WEATHER SERVICE DOPPLER RADAR INDICATED A SEVERE THUNDERSTORM WITH LARGE HAIL AND CAPABLE OF PRODUCING A TORNADO 10 MILES SOUTHWEST OF DE LEON SPRINGS...OR ABOUT NEAR PAISLEY...MOVING EAST AT 50 MPH.

* OTHER LOCATIONS IN THE WARNING INCLUDE BUT ARE NOT LIMITED TO DAYTONA BEACH INTL SPEEDWAY AND WILBUR BY THE SEA. PERSONS IN THE PATH OF THIS DANGEROUS STORM SHOULD TAKE COVER IMMEDIATELY!

THE SAFEST PLACE TO BE DURING A TORNADO IS IN A STRONG BUILDING ON THE LOWEST FLOOR. MOVE TO AN INTERIOR ROOM...SUCH AS A BATHROOM OR CLOSET AND KEEP AWAY FROM WINDOWS. GET UNDER A WORKBENCH OR OTHER PIECE OF STURDY FURNITURE. USE BLANKETS OR PILLOWS TO COVER YOUR BODY.

EVACUATE MOBILE HOMES OR VEHICLES FOR MORE SUBSTANTIAL SHELTER. HEAD TO THE NEAREST STURDY BUILDING. PUT AS MANY WALLS BETWEEN YOU AND THE TORNADO AS POSSIBLE.

TORNADOES AT NIGHT ARE DIFFICULT TO SEE. WATCH FOR THE POPPING OF ELECTRIC LINES AND TRANSFORMERS OR LISTEN FOR THE SOUND OF LOUD RUMBLING AS THAT OF AN APPROACHING FREIGHT TRAIN.

LAT...LON 2910 8153 2892 8150 2905 8035 2931 8040

WWUS52 KMLB 020900
SVSMLB

SEVERE WEATHER STATEMENT
NATIONAL WEATHER SERVICE MELBOURNE FL
359 AM EST FRI FEB 2 2007

FLC069-020909-
/O.EXP.KMLB.TO.W.0003.000000T0000Z-070202T0900Z/
LAKE FL-
359 AM EST FRI FEB 2 2007

...THE TORNADO WARNING FOR NORTHERN LAKE COUNTY EXPIRES AT 400 AM
EST...

NATIONAL WEATHER SERVICE DOPPLER RADAR INDICATED THAT THE TORNADIC
STORM HAS MOVED INTO WESTERN VOLUSIA COUNTY NEAR DE LAND.

A TORNADO WATCH REMAINS IN EFFECT UNTIL 600 AM EST FRIDAY MORNING FOR
EAST CENTRAL FLORIDA.

LAT...LON 2897 8216 2879 8209 2889 8136 2926 8165

\$\$

WWUS52 KMLB 020902
SVSMLB

SEVERE WEATHER STATEMENT
NATIONAL WEATHER SERVICE MELBOURNE FL
401 AM EST FRI FEB 2 2007

FLC127-020915-
/O.CON.KMLB.TO.W.0004.000000T0000Z-070202T0915Z/
VOLUSIA FL-
401 AM EST FRI FEB 2 2007

...A TORNADO WARNING REMAINS IN EFFECT UNTIL 415 AM EST FOR VOLUSIA
COUNTY...

AT 401 AM EST...WEATHER SERVICE DOPPLER RADAR CONTINUED TO INDICATE A
SEVERE THUNDERSTORM WITH STRONG ROTATION. THIS TORNADO WAS LOCATED
NEAR DE LAND MOVING EAST AT 50 MPH.

OTHER LOCATIONS IN THE WARNING INCLUDE BUT ARE NOT LIMITED TO
CASSADAGA...LAKE HELEN...TIGER BAY STATE FOREST...WILBUR BY THE
SEA...SPRUCE CREEK...PORT ORANGE...SOUTH DAYTONA...PONCE
INLET...DAYTONA BEACH SHORES...DAYTONA BEACH INTL SPEEDWAY.

IN ADDITION TO THE TORNADO...THIS STORM IS CAPABLE OF PRODUCING COIN
SIZE HAIL AND DESTRUCTIVE STRAIGHT LINE WINDS.

A TORNADO WATCH REMAINS IN EFFECT UNTIL 600 AM EST FRIDAY MORNING FOR
EAST CENTRAL FLORIDA.

LAT...LON 2910 8153 2892 8150 2905 8035 2931 8040

WFUS52 KMLB 020914
TORMLB

FLC127-020945-
/O.NEW.KMLB.TO.W.0005.070202T0910Z-070202T0945Z/

BULLETIN - EAS ACTIVATION REQUESTED
TORNADO WARNING
NATIONAL WEATHER SERVICE MELBOURNE FL
413 AM EST FRI FEB 2 2007

THE NATIONAL WEATHER SERVICE IN MELBOURNE HAS ISSUED A

* TORNADO WARNING FOR...
VOLUSIA COUNTY IN EAST CENTRAL FLORIDA... THIS INCLUDES THE
CITIES OF...PORT ORANGE...SOUTH DAYTONA...PONCE INLET...DAYTONA
BEACH...

* UNTIL 445 AM EST

* AT 412 AM EST...NATIONAL WEATHER SERVICE DOPPLER RADAR INDICATED A
SEVERE THUNDERSTORM CAPABLE OF PRODUCING A TORNADO 15 MILES
SOUTHWEST OF PORT ORANGE...OR ABOUT NEAR LAKE HELEN...MOVING EAST
AT 50 MPH.

* THE TORNADO WILL MOVE RAPIDLY TOWARD THE COAST BETWEEN DAYTONA
BEACH AND PONCE INLET. PERSONS IN THE PATH OF THIS DANGEROUS STORM
SHOULD TAKE COVER IMMEDIATELY!

HEAVY RAINFALL MAY OBSCURE THIS TORNADO. TAKE COVER NOW! IF YOU WAIT
TO SEE OR HEAR IT COMING...IT MAY BE TOO LATE TO GET TO A SAFE PLACE.

LAT...LON 2906 8128 2900 8127 2897 8082 2925 8096

WWUS52 KMLB 020920
SVSMLB

SEVERE WEATHER STATEMENT
NATIONAL WEATHER SERVICE MELBOURNE FL
420 AM EST FRI FEB 2 2007

FLC127-020945-
/O.CON.KMLB.TO.W.0005.000000T0000Z-070202T0945Z/
VOLUSIA FL-
420 AM EST FRI FEB 2 2007

...A TORNADO WARNING REMAINS IN EFFECT UNTIL 445 AM EST FOR VOLUSIA
COUNTY...

AT 420 AM EST...NATIONAL WEATHER SERVICE DOPPLER RADAR CONTINUED TO
INDICATE A TORNADO. THIS TORNADO WAS NEAR SPRUCE CREEK...MOVING
EAST AT 50 MPH. PERSONS IN THE PATH OF THIS DANGEROUS STORM SHOULD
TAKE COVER IMMEDIATELY!

OTHER LOCATIONS IN THE WARNING INCLUDE BUT ARE NOT LIMITED TO SOUTH
DAYTONA...PORT ORANGE...ALLANDALE...DAYTONA BEACH SHORES...WILBUR BY
THE SEA...PONCE INLET AND NEW SMYRNA BEACH.

IF YOU ARE CAUGHT OUTSIDE...SEEK SHELTER IN A NEARBY REINFORCED
BUILDING. AS A LAST RESORT...SEEK SHELTER IN A CULVERT...DITCH OR LOW
SPOT AND COVER YOUR HEAD WITH YOUR HANDS.

A TORNADO WATCH REMAINS IN EFFECT UNTIL 600 AM EST FRIDAY MORNING FOR
EAST CENTRAL FLORIDA.

LAT...LON 2906 8128 2900 8127 2897 8082 2925 8096

WWUS52 KMLB 020931
SVSMLB

SEVERE WEATHER STATEMENT
NATIONAL WEATHER SERVICE MELBOURNE FL
430 AM EST FRI FEB 2 2007

FLC127-020945-
/O.CON.KMLB.TO.W.0005.000000T0000Z-070202T0945Z/
VOLUSIA FL-
430 AM EST FRI FEB 2 2007

...A TORNADO WARNING REMAINS IN EFFECT UNTIL 445 AM EST FOR VOLUSIA COUNTY...

AT 430 AM EST...DOPPLER RADAR INDICATED A TORNDO NEAR THE COAST AROUND PONCE INLET AND WILBUR BY THE SEA MOVING RAPIDLY EAST AT 50 MPH. LAW ENFORCEMENT REPORTED DAMAGE IN DELAND AS THIS DANGEROUS STORM MOVED THROUGH. TAKE COVER IMMEDIATELY IN THE PATH OF THIS STORM!

IF IN MOBILE HOMES OR VEHICLES...EVACUATE THEM AND GET INSIDE A STURDY SHELTER. IF NO SHELTER IS AVAILABLE...LIE FLAT IN THE NEAREST DITCH OR OTHER LOW SPOT AND COVER YOUR HEAD WITH YOUR HANDS.

A TORNADO WATCH REMAINS IN EFFECT UNTIL 600 AM EST FRIDAY MORNING FOR EAST CENTRAL FLORIDA.

LAT...LON 2906 8128 2900 8127 2897 8082 2925 8096

WWUS52 KMLB 020817
SVSMLB

SEVERE WEATHER STATEMENT
NATIONAL WEATHER SERVICE MELBOURNE FL
315 AM EST FRI FEB 2 2007

FLC069-020900-
/O.CON.KMLB.TO.W.0003.000000T0000Z-070202T0900Z/
LAKE FL-
315 AM EST FRI FEB 2 2007

...A TORNADO WARNING REMAINS IN EFFECT UNTIL 400 AM EST FOR NORTHERN LAKE COUNTY...

AT 315 AM EST...NATIONAL WEATHER SERVICE DOPPLER RADAR CONTINUED TO INDICATE A TORNADO. THIS TORNADO WAS LOCATED 6 MILES WEST OF LADY LAKE...MOVING EAST NORTHEAST AT 50 MPH.

THIS IS AN EXTREMELY DANGEROUS AND LIFE THREATENING SITUATION. THIS STORM IS CAPABLE OF PRODUCING STRONG TO VIOLENT TORNADOES. IF YOU ARE IN THE PATH OF THIS TORNADO...TAKE COVER IMMEDIATELY!

TAKE COVER NOW! TAKE COVER NOW! TAKE COVER NOW!

IF YOU LIVE IN THE VILLAGES OR LADY LAKE...COVER NOW!

A TORNADO WATCH REMAINS IN EFFECT UNTIL 600 AM EST FRIDAY MORNING FOR EAST CENTRAL FLORIDA.

LAT...LON 2897 8216 2879 8209 2889 8136 2926 8165

NWUS52 KMLB 021013
LSRMLB

PRELIMINARY LOCAL STORM REPORT
NATIONAL WEATHER SERVICE MELBOURNE FL
513 AM EST FRI FEB 02 2007

..TIME... ..EVENT... ..CITY LOCATION... ..LAT.LON...
..DATE... ..MAG.... ..COUNTY LOCATION..ST.. ..SOURCE....
..REMARKS..

0315 AM TORNADO LADY LAKE 28.93N 81.93W
02/02/2007 LAKE FL BROADCAST MEDIA

PRELIMINARY REPORT. DOWNED TREES, POWER LINES AND DAMAGE
TO STRUCTURES IN LADY LAKE AREA VICINITY HWY 27 AND OAK
HILL ROAD

NWUS52 KMLB 021040
LSRMLB

PRELIMINARY LOCAL STORM REPORT
NATIONAL WEATHER SERVICE MELBOURNE FL
540 AM EST FRI FEB 02 2007

..TIME... ..EVENT... ..CITY LOCATION... ..LAT.LON...
..DATE... ..MAG.... ..COUNTY LOCATION..ST.. ..SOURCE....
..REMARKS..

0400 AM TSTM WND DMG 3 NE DE LAND 29.07N 81.26W
02/02/2007 VOLUSIA FL BROADCAST MEDIA

POSSIBLE TORNADO. PRELIMINARY REPORT. INTERSTATE 4 AT
STATE ROAD 44 CLOSED BOTH LANES DUE TO MULTIPLE VEHICLE
ACCIDENT INCLUDING LARGE TRACTOR TRAILER TRUCKS OVER
TURNED.

NWUS52 KMLB 021109
LSRMLB

PRELIMINARY LOCAL STORM REPORT
NATIONAL WEATHER SERVICE MELBOURNE FL
609 AM EST FRI FEB 02 2007

..TIME... ..EVENT... ..CITY LOCATION... ..LAT.LON...
..DATE... ..MAG.... ..COUNTY LOCATION..ST.. ..SOURCE....
..REMARKS..

0320 AM TORNADO THE VILLAGES 28.95N 81.94W
02/02/2007 LAKE FL COUNTY OFFICIAL

POSSIBLE TORNADO. LAKE COUNTY E. M. REPORTS EXTENSIVE
DAMAGE TO HOMES AND MOBILE HOMES IN THE VILLAGES AND LADY
LAKE AREAS WITH AT LEAST ONE POSSIBLE FATALITY.
ADDITIONAL DAMAGE REPORTED IN LAKE MACK NEAR HWY 42 AND
44.

NWUS52 KMLB 021227
LSRMLB

PRELIMINARY LOCAL STORM REPORT
NATIONAL WEATHER SERVICE MELBOURNE FL
727 AM EST FRI FEB 02 2007

..TIME... ..EVENT... ..CITY LOCATION... ..LAT.LON...
..DATE... ..MAG.... ..COUNTY LOCATION..ST.. ..SOURCE....
..REMARKS..

0400 AM TSTM WND DMG NEW SMYRNA BEACH 29.03N 80.92W
02/02/2007 VOLUSIA FL TRAINED SPOTTER

REPORTS TREES AND POWER LINES DOWN AT NSB AIRPORT.

NWUS52 KMLB 021314
LSRMLB

PRELIMINARY LOCAL STORM REPORT
NATIONAL WEATHER SERVICE MELBOURNE FL
814 AM EST FRI FEB 02 2007

..TIME... ..EVENT... ..CITY LOCATION... ..LAT.LON...
..DATE... ..MAG.... ..COUNTY LOCATION..ST.. ..SOURCE....
..REMARKS..

0530 AM TSTM WND DMG ORLANDO 28.50N 81.37W
02/02/2007 ORANGE FL AMATEUR RADIO

1500 FOOT TOWER DOWN IN ORLANDO AREA SERVING WCFB RADIO.
TIME OF OCCURRENCE ESTIMATED. PRELIMINARY DATA AS OF THIS
TIME.

NWUS52 KMLB 021355
LSRMLB

PRELIMINARY LOCAL STORM REPORT
NATIONAL WEATHER SERVICE MELBOURNE FL
855 AM EST FRI FEB 02 2007

..TIME... ..EVENT... ..CITY LOCATION... ..LAT.LON...
..DATE... ..MAG.... ..COUNTY LOCATION..ST.. ..SOURCE....
..REMARKS..

0530 AM TORNADO DE LAND 29.04N 81.30W
02/02/2007 VOLUSIA FL EMERGENCY MNGR

*** 3 INJ *** POSSIBLE TORNADO. LAKE BEARSFORD AREA.
SEVERAL MINOR INJURIES AS OF THIS TIME.

NWUS52 KMLB 021441
LSRMLB

PRELIMINARY LOCAL STORM REPORT
NATIONAL WEATHER SERVICE MELBOURNE FL
941 AM EST FRI FEB 02 2007

..TIME... ..EVENT... ..CITY LOCATION... ..LAT.LON...
..DATE... ..MAG.... ..COUNTY LOCATION..ST.. ..SOURCE....
..REMARKS..

0535 AM TORNADO DE LAND 29.04N 81.30W

02/02/2007 VOLUSIA FL PUBLIC

POSSIBLE TORNADO. APPLEWOOD APARTMENTS. COMPLEX EXTENDS
FROM SOUTH END OF AMELIA AVE TO US 92. MAJOR DAMAGE.

NWUS52 KMLB 021443
LSRMLB

PRELIMINARY LOCAL STORM REPORT
NATIONAL WEATHER SERVICE MELBOURNE FL
943 AM EST FRI FEB 02 2007

..TIME... ..EVENT... ..CITY LOCATION... ..LAT.LON...
..DATE... ..MAG.... ..COUNTY LOCATION..ST.. ..SOURCE....
..REMARKS..

0535 AM TORNADO DE LAND 29.04N 81.30W
02/02/2007 VOLUSIA FL CO-OP OBSERVER

POSSIBLE TORNADO. DE LAND WASTE TREATMENT PLANT. DAMAGE
TO ROOFS, VENTS, TREES. DOORS AND WINDOWS BLOWN OUT OF
SOME BUILDINGS.

NWUS52 KMLB 021615
LSRMLB

PRELIMINARY LOCAL STORM REPORT
NATIONAL WEATHER SERVICE MELBOURNE FL
1115 AM EST FRI FEB 02 2007

..TIME... ..EVENT... ..CITY LOCATION... ..LAT.LON...
..DATE... ..MAG.... ..COUNTY LOCATION..ST.. ..SOURCE....
..REMARKS..

0315 AM TORNADO LADY LAKE 28.93N 81.93W
02/02/2007 LAKE FL BROADCAST MEDIA

*** 3 FATAL ***

NWUS52 KMLB 021616
LSRMLB

PRELIMINARY LOCAL STORM REPORT
NATIONAL WEATHER SERVICE MELBOURNE FL
1116 AM EST FRI FEB 02 2007

..TIME... ..EVENT... ..CITY LOCATION... ..LAT.LON...
..DATE... ..MAG.... ..COUNTY LOCATION..ST.. ..SOURCE....
..REMARKS..

0345 AM TORNADO PAISLEY 28.98N 81.54W
02/02/2007 LAKE FL BROADCAST MEDIA

*** 11 FATAL ***

NWUS52 KMLB 021834
LSRMLB

PRELIMINARY LOCAL STORM REPORT...CORRECTED
NATIONAL WEATHER SERVICE MELBOURNE FL
134 PM EST FRI FEB 02 2007

..TIME... ..EVENT... ..CITY LOCATION... ..LAT.LON...
..DATE... ..MAG... ..COUNTY LOCATION..ST... ..SOURCE....
..REMARKS..

0110 AM TSTM WND DMG 8 N ORMOND BEACH 29.39N 81.06W
02/02/2007 AMZ550 FL AMATEUR RADIO

TREES DOWN AT OLD DIXIE HIGHWAY AND WALTER BOARDMAN ROAD.
TIME ESTIMATED BY RADAR.

0143 AM HAIL 5 N DAYTONA BEACH 29.28N 81.03W
02/02/2007 E0.25 INCH VOLUSIA FL AMATEUR RADIO

REPORTED AT MILE MARKER 275.

0315 AM TORNADO LADY LAKE 28.93N 81.93W
02/02/2007 LAKE FL BROADCAST MEDIA

PRELIMINARY REPORT. DOWNED TREES, POWER LINES AND DAMAGE
TO STRUCTURES IN LADY LAKE AREA VICINITY HWY 27 AND OAK
HILL ROAD

0315 AM TORNADO LADY LAKE 28.93N 81.93W
02/02/2007 LAKE FL BROADCAST MEDIA

*** 3 FATAL ***

0320 AM TORNADO THE VILLAGES 28.95N 81.94W
02/02/2007 LAKE FL COUNTY OFFICIAL

POSSIBLE TORNADO. LAKE COUNTY E. M. REPORTS EXTENSIVE
DAMAGE TO HOMES AND MOBILE HOMES IN THE VILLAGES AND LADY
LAKE AREAS WITH AT LEAST ONE POSSIBLE FATALITY.
ADDITIONAL DAMAGE REPORTED IN LAKE MACK NEAR HWY 42 AND
44.

0345 AM TORNADO PAISLEY 28.98N 81.54W
02/02/2007 LAKE FL BROADCAST MEDIA

*** 11 FATAL ***

0400 AM TSTM WND DMG 3 NE DE LAND 29.07N 81.26W
02/02/2007 VOLUSIA FL BROADCAST MEDIA

POSSIBLE TORNADO. PRELIMINARY REPORT. INTERSTATE 4 AT
STATE ROAD 44 CLOSED BOTH LANES DUE TO MULTIPLE VEHICLE
ACCIDENT INCLUDING LARGE TRACTOR TRAILER TRUCKS OVER
TURNED.

0400 AM TSTM WND DMG NEW SMYRNA BEACH 29.03N 80.92W
02/02/2007 VOLUSIA FL TRAINED SPOTTER

REPORTS TREES AND POWER LINES DOWN AT NSB AIRPORT.

0530 AM TSTM WND DMG ORLANDO 28.50N 81.37W
02/02/2007 ORANGE FL AMATEUR RADIO

1500 FOOT TOWER DOWN IN ORLANDO AREA SERVING WCFB RADIO.
TIME OF OCCURRENCE ESTIMATED. PRELIMINARY DATA AS OF THIS
TIME.

0530 AM TORNADO DE LAND 29.04N 81.30W
02/02/2007 VOLUSIA FL EMERGENCY MNGR

*** 3 INJ *** POSSIBLE TORNADO. LAKE BEARSFORD AREA.

SEVERAL MINOR INJURIES AS OF THIS TIME.

0535 AM TORNADO DE LAND 29.04N 81.30W
02/02/2007 VOLUSIA FL PUBLIC

POSSIBLE TORNADO. APPLEWOOD APARTMENTS. COMPLEX EXTENDS
FROM SOUTH END OF AMELIA AVE TO US 92. MAJOR DAMAGE.

0535 AM TORNADO DE LAND 29.04N 81.30W
02/02/2007 VOLUSIA FL CO-OP OBSERVER

POSSIBLE TORNADO. DE LAND WASTE TREATMENT PLANT. DAMAGE
TO ROOFS, VENTS, TREES. DOORS AND WINDOWS BLOWN OUT OF
SOME BUILDINGS.

0940 AM TORNADO 2 S GRANT 27.90N 80.53W
02/02/2007 BREVARD FL PUBLIC

PUBLIC VISUAL REPORT OF TORNADO ON GROUND VIEWED FROM US
HWY 1.

NOUS42 KMLB 061958 AAA
PNSMLB

PUBLIC INFORMATION STATEMENT...UPDATED NUMBER OF FATALITIES
NATIONAL WEATHER SERVICE MELBOURNE FL
845 AM EST FRI FEB 15 2007

...NATIONAL WEATHER SERVICE DAMAGE SURVEYS WERE CONDUCTED ON
FEBRUARY 3 BY GROUND AND AIR AND RADAR DATA WERE REVIEWED FOR THE
TORNADO EVENT WHICH IMPACTED LAKE AND VOLUSIA COUNTIES EARLY ON
FEBRUARY 2 2007...

BELOW ARE PRELIMINARY ASSESSMENTS OF THE TORNADOES.

A SUPERCELL THUNDERSTORM MOVED EAST-NORTHEAST AT 50 TO 60 MPH ALONG
A 75+ MILE TRACK FROM SUMTER COUNTY TO OFFSHORE VOLUSIA COUNTY AND
PRODUCED THREE TORNADOES. THE FIRST TWO TORNADOES WERE VIOLENT AND
WERE RESPONSIBLE FOR A TOTAL OF 21 FATALITIES. THE THIRD TORNADO WAS
NOT AS STRONG...BUT STILL RESULTED IN SIGNIFICANT PROPERTY DAMAGE.

THE VILLAGES/LADY LAKE TORNADO...TORNADO NUMBER 1...WAS CLASSIFIED
AS A HIGH END EF-3 TORNADO WITH WINDS OF 155 TO 160 MPH. THIS
TORNADO INITIALLY TOUCHED DOWN AT 308 AM IN SUMTER COUNTY NEAR
WILDWOOD AND THE VILLAGES AND THEN CROSSED INTO LAKE COUNTY AND
STRUCK THE TOWN OF LADY LAKE AT 320 AM. THE TORNADO CAUSED DAMAGE TO
STRUCTURES WHERE MOST WALLS COLLAPSED EXCEPT FOR THEIR INTERIOR
ROOMS. LARGE TREES WERE DEBARKED...WITH ONLY THE STUBS OF THE
LARGEST BRANCHES REMAINING. MOBILE HOMES WERE COMPLETELY DESTROYED.
100 RESIDENCES WERE DAMAGED AND 36 WERE DESTROYED. THE TORNADO
LIFTED AT 325 AM EAST OF LADY LAKE...RESULTING IN A PATH LENGTH OF
16.5 MILES. THE TORNADO WAS ONE-QUARTER MILE WIDE DURING ITS MAXIMUM
EXTENT. EIGHT FATALITIES WERE ASSOCIATED WITH THIS TORNADO.

THE LAKE MACK/DELAND TORNADO...TORNADO NUMBER 2...WAS ALSO
CLASSIFIED AS A HIGH END EF-3 WITH WINDS OF 160 TO 165 MPH. THE
TORNADO TOUCHED DOWN AT 337 AM EAST OF HIGHWAY 439 AND WEST OF LAKE
NORRIS IN RURAL LAKE COUNTY AND REACHED LAKE MACK AT 348 AM WITH
PEAK WINDS NEAR 165 MPH...RESULTING IN 10 FATALITIES. COMPLETE
DESTRUCTION OF MOBILE HOMES OCCURRED AND LARGE TREES WERE DEBARKED.
73 RESIDENCES WERE DAMAGED AND 33 WERE DESTROYED. THE TORNADO THEN
REACHED FOREST DRIVE AND STATE ROAD 44 WITH WINDS OF 150 TO 155
MPH...RESULTING IN 3 ADDITIONAL FATALITIES. THE TORNADO CROSSED FROM
LAKE COUNTY TO VOLUSIA COUNTY NEAR HONTOON ISLAND...AND STRUCK
DELAND AT 402 AM AS A EF-3 TORNADO WITH WINDS NEAR 150 MPH. THE
TORNADO LIFTED AT 410 AM NEAR THE VOLUSIA COUNTY FAIRGROUNDS EAST OF

INTERSTATE 4. OVER 250 MOBILE HOMES AND 27 SINGLE FAMILY HOMES WERE DESTROYED IN DELAND AND UNINCORPORATED WEST VOLUSIA COUNTY. THE PATH LENGTH WAS 26 MILES. THE MAXIMUM TORNADO WIDTH WAS ONE-THIRD OF A MILE. A TOTAL OF 13 FATALITIES OCCURRED WITH THIS DEADLY TORNADO.

THE NEW SMYRNA BEACH/PONCE INLET TORNADO...TORNADO NUMBER 3...WAS CLASSIFIED AS AN EF-1 TORNADO WITH WINDS OF 100 TO 105 MPH. THE TORNADO TOUCHED DOWN EAST OF INTERSTATE 95 AND NORTH OF HIGHWAY 44 IN NEW SMYRNA BEACH AT 422 AM AND LIFTED NEAR THE INTRACOASTAL WATERWAY WEST OF PONCE INLET AT 425 AM. THE TORNADO UPLIFTED ROOFS ON MANY STRUCTURES...CAUSING A SIGNIFICANT LOSS OF ROOFING MATERIAL...COLLAPSE OF CHIMNEYS...AND COLLAPSE OF GARAGE DOORS. ADDITIONAL DAMAGE OCCURRED TO PORCHES AND CARPORTS. 25 SINGLE FAMILY HOMES WERE DESTROYED IN NEW SMYRNA BEACH AND UNINCORPORATED SOUTHEAST VOLUSIA COUNTY. THE PATH LENGTH WAS ABOUT 3 MILES AND THE MAXIMUM WIDTH WAS ONE EIGHTH OF A MILE.

NOTE: THE NEW ENHANCED FUJITA (EF) TORNADO SCALE REPLACED THE PREVIOUS FUJITA (F) SCALE ON FEBRUARY 1 2007. THE EF SCALE WAS DEVELOPED TO BETTER ASSESS WIND SPEEDS ASSOCIATED WITH A WIDE VARIETY OF STRUCTURAL DAMAGE...FROM SINGLE-WIDE MOBILE HOMES TO INDUSTRIAL BUILDINGS TO FRAMED ONE OR TWO FAMILY HOMES...AND MANY MORE. FOR MORE INFORMATION ON THE NEW EF-SCALE...PLEASE SEE THE FOLLOWING WEBSITE: [HTTP://WWW.SPC.NOAA.GOV/FSCALE](http://www.spc.noaa.gov/fscale)

ADDITIONAL INFORMATION ON THIS TORNADO EVENT IS AVAILABLE ON THE NWS MELBOURNE WEBSITE AT:
[HTTP://WWW.SRH.NOAA.GOV/MLB/SURVEYS/020207/INDEX.HTML](http://www.srh.noaa.gov/mlb/surveys/020207/index.html)

\$\$

STAFF/NWS MELBOURNE FL

Additional Information:

There's a connection between dry season severe weather in Florida and sea surface temperatures in the Pacific Ocean. [Read about it here](#) and [here](#).

The "Enhanced Fujita Scale" replaced the traditional Fujita scale for the evaluation of tornado intensity on February 1, 2007. You can [read about it here](#).