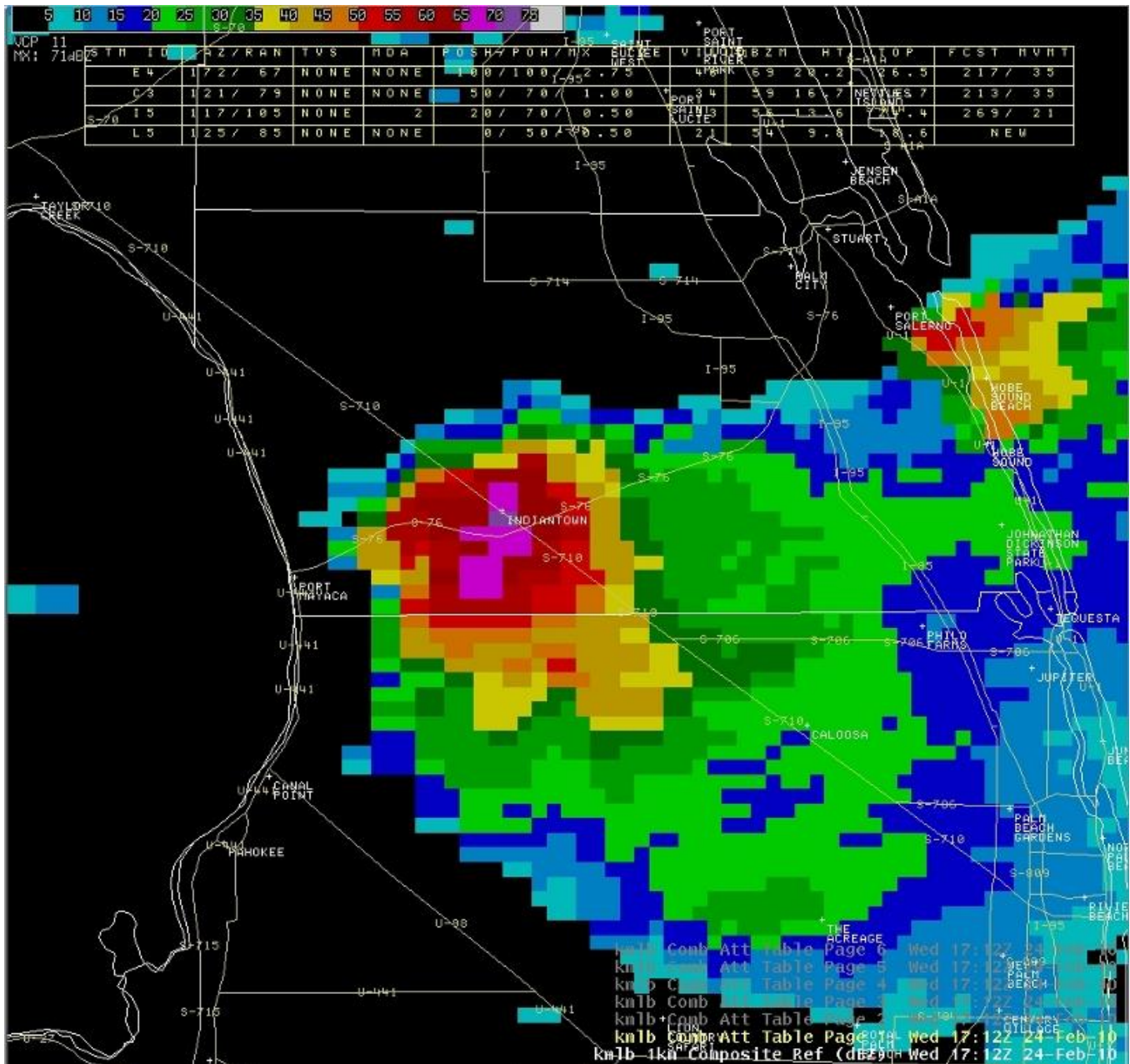


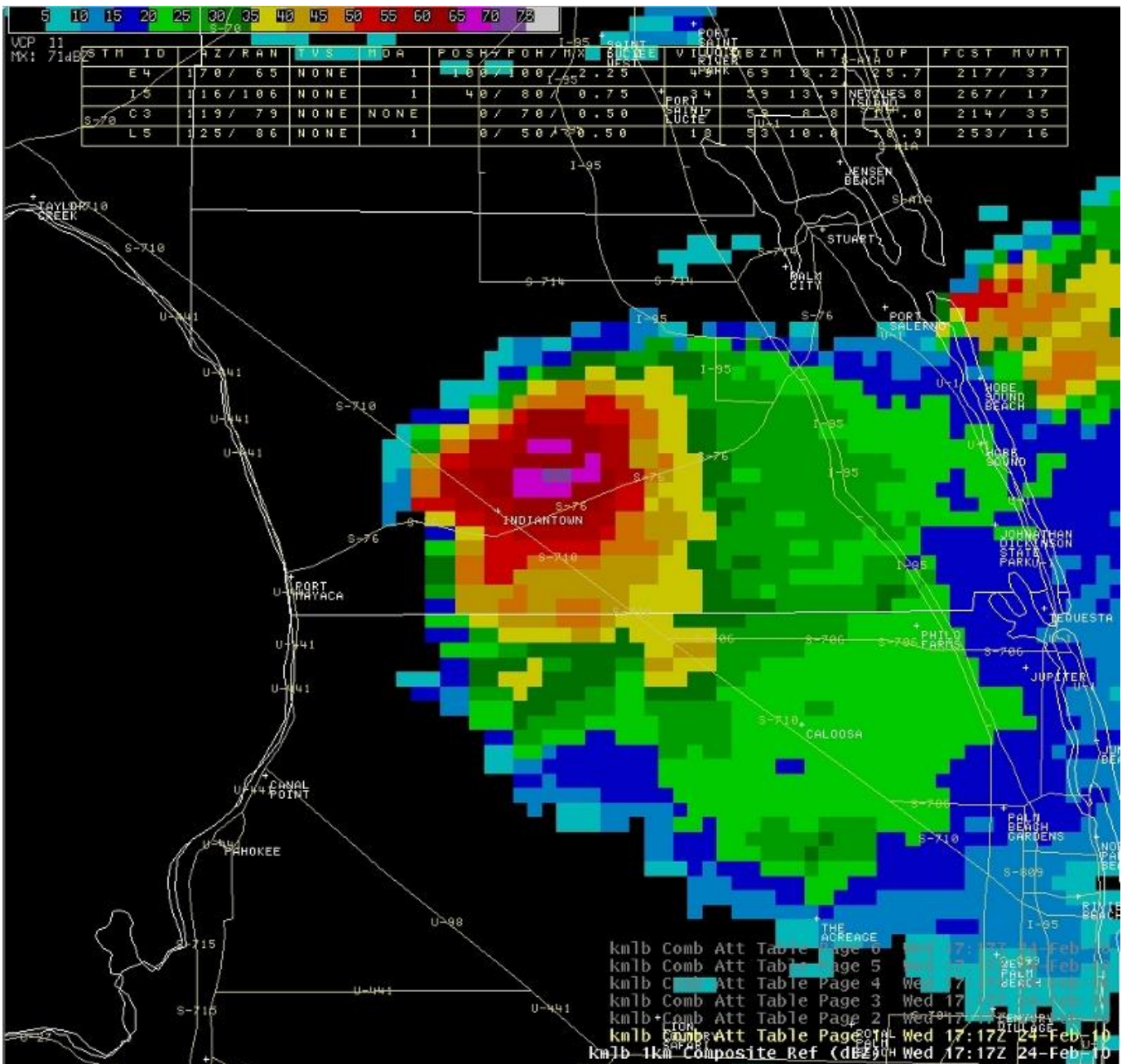
Severe Storms with Large Hail across Martin and southeast St. Lucie County

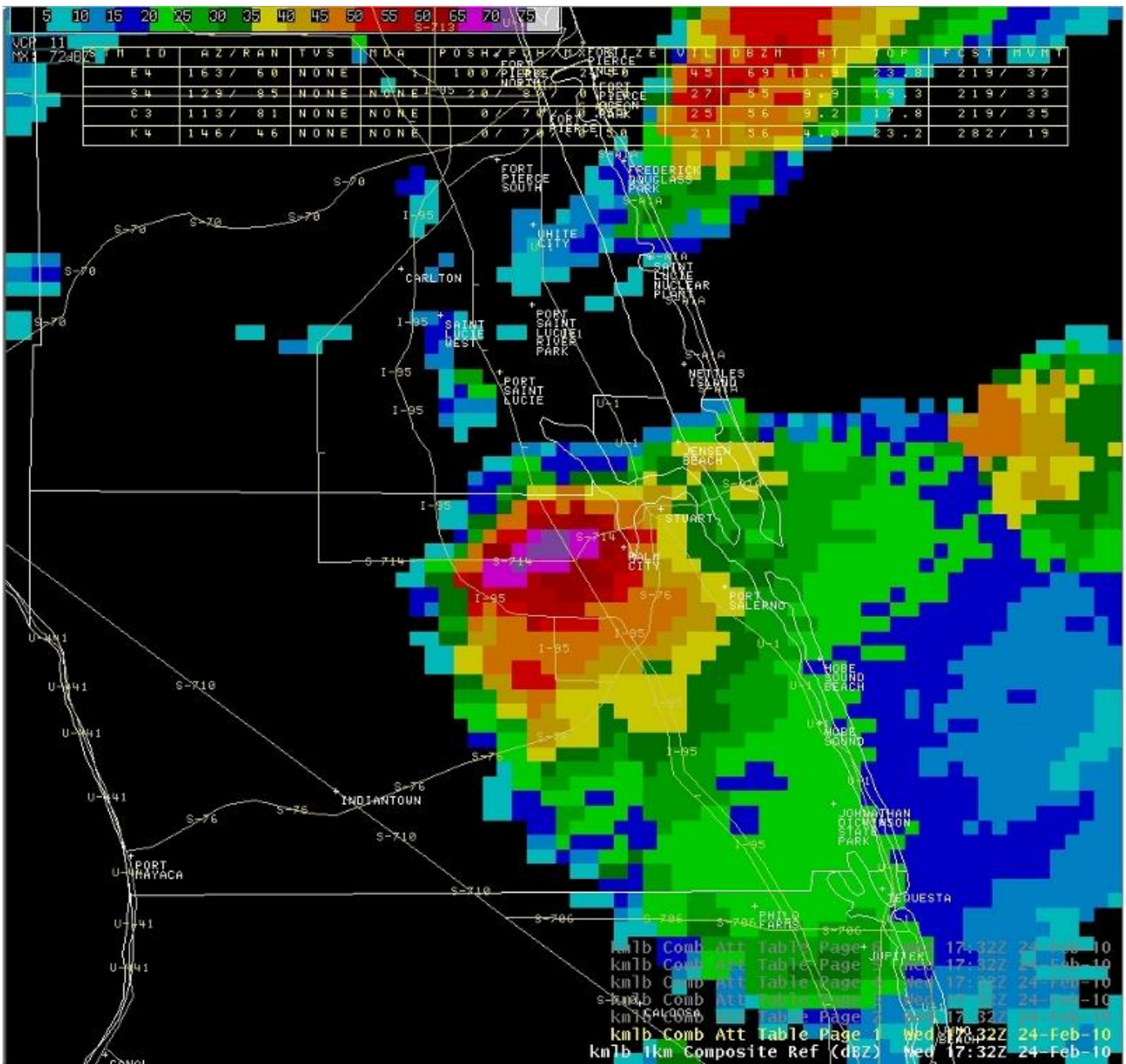
February 24 2010

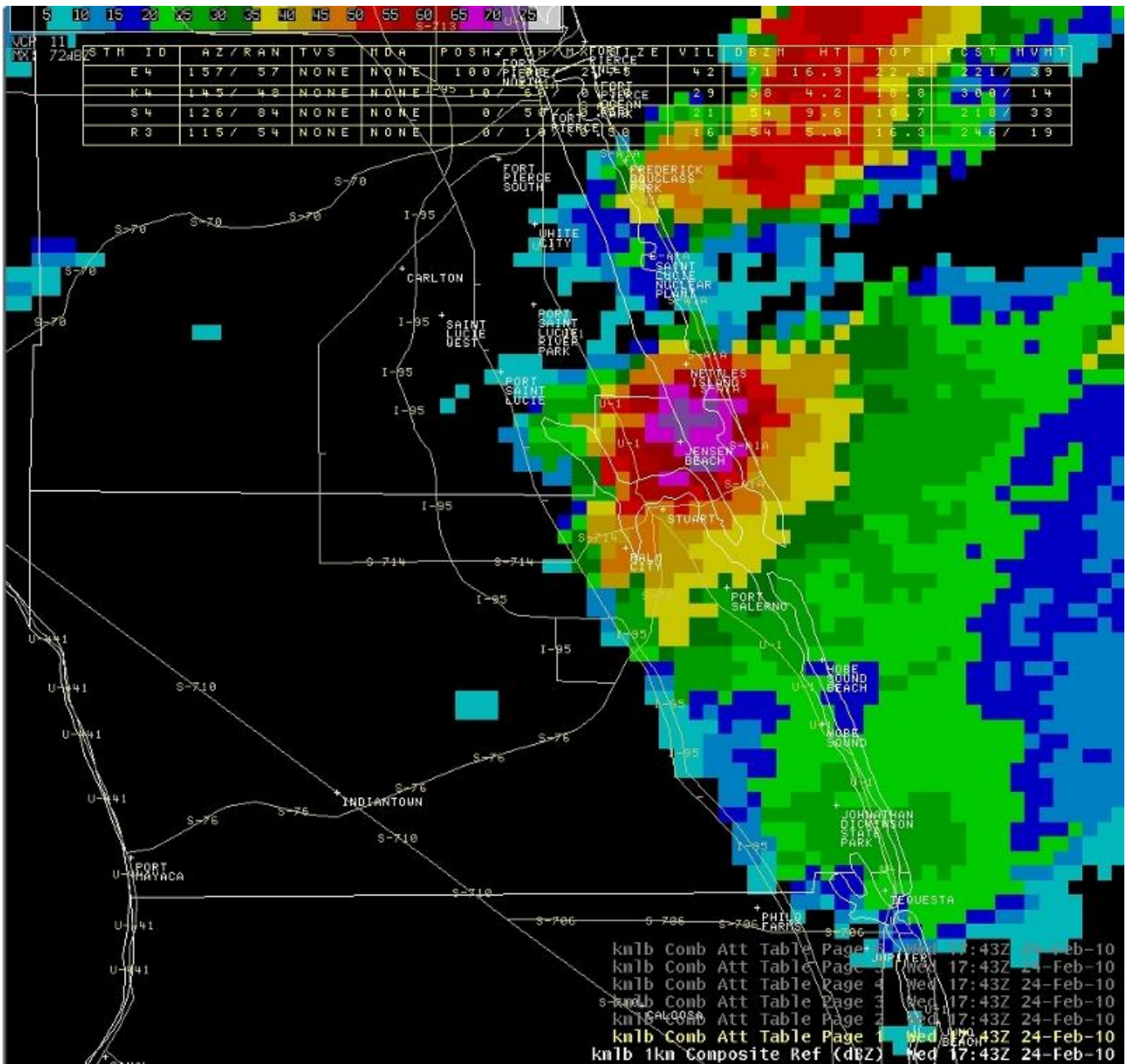
A weak low pressure area combined with an old frontal boundary over the Florida straits lifted slowly northeastward through the day toward East Central Florida. Deep moisture increased across the Treasure coast and south Florida with cold 500 mb temps from -13 to -16 at Cape Canaveral and Tampa. A fast moving upper trough moved toward the region with a 170 knot upper level jet and diffluent upper level flow. The treasure coast was able to get into the warm sector with surface temperatures into the mid to upper 70s. The cold mid level temperatures and surface heating allowed storms to develop with large hail and some damaging winds across Martin and southeast St. Lucie county. One long lived storm tracked northeast at 45 mph from just south of Port Mayaca across IndianTown to Palm City and Jensen Beach. The storms produced hail to 1.5 inches and injured two golfers in Palm City. A mesonet observation 5 miles south of Port St. Lucie reported a wind gust to 60 mph.

Here are a few composite radar reflectivity images from the KMLB 88D as the storm tracked across Martin county.

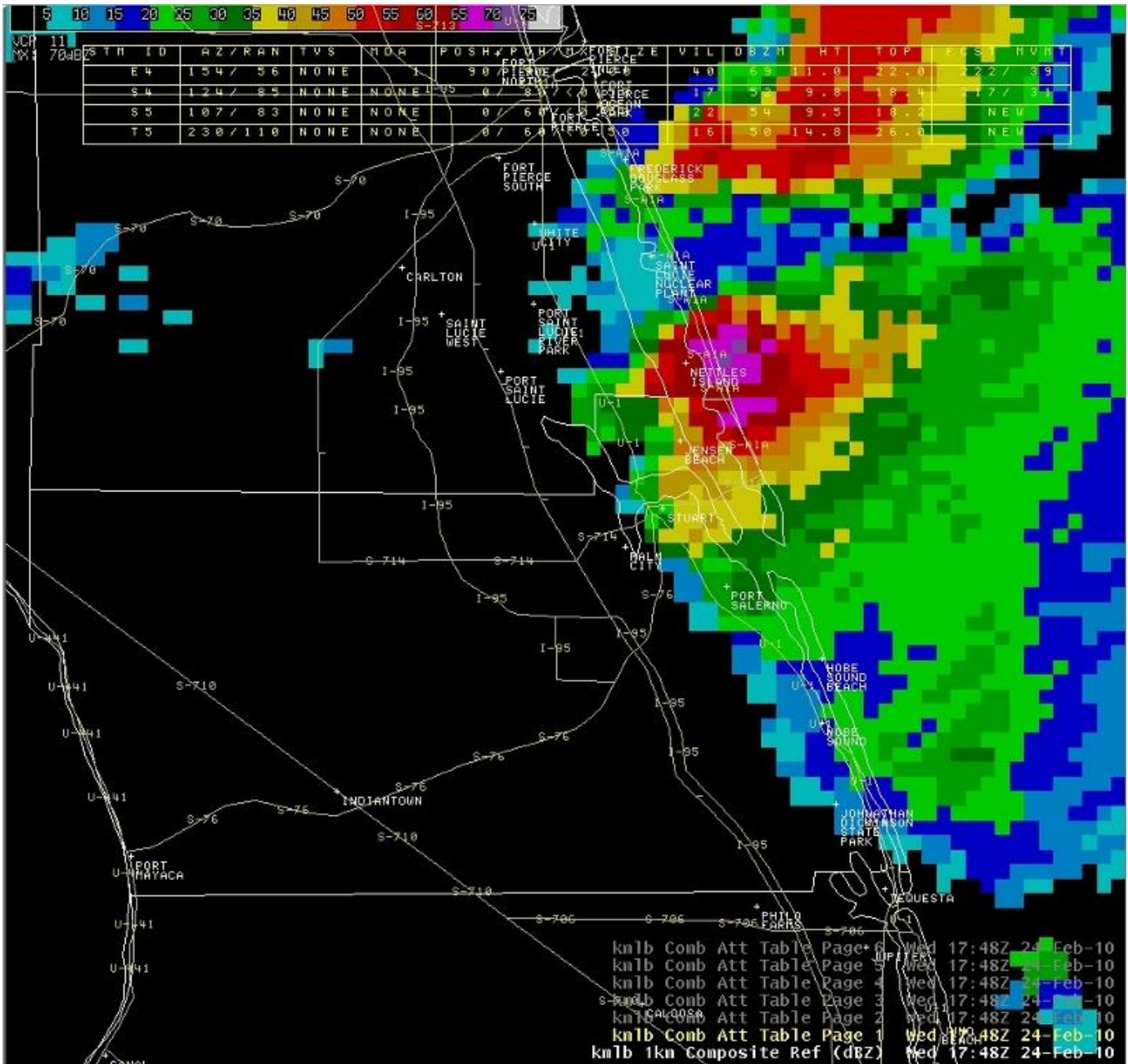








knlb Comb Att Table Page 4 Wed 17:43Z 24-Feb-10
 knlb Comb Att Table Page 5 Wed 17:43Z 24-Feb-10
 knlb Comb Att Table Page 6 Wed 17:43Z 24-Feb-10
 knlb Comb Att Table Page 7 Wed 17:43Z 24-Feb-10
 knlb Comb Att Table Page 8 Wed 17:43Z 24-Feb-10
 knlb Comb Att Table Page 9 Wed 17:43Z 24-Feb-10
 knlb 1kn Composite Ref (dBZ) Wed 17:43Z 24-Feb-10



Severe Thunderstorm Warnings

000
 WUUS52 KMLB 241705
 SVRMLB
 FLC085-241800-
 /O.NEW.KMLB.SV.W.0008.100224T1705Z-100224T1800Z/

BULLETIN - EAS ACTIVATION REQUESTED
 SEVERE THUNDERSTORM WARNING
 NATIONAL WEATHER SERVICE MELBOURNE FL
 1205 PM EST WED FEB 24 2010

THE NATIONAL WEATHER SERVICE IN MELBOURNE HAS ISSUED A

* SEVERE THUNDERSTORM WARNING FOR...
MARTIN COUNTY IN FLORIDA

* UNTIL 100 PM EST.

* AT 1157 AM EST...NATIONAL WEATHER SERVICE METEOROLOGISTS DETECTED A SEVERE THUNDERSTORM CAPABLE OF PRODUCING QUARTER SIZE HAIL...AND DAMAGING WINDS IN EXCESS OF 60 MPH. THIS STORM WAS LOCATED 12 MILES SOUTHWEST OF INDIANTOWN...OR 8 MILES SOUTH OF PORT MAYACA... AND MOVING NORTHEAST AT 45 MPH.

* OTHER LOCATIONS IN THE WARNING INCLUDE...BUT ARE NOT LIMITED TO... PALM CITY...PORT SALERNO...STUART...NORTH RIVER SHORES...ROCKY POINT AND JENSEN BEACH

PRECAUTIONARY/PREPAREDNESS ACTIONS...

SEVERE THUNDERSTORMS PRODUCE DAMAGING WINDS IN EXCESS OF 58 MILES AN HOUR AND OR LARGE DESTRUCTIVE HAIL. FREQUENT TO EXCESSIVE LIGHTNING AND VERY HEAVY RAIN WILL ALSO BE POSSIBLE. IF THE STORM APPROACHES YOU...SEEK SHELTER IN AN ENCLOSED BUILDING ON THE LOWEST FLOOR. KEEP AWAY FROM WINDOWS.

&&

LAT...LON 2720 8041 2720 8029 2727 8029 2727 8024
2724 8022 2726 8021 2725 8019 2718 8015
2718 8018 2716 8019 2716 8015 2713 8014
2696 8032 2696 8062

TIME...MOT...LOC 1705Z 220DEG 37KT 2693 8050

\$\$

RL

000

WUUS52 KMLB 241739

SVRMLB

FLC085-111-241815-

/O.NEW.KMLB.SV.W.0009.100224T1739Z-100224T1815Z/

BULLETIN - EAS ACTIVATION REQUESTED
SEVERE THUNDERSTORM WARNING
NATIONAL WEATHER SERVICE MELBOURNE FL
1239 PM EST WED FEB 24 2010

THE NATIONAL WEATHER SERVICE IN MELBOURNE HAS ISSUED A

* SEVERE THUNDERSTORM WARNING FOR...
NORTH CENTRAL MARTIN COUNTY IN FLORIDA
SOUTHEASTERN ST. LUCIE COUNTY IN FLORIDA

* UNTIL 115 PM EST.

* AT 1237 PM EST...NATIONAL WEATHER SERVICE METEOROLOGISTS DETECTED A SEVERE THUNDERSTORM CAPABLE OF PRODUCING GOLF BALL SIZE HAIL...AND DESTRUCTIVE WINDS TO 65 MPH. THIS STORM WAS LOCATED 2 MILES SOUTH OF PORT SAINT LUCIE. THIS STORM WAS MOVING NORTHEAST AT 45 MPH.

* OTHER LOCATIONS IN THE WARNING INCLUDE...BUT ARE NOT LIMITED TO...PORT SAINT LUCIE...NETTLES ISLAND...WAVELAND...SAINT LUCIE NUCLEAR PLANT AND INDIAN RIVER ESTATES

PRECAUTIONARY/PREPAREDNESS ACTIONS...

SEVERE THUNDERSTORMS PRODUCE DAMAGING WINDS IN EXCESS OF 58 MILES AN HOUR AND OR LARGE DESTRUCTIVE HAIL. FREQUENT TO EXCESSIVE LIGHTNING AND VERY HEAVY RAIN WILL ALSO BE POSSIBLE. IF THE STORM APPROACHES YOU...SEEK SHELTER IN AN ENCLOSED BUILDING ON THE LOWEST FLOOR. KEEP

AWAY FROM WINDOWS.

&&

LAT...LON 2718 8018 2720 8019 2718 8018 2708 8029
2723 8046 2740 8029 2739 8029 2734 8027
2737 8026 2741 8028 2743 8026 2729 8020
2730 8020 2721 8017 2720 8016
TIME...MOT...LOC 1737Z 180DEG 0KT 2733 8039

\$\$

15

000
WUUS52 KMLB 242008
SVRMLB
FLC085-242045-
/O.NEW.KMLB.SV.W.0010.100224T2008Z-100224T2045Z/

BULLETIN - EAS ACTIVATION REQUESTED
SEVERE THUNDERSTORM WARNING
NATIONAL WEATHER SERVICE MELBOURNE FL
308 PM EST WED FEB 24 2010

THE NATIONAL WEATHER SERVICE IN MELBOURNE HAS ISSUED A

- * SEVERE THUNDERSTORM WARNING FOR...
SOUTHEASTERN MARTIN COUNTY IN FLORIDA
- * UNTIL 345 PM EST.
- * AT 307 PM EST...NATIONAL WEATHER SERVICE METEOROLOGISTS DETECTED A
SEVERE THUNDERSTORM CAPABLE OF PRODUCING QUARTER SIZE HAIL...AND
DAMAGING WINDS IN EXCESS OF 60 MPH. THIS STORM WAS LOCATED 13
MILES WEST OF JOHNATHAN DICKINSON STATE PARK...OR 8 MILES EAST OF
INDIANTOWN...AND MOVING EAST AT 45 MPH.
- * THE SEVERE THUNDERSTORM WILL BE NEAR...
JONATHAN DICKINSON STATE PARK...AND HOBE SOUND BY 325 PM EST...

PRECAUTIONARY/PREPAREDNESS ACTIONS...

SEVERE THUNDERSTORMS PRODUCE DAMAGING WINDS IN EXCESS OF 58 MILES AN
HOUR AND OR LARGE DESTRUCTIVE HAIL. FREQUENT TO EXCESSIVE LIGHTNING
AND VERY HEAVY RAIN WILL ALSO BE POSSIBLE. IF THE STORM APPROACHES
YOU...SEEK SHELTER IN AN ENCLOSED BUILDING ON THE LOWEST FLOOR. KEEP
AWAY FROM WINDOWS.

&&

LAT...LON 2706 8044 2713 8014 2712 8013 2701 8008
2697 8007 2697 8014 2695 8015 2696 8041
TIME...MOT...LOC 2007Z 257DEG 39KT 2699 8031

\$\$

15

Local Storm Report for 2/24/10

000
NWUS52 KMLB 250145

LSRMLB

PRELIMINARY LOCAL STORM REPORT...SUMMARY
NATIONAL WEATHER SERVICE MELBOURNE FL
845 PM EST WED FEB 24 2010

..TIME... ..EVENT... ..CITY LOCATION... ..LAT.LON...
..DATE... ..MAG.... ..COUNTY LOCATION..ST.. ..SOURCE....
..REMARKS..

1220 PM TSTM WND DMG 1 W INDIANTOWN 27.02N 80.48W
02/24/2010 MARTIN FL EMERGENCY MNGR

MULTIPLE TREES DOWN ON SW FARM ROAD BETWEEN CARRIER
STREET AND 169TH AVE.

1235 PM TSTM WND GST 5 S PORT SAINT LUCIE 27.21N 80.35W
02/24/2010 M60.00 MPH ST. LUCIE FL MESONET

52 KNOTS

1235 PM HAIL PALM CITY 27.17N 80.27W
02/24/2010 E1.50 INCH MARTIN FL EMERGENCY MNGR

*** 2 INJ *** TWO GOLFERS INJURED BY HAIL AND BLEEDING
FROM HEAD HAIL SIZE ESTIMATED.

1235 PM TSTM WND DMG 5 WSW PALM CITY 27.15N 80.35W
02/24/2010 MARTIN FL EMERGENCY MNGR

UTILITY SHED HEAVILY DAMAGED AT 4704 SW 72ND DRIVE PALM
CITY.

1240 PM HAIL 2 W JENSEN BEACH 27.24N 80.27W
02/24/2010 M0.70 INCH MARTIN FL FIRE DEPT/RESCUE

MARTIN COUNTY FIRE STATION IN JENSEN BEACH REPORTED PEA
TO DIME SIZE HAIL AND WIND GUSTS TO 40 MPH.

1248 PM HAIL 2 ENE JENSEN BEACH 27.26N 80.20W
02/24/2010 M0.88 INCH MARTIN FL EMERGENCY MNGR

LIFEGUARD REPORTED NICKEL SIZE HAIL AT JENSEN PUBLIC
BEACH.

0325 PM HAIL JOHNATHAN DICKINSON STA 27.01N 80.12W
02/24/2010 E0.75 INCH MARTIN FL PARK/FOREST SRVC

PARK DRIVE AT THE RAILROAD TRACKS

0355 PM TSTM WND GST CAPE CANAVERAL 28.39N 80.60W
02/24/2010 M43.00 MPH BREVARD FL OTHER FEDERAL

USAF WIND TOWER NUMBER 19 AT 54 FEET ELEVATION REPORTED
37 KNOTS

0432 PM TSTM WND GST CAPE CANAVERAL 28.39N 80.60W
02/24/2010 M43.00 MPH BREVARD FL OTHER FEDERAL

USAF TOWER 19

&&

\$\$

JRC/MRT