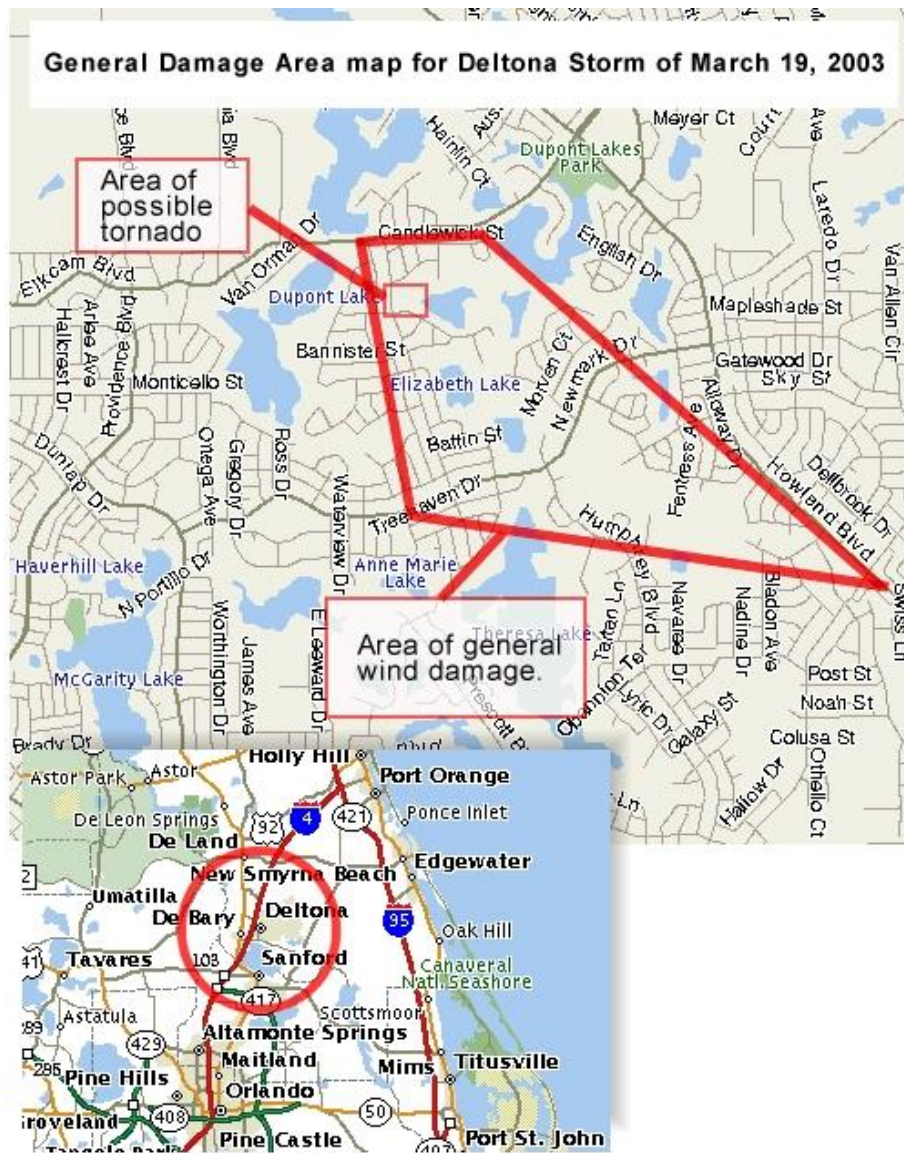


Deltona Storm of March 19, 2003

At 6:25 PM a severe thunderstorm warning was issued for the Deltona area of central Volusia County. Large hail began at 6:30 PM, and radar began to indicate a possible tornado, prompting a tornado warning to be issued for the area at 6:41 PM. Reports of more large hail, tree damage, and possible tornadoes continued to filter in, and radar continued to show that a tornado was possible as the parent thunderstorm moved east at 20 mph through 8 PM.

A storm survey conducted the next day by National Weather Service personnel uncovered minimal evidence of tornadic damage in the area, but widespread evidence of tree damage due to a downburst of winds from north to south across the southeast section of Deltona, in the direction of Osteen. Minimal evidence of a tornado was visible in the box on the map below. This was only evident in the direction to which a few trees were pushed and not in structural damage of any kind.

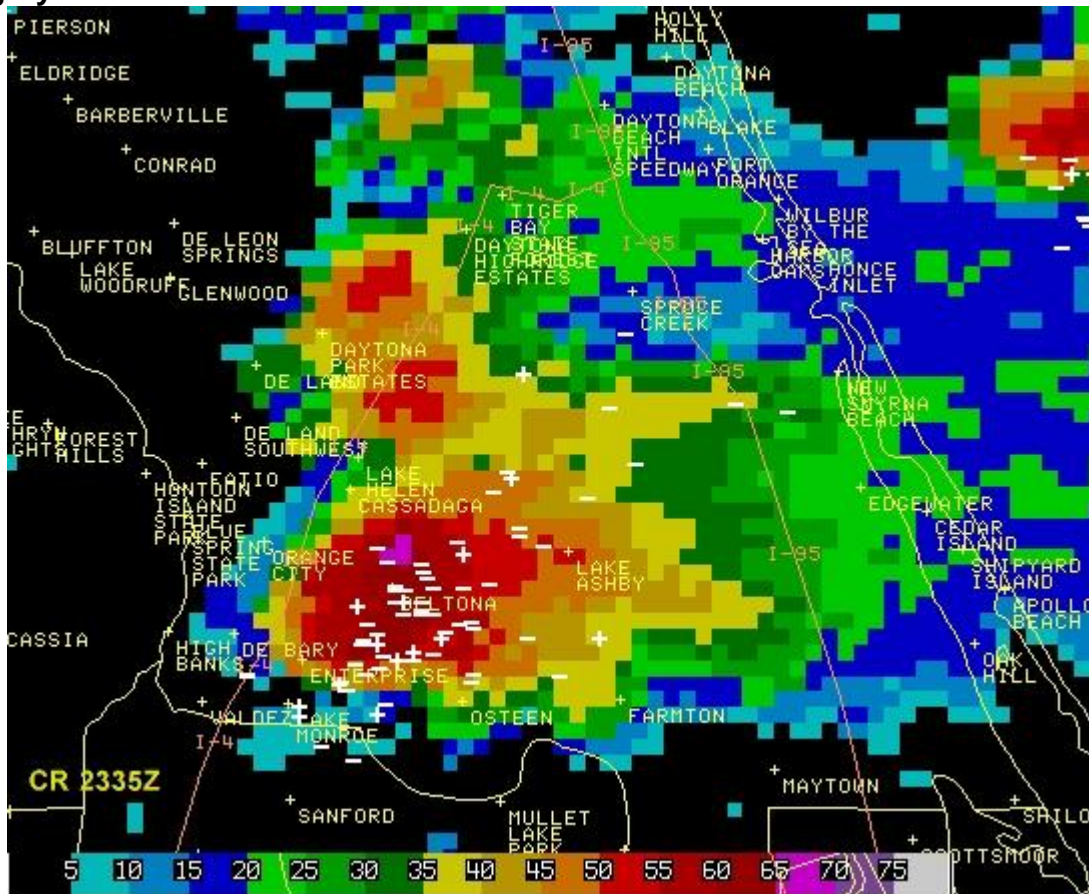
Any structural damage seen by the survey team was evidently the result of falling trees, and not by direct effect of wind itself.



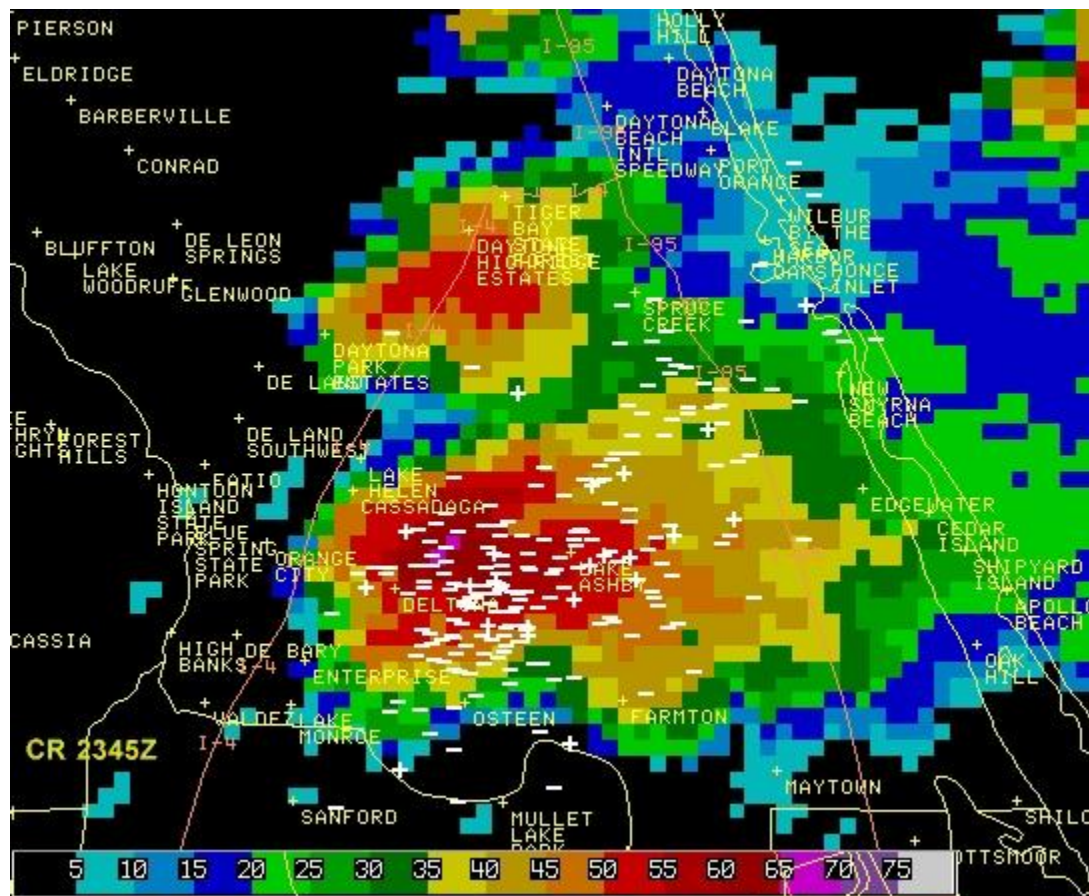
A few damage pictures:



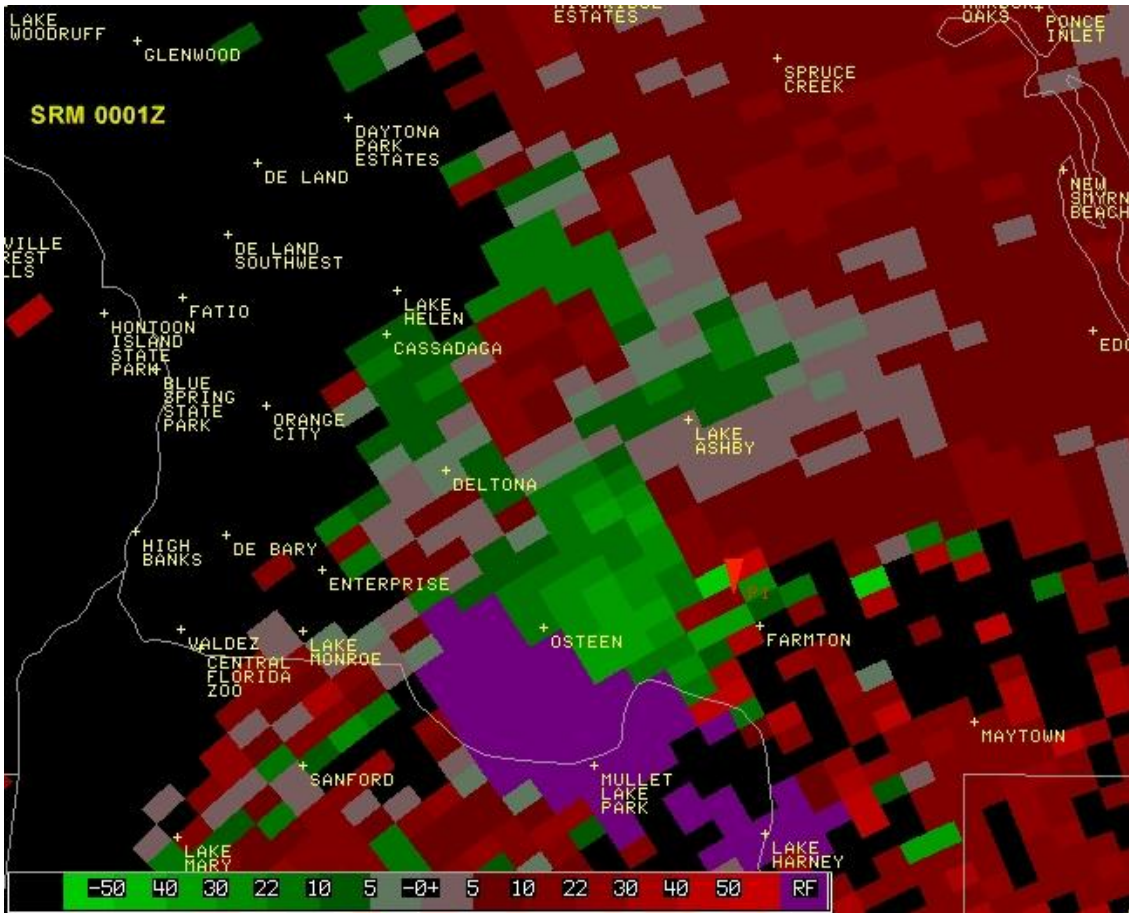
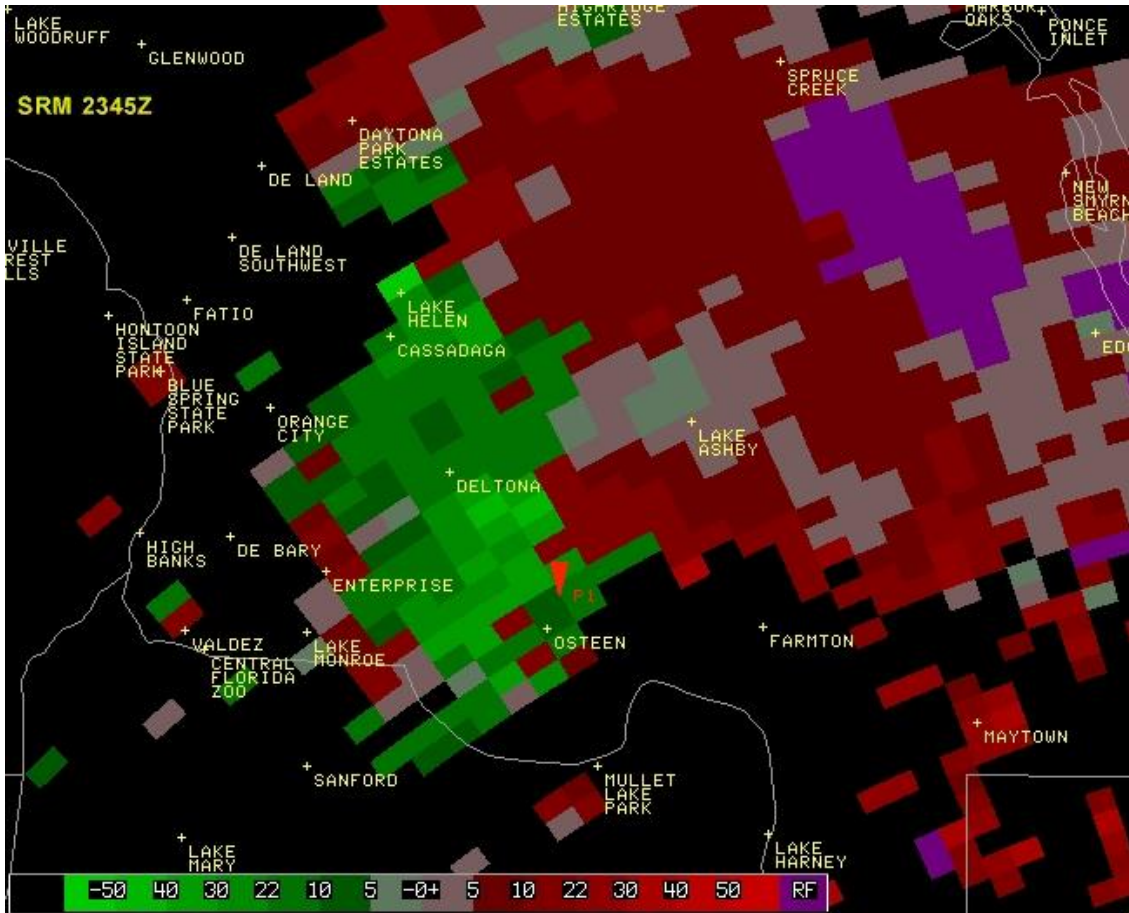
Radar Imagery:



Composite Reflectivity at 6:35 PM EST



Composite Reflectivity at 6:45 PM EST



Products Issued:

WUUS52 KMLB 192323
SVRMLB
FLC127-200015-

BULLETIN - EAS ACTIVATION REQUESTED
SEVERE THUNDERSTORM WARNING
NATIONAL WEATHER SERVICE MELBOURNE FL
625 PM EST WED MAR 19 2003

THE NATIONAL WEATHER SERVICE IN MELBOURNE HAS ISSUED A

* SEVERE THUNDERSTORM WARNING FOR...
CENTRAL VOLUSIA COUNTY
IN EAST CENTRAL FLORIDA

* UNTIL 715 PM EST

* AT 625 PM EST...NATIONAL WEATHER SERVICE DOPPLER RADAR INDICATED
A CLUSTER OF SEVERE THUNDERSTORM OVER ORANGE CITY AND DELTONA...
MOVING NORTHEAST AT 5 TO 10 MPH.

* THE SEVERE THUNDERSTORMS WILL BE...
NEAR CASSADAGA...LAKE HELEN AT 635 PM EST

SEVERE THUNDERSTORMS PRODUCE DAMAGING WINDS IN EXCESS OF 58 MILES AN
HOUR...DESTRUCTIVE HAIL...DEADLY LIGHTNING AND VERY HEAVY RAIN. IF
THE STORM APPROACHES YOU...MOVE TO AN INTERIOR ROOM ON THE LOWEST
FLOOR.

LAT...LON 2893 8140 2879 8127 2897 8091 2919 8110

\$\$
CRISTALDI

WFUS52 KMLB 192343
TORMLB
FLC127-200015-

BULLETIN - EAS ACTIVATION REQUESTED
TORNADO WARNING
NATIONAL WEATHER SERVICE MELBOURNE FL
641 PM EST WED MAR 19 2003

THE NATIONAL WEATHER SERVICE IN MELBOURNE HAS ISSUED A

* TORNADO WARNING FOR...
SOUTHERN VOLUSIA COUNTY
IN EAST CENTRAL FLORIDA

* UNTIL 715 PM EST

* AT 641 PM EST...NATIONAL WEATHER SERVICE DOPPLER RADAR INDICATED
A SEVERE THUNDERSTORM CAPABLE OF PRODUCING A TORNADO OVER
DELTONA...MOVING NORTHEAST AT 5 TO 10 MPH.

* THE STORM IS EXPECTED TO...
MOVE OVER DELTONA AND TOWARD LAKE ASHBY.

THIS STORM SHOWED SIGNS OF ROTATION AND COULD PRODUCE A TORNADO AT
ANY TIME. DONT GET CAUGHT OFF GUARD! THE STORM IS ALSO PRODUCING
EXCESSIVE LIGHTNING.

IF YOU ARE IN THE PATH OF A TORNADO...THE SAFEST PLACE IS IN A STRONG BUILDING ON THE LOWEST FLOOR. MOVE TO AN INTERIOR ROOM SUCH AS A BATHROOM OR CLOSET. KEEP AWAY FROM WINDOWS. IF NECESSARY...GET UNDER A WORKBENCH OR OTHER PIECE OF STURDY FURNITURE. USE BLANKETS OR PILLOWS TO COVER YOUR BODY.

LAT...LON 2894 8131 2880 8118 2902 8082 2920 8098

\$\$
52

WFUS52 KMLB 200013
TORMLB
FLC127-200045-

BULLETIN - EAS ACTIVATION REQUESTED
TORNADO WARNING
NATIONAL WEATHER SERVICE MELBOURNE FL
713 PM EST WED MAR 19 2003

THE NATIONAL WEATHER SERVICE IN MELBOURNE HAS ISSUED A

* TORNADO WARNING FOR...
VOLUSIA COUNTY
IN EAST CENTRAL FLORIDA

* UNTIL 745 PM EST

* AT 713 PM EST...NATIONAL WEATHER SERVICE DOPPLER RADAR INDICATED
A TORNADO 5 MILES NORTHEAST OF OSTEEN...MOVING NORTHEAST AT 15 MPH.

* THE STORM IS EXPECTED TO CROSS RURAL VOLUSIA COUNTY AND CROSS I-95
WEST OF EDGEWATER THROUGH 745 PM

THE IMMEDIATE DANGER OF A TORNADO IS HIGH. VOLUSIA COUNTY EMO HAS AN UNCONFIRMED REPORT OF A TORNADO TOUCHING DOWN IN NORTHEAST DELTONA. THIS STORM ALSO HAS A HISTORY OF PRODUCING WIND DAMAGE AND LARGE HAIL.

PEOPLE IN THE PATH OF THIS STORM ARE URGED TO QUICKLY PREPARE FOR ITS APPROACH. THIS IS A DANGEROUS SITUATION! ACT NOW AS SECONDS CAN SAVE LIVES!

IF YOU ARE IN THE PATH OF A TORNADO...THE SAFEST PLACE IS IN A STRONG BUILDING ON THE LOWEST FLOOR. MOVE TO AN INTERIOR ROOM SUCH AS A BATHROOM OR CLOSET. KEEP AWAY FROM WINDOWS. IF NECESSARY...GET UNDER A WORKBENCH OR OTHER PIECE OF STURDY FURNITURE. USE BLANKETS OR PILLOWS TO COVER YOUR BODY. ABANDON YOUR MOBILE HOME OR RV FOR MORE SUBSTANTIAL SHELTER. IF YOU ARE CAUGHT OUTSIDE...GET INTO AN UNFLOODED DITCH OR LOW SPOT AND COVER YOUR HEAD WITH YOUR HANDS AND ARMS. ABANDON YOUR VEHICLE IF THE TORNADO IS NEARBY.

TORNADOES AT NIGHT ARE DIFFICULT TO SEE. WATCH FOR THE POPPING OF ELECTRIC LINES AND TRANSFORMERS OR LISTEN FOR THE SOUND OF LOUD RUMBLING AS THAT OF AN APPROACHING FREIGHT TRAIN. TORNADOES ARE OFTEN ASSOCIATED WITH STORMS WHICH ALSO PRODUCE LARGE HAIL AND EXCESSIVE LIGHTNING.

LAT...LON 2890 8124 2877 8109 2913 8061 2932 8082

WFUS52 KMLB 200044
TORMLB

FLC127-200115-

BULLETIN - EAS ACTIVATION REQUESTED
TORNADO WARNING
NATIONAL WEATHER SERVICE MELBOURNE FL
743 PM EST WED MAR 19 2003

THE NATIONAL WEATHER SERVICE IN MELBOURNE HAS ISSUED A

* TORNADO WARNING FOR...
SOUTHEASTERN VOLUSIA COUNTY
IN EAST CENTRAL FLORIDA

* UNTIL 815 PM EST

* AT 743 PM EST...NATIONAL WEATHER SERVICE DOPPLER RADAR INDICATED A
TORNADO 6 MILES WEST OF OAK HILL...OR ABOUT 6 MILES NORTHEAST OF
MAYTOWN...MOVING EAST AT 20 MPH.

* THE TORNADO IS EXPECTED TO BE...
NEAR OAK HILL...APOLLO BEACH...ELDORA AT 755 PM EST

IF YOU ARE IN THE PATH OF A TORNADO...THE SAFEST PLACE IS IN A STRONG
BUILDING ON THE LOWEST FLOOR. MOVE TO AN INTERIOR ROOM SUCH AS A
BATHROOM OR CLOSET. KEEP AWAY FROM WINDOWS. IF NECESSARY...GET UNDER
A WORKBENCH OR OTHER PIECE OF STURDY FURNITURE. USE BLANKETS OR
PILLOWS TO COVER YOUR BODY. ABANDON YOUR MOBILE HOME OR RV FOR MORE
SUBSTANTIAL SHELTER. IF YOU ARE CAUGHT OUTSIDE...GET INTO AN
UNFLOODED DITCH OR LOW SPOT AND COVER YOUR HEAD WITH YOUR HANDS AND
ARMS. ABANDON YOUR VEHICLE IF THE TORNADO IS NEARBY.

TORNADOES AT NIGHT ARE DIFFICULT TO SEE. WATCH FOR THE POPPING OF
ELECTRIC LINES AND TRANSFORMERS OR LISTEN FOR THE SOUND OF LOUD
RUMBLING AS THAT OF AN APPROACHING FRIEGHT TRAIN. TORNADOES ARE OFTEN
ASSOCIATED WITH STORMS WHICH ALSO PRODUCE LARGE HAIL AND EXCESSIVE
LIGHTNING.

LAT...LON 2896 8103 2878 8101 2880 8073 2899 8075

WWUS52 KMLB 192353
SVSMLB
FLC127-200015-

SEVERE WEATHER STATEMENT
NATIONAL WEATHER SERVICE MELBOURNE FL
654 PM EST WED MAR 19 2003

...A TORNADO WARNING CONTINUES FOR SOUTHERN VOLUSIA COUNTY UNTIL 715
PM EST...

AT 653 PM EST NATIONAL WEATHER SERVICE DOPPLER RADAR INDICATED A
SEVERE THUNDERSTORM CAPABLE OF PRODUCING A TORNADO JUST NORTHEAST OF
DELTONA...MOVING NORTHEAST AT 5 TO 10 MPH. THE STORM WILL MOVE TO
AREAS BETWEEN LAKE ASHBY AND STATE ROAD 44 IN SOUTH CENTRAL VOLUSIA
COUNTY.

LARGE HAIL...DAMAGING THUNDERSTORM WINDS AND EXCESSIVE LIGHTNING ARE
ALSO EXPECTED WITH THIS STORM. PERSONS IN THE PATH OF THE STORM
SHOULD TAKE COVER IMMEDIATELY!

STAY TUNED TO LOCAL MEDIA OUTLETS OR NOAA WEATHER RADIO FOR THE
LATEST SEVERE WEATHER INFORMATION.

LAT...LON 2895 8129 2883 8115 2907 8083 2923 8101

\$\$
52

WWUS52 KMLB 200040
SVSMLB
FLC127-200045-

SEVERE WEATHER STATEMENT
NATIONAL WEATHER SERVICE MELBOURNE FL
740 PM EST WED MAR 19 2003

...A TORNADO WARNING CONTINUES FOR VOLUSIA COUNTY UNTIL 745 PM EST...

AT 736 PM EST NATIONAL WEATHER SERVICE DOPPLER RADAR INDICATED A
TORNADO 6 MILES NORTH OF MAYTOWN AND 8 MILES WEST OF OAK HILL MOVING
EAST TO NORTHEAST AT 20 MPH.

* THE STORM IS EXPECTED TO PASS NEAR...
SOUTH EDGEWATER AND OAK HILL AROUND 745 PM EST

A WEATHER SPOTTER SIGHTED A TORNADO ON THE GROUND AT 723 PM ON THE
EAST SIDE OF DELTONA.

TAKE THIS WARNING SERIOUSLY!!! THIS STORM HAS A HISTORY OF PRODUCING
WIND DAMAGE AND LARGE HAIL. IN ADDITION...TWO REPORTS OF TORNADIC
DAMAGE HAVE BEEN RECEIVED FROM THIS STORM.

STAY TUNED TO LOCAL MEDIA OUTLETS OR NOAA WEATHER RADIO FOR THE
LATEST SEVERE WEATHER INFORMATION.

LAT...LON 2890 8124 2877 8109 2913 8061 2932 8082

\$\$

WWUS52 KMLB 200057
SVSMLB
FLC009-127-200115-

SEVERE WEATHER STATEMENT
NATIONAL WEATHER SERVICE MELBOURNE FL
755 PM EST WED MAR 19 2003

...A TORNADO WARNING CONTINUES FOR SOUTHEASTERN VOLUSIA COUNTY
UNTIL 815 PM...

...SEVERE THUNDERSTORM EXITING NORTHERN BREVARD COUNTY...

...SEVERE STORM CELLS ABOUT TO MERGE OVER SOUTHEAST VOLUSIA COUNTY...

AT 755 PM EST NATIONAL WEATHER SERVICE DOPPLER RADAR INDICATED A
TORNADO NEAR THE OAK HILL AREA. ANOTHER SEVERE STORMS CELL MOVING
OUT OF BREVARD COUNTY WAS ALSO MOVING TOWARD OAK HILL.

IF YOU LIVE ANYWHERE FROM SOUTH EDGEWATER TO OAK HILL AND APOLLO
BEACH...YOU NEED TO TAKE COVER NOW!!!

STAY TUNED TO LOCAL MEDIA OUTLETS OR NOAA WEATHER RADIO FOR THE
LATEST SEVERE WEATHER INFORMATION.

LAT...LON 2904 8090 2847 8052 2821 8062 2791 8046

\$\$

WWUS52 KMLB 200117
SVSMLB
FLC127-200130-

SEVERE WEATHER STATEMENT
NATIONAL WEATHER SERVICE MELBOURNE FL
816 PM EST WED MAR 19 2003

...THE TORNADO WARNING FOR EXTREME SOUTHEAST VOLUSIA COUNTY HAS
BEEN ALLOWED TO EXPIRE...

AT 816 PM EST NATIONAL WEATHER SERVICE RADAR INDICATED THAT THE
SEVERE THUNDERSTORM AND TORNADO HAD MOVED OFFSHORE SOUTHEAST VOLUSIA
COUNTY...THUS THE WARNING HAS BEEN ALLOWED TO EXPIRE.

STAY TUNED TO LOCAL MEDIA OUTLETS OR NOAA WEATHER RADIO FOR THE
LATEST SEVERE WEATHER INFORMATION.

\$\$

CRISTALDI

NWUS52 KMLB 200309
LSRMLB

PRELIMINARY LOCAL STORM REPORT
NATIONAL WEATHER SERVICE MELBOURNE FL
1008 PM EST WED MAR 19 2003

TIME (EST)CITY LOCATION.....	STATE	...EVENT/REMARKS...
COUNTY LOCATION.....		
630 PM 03/19/03	DELTONA VOLUSIA	FL	1.00 INCH HAIL ONE INCH HAIL REPORTED BY SKYWARN SPOTTER.
630 PM 03/19/03	DELTONA VOLUSIA	FL	62 MPH WIND GUST SPOTTER REPLAYED A REPORT OF A MEASRUED 62 MPH WIND GUST AT 1969 ALLOWAY DRIVE.
640 PM 03/19/03	DELTONA VOLUSIA	FL	1.00 INCH HAIL SKYWARN SPOTTER REPORTED 1 INCH HAIL.
640 PM 03/19/03	DELTONA VOLUSIA	FL	0.75 INCH HAIL PUBLIC REPORT OF DIME SIZE HAIL NEAR THE CORNER OF ELKCAM AND PROVIDENCE BLVDS.
655 PM 03/19/03	DELTONA VOLUSIA	FL	0.88 INCH HAIL HAIL UP TO NICKEL SIZE LASTED FOR 15 MINUTES. PUBLIC REPORT.
715 PM 03/19/03	DELTONA VOLUSIA	FL	TORNADO TIME ESTIMATED. VOLUSIA

COUNTY EMO REPORTED A
POSSIBLE TORNADO TOUCHING
DOWN ON EAST SIDE OF
DELTONA. NUMEROUS TREES
AND POWER LINES DOWN IN
THE CITY. BETWEEN 2 AND 4
HOMES SUFFERED DAMAGE.

723 PM DELTONA
03/19/03 VOLUSIA

FL TORNADO
SPOTTER RELAYED A REPORT
OF A TORNADO TOUCHING
DOWN AT THE INTERSECTION
OF HOWLAND BLVD AND
ELKCAM BLVD ON THE EAST
SIDE OF DELTONA

755 PM SCOTTSMOOR
03/19/03 BREVARD

FL 0.88 INCH HAIL
COOP OBSERVER REPORTED
NICKEL SIZE HAIL.

759 PM OAK HILL
03/19/03 VOLUSIA

FL 0.75 INCH HAIL
DIME SIZE HAIL AT MILE
MARKER 247 ON I-95 NEAR
OAK HILL. HAM REPORT.

800 PM OAK HILL
03/19/03 VOLUSIA

FL WIND DAMAGE
POWER LINES DOWN IN THE
OAK HILL AREA. FROM
VOLUSIA COUNTY S.O.