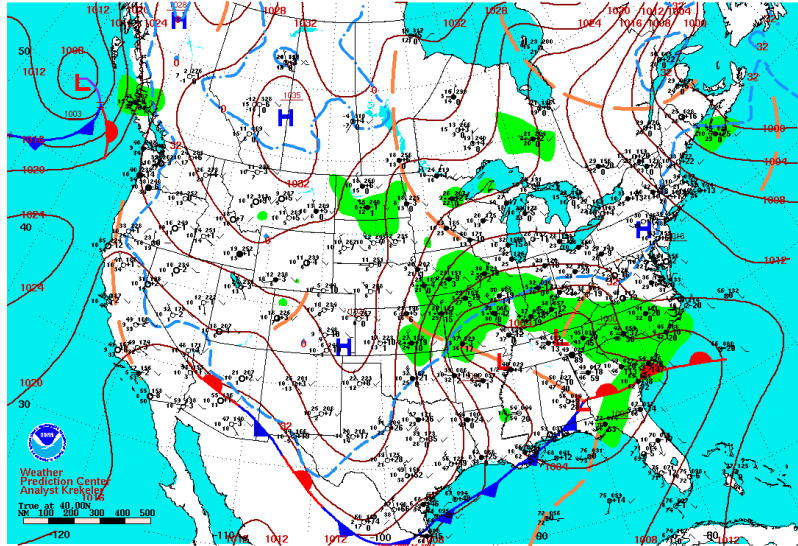


Severe Thunderstorms move across Lake, Orange and northern Brevard counties

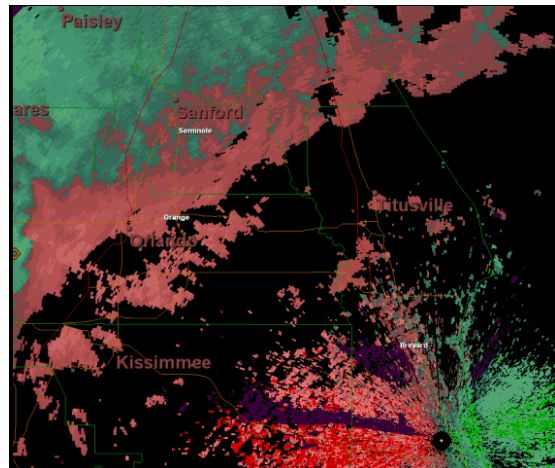
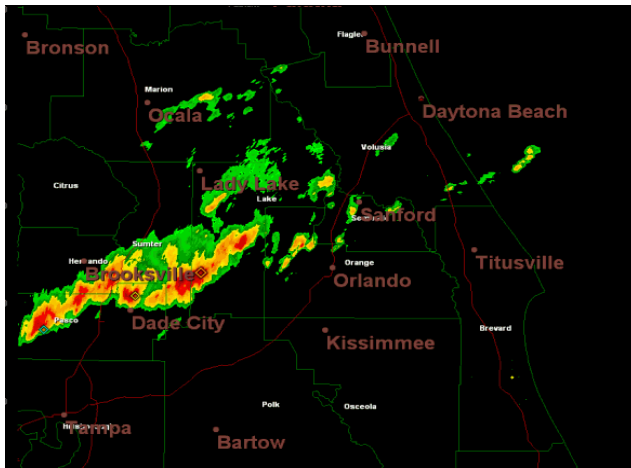
Sunday, March 24 2013

A low pressure system developed over the Gulf of Mexico over the weekend of March 23-24, 2013. The low became enhanced by a strong upper level jet as it tracked across the southern U.S. A prefrontal squall line developed ahead of the trailing cold front and pushed across East Central Florida during Sunday afternoon. The squall line produced a large swath of wind damage as it passed, with numerous reports of damaging thunderstorm wind gusts, along with a few reports of large hail.



Surface Weather Map and Station Weather at 7:00 A.M. E.S.T.

[Click image for reflectivity and Storm Relative Velocity Loops](#)

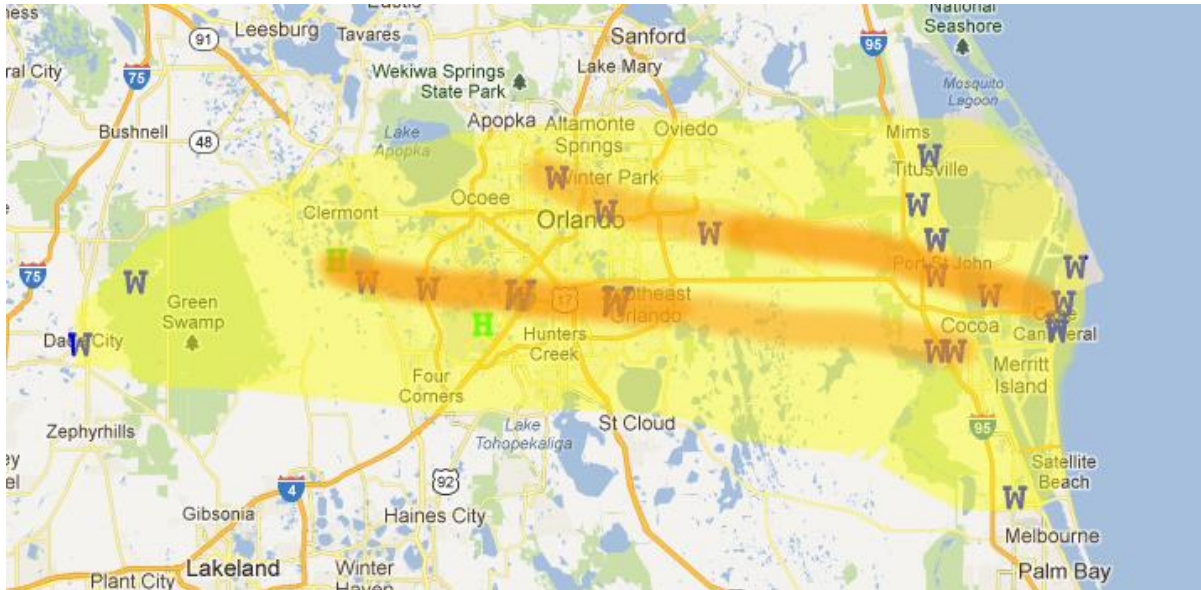


Damage Path

NWS GROUND SURVEYS CONDUCTED ON MONDAY MARCH 25 INDICATED STORM DAMAGE WAS DUE TO A LARGE SWATH OF STRAIGHT LINE THUNDERSTORM WINDS. WIND SPEEDS WERE ESTIMATED TO RANGE FROM 60 MPH TO IN EXCESS OF 80 MPH...REACHING FROM NEAR LAKE LOUISA STATE PARK ACROSS ORANGE AND AND INTO CENTRAL/NORTHERN BREVARD COUNTY.

AN ADDITIONAL SURVEY TUESDAY MARCH 26 EXAMINED DAMAGE IN WEST COCOA...MERRITT ISLAND AND CAPE CANAVERAL AND ALSO INDICATED STRAIGHT LINE WINDS OF 60 TO 75 MPH.

NO EVIDENCE OF TORNADOES WERE OBSERVED IN THE DAMAGE PATTERNS.



Click on the image to go to clickable damage map from SPC. The Orange areas indicate swath of most concentrated damage reports. Yellow swath shows the larger area where damage reports were received.

Damage Pictures (Lake Louisa area of Lake County)





(photos courtesy Lake County Emergency Management and State of Florida Emergency Management)

Damage Pictures (Orlando Area of Orange County)



(photos above courtesy SkyWarn Spotter Melvin Liwag)



(photos above courtesy City of Orlando Emergency Management)

Damage Pictures (Brevard County)



Radio Station WMEL in Cocoa Fl (photo from NWS Survey)

Click on Links Below for:

[Tornado Warnings](#)

[Severe Thunderstorm Warnings](#)

[Severe Weather Statements](#)

[Local Storm Reports](#)

Last update: 4/2/13