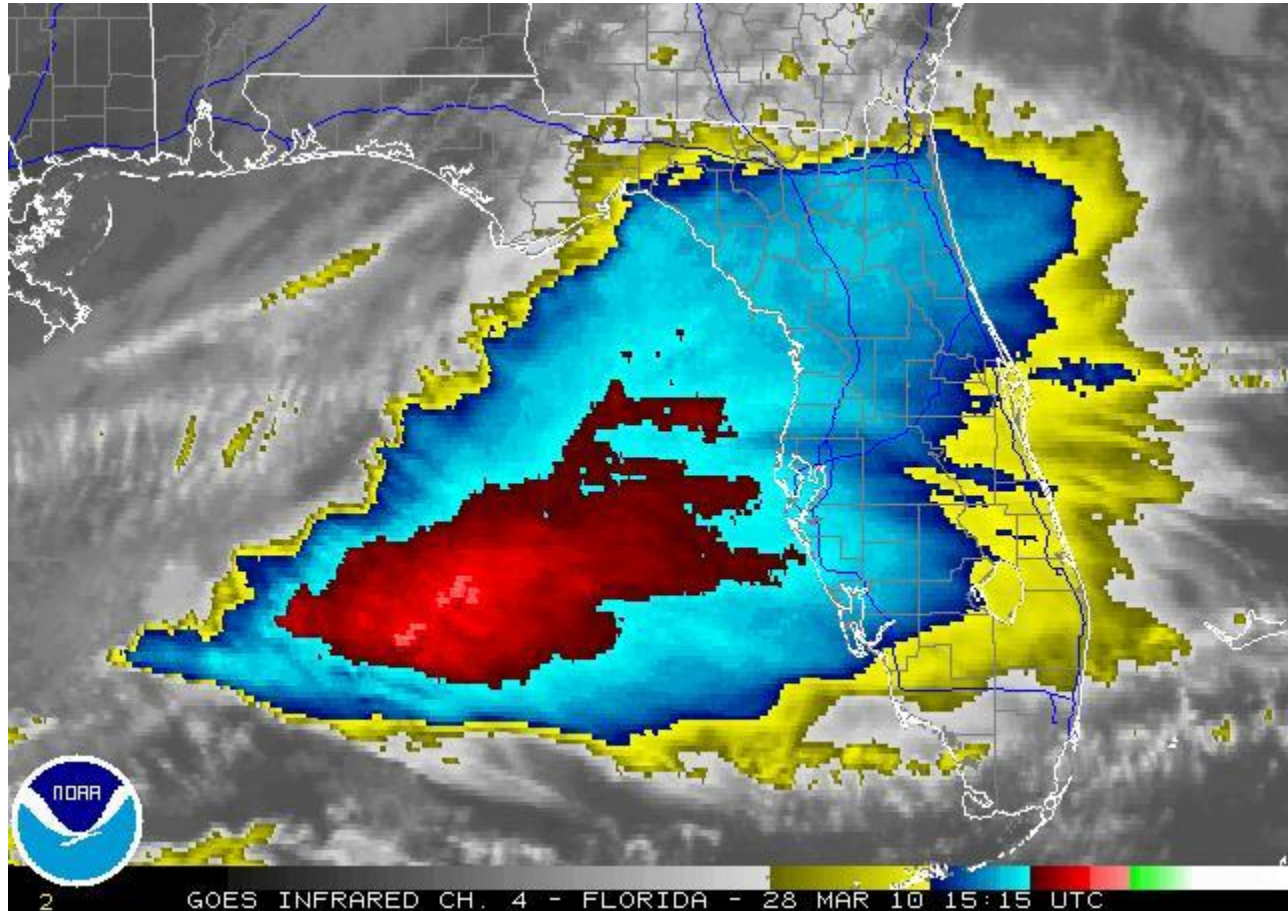


## EF-0 Tornado March 28, 2010

A line of strong to severe thunderstorms pushed through east central Florida during the afternoon and evening of March 28, 2010. Storms approached the east coast from the interior and encountered southeasterly winds, allowing low level wind shear to become enhanced. Several storms exhibited rotation and a minimal EF-0 tornado with maximum winds estimated at 60 mph touched down at 6 pm starting near the intersection of Eau Gallie Blvd and Interstate 95 in Melbourne. A tornado warning was issued by NWS Melbourne for the affected area at 517 pm.

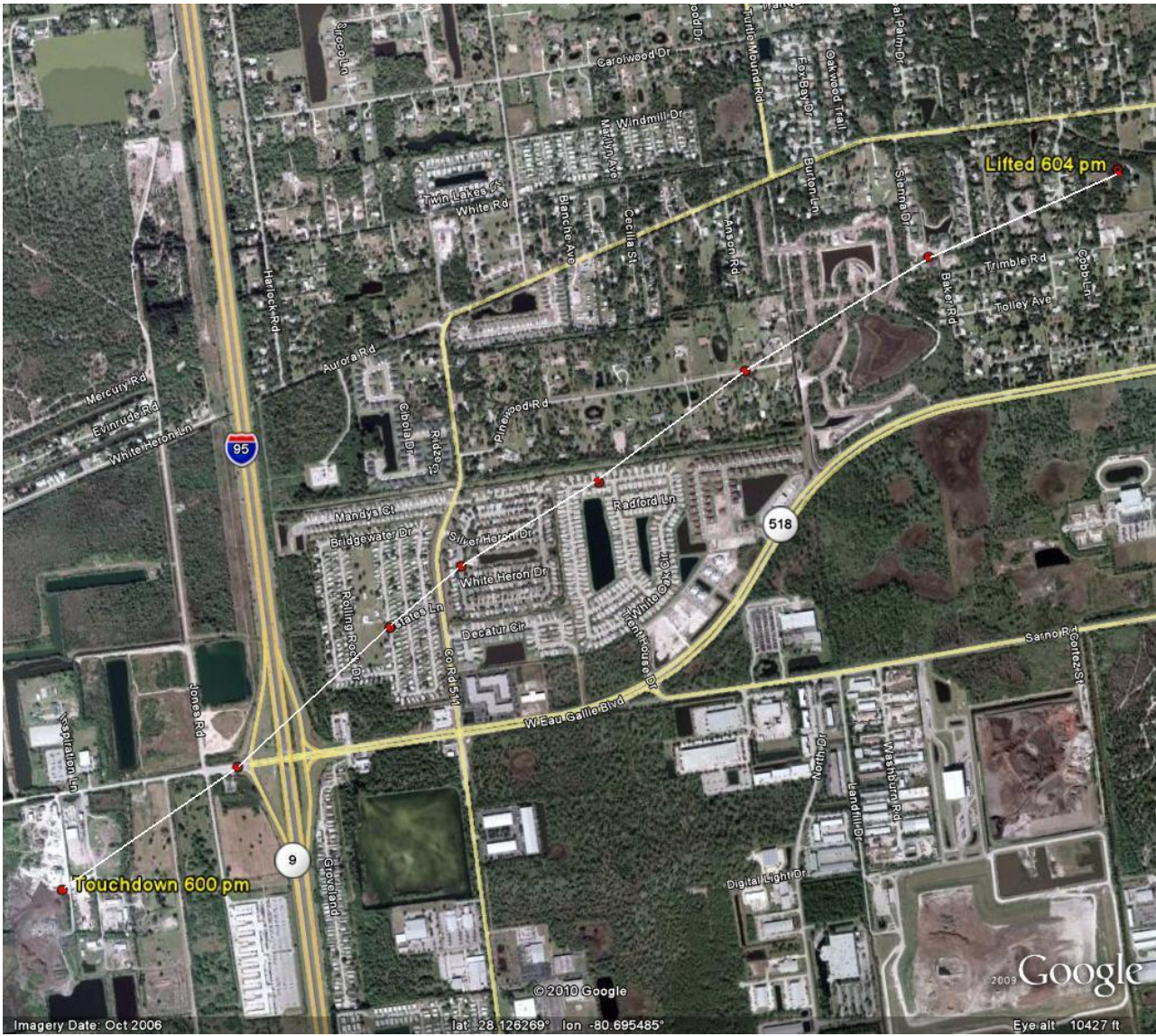


IR satellite from Sunday morning shows cold cloud tops in the eastern Gulf of Mexico and a highly diffuent atmosphere over Florida.

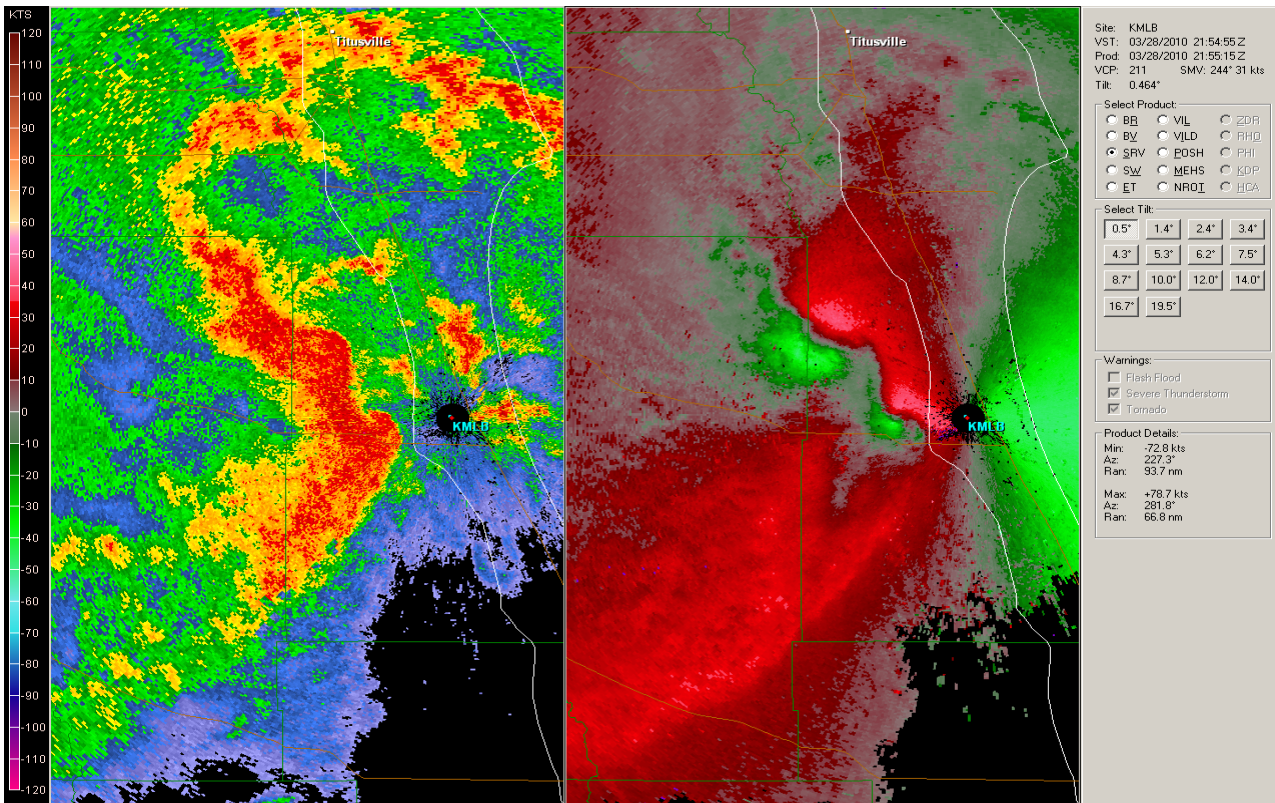
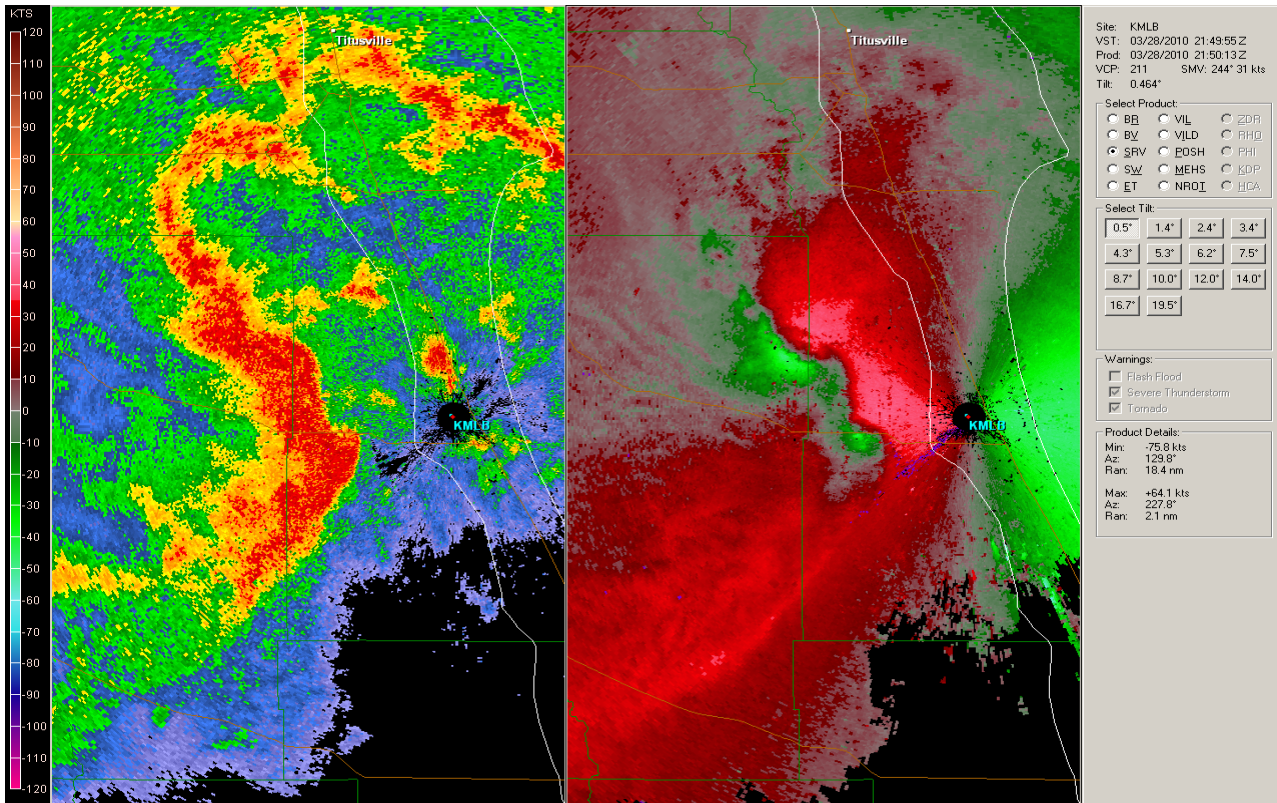
**View looking to the NW from I-95/U.S. 192 at 557 pm (shortly before touchdown):** Photo courtesy Jason Harris

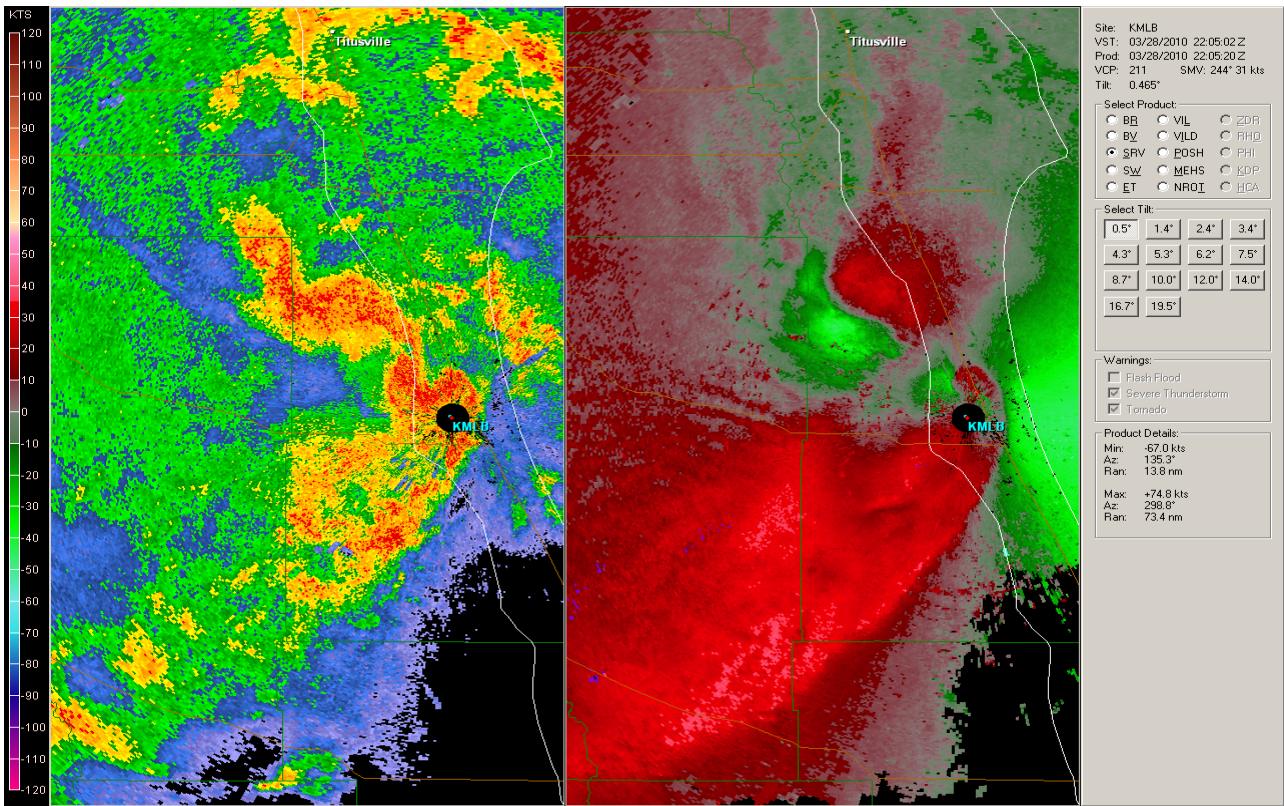
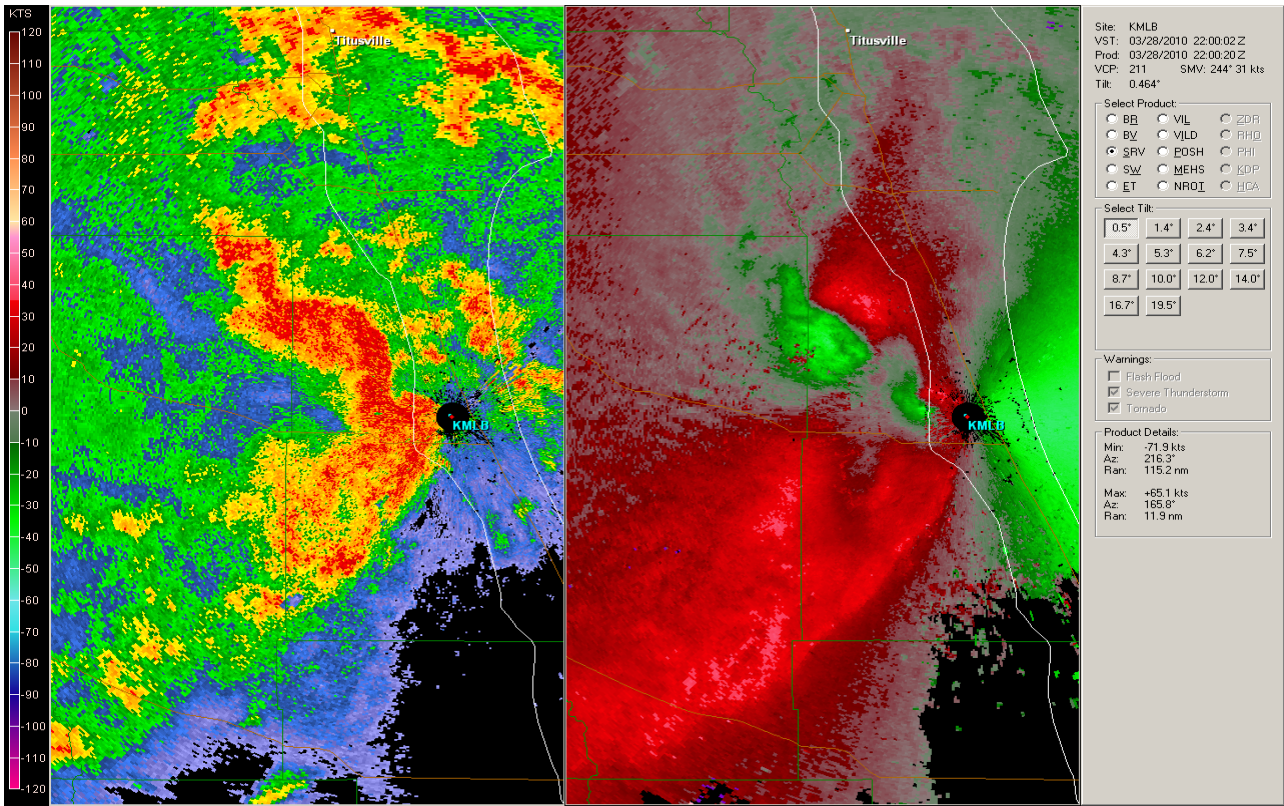


**Approximate Tornado Path from Storm Survey conducted March 29, 2010:**

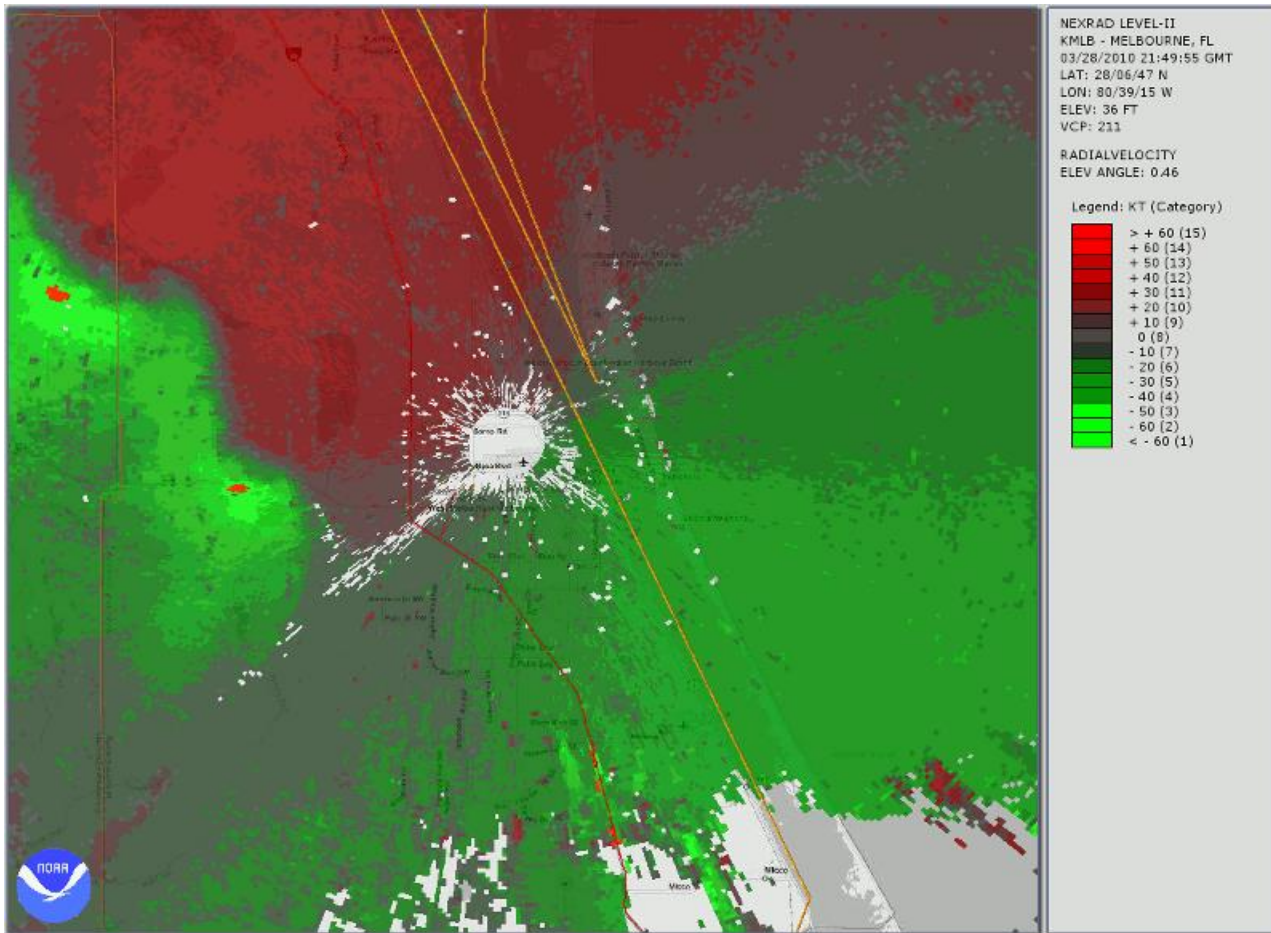


Radar images (below) show the storm at 5 minute intervals (from 550 pm through 610 pm) as it moved into Melbourne and produced an EF-0 tornado. The southernmost circulation is where tornado touch down occurred, near Interstate 95 and Eau Gallie Blvd. Base Radar Reflectivity (left) and Storm Relative Motion (right).





[Radial Loop of Base Velocity](#) from KMLB Radar showing tornadic circulation moving east northeast



**Products issued by WFO Melbourne:**

HAZARDOUS WEATHER OUTLOOK  
NATIONAL WEATHER SERVICE MELBOURNE FL  
607 AM EDT SUN MAR 28 2010

AMZ550-552-555-570-572-575-FLZ041-044>047-053-054-058-059-064-141-144-147-282000-  
COASTAL WATERS FROM FLAGLER BEACH TO VOLUSIA BREVARD COUNTY LINE OUT 20 NM-  
COASTAL WATERS FROM VOLUSIA BREVARD COUNTY LINE TO SEBASTIAN INLET OUT 20 NM-  
COASTAL WATERS FROM SEBASTIAN INLET TO JUPITER INLET OUT 20 NM-  
WATERS FROM FLAGLER BEACH TO VOLUSIA BREVARD COUNTY LINE 20 TO 60 NM OFFSHORE-  
WATERS FROM VOLUSIA BREVARD COUNTY LINE TO SEBASTIAN INLET 20 TO 60 NM OFFSHORE-  
WATERS FROM SEBASTIAN INLET TO JUPITER INLET 20 TO 60 NM OFFSHORE-  
INLAND VOLUSIA-NORTHERN LAKE-ORANGE-SEMINOLE-SOUTHERN BREVARD-OSCEOLA-INDIAN RIVER-OKEECHOBEE-ST. LUCIE-MARTIN-COASTAL VOLUSIA-SOUTHERN LAKE-NORTHERN BREVARD-  
607 AM EDT SUN MAR 28 2010

THIS HAZARDOUS WEATHER OUTLOOK IS FOR EAST CENTRAL FLORIDA.

.DAY ONE...TODAY AND TONIGHT.

...THUNDERSTORM IMPACT...

AN AREA OF THUNDERSTORMS DEVELOPING OVER THE CENTRAL GULF OF MEXICO THIS MORNING WILL MOVE EAST THROUGH THE DAY INTO TONIGHT. THE STORMS MAY DEVELOP INTO A SQUALL LINE LATER TODAY AS THEY PUSH TOWARD THE FLORIDA PENINSULA THIS AFTERNOON...THEN ACROSS THE PENINSULA OVERNIGHT.

STRONG VEERING WINDS THROUGH THE LOW AND MID LEVELS OF THE ATMOSPHERE WILL ALLOW SOME OF THE STORMS THAT DEVELOP TO BEGIN TO ROTATE AS THEY PUSH ACROSS THE PENINSULA. IN ADDITION...COLD AND DRY AIR ALOFT WILL AID IN HAIL FORMATION AS WELL AS STRONG GUSTY WINDS.

THE STORMS ARE EXPECTED TO MOVE INTO THE EAST FLORIDA PENINSULA IN THE EARLY AFTERNOON AND CONTINUE WELL INTO TONIGHT. STORMS WILL BEGIN TO AFFECT AREAS WEST OF THE ORLANDO METRO AREA AFTER 2 PM THIS AFTERNOON...THEN WILL MOVE INTO THE ORLANDO AREA AFTER 4 PM. THE STORMS ARE EXPECTED TO IMPACT THE SPACE AND TREASURE COASTS BY EARLY EVENING. SHOWERS AND ISOLATED STORMS WILL CONTINUE SOUTHWARD THROUGH THE OVERNIGHT HOURS. THE PRIMARY THREATS WILL BE DEADLY CLOUD TO GROUND LIGHTNING STRIKES...STRONG WIND GUSTS OF 40 TO 50 MPH...AND SMALL HAIL. A FEW STRONGER STORMS COULD PRODUCE DAMAGING WIND GUSTS OR EVEN ACQUIRE SOME ROTATION...ESPECIALLY ALONG AND NORTH OF THE I-4 CORRIDOR.

PERSONS IN EAST CENTRAL FLORIDA SHOULD STAY INFORMED OF THE WEATHER THIS AFTERNOON AND EVENING...ESPECIALLY IF OUTDOOR ACTIVITIES ARE PLANNED. MAKE SURE ADEQUATE MEANS OF RECEIVING WARNING INFORMATION ARE EASILY ACCESSIBLE.

...FLOOD IMPACT...

DEEP MOISTURE POOLING OVER THE CENTRAL AND EASTERN GULF OF MEXICO WILL ALLOW SOME STORMS TO PRODUCE VERY HEAVY RAIN LATE THIS AFTERNOON AND TONIGHT AHEAD OF AN APPROACHING COLD FRONT. RECENT HEAVY RAINS HAVE SATURATED MUCH OF THE LAND ACROSS THE CENTRAL PENINSULA AND HAVE REDUCED ITS ABILITY TO ABSORB ADDITIONAL WATER...ESPECIALLY NORTH OF THE ORLANDO METRO AREA. FLOODING MAY DEVELOP RAPIDLY IN SATURATED AREAS LATE THIS AFTERNOON.

...MARINE THUNDERSTORM GUST IMPACT...

NUMEROUS TO WIDESPREAD SHOWERS AND ISOLATED STORMS WILL MOVE ACROSS THE CENTRAL FLORIDA PENINSULA LATE THIS AFTERNOON AND THROUGH TONIGHT. SOME OF THE STORMS MAY INTENSIFY AS THEY APPROACH AND MOVE OFF THE EAST FLORIDA COAST AND WILL BE CAPABLE OF PRODUCING WIND GUSTS GREATER THAN 35 KNOTS.

...WATERSPOUT IMPACT...

STRONG VEERING WINDS THROUGH THE LOW AND MID LEVELS OF THE ATMOSPHERE WILL ALLOW SOME OF THE STORMS THAT DEVELOP TO BEGIN TO ROTATE AS THEY PUSH ACROSS THE PENINSULA. WATERSPOUTS MAY DEVELOP AS THESE STORMS APPROACH THE COAST.

...WIND AND SEA IMPACT...

A FRESH TO STRONG SOUTHEAST BREEZE WILL PREVAIL ACROSS THE LOCAL ATLANTIC WATERS TODAY...GENERATING SEAS GREATER THAN 7 FEET OVER THE OFFSHORE LEG.

.DAYS TWO THROUGH SEVEN...MONDAY THROUGH SATURDAY.

A LINE OF SHOWERS AND THUNDERSTORMS IS EXPECTED TO BE ONGOING EARLY MONDAY MORNING ACROSS EAST CENTRAL FLORIDA. A FEW OF THESE STORMS MAY BE STRONG TO SEVERE. THE STORMS WILL MOVE OFFSHORE THROUGH MID DAY AS A COLD FRONT SWEEPS ACROSS THE PENINSULA. MARINE CONDITIONS WILL REMAIN HAZARDOUS ACROSS THE OFFSHORE ATLANTIC WATERS THROUGH TUESDAY MORNING BEFORE WINDS AND SEAS SUBSIDE INTO MID WEEK.

.SPOTTER INFORMATION STATEMENT...

SPOTTERS ARE REQUESTED TO MONITOR THE WEATHER AND SELF ACTIVATE IF NEEDED.

\$\$

BRAGAW

---

HAZARDOUS WEATHER OUTLOOK  
NATIONAL WEATHER SERVICE MELBOURNE FL  
1130 AM EDT SUN MAR 28 2010

AMZ550-552-555-570-572-575-FLZ041-044>047-053-054-058-059-064-141-  
144-147-290600-  
COASTAL WATERS FROM FLAGLER BEACH TO VOLUSIA BREVARD COUNTY LINE  
OUT 20 NM-  
COASTAL WATERS FROM VOLUSIA BREVARD COUNTY LINE TO SEBASTIAN  
INLET OUT 20 NM-  
COASTAL WATERS FROM SEBASTIAN INLET TO JUPITER INLET OUT 20 NM-  
WATERS FROM FLAGLER BEACH TO VOLUSIA BREVARD COUNTY LINE 20 TO  
60 NM OFFSHORE-  
WATERS FROM VOLUSIA BREVARD COUNTY LINE TO SEBASTIAN INLET 20 TO  
60 NM OFFSHORE-  
WATERS FROM SEBASTIAN INLET TO JUPITER INLET 20 TO 60 NM OFFSHORE-  
INLAND VOLUSIA-NORTHERN LAKE-ORANGE-SEMINOLE-SOUTHERN BREVARD-  
OSCEOLA-INDIAN RIVER-OKEECHOBEE-ST. LUCIE-MARTIN-COASTAL VOLUSIA-  
SOUTHERN LAKE-NORTHERN BREVARD-  
1130 AM EDT SUN MAR 28 2010

THIS HAZARDOUS WEATHER OUTLOOK IS FOR EAST CENTRAL FLORIDA.

.DAY ONE...TODAY AND TONIGHT.

...THUNDERSTORM IMPACT...

AN AREA OF THUNDERSTORMS DEVELOPING OVER THE CENTRAL AND EASTERN  
GULF OF MEXICO LATE THIS MORNING WILL MOVE TOWARD THE FLORIDA  
PENINSULA THIS AFTERNOON...THEN ACROSS THE PENINSULA OVERNIGHT.  
ADDITIONAL SHOWERS AND STORMS ARE FORECAST TO FORM OUT AHEAD OF  
THE MAIN BAND BETWEEN LATE AFTERNOON AND SUNSET.

THE LOCAL AIR MASS IS FORECAST TO BECOME INCREASINGLY MOIST AND  
UNSTABLE WITH INCREASING LOW LEVEL WINDS AND SHEAR...AND THIS WILL  
ALLOW SOME OF THE STORMS THAT DEVELOP TO BEGIN TO ROTATE AS THEY  
PUSH ACROSS THE PENINSULA FROM TONIGHT. IN ADDITION...COLD AND DRY  
AIR ALOFT WILL AID IN HAIL FORMATION AS WELL AS STRONG GUSTY WINDS.

STORMS ARE FORECAST TO BEGIN AFFECTING AREAS WEST OF THE ORLANDO  
METRO AREA BETWEEN 3 AND 5 PM. THE STORMS ARE EXPECTED TO IMPACT THE  
SPACE AND TREASURE COASTS STARTING THIS EVENING. SHOWERS AND  
ISOLATED STORMS WILL CONTINUE SOUTHWARD THROUGH THE OVERNIGHT HOURS.  
THE PRIMARY THREATS WILL BE DEADLY CLOUD TO GROUND LIGHTNING  
STRIKES...STRONG WIND GUSTS OF 40 TO 50 MPH...AND SMALL HAIL. A FEW  
STRONGER STORMS COULD PRODUCE DAMAGING WIND GUSTS OR EVEN ACQUIRE  
SOME ROTATION...ESPECIALLY ALONG AND NORTH OF THE I-4 CORRIDOR.

PERSONS IN EAST CENTRAL FLORIDA SHOULD STAY INFORMED OF THE  
WEATHER THIS AFTERNOON AND EVENING...ESPECIALLY IF OUTDOOR  
ACTIVITIES ARE PLANNED. MAKE SURE ADEQUATE MEANS OF RECEIVING  
WARNING INFORMATION ARE EASILY ACCESSIBLE.

...FLOOD IMPACT...

DEEP MOISTURE WILL PUSH ACROSS FLORIDA BY LATE AFTERNOON. THIS WILL  
ALLOW SOME STORMS TO PRODUCE VERY HEAVY RAIN LATE THIS AFTERNOON AND  
TONIGHT AHEAD OF AN APPROACHING COLD FRONT. RECENT HEAVY RAINS HAVE  
SATURATED MUCH OF THE LAND ACROSS THE CENTRAL PENINSULA AND HAVE  
REDUCED ITS ABILITY TO ABSORB ADDITIONAL WATER ...ESPECIALLY NORTH  
OF THE ORLANDO METRO AREA. PONDING OF WATER OR URBAN TYPE FLOODING  
MAY DEVELOP RAPIDLY IN SATURATED AREAS LATE THIS AFTERNOON.

...MARINE THUNDERSTORM GUST IMPACT...

NUMEROUS SHOWERS AND A FEW STORMS WILL MOVE ACROSS THE CENTRAL  
FLORIDA PENINSULA LATE THIS AFTERNOON AND INCREASE IN COVERAGE



STARTING THIS EVENING. SOME OF THE STORMS MAY INTENSIFY AS THEY APPROACH AND MOVE OFF THE EAST FLORIDA COAST AND WILL BE CAPABLE OF PRODUCING WIND GUSTS GREATER THAN 35 KNOTS.

...WATERSPOUT IMPACT...

STRONG VEERING WINDS THROUGH THE LOW AND MID LEVELS OF THE ATMOSPHERE WILL ALLOW SOME OF THE STORMS THAT DEVELOP TO BEGIN TO ROTATE AS THEY PUSH ACROSS THE PENINSULA. WATERSPOUTS MAY DEVELOP AS THESE STORMS APPROACH THE COAST.

...WIND AND SEA IMPACT...

A FRESH TO STRONG SOUTHEAST BREEZE WILL PREVAIL ACROSS THE LOCAL ATLANTIC WATERS TODAY...GENERATING SEAS GREATER THAN 7 FEET OVER THE OFFSHORE LEG.

.DAYS TWO THROUGH SEVEN...MONDAY THROUGH SATURDAY.

A LINE OF SHOWERS AND THUNDERSTORMS IS EXPECTED TO BE ONGOING EARLY MONDAY MORNING ACROSS EAST CENTRAL FLORIDA. A FEW OF THESE STORMS MAY BE STRONG TO SEVERE. THE STORMS WILL MOVE OFFSHORE THROUGH MID DAY AS A COLD FRONT SWEEPS ACROSS THE PENINSULA. MARINE CONDITIONS WILL REMAIN HAZARDOUS ACROSS THE OFFSHORE ATLANTIC WATERS THROUGH TUESDAY MORNING BEFORE WINDS AND SEAS SUBSIDE INTO MID WEEK.

.SPOTTER INFORMATION STATEMENT...

SPOTTERS ARE REQUESTED TO MONITOR THE WEATHER AND SELF ACTIVATE IF NEEDED.

\$\$

BRAGAW/CRISTALDI

---

SPECIAL WEATHER STATEMENT  
NATIONAL WEATHER SERVICE MELBOURNE FL  
431 PM EDT SUN MAR 28 2010

FLZ045-047-053-147-282115-  
NORTHERN BREVARD COUNTY-ORANGE-OSCEOLA-SOUTHERN BREVARD COUNTY-  
431 PM EDT SUN MAR 28 2010

...A SIGNIFICANT WEATHER ADVISORY IS IN EFFECT FOR STRONG WIND GUSTS BETWEEN 45 AND 55 MPH AND SMALL HAIL OVER BREVARD COUNTY... SOUTHEASTERN ORANGE COUNTY...OSCEOLA COUNTY...

\* UNTIL 515 PM EDT.

AT 430 PM EDT...NATIONAL WEATHER SERVICE DOPPLER RADAR INDICATED A CLUSTER OF INTENSIFYING THUNDERSTORMS CAPABLE OF PRODUCING STRONG WINDS AND SMALL HAIL. THE STORMS REACHED FROM WESTERN OSCEOLA COUNTY THROUGH SOUTHEASTERN ORANGE COUNTY AND WERE MOVING QUICKLY NORTHEAST NEAR 40 MPH. THESE STORMS WILL ALSO MOVE INTO BREVARD COUNTY AS THE PUSH QUICKLY TOWARD THE EAST COAST DURING THE LATE AFTERNOON.

THE PRIMARY THREAT WILL BE CLOUD TO GROUND LIGHTNING STRIKES AND GUSTY WINDS OF 45 TO 55 MPH...WHICH CAN CAUSE UNSECURED OBJECTS TO BLOW AROUND...SNAP TREE LIMBS OR CAUSE POWER OUTAGES. HEAVY RAINFALL WILL TEMPORARILY REDUCE VISIBILITY. SEEK SHELTER INDOORS UNTIL THE STORM PASSES.

LAT...LON 2794 8052 2788 8049 2778 8120 2837 8156  
2866 8083 2834 8071 2869 8079 2874 8079  
2875 8079 2866 8067 2876 8073 2876 8071  
2858 8061 2860 8060 2859 8060 2827 8066  
2823 8064 2844 8061 2786 8044  
TIME...MOT...LOC 2029Z 216DEG 24KT 2830 8114

\$\$

---

SPECIAL WEATHER STATEMENT  
NATIONAL WEATHER SERVICE MELBOURNE FL  
516 PM EDT SUN MAR 28 2010

FLZ045-047-053-147-282200-  
NORTHERN BREVARD COUNTY-ORANGE-OSCEOLA-SOUTHERN BREVARD COUNTY-  
516 PM EDT SUN MAR 28 2010

...A SIGNIFICANT WEATHER ADVISORY IS IN EFFECT FOR STRONG WIND GUSTS  
BETWEEN 45 AND 55 MPH AND SMALL HAIL OVER BREVARD COUNTY...  
SOUTHEASTERN ORANGE COUNTY...OSCEOLA COUNTY...

\* UNTIL 600 PM EDT.

AT 515 PM EDT...NATIONAL WEATHER SERVICE DOPPLER RADAR INDICATED A  
CLUSTER OF STORMS CAPABLE OF PRODUCING STRONG WINDS AND SMALL HAIL  
MOVING OVER SOUTHEASTERN ORANGE AND OSCEOLA COUNTIES AND TOWARD  
BREVARD COUNTY. THE STORMS WERE MOVING QUICKLY NORTHEAST AT 40 MPH.

THE PRIMARY THREAT WILL BE CLOUD TO GROUND LIGHTNING STRIKES AND  
GUSTY WINDS OF 45 TO 55 MPH...WHICH CAN CAUSE UNSECURED OBJECTS TO  
BLOW AROUND...SNAP TREE LIMBS OR CAUSE POWER OUTAGES. HEAVY RAINFALL  
WILL TEMPORARILY REDUCE VISIBILITY. SEEK SHELTER INDOORS UNTIL THE  
STORM PASSES.

LAT...LON 2794 8052 2785 8048 2766 8114 2803 8140  
2807 8135 2808 8144 2874 8084 2874 8083  
2834 8071 2864 8079 2871 8075 2877 8082  
2859 8057 2844 8052 2840 8058 2821 8059  
2786 8044

TIME...MOT...LOC 2113Z 225DEG 32KT 2801 8120

\$\$

52

---

BULLETIN - EAS ACTIVATION REQUESTED  
TORNADO WARNING  
NATIONAL WEATHER SERVICE MELBOURNE FL  
517 PM EDT SUN MAR 28 2010

THE NATIONAL WEATHER SERVICE IN MELBOURNE HAS ISSUED A

\* TORNADO WARNING FOR...  
SOUTHERN BREVARD COUNTY IN FLORIDA...  
THIS INCLUDES THE CITIES OF...SATELLITE BEACH...PATRICK AIRFORCE  
BASE...PALM BAY...MELBOURNE...MALABAR...INDIALANTIC...CAMP HOLLY  
FISH CAMP...  
CENTRAL OSCEOLA COUNTY IN FLORIDA...

\* UNTIL 615 PM EDT.

\* AT 514 PM EDT...NATIONAL WEATHER SERVICE DOPPLER RADAR INDICATED A  
SEVERE THUNDERSTORM CAPABLE OF PRODUCING A TORNADO 27 MILES WEST OF  
CAMP HOLLY FISH CAMP...OR 7 MILES NORTHEAST OF LAKE KISSIMMEE...  
MOVING EAST AT 30 MPH.

\* OTHER LOCATIONS IN THE WARNING INCLUDE BUT ARE NOT LIMITED TO THE  
FLORIDA TURNPIKE...FOREVER FLORIDA...DEER PARK...AND CAMP HOLLY  
FISH CAMP

PRECAUTIONARY/PREPAREDNESS ACTIONS...

DO NOT USE YOUR CAR TO TRY TO OUTFRAN A TORNADO. CARS ARE EASILY  
TOSSED AROUND BY TORNADO WINDS. IF YOU ARE CAUGHT IN THE PATH OF A  
TORNADO...LEAVE THE CAR AND GO TO A STRONG BUILDING. IF NO SAFE

STRUCTURE IS NEARBY...SEEK SHELTER IN A DITCH OR LOW SPOT AND COVER YOUR HEAD.

THE SAFEST PLACE TO BE DURING A TORNADO IS IN A STRONG BUILDING ON THE LOWEST FLOOR...IN AN INTERIOR ROOM SUCH AS A BATHROOM OR CLOSET. KEEP AWAY FROM WINDOWS. GET UNDER A WORKBENCH OR OTHER PIECE OF STURDY FURNITURE. USE BLANKETS OR PILLOWS TO COVER YOUR BODY.

EVACUATE MOBILE HOMES OR VEHICLES FOR MORE SUBSTANTIAL SHELTER. IF NO SHELTER IS AVAILABLE...LIE FLAT IN THE NEAREST DITCH OR OTHER LOW SPOT AND COVER YOUR HEAD WITH YOUR HANDS. ABANDON YOUR VEHICLE IF THE TORNADO IS NEARBY.

&&

LAT...LON 2795 8052 2806 8058 2812 8059 2816 8063  
2808 8060 2795 8053 2787 8118 2804 8125  
2825 8065 2823 8063 2827 8060 2811 8057  
2795 8049

TIME...MOT...LOC 2117Z 257DEG 25KT 2797 8115

\$\$

MOSES

---

BULLETIN - EAS ACTIVATION REQUESTED  
TORNADO WARNING  
NATIONAL WEATHER SERVICE MELBOURNE FL  
555 PM EDT SUN MAR 28 2010

THE NATIONAL WEATHER SERVICE IN MELBOURNE HAS ISSUED A

\* TORNADO WARNING FOR...  
CENTRAL BREVARD COUNTY IN FLORIDA...  
THIS INCLUDES THE CITIES OF...SATELLITE BEACH...PATRICK AIRFORCE  
BASE...CAMP HOLLY FISH CAMP...

\* UNTIL 645 PM EDT.

\* AT 549 PM EDT...NATIONAL WEATHER SERVICE METEOROLOGISTS DETECTED A SEVERE THUNDERSTORM CAPABLE OF PRODUCING A TORNADO 9 MILES SOUTHWEST OF VIERA...OR 10 MILES NORTHWEST OF CAMP HOLLY FISH CAMP...MOVING EAST AT 30 MPH. A SECOND AREA OF ROTATION WAS LOCATED JUST WEST OF HOLLY FISH CAMP.

\* OTHER LOCATIONS IN THE WARNING INCLUDE BUT ARE NOT LIMITED TO WEST MELBOURNE...SUNTREE AND INDIAN HARBOUR BEACH

PRECAUTIONARY/PREPAREDNESS ACTIONS...

IN ADDITION TO THE TORNADO...THIS STORM IS CAPABLE OF PRODUCING PENNY SIZE HAIL AND DESTRUCTIVE STRAIGHT LINE WINDS IN EXCESS OF 70 MPH.

THE SAFEST PLACE TO BE DURING A TORNADO IS IN A STRONG BUILDING ON THE LOWEST FLOOR...IN AN INTERIOR ROOM SUCH AS A BATHROOM OR CLOSET. KEEP AWAY FROM WINDOWS. GET UNDER A WORKBENCH OR OTHER PIECE OF STURDY FURNITURE. USE BLANKETS OR PILLOWS TO COVER YOUR BODY.

EVACUATE MOBILE HOMES OR VEHICLES FOR MORE SUBSTANTIAL SHELTER. IF NO SHELTER IS AVAILABLE...LIE FLAT IN THE NEAREST DITCH OR OTHER LOW SPOT AND COVER YOUR HEAD WITH YOUR HANDS. ABANDON YOUR VEHICLE IF THE TORNADO IS NEARBY.

&&

LAT...LON 2816 8063 2809 8062 2803 8087 2825 8087  
2828 8069 2833 8070 2834 8066 2831 8065  
2828 8066 2823 8063 2828 8061 2833 8063

2835 8062 2810 8058  
TIME...MOT...LOC 2154Z 254DEG 27KT 2821 8080

\$\$

SEDLOCK

---

SEVERE WEATHER STATEMENT  
NATIONAL WEATHER SERVICE MELBOURNE FL  
535 PM EDT SUN MAR 28 2010

FLC009-097-282215-  
/O.CON.KMLB.TO.W.0025.000000T0000Z-100328T2215Z/  
OSCEOLA-BREVARD-  
535 PM EDT SUN MAR 28 2010

...A TORNADO WARNING REMAINS IN EFFECT UNTIL 615 PM EDT FOR SOUTHERN  
BREVARD AND CENTRAL OSCEOLA COUNTIES...

AT 534 PM EDT...NATIONAL WEATHER SERVICE DOPPLER RADAR CONTINUED TO  
INDICATE A SEVERE THUNDERSTORMS CAPABLE OF PRODUCING TORNADO. THIS  
STORM WAS LOCATED JUST EAST OF FOREVER FLORIDA...MOVING EAST AT 30  
MPH TOWARD HIGHWAY 192 NEAR DEER PARK.

OTHER LOCATIONS IN THE WARNING INCLUDE BUT ARE NOT LIMITED TO DEER  
PARK...CAMP HOLLY FISH CAMP...PALM BAY...WEST MELBOURNE...  
VALKARIA...MELBOURNE BEACH...MELBOURNE...MALABAR.

PRECAUTIONARY/PREPAREDNESS ACTIONS...

IN ADDITION TO THE TORNADO...THIS STORM IS CAPABLE OF PRODUCING COIN  
SIZE HAIL AND DESTRUCTIVE STRAIGHT LINE WINDS.

&&

LAT...LON 2795 8052 2806 8058 2812 8059 2816 8063  
2808 8060 2795 8053 2787 8118 2804 8125  
2825 8065 2823 8063 2827 8060 2811 8057  
2795 8049  
TIME...MOT...LOC 2131Z 257DEG 25KT 2806 8100

\$\$

52

---

SEVERE WEATHER STATEMENT  
NATIONAL WEATHER SERVICE MELBOURNE FL  
618 PM EDT SUN MAR 28 2010

FLC009-282245-  
/O.CON.KMLB.TO.W.0026.000000T0000Z-100328T2245Z/  
BREVARD-  
618 PM EDT SUN MAR 28 2010

...A TORNADO WARNING REMAINS IN EFFECT UNTIL 645 PM EDT FOR CENTRAL  
BREVARD COUNTY...

AT 615 PM EDT...NATIONAL WEATHER SERVICE METEOROLOGISTS CONTINUED TO  
DETECT A TORNADO THREAT. WHILE ONE AREA OF CIRCULATION HAS PUSHED OFF  
THE MAINLAND ACROSS THE INTRACOASTAL WATERS AND BARRIER ISLANDS NEAR  
INDIAN HARBOUR BEACH...A WEAK SECONDARY CIRCULATION STILL EXISTS  
NEAR SPACE COAST STADIUM AND VIERA.

PRECAUTIONARY/PREPAREDNESS ACTIONS...

IN ADDITION TO THE TORNADO...THIS STORM IS CAPABLE OF PRODUCING PEA  
SIZE HAIL AND DESTRUCTIVE STRAIGHT LINE WINDS IN EXCESS OF 60 MPH.

&&

LAT...LON 2835 8062 2810 8058 2816 8063 2809 8062  
2808 8066 2827 8076 2828 8069 2833 8070  
2834 8066 2831 8065 2828 8066 2823 8063  
2828 8061 2833 8063  
TIME...MOT...LOC 2216Z 254DEG 27KT 2825 8062

\$\$

SEDLOCK

---

PUBLIC INFORMATION STATEMENT  
NATIONAL WEATHER SERVICE MELBOURNE FL  
1051 AM EDT MON MAR 29 2010

A NATIONAL WEATHER SERVICE DAMAGE SURVEY WAS CONDUCTED THIS MORNING IN MELBOURNE. A 150 TO 200 YARD WIDE DISCONTINUOUS DAMAGE SWATH WAS APPARENT FROM SOUTHWEST OF THE INTERSTATE 95 AND EAU GALLIE INTERSECTION TO SOUTHWEST OF THE AURORA ROAD AND WICKHAM ROAD INTERSECTION. ALONG THE SWATH...NUMEROUS TREE BRANCHES WERE DOWNED... ONE LARGE TREE WAS TOPPLED...FENCES WERE BLOWN OVER...AND TWO HOMES SUSTAINED MINOR DAMAGE (ONE PERMANENT HOME AND ONE MOBILE HOME).

THE TOTAL LENGTH OF THE DAMAGE SWATH WAS ABOUT 2.4 MILES LONG. WIND SPEEDS ALONG THE SWATH WERE ESTIMATED AT 45 TO 60 MPH. THE CHARACTER OF THE SURVEYED DAMAGE AND CORRELATION WITH A PERSISTENT ROTATIONAL CIRCULATION ON DOPPLER RADAR ARE CONSISTENT WITH A WEAK EF0 TORNADO.

DETERMINATION: WEAK EF0 TORNADO  
MAXIMUM ESTIMATED WINDS: 60 MPH  
PATH LENGTH: 2.4 MILES  
PATH WIDTH: 150-200 YARDS  
TIME OF OCCURRENCE: 600 PM TO 604 PM...MAR 28 2010

\$\$

HAGEMeyer/SPRATT

---

PRELIMINARY LOCAL STORM REPORT  
NATIONAL WEATHER SERVICE MELBOURNE FL  
404 PM EDT MON MAR 29 2010

..TIME... ..EVENT... ..CITY LOCATION... ..LAT.LON...  
..DATE... ..MAG.... ..COUNTY LOCATION..ST.. ..SOURCE....  
..REMARKS..

0600 PM TORNADO MELBOURNE 28.08N 80.61W  
03/28/2010 BREVARD FL NWS STORM SURVEY

EF0 TORNADO WAS CONFIRMED WITH PATH LENGTH OF 2.4 MILES FROM SOUTHWEST OF I-95 AND EAU GALLIE INTERSECTION TO SOUTHWEST OF AURORA AND WICKHAM ROAD INTERSECTION. MAXIMUM ESTIMATED WINDS OF 60 MPH BLEW DOWN NUMEROUS TREE BRANCHES...TOPPLED ONE LARGE TREE...BLEW FENCES OVER...AND DID MINOR DAMAGE TO TWO HOMES. THIS IS AN UPDATE TO THE STORM REPORT FROM 606 PM 3/28/10.

&&

\$\$

DKW