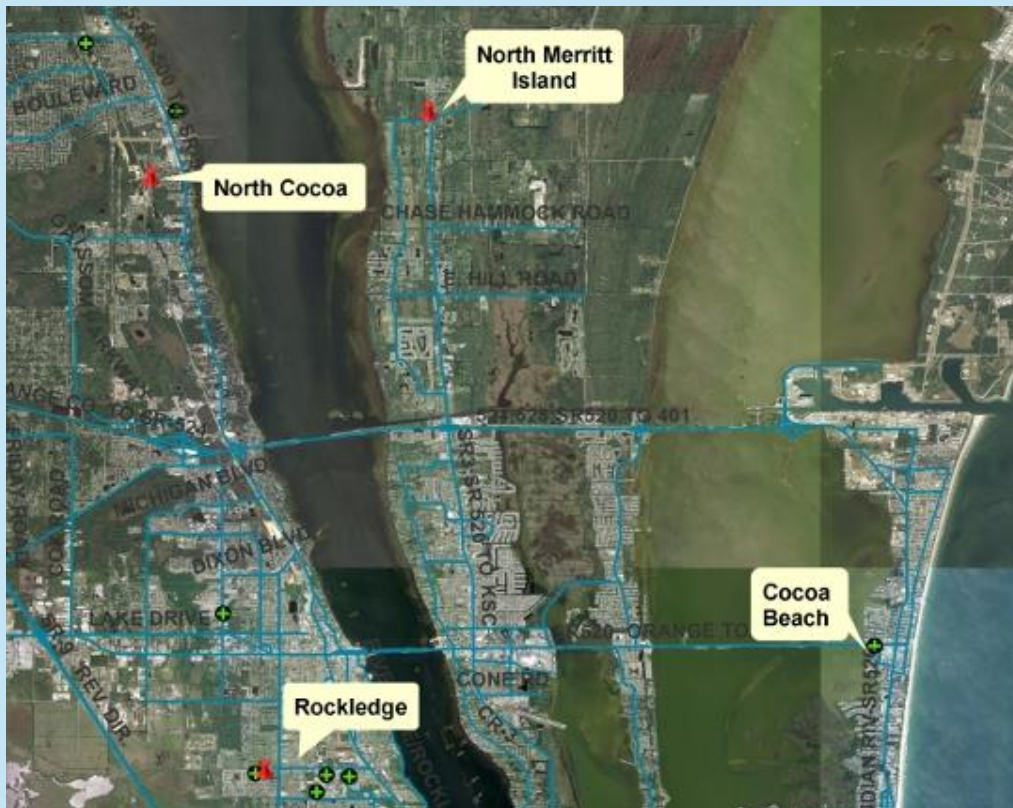
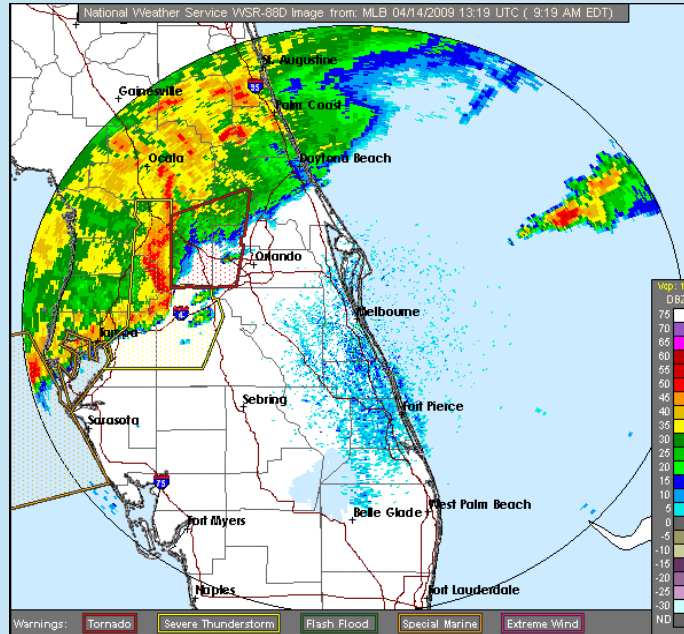


# East Central Florida Severe Weather

April 14, 2009

A squall line with severe storms tracked quickly eastward across East Central Florida on April 14, 2009. Numerous reports of severe weather were received across northern portions of East Central Florida including, Lake, Volusia, Seminole, Orange, northern Osceola and Brevard counties. Damaging winds were reported in Lake, Volusia and Brevard counties with these storms. The strongest measured wind gust was from a USAF wind tower in Rockledge which reported a gust to 64 mph at 1108 am.



## Damage Photos

**Funnel seen from motorist on US Hwy 1:**



Photo Courtesy of Mr. Terry Sherman

**Cocoa/Port St. John/Frontenac**







**Rockledge**



**Cocoa Beach**





**North Merritt Island**



PNSMLB

FLZ041-044>047-053-054-058-059-064-141-144-147-210000-

PUBLIC INFORMATION STATEMENT  
NATIONAL WEATHER SERVICE MELBOURNE FL  
740 PM EDT FRI APR 17 2009

...STORM SURVEY RESULTS FOR THE 4/14/09 SEVERE WEATHER OUTBREAK...

A TEAM OF NWS METEOROLOGISTS CONDUCTED A (GROUND-BASED) DAMAGE SURVEY OF SEVERAL AREAS IN CENTRAL BREVARD COUNTY ON APRIL 14TH. THE SURVEYS WERE IN RESPONSE TO NUMEROUS REPORTS OF WIND DAMAGE ASSOCIATED WITH A FAST MOVING SQUALL LINE WHICH CROSSED CENTRAL FLORIDA DURING THE MORNING AND EARLY AFTERNOON OF APRIL 14TH. RADAR IMAGES SHOWED THE SQUALL LINE EVOLVED INTO A CLASSIC LINE ECHO WAVE PATTERN (LEWP). ALONG WITH THE LEWP WERE SEVERAL BOW ECHOES (OFTEN INDICATIVE OF LOCALIZED DAMAGING WINDS) WITH ADJACENT, SHALLOW, ROTATING COMMA-HEAD TORNADOES.

WHILE MUCH OF CENTRAL FLORIDA EXPERIENCED NON-DAMAGING WIND GUSTS OF 40-45 MPH AS THE SQUALL LINE PASSED, SEVERAL LOCATIONS, PARTICULARLY IN BREVARD COUNTY, EXPERIENCED CONCENTRATED REGIONS OF HIGHER WINDS, RESULTING IN SIGNIFICANT DAMAGE, AS SURVEYED BY THE NWS TEAM.

**ROCKLEDGE:**

AN AREA OF STRUCTURAL DAMAGE APPROXIMATELY 1.7 MILES LONG AND 0.25 MILES WIDE WAS OBSERVED, ROUGHLY BOUNDED BY BARTON BOULEVARD TO THE NORTH, EYSTER BOULEVARD TO THE SOUTH, INTERSTATE 95 TO THE WEST, AND MURRELL ROAD TO THE EAST. THE MAJORITY OF THE STRUCTURAL DAMAGE WAS LIGHT TO MODERATE, WITH A FEW RESIDENTIAL STRUCTURES EXPERIENCING MORE SIGNIFICANT DAMAGE. SEVERAL TREES WERE TOPPLED AND MANY SMALL BRANCHES WERE BROKEN. THE DAMAGE WAS CONSISTENT WITH STRAIGHT-LINE THUNDERSTORM WINDS, ESTIMATED AT 50 TO 65 MPH.

**COCOA/PORT ST. JOHN/FRONTENAC:**

AN AREA OF STRUCTURAL DAMAGE (GENERALLY LIGHT TO MODERATE) A LITTLE OVER 0.5 MILES LONG AND NEARLY 0.25 MILES WIDE WAS OBSERVED FROM WEST OF US-1 NEAR THE INTERSECTION OF MONROE AVENUE AND RONALD STREET, TO JUST EAST OF US-1 NEAR CANEBREAKERS DRIVE, INCLUDING THE FRONTENAC FLEA MARKET. ADJACENT TO THIS REGION, ISOLATED LOCATIONS ALSO EXPERIENCED DAMAGING WINDS. DAMAGE WAS CONSISTENT WITH STRAIGHT-LINE THUNDERSTORM WINDS, ESTIMATED AT 55 TO 70 MPH. HOWEVER, TWO MOTORISTS WHO WERE DRIVING NORTH ALONG US-1 JUST SOUTH OF THE FRONTENAC FLEA MARKET REPORTED SEEING A NARROW/RAGGED CIRCULATION MOVE THROUGH THE CENTRAL PORTION OF THE MARKET AND CROSS US-1. THESE OBSERVATIONS SUGGEST A VERY WEAK EF-0 TORNADO (ESTIMATED WINDS 65-70 MPH) TOUCHED DOWN BRIEFLY WITHIN THE WIDER REGION OF THE DAMAGING STRAIGHT-LINE WINDS, LIKELY MOVING FROM JUST WEST OF THE FLEA MARKET, BEFORE LIFTING JUST EAST OF US-1 (A PATH LENGTH OF LESS THAN 0.2 MILES).

**NORTH MERRITT ISLAND:**

A SMALL AREA OF SEVERE THUNDERSTORM WINDS DAMAGED SEVERAL RESIDENCES WITHIN THE COLONY PARK MOBILE HOME VILLAGE JUST NORTH OF NORTH COURTNEY PARKWAY AND NORTH TROPICAL TRAIL. DAMAGE WAS CONSISTENT WITH STRAIGHT-LINE WINDS OF 55-65 MPH.

**COCOA BEACH:**

SEVERAL BUSINESS EXPERIENCED MINOR STRUCTURAL DAMAGE CONSISTENT WITH STRAIGHT-LINE WINDS OF 50 TO 60 MPH.

SPRATT/HAGEMeyer  
PENDERGRASr/VOLKMER/GLITTO/LASCODY  
CARTWRIGHT/VAN DYKE

\$\$