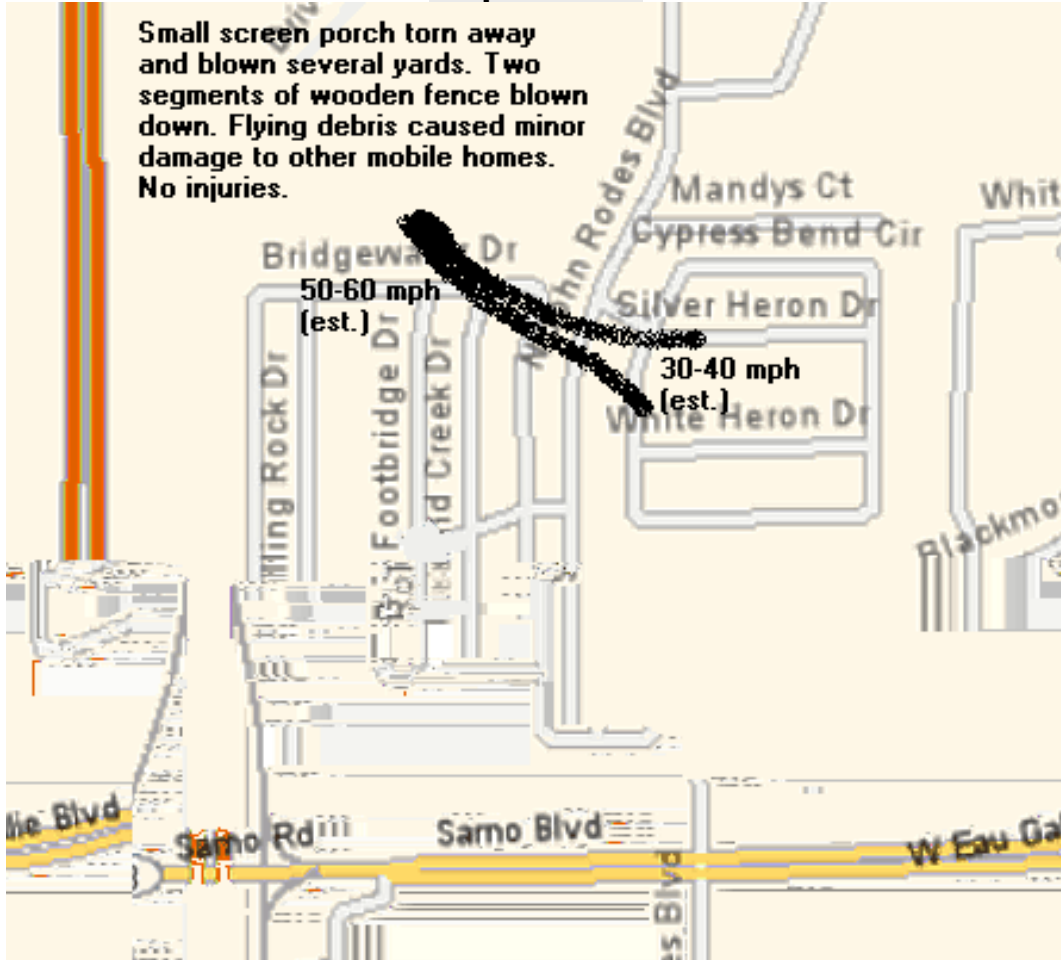


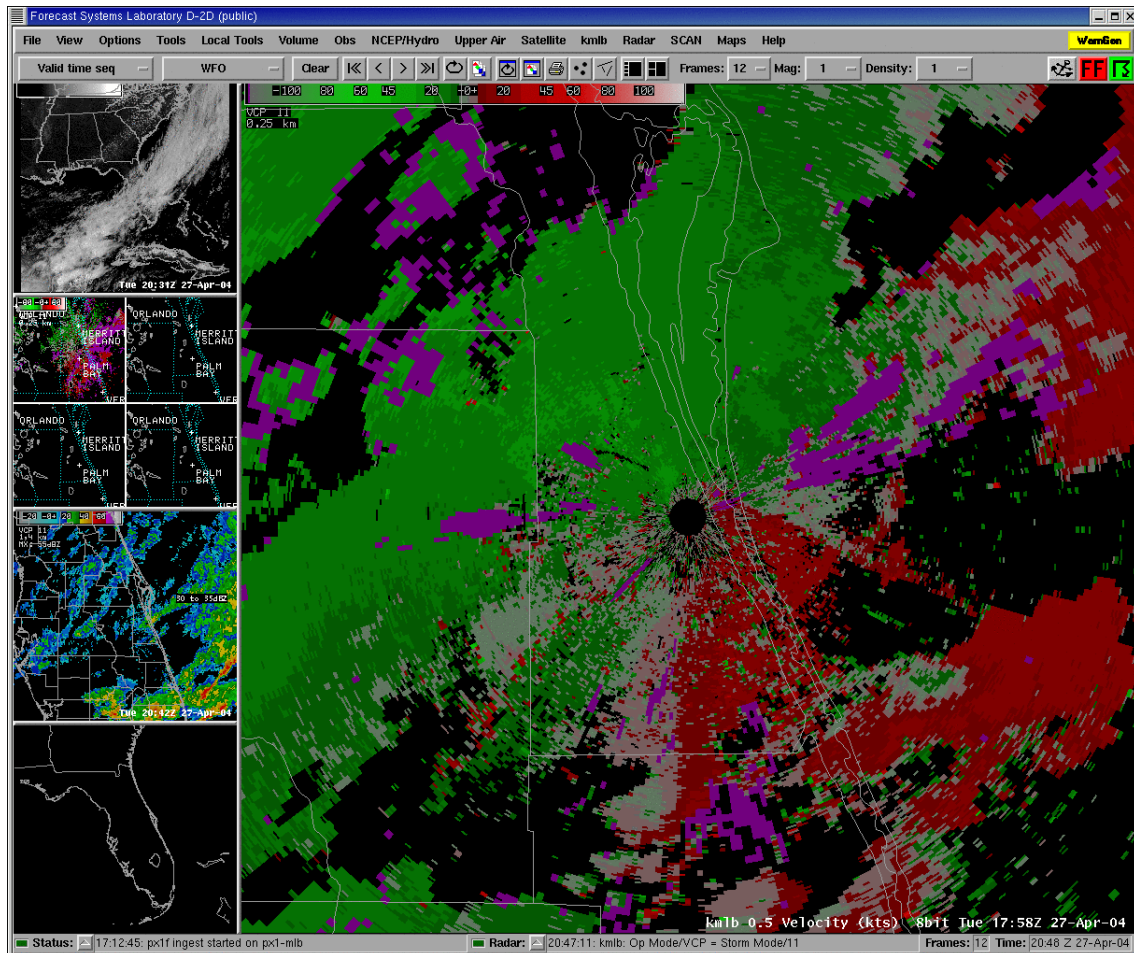
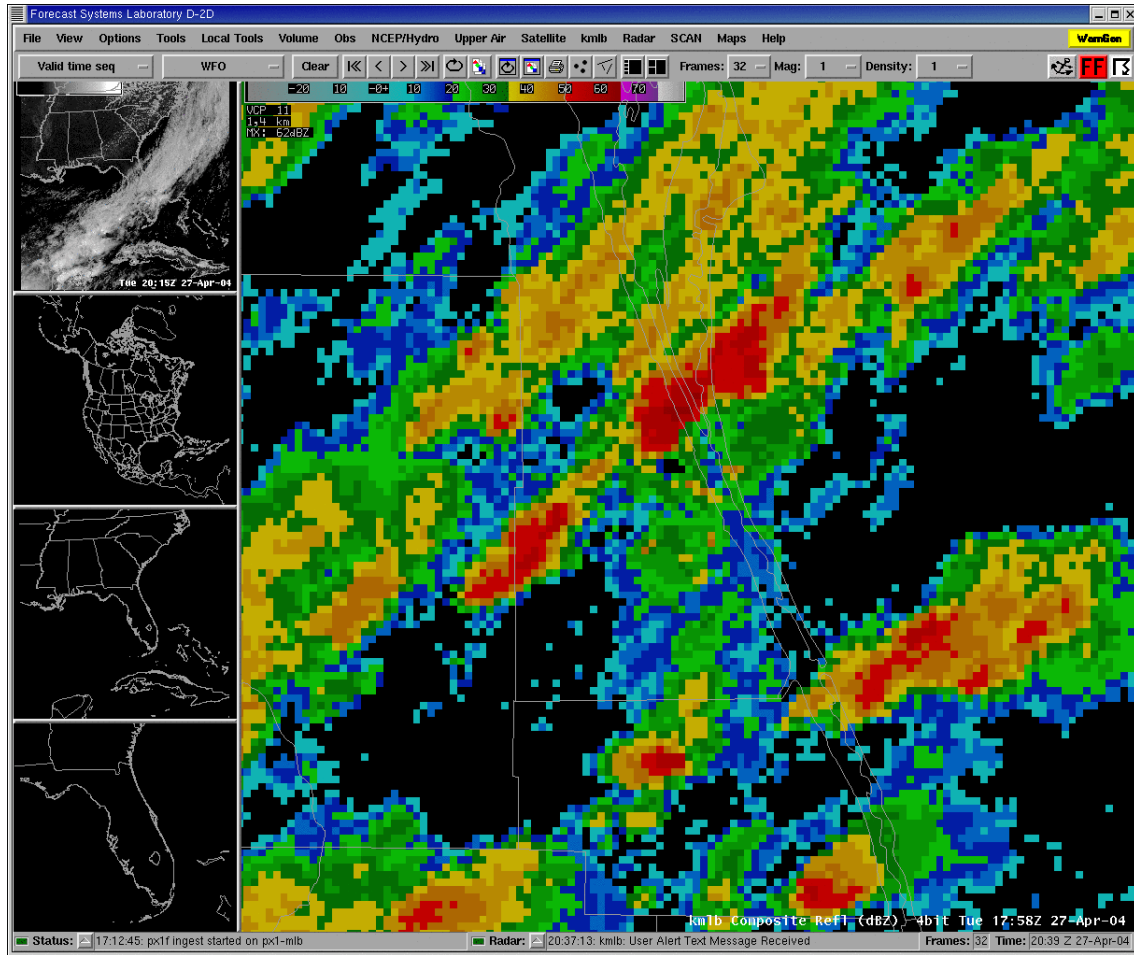
Microburst Wind Damage in Melbourne - 4/27/04

A strong storm developed along a cold front as it moved through Brevard County around 2 pm on April 27, 2004. A microburst within the storm produced a narrow swath of wind damage in Eau Gallie Estates near the intersection of John Rhodes Blvd. and Eau Gallie Rd. A National Weather Service storm survey estimated winds reached as high as 50-60 mph with the storm.

Map of Area



Radar Products



Damage Photos from Storm Survey



