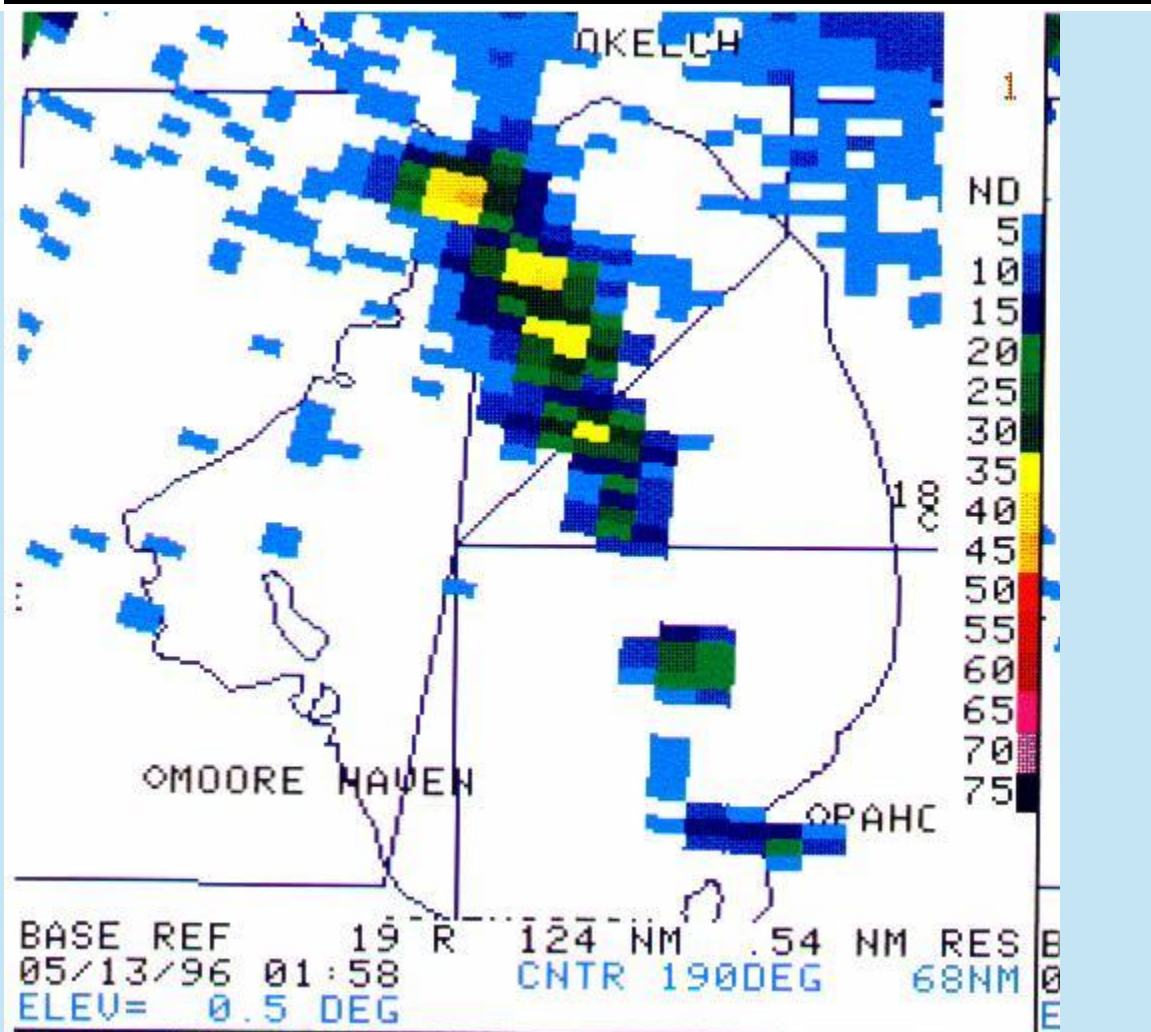
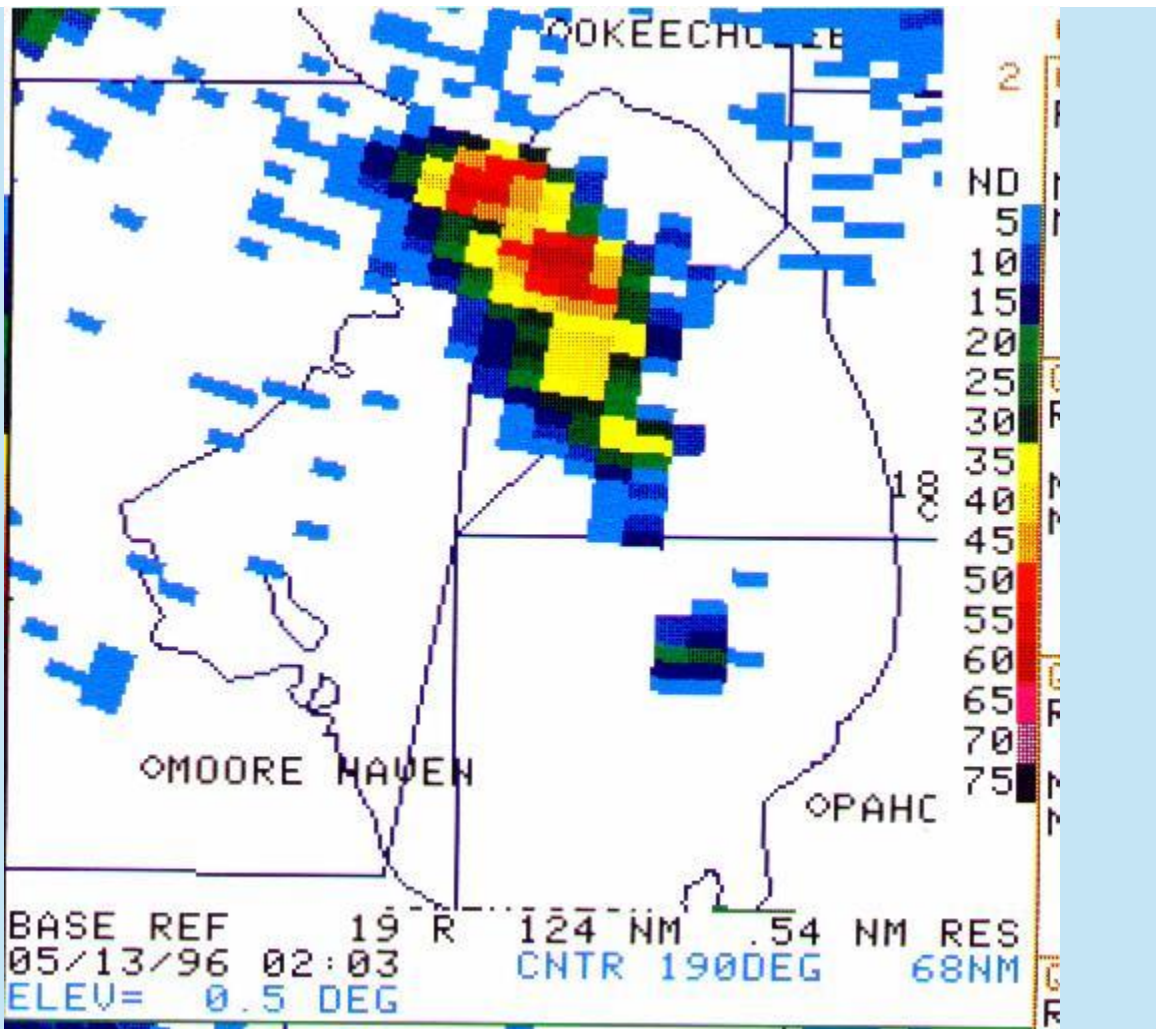


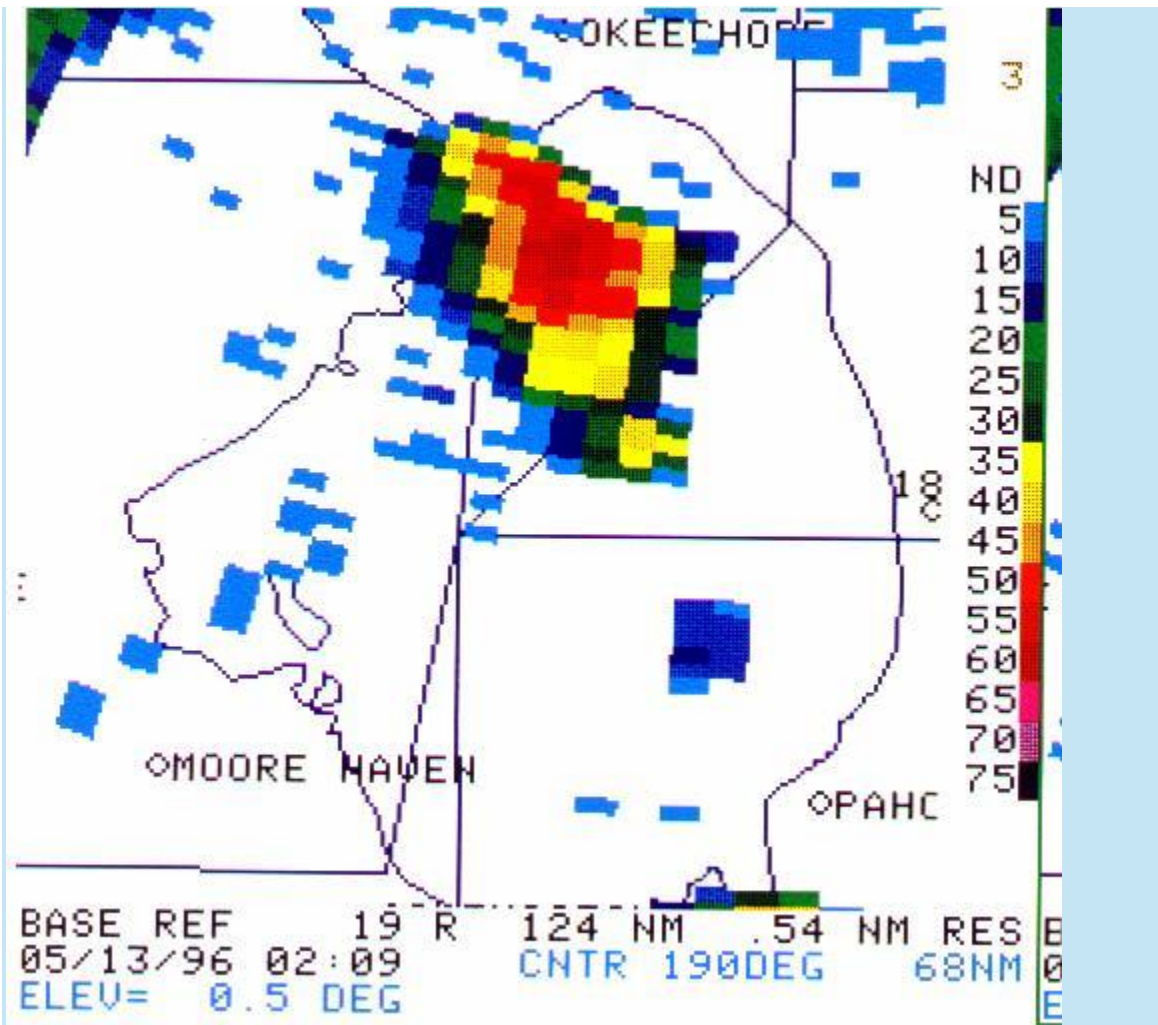
**WSR-88D Imagery from the Okeechobee Tornado  
May 12, 1996**



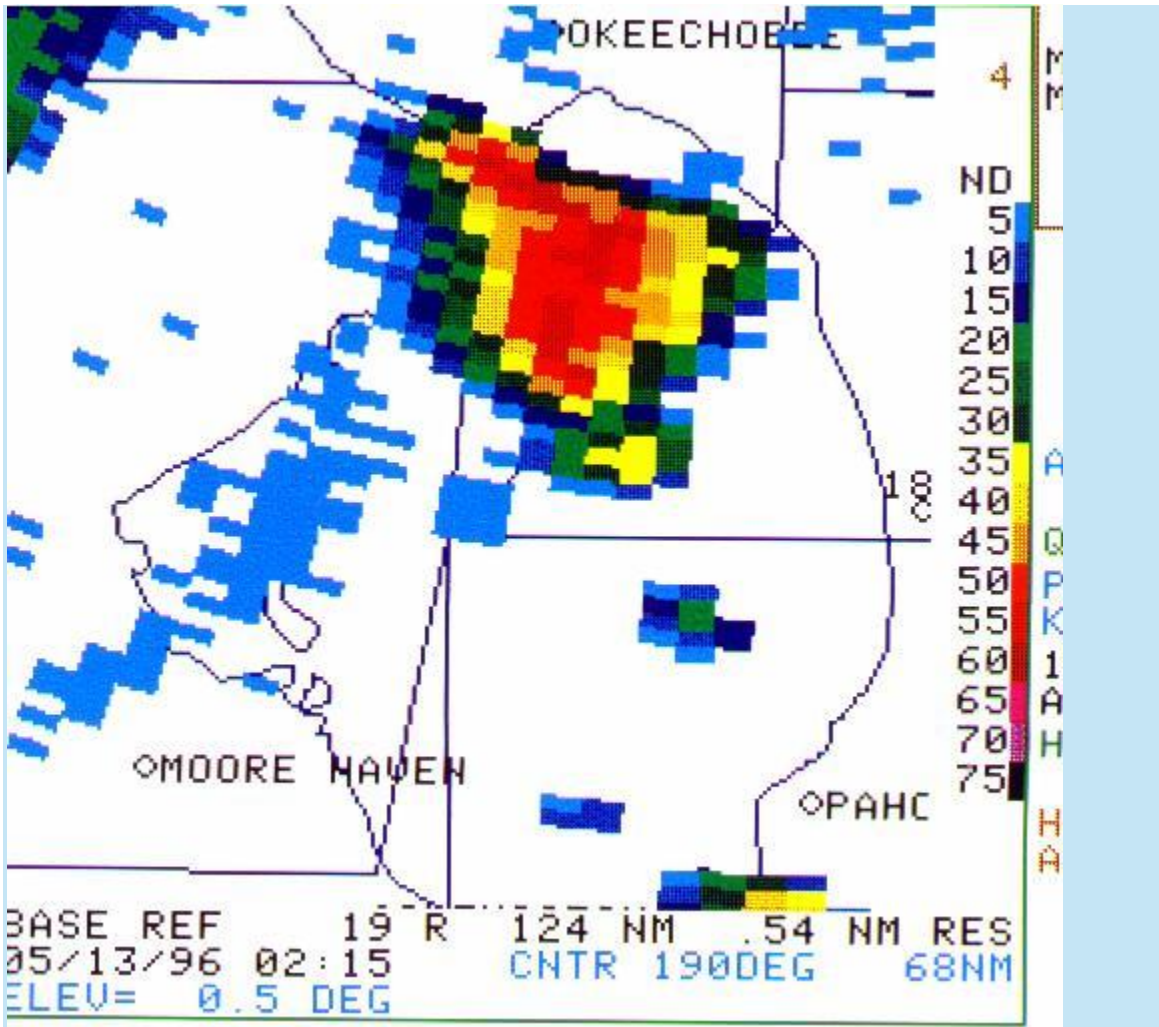
Shows developing on boundary over Lake Okeechobee. (b-ref/.5deg/130158z)



Cells rapidly developing over northern part of the lake. (b-ref/.5deg/130203z)



Strong thunderstorm remains over northern end of lake, producing F0 tornado over extreme southwest Okeechobee County. Tornado likely to have originated as a waterspout. Several mobile homes damaged, one motor home destroyed, one minute after this image. (b-ref/.5deg/130209z)



Strong thunderstorm remains intense, however tornado quickly dissipated. (b-ref/.5deg/130215)