

Indian River County/Sebastian F1 Tornado

June 24, 2001

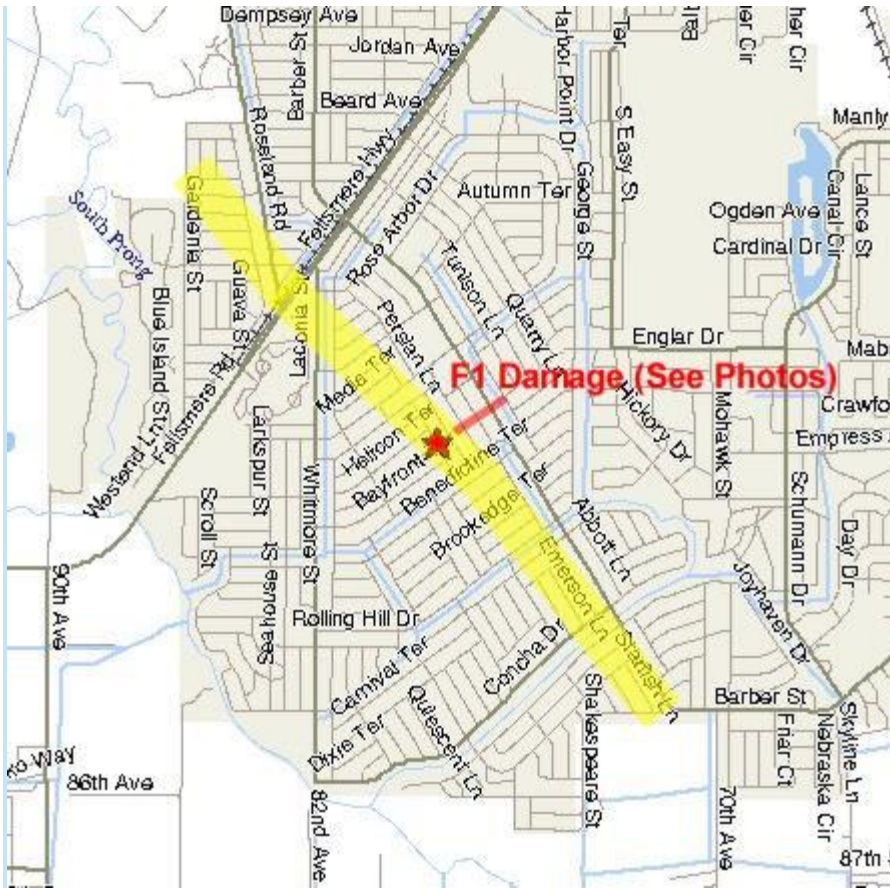


Description

Severe thunderstorms spawned a weak (F0-F1) tornado which was responsible for property damage in Indian River County. The event occurred during the afternoon on Sunday (06/24/01) between 240 pm and 300 pm. The thunderstorms which spawned the tornado had been relatively benign as they moved east across the peninsula. However, as the storms approached the Brevard and Indian River County coasts they erupted into strong to severe thunderstorms. A tornado warning was issued when weather radar indicated strong rotation developing within a storm over Sebastian. Soon afterwards, reports from Sebastian Police Department indicated damage consistent with that of a severe thunderstorm and associated weak tornado. A damage survey team was dispatched Monday morning to investigate. The survey revealed a narrow, two mile long tornado damage path (generally up to about 50 yards wide). The path was oriented northwest to southeast and extended across the western portion of Sebastian in the Sebastian Highlands area. Damage due to the tornado was mostly minor (F0), consisting of downed trees, power lines, traffic lights, screen houses, and minor roof damage. However, the tornado earned it's F1 classification by briefly gaining strength and removing a large portion of a residential roof on Croquet Lane.

Damage swath center-point locations include...

Fellsmere Highway (CR 512) and Roseland Drive
Croquet Lane and Capon Terrace
Coverbrook Lane and Belfast Terrace
Concha Drive and Barber Street
Skyline Lane and Starfish Lane



The approximate damage path was derived from a National Weather Service ground survey.

Products

SEVERE WEATHER STATEMENT
 NATIONAL WEATHER SERVICE MELBOURNE FL
 229 PM EDT SUN JUN 24 2001

...A SEVERE THUNDERSTORM WARNING CONTINUES
 FOR BREVARD COUNTY UNTIL 245 PM EDT...

AT 229 PM EDT NATIONAL WEATHER SERVICE DOPPLER
 RADAR INDICATED A SEVERE THUNDERSTORM OVER
 THE TOWN OF CAPE CANAVERAL. ANOTHER WAS OVER
 THE KENNEDY SPACE CENTER...AND STILL ANOTHER
 WAS ALONG THE BARRIER ISLAND JUST NORTH OF
 SEBASTIAN INLET. THE STORMS WILL MOVE OFFSHORE
 BY 245 PM...PRODUCING WIND GUSTS TO 60 MPH. MOVE
 TO THE INTERIOR OF A STURDY BUILDING UNTIL THE
 STORMS MOVE OFFSHORE.

STAY TUNED TO LOCAL MEDIA OUTLETS OR NOAA
 WEATHER RADIO FOR THE LATEST SEVERE WEATHER
 INFORMATION.

BULLETIN - EAS ACTIVATION REQUESTED
 TORNADO WARNING
 NATIONAL WEATHER SERVICE MELBOURNE FL
 240 PM EDT SUN JUN 24 2001

THE NATIONAL WEATHER SERVICE HAS ISSUED A

* TORNADO WARNING FOR...
NORTHEASTERN INDIAN RIVER COUNTY
IN EAST CENTRAL FLORIDA

* UNTIL 315 PM EDT

* AT 240 PM EDT...NATIONAL WEATHER SERVICE
DOPPLER RADAR INDICATED A TORNADO OVER
SEBASTIAN INLET...MOVING EAST AT 15 MPH.

THE SAFEST PLACE TO BE DURING A TORNADO IS
IN A STRONG BUILDING ON THE LOWEST FLOOR IN
AN INTERIOR ROOM AWAY FROM WINDOWS. GET
UNDER A WORKBENCH OR OTHER PIECE OF STURDY
FURNITURE. USE BLANKETS OR PILLOWS TO COVER
YOUR HEAD AND BODY.

EVACUATE MOBILE HOMES OR VEHICLES FOR MORE
SUBSTANTIAL SHELTER. IF NO SHELTER IS AVAILABLE...
LIE FLAT IN THE NEAREST UNFLOODED DITCH...
CULVERT...OR OTHER LOW SPOT AND COVER YOUR
HEAD WITH YOUR HANDS. NEVER TRY TO OUTFRAN A
NEARBY TORNADO IN YOUR CAR.

SEVERE WEATHER STATEMENT
NATIONAL WEATHER SERVICE MELBOURNE FL
251 PM EDT SUN JUN 24 2001

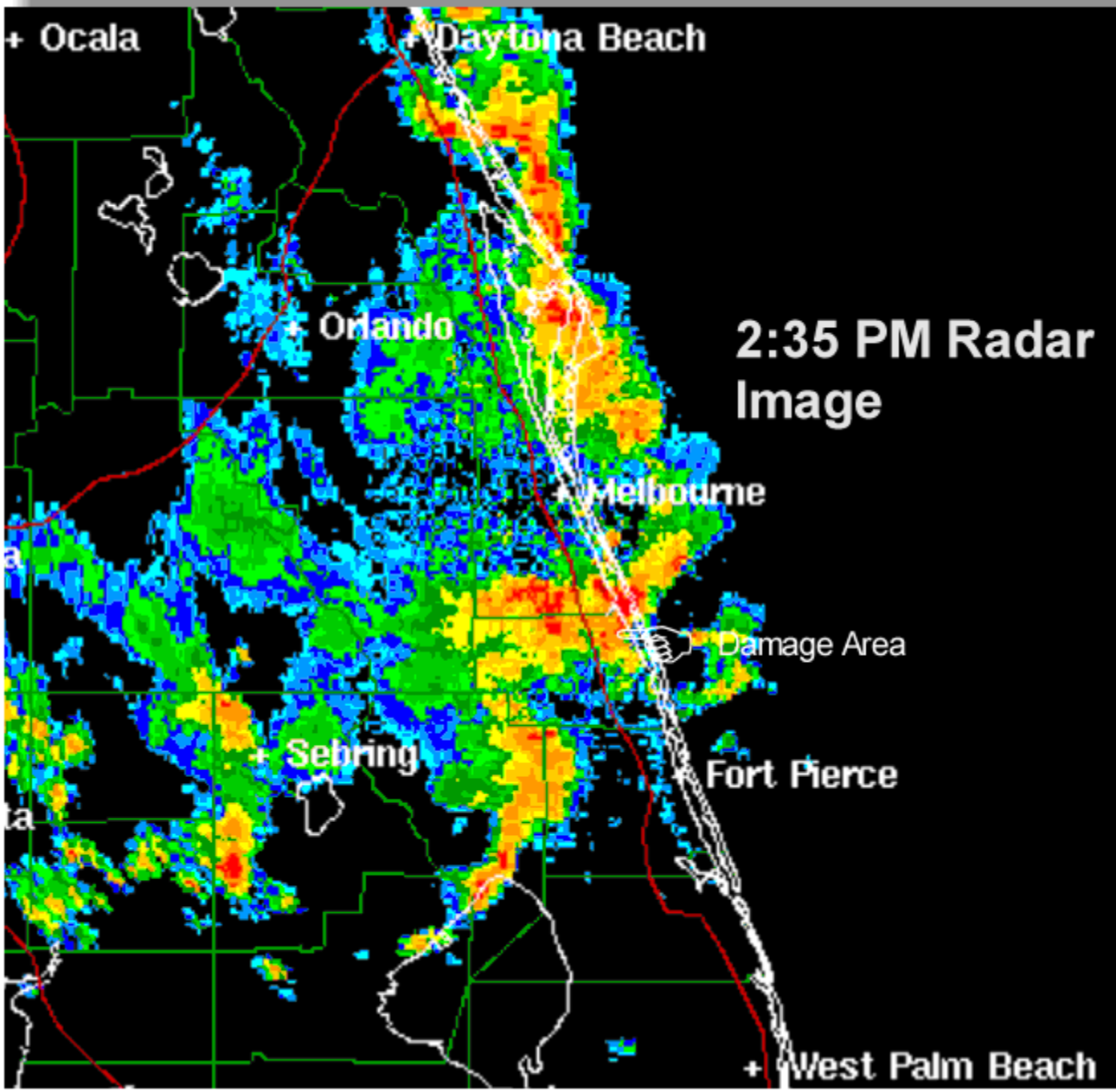
...A TORNADO WARNING CONTINUES FOR EASTERN
INDIAN RIVER COUNTY UNTIL 315 PM EDT...

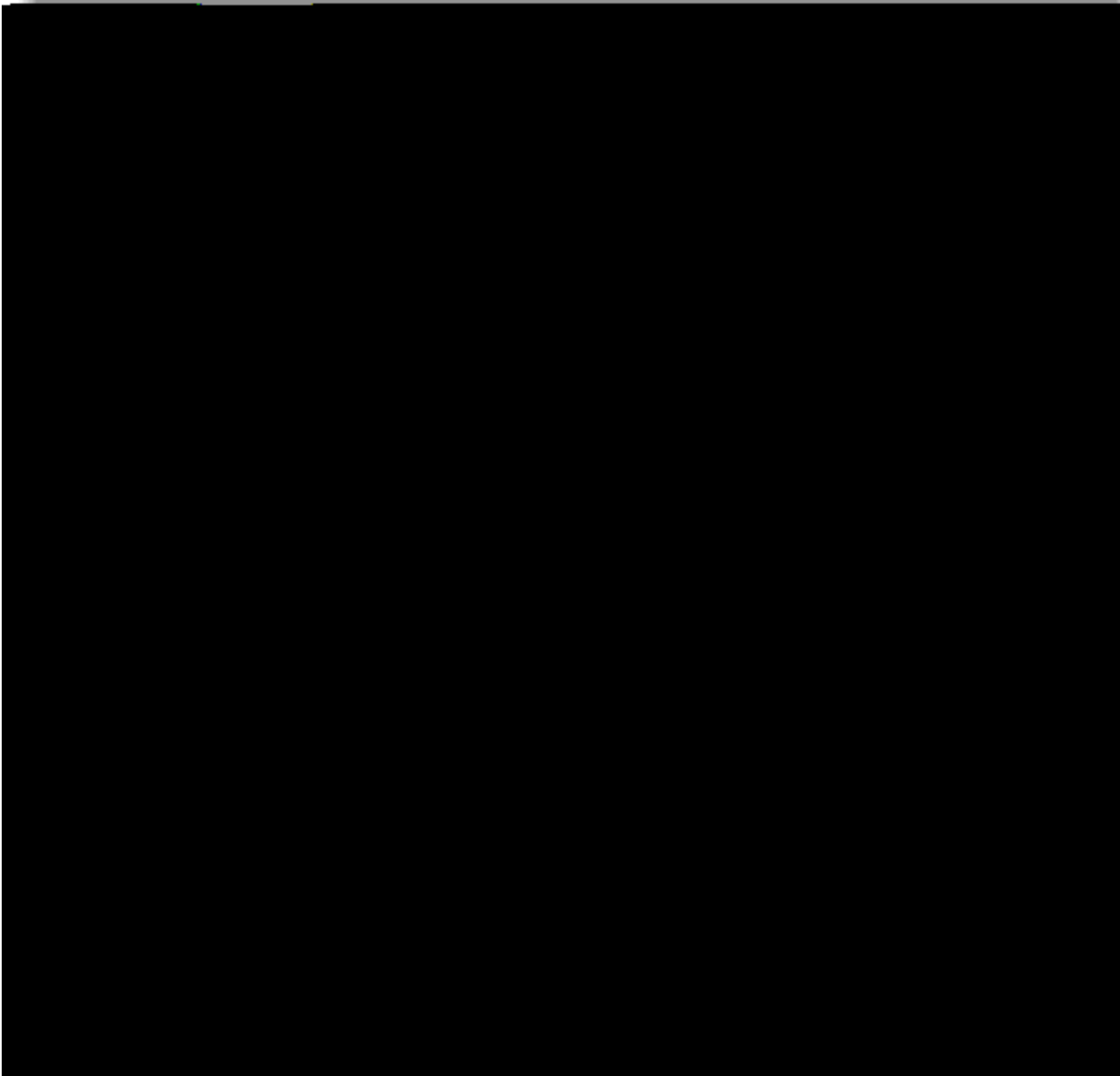
AT 246 PM EDT DOPPLER RADAR INDICATED A SEVERE
THUNDERSTORM CAPABLE OF PRODUCING A TORNADO
NEAR WABASSO...MOVING SOUTHEAST AT 15 MPH.

THE SEBASTIAN POLICE DEPARTMENT REPORTED TREES
DOWN AND CARS FLIPPED AT 245 PM.

THIS IS STILL A DANGEROUS STORM. PEOPLE ALONG THE
COAST OF INDIAN RIVER COUNTY SHOULD SEEK SHELTER
UNTIL THE STORM MOVES OFFSHORE.

STAY TUNED TO LOCAL MEDIA OUTLETS OR NOAA
WEATHER RADIO FOR THE LATEST SEVERE WEATHER
INFORMATION.





**Narrow tornado path through trees as it
approached home #1 and home #2.**



Narrow tornado path through trees



Significant roof damage (F1) to home.



Different perspective of roof damage to same home.



Removed section of roof (inside view).



Roof damage to back of nearby home.



Demolished screen house of nearby home.



Pool enclosure destroyed and roof damaged.