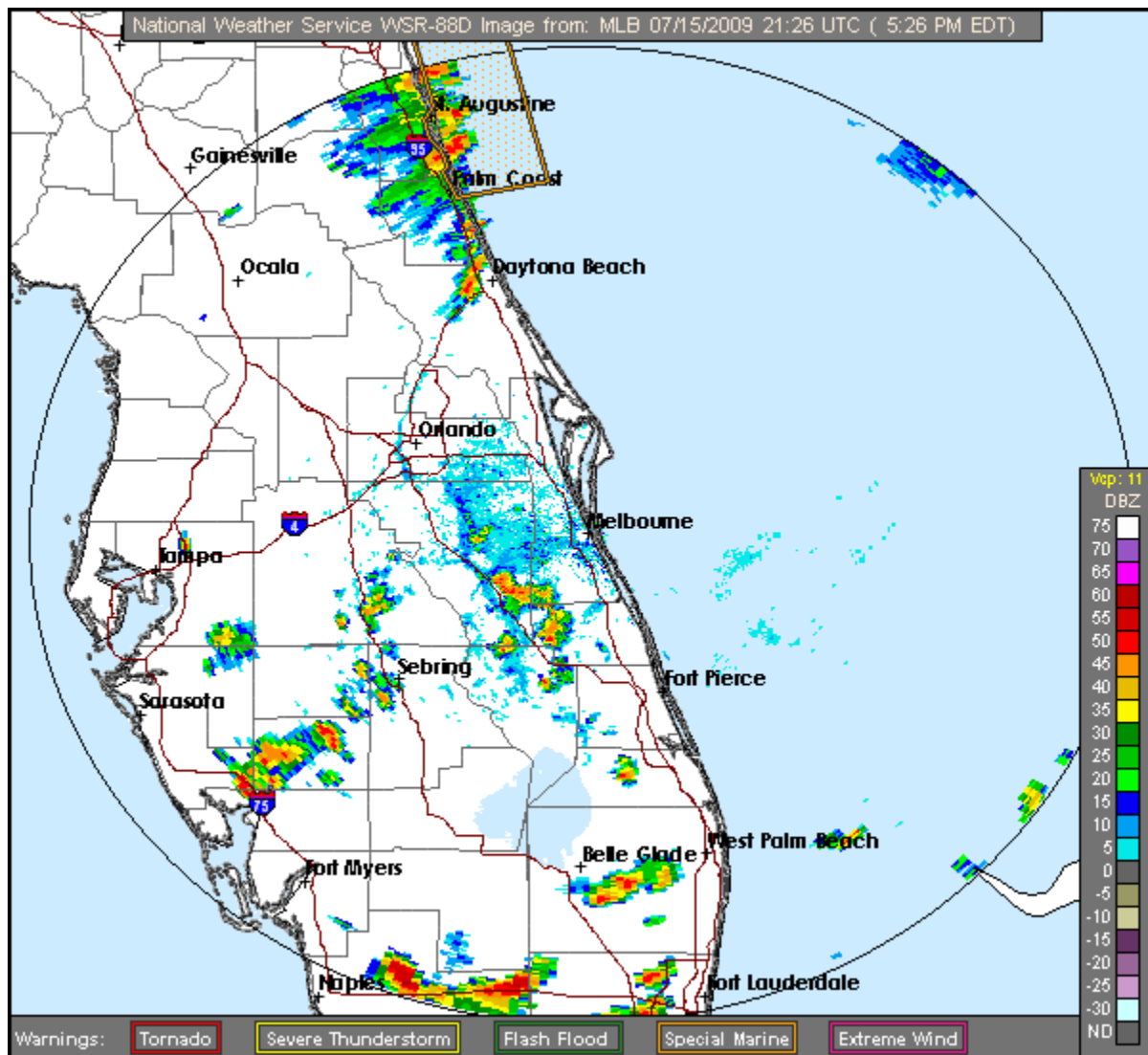
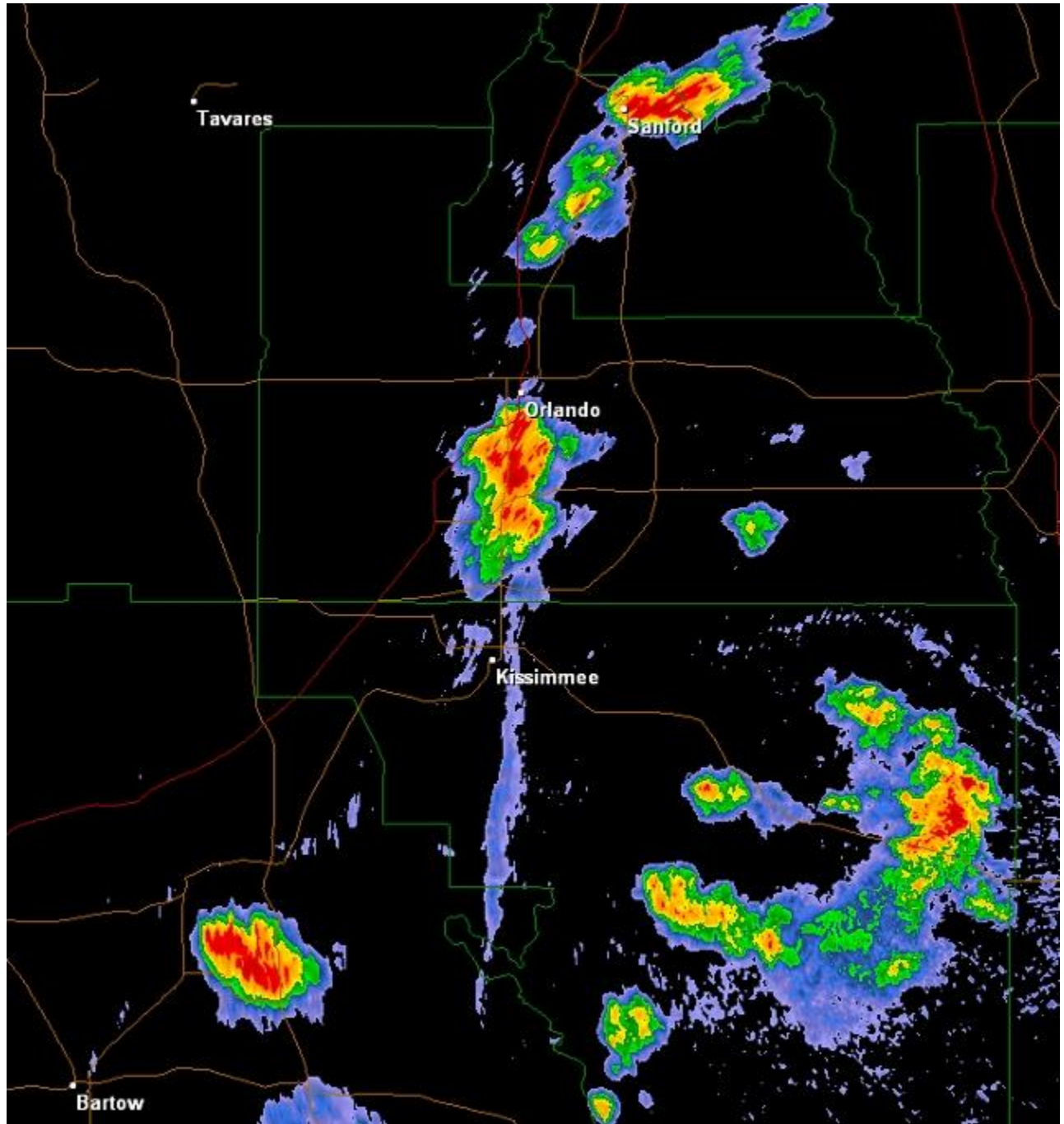


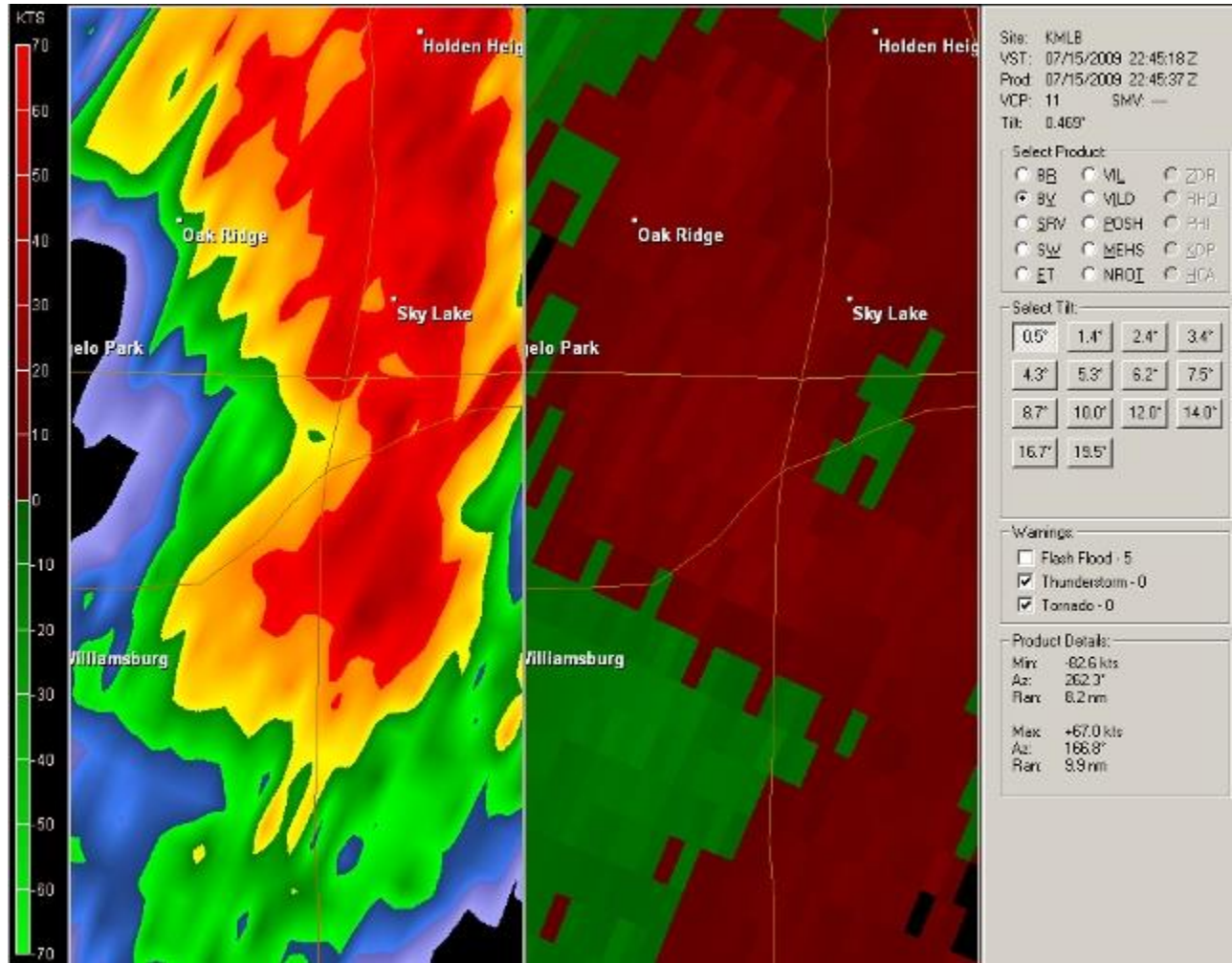
Orange County EF0 Tornado

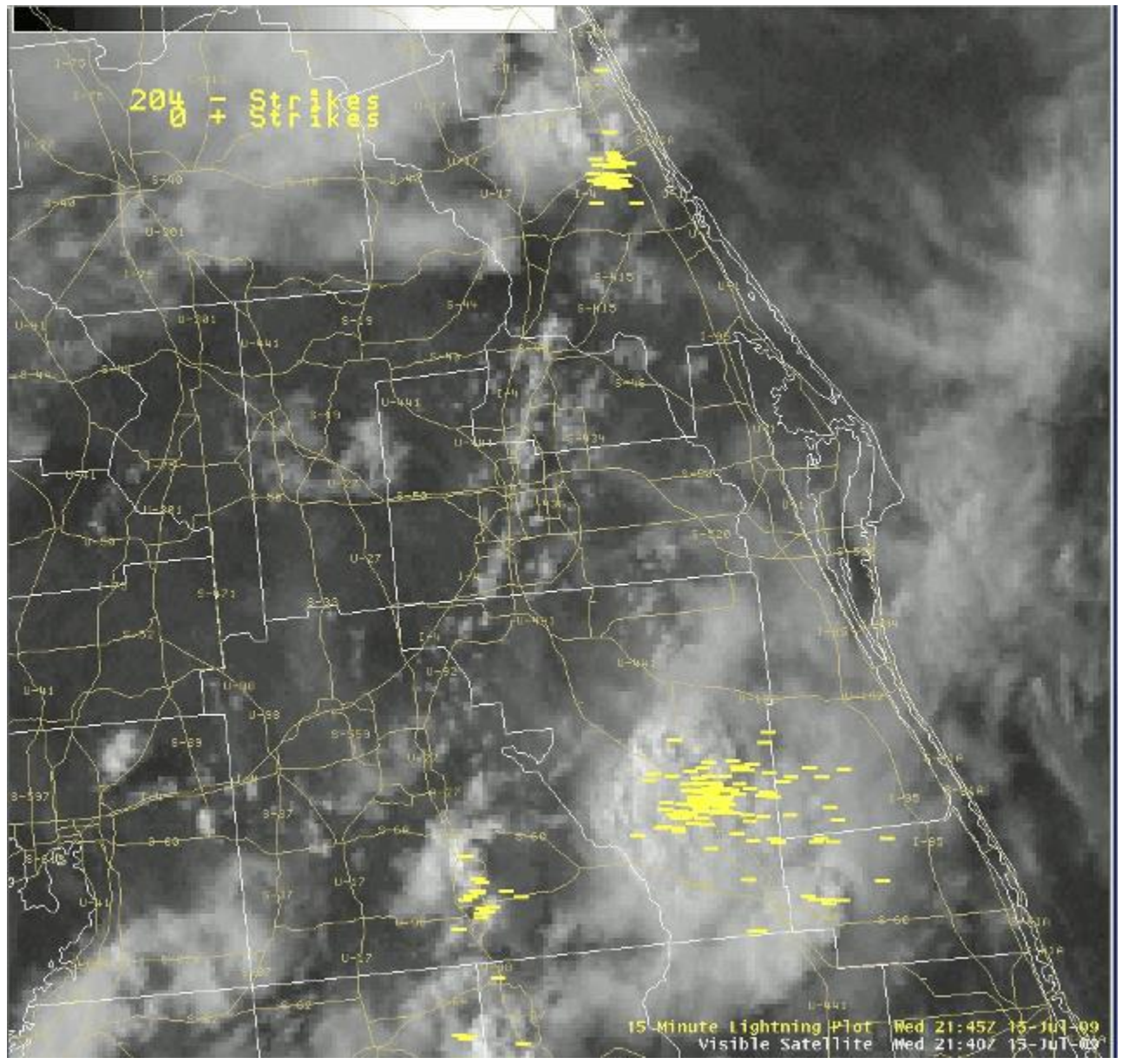
July 15, 2009

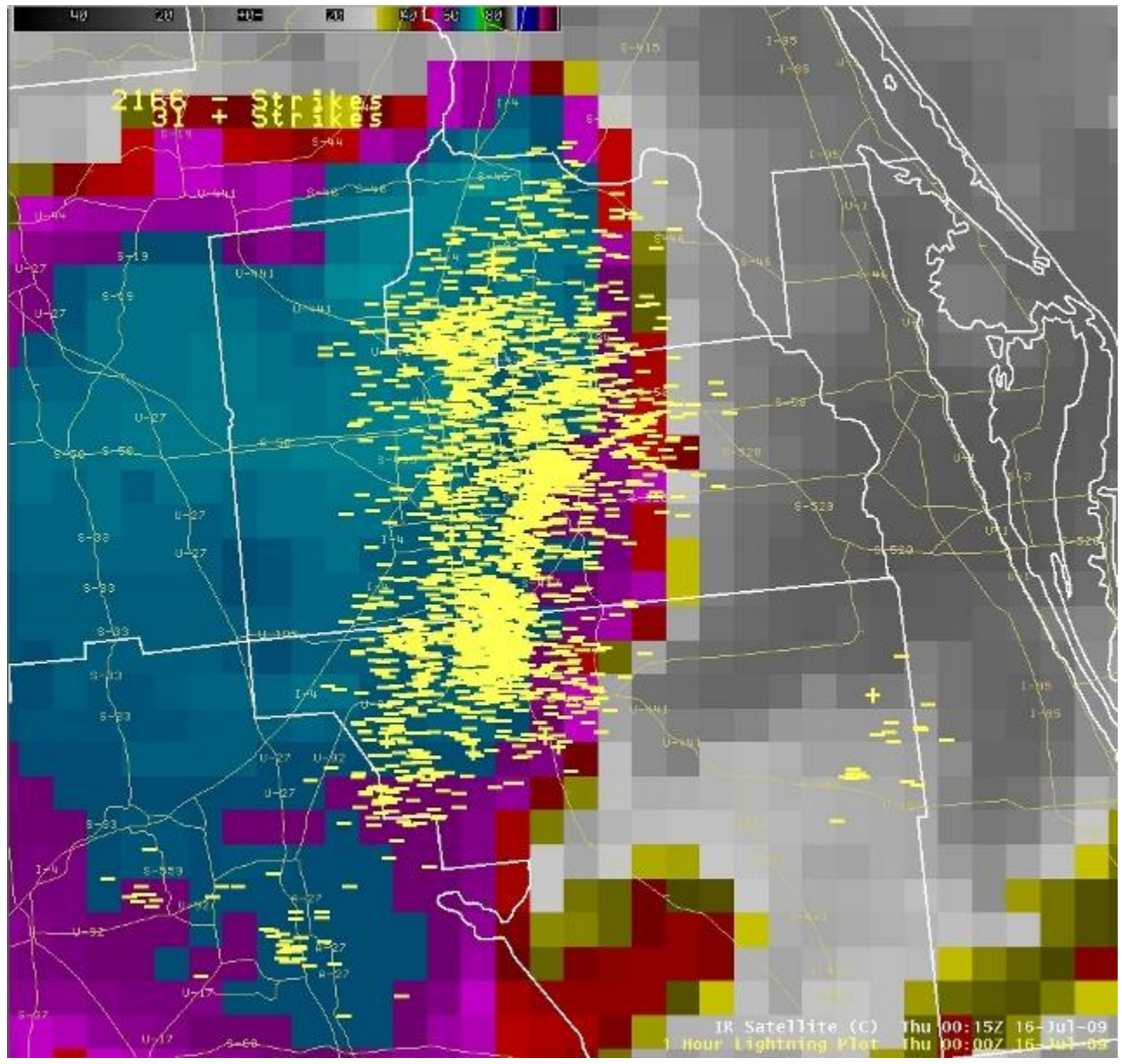
An intense line of thunderstorms developed in the late afternoon and early evening as the east and west coast sea breeze boundaries collided near the Interstate 4 corridor in Orlando. A brief EF0 tornado developed between 650 and 655 pm and damaged a warehouse near State Route 528 and the John Young Parkway where the Ikon Office Solutions building lost most of its roof. The storm also produced excessive cloud to ground lightning strikes and multiple house and apartment fires were reported. Over 2000 cloud to ground lightning strikes were recorded across the Orlando metro area between 7 and 8 pm and over 900 strikes between 8 and 9 pm.

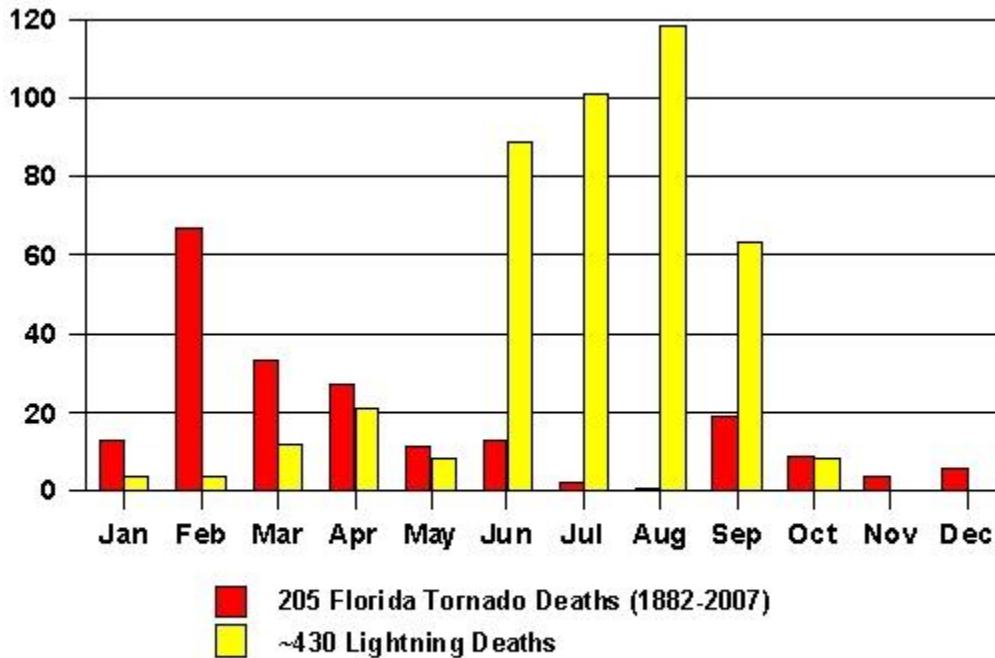












Products Issued by the NWS office in Melbourne:

WWUS82 KMLB 152250
SPSMLB

SPECIAL WEATHER STATEMENT
NATIONAL WEATHER SERVICE MELBOURNE FL
650 PM EDT WED JUL 15 2009

FLZ045-152330-
ORANGE-
650 PM EDT WED JUL 15 2009

...STRONG THUNDERSTORMS AFFECTING CENTRAL ORANGE COUNTY...

AT 648 PM EDT...NATIONAL WEATHER SERVICE DOPPLER RADAR INDICATED A LINE OF STRONG STORMS ALONG HIGHWAY 441 FROM DOWNTOWN ORLANDO TO THE OSCEOLA COUNTY LINE. THE LINE WAS NEARLY STATIONARY.

LOCATIONS IN THE PATH OF THESE STRONG STORMS INCLUDE BELLE ISLE... DOCTOR PHILLIPS...ORLOVISTA AND PINE CASTLE.

THE PRIMARY THREAT WILL BE CLOUD TO GROUND LIGHTNING STRIKES AND GUSTY WINDS OF 40 TO 45 MPH...WHICH MAY CAUSE UNSECURED OBJECTS TO BLOW AROUND. HEAVY RAINFALL WILL TEMPORARILY REDUCE VISIBILITY. SEEK SHELTER INDOORS UNTIL THE STORMS PASS. A BRIEF PERIOD OF SMALL HAIL...PEA TO DIME SIZE...WILL ALSO BE POSSIBLE IN LOCALIZED AREAS.

A BRIEF FUNNEL CLOUD WAS SIGHTED BY A MOTORISTS ALONG INTERSTATE 4 WITH THESE STORMS.

\$\$

WUUS52 KMLB 152307
SVRMLB
FLC095-097-117-160000-

/O.NEW.KMLB.SV.W.0077.090715T2307Z-090716T0000Z/

BULLETIN - EAS ACTIVATION REQUESTED
SEVERE THUNDERSTORM WARNING
NATIONAL WEATHER SERVICE MELBOURNE FL
707 PM EDT WED JUL 15 2009

THE NATIONAL WEATHER SERVICE IN MELBOURNE HAS ISSUED A

* SEVERE THUNDERSTORM WARNING FOR...
CENTRAL ORANGE COUNTY IN FLORIDA
NORTHWESTERN OSCEOLA COUNTY IN FLORIDA
SEMINOLE COUNTY IN FLORIDA

* UNTIL 800 PM EDT.

* AT 705 PM EDT...NATIONAL WEATHER SERVICE DOPPLER RADAR INDICATED A
LINE OF SEVERE THUNDERSTORMS CAPABLE OF PRODUCING PENNY SIZE
HAIL...AND DAMAGING WINDS IN EXCESS OF 60 MPH. THESE STORMS WERE
LOCATED ALONG A LINE EXTENDING FROM MIDWAY TO LONGWOOD TO ORLANDO
TO BUENA VENTURA LAKES...OR ALONG A LINE EXTENDING FROM SANFORD TO
LONGWOOD TO ORLANDO TO BUENA VENTURA LAKES. THESE STORMS WERE
NEARLY STATIONARY.

* OTHER LOCATIONS IN THE WARNING INCLUDE...BUT ARE NOT LIMITED TO...
MIDWAY...PINE CASTLE...FERN PARK...CASSELBERRY...WINTER PARK...
BELLE ISLE...WINTER SPRINGS...UNION PARK...OVIEDO...ORLANDO
INTERNATIONAL AIRPORT...NARCOOSSEE...LAKE JESSUP...GOLDENROD...
GENEVA...EAST LAKE TOHO...CONWAY AND AZALEA PARK

THESE STORMS HAVE REPORTEDLY PRODUCED DAMAGE TO A WAREHOUSE AND SOME
TREES NEAR THE BEACHLINE AT JOHN YOUNG PARKWAY SHORTLY BEFORE 700 PM.

PRECAUTIONARY/PREPAREDNESS ACTIONS...

SEVERE THUNDERSTORMS PRODUCE DAMAGING WINDS IN EXCESS OF 58 MILES AN
HOUR AND OR LARGE DESTRUCTIVE HAIL. FREQUENT TO EXCESSIVE LIGHTNING
AND VERY HEAVY RAIN WILL ALSO BE POSSIBLE. IF THE STORM APPROACHES
YOU...SEEK SHELTER IN AN ENCLOSED BUILDING ON THE LOWEST FLOOR. KEEP
AWAY FROM WINDOWS.

&&

LAT...LON 2875 8144 2884 8137 2881 8122 2879 8119
2879 8115 2880 8113 2879 8107 2869 8115
2851 8120 2825 8122 2825 8148 2857 8149
TIME...MOT...LOC 2306Z 284DEG 2KT 2879 8124 2873 8134
2855 8139 2834 8137

\$\$
CRISTALDI

WFUS52 KMLB 152348
TORMLB
FLC095-117-160030-
/O.NEW.KMLB.TO.W.0022.090715T2348Z-090716T0030Z/

BULLETIN - EAS ACTIVATION REQUESTED
TORNADO WARNING
NATIONAL WEATHER SERVICE MELBOURNE FL

748 PM EDT WED JUL 15 2009

THE NATIONAL WEATHER SERVICE IN MELBOURNE HAS ISSUED A

- * TORNADO WARNING FOR...
CENTRAL ORANGE COUNTY IN FLORIDA...
THIS INCLUDES THE CITIES OF...CHRISTMAS...BITHLO...AZALEA PARK...
SOUTH CENTRAL SEMINOLE COUNTY IN FLORIDA...
THIS INCLUDES THE CITIES OF...OVIEDO...GOLDENROD...
- * UNTIL 830 PM EDT.
- * AT 748 PM EDT...NATIONAL WEATHER SERVICE DOPPLER RADAR INDICATED A
SEVERE THUNDERSTORM CAPABLE OF PRODUCING A TORNADO NEAR UNION
PARK...OR NEAR AZALEA PARK...MOVING NORTHEAST AT 10 MPH.
- * THE TORNADO WILL BE NEAR...
BITHLO AND OVIEDO BY 825 PM EDT...
7 MILES NORTHWEST OF CHRISTMAS BY 830 PM EDT...

PRECAUTIONARY/PREPAREDNESS ACTIONS...

IN ADDITION TO THE TORNADO...THIS STORM IS CAPABLE OF PRODUCING
QUARTER SIZE HAIL AND DESTRUCTIVE STRAIGHT LINE WINDS.

THE SAFEST PLACE TO BE DURING A TORNADO IS IN A STRONG BUILDING ON
THE LOWEST FLOOR...IN AN INTERIOR ROOM SUCH AS A BATHROOM OR CLOSET.
KEEP AWAY FROM WINDOWS. GET UNDER A WORKBENCH OR OTHER PIECE OF
STURDY FURNITURE. USE BLANKETS OR PILLOWS TO COVER YOUR BODY.

EVACUATE MOBILE HOMES OR VEHICLES FOR MORE SUBSTANTIAL SHELTER. IF NO
SHELTER IS AVAILABLE...LIE FLAT IN THE NEAREST DITCH OR OTHER LOW
SPOT AND COVER YOUR HEAD WITH YOUR HANDS. ABANDON YOUR VEHICLE IF THE
TORNADO IS NEARBY.

&&

LAT...LON 2873 8122 2853 8095 2839 8121 2856 8135
TIME...MOT...LOC 2348Z 235DEG 8KT 2854 8121

WUUS52 KMLB 160015
SVRMLB
FLC095-117-127-160115-
/O.NEW.KMLB.SV.W.0078.090716T0015Z-090716T0115Z/

BULLETIN - EAS ACTIVATION REQUESTED
SEVERE THUNDERSTORM WARNING
NATIONAL WEATHER SERVICE MELBOURNE FL
815 PM EDT WED JUL 15 2009

THE NATIONAL WEATHER SERVICE IN MELBOURNE HAS ISSUED A

- * SEVERE THUNDERSTORM WARNING FOR...
CENTRAL ORANGE COUNTY IN FLORIDA
EASTERN SEMINOLE COUNTY IN FLORIDA
SOUTH CENTRAL VOLUSIA COUNTY IN FLORIDA
- * UNTIL 915 PM EDT.
- * AT 813 PM EDT...NATIONAL WEATHER SERVICE DOPPLER RADAR INDICATED A
LINE OF SEVERE THUNDERSTORMS CAPABLE OF PRODUCING PENNY SIZE

HAIL...AND DAMAGING WINDS IN EXCESS OF 60 MPH. THESE STORMS WERE LOCATED ALONG A LINE EXTENDING FROM GENEVA TO UNION PARK...OR ALONG A LINE EXTENDING FROM GENEVA TO AZALEA PARK...AND MOVING EAST AT 5 MPH.

* OTHER LOCATIONS IN THE WARNING INCLUDE...BUT ARE NOT LIMITED TO... MAYTOWN...CHRISTMAS AND BITHLO

PRECAUTIONARY/PREPAREDNESS ACTIONS...

SEVERE THUNDERSTORMS PRODUCE DAMAGING WINDS IN EXCESS OF 58 MILES AN HOUR AND OR LARGE DESTRUCTIVE HAIL. FREQUENT TO EXCESSIVE LIGHTNING AND VERY HEAVY RAIN WILL ALSO BE POSSIBLE. IF THE STORM APPROACHES YOU...SEEK SHELTER IN AN ENCLOSED BUILDING ON THE LOWEST FLOOR. KEEP AWAY FROM WINDOWS.

&&

LAT...LON 2884 8122 2883 8092 2878 8093 2878 8097
2868 8096 2846 8104 2848 8136
TIME...MOT...LOC 0014Z 275DEG 3KT 2874 8113 2855 8122

\$\$

PRELIMINARY LOCAL STORM REPORT...SUMMARY
NATIONAL WEATHER SERVICE MELBOURNE FL
1021 PM EDT WED JUL 15 2009

..TIME...	...EVENT...	...CITY LOCATION...	...LAT.LON...
..DATE...MAG....	..COUNTY LOCATION..ST..	...SOURCE....
..REMARKS..			

0650 PM 07/15/2009	TORNADO	8 SW ORLANDO ORANGE	28.42N 81.47W FL EMERGENCY MNGR
-----------------------	---------	------------------------	------------------------------------

ROOF DAMAGE TO WAREHOUSE AT 2507 INVESTORS ROW NEAR 441 AND TURNPIKE. PRELIMINARY REPORT OF POSSIBLE TORNADO.

0652 PM 07/15/2009	TORNADO	8 SW ORLANDO ORANGE	28.42N 81.47W FL PUBLIC
-----------------------	---------	------------------------	----------------------------

TORNADO SIGHTING NEAR BEACHLINE AND JOHN YOUNG PARKWAY WITH TOUCHDOWN AT OR NEAR ICON BUILDING. DEBRIS ON ROAD AND HANGING FROM POWER LINES. REPORT RELAYED THROUGH ORANGE COUNTY SHERIFF. SO UNITS ON SCENE.

0655 PM 07/15/2009	TORNADO	11 SW ORLANDO ORANGE	28.39N 81.50W FL PUBLIC
-----------------------	---------	-------------------------	----------------------------

TORNADO SIGHTING WITH DEBRIS IN THE AIR AT WILLIAMSBURG SUBDIVISION NEAR THE SOUTHSIDE OF BEACHLINE AND ORANGEWOOD BLVD. REPORT RELAYED THROUGH ORANGE COUNTY SHERIFF. PRELIMINARY REPORT OF POSSIBLE TORNADO.

&&
JRC























Pictures above courtesy of Jim Roberts Florida DEM

Photos below from NWS Storm Survey at Ikon Office Solutions Warehouse.









NWS Storm Survey picture below - Lightning fire damage in Winter Park.

