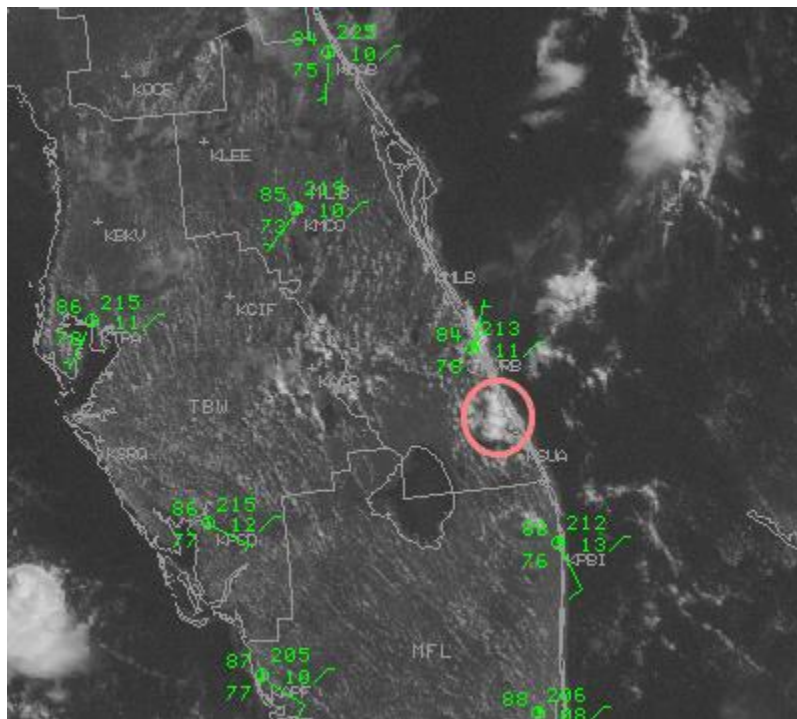


Fort Pierce Tornado/St. Lucie County July 27, 2002



Eyewitness Photo by James Dekker



Visible Satellite Image at 11 AM

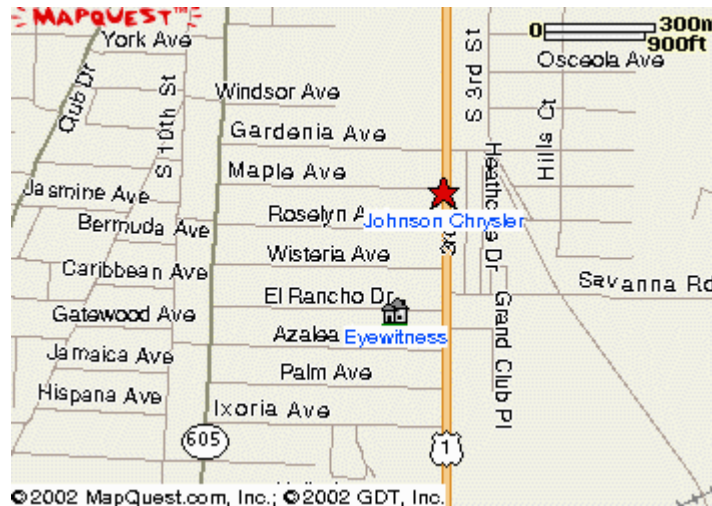
Description:

The damage survey revealed that an F-0 tornado developed and then quickly dissipated in the area of Fort Pierce at US 1 and El Rancho Drive to Maple Avenue. Eyewitnesses described the formation of the funnel and its dissipation between 11:00 am and 11:05 am EDT.

The debris cloud was photographed by eyewitness James Dekker as it was over the Johnson Chrysler-Plymouth car dealership. Most of the service department roof of the dealership was blown off. Approximately 60 to 70 cars were reported damaged by flying debris.

The event was confined to roughly a 300 by 300 meter area between El Rancho Drive and Maple Avenue, on the west side of U.S. 1. The survey of the damage supported development of convergence and cyclonic circulation in the area. Damage pictures show inflow from the North, South, and West.

The approximate damage patch was derived from National Weather Service ground survey.



Products Issued:

SEVERE WEATHER STATEMENT...CORRECTED WORD
NATIONAL WEATHER SERVICE MELBOURNE FL
1017 AM EDT SAT JUL 27 2002

...FUNNEL CLOUD REPORTED ACROSS OKEECHOBEE COUNTY...

A FUNNEL CLOUD WAS REPORTED WITH A DEVELOPING SHOWER ABOUT 8 MILES NORTH OF THE TOWN OF OKEECHOBEE NEAR US ROUTE 441. THE FUNNEL CLOUD DID NOT CAUSE ANY DAMAGE AND DISSIPATED. THIS SHOWER WILL CONTINUE MOVING NORTH AT 15 MPH TOWARD FORT DRUM.

THE ATMOSPHERE WILL BE CONDUCIVE FOR ADDITIONAL FUNNEL CLOUDS TO DEVELOP THROUGH MID DAY. IF SEVERE WEATHER IS SPOTTED IN YOUR AREA CALL THE NATIONAL WEATHER SERVICE IN MELBOURNE AT 321 255 0212.

\$\$

LAT...LON 2763 8079 2723 8071 2724 8095 2764 8106

FPUS72 KMLB 271450
NOWMLB

SHORT TERM FORECAST
NATIONAL WEATHER SERVICE MELBOURNE FL
1048 AM EDT SAT JUL 27 2002

FLZ041-044>047-053-054-058-059-064-141-144-147-271615-
COASTAL VOLUSIA-INDIAN RIVER-INLAND VOLUSIA-MARTIN-NORTHERN BREVARD-

NORTHERN LAKE-OKEECHOBEE-ORANGE-OSCEOLA-SEMINOLE-SOUTHERN BREVARD-
SOUTHERN LAKE-ST. LUCIE-

.NOW...

...FUNNEL CLOUD DEVELOPMENT POSSIBLE THROUGH MID DAY...

THROUGH 1230 PM...ISOLATED SHOWERS WILL CONTINUE TO DEVELOP JUST INLAND FROM HOBE SOUND...STUART AND FORT PIERCE...NEAR I 95 AND THE FLORIDA TURNPIKE. THE SHOWERS WILL MOVE NORTH AT 15 MPH AND AFFECT AREAS FROM PORT SAINT LUCIE TO VERO BEACH WITH A BRIEF PERIOD OF MODERATE TO HEAVY RAIN. OTHER SHOWERS ACROSS OKEECHOBEE COUNTY WILL MOVE NORTH INTO SOUTHERN OSCEOLA COUNTY. THESE SHOWERS WILL MOVE EARLIER THIS MORNING ACROSS OKEECHOBEE COUNTY. THE ATMOSPHERE WILL REMAIN CONDUCIVE FOR ADDITIONAL FUNNEL CLOUDS TO DEVELOP THROUGH MID DAY. REPORT ANY OCCURRENCE OF SEVERE WEATHER TO THE NATIONAL WEATHER SERVICE IN MELBOURNE. BY EARLY AFTERNOON...ISOLATED SHOWERS ARE EXPECTED TO DEVELOP FARTHER NORTH ALONG THE EAST COAST SEA BREEZE IN BREVARD COUNTY AND ALSO NEAR METRO ORLANDO.

\$\$

VOLKMER

Damage Photos:







