

Rockledge Waterspout-Tornado

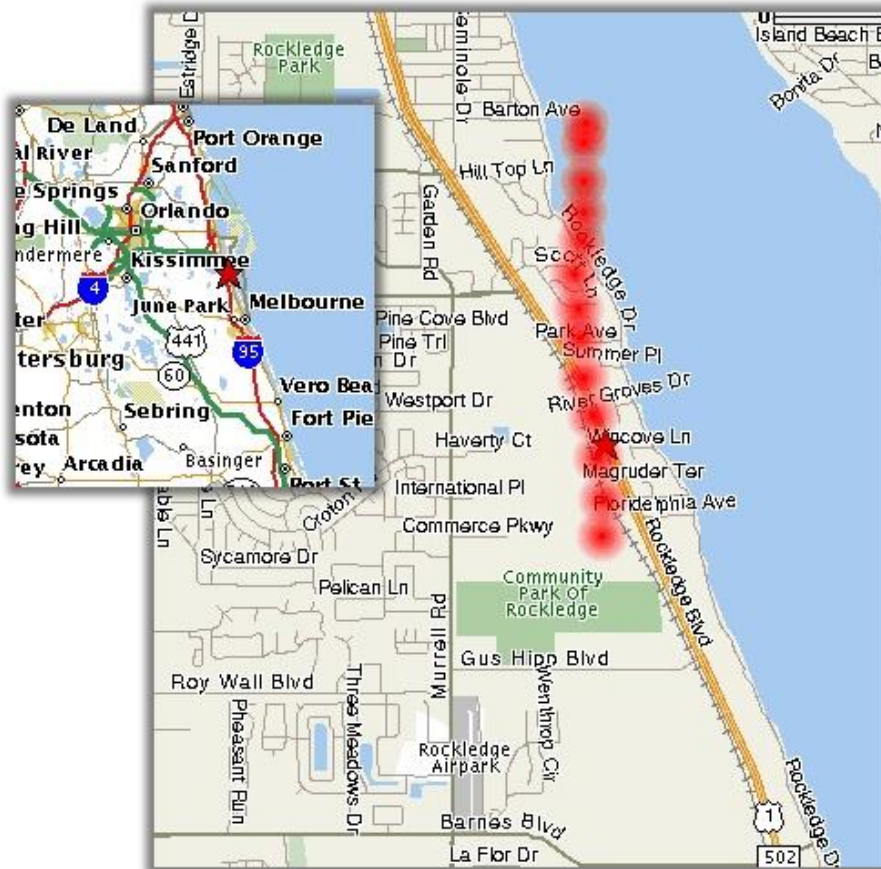
August 6, 2003

Event Discussion

The east coast sea breeze pushed just inland during the early afternoon of 8/6/2003. Meanwhile, isolated showers and lightning storms formed across eastern parts of Orange and Osceola counties. This activity pushed an outflow boundary back towards the coast which collided with the sea breeze. By about 130 pm, an isolated strong storm formed over northern portions of Cape Canaveral due to this boundary collision and pushed slowly east, then gradually diminished.

A second storm fired up further south a short time later and drifted south along the sea breeze boundary. Because of the rapid development and intensification of this storm, a Special Marine Warning was issued at 205 pm for the Brevard county coast. A short time later, numerous reports of a funnel cloud, or tornado, or waterspout occurring in the Rockledge area were received at the Melbourne office. Radar imagery showed that the storm producing the apparent tornado was over the Indian River and moving south, but due to the close proximity to land areas, a tornado warning was issued at 230 pm. The storm weakened by 245 pm and the Tornado Warning was cancelled before 3 pm.

Though this waterspout/tornado was visually impressive, a NWS Survey Team could find no evidence of significant damage, but potted trees and an unattached trellis were knocked over at Rockledge Gardens nursery, on US1. Employees of Rockledge Gardens witnessed the weak tornado as it passed overhead at about 230 pm.





Funnel Cloud Development



Funnel Cloud 2



Funnel Cloud 3



Tornado Stage



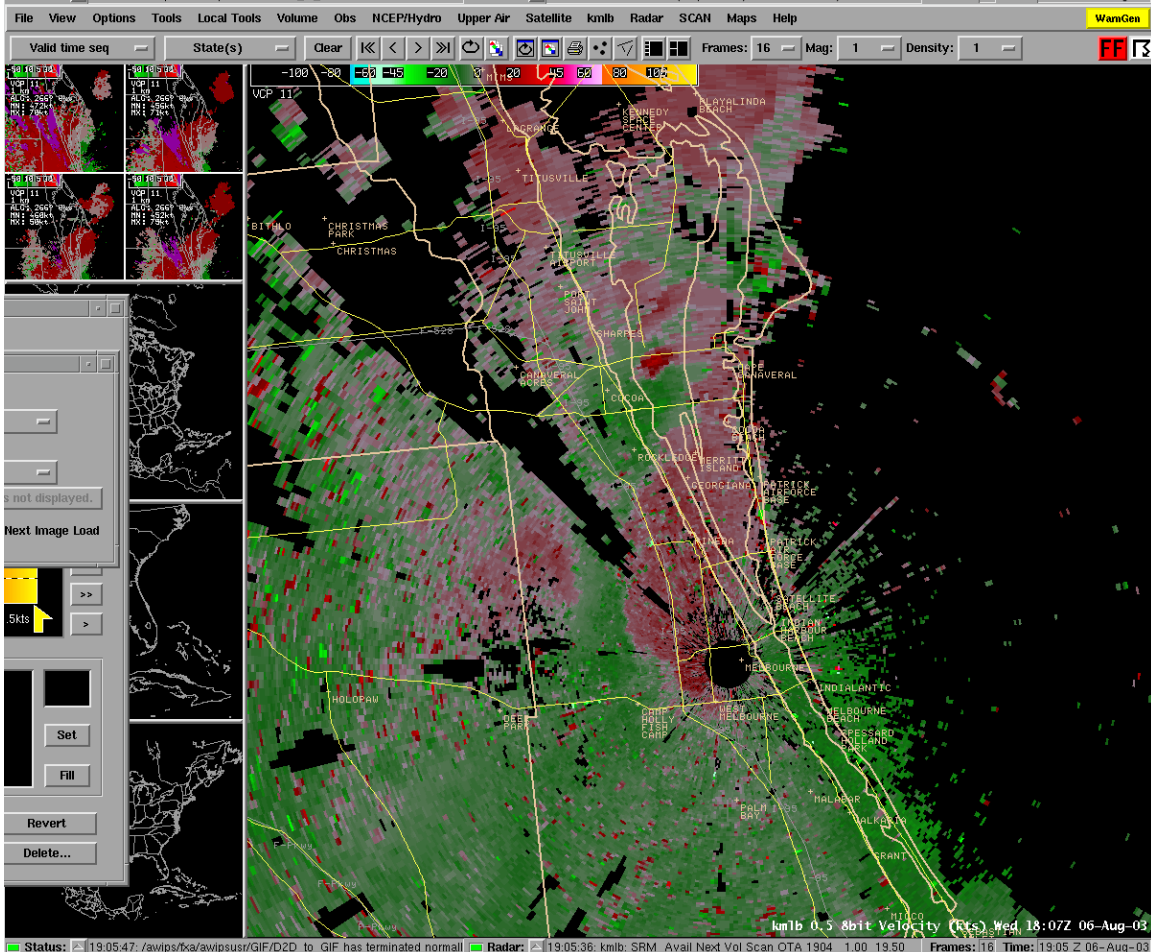
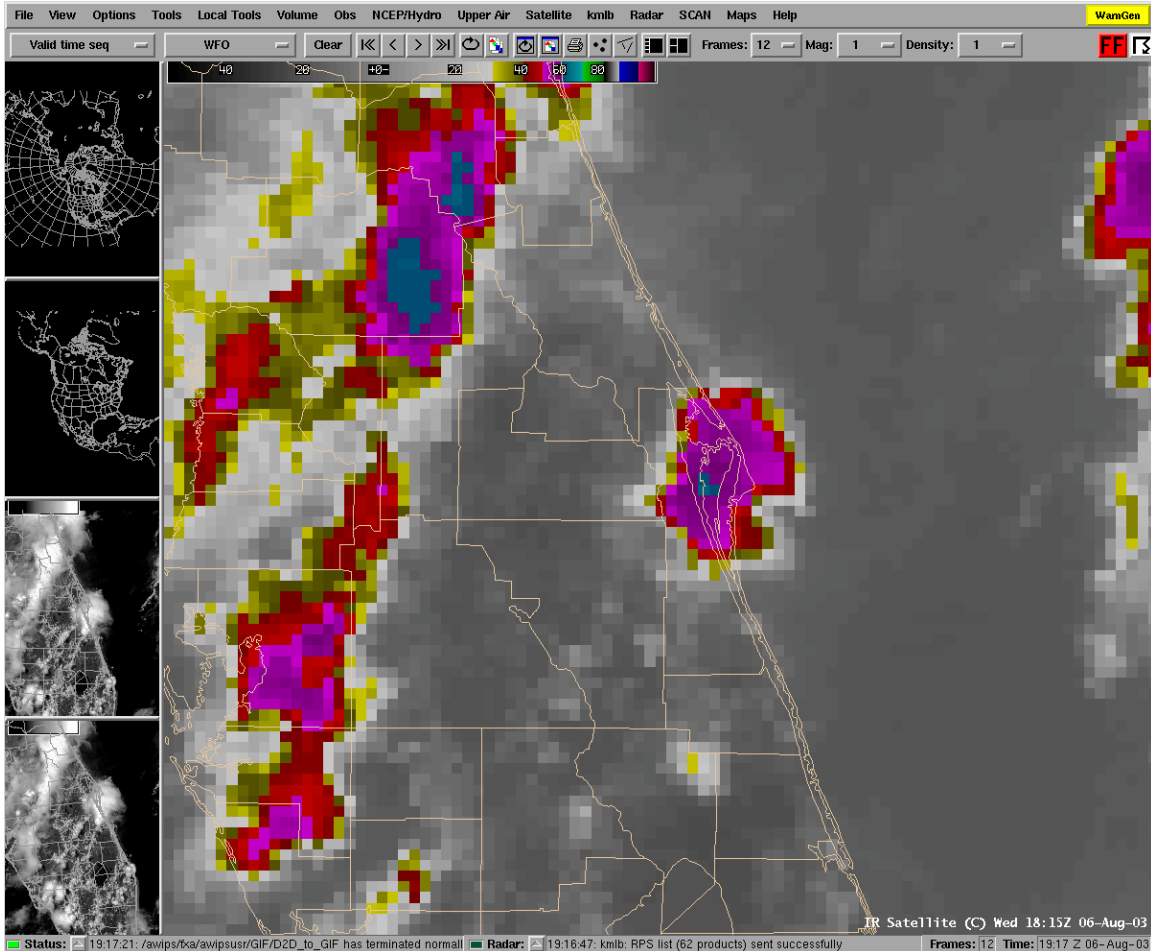
Tornado Stage 2



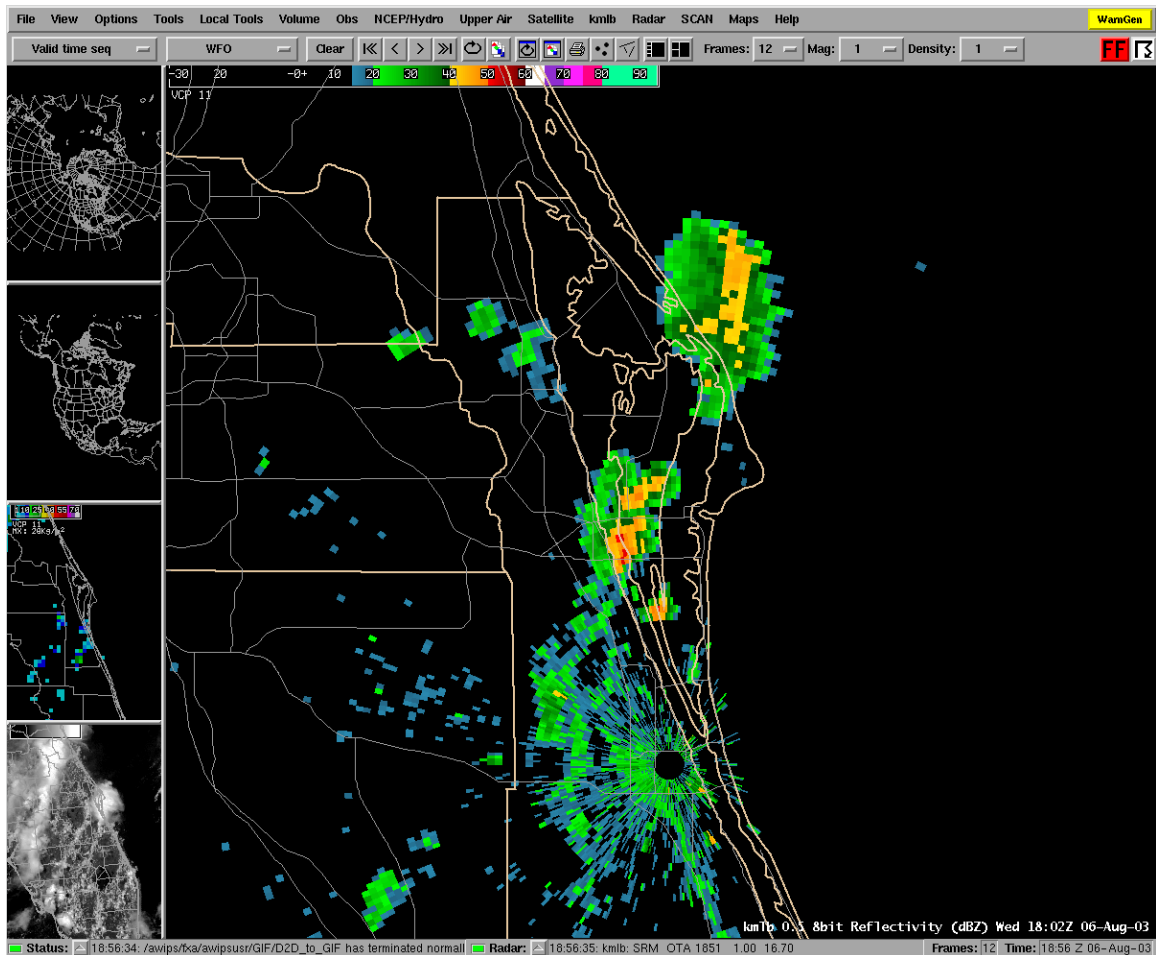
Waterspout Stage



Dissipating or “rope” stage



Status: 19:05:47: /awips/ka/awipsusr/GIF/D2D_to_GIF has terminated normal Radar: 19:05:36: kmlb: SRM Avail Next Vol Scan OTA 1904 1.00 19.50 Frames: 16 Time: 19:05 Z 06-Aug-03



Products Issued:

FLUS42 KMLB 061450
 HWOMLB
 AMZ550-555-570-575-FLZ041-044>047-053-054-058-059-064-141-144-147-
 062000-

EAST CENTRAL FLORIDA HAZARDOUS WEATHER OUTLOOK
 NATIONAL WEATHER SERVICE MELBOURNE FL
 1045 AM EDT WED AUG 6 2003

.DAY ONE...TODAY...

...STRONG TO SEVERE LIGHTNING STORMS EXPECTED ONCE AGAIN TODAY...

DAYTIME HEATING...ABUNDANT MOISTURE...AND A LATE DAY COLLISION OF THE COASTAL SEA BREEZES WILL LEAD TO SCATTERED TO NUMEROUS LIGHTNING STORMS ACROSS EAST CENTRAL FLORIDA FROM MID AFTERNOON THROUGH EARLY EVENING. VERY HEAVY RAINFALL UP TO AROUND TWO INCHES AND STRONG WIND GUSTS IN EXCESS OF 40 MPH MAY ACCOMPANY SOME OF THESE STORMS. A FEW SEVERE THUNDERSTORMS PRODUCING DAMAGING WINDS OR HAIL ARE POSSIBLE.

ADDITIONALLY...ALL STORMS WILL PRODUCE DANGEROUS CLOUD TO GROUND LIGHTNING...WHICH MAY BECOME EXCESSIVE IN STRONGER STORMS. IF YOU HEAR THUNDER...YOU ARE CLOSE ENOUGH TO THE STORM TO BE STRUCK BY LIGHTNING. SEEK SAFE SHELTER IMMEDIATELY.

THE HEAVY RAINFALL MAY LEAD TO LOCALIZED AND TEMPORARY FLOODING OF ROADS...LOW LYING AND POOR DRAINAGE AREAS THAT HAVE RECEIVED HEAVY RAINS OVER THE PAST FEW DAYS.

FOR MARINE INTERESTS...STRONG STORMS MOVING OFFSHORE MAY PRODUCE

GUSTY WINDS...LOCALLY ROUGH SEAS...FREQUENT TO EXCESSIVE CLOUD TO WATER LIGHTNING...AND REDUCED VISIBILITY IN TORRENTIAL RAINFALL THIS AFTERNOON AND EARLY EVENING.

.DAYS TWO THROUGH SEVEN...THURSDAY THROUGH TUESDAY... SCATTERED TO NUMEROUS LIGHTNING STORMS WILL BE THE PRIMARY HAZARD DURING THE AFTERNOON AND EVENING HOURS.

.SPOTTER INFORMATION STATEMENT...

SKYWARN SPOTTERS ARE ASKED TO SELF ACTIVATE THIS AFTERNOON IF STRONG STORMS DEVELOP...AND RELAY ANY REPORTS OF SIGNIFICANT WEATHER INCLUDING RAINFALL AMOUNTS GREATER THAN 2 INCHES TO THE NATIONAL WEATHER SERVICE IN MELBOURNE.

FOR A GRAPHICAL VERSION OF THIS HAZARDOUS WEATHER OUTLOOK...GO TO WWW.WEATHER.GOV AND CLICK ON EAST CENTRAL FLORIDA.

\$\$
CRISTALDI

FPUS72 KMLB 061556
NOWMLB

SHORT TERM FORECAST
NATIONAL WEATHER SERVICE MELBOURNE FL
1152 AM EDT WED AUG 6 2003

AMZ550-555-570-575-FLZ041-044>047-053-054-058-059-064-141-144-147-061745-
BREVARD-INDIAN RIVER-LAKE-MARTIN-OKEECHOBEE-ORANGE-OSCEOLA-SEMINOLE-ST. LUCIE-VOLUSIA-FLAGLER BEACH TO JUPITER INLET OUT TO 60 NM-

.NOW...
THROUGH 2 PM...ISOLATED SHOWERS AND LIGHTNING STORMS WILL INCREASE IN COVERAGE AND INTENSITY ACROSS EAST CENTRAL FLORIDA. STORMS WILL BEGIN TO INCREASE NEAR THE EAST COAST FROM BREVARD COUNTY SOUTHWARD ...WHILE ACTIVITY ALONG THE WEST COAST SEA BREEZE BEGINS TO SPREAD INTO LAKE COUNTY. ISOLATED STORMS MAY ALSO DEVELOP INLAND ALONG LAKE BREEZE BOUNDARIES.

ALL OF THE ACTIVITY WILL MOVE NORTHEAST AT 10 MPH. A FEW LIGHTNING STORMS COULD PRODUCE BETWEEN ONE AND TWO INCHES OF RAINFALL...BRIEF GUSTY WINDS...AND FREQUENT LIGHTNING.

\$\$
CRISTALDI

FPUS72 KMLB 061752
NOWMLB

SHORT TERM FORECAST
NATIONAL WEATHER SERVICE MELBOURNE FL
151 PM EDT WED AUG 6 2003

AMZ550-555-570-575-FLZ041-044>047-053-054-058-059-064-141-144-147-061915-
COASTAL VOLUSIA-COCOA BEACH TO JUPITER INLET 20 NM TO 60 NM OFFSHORE-COCOA BEACH TO JUPITER INLET OUT TO 20 NM-
FLAGLER BEACH TO COCOA BEACH 20 NM TO 60 NM OFFSHORE-
FLAGLER BEACH TO COCOA BEACH OUT TO 20 NM-INDIAN RIVER-
INLAND VOLUSIA-MARTIN-NORTHERN BREVARD-NORTHERN LAKE-OKEECHOBEE-

ORANGE-OSCEOLA-SEMINOLE-SOUTHERN BREVARD-SOUTHERN LAKE-ST. LUCIE-

.NOW...

THROUGH 330 PM...SHOWERS AND LIGHTNING STORMS WILL INCREASE IN
COVERAGE AND INTENSITY ACROSS EAST CENTRAL FLORIDA.

STORMS WILL BEGIN TO INCREASE NEAR THE EAST COAST...ESPECIALLY
FROM BREVARD COUNTY TO VERO BEACH. ACTIVITY WILL ALSO SPREAD
EASTWARD ACROSS THE INTERIOR. BOUNDARY INTERACTIONS WILL LEAD TO THE
DEVELOPMENT OF ISOLATED STRONG STORMS WITH FREQUENT LIGHTNING STRIKES
AND 2 INCH DOWNPOURS.

\$\$
RL

WHUS52 KMLB 061806
SMWMLB
AMZ550-555-061930-

BULLETIN - IMMEDIATE BROADCAST REQUESTED
SPECIAL MARINE WARNING
NATIONAL WEATHER SERVICE MELBOURNE FL
205 PM EDT WED AUG 6 2003

THE NATIONAL WEATHER SERVICE IN MELBOURNE HAS ISSUED A

* SPECIAL MARINE WARNING FOR THE COASTAL WATERS...

FROM MOSQUITO LAGOON TO SEBASTIAN INLET OUT TO 20 NM.

* UNTIL 330 PM EDT

* AT 202 PM EDT...NATIONAL WEATHER SERVICE DOPPLER RADAR INDICATED
ISOLATED STRONG THUNDERSTORMS DEVELOPING NEAR CAPE
CANAVERAL...MOVING EAST AT 10 TO 15 MPH. ADDITIONAL STORMS ARE
EXPECTED TO DEVELOP SOUTHWARD ALONG THE SEA BREEZE IN BREVARD COUNTY
AND PUSH BACK TO THE COAST.

AS THESE STORMS CROSS THE INTRACOASTAL WATERS...BARRIER ISLANDS AND
OVER THE ATLANTIC...THEY WILL PRODUCE STRONG GUSTY WINDS...ROUGH
SEAS...HEAVY DOWNPOURS AND FREQUENT DANGEROUS LIGHTNING. TRY TO
AVOID THESE STORMS IF POSSIBLE. IF YOU GET CAUGHT OFFSHORE...MAKE
SURE ALL SAFETY GEAR IS AVAILABLE AND LIFE JACKETS ARE BEING WORN BY
YOU AND YOUR CREW.

LAT...LON 2875 8087 2787 8062 2788 8020 2881 8042

\$\$
RL

WFUS52 KMLB 061830
TORMLB
FLC009-061900-

BULLETIN - EAS ACTIVATION REQUESTED
TORNADO WARNING
NATIONAL WEATHER SERVICE MELBOURNE FL
230 PM EDT WED AUG 6 2003

THE NATIONAL WEATHER SERVICE IN MELBOURNE HAS ISSUED A

* TORNADO WARNING FOR...
EASTERN BREVARD COUNTY

IN EAST CENTRAL FLORIDA

* UNTIL 300 PM EDT

* AT 226 PM EDT...NATIONAL WEATHER SERVICE DOPPLER RADAR INDICATED A TORNADO OVER ROCKLEDGE...OR ABOUT 2 MILES EAST OF ROCKLEDGE... MOVING SOUTH AT 10 MPH.

* THE TORNADO IS EXPECTED TO BE...
NEAR MERRITT ISLAND...ROCKLEDGE AT 235 PM EDT
NEAR PATRICK AIR FORCE BASE AT 250 PM EDT

THE SAFEST PLACE TO BE DURING A TORNADO IS IN A STRONG BUILDING ON THE LOWEST FLOOR IN AN INTERIOR ROOM AWAY FROM WINDOWS. GET UNDER A WORKBENCH OR OTHER PIECE OF STURDY FURNITURE. USE BLANKETS OR PILLOWS TO COVER YOUR HEAD AND BODY.

LAT...LON 2875 8087 2787 8062 2788 8020 2881 8042

\$\$
RL

WWUS52 KMLB 061852
SVSMLB
FLC009-061915-

SEVERE WEATHER STATEMENT
NATIONAL WEATHER SERVICE MELBOURNE FL
252 PM EDT WED AUG 6 2003

...THE TORNADO WARNING FOR EASTERN BREVARD COUNTY HAS BEEN CANCELLED...

AT 249 PM EDT NATIONAL WEATHER SERVICE RADAR INDICATED THAT THE SEVERE THUNDERSTORM AND TORNADO THAT PROMPTED THE WARNING HAD WEAKENED AND NO LONGER APPEARED CAPABLE OF PRODUCING TORNADOES OR OTHER SEVERE WEATHER...THUS THE WARNING HAS BEEN CANCELLED.

A SPECIAL MARINE WARNING CONTINUES FOR BREVARD COUNTY UNTIL 330 PM AS RADAR INDICATED STORMS COULD PRODUCE 40 TO 50 MPH WINDS NEAR THE COAST ALONG WITH TORRENTIAL DOWNPOURS. FREQUENT LIGHTNING STRIKES ARE ALSO OCCURRING.

NUMEROUS REPORTS OF FUNNEL CLOUD SIGHTINGS HAVE BEEN RECEIVED ALONG WITH MINOR DAMAGE AS A WATERSPOUT MOVED ONSHORE FROM THE INDIAN RIVER IN THE ROCKLEDGE AND MERRITT ISLAND AREA.

STAY TUNED TO LOCAL MEDIA OUTLETS OR NOAA WEATHER RADIO FOR THE LATEST SEVERE WEATHER INFORMATION.

\$\$
RL