

Port St. Lucie Micro-Burst

August 27, 2002

Early morning storms along the west central Florida coast produced an outflow boundary which moved east across the peninsula, reaching the east coast by mid afternoon. This boundary interacted with the east coast sea breeze, which resulted in the development of storms, which rapidly intensified. The storms then moved east to northeast across coastal sections from Brevard county to Martin county. A few of the storms became strong with torrential downpours, frequent lightning and wind gusts around 50 mph. Reports from the affected area stated that the storm occurred at approximately 2:40 PM.

The storm survey team arrived at approximately 5:00 PM, and documented damage in the area. The team determined that physical evidence and radar depictions from the time of the storm best supported the occurrence of a micro-burst. Residents did not report a funnel cloud or tornado. There were no injuries reported and damage was restricted to lightly built aluminum carports and porches. There was no damage to trees or to more substantial structures in the area.

Map of affected area:



Damage Photo at Location 1:



Damage Photo at Location 2:



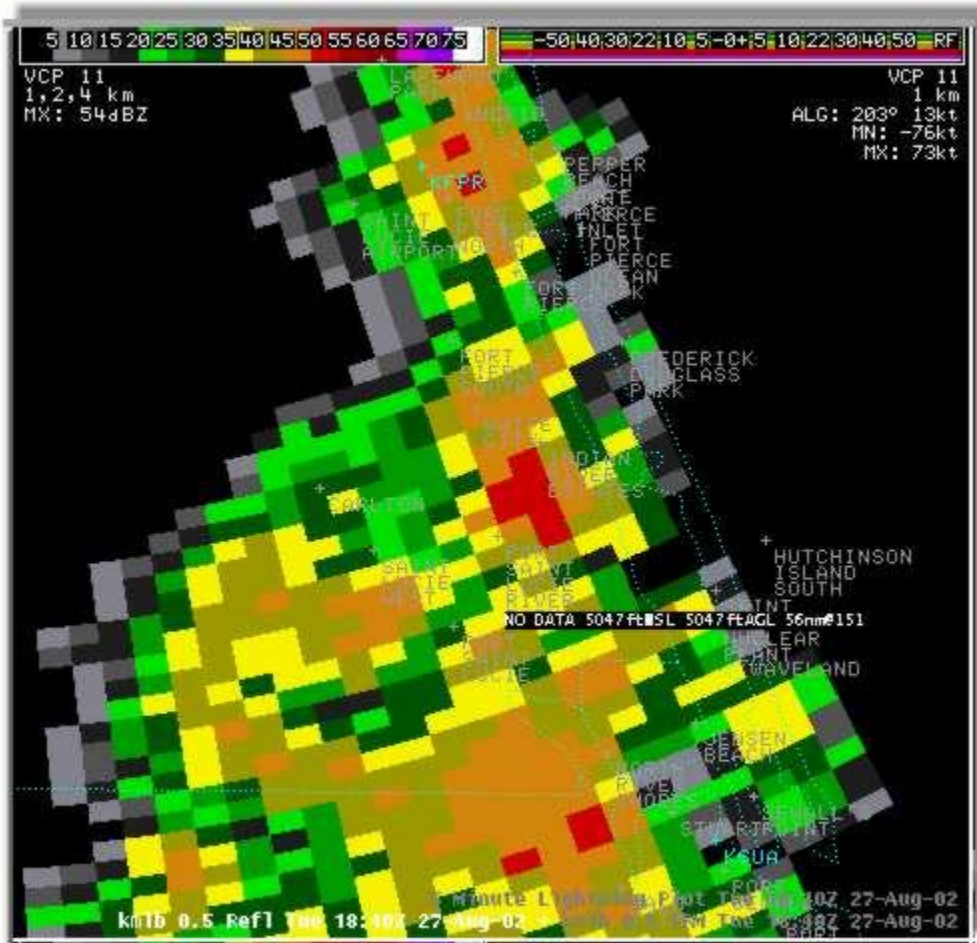
Damage Photo at Location 4:



Damage Photo at Location 5:



Radar Imagery from NWS Melbourne WSR-88D:



Reflectivity at 1831z (2:31 PM)



Storm Relative Motion at 1940z (2:40 PM)