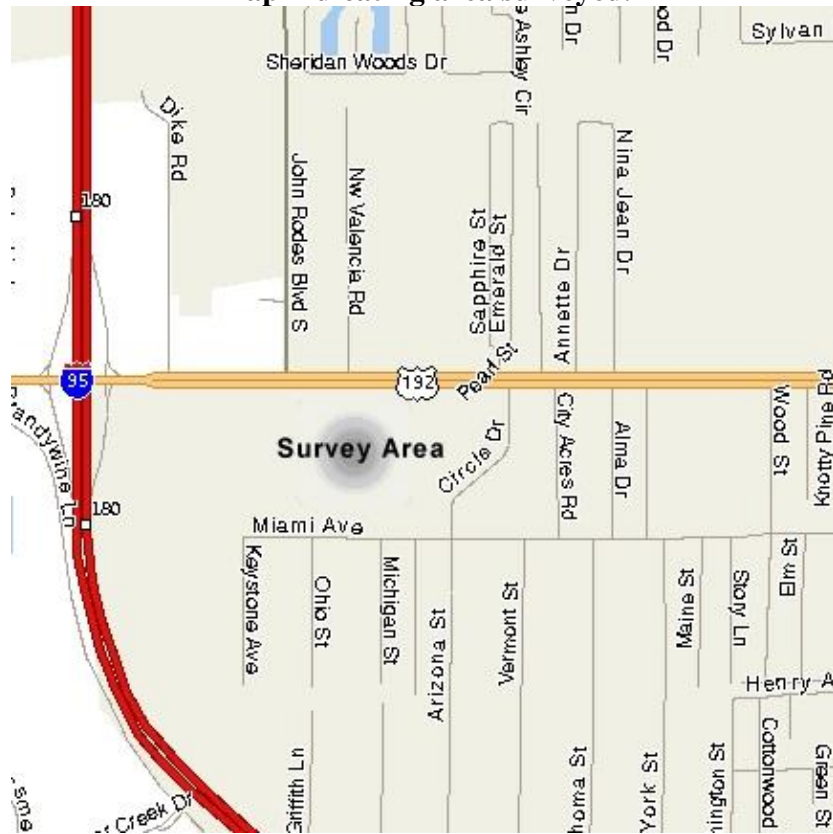


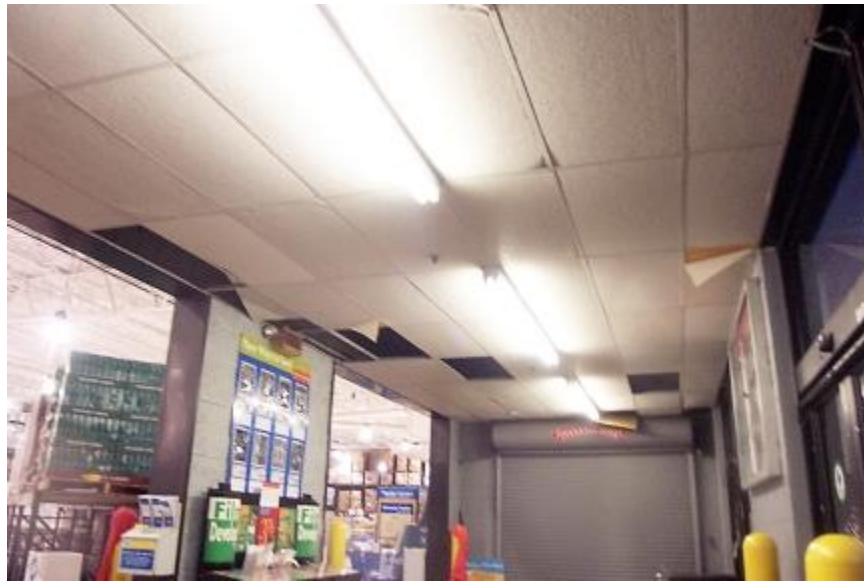
West Melbourne Microburst November 16, 2002

Severe thunderstorms moved up from southwest Brevard county, producing a damaging [microburst](#) in the area of Sam's Club in west Melbourne at about 4:15 pm on November 16, 2002. The damage survey supported the occurrence of a microburst event, with some swirling winds generated as the winds flowed around structures. A severe thunderstorm warning was issued at 3:30 PM, outlining the anticipated path of the storms and highlighting the West Melbourne area in the storm's path.

Map indicating area surveyed.



Roof damage to a building

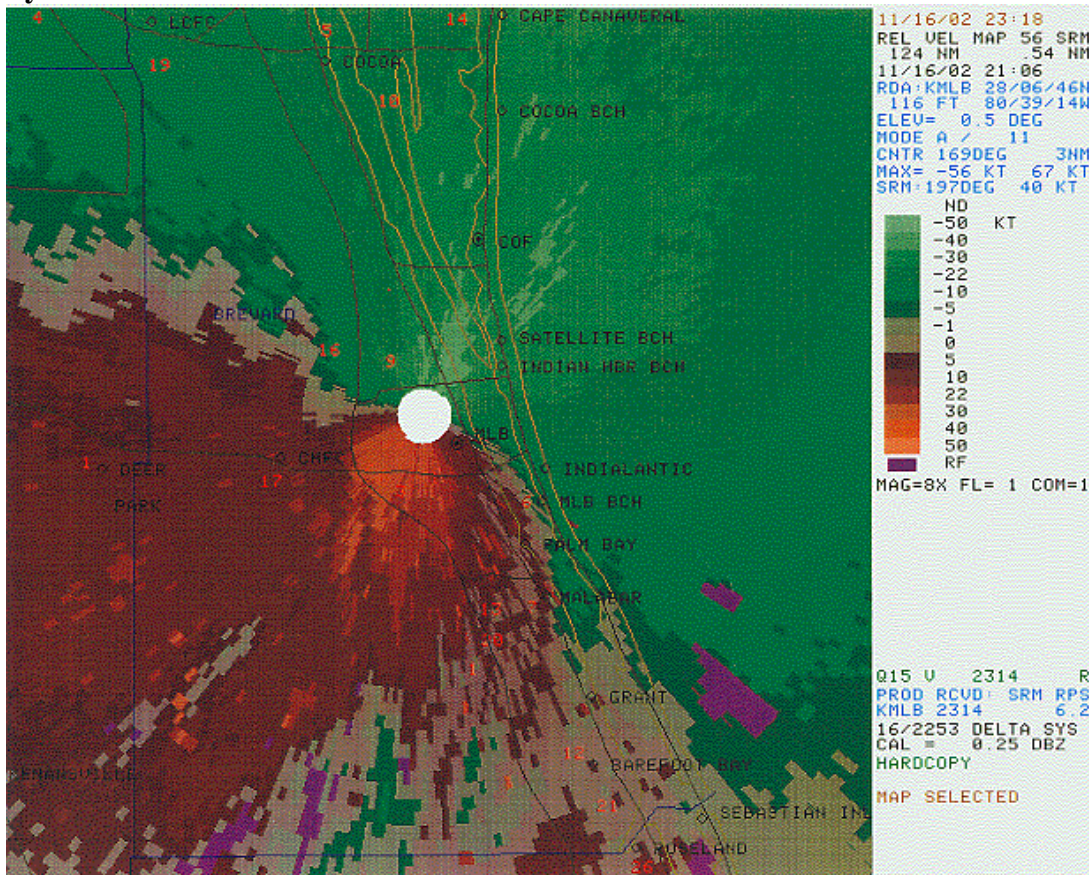


Damage to ceiling inside of building

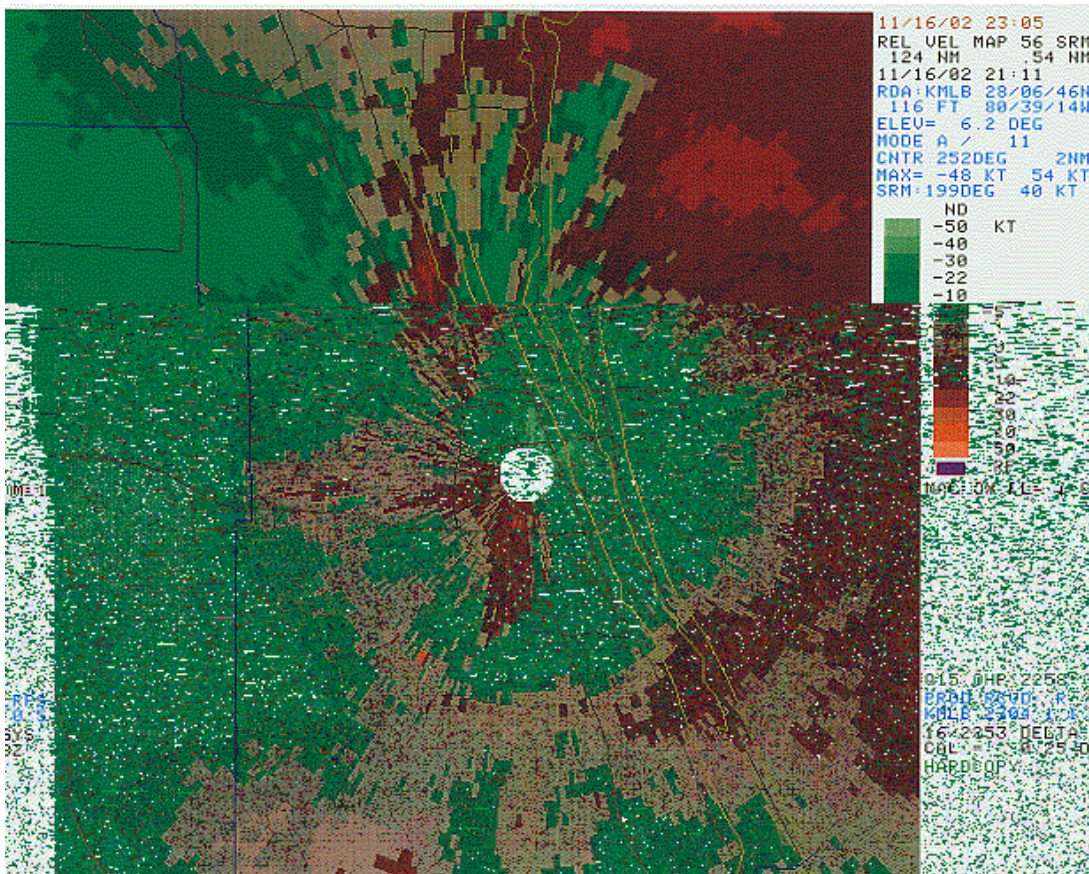


1800 pound air conditioning unity torn from roof

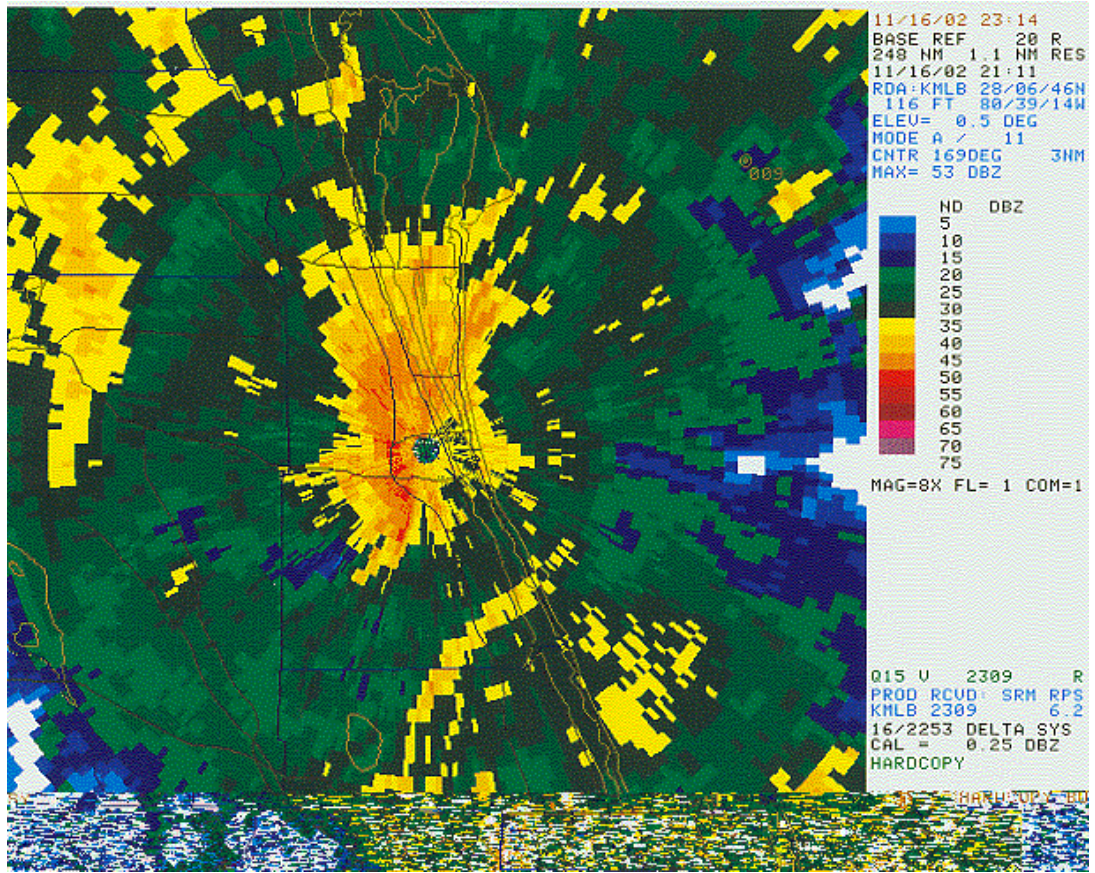
Radar Imagery:



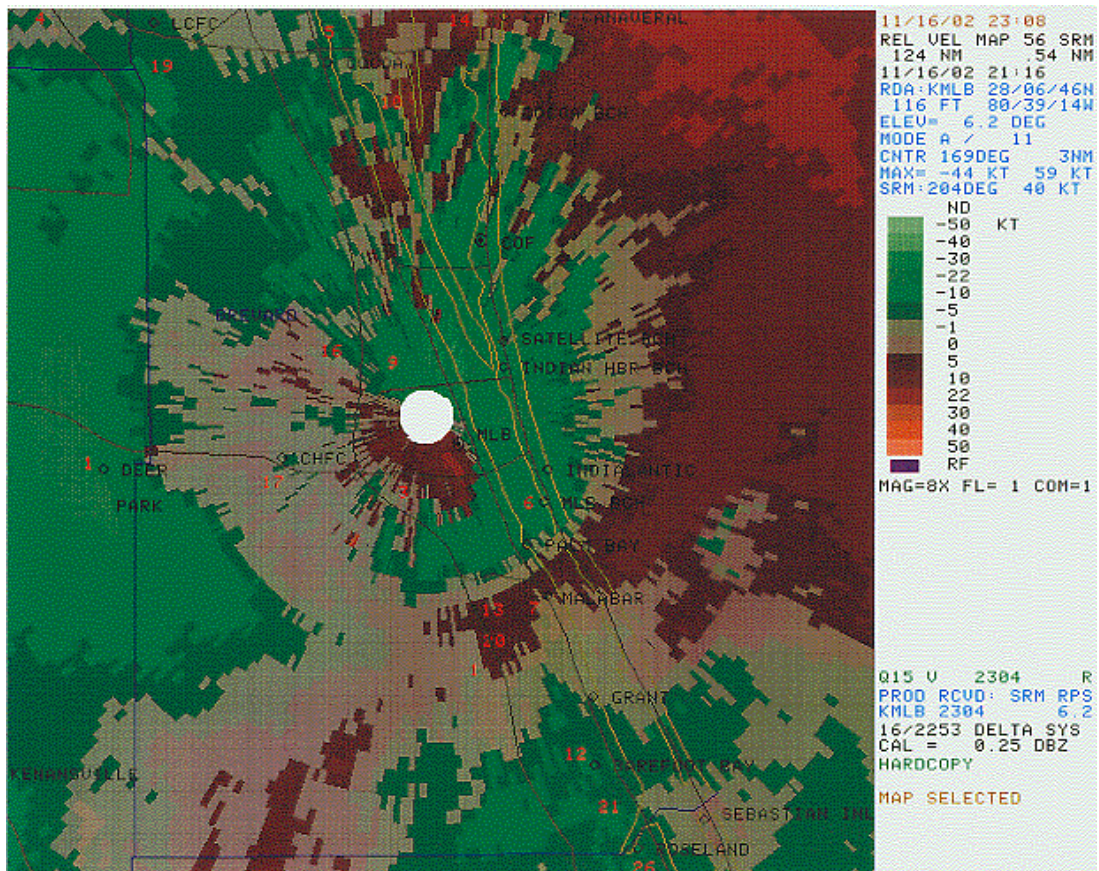
Velocity Image at 4:06 PM



Velocity Image at 4:11 PM



Reflectivity Image at 4:11 PM



Velocity Image at 4:16 PM

Severe thunderstorm warning issued at 3:30 PM:

WUUS52 KMLB 162032
SVRMLB
FLC009-162130-

BULLETIN - EAS ACTIVATION REQUESTED
SEVERE THUNDERSTORM WARNING
NATIONAL WEATHER SERVICE MELBOURNE FL
330 PM EST SAT NOV 16 2002

THE NATIONAL WEATHER SERVICE IN MELBOURNE HAS ISSUED A

* SEVERE THUNDERSTORM WARNING FOR...
BREVARD COUNTY
IN EAST CENTRAL FLORIDA

* UNTIL 430 PM EST

* AT 330 PM EST...NATIONAL WEATHER SERVICE DOPPLER RADAR INDICATED A
LINE OF SEVERE THUNDERSTORMS FROM LONE CABBAGE FISH CAMP TO 16
MILES SOUTHWEST OF PALM BAY...MOVING EAST AT 25 MPH.

* SEVERE THUNDERSTORMS WILL BE...
NEAR SHARPES...CAMP HOLLY FISH CAMP AT 345 PM EST
NEAR ROCKLEDGE...COCOA AT 350 PM EST
NEAR WEST MELBOURNE...PALM BAY AT 355 PM EST
NEAR COCOA BEACH AT 405 PM EST
NEAR CAPE CANAVERAL AT 410 PM EST

SEVERE THUNDERSTORMS PRODUCE DAMAGING WINDS IN EXCESS OF 58 MILES AN
HOUR...DESTRUCTIVE HAIL...DEADLY LIGHTNING AND VERY HEAVY RAIN. IF
THE STORM APPROACHES YOU...MOVE TO AN INTERIOR ROOM ON THE LOWEST
FLOOR.

A TORNADO WATCH IS IN EFFECT. SEVERE THUNDERSTORMS CAN PRODUCE
TORNADOES WITH LITTLE OR NO WARNING.

LAT...LON 2876 8094 2782 8084 2783 8041 2877 8055

\$\$

28

Microburst - A small, concentrated downburst affecting an area less than 4 kilometers (about 2.5 miles) across. Most microbursts are rather short-lived (5 minutes or so), but on rare occasions they have been known to last up to 6 times that long.