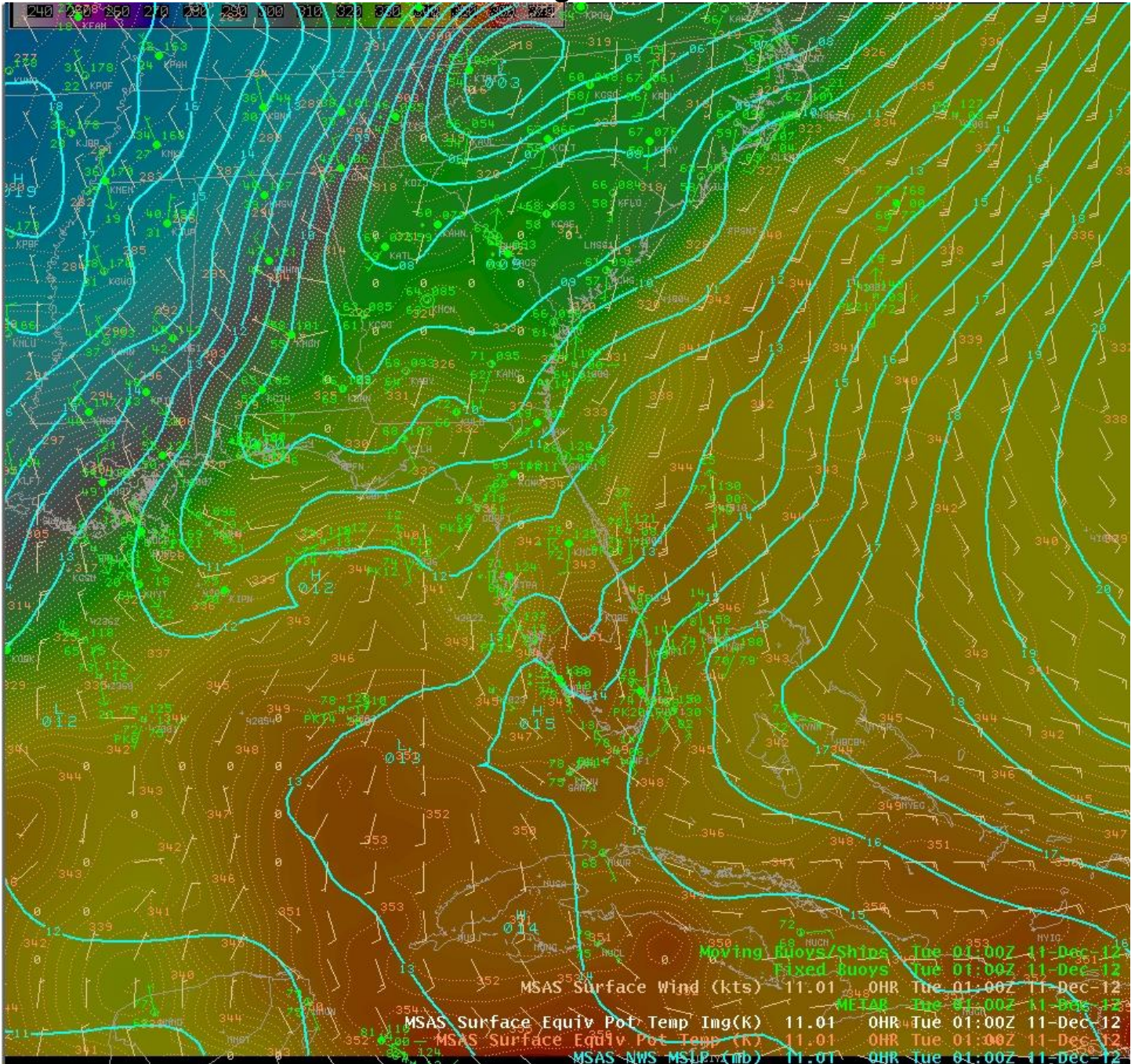


# Edgewater Tornado

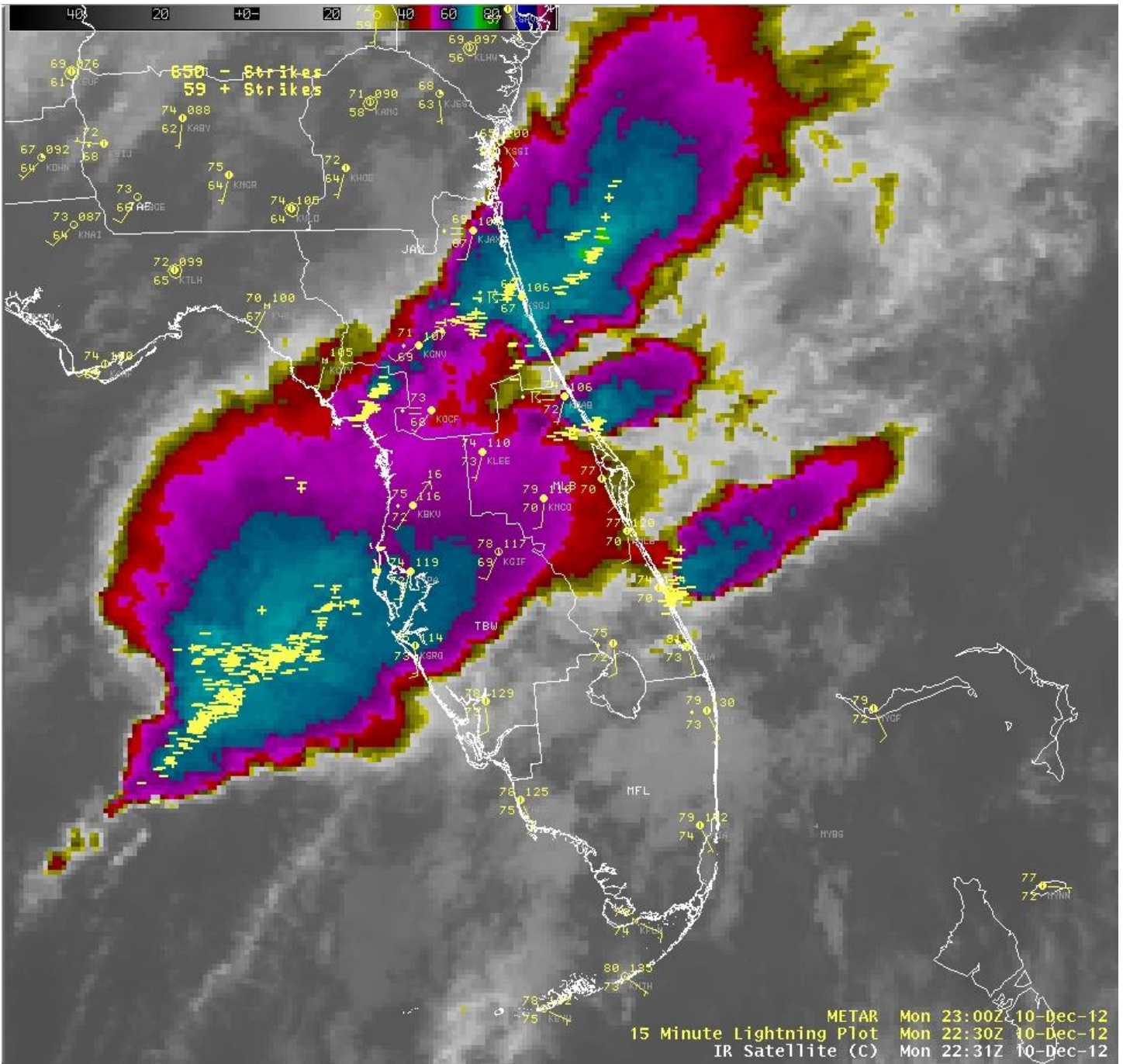
December 10, 2012

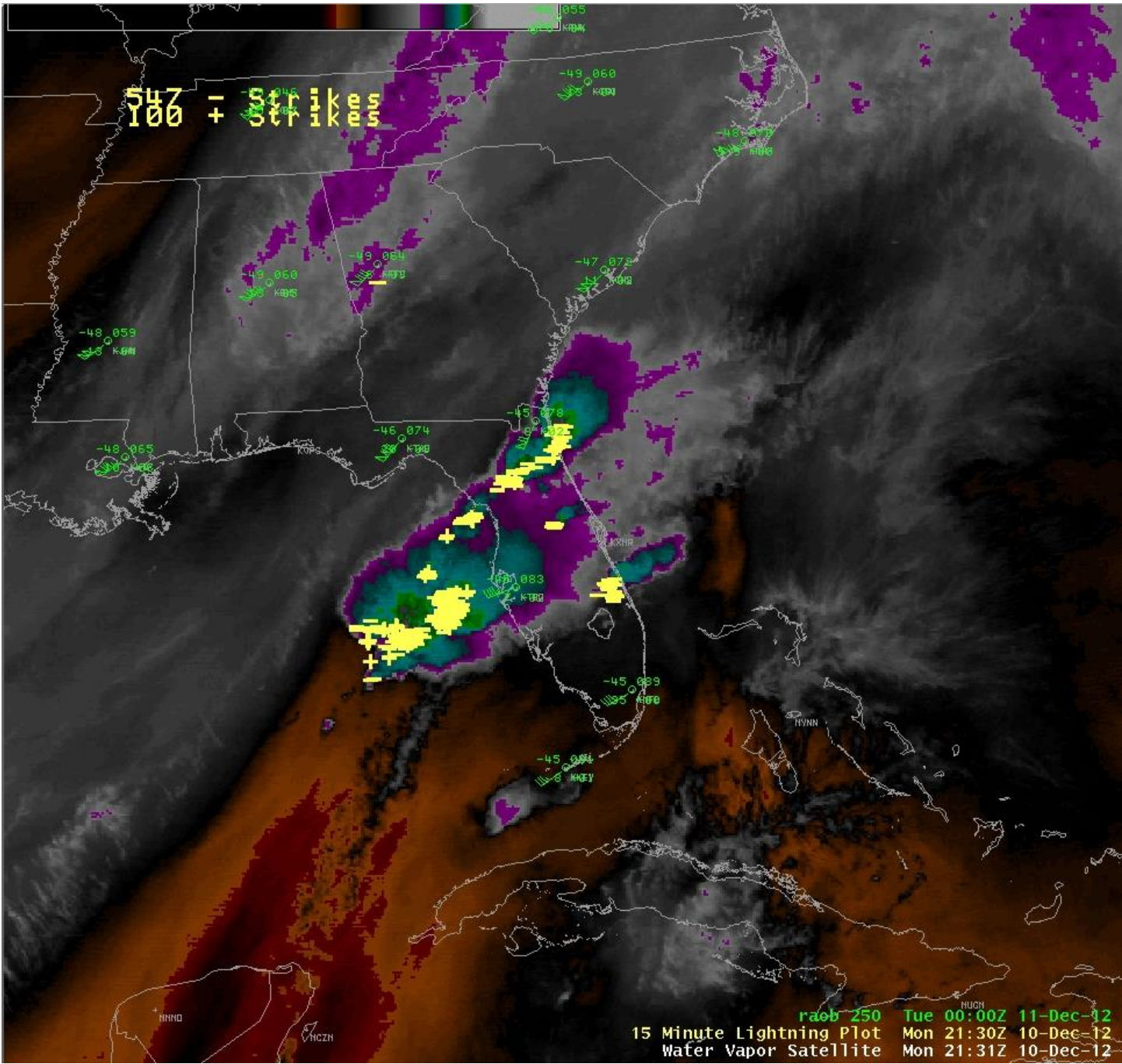
An unseasonably warm and humid air mass, combined with a strengthening low level veering wind field in the warm sector allowed rotating storms to develop in the afternoon hours of December 10th, 2012 across east central Florida. Tornado warnings were issued for rotating storms along the Treasure coast, metro Orlando and Volusia county. Two tornado touchdowns have been confirmed including a tornado that struck Edgewater, FL in southeast Volusia county. This tornado was rated an EF1 with estimated peak winds of 90 to 110 mph. A second tornadic waterspout was confirmed near Lake Apopka.

## Severe Storms Breaking out in the Warm Sector



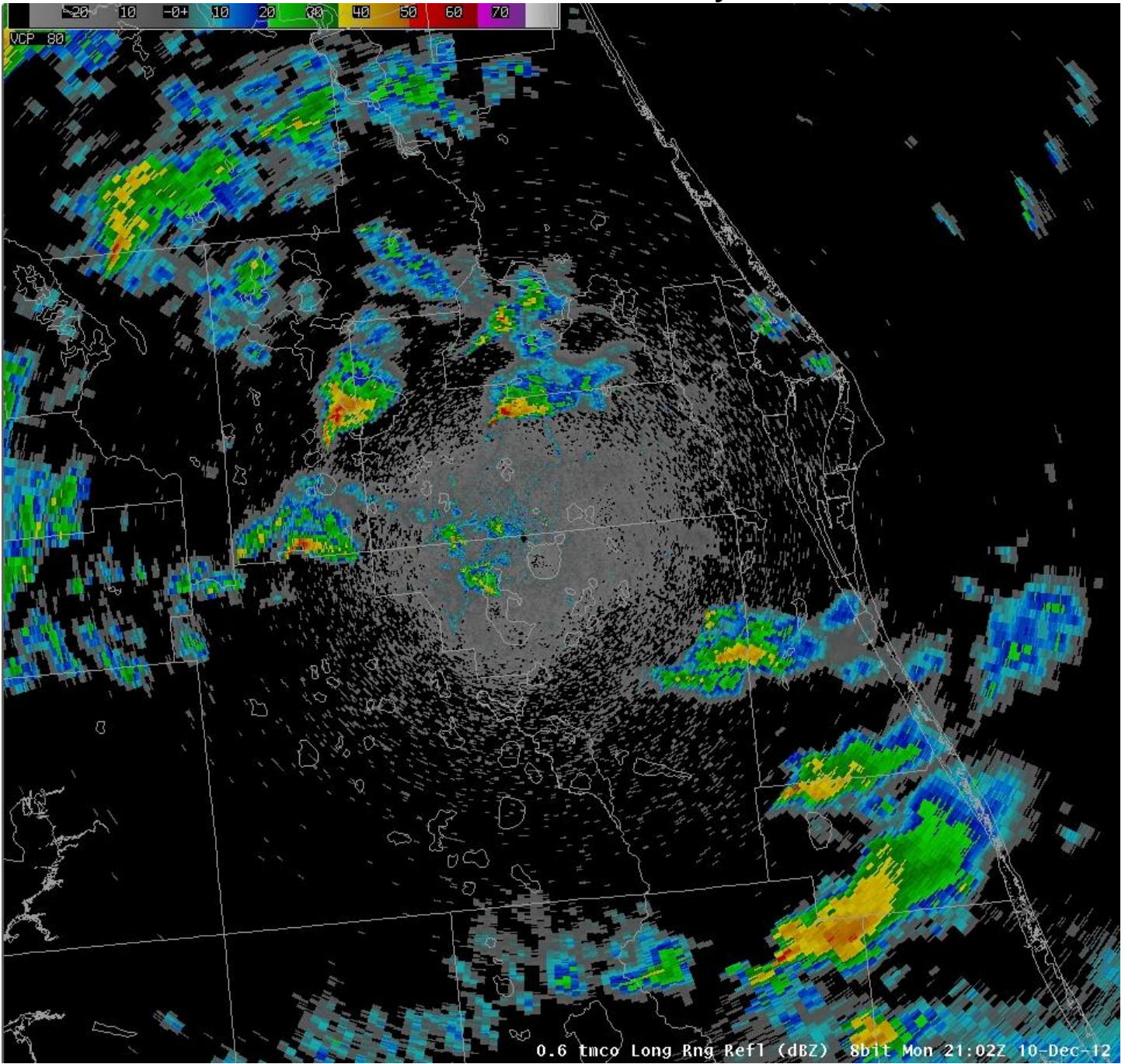






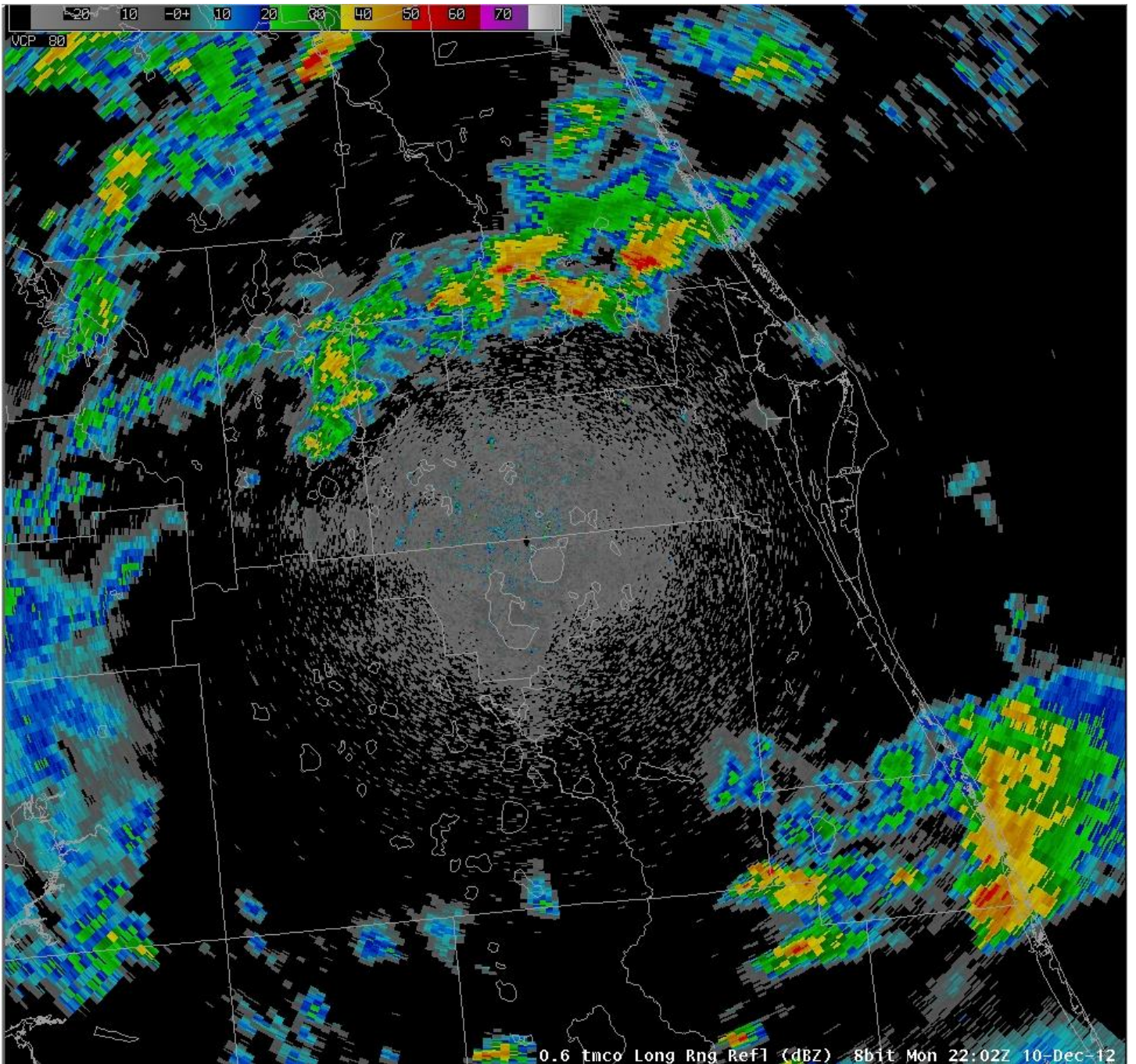


**Rotating storms track across Lake Apopka area and from southeast Seminole to southern Volusia county**



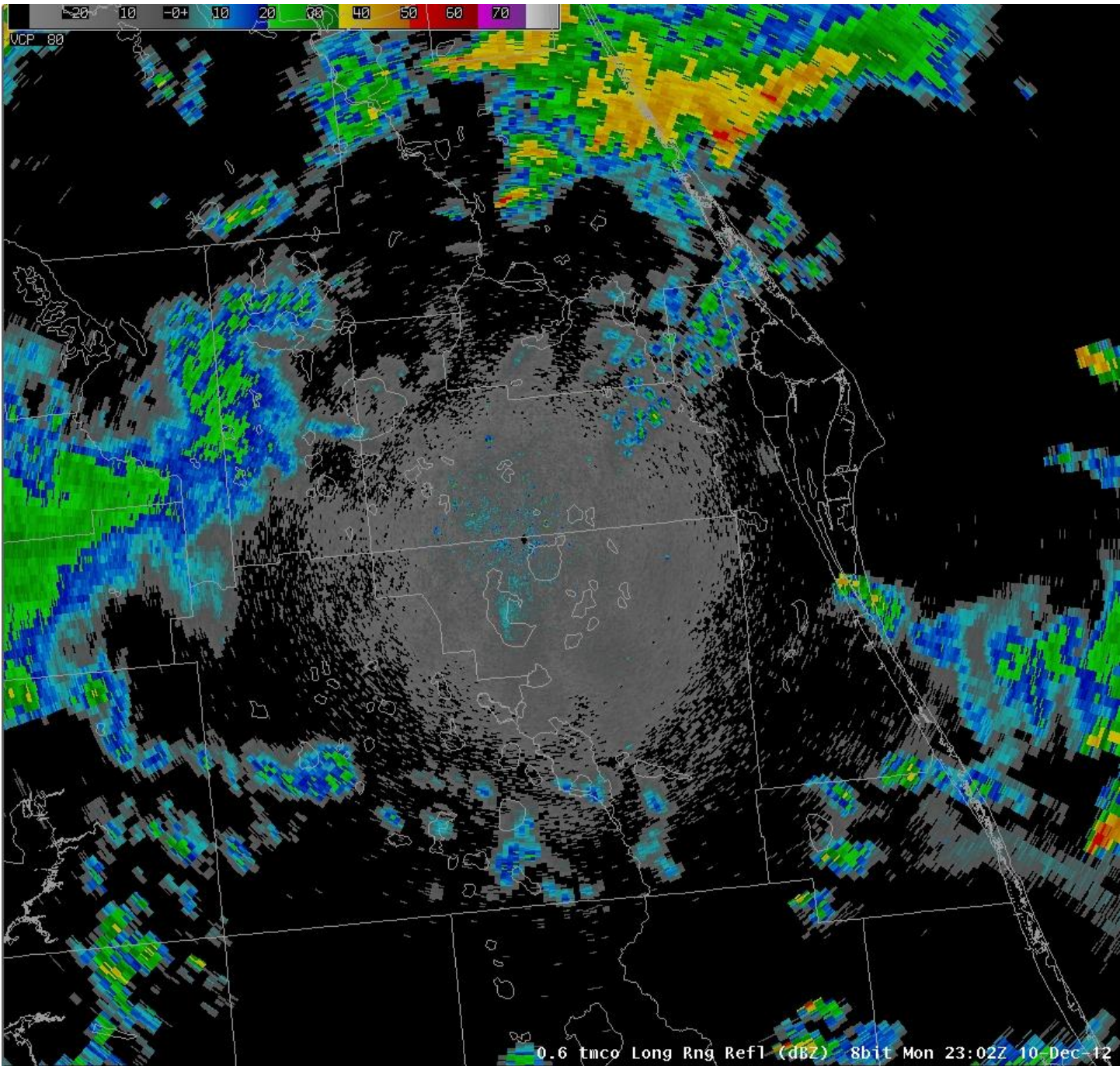
**402 PM TMCO - 0.6 deg Reflectivity**





502 PM TMCO - 0.6 deg Reflectivity

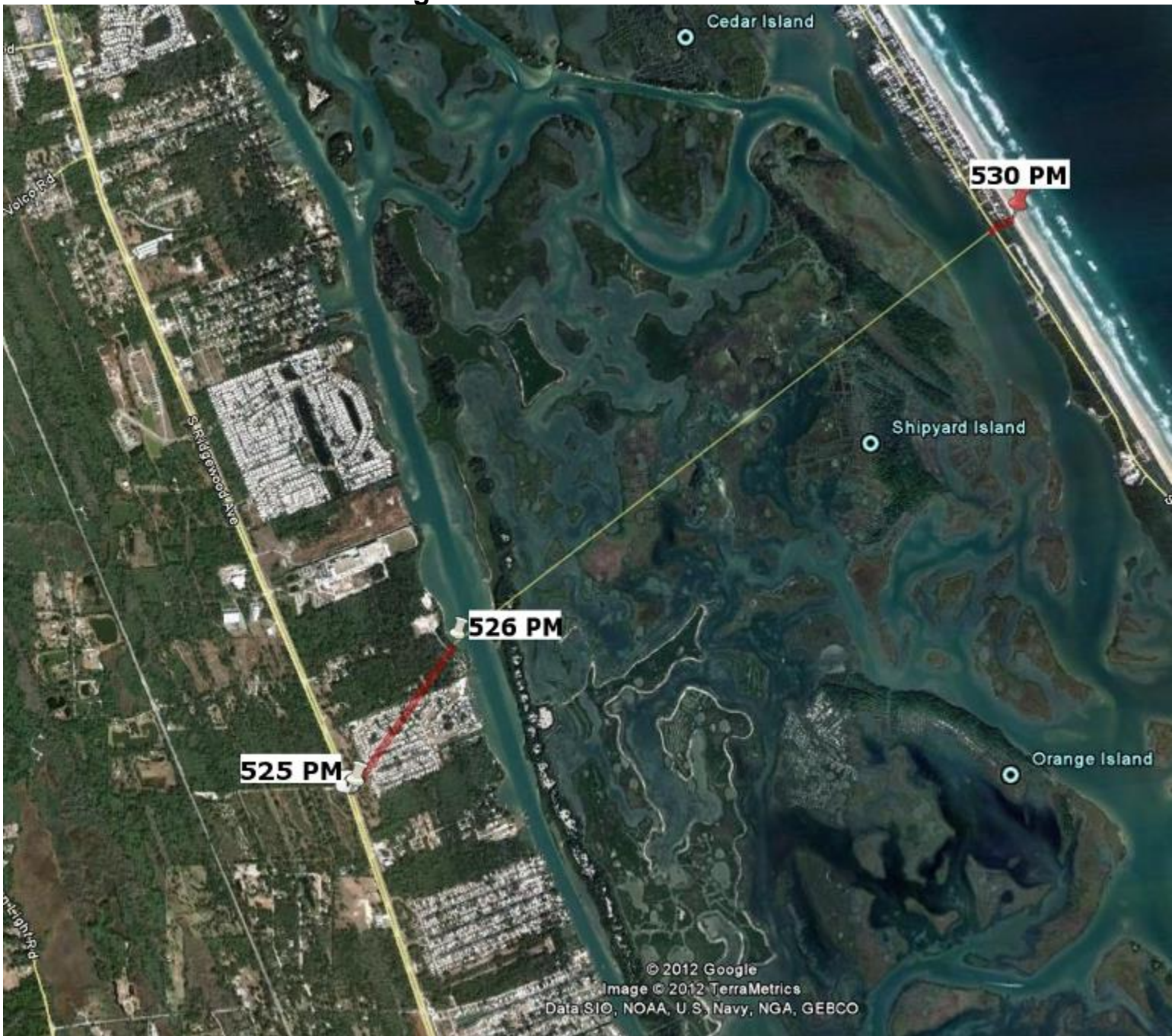




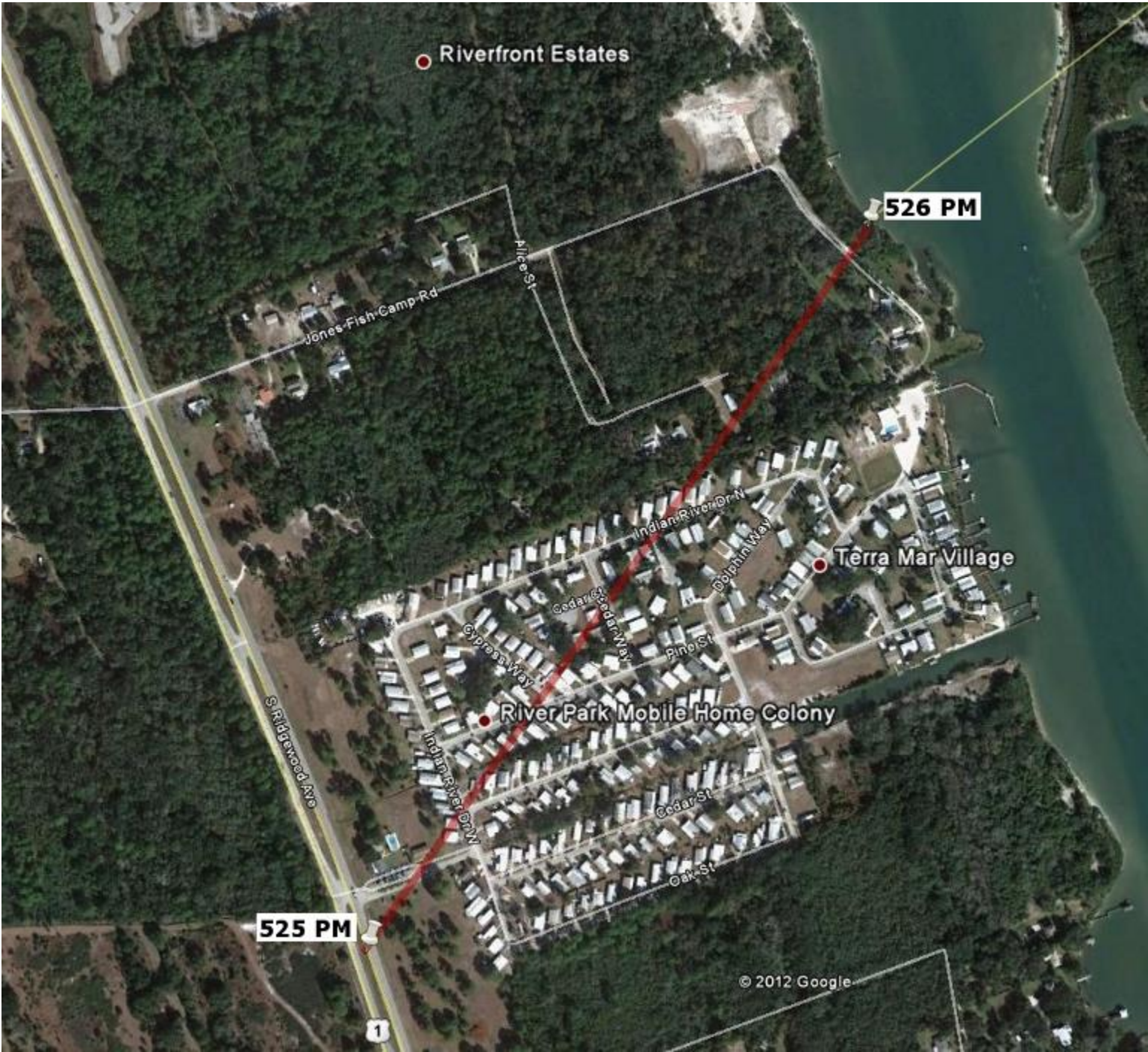
602 PM TMCO - 0.6 deg Reflectivity



# Edgewater Tornado Track









## Pictures from the Edgewater Tornado Survey







PUBLIC INFORMATION STATEMENT  
NATIONAL WEATHER SERVICE MELBOURNE FL  
657 PM EST THU DEC 13 2012

...NWS DAMAGE SURVEY FOR 12/10/12 TORNADO EVENT - UPDATE 1...

.UPDATE...SLIGHTLY MODIFIED TIME OF EDGEWATER TORNADO AND ADDED BETHUNE  
BEACH TORNADO.

.EDGEWATER TORNADO...

RATING: EF-1  
ESTIMATED PEAK WIND: 90-110 MPH  
PATH LENGTH /STATUTE/: 0.6 MILES  
PATH WIDTH /MAXIMUM/: 150 YARDS  
FATALITIES: 0  
INJURIES: 2

START DATE: DEC 10 2012



START TIME: 525 PM EST  
START LOCATION: 4 SSE EDGEWATER / VOLUSIA / FL  
START LAT/LON: 28.9112 / -80.8675

END DATE: DEC 10 2012  
END TIME: 526 PM EST  
END LOCATION: 4 SE EDGEWATER / VOLUSIA / FL  
END LAT/LON: 28.9185 / -80.8618

SURVEY SUMMARY: THE TORNADO BEGAN IN EDGEWATER AT US HIGHWAY ONE AND CONTINUED NORTHEAST THROUGH THE TERRA MAR VILLAGE MOBILE HOME PARK TO ALICE STREET AND JONES FISH CAMP ROAD...THEN MOVED OVER THE INTRACOASTAL RIVER AS A WATERSPOUT. A TOTAL OF 62 HOMES WERE DAMAGED /17 WITH MINOR DAMAGE AND 45 WITH MAJOR DAMAGE/...IMPACTING CARPORTS...AWNINGS... ROOFS...POWER POLES AND LINES...AND NUMEROUS TREES. OVER 100 TREES /MANY VERY LARGE/ BETWEEN THE MOBILE HOME PARK AND THE INTRACOASTAL RIVER WERE SNAPPED NEAR GROUND LEVEL OR UPROOTED. METAL FROM MOBILE HOMES WERE CARRIED FAR DOWNSTREAM. THE FRAME OF A MOBILE HOME WAS WRAPPED SEVERAL TIMES AROUND THE BASE OF A TREE. THE TORNADO PRODUCED HIGH-END EF0 DAMAGE WITHIN THE MOBILE HOME PARK...THEN STRENGTHENED TO A HIGH-END EF1 TORNADO WITH A WIDENING DAMAGE SWATH ALONG JONES FISH CAMP ROAD AND UPON APPROACH TO THE INTRACOASTAL WATERWAY. THERE WERE TWO VERY MINOR INJURIES...WITH BOTH INDIVIDUALS TREATED AT THE SCENE. MAXIMUM WINDS WERE ESTIMATED AT 90-110 MPH. A MOTORIST TRAVELLING ON US HIGHWAY ONE VIDEOTAPED THE TORNADO CROSSING THE HIGHWAY IN FRONT OF HIM...WITH DEBRIS EVIDENT WITHIN THE CIRCULATION AS IT REACHED THE MOBILE HOME PARK. SEVERAL OTHER CITIZENS AND A PUBLIC SAFETY OFFICIAL ALSO WITNESSED THE TORNADO.

VOLUSIA COUNTY EMERGENCY MANAGEMENT ASSISTED WITH THE DAMAGE SURVEY.

.BETHUNE BEACH TORNADO...

RATING: EF-0  
ESTIMATED PEAK WIND: 55-65 MPH  
PATH LENGTH /STATUTE/: 0.1 MILES  
PATH WIDTH /MAXIMUM/: 20 YARDS  
FATALITIES: 0  
INJURIES: 0

START DATE: DEC 10 2012  
START TIME: 529 PM EST  
START LOCATION: 5 ESE EDGEWATER / VOLUSIA / FL  
START LAT/LON: 28.9386 / -80.832

END DATE: DEC 10 21012  
END TIME: 530 PM EST  
END LOCATION: 5 ESE EDGEWATER / VOLUSIA / FL  
END LAT/LON: 28.9393 / -80.8307

SURVEY SUMMARY: THE TORNADO WHICH IMPACTED EDGEWATER FROM 525-526 PM EST CONTINUED NORTHEAST ACROSS THE INTRACOASTAL RIVER...THEN MOVED ACROSS



THE NARROW BARRIER ISLAND AT BETHUNE BEACH AS A SMALL...WEAK EFO  
TORNADO. SEVERAL POWER LINES WERE DOWNED BY THE TORNADO ALONG HIGHWAY  
A1A AND SMALL DEBRIS FROM PALM TREES AND SHRUBS WERE OBSERVED ALONG THE  
PATH. MAXIMUM WINDS WERE ESTIMATED AT 55-65 MPH. A HIGHWAY A1A RESIDENT  
ALSO OBSERVED THE CIRCULATION PASSING JUST TO HIS SOUTH AT 530 PM...  
WITH VERY MINOR WIND DAMAGE NOTED.

NOTE: IN BETWEEN THE TIME OF THE TORNADO IMPACTING EDGEWATER AND BETHUNE  
BEACH...THE CIRCULATION MOVED ACROSS THE INTRACOASTAL RIVER AND  
ASSOCIATED MARSH ISLANDS AS A WATERSPOUT FROM 526 TO 529 PM EST. A  
CITIZEN VIDEOTAPED THE LARGE WATERSPOUT AS IT ADVANCED OVER THE RIVER...  
FARTHER AWAY FROM HIS VANTAGE POINT LESS THAN A MILE TO THE NORTHWEST.

EF SCALE: THE ENHANCED FUJITA SCALE CLASSIFIES TORNADOES INTO THE  
FOLLOWING CATEGORIES.

EF0...WEAK.....65 TO 85 MPH  
EF1...WEAK.....86 TO 110 MPH  
EF2...STRONG....111 TO 135 MPH  
EF3...STRONG....136 TO 165 MPH  
EF4...VIOLENT...166 TO 200 MPH  
EF5...VIOLENT...>200 MPH

NOTE:  
THE INFORMATION IN THIS STATEMENT IS PRELIMINARY AND SUBJECT TO  
CHANGE PENDING FINAL REVIEW OF THE EVENTS AND PUBLICATION IN NWS  
STORM DATA.

\$\$

SPRATT

PRELIMINARY LOCAL STORM REPORT...CORRECTED TYPO  
NATIONAL WEATHER SERVICE MELBOURNE FL  
620 PM EST THU DEC 13 2012

..TIME... ..EVENT... ..CITY LOCATION... ..LAT.LON...  
..DATE... ..MAG.... ..COUNTY LOCATION..ST.. ..SOURCE....  
..REMARKS..

0426 PM WATER SPOUT 5 E FERNDALE 28.63N 81.62W  
12/10/2012 ORANGE FL PUBLIC

A CITIZEN VIDEOTAPED A WATERSPOUT OVER LAKE APOPKA FOR  
SEVERAL MINUTES AS IT MOVED NORTHEAST FROM NEAR THE  
CENTER OF LAKE APOPKA TOWARD THE NORTHEAST SHORE. A SHORT  
TIME LATER...SEVERAL CITIZENS LOCATED A FEW MILES  
NORTHEAST OF THE LAKE OBSERVED THE WATERSPOUT MOVE  
ONSHORE AND TRACK ACROSS THE RURAL LAKE APOPKA  
RESTORATION AREA BEFORE DISSIPATING. THE TORNADO WAS



ESTIMATED AS AN EF0 WITH A TRACK LENGTH 1.7 MILES AND A  
MAXIMUM WIDTH OF 50 YARDS...OCCURRING FROM 431-434 PM.

0525 PM WATER SPOUT 4 SE EDGEWATER 28.92N 80.86W  
12/10/2012 VOLUSIA FL PUBLIC

THE TORNADO WHICH IMPACTED EDGEWATER FROM 525 TO 526 PM  
EST CONTINUED NORTHEAST AS A WATERSPOUT AND CROSSED THE  
INTRACOASTAL RIVER AND ASSOCIATED MARSH ISLANDS. A  
CITIZEN VIDEOTAPED THE LARGE WATESPOUT AS IT ADVANCED  
OVER THE RIVER...FARTHER AWAY FROM HIS VANTAGE POINT  
LESS THAN A MILE TO THE NORTHWEST. THE WATERSPOUT THEN  
MOVED ONSHORE THE BARRIER ISLAND AT BETHUNE BEACH AT 529  
PM EST.

&&

\$\$

SPRATT