

The Wabasso Tornado - December 13, 2002

At 11:55 AM, a tornado formed in Wabasso, Florida, traveling approximately 1.5 miles, roughly following highway 510. First indications of the tornado were found at the southern end of 64th Court, and a path was surveyed through the intersection of highway 510 and 513 to US-1 east of 55th avenue, between 87th Street and highway 510.

The path was about 50 yards wide at most, and often far less wide.

Preliminary tornado intensity assigned was F1 on the [Fujita Tornado Intensity Scale](#).

There was one minor injury reported.

The area had been under a Tornado Watch since early morning. After an active weather morning, with several warnings issued for other nearby counties, residents said they were aware that this would be a day with potential for severe weather. A severe thunderstorm warning was issued for southeast Brevard County and eastern Indian River County at 11:31 am, in effect until 12:30 pm. The warning stressed that a tornado could develop with little or no warning in the area.

The area affected, and approximate path determined by survey team:



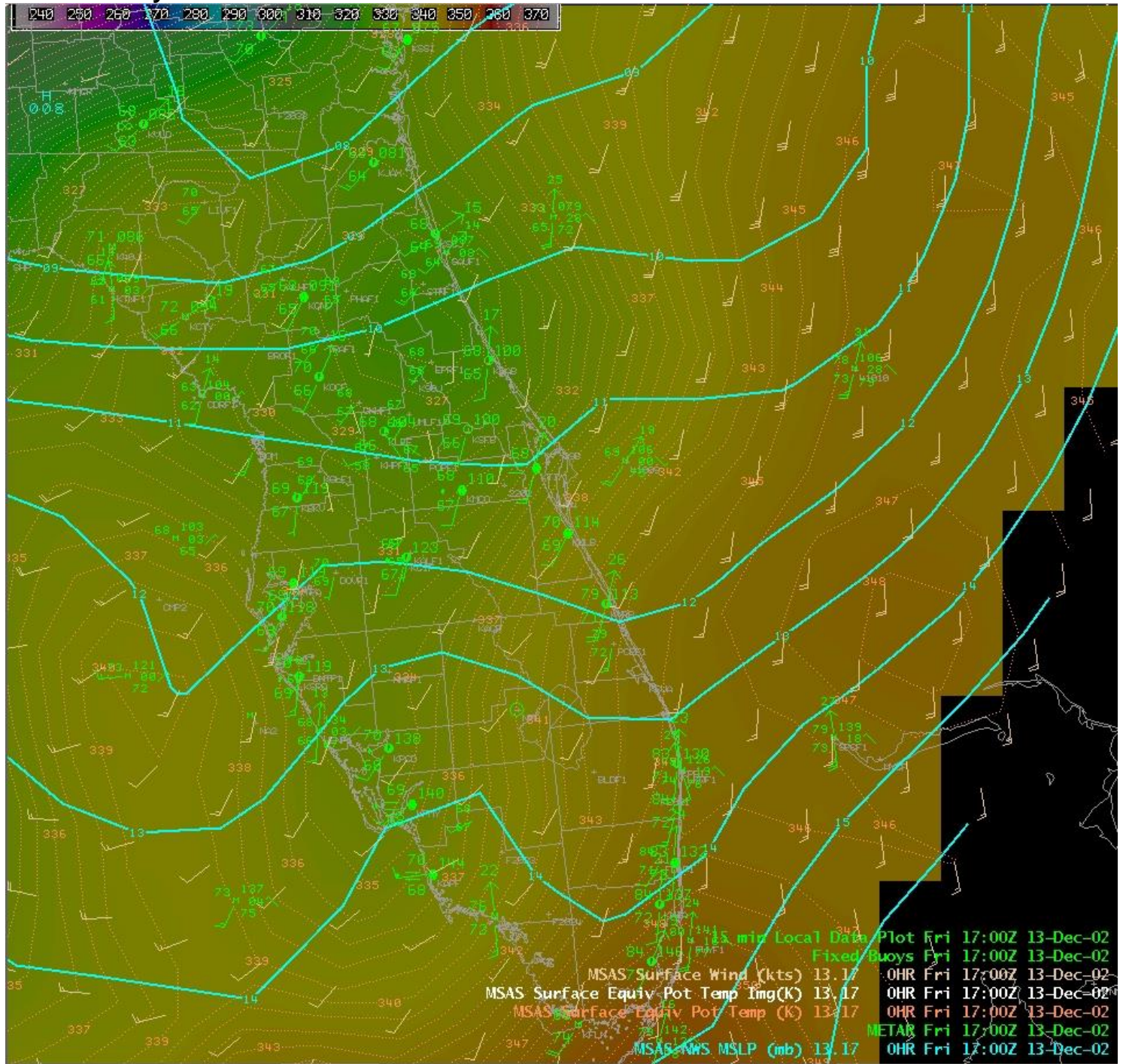
Damage Photos:



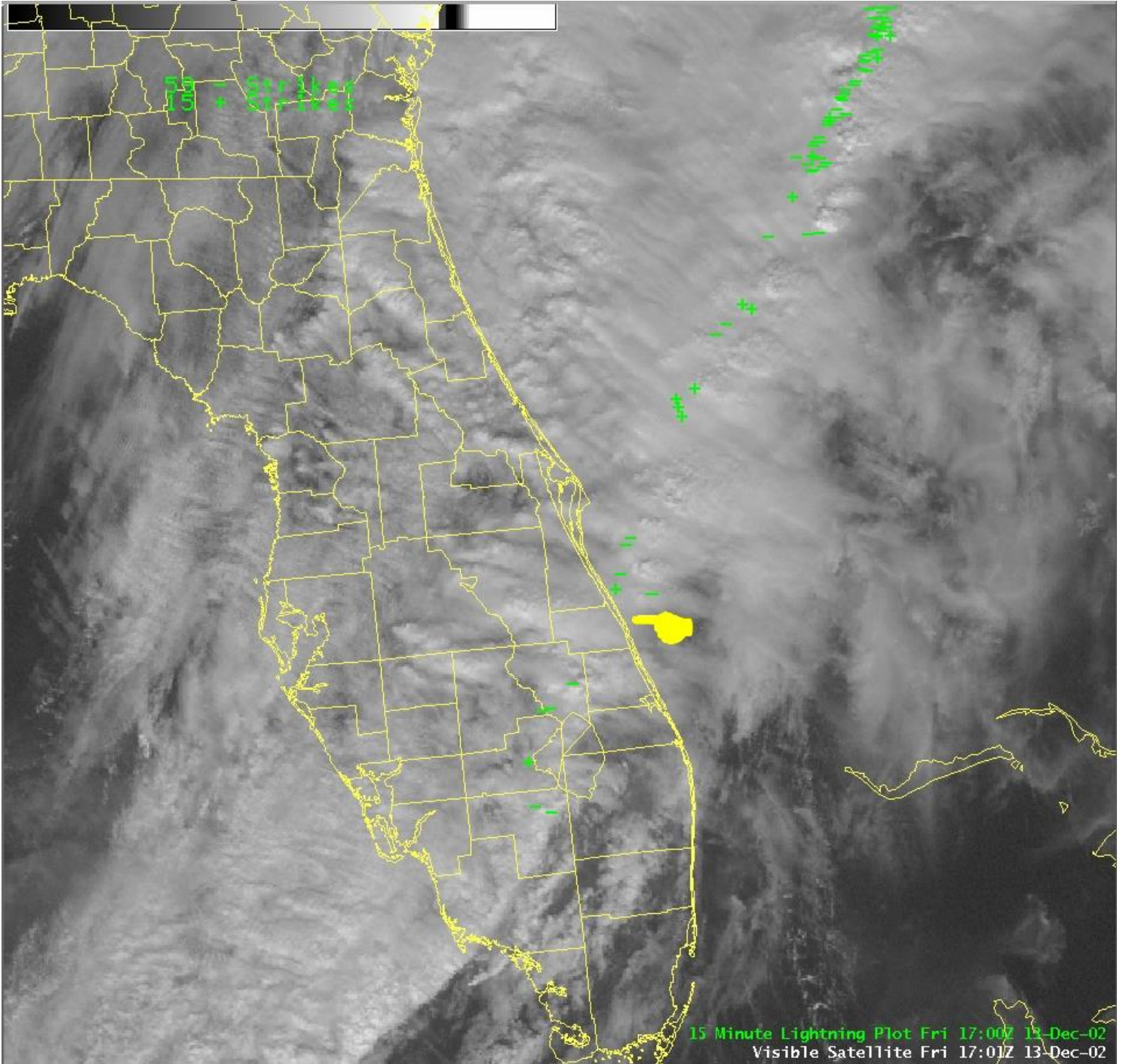




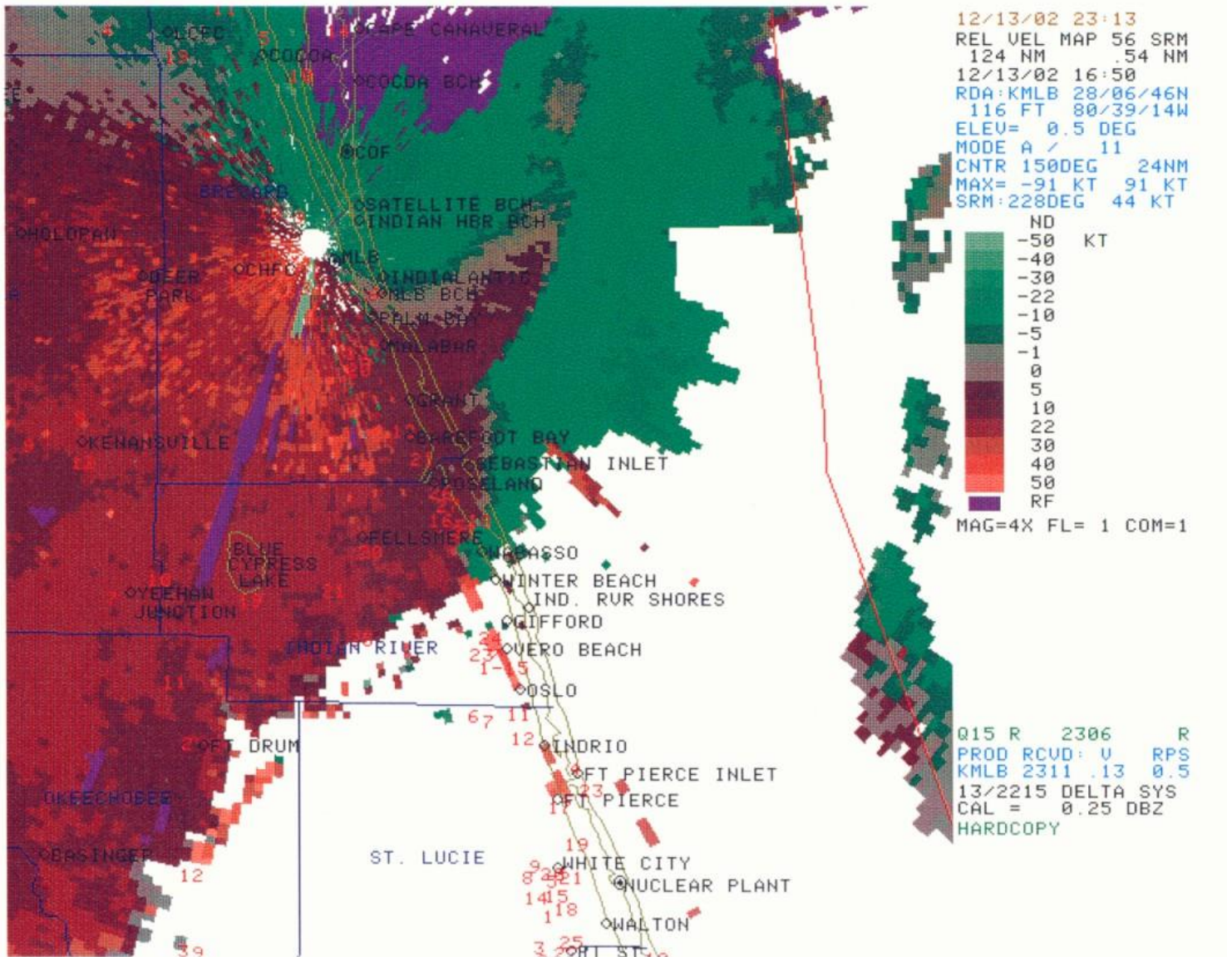
Surface Analysis:



Visible Satellite Image:



Radar Velocity Image:



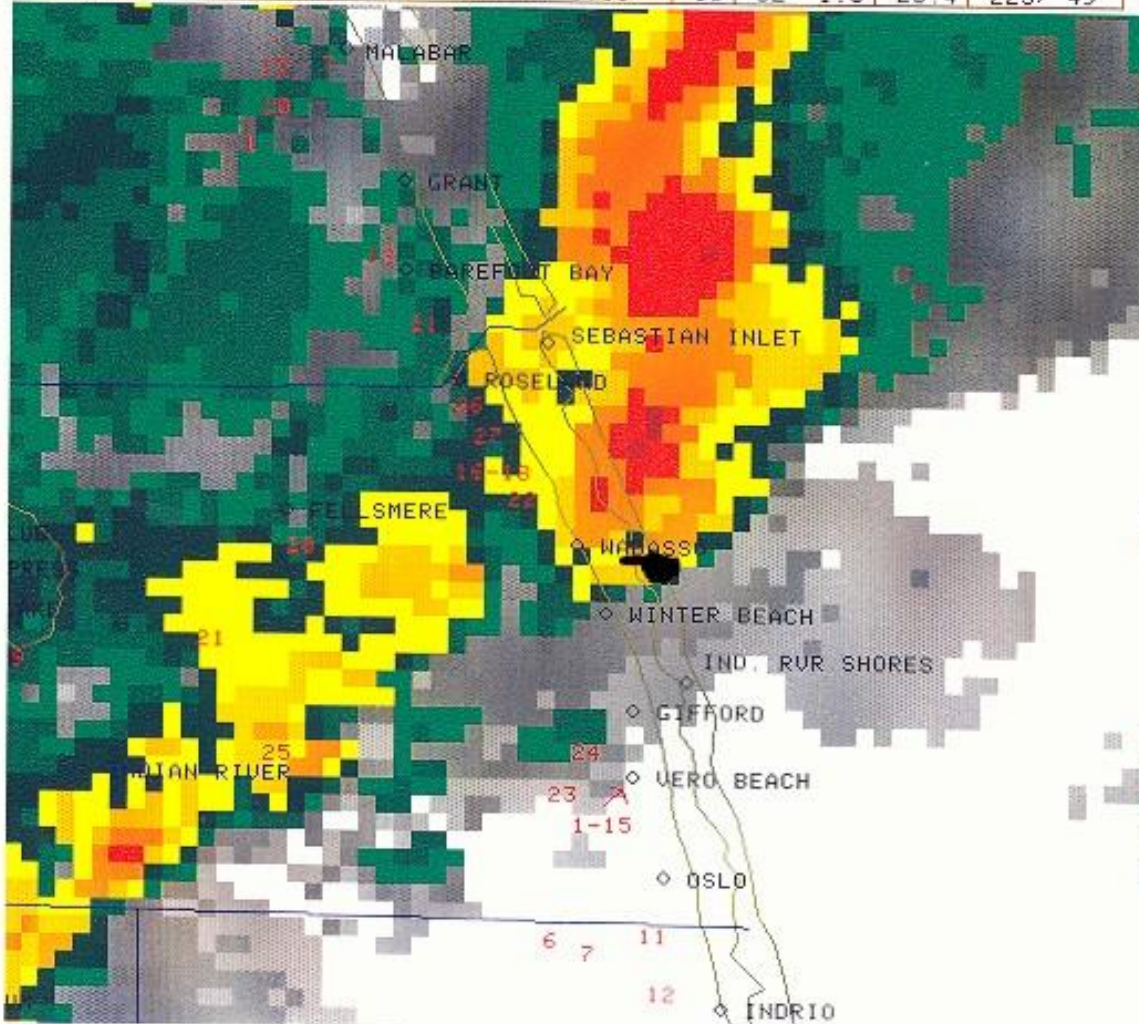
Radar Reflectivity Image:

STM ID	AZ/RAN	TUS	MESO	POSH/POH/MX SIZE	VIL	DBZM	HT	TOP	FCST	MUMT
T0	97/ 17	NONE	NONE	0/ 20/<0.50	18	53	8.4	21.2	227/ 45	
R9	197/ 55	NONE	NONE	0/ 10/<0.50	17	52	15.7	21.3	242/ 37	
I5	131/ 20	NONE	NONE	0/ 0/ 0.00	16	53	7.2	20.9	231/ 50	
I7	61/ 25	NONE	NONE	0/ 0/ 0.00	16	52	1.5	23.4	223/ 49	

12/13/02 23:10
 CMP REF 37 CR
 124 NM .54 NM RES
 12/13/02 16:55
 RDA-KMLB 28/06/46N
 116 FT 00/39/14W
 MODE A / 11
 CNTR 151DEG 24NM
 MAX= 57 DBZ

ND DBZ
 5
 10
 15
 20
 25
 30
 35
 40
 45
 50
 55
 60
 65
 70
 75
 MAG=8X FL= 1 COM=1
 OUL: M TU AT

A/R (RDA)
 Q15 U 2306 R
 PROD RCVD: SRM RPS
 KMLB 2306 6.2
 13/2215 DELTA SYS
 CAL = 0.25 DBZ
 HARDCOPY



Products issued:

WUUS2 KMLB 131635
 SVRMLB
 FLC009-061-131730-

BULLETIN - EAS ACTIVATION REQUESTED
 SEVERE THUNDERSTORM WARNING
 NATIONAL WEATHER SERVICE MELBOURNE FL
 1131 AM EST FRI DEC 13 2002

THE NATIONAL WEATHER SERVICE IN MELBOURNE HAS ISSUED A

* SEVERE THUNDERSTORM WARNING FOR...
 SOUTHEASTERN BREVARD COUNTY
 INDIAN RIVER COUNTY

IN EAST CENTRAL FLORIDA

* UNTIL 1230 PM EST

* AT 1130 AM EST...NATIONAL WEATHER SERVICE DOPPLER RADAR INDICATED A LINE OF SEVERE THUNDERSTORMS REACHING OVER EXTREME SOUTHERN BREVARD COUNTY OVER MALABAR AND INTO INDIAN RIVER COUNTY NEAR BLUE CYPRESS LAKE. THE STORMS WERE MOVING QUICKLY NORTHEAST AT 40 MPH.

* THE STORMS WILL CROSS THE COAST FROM MELBOURNE BEACH SOUTH TO SEBASTIAN AND VERO BEACH. PERSONS SHOULD TAKE COVER FROM THESE STORMS IMMEDIATELY.

A TORNADO WATCH IS ALSO IN EFFECT FOR THE WARNED AREA. SEVERE THUNDERSTORMS CAN PRODUCE TORNADOES WITH LITTLE OR NO WARNING. GO TO A SAFE PLACE IF SEVERE THUNDERSTORMS APPROACH YOUR AREA...ESPECIALLY IF YOU LIVE IN A MOBILE HOME.

REPORT LARGE HAIL...DIME SIZE OR LARGER...OR SIGNIFICANT WIND DAMAGE TO LOCAL LAW ENFORCEMENT FOR IMMEDIATE RELAY TO THE NATIONAL WEATHER SERVICE.

\$\$

LAT...LON 2801 8069 2764 8055 2761 8016 2844 8028

52