

Christmas Day Tornadoes
December 25, 2006

Synopsis:

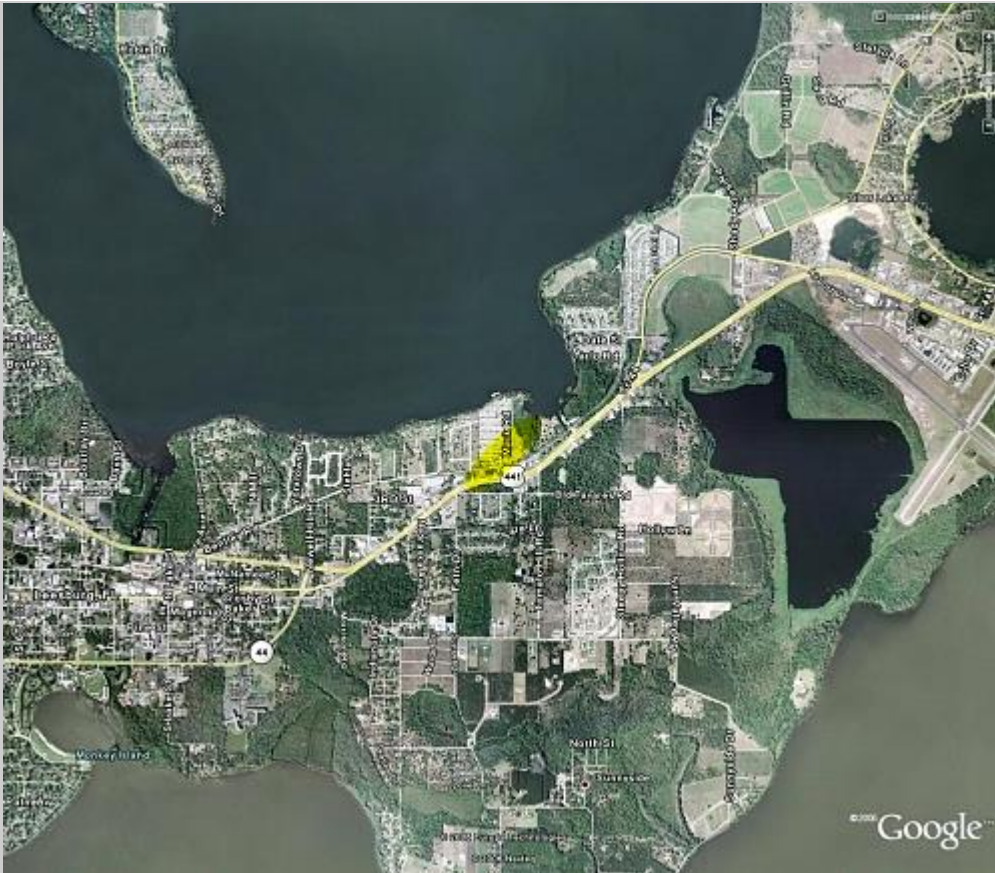
On Sunday, December 24th, an area of low pressure developed in the Gulf of Mexico as a result of a strong upper level trough which moved across the southern tier of the United States, embedded within the powerful subtropical branch of the jet stream. As this low pressure system moved northeastward into the southeastern United States Christmas Eve into Christmas morning, a squall line developed over the eastern Gulf of Mexico and then moved rapidly eastward into Florida . The squall line spawned severe thunderstorms and tornadoes across northern and western portions of the state during the late night and early morning hours, and this activity moved rapidly toward the east and northeast at around 50 MPH across east central Florida by Christmas afternoon.

The squall line spawned a tornado rated at F-0 on the Fujita scale in the Leesburg area in Lake County with estimated wind speeds of about 70 MPH. The tornado was about 50 yards wide and about one quarter mile long and it struck the Brittany Estates just north of Highway 441. A tornado warning was issued at 11:58 AM , 22 minutes in advance of tornado touchdown at 12:20 PM . A number of manufactured homes suffered damage to roofs awnings and carports, but fortunately, no injuries were reported from this tornado. As the individual storm that spawned this tornado moved northeastward and weakened, a second cell developed just to its south and moved toward DeLand in western Volusia County . A second tornado warning was issued at 12:39 PM , a full 51 minutes in advance of the tornado touchdown near DeLand around 1:30 PM . The DeLand tornado was determined to have done F-2 damage with estimated wind speeds between 120 and 150 MPH. There was considerable damage done to two mobile home parks, and 10 persons were injured, 2 seriously.

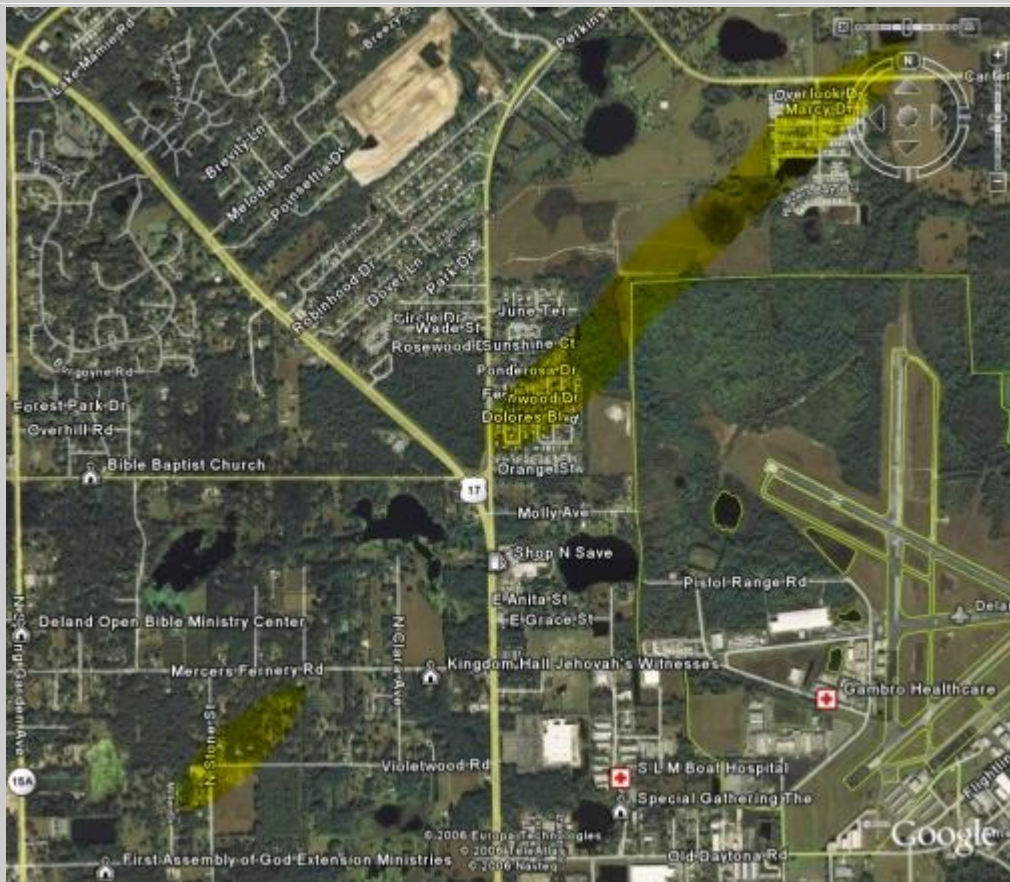
This same storm moved rapidly east-northeastward at 50 MPH, causing damage in the Tiger Bay area of central Volusia County . A second tornado warning was issued for Eastern Volusia County at 1:25 PM , highlighting the potential for a tornado touching down in or around the Daytona Beach area. Beginning around 1:45 , significant damage occurred near the Daytona Beach International Airport at Embry Riddle Aeronautical University , and at the Sutton Place Apartments. This tornado was rated at F-2 with estimated wind speeds of around 120 MPH. There were six people injured by this tornado.

Miraculously, there was no loss of life from any of the three tornadoes.

At the time of this preliminary survey, damage was estimated at \$30M in Daytona Beach, and at \$2.5M in DeLand.



Leesburg Area Tornado Track (above)
Map shows approximate track as surveyed by NWS team.

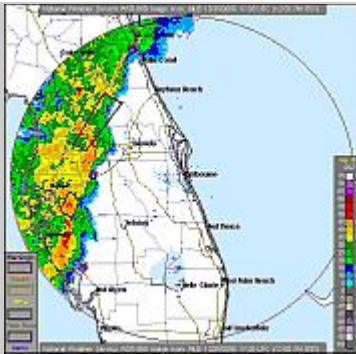


Deland Area Tornado Track (above)
Map shows approximate track as surveyed by NWS team.



Daytona Beach Area Tornado Track (above)
 Map shows approximate track as surveyed by NWS team.

Meteorological Imagery:



[Radar Loop](#)

Products Issued:

HAZARDOUS WEATHER OUTLOOK
NATIONAL WEATHER SERVICE MELBOURNE FL
530 AM EST WED DEC 20 2006

AMZ550-555-570-575-FLZ041-044>047-053-054-058-059-064-141-144-147-
211030-
COASTAL VOLUSIA-COCOA BEACH TO JUPITER INLET 20 NM TO 60 NM
OFFSHORE-
COCOA BEACH TO JUPITER INLET OUT TO 20 NM-
FLAGLER BEACH TO COCOA BEACH 20 NM TO 60 NM OFFSHORE-
FLAGLER BEACH TO COCOA BEACH OUT TO 20 NM-INDIAN RIVER-
INLAND VOLUSIA-MARTIN-NORTHERN BREVARD-NORTHERN LAKE-
OKEECHOBEE-
ORANGE-OSCEOLA-SEMINOLE-SOUTHERN BREVARD-SOUTHERN LAKE-ST.
LUCIE-
530 AM EST WED DEC 20 2006

THIS HAZARDOUS WEATHER OUTLOOK IS FOR EAST CENTRAL FLORIDA.

.DAY ONE...TONIGHT.

...RIP CURRENT IMPACT...
AN INCREASING SWELL COMBINED WITH THE TIDAL EFFECTS OF A NEW MOON
WILL PRODUCE AN ELEVATED THREAT FOR RIP CURRENTS. REMEMBER TO
ALWAYS
SWIM WITHIN SIGHT OF A LIFEGUARD.

...WIND AND SEA IMPACT...
HAZARDOUS BOATING CONDITIONS WILL DEVELOP THIS MORNING AS WINDS
INCREASE TO AROUND 20 KNOTS OFFSHORE AND 15 TO 20 KNOTS
NEARSHORE.
ALTHOUGH WINDS MAY SUBSIDE SOMEWHAT AFTER MIDNIGHT...SEAS
WILL CONTINUE TO BUILD TO 5 TO 7 FEET NEARSHORE AND 6 TO 8 FEET
OFFSHORE.

.DAYS TWO THROUGH SEVEN...THURSDAY THROUGH TUESDAY.
BOATING CONDITIONS WILL GENERALLY REMAIN HAZARDOUS THROUGH
MUCH OF
THE WEEK. THE THREAT FOR STRONG STORMS WILL INCREASE THIS
WEEKEND
AND PARTICULARLY EARLY NEXT WEEK AS AN AREA OF LOW PRESSURE
DEVELOPS
IN THE GULF OF MEXICO.

.SPOTTER INFORMATION STATEMENT...

SPOTTER ACTIVATION WILL NOT BE NEEDED TODAY.

HAZARDOUS WEATHER OUTLOOK
NATIONAL WEATHER SERVICE MELBOURNE FL
720 PM EST WED DEC 20 2006

AMZ550-555-570-575-FLZ041-044>047-053-054-058-059-064-141-144-147-
211030-

COASTAL WATERS FROM FLAGLER BEACH TO COCOA BEACH OUT 20 NM-
COASTAL WATERS FROM COCOA BEACH TO JUPITER INLET OUT 20 NM-
WATERS FROM FLAGLER BEACH TO COCOA BEACH 20 TO 60 NM OFFSHORE-
WATERS FROM COCOA BEACH TO JUPITER INLET 20 TO 60 NM OFFSHORE-
INLAND VOLUSIA-NORTHERN LAKE-ORANGE-SEMINOLE-SOUTHERN BREVARD-
OSCEOLA-INDIAN RIVER-OKEECHOBEE-ST. LUCIE-MARTIN-COASTAL VOLUSIA-
SOUTHERN LAKE-NORTHERN BREVARD-
720 PM EST WED DEC 20 2006

THIS HAZARDOUS WEATHER OUTLOOK IS FOR EAST CENTRAL FLORIDA.

.DAY ONE...TONIGHT.

...WIND AND SEA IMPACT...

HAZARDOUS BOATING CONDITIONS HAVE DEVELOPED WITH EAST WINDS OF
20
KNOTS AND GUSTY OFFSHORE...AND 15 TO 20 KNOTS NEARSHORE.
ALTHOUGH
WINDS MAY SUBSIDE SOMEWHAT AFTER MIDNIGHT...SEAS WILL REMAIN 5 TO
7 FEET NEARSHORE AND 6 TO 8 FEET OFFSHORE.

.DAYS TWO THROUGH SEVEN...THURSDAY THROUGH TUESDAY.
BOATING CONDITIONS WILL REMAIN HAZARDOUS THROUGH FRIDAY.
A COMPLEX WEATHER SYSTEM IS FORECAST TO APPROACH THE REGION THIS
WEEKEND AND EARLY NEXT WEEK PROVIDING INCREASING CHANCES FOR
RAIN
AND STORMS. THE EVOLUTION OF IMPORTANT WEATHER FEATURES...SUCH
AS
SURFACE LOW DEVELOPMENT AND TRACK...REMAIN UNCLEAR.
NONETHELESS...
CONFIDENCE IS INCREASING THAT EAST CENTRAL FLORIDA WILL SEE
SEVERAL ROUNDS OF PRECIPITATION THIS WEEKEND AND INTO EARLY NEXT
WEEK. THE STRONGEST AND MOST ORGANIZED OF THESE ROUNDS OF
CONVECTION APPEARS TO BE OVERNIGHT SUNDAY INTO EARLY
MONDAY...THAT
IS...LATE CHRISTMAS EVE INTO THE FIRST PART OF CHRISTMAS DAY.
SUBSEQUENT FORECASTS WILL GRADUALLY BE ABLE TO BETTER DEFINE THE
IMPACTS THIS WEATHER SYSTEM WILL HAVE ON EAST CENTRAL FLORIDA.

.SPOTTER INFORMATION STATEMENT...

SPOTTER ACTIVATION WILL NOT BE NEEDED TODAY.

\$\$

KELLY

HAZARDOUS WEATHER OUTLOOK
NATIONAL WEATHER SERVICE MELBOURNE FL
548 AM EST THU DEC 21 2006

AMZ550-555-570-575-FLZ041-044>047-053-054-058-059-064-141-144-147-
212300-
COASTAL WATERS FROM FLAGLER BEACH TO COCOA BEACH OUT 20 NM-
COASTAL WATERS FROM COCOA BEACH TO JUPITER INLET OUT 20 NM-
WATERS FROM FLAGLER BEACH TO COCOA BEACH 20 TO 60 NM OFFSHORE-
WATERS FROM COCOA BEACH TO JUPITER INLET 20 TO 60 NM OFFSHORE-
INLAND VOLUSIA-NORTHERN LAKE-ORANGE-SEMINOLE-SOUTHERN BREVARD-
OSCEOLA-INDIAN RIVER-OKEECHOBEE-ST. LUCIE-MARTIN-COASTAL VOLUSIA-
SOUTHERN LAKE-NORTHERN BREVARD-
548 AM EST THU DEC 21 2006

THIS HAZARDOUS WEATHER OUTLOOK IS FOR EAST CENTRAL FLORIDA.

.DAY ONE...TODAY AND TONIGHT.

...RIP CURRENT IMPACT...

A FOUR TO FIVE FOOT EASTERLY SWELL COMBINED WITH TIDAL EFFECTS
ASSOCIATED WITH A NEW MOON PHASE WILL PRODUCE A MODERATE THREAT
FOR RIP

CURRENTS TODAY. REMEMBER TO ALWAYS SWIM WITHIN SIGHT OF A
LIFEGUARD.

...WIND AND SEA IMPACT...

HAZARDOUS BOATING CONDITIONS WILL CONTINUE INTO FRIDAY. EAST TO
SOUTHEAST WINDS WILL AVERAGE NEAR 20 KNOTS...WITH A PERIOD OF
LESSENING WINDS LATE THIS AFTERNOON AND EVENING. ALTHOUGH WINDS
WILL DECREASE BELOW 20 KNOTS FOR A TIME...THE LONG FETCH OF
ONSHORE WINDS WILL KEEP SEAS AT HAZARDOUS LEVELS...GENERALLY 5 TO
7 FEET NEAR SHORE AND 6 TO 8 FEET OFFSHORE.

.DAYS TWO THROUGH SEVEN...FRIDAY THROUGH NEXT WEDNESDAY.

BOATING CONDITIONS WILL REMAIN HAZARDOUS THROUGH THE DAY FRIDAY.

A COMPLEX WEATHER SYSTEM IS FORECAST TO APPROACH THE REGION THIS
WEEKEND AND EARLY NEXT WEEK...PROVIDING AN INCREASED CHANCE FOR
RAIN AND EVENTUALLY THUNDERSTORMS. THE EVOLUTION OF SPECIFIC
WEATHER FEATURES...SUCH AS SURFACE LOW DEVELOPMENT AND
TRACK...REMAIN UNCLEAR. NONETHELESS...CONFIDENCE CONTINUES TO
INCREASE THAT EAST CENTRAL FLORIDA WILL SEE SEVERAL ROUNDS OF
PRECIPITATION THIS WEEKEND AND INTO EARLY NEXT WEEK. THE
STRONGEST
AND MOST ORGANIZED OF THESE STORMY PERIODS LOOKS TO OCCUR

BETWEEN
CHRISTMAS EVE AND THE FIRST HALF OF CHRISTMAS DAY. SUBSEQUENT
FORECASTS WILL REFINE THE IMPACTS AND TIMING OF THIS WEATHER
SYSTEM UPON EAST CENTRAL FLORIDA. CHECK LATER FORECASTS AND
STATEMENTS THROUGH THE WEEKEND FOR UPDATES.

.SPOTTER INFORMATION STATEMENT...

SPOTTER ACTIVATION WILL NOT BE NEEDED TODAY.

\$\$

SPRATT

HAZARDOUS WEATHER OUTLOOK
NATIONAL WEATHER SERVICE MELBOURNE FL
628 PM EST THU DEC 21 2006

AMZ550-555-570-575-FLZ041-044>047-053-054-058-059-064-141-144-147-
221030-

COASTAL WATERS FROM FLAGLER BEACH TO COCOA BEACH OUT 20 NM-
COASTAL WATERS FROM COCOA BEACH TO JUPITER INLET OUT 20 NM-
WATERS FROM FLAGLER BEACH TO COCOA BEACH 20 TO 60 NM OFFSHORE-
WATERS FROM COCOA BEACH TO JUPITER INLET 20 TO 60 NM OFFSHORE-
INLAND VOLUSIA-NORTHERN LAKE-ORANGE-SEMINOLE-SOUTHERN BREVARD-
OSCEOLA-INDIAN RIVER-OKEECHOBEE-ST. LUCIE-MARTIN-COASTAL VOLUSIA-
SOUTHERN LAKE-NORTHERN BREVARD-
628 PM EST THU DEC 21 2006

THIS HAZARDOUS WEATHER OUTLOOK IS FOR EAST CENTRAL FLORIDA.

.DAY ONE...TONIGHT.

...WIND AND SEA IMPACT...

HAZARDOUS BOATING CONDITIONS WILL CONTINUE INTO FRIDAY. SOUTHEAST
WINDS WILL AVERAGE AROUND 20 KNOTS OVERNIGHT. ALTHOUGH WINDS
WILL
DECREASE BELOW 20 KNOTS FOR A TIME...THE LONG FETCH OF ONSHORE
WINDS WILL KEEP SEAS AT HAZARDOUS LEVELS...GENERALLY 5 TO 7 FEET
NEAR SHORE AND 6 TO 8 FEET OFFSHORE.

.DAYS TWO THROUGH SEVEN...FRIDAY THROUGH WEDNESDAY.

BOATING CONDITIONS WILL REMAIN HAZARDOUS THROUGH THE DAY FRIDAY.

A COMPLEX WEATHER SYSTEM IS FORECAST TO APPROACH THE REGION THIS
WEEKEND AND EARLY NEXT WEEK...PROVIDING AN INCREASED CHANCE FOR
RAIN AND EVENTUALLY THUNDERSTORMS. THE EVOLUTION OF SPECIFIC

WEATHER FEATURES...SUCH AS SURFACE LOW DEVELOPMENT AND TRACK...
REMAIN UNCLEAR. NONETHELESS...CONFIDENCE CONTINUES TO INCREASE
THAT EAST CENTRAL FLORIDA WILL SEE SEVERAL ROUNDS OF PRECIPITATION
THIS WEEKEND AND INTO EARLY NEXT WEEK. THE STRONGEST AND MOST
ORGANIZED OF THESE STORMY PERIODS LOOKS TO OCCUR BETWEEN
CHRISTMAS
EVE AND THE FIRST HALF OF CHRISTMAS DAY. SUBSEQUENT FORECASTS
WILL
REFINE THE IMPACTS AND TIMING OF THIS WEATHER SYSTEM UPON EAST
CENTRAL FLORIDA. CHECK LATER FORECASTS AND STATEMENTS THROUGH
THE
WEEKEND FOR UPDATES.

.SPOTTER INFORMATION STATEMENT...

SPOTTER ACTIVATION WILL NOT BE NEEDED TODAY.

\$\$

SPRATT/KELLY

HAZARDOUS WEATHER OUTLOOK
NATIONAL WEATHER SERVICE MELBOURNE FL
540 AM EST FRI DEC 22 2006

AMZ550-555-570-575-FLZ041-044>047-053-054-058-059-064-141-144-147-
222245-

COASTAL WATERS FROM FLAGLER BEACH TO COCOA BEACH OUT 20 NM-
COASTAL WATERS FROM COCOA BEACH TO JUPITER INLET OUT 20 NM-
WATERS FROM FLAGLER BEACH TO COCOA BEACH 20 TO 60 NM OFFSHORE-
WATERS FROM COCOA BEACH TO JUPITER INLET 20 TO 60 NM OFFSHORE-
INLAND VOLUSIA-NORTHERN LAKE-ORANGE-SEMINOLE-SOUTHERN BREVARD-
OSCEOLA-INDIAN RIVER-OKEECHOBEE-ST. LUCIE-MARTIN-COASTAL VOLUSIA-
SOUTHERN LAKE-NORTHERN BREVARD-
540 AM EST FRI DEC 22 2006

THIS HAZARDOUS WEATHER OUTLOOK IS FOR EAST CENTRAL FLORIDA.

.DAY ONE...TODAY AND TONIGHT.

...THUNDERSTORM IMPACT...

SCATTERED SHOWERS ARE EXPECTED LATE THIS AFTERNOON. TONIGHT...A
BAND OF SHOWERS AND ISOLATED THUNDERSTORMS IS FORECAST TO DROP
SOUTHWARD TO THE CENTRAL FLORIDA PENINSULA. OCCASIONAL CLOUD TO
GROUND LIGHTNING STRIKES AND PERIODS OF LOCALLY HEAVY RAINFALL
WILL BE POSSIBLE...MAINLY FROM ORLANDO AND CAPE CANAVERAL
NORTHWARD LATE THIS EVENING AND DURING THE EARLY MORNING HOURS
OF SATURDAY.

...WIND AND SEA IMPACT...

SOUTHEAST WINDS NEAR 20 KNOTS WILL BECOME SOUTHERLY THIS AFTERNOON

AND WILL LESSEN A LITTLE THIS EVENING. SEAS OF 5 TO 8 FEET WILL OCCUR TODAY...THEN WILL SUBSIDE TO 3 TO 5 FEET NEAR SHORE BY EARLY SATURDAY...BUT WILL REMAIN 5 TO 7 FEET OFFSHORE. A SMALL CRAFT ADVISORY IS IN EFFECT UNTIL THIS EVENING FOR THE NEAR SHORE WATERS AND UNTIL SATURDAY MORNING FOR THE OFFSHORE WATERS.

ALTHOUGH THE RIP CURRENT THREAT WILL BE LOW TODAY...SURF WILL BE ROUGH AND A FEW RIP CURRENTS WILL BE LIKELY NEAR PIERS AND JETTIES.

.DAYS TWO THROUGH SEVEN...SATURDAY THROUGH NEXT THURSDAY.

A COMPLEX WEATHER SYSTEM IS FORECAST TO APPROACH THE REGION THIS WEEKEND AND EARLY NEXT WEEK...PROVIDING AN INCREASED CHANCE FOR RAIN AND THUNDERSTORMS. THE EVOLUTION OF SPECIFIC WEATHER FEATURES...SUCH AS SURFACE LOW DEVELOPMENT AND TRACK...REMAIN UNCLEAR. NONETHELESS...CONFIDENCE CONTINUES TO INCREASE THAT EAST

CENTRAL FLORIDA WILL SEE SEVERAL ROUNDS OF PRECIPITATION THIS WEEKEND AND INTO EARLY NEXT WEEK. THE STRONGEST AND MOST ORGANIZED

OF THESE STORMY PERIODS NOW LOOKS TO OCCUR ON CHRISTMAS DAY. SUBSEQUENT FORECASTS WILL REFINE THE IMPACTS AND TIMING OF THIS WEATHER SYSTEM UPON EAST CENTRAL FLORIDA. CHECK LATER FORECASTS AND STATEMENTS THROUGH THE WEEKEND FOR UPDATES.

WINDS AND SEAS WILL INCREASE BEHIND A COLD FRONT LATE MONDAY INTO TUESDAY. WINDS ARE FORECAST TO REACH 15 TO 20 KNOTS WITH SEAS BUILDING TO 4 TO 6 FEET...MAINLY OFFSHORE.

.SPOTTER INFORMATION STATEMENT...

SPOTTER ACTIVATION WILL NOT BE NEEDED TODAY.

\$\$

SPRATT

HAZARDOUS WEATHER OUTLOOK
NATIONAL WEATHER SERVICE MELBOURNE FL
605 AM EST SAT DEC 23 2006

AMZ550-555-570-575-FLZ041-044>047-053-054-058-059-064-141-144-147-232315-

COASTAL WATERS FROM FLAGLER BEACH TO COCOA BEACH OUT 20 NM-
COASTAL WATERS FROM COCOA BEACH TO JUPITER INLET OUT 20 NM-
WATERS FROM FLAGLER BEACH TO COCOA BEACH 20 TO 60 NM OFFSHORE-

WATERS FROM COCOA BEACH TO JUPITER INLET 20 TO 60 NM OFFSHORE-
INLAND VOLUSIA-NORTHERN LAKE-ORANGE-SEMINOLE-SOUTHERN BREVARD-
OSCEOLA-INDIAN RIVER-OKEECHOBEE-ST. LUCIE-MARTIN-COASTAL VOLUSIA-
SOUTHERN LAKE-NORTHERN BREVARD-
605 AM EST SAT DEC 23 2006

THIS HAZARDOUS WEATHER OUTLOOK IS FOR EAST CENTRAL FLORIDA.

.DAY ONE...TODAY AND TONIGHT.

...THUNDERSTORM IMPACT...

SEVERAL BANDS OF SHOWERS AND ISOLATED THUNDERSTORMS WILL MOVE
ACROSS

EAST CENTRAL FLORIDA AND THE ADJACENT COASTAL WATERS TODAY
AHEAD

OF A WEAKENING FRONTAL BOUNDARY. OCCASIONAL CLOUD TO GROUND
LIGHTNING...BRIEF PERIODS OF HEAVY RAIN...AND WIND GUSTS AROUND 25
MPH WILL ACCOMPANY THE ISOLATED STORMS. THUNDERSTORMS WILL BE
LESS

LIKELY TONIGHT...HOWEVER SCATTERED SHOWERS WILL REMAIN POSSIBLE.

...RIP CURRENT IMPACT...

A PERSISTENT THREE FOOT EASTERLY SWELL WILL GENERATE A MODERATE
THREAT FOR RIP CURRENTS TODAY. REMEMBER TO ALWAYS SWIM WITHIN
SIGHT OF A LIFEGUARD.

...WIND AND SEA IMPACT...

SOUTH TO SOUTHWEST WINDS NEAR 20 KNOTS OVER THE OFFSHORE
WATERS

THIS MORNING WILL PRODUCE 5 TO 7 FOOT SEAS. ACROSS THE NEAR SHORE
WATERS...WINDS WILL BE 15 TO 20 KNOTS...WITH SEAS OF 4 TO 6 FEET.

WIND AND SEA CONDITIONS WILL IMPROVE ACROSS THE COASTAL WATERS
THIS AFTERNOON AND TONIGHT...HOWEVER LOCALLY GUSTY WINDS AND
ROUGH

SEAS MAY STILL OCCUR NEAR HEAVY SHOWERS AND ISOLATED STORMS.

.DAYS TWO THROUGH SEVEN...SUNDAY THROUGH NEXT FRIDAY.

SEVERE STORMS POSSIBLE CHRISTMAS DAY.

A LARGE AND COMPLEX WEATHER SYSTEM WILL MOVE FROM THE SOUTHERN
PLAINS TO THE SOUTHEASTERN STATES THROUGH EARLY NEXT WEEK. A
DEEP

AND MOIST SOUTH TO SOUTHWEST WIND FLOW WILL PRODUCE PERIODS OF
SHOWERS AND ISOLATED STORMS ACROSS THE REGION SUNDAY AND
SUNDAY

NIGHT. MEANWHILE...A LOW PRESSURE SYSTEM WILL TAKE SHAPE OVER THE
GULF OF MEXICO AND STRENGTHEN AS IT MOVES TOWARD THE EXTREME
WESTERN FLORIDA PANHANDLE BY EARLY ON CHRISTMAS. AS THE LOW
CONTINUES TO DEEPEN AND MOVE NORTHEAST DURING CHRISTMAS DAY...A
SQUALL LINE WILL FORM AHEAD OF A COLD FRONT TRAILING FROM THE LOW

THROUGH THE EASTERN GULF. THIS SQUALL LINE IS FORECAST TO CROSS CENTRAL FLORIDA CHRISTMAS DAY...MOST LIKELY DURING THE AFTERNOON. THE POTENTIAL EXISTS FOR SOME STORMS WITHIN THE LINE TO SEVERE... WITH THE GREATEST THREAT BEING DAMAGING WINDS OVER 55 MPH. SINCE THIS POTENTIALLY DANGEROUS WEATHER EVENT IS STILL SEVERAL DAYS AWAY...UNCERTAINTY STILL EXISTS AS TO HOW STRONG IT WILL BE AND WHAT AREAS WILL BE MOST IMPACTED. SUBSEQUENT FORECASTS WILL REFINE THE IMPACTS AND TIMING OF THIS WEATHER SYSTEM UPON EAST CENTRAL FLORIDA. CHECK LATER FORECASTS AND STATEMENTS THROUGH THE WEEKEND FOR UPDATES.

WINDS AND SEAS WILL INCREASE SIGNIFICANTLY BEHIND A COLD FRONT LATE MONDAY INTO TUESDAY. OFFSHORE WINDS ARE FORECAST TO REACH 20 TO 25 KNOTS WITH HIGHER GUSTS...WHICH WILL DRIVE SEAS TO AT LEAST 5 TO 7 FEET AWAY FROM THE IMMEDIATE COAST.

.SPOTTER INFORMATION STATEMENT...

HAZARDOUS WEATHER OUTLOOK...UPDATED
NATIONAL WEATHER SERVICE MELBOURNE FL
950 AM EST SAT DEC 23 2006

AMZ550-555-570-575-FLZ041-044>047-053-054-058-059-064-141-144-147-232315-

COASTAL WATERS FROM FLAGLER BEACH TO COCOA BEACH OUT 20 NM-
COASTAL WATERS FROM COCOA BEACH TO JUPITER INLET OUT 20 NM-
WATERS FROM FLAGLER BEACH TO COCOA BEACH 20 TO 60 NM OFFSHORE-
WATERS FROM COCOA BEACH TO JUPITER INLET 20 TO 60 NM OFFSHORE-
INLAND VOLUSIA-NORTHERN LAKE-ORANGE-SEMINOLE-SOUTHERN BREVARD-
OSCEOLA-INDIAN RIVER-OKEECHOBEE-ST. LUCIE-MARTIN-COASTAL VOLUSIA-
SOUTHERN LAKE-NORTHERN BREVARD-
950 AM EST SAT DEC 23 2006

THIS HAZARDOUS WEATHER OUTLOOK IS FOR EAST CENTRAL FLORIDA.

.DAY ONE...TODAY AND TONIGHT.

...THUNDERSTORM IMPACT...
SEVERAL BANDS OF SHOWERS AND ISOLATED THUNDERSTORMS WILL CONTINUE TO MOVE ACROSS THE COASTAL WATERS THIS MORNING AHEAD OF A WEAKENING FRONTAL BOUNDARY. OCCASIONAL CLOUD TO GROUND LIGHTNING...BRIEF PERIODS OF HEAVY RAIN...AND WIND GUSTS AROUND 25 MPH WILL ACCOMPANY THE ISOLATED STORMS OFFSHORE. THUNDERSTORMS WILL BE LESS LIKELY THIS

AFTERNOON AND TONIGHT...HOWEVER SCATTERED SHOWERS WILL REMAIN POSSIBLE.

...RIP CURRENT IMPACT...

A PERSISTENT THREE FOOT EASTERLY SWELL WILL GENERATE A MODERATE THREAT FOR RIP CURRENTS TODAY. REMEMBER TO ALWAYS SWIM WITHIN SIGHT OF A LIFEGUARD.

...WIND AND SEA IMPACT...

WINDS AND SEAS OVER THE COASTAL WATERS CONTINUE TO DECREASE THIS MORNING...HOWEVER...SEAS WILL STILL BE 4 TO 6 FOOT INTO THIS AFTERNOON ACROSS THE OFFSHORE WATERS. SMALL CRAFT SHOULD EXERCISE

CAUTION FROM 20 TO 60 NAUTICAL MILES OFFSHORE. IN ADDITION...LOCALLY GUSTY WINDS AND ROUGH SEAS MAY STILL OCCUR NEAR HEAVY SHOWERS AND ISOLATED STORMS TODAY AND TONIGHT.

.DAYS TWO THROUGH SEVEN...SUNDAY THROUGH NEXT FRIDAY.

SEVERE STORMS POSSIBLE CHRISTMAS DAY.

A LARGE AND COMPLEX WEATHER SYSTEM WILL MOVE FROM THE SOUTHERN PLAINS TO THE SOUTHEASTERN STATES THROUGH EARLY NEXT WEEK. A DEEP

AND MOIST SOUTH TO SOUTHWEST WIND FLOW WILL PRODUCE PERIODS OF SHOWERS AND ISOLATED STORMS ACROSS THE REGION SUNDAY AND SUNDAY

NIGHT. MEANWHILE...A LOW PRESSURE SYSTEM WILL TAKE SHAPE OVER THE GULF OF MEXICO AND STRENGTHEN AS IT MOVES TOWARD THE EXTREME WESTERN FLORIDA PANHANDLE BY EARLY ON CHRISTMAS. AS THE LOW CONTINUES TO DEEPEN AND MOVE NORTHEAST DURING CHRISTMAS DAY...A SQUALL LINE WILL FORM AHEAD OF A COLD FRONT TRAILING FROM THE LOW THROUGH THE EASTERN GULF. THIS SQUALL LINE IS FORECAST TO CROSS CENTRAL FLORIDA CHRISTMAS DAY...MOST LIKELY DURING THE AFTERNOON.

THE POTENTIAL EXISTS FOR SOME STORMS WITHIN THE LINE TO SEVERE... WITH THE GREATEST THREAT BEING DAMAGING WINDS OVER 55 MPH. SINCE THIS POTENTIALLY DANGEROUS WEATHER EVENT IS STILL SEVERAL DAYS AWAY...UNCERTAINTY STILL EXISTS AS TO HOW STRONG IT WILL BE AND WHAT AREAS WILL BE MOST IMPACTED. SUBSEQUENT FORECASTS WILL REFINE

THE IMPACTS AND TIMING OF THIS WEATHER SYSTEM UPON EAST CENTRAL FLORIDA. CHECK LATER FORECASTS AND STATEMENTS THROUGH THE WEEKEND FOR UPDATES.

WINDS AND SEAS WILL INCREASE SIGNIFICANTLY BEHIND A COLD FRONT LATE MONDAY INTO TUESDAY. OFFSHORE WINDS ARE FORECAST TO REACH 20

TO 25 KNOTS WITH HIGHER GUSTS...WHICH WILL DRIVE SEAS TO AT LEAST 5 TO 7 FEET AWAY FROM THE IMMEDIATE COAST.

.SPOTTER INFORMATION STATEMENT...

SPOTTER ACTIVATION WILL NOT BE NEEDED TODAY.

\$\$

SPRATT/SEDLOCK

HAZARDOUS WEATHER OUTLOOK
NATIONAL WEATHER SERVICE MELBOURNE FL
444 AM EST SUN DEC 24 2006

AMZ550-555-570-575-FLZ041-044>047-053-054-058-059-064-141-144-147-
242100-
COASTAL WATERS FROM FLAGLER BEACH TO COCOA BEACH OUT 20 NM-
COASTAL WATERS FROM COCOA BEACH TO JUPITER INLET OUT 20 NM-
WATERS FROM FLAGLER BEACH TO COCOA BEACH 20 TO 60 NM OFFSHORE-
WATERS FROM COCOA BEACH TO JUPITER INLET 20 TO 60 NM OFFSHORE-
INLAND VOLUSIA-NORTHERN LAKE-ORANGE-SEMINOLE-SOUTHERN BREVARD-
OSCEOLA-INDIAN RIVER-OKEECHOBEE-ST. LUCIE-MARTIN-COASTAL VOLUSIA-
SOUTHERN LAKE-NORTHERN BREVARD-
444 AM EST SUN DEC 24 2006

THIS HAZARDOUS WEATHER OUTLOOK IS FOR EAST CENTRAL FLORIDA.

.DAY ONE...TODAY AND TONIGHT.

...THUNDERSTORM IMPACT...
A MOIST AND SLIGHTLY UNSTABLE AIRMASS WILL LEAD TO THE
DEVELOPMENT
OF ISOLATED THUNDERSTORMS THIS AFTERNOON. THE MAIN THREATS WITH
TODAYS
STORMS WILL BE THE POSSIBILITY OF BRIEF HEAVY RAIN AND DANGEROUS
CLOUD TO GROUND LIGHTNING. WIND GUSTS OF 35 MPH WILL BE POSSIBLE
NEAR THE STRONGER STORMS.

...MARINE THUNDERSTORM GUST IMPACT...
A FEW STORMS WILL BE POSSIBLE OVER THE NEARSHORE AND
INTRACOASTAL WATERS
OF VOLUSIA AND BREVARD COUNTIES. THESE STORMS WILL BE CAPABLE OF
PRODUCING
WIND GUSTS NEAR 30 KNOTS ALONG WITH VERY HEAVY RAINFALL AND
OCCASIONAL
CLOUD TO WATER LIGHTNING. BOATERS SHOULD KEEP AN EYE TO THE SKY
FOR
THE POSSIBILITY OF AN ISOLATED STORM THIS AFTERNOON AND EVENING.

.DAYS TWO THROUGH SEVEN...MONDAY THROUGH SATURDAY.
A STRONG LOW PRESSURE SYSTEM WILL TAKE SHAPE OVER THE GULF OF

MEXICO TONIGHT AND STRENGTHEN AS IT MOVES TOWARD THE EXTREME WESTERN FLORIDA PANHANDLE ON CHRISTMAS MORNING. A SQUALL LINE IS EXPECTED TO FORM AHEAD OF A COLD FRONT TRAILING FROM THE LOW THROUGH THE EASTERN GULF TONIGHT. THIS SQUALL LINE IS FORECAST TO CROSS CENTRAL FLORIDA DURING THE DAY ON CHRISTMAS. THE POTENTIAL EXISTS FOR SOME STORMS WITHIN THE LINE TO BECOME STRONG OR POSSIBLY SEVERE...WITH THE GREATEST THREAT BEING DAMAGING WINDS OVER 55 MPH AND VERY HEAVY RAIN. A COLD FRONT WILL MOVE OVER THE REGION EARLY TUESDAY BRINGING SEASONALLY COOLER AIR TO CENTRAL FLORIDA.

DURING THIS BUSY HOLIDAY PERIOD PERSONS SHOULD KEEP INFORMED OF UPDATED FORECASTS AS WELL AS STATEMENTS AND POSSIBLE WARNINGS FROM THE NATIONAL WEATHER SERVICE.

WINDS AND SEAS WILL INCREASE SIGNIFICANTLY BEHIND A COLD FRONT INTO TUESDAY. OFFSHORE WINDS ARE FORECAST TO REACH 20 TO 25 KNOTS WITH HIGHER GUSTS...WHICH WILL DRIVE SEAS TO AT LEAST 5 TO 7 FEET AWAY FROM THE IMMEDIATE COAST.

.SPOTTER INFORMATION STATEMENT...

SPOTTER ACTIVATION IS NOT EXPECTED TODAY.

\$\$

PENDERGRAST

HAZARDOUS WEATHER OUTLOOK
NATIONAL WEATHER SERVICE MELBOURNE FL
446 AM EST MON DEC 25 2006

AMZ550-555-570-575-FLZ041-044>047-053-054-058-059-064-141-144-147-252000-

COASTAL WATERS FROM FLAGLER BEACH TO COCOA BEACH OUT 20 NM-
COASTAL WATERS FROM COCOA BEACH TO JUPITER INLET OUT 20 NM-
WATERS FROM FLAGLER BEACH TO COCOA BEACH 20 TO 60 NM OFFSHORE-
WATERS FROM COCOA BEACH TO JUPITER INLET 20 TO 60 NM OFFSHORE-
INLAND VOLUSIA-NORTHERN LAKE-ORANGE-SEMINOLE-SOUTHERN BREVARD-
OSCEOLA-INDIAN RIVER-OKEECHOBEE-ST. LUCIE-MARTIN-COASTAL VOLUSIA-
SOUTHERN LAKE-NORTHERN BREVARD-
446 AM EST MON DEC 25 2006

THIS HAZARDOUS WEATHER OUTLOOK IS FOR EAST CENTRAL FLORIDA.

.DAY ONE...TODAY AND TONIGHT.

...THUNDERSTORM IMPACT...

...STRONG TO POSSIBLY SEVERE LIGHTNING STORMS THIS CHRISTMAS DAY...
A STRONG LOW PRESSURE CENTER MOVING OVER THE SOUTHEAST STATES
WILL SPREAD NUMEROUS SHOWERS AND LIGHTNING STORMS ACROSS THE
REGION TODAY. NUMEROUS STORMS COUPLED WITH STRONG WINDS IN THE
LOWER LEVELS OF THE ATMOSPHERE WILL ALLOW FOR SOME STRONG TO
POSSIBLY SEVERE STORMS TO DEVELOP. A SQUALL LINE IS EXPECTED TO
MOVE EAST ACROSS THE AREA DURING THE AFTERNOON AND STORMS WILL
PRODUCE LOCALLY HEAVY RAIN...FREQUENT CLOUD TO GROUND LIGHTING
AND
WIND GUSTS OF 40 TO 50 MPH POSSIBLE.

A FEW STORMS COULD BECOME SEVERE WITH WIND GUSTS NEAR 60 MPH
ALONG WITH SMALL HAIL AND TORNADOES. PERSONS ENJOYING HOLIDAY
ACTIVITIES SHOULD REMAIN ALERT TO THE CHANGING WEATHER CONDITIONS
AND BE PREPARED TO MOVE TO A PLACE OF SAFETY SHOULD A SEVERE
WEATHER WARNING BE ISSUED FOR YOUR AREA. CONTINUE TO MONITOR
NOAA
WEATHER RADIO AND YOUR LOCAL MEDIA FOR THE LATEST WEATHER
INFORMATION AND POSSIBLE SEVERE WEATHER WARNINGS AND
STATEMENTS
ISSUED BY THE NATIONAL WEATHER SERVICE.

...FLOOD IMPACT...
...LOCALLY HEAVY RAINFALL POSSIBLE TODAY...
MANY LIGHTNING STORMS WILL CONTAIN INTENSE RAINFALL RATES. RAIN
AMOUNTS OF TWO TO THREE INCHES ARE POSSIBLE...ESPECIALLY IN AREAS
THAT RECEIVE MULTIPLE STORM'S OVER SEVERAL HOURS. WATER WILL
ACCUMULATE IN LOW SPOTS AND TRADITIONALLY FLOOD PRONE AREAS
WHILE
MAKING DRIVING HAZARDOUS WHERE STANDING WATER IS EXPERIENCED.
MAKE
SURE TO REDUCE SPEED AND ALLOW EXTRA TIME TO REACH YOUR
DESTINATION.

...MARINE THUNDERSTORM GUST IMPACT...
NUMEROUS STORMS WILL MOVE EAST FROM THE LAND AREAS OUT OVER THE
INTRACOASTAL AND OPEN ATLANTIC WATERS. ASIDE FROM THE FACT THAT A
SMALL CRAFT ADVISORY IS IN EFFECT BOATERS WILL EXPERIENCE HIGHER
WINDS AND SEAS NEAR SCATTERED TO NUMEROUS STRONG STORMS
MOVING
OFFSHORE THIS AFTERNOON AND INTO THE EVENING.

...WATERSPOUT IMPACT...
THE COASTAL ENVIRONMENT IS TRADITIONALLY THE FAVORED AREA FOR THE
DEVELOPMENT OF WATERSPOUTS DUE TO ENHANCED TURNING OF LOCAL
WINDS
WITHIN THIS ZONE. STORMS MOVING OFFSHORE MAY PRODUCE A BRIEF
WATERSPOUT AT THE COAST.

...WIND AND SEA IMPACT...
STRONG AND GUSTY GRADIENT WINDS NEAR 20 TO 30 KNOTS WILL PRODUCE

SMALL CRAFT ADVISORY CONDITIONS INTO TUESDAY. WINDS AND SEAS WILL BE HIGHER NEAR STRONG STORMS MOVING OFFSHORE TODAY.

.DAYS TWO THROUGH SEVEN...TUESDAY THROUGH SUNDAY.
A COLD FRONT WILL MOVE OVER EAST CENTRAL FLORIDA ON TUESDAY.
DRYER AND COOLER AIR WILL MOVE INTO THE AREA AT MIDWEEK. ANOTHER FRONT IS EXPECTED TO MOVE NEAR THE AREA NEXT WEEKEND...HOWEVER NO
HAZARDOUS WEATHER IS EXPECTED AT THIS TIME.

.SPOTTER INFORMATION STATEMENT...

SPOTTERS GROUPS ARE REQUESTED TO MONITOR THE WEATHER AND SELF ACTIVATE THEIR NETWORK IF A WARNING IS ISSUED FOR YOUR AREA. COOPERATIVE RAINFALL OBSERVERS ARE REQUESTED TO REPORT RAIN AMOUNTS EXCEEDING TWO INCHES TO THE NATIONAL WEATHER SERVICE IN MELBOURNE.

\$\$

PENDERGRAST

FLC069-251745-
/O.NEW.KMLB.TO.W.0012.061225T1657Z-061225T1745Z/

BULLETIN - EAS ACTIVATION REQUESTED
TORNADO WARNING
NATIONAL WEATHER SERVICE MELBOURNE FL
1157 AM EST MON DEC 25 2006

THE NATIONAL WEATHER SERVICE IN MELBOURNE HAS ISSUED A

* TORNADO WARNING FOR...
NORTHWESTERN LAKE COUNTY IN EAST CENTRAL FLORIDA
THIS INCLUDES THE CITIES OF...TAVARES...MASCOTTE...LISBON...
LEESBURG...LAKE HARRIS...LAKE GRIFFIN...HOWEY IN THE HILLS...
EUSTIS...EMERALDA

* UNTIL 1245 PM EST

* AT 1156 AM EST...NATIONAL WEATHER SERVICE DOPPLER RADAR INDICATED
A
SEVERE THUNDERSTORM CAPABLE OF PRODUCING A TORNADO 8 MILES
WEST OF
MASCOTTE...MOVING NORTHEAST AT 45 MPH.

* THE TORNADO WILL BE NEAR...
LEESBURG...LAKE HARRIS AND 7 MILES NORTHWEST OF HOWEY IN THE HILLS
BY 1215 PM EST
LAKE GRIFFIN AND FRUITLAND PARK BY 1220 PM EST
LISBON...MID FLORIDA LAKES...BASSVILLE PARK AND EMERALDA BY 1225 PM

EST
7 MILES NORTHWEST OF EUSTIS BY 1230 PM EST

THE SAFEST PLACE TO BE DURING A TORNADO IS IN A STRONG BUILDING ON THE LOWEST FLOOR...IN AN INTERIOR ROOM SUCH AS A BATHROOM OR CLOSET.

KEEP AWAY FROM WINDOWS. GET UNDER A WORKBENCH OR OTHER PIECE OF STURDY FURNITURE. USE BLANKETS OR PILLOWS TO COVER YOUR BODY.

EVACUATE MOBILE HOMES OR VEHICLES FOR MORE SUBSTANTIAL SHELTER. IF NO

SHELTER IS AVAILABLE...LIE FLAT IN THE NEAREST DITCH OR OTHER LOW SPOT AND COVER YOUR HEAD WITH YOUR HANDS. ABANDON YOUR VEHICLE IF THE TORNADO IS NEARBY.

LAT...LON 2856 8215 2847 8198 2908 8149 2921 8173

\$\$

FLC069-127-251830-
/O.NEW.KMLB.TO.W.0013.061225T1739Z-061225T1830Z/

BULLETIN - EAS ACTIVATION REQUESTED
TORNADO WARNING
NATIONAL WEATHER SERVICE MELBOURNE FL
1239 PM EST MON DEC 25 2006

THE NATIONAL WEATHER SERVICE IN MELBOURNE HAS ISSUED A

* TORNADO WARNING FOR...
NORTHERN LAKE COUNTY IN EAST CENTRAL FLORIDA.

THIS INCLUDES THE CITIES OF EUSTIS...ASTOR AND ASTOR PARK.

NORTHWESTERN VOLUSIA COUNTY IN EAST CENTRAL FLORIDA.

THIS INCLUDES THE CITIES OF...PIERSON...BARBERVILLE AND SEVILLE.

* UNTIL 130 PM EST

* AT 1237 PM EST...NATIONAL WEATHER SERVICE DOPPLER RADAR INDICATED A
SEVERE THUNDERSTORM CAPABLE OF PRODUCING A TORNADO 6 MILES
NORTHWEST
OF EUSTIS...OR ABOUT NEAR LISBON...MOVING NORTHEAST AT 45 MPH.

* THE TORNADO WILL BE NEAR...
PIERSON AND BARBERVILLE BY 105 PM EST

THIS STORM IS CAPABLE OF PRODUCING A TORNADO AT ANY TIME. PEOPLE IN THE PATH OF THIS STORM SHOULD ACT NOW IN ORDER TO PROTECT THEMSELVES.

DO NOT WAIT FOR THE TORNADO TO DEVELOP BEFORE ACTING...YOU MAY NOT SEE OR HEAR ITS APPROACH. DO NOT GET CAUGHT OFF GUARD!

THE SAFEST PLACE TO BE DURING A TORNADO IS IN A STRONG BUILDING ON THE LOWEST FLOOR...IN AN INTERIOR ROOM SUCH AS A BATHROOM OR CLOSET.

KEEP AWAY FROM WINDOWS. GET UNDER A WORKBENCH OR OTHER PIECE OF STURDY FURNITURE. USE BLANKETS OR PILLOWS TO COVER YOUR BODY.

EVACUATE MOBILE HOMES OR VEHICLES FOR MORE SUBSTANTIAL SHELTER. IF NO SHELTER IS AVAILABLE...LIE FLAT IN THE NEAREST DITCH OR OTHER LOW SPOT AND COVER YOUR HEAD WITH YOUR HANDS.

THE TORNADO WILL LIKELY BE WRAPPED IN HEAVY RAIN MAKING IT DIFFICULT TO SEE. BE SMART AND REACT NOW!

LAT...LON 2893 8186 2882 8170 2939 8112 2955 8134

\$\$

PRELIMINARY LOCAL STORM REPORT
NATIONAL WEATHER SERVICE MELBOURNE FL
110 PM EST MON DEC 25 2006

..TIME...	..EVENT...	...CITY LOCATION...	...LAT.LON...
..DATE...	...MAG....	..COUNTY LOCATION..ST..	...SOURCE....
..REMARKS..			

1220 PM	TORNADO	LEESBURG	28.81N 81.88W
12/25/2006		LAKE	FL FIRE DEPT/RESCUE

POSSIBLE TORNADO LEESBURG AREA. MANY REPORTS OF DOWNED POWER LINES FROM LOCAL LAW ENFORCEMENT. STATE WARNING POINT REPORT OF ROOF AND STRUCTURE DAMAGE TO SEVERAL HOMES IN THE LEESBURG AREA NEAR SR-441 AND MARK DRIVE.

&&

\$\$

MRT

PRELIMINARY LOCAL STORM REPORT
NATIONAL WEATHER SERVICE MELBOURNE FL
118 PM EST MON DEC 25 2006

..TIME... ..EVENT... ..CITY LOCATION... ..LAT.LON...
..DATE... ..MAG.... ..COUNTY LOCATION..ST.. ..SOURCE....
..REMARKS..

0110 PM TSTM WND DMG 1 W DE LAND 29.04N 81.31W
12/25/2006 VOLUSIA FL AMATEUR RADIO

SKYWARN REPORT OF TREE DAMAGE AND ESTIMATED WIND GUST OF
50 TO 60 MPH.

&&

\$\$

MRT

FLC127-251915-
/O.NEW.KMLB.TO.W.0014.061225T1824Z-061225T1915Z/

BULLETIN - EAS ACTIVATION REQUESTED
TORNADO WARNING
NATIONAL WEATHER SERVICE MELBOURNE FL
125 PM EST MON DEC 25 2006

THE NATIONAL WEATHER SERVICE IN MELBOURNE HAS ISSUED A

* TORNADO WARNING FOR...
EASTERN VOLUSIA COUNTY IN EAST CENTRAL FLORIDA.

THIS INCLUDES THE CITIES OF...PORT ORANGE...SOUTH DAYTONA...PONCE
INLET...ORMOND BEACH...HOLLY HILL...EDGEWATER...DAYTONA BEACH.

* UNTIL 215 PM EST

* AT 125 PM EST...NATIONAL WEATHER SERVICE DOPPLER RADAR INDICATED A
SEVERE THUNDERSTORM CAPABLE OF PRODUCING A TORNADO 13 MILES
SOUTHWEST OF DAYTONA BEACH INTL SPEEDWAY...OR ABOUT NEAR LAKE
HELEN...MOVING NORTHEAST AT 45 MPH.

THIS STORM HAS ALREADY PRODUCE WIND DAMAGE IN DELAND...AND THE
SAME
STORM SYSTEM DAMAGED SEVERAL HOMES IN LAKE COUNTY NEAR
LESSBURG.

* THE TORNADO WILL BE NEAR...
DAYTONA BEACH INTL SPEEDWAY...SOUTH DAYTONA AND PORT ORANGE BY

135

PM EST

DAYTONA BEACH...HOLLY HILL...ORMOND BEACH AND 7 MILES NORTHWEST
OF
WILBUR BY THE SEA BY 140 PM EST

THIS STORM IS CAPABLE OF PRODUCING A TORNADO AT ANY TIME. PEOPLE IN
THE PATH OF THIS STORM SHOULD ACT NOW IN ORDER TO PROTECT
THEMSELVES.

DO NOT WAIT FOR THE TORNADO TO DEVELOP BEFORE ACTING...YOU MAY
NOT
SEE OR HEAR ITS APPROACH. DO NOT GET CAUGHT OFF GUARD!

THE SAFEST PLACE TO BE DURING A TORNADO IS IN A STRONG BUILDING ON
THE LOWEST FLOOR...IN AN INTERIOR ROOM SUCH AS A BATHROOM OR
CLOSET.

KEEP AWAY FROM WINDOWS. GET UNDER A WORKBENCH OR OTHER PIECE
OF
STURDY FURNITURE. USE BLANKETS OR PILLOWS TO COVER YOUR BODY.

EVACUATE MOBILE HOMES OR VEHICLES FOR MORE SUBSTANTIAL SHELTER.
IF NO
SHELTER IS AVAILABLE...LIE FLAT IN THE NEAREST DITCH OR OTHER LOW
SPOT AND COVER YOUR HEAD WITH YOUR HANDS.

LAT...LON 2907 8134 2894 8119 2896 8061 2972 8093

\$\$

PRELIMINARY LOCAL STORM REPORT
NATIONAL WEATHER SERVICE MELBOURNE FL
142 PM EST MON DEC 25 2006

..TIME... ..EVENT... ..CITY LOCATION... ..LAT.LON...
..DATE... ..MAG.... ..COUNTY LOCATION..ST.. ..SOURCE....
..REMARKS..

0130 PM TSTM WND DMG DE LAND 29.04N 81.30W
12/25/2006 VOLUSIA FL AMATEUR RADIO

SEVERAL LARGE PINE TREES DOWN ESTIMATED 60 FEET TALL WITH
24 INCH BASES. DAMAGE TO SEVERAL MOBILE HOMES WITH
DAMAGED CAR PORTS. REPORT FROM KD4LOL.

&&

\$\$

MRT

AMZ550-251945-
/O.NEW.KMLB.MA.W.0075.061225T1844Z-061225T1945Z/

BULLETIN - IMMEDIATE BROADCAST REQUESTED
SPECIAL MARINE WARNING
NATIONAL WEATHER SERVICE MELBOURNE FL
144 PM EST MON DEC 25 2006

THE NATIONAL WEATHER SERVICE IN MELBOURNE HAS ISSUED A

* SPECIAL MARINE WARNING FOR THE COASTAL WATERS...

FROM FLAGLER BEACH TO MOSQUITO LAGOON TO OUT TO 20 NM.

* UNTIL 245 PM EST

* AT 141 PM EST...NATIONAL WEATHER SERVICE DOPPLER RADAR INDICATED
A LINE OF THUNDERSTORMS WITH A HISTORY OF PRODUCING WIND DAMAGE
FROM ORMOND-BY-THE-SEA TO 34 MILES SOUTHWEST OF NEW SMYRNA
BEACH
...MOVING NORTHEAST AT 50 MPH.

*THE THUNDERSTORM WILL MOVE ACROSS THE VOLUSIA COUNTY COASTAL
WATERS
...PRODUCING STRONG WIND GUSTS AND POSSIBLY A FEW WATERSPOUTS.

AS THESE STORMS CROSS THE INTRACOASTAL WATERS AND BARRIER ISLAND
COMMUNITIES...THEN OVER THE ATLANTIC...THEY WILL PRODUCE STRONG
GUSTY
WINDS...ROUGH SEAS...HEAVY DOWNPOURS AND DANGEROUS LIGHTNING.
TRY TO
AVOID THESE STORMS IF POSSIBLE. IF YOU GET CAUGHT OFFSHORE...MAKE
SURE ALL SAFETY GEAR IS AVAILABLE AND LIFE JACKETS ARE BEING WORN
BY
YOU AND YOUR CREW.

THESE THUNDERSTORMS WILL LIKELY PRODUCE WINDS OVER 34 KNOTS AND
LOCALLY ROUGH SEAS. SMALL CRAFT...ESPECIALLY THOSE UNDER SAIL...
SHOULD MOVE TO A SAFE HARBOR IF POSSIBLE. MAKE SURE YOU AND YOUR
CREW
ARE WEARING APPROVED FLOTATION DEVICES DURING THESE HAZARDOUS
CONDITIONS.

A WATERSPOUT IS A TORNADO OVER WATER THAT CAN BE DANGEROUS AND
EVEN
DEADLY. SMALL CRAFT CAN BE SWAMPED OR OVERTURNED BY A
WATERSPOUT.
STAY AWAY FROM THEM AT ALL TIMES. IF A WATERSPOUT APPROACHES YOU
ON

LAND...SEEK SHELTER IMMEDIATELY IN THE INTERIOR OF A STURDY BUILDING. WATERSPOUTS CAN PRODUCE DAMAGE AS THEY COME ASHORE.

A TORNADO WATCH REMAINS IN EFFECT UNTIL 500 PM EST MONDAY AFTERNOON FOR EAST CENTRAL FLORIDA.

LAT...LON 2942 8118 2912 8102 2895 8107 2850 8133
2915 8075 3025 8020 3070 7994 3086 7988
3117 8004

\$\$

PRELIMINARY LOCAL STORM REPORT
NATIONAL WEATHER SERVICE MELBOURNE FL
202 PM EST MON DEC 25 2006

..TIME... ..EVENT... ..CITY LOCATION... ..LAT.LON...
..DATE... ..MAG.... ..COUNTY LOCATION..ST.. ..SOURCE....
..REMARKS..

0145 PM TSTM WND GST DAYTONA BEACH 29.21N 81.03W
12/25/2006 E0 MPH VOLUSIA FL AMATEUR RADIO

LARGE TREES DOWN NEAR DAYTONA BEACH POLICE STATION NEAR NOVA AND RANGE ROADS. TREES 24 INCH IN DIAMETER. REPORT FROM KD4LOL.

&&

\$\$

MRT

FLC009-095-127-252015-
/O.NEW.KMLB.SV.W.0050.061225T1909Z-061225T2015Z/

BULLETIN - EAS ACTIVATION REQUESTED
SEVERE THUNDERSTORM WARNING
NATIONAL WEATHER SERVICE MELBOURNE FL
210 PM EST MON DEC 25 2006

THE NATIONAL WEATHER SERVICE IN MELBOURNE HAS ISSUED A

* SEVERE THUNDERSTORM WARNING FOR...

NORTHWESTERN BREVARD COUNTY.

THIS INCLUDES THE CITIES OF...TITUSVILLE AIRPORT...TITUSVILLE...
SCOTTSMOOR...PORT SAINT JOHN...PLAYALINDA BEACH...MIMS...
HAULOVER CANAL...LONE CABBAGE FISH CAMP.

EASTERN ORANGE COUNTY.

THIS INCLUDES THE CITIES OF...CHRISTMAS...BITHLO.

SOUTHEASTERN VOLUSIA COUNTY.

THIS INCLUDES THE CITY OF MAYTOWN.

* UNTIL 315 PM EST

* AT 210 PM EST...NATIONAL WEATHER SERVICE DOPPLER RADAR INDICATED A
LINE OF SEVERE THUNDERSTORMS CAPABLE OF PRODUCING DAMAGING
WINDS IN
EXCESS OF 60 MPH. THESE STORMS WERE LOCATED ALONG A LINE
EXTENDING
FROM BITHLO TO 15 MILES SOUTHWEST OF LONE CABBAGE FISH CAMP...OR
ALONG A LINE EXTENDING FROM BITHLO TO 11 MILES NORTH OF HOLOPAW...
AND MOVING NORTHEAST AT 50 MPH.

* SEVERE THUNDERSTORMS WILL BE NEAR...
CHRISTMAS BY 215 PM EST.
CANAVERAL ACRES AND LONE CABBAGE FISH CAMP BY 220 PM EST.
MAYTOWN AND SCOTTSMOOR BY 225 PM EST.
TITUSVILLE AIRPORT...TITUSVILLE...PORT SAINT JOHN AND MIMS
BY 230 PM EST.
APOLLO BEACH BY 235 PM EST.

SEVERE THUNDERSTORMS PRODUCE DAMAGING WINDS IN EXCESS OF 58
MILES AN
HOUR AND OR LARGE DESTRUCTIVE HAIL. FREQUENT TO EXCESSIVE
LIGHTNING
AND VERY HEAVY RAIN WILL ALSO BE POSSIBLE. IF THE STORM APPROACHES
YOU...SEEK SHELTER IN AN ENCLOSED BUILDING ON THE LOWEST FLOOR.
KEEP
AWAY FROM WINDOWS.

SEVERE THUNDERSTORMS CAN PRODUCE TORNADOES WITH LITTLE OR NO
ADVANCE
WARNING! A TORNADO WATCH REMAINS IN EFFECT UNTIL 500 PM EST
MONDAY
AFTERNOON FOR EAST CENTRAL FLORIDA.

LAT...LON 2865 8116 2814 8110 2888 8037 2939 8043

\$\$

CRISTALDI

FLC009-252100-
/O.NEW.KMLB.SV.W.0051.061225T1959Z-061225T2100Z/

BULLETIN - EAS ACTIVATION REQUESTED
SEVERE THUNDERSTORM WARNING
NATIONAL WEATHER SERVICE MELBOURNE FL
259 PM EST MON DEC 25 2006

THE NATIONAL WEATHER SERVICE IN MELBOURNE HAS ISSUED A

* SEVERE THUNDERSTORM WARNING FOR...
CENTRAL BREVARD COUNTY
THIS INCLUDES THE CITIES OF...ROCKLEDGE...PATRICK AIR FORCE BASE...
PALM BAY...MELBOURNE...MALABAR...SATELLITE BEACH...INDIALANTIC...
GRANT...CAMP HOLLY FISH CAMP

* UNTIL 400 PM EST

* AT 257 PM EST...NATIONAL WEATHER SERVICE DOPPLER RADAR INDICATED A
SEVERE THUNDERSTORM CAPABLE OF PRODUCING DAMAGING WINDS IN
EXCESS
OF 60 MPH. THIS STORM WAS LOCATED NEAR MELBOURNE...AND MOVING
NORTHEAST AT 45 MPH.

* THE SEVERE THUNDERSTORM WILL BE NEAR...
PATRICK AIRFORCE BASE AND SATELLITE BEACH BY 305 PM EST

SEVERE THUNDERSTORMS PRODUCE DAMAGING WINDS IN EXCESS OF 58
MILES AN
HOUR AND OR LARGE DESTRUCTIVE HAIL. FREQUENT TO EXCESSIVE
LIGHTNING
AND VERY HEAVY RAIN WILL ALSO BE POSSIBLE. IF THE STORM APPROACHES
YOU...SEEK SHELTER IN AN ENCLOSED BUILDING ON THE LOWEST FLOOR.
KEEP
AWAY FROM WINDOWS.

LAT...LON 2823 8099 2788 8085 2790 8039 2835 8066

\$\$

PRELIMINARY LOCAL STORM REPORT
NATIONAL WEATHER SERVICE MELBOURNE FL
302 PM EST MON DEC 25 2006

..TIME... ..EVENT... ..CITY LOCATION... ..LAT.LON...
..DATE... ..MAG... ..COUNTY LOCATION..ST.. ..SOURCE....
..REMARKS..

0141 PM TSTM WND DMG DAYTONA BEACH 29.21N 81.03W
12/25/2006 VOLUSIA FL LAW ENFORCEMENT

PRELIMINARY REPORT OF OVER-TURNED SMALL AIRCRAFT AT EMBRY
RIDDLE COLLEGE NEAR NOVA ROAD.

&&

\$\$

MRT

PRELIMINARY LOCAL STORM REPORT
NATIONAL WEATHER SERVICE MELBOURNE FL
305 PM EST MON DEC 25 2006

..TIME... ..EVENT... ..CITY LOCATION... ..LAT.LON...
..DATE... ..MAG.... ..COUNTY LOCATION..ST.. ..SOURCE....
..REMARKS..

0135 PM TSTM WND DMG DE LAND 29.04N 81.30W
12/25/2006 VOLUSIA FL AMATEUR RADIO

POSSIBLE TORNADO. PRELIMINARY REPORT OF DAMAGE AT STATE
ROAD 17/92 AND HWY 11.

&&

\$\$

MRT

PRELIMINARY LOCAL STORM REPORT
NATIONAL WEATHER SERVICE MELBOURNE FL
315 PM EST MON DEC 25 2006

..TIME... ..EVENT... ..CITY LOCATION... ..LAT.LON...
..DATE... ..MAG.... ..COUNTY LOCATION..ST.. ..SOURCE....
..REMARKS..

0310 PM TSTM WND GST 5 N MELBOURNE 28.15N 80.61W
12/25/2006 M55 MPH BREVARD FL OTHER FEDERAL

MILITARY. PATRICK AIR FORCE BASE GUST TO 48 KNOTS.

&&

\$\$

MRT

PRELIMINARY LOCAL STORM REPORT
NATIONAL WEATHER SERVICE MELBOURNE FL
412 PM EST MON DEC 25 2006

..TIME... ..EVENT... ..CITY LOCATION... ..LAT.LON...
..DATE... ..MAG.... ..COUNTY LOCATION..ST.. ..SOURCE....
..REMARKS..

0130 PM TORNADO DE LAND 29.04N 81.30W
12/25/2006 VOLUSIA FL LAW ENFORCEMENT

*** 1 INJ *** SIGNIFICANT DAMAGE TO ROSEWOOD FERNWOOD
MOBILE HOME PARK 1 SERIOUS INJURY

&&

\$\$

FXD

PRELIMINARY LOCAL STORM REPORT
NATIONAL WEATHER SERVICE MELBOURNE FL
528 PM EST MON DEC 25 2006

..TIME... ..EVENT... ..CITY LOCATION... ..LAT.LON...
..DATE... ..MAG.... ..COUNTY LOCATION..ST.. ..SOURCE....
..REMARKS..

0141 PM TORNADO DAYTONA BEACH 29.21N 81.03W
12/25/2006 VOLUSIA FL NWS STORM SURVEY

NWS MELBOURNE SURVEY TEAM INDICATE AN F2 TORNADO AROUND
120 MPH IN THE EMBRY/RIDDLE AREA.

&&

\$\$

FXD

PRELIMINARY LOCAL STORM REPORT
NATIONAL WEATHER SERVICE MELBOURNE FL
607 PM EST MON DEC 25 2006

..TIME... ..EVENT... ..CITY LOCATION... ..LAT.LON...
..DATE... ..MAG.... ..COUNTY LOCATION..ST.. ..SOURCE....
..REMARKS..

0155 PM TORNADO DAYTONA BEACH 29.21N 81.03W
12/25/2006 VOLUSIA FL NWS STORM SURVEY

NWS MELBOURNE SURVEY TEAM INDICATE AN F2 AROUND 120 MPH
AT THE SUTTON APARTMENTS.

&&

\$\$

FXD

PRELIMINARY LOCAL STORM REPORT
NATIONAL WEATHER SERVICE MELBOURNE FL
711 PM EST MON DEC 25 2006

..TIME... ..EVENT... ..CITY LOCATION... ..LAT.LON...
..DATE... ..MAG.... ..COUNTY LOCATION..ST.. ..SOURCE....
..REMARKS..

0130 PM TORNADO DE LAND 29.04N 81.30W
12/25/2006 VOLUSIA FL LAW ENFORCEMENT

*** 7 INJ *** UPDATED ROSEWOOD FERNWOOD MOBILE HOME PARK
INJURIES, NOW AT 7 WITH 2 SERIOUS.

&&

\$\$

FXD

PRELIMINARY LOCAL STORM REPORT
NATIONAL WEATHER SERVICE MELBOURNE FL
1024 AM EST TUE DEC 26 2006

..TIME... ..EVENT... ..CITY LOCATION... ..LAT.LON...

..DATE... ..MAG.... ..COUNTY LOCATION..ST.. ...SOURCE....
..REMARKS..

0145 PM TORNADO DAYTONA BEACH 29.21N 81.03W
12/25/2006 VOLUSIA FL NWS STORM SURVEY

*** 6 INJ *** UPDATE...F2 TORNADO TOUCHED DOWN JUST WEST OF FLIGHT LINE AT EMBRY RIDDLE UNIVERSITY AND CONTINUED NORTHEAST ON GROUND FOR 2.7 MILES CROSSING NOVA ROAD AT SUTTON PLACE APARTMENTS AND ENDING AT BEACH STREET JUST SOUTH OF HIGHWAY 92. TORNADO WAS APROX 200 YARDS WIDE AT EMBRY RIDDLE.

&&

THE TORNADO NARROWED AFTER LEAVING EMBRY RIDDLE AND THE F2 DAMAGE WAS NOT CONTINUOUS ALONG THE ENTIRE 2.7 MILE PATH. THE LAST TIME A TORNADO OF THIS MAGNITUDE EFFECTED VOLUSIA COUNTY WAS ON FEBRUARY 23RD 1998.
\$\$

BCH

PRELIMINARY LOCAL STORM REPORT
NATIONAL WEATHER SERVICE MELBOURNE FL
1050 AM EST TUE DEC 26 2006

..TIME... ..EVENT... ..CITY LOCATION... ..LAT.LON...
..DATE... ..MAG.... ..COUNTY LOCATION..ST.. ...SOURCE....
..REMARKS..

0130 PM TORNADO 3 N DE LAND 29.08N 81.30W
12/25/2006 VOLUSIA FL NWS STORM SURVEY

*** 7 INJ *** INTIAL STORM SURVEY TEAM REPORTS F2 TORNADO STRUCK NORTH SIDE OF DELAND NEAR HIGHWAY 17 AND 11 INTERSECTION YESTERDAY. WIND ESTIMATES ARE IN THE 120 TO 150 MPH RANGE. DAMAGE IS SEVERE IN SOME PLACES WITH TOTAL DESTRUCTION OF MANUFACTURED HOMES. AN UPDATED SURVEY REPORT WILL BE SENT LATER TODAY. TEAM WILL NOW HEAD TO LEESBURG AREA. INJURY INFORMATION PRELIMINARY.

&&

\$\$

BCH

Damage Photos:



Damage to Embry Riddle Aeronautical University



Damage to Embry Riddle Aeronautical University



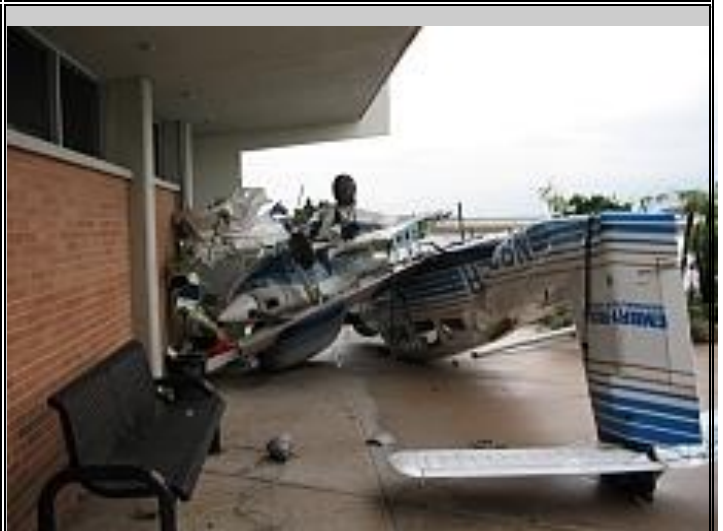
Damage to Embry Riddle Aeronautical University



Damage to aircraft at Daytona Airport



Damage to aircraft at Daytona Airport



Damage to aircraft at Daytona Airport



Damage to Apartments in Daytona Beach



Damage to Apartments in Daytona Beach



Damage in the Deland Area



Damage in the Deland Area



Damage in the Deland Area



Damage in the Deland Area



Damage in the Deland Area.

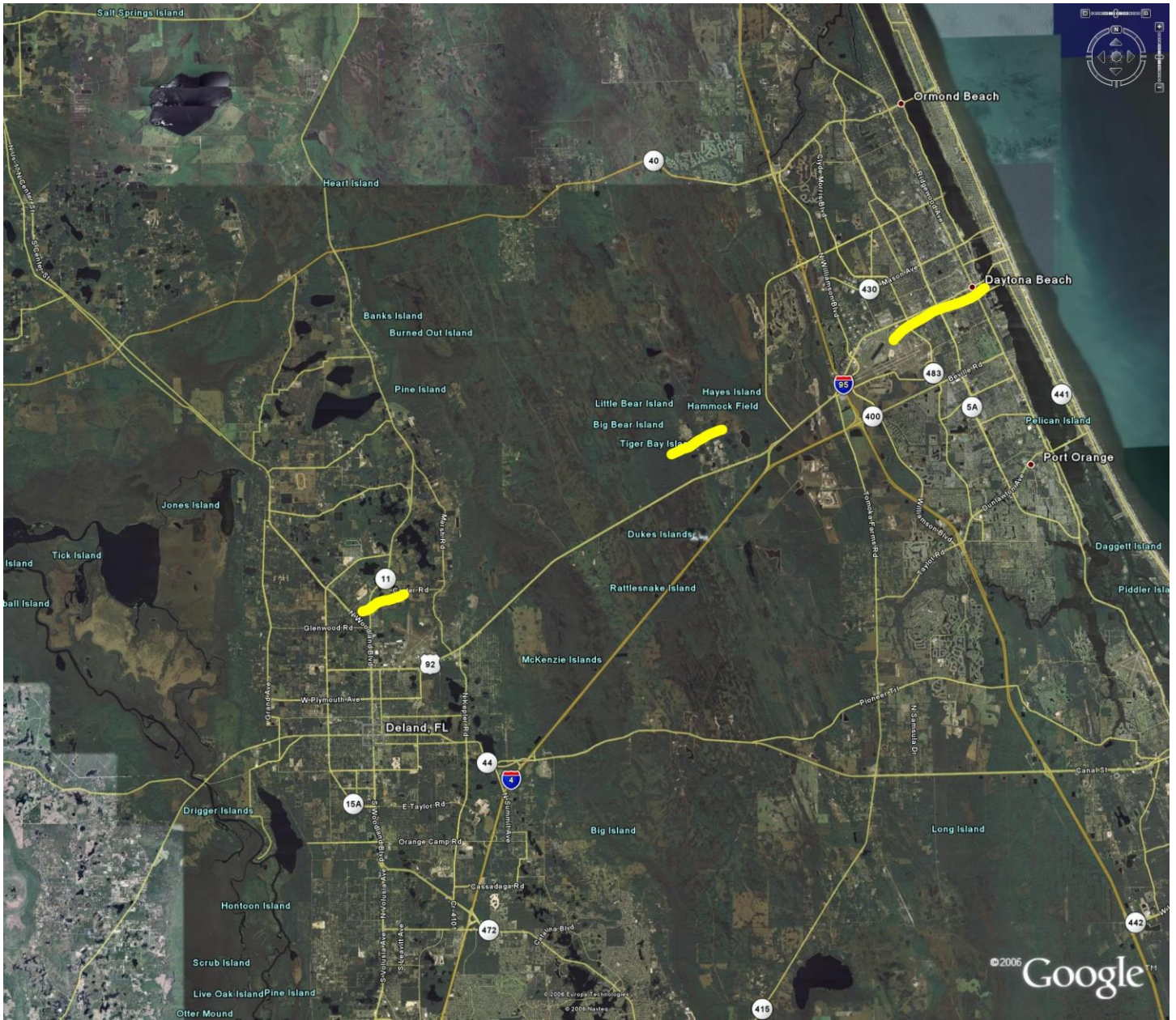


Damage in the Deland Area.



Damage in the Deland Area

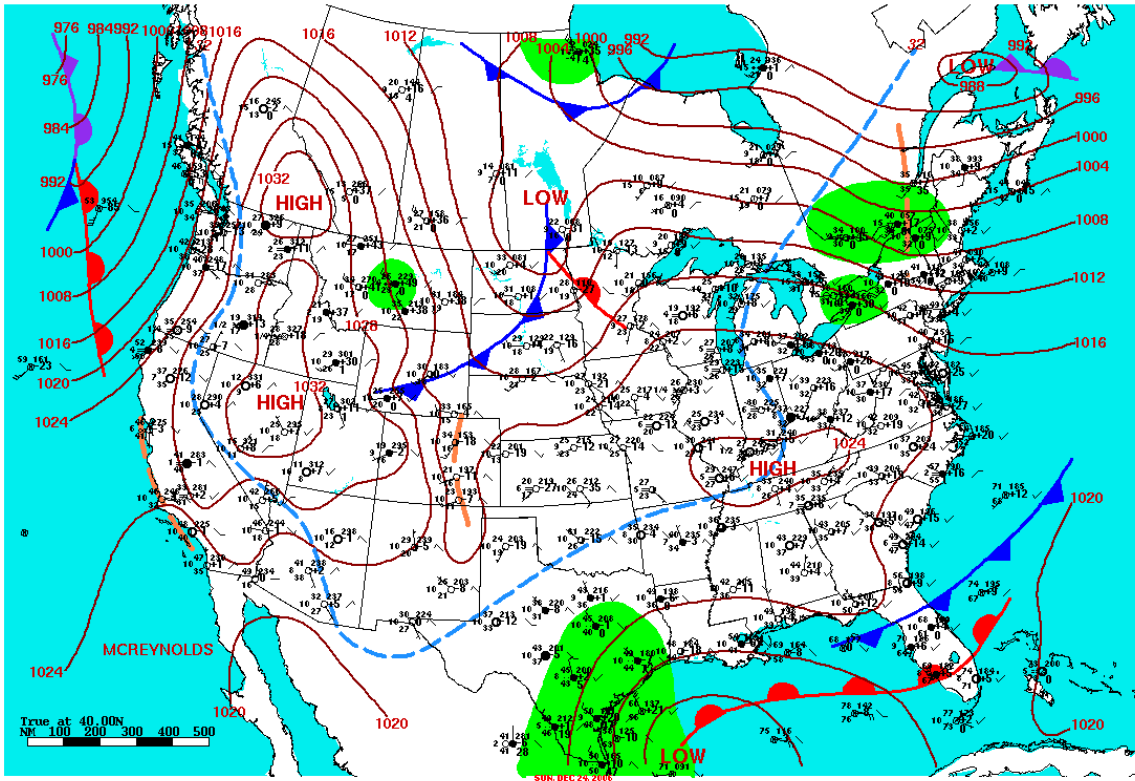
Additional Information:



Overview map with Deland and Daytona Beach tracks displayed.

Daily Weather Map

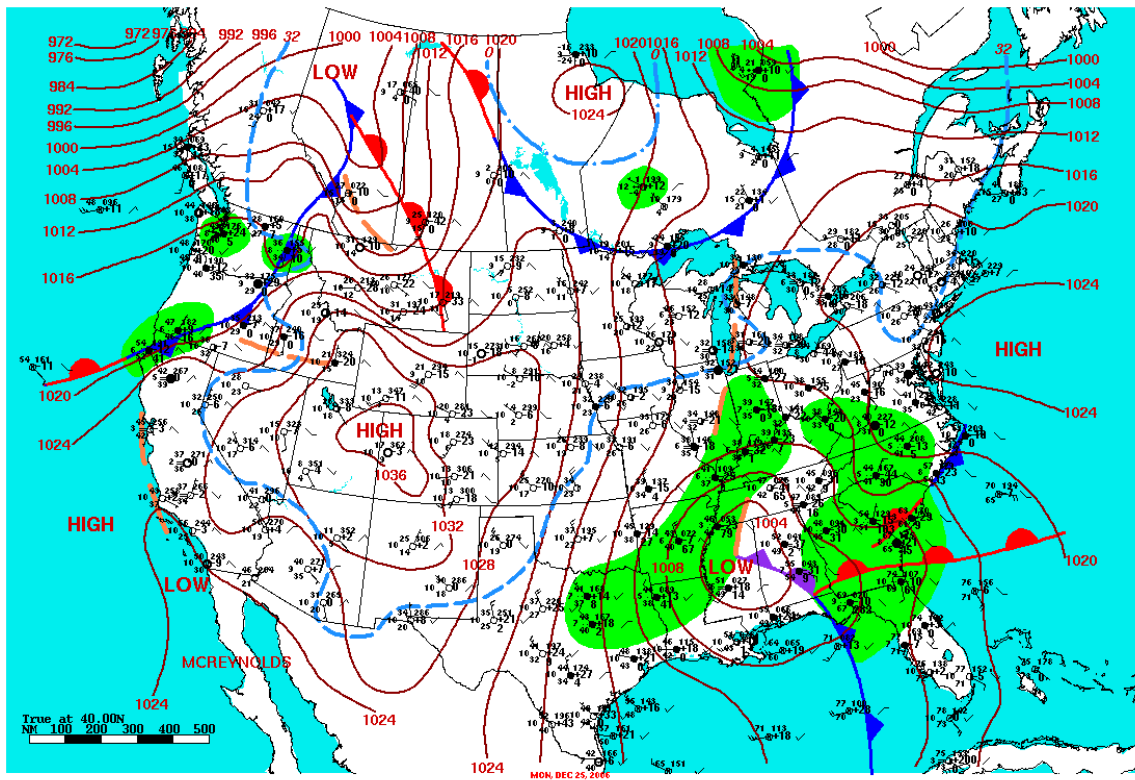
December 24, 2006



Surface Weather Map and Station Weather at 7:00 A.M. E.S.T.

Daily Weather Map

December 25th



Surface Weather Map and Station Weather at 7:00 A.M. E.S.T.

[Governor's request to the President for disaster aid. \(Includes damage figures\)](#) PDF

There's a connection between dry season severe weather in Florida and sea surface temperatures in the Pacific Ocean. [Read about it here](#) and [here](#).