



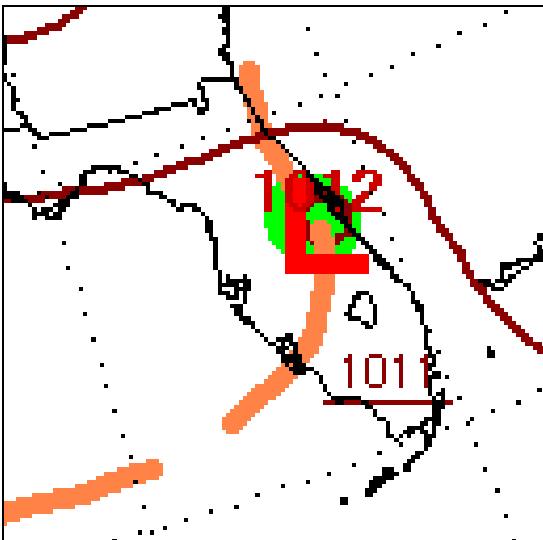
National Weather Service Melbourne, Florida

<http://www.srh.noaa.gov/mlb/>

Event Date: September 13, 2016

Tropical Low Pressure Moves Over East Central Florida Bringing High Winds, Heavy Rainfall and a Tornado

An area of tropical low pressure (which eventually became classified as Tropical Storm Julia) began to become better organized as it drifted over East Central Florida on Tuesday, September 13. The low brought torrential rainfall and strong winds, along with a tornado in extreme southern Brevard County.



Surface weather map at 8 AM EDT 9/13 (WPC).

A National Weather Service storm survey conducted the following morning determined that an EF-0 tornado occurred in the early afternoon in southern Brevard County. Public Information Statement released from survey follows on next page.

Public Information Statement
National Weather Service Melbourne FL
118 PM EDT WED SEP 14 2016

...Damage Survey for 09/13/16 Tornado Event...

...Isolated tornado developed associated with tropical low pressure area...

.Rural Grant-Valkaria Tornado...

Rating: EF-0
Estimated Peak Wind: 75-85 MPH
Path length /Statute/: 3.0 Miles
Path width /Maximum/: 75 Yards
Fatalities: 0
Injuries: 0

Start date: Sep 13 2016
Start time: 151 PM EDT
Start location: 3 SW BAREFOOT BAY / BREVARD / FL
Start Lat/Lon: 28.858 / -80.551

End date: SEP 13 2016
End time: 158 PM EDT
End location: 2 NW BAREFOOT BAY / BREVARD / FL
End_lat/lon: 28.9126 / -80.5450

Survey Summary: National Weather Service Survey and eyewitness reports determined an EF-0 tornado touched down in the Saint Sebastian River Preserve State Park and moved north for approximately 3 miles before lifting. Most of the touchdown area was remote, but there was damage to a two block area that included Orchid Tree Drive, Cottonwood Drive and Crepe Myrtle Drive.

Specifically, numerous large tree branches were down, one single family home had partial roof removal and the patio enclosure destroyed. A second home had an RV toppled onto it's side.

The NWS thanks Brevard County Emergency Management, Orlando media and local citizens for their assistance in completing this tornado damage assessment.

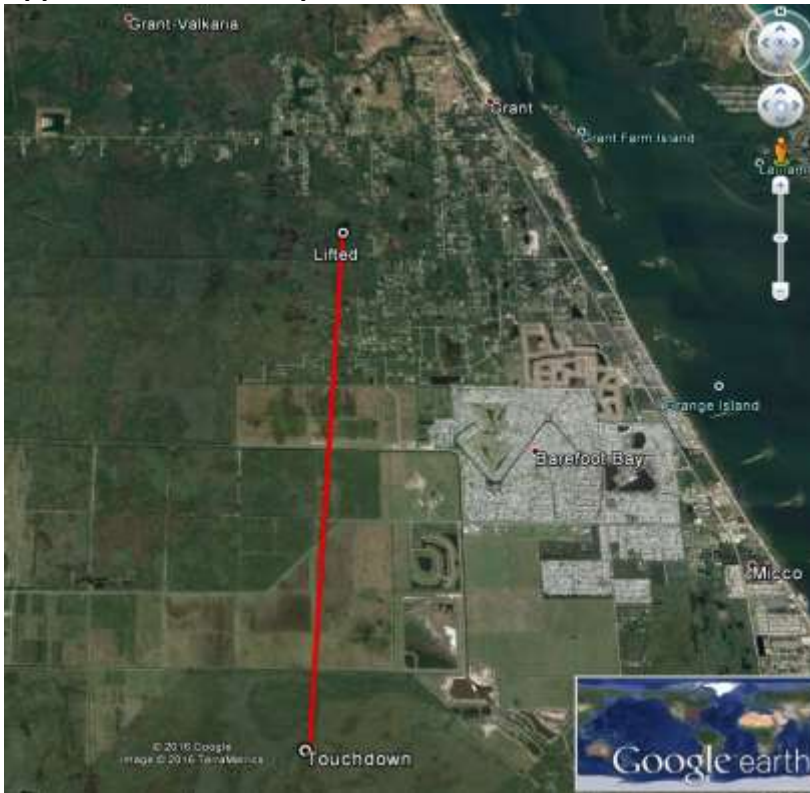
EF Scale: The Enhanced Fujita Scale Classifies Tornadoes into the following categories.

EF0...Weak.....65 to 85 MPH
EF1...Weak.....86 to 110 MPH
EF2...Strong....111 to 135 MPH
EF3...Strong....136 to 165 MPH
EF4...Violent...166 To 200 MPH
EF5...Violent...>200 MPH

Note:

The information in this statement is preliminary and subject to change pending final review of the event and publication in NWS Storm Data.

Approximate tornado path:



Zoom-in of damage area:



Damage Photos from Event:
 (Courtesy Brevard Co Emergency Management)

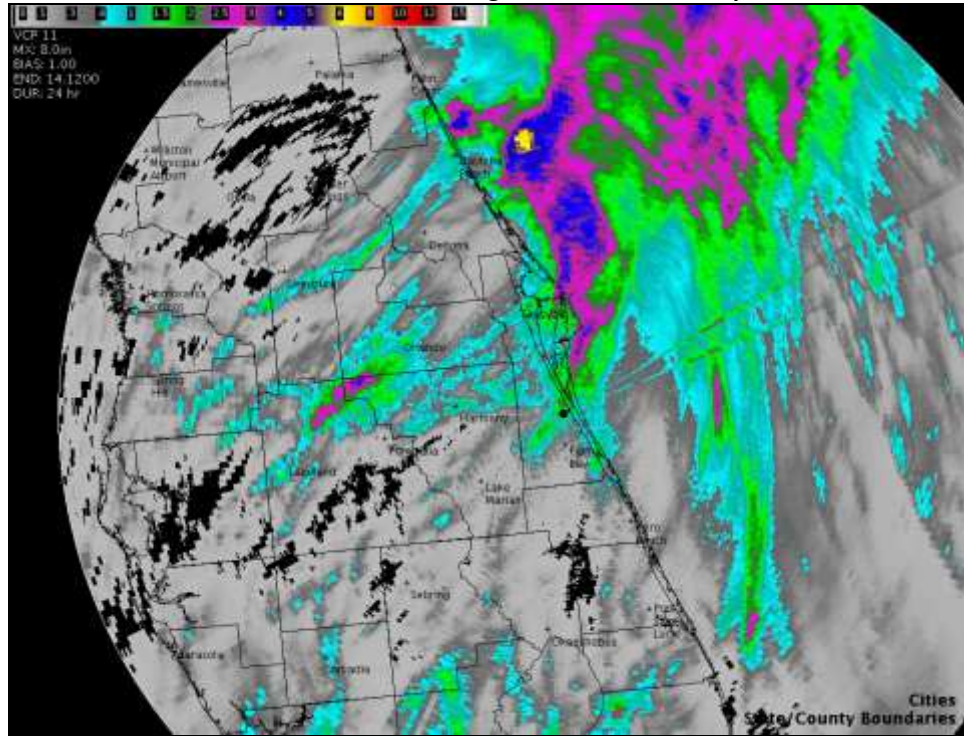


Some peak wind gusts occurring Tuesday, from around East Central Florida:

24 Hour Peak Winds (mph)			
6 WSW Astor	NE 54	1 SE Ponce Inlet	E 46
4 SE Ponce Inlet	E 44	3 SE Ponce Inlet	E 43
5 NNW Cocoa Beach	SE 43	2 NW Cocoa Beach	SE 42
1 ESE Patrick Air	S 40	2 NE Cocoa Beach	SE 40
27 ESE Playalinda	SE 40	10 NNE Cocoa Beach	S 40
5 NNE Cocoa Beach	SE 39	Daytona Beach Intl	W 39
3 SSW Ponce Inlet	SE 37	1 E Lagrange	S 36
Daytona Beach	E 36	2 ESE Tomoka State	SE 36
Nasa Shuttle Fclty	S 35	Valkaria	S 33
Daytona Beach Intl	N 33	1 NNW Valkaria	SE 33
1 SE Pineda	SE 33	Vero Beach Municipal	SE 33
1 S Melbourne Beach	S 32	Kissimmee Municipal	S 32
1 SSW Cocoa Beach	S 32	St Lucie County	S 32
3 NNW Saint Lucie	SE 30	3 E Cocoa	S 30
Orlando Executive	S 30	Orlando International	S 30

data valid as of Wed 9:38 am - NWS Melbourne

The KMLB WSR-88D 24-Hour Rainfall, ending 8 am EDT Wed 14 September



Some 24-Hr Rainfall Totals, ending Wednesday Morning around East Central Florida:

24 Hour Precip Totals (inches)			
Melbourne	4.21	1 WNW West Melbourne	3.43
Edgewater 1.4 N	3.41	1 ESE Patrick Air	3.31
Melbourne, Fl	3.20	3 NNW Mount Plymouth	3.02
10 NNE Cocoa Beach	2.95	2 N Edgewater	2.94
Nasa Shuttle Fclty	2.67	Serg	2.64
1 SSW Pineda	2.52	1 W Palm Bay	2.40
Conway	2.25	Pineda	2.20
1 W Palm Shores	2.18	Ponce Inlet 0.5 S	2.05
2 WNW Eau Gallie	2.01	1 WSW Rockledge	1.97
1 WSW Valdez	1.89	Lake Mary Jane	1.86
2 WNW Cocoa	1.79	1 WNW Port Saint John	1.75
3 ENE Malabar	1.73	1 W Kennedy Space	1.71
3 NW Cocoa Beach	1.70	4 NE Cocoa	1.63
3 SSW West Melbourne	1.59	S61w	1.56
2 NNW Poinciana Place	1.49	1 SE Rockledge	1.47
Daytona Beach Intl	1.46	1 SE Pineda	1.45
2 WSW Palm Shores	1.45	Daytona Beach Intl	1.43
Vineland	1.41	1 SSE Deland	1.39
2 SSW Pineda	1.33	1 NW Fern Park	1.29
Union Park 1.1 E	1.28	1 NW Pineda	1.27
2 WSW Palm Shores	1.27	1 W Palm Shores	1.27
3 ESE West Melbourne	1.26	Azalea Park	1.25
Lake Mary Jane	1.25	Daytona Beach	1.24
Orlando International	1.24	3 NW Cocoa Beach	1.23

data valid as of Wed 9:44 am - NWS Melbourne